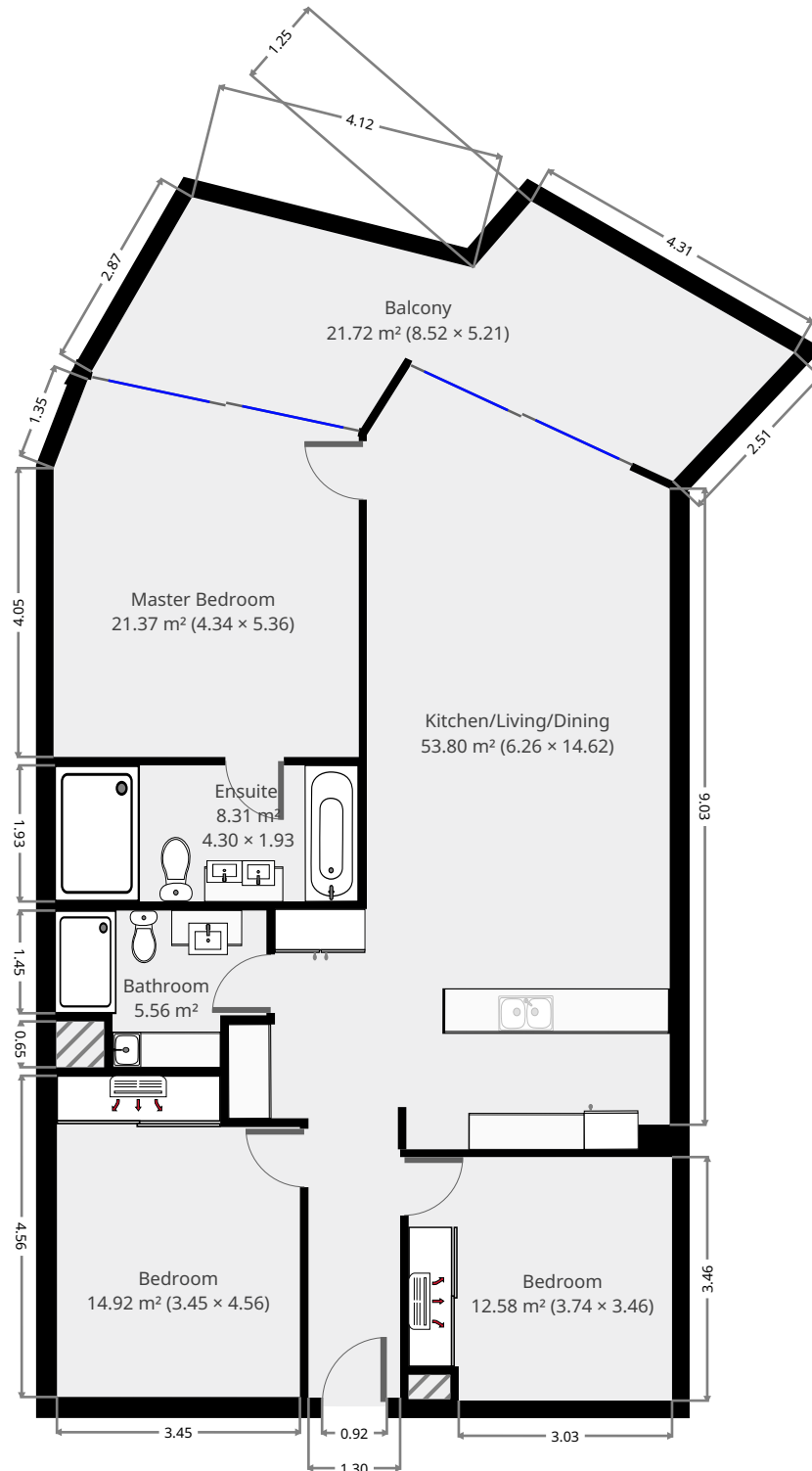


Unit 503/32 Anzac Parade, Yeppoon

Ground Floor



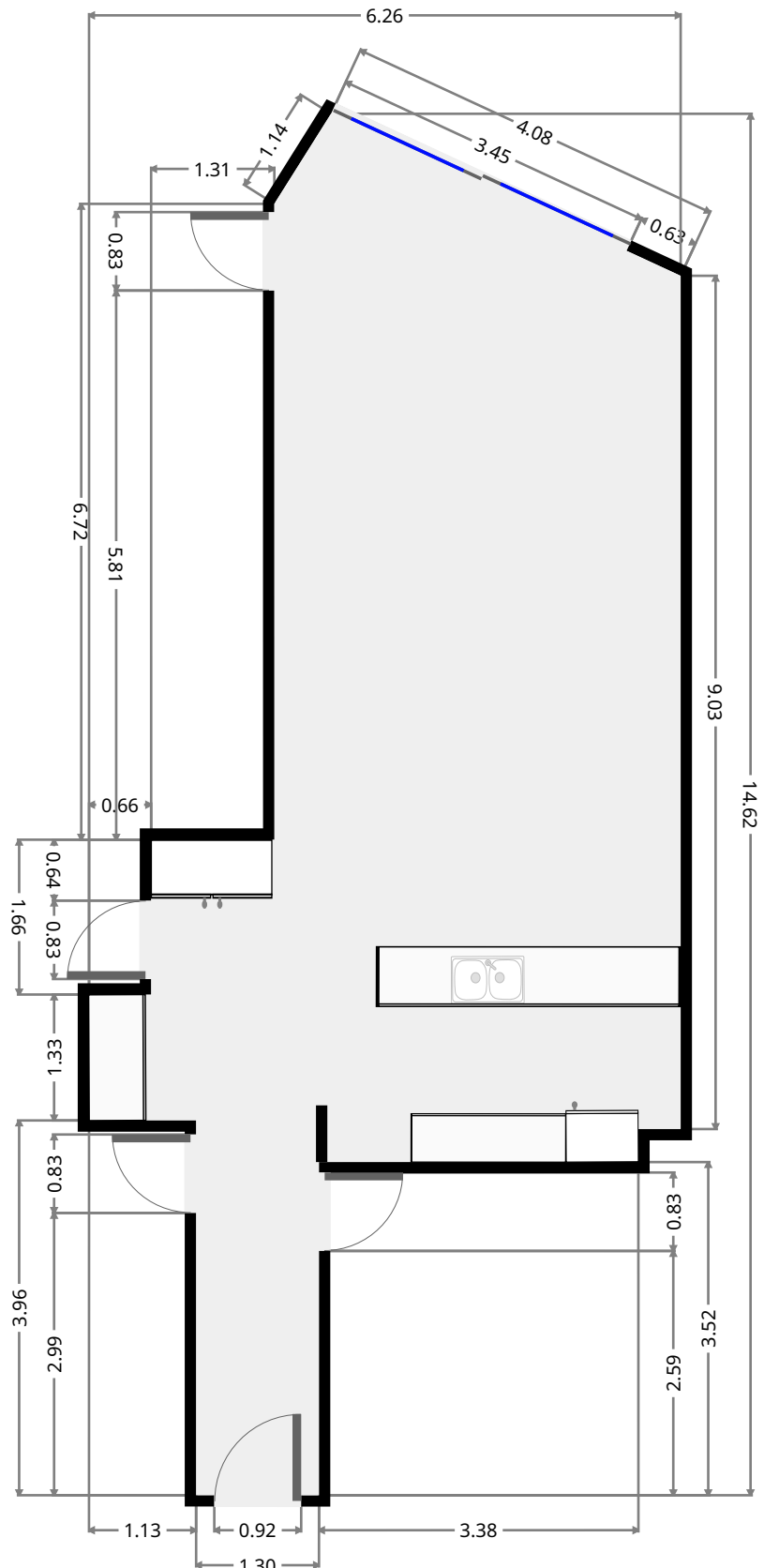
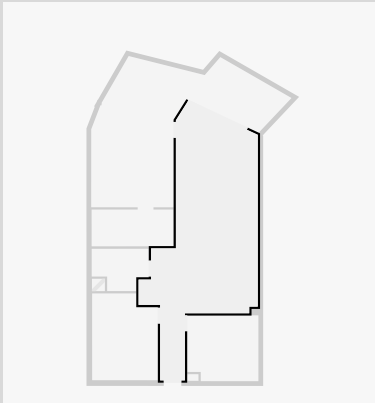
THIS FLOORPLAN IS PROVIDED WITHOUT WARRANTY OF ANY KIND. SENSOPIA DISCLAIMS ANY WARRANTY INCLUDING, WITHOUT LIMITATION, SATISFACTORY QUALITY OR ACCURACY OF DIMENSIONS.



Unit 503/32 Anzac Parade, Yeppoon

Kitchen/Living/Dining

Width: 6.26 m
 Length: 14.62 m
 Area: 53.80 m²
 Perimeter: 40.00 m

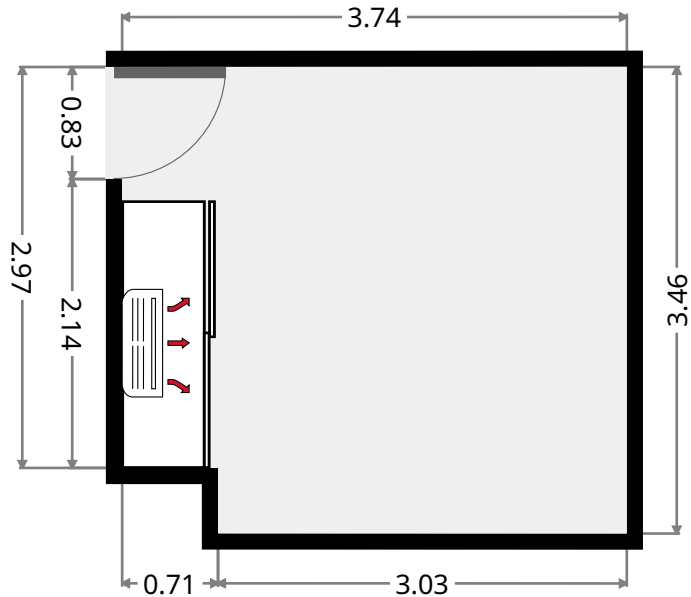
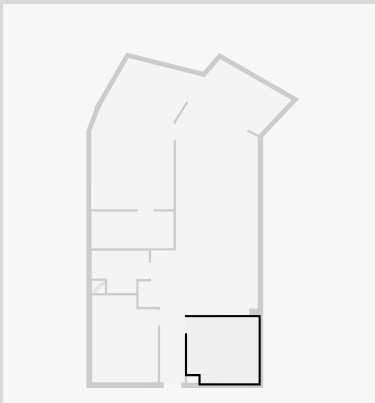


THIS FLOORPLAN IS PROVIDED WITHOUT WARRANTY OF ANY KIND. SENSOPIA DISCLAIMS ANY WARRANTY INCLUDING, WITHOUT LIMITATION, SATISFACTORY QUALITY OR ACCURACY OF DIMENSIONS.

Unit 503/32 Anzac Parade, Yeppoon

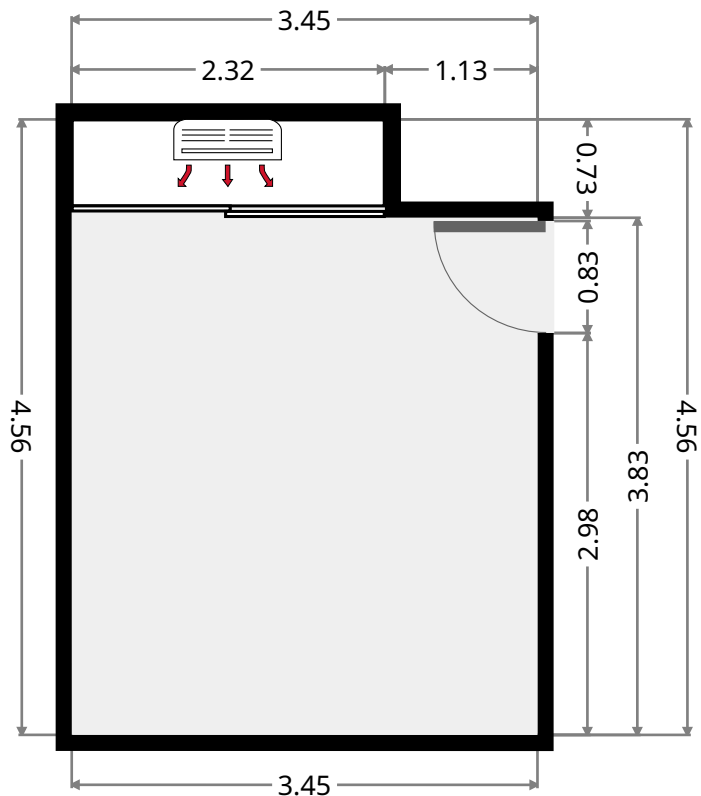
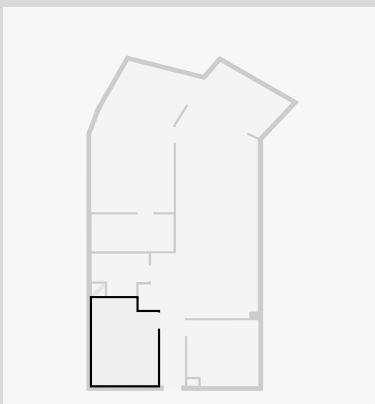
Bedroom

Width: 3.46 m
 Length: 3.74 m
 Area: 12.58 m²
 Perimeter: 14.39 m



Bedroom

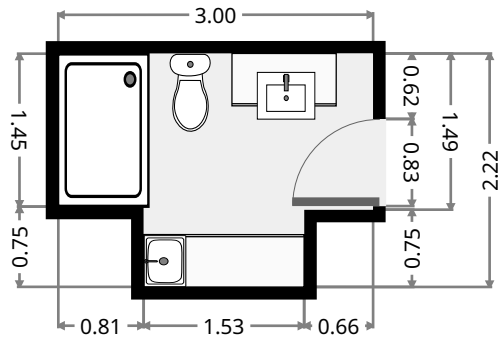
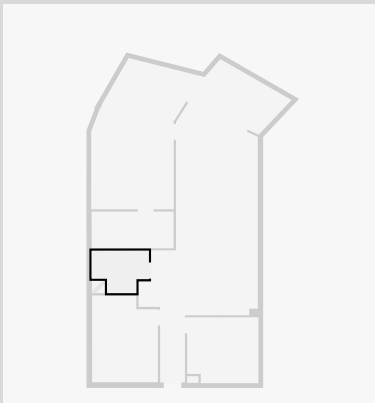
Width: 3.45 m
 Length: 4.56 m
 Area: 14.92 m²
 Perimeter: 16.03 m



Unit 503/32 Anzac Parade, Yeppoon

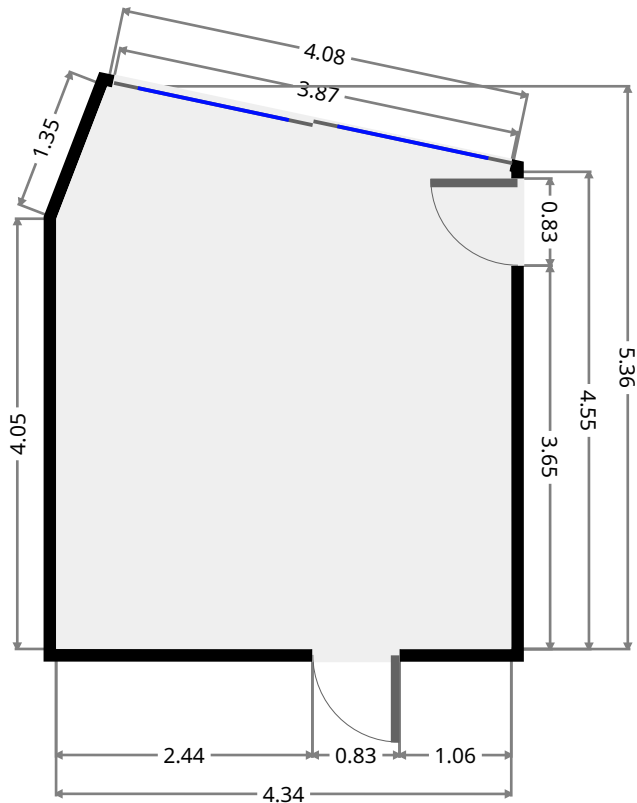
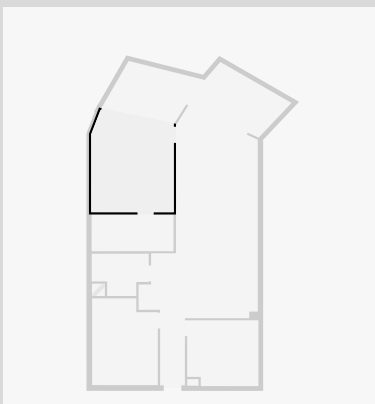
Bathroom

Width: 2.22 m
 Length: 3.00 m
 Area: 5.56 m²
 Perimeter: 10.44 m



Master Bedroom

Width: 4.34 m
 Length: 5.36 m
 Area: 21.37 m²
 Perimeter: 18.27 m

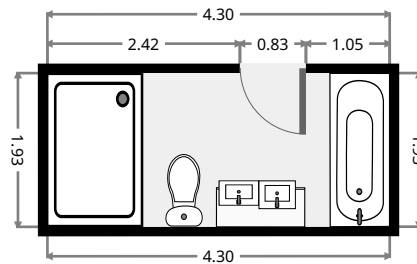
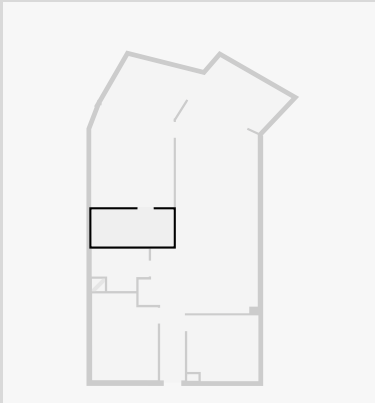


THIS FLOORPLAN IS PROVIDED WITHOUT WARRANTY OF ANY KIND. SENSOPIA DISCLAIMS ANY WARRANTY INCLUDING, WITHOUT LIMITATION, SATISFACTORY QUALITY OR ACCURACY OF DIMENSIONS.

Unit 503/32 Anzac Parade, Yeppoon

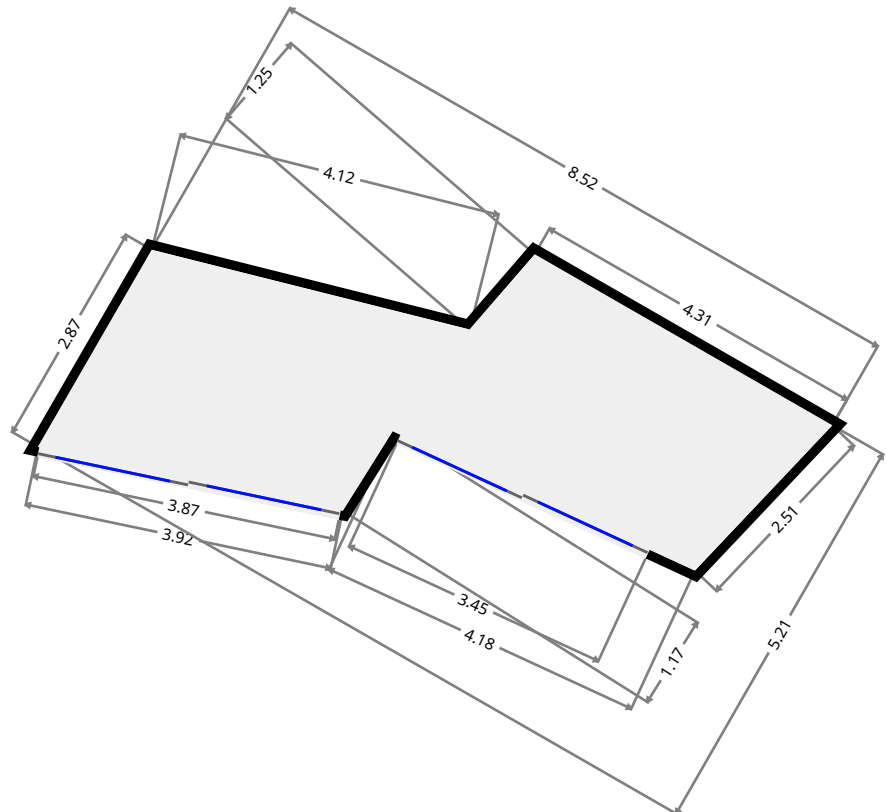
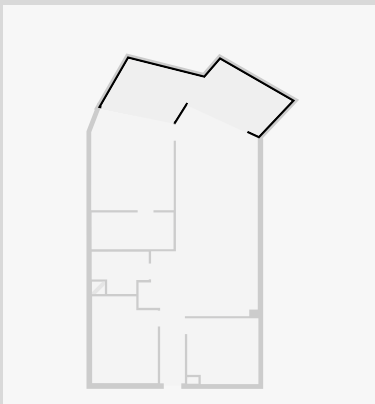
Ensuite

Width: 1.93 m
 Length: 4.30 m
 Area: 8.31 m²
 Perimeter: 12.47 m



Balcony

Width: 5.21 m
 Length: 8.52 m
 Area: 21.72 m²
 Perimeter: 24.34 m



THIS FLOORPLAN IS PROVIDED WITHOUT WARRANTY OF ANY KIND. SENSOPIA DISCLAIMS ANY WARRANTY INCLUDING, WITHOUT LIMITATION, SATISFACTORY QUALITY OR ACCURACY OF DIMENSIONS.