

Unit 1/99 Whitman Street

SUBMITTED BY

Ray White Rockhampton Casey
stockers@cqoz.com

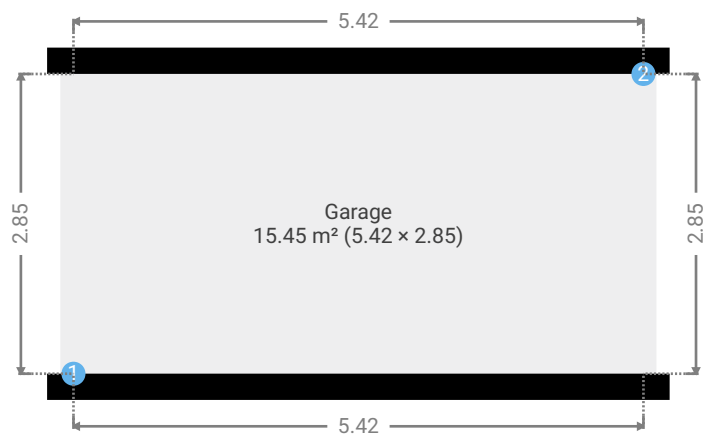
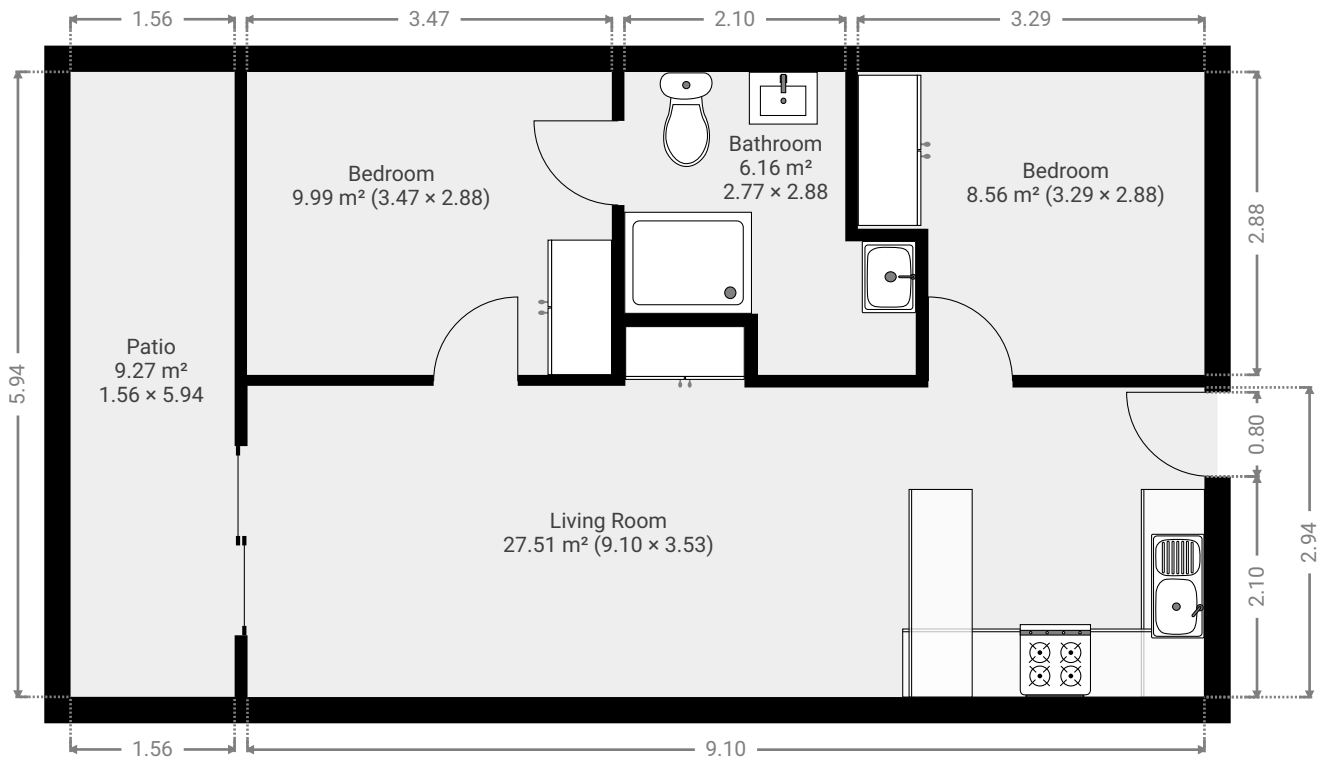
CREATED ON

2022-12-14

Floors

1

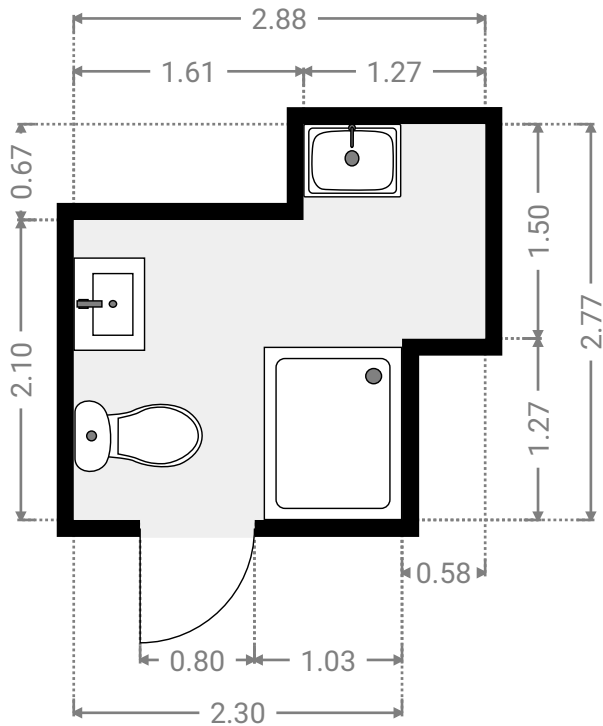
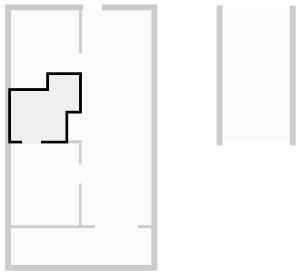
▼ Ground Floor



FLOORS: 1

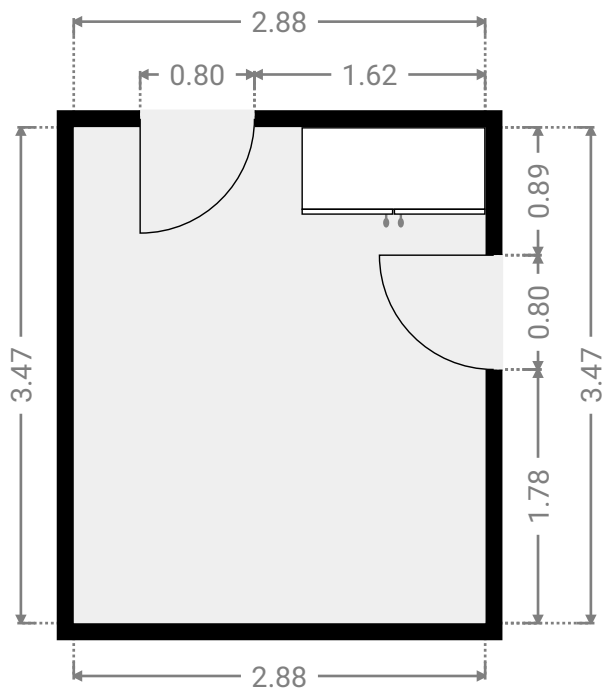
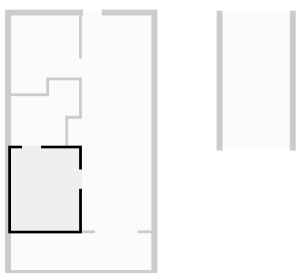
▼ **Bathroom**
Ground Floor

WIDTH: 2.88 m • LENGTH: 2.77 m
AREA: 6.16 m² • PERIMETER: 11.30 m



▼ **Bedroom**
Ground Floor

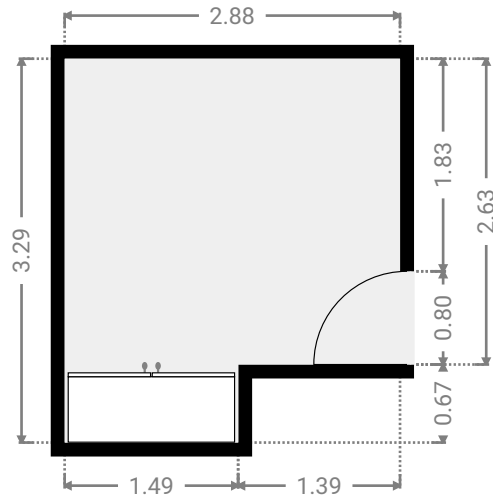
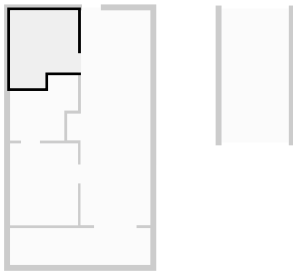
WIDTH: 2.88 m • LENGTH: 3.47 m
AREA: 9.99 m² • PERIMETER: 12.70 m



FLOORS: 1

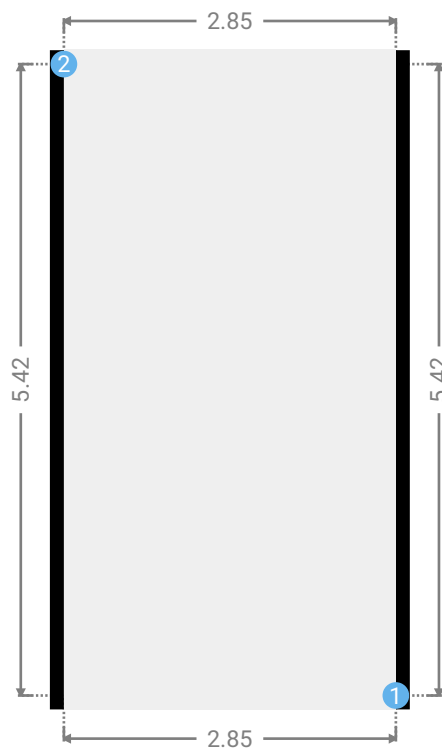
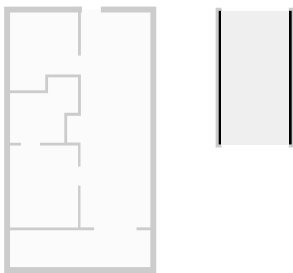
▼ **Bedroom**
Ground Floor

WIDTH: 2.88 m • LENGTH: 3.29 m
AREA: 8.56 m² • PERIMETER: 12.35 m



▼ **Garage**
Ground Floor

WIDTH: 2.85 m • LENGTH: 5.42 m
AREA: 15.45 m² • PERIMETER: 16.54 m



▼ Garage/Ground Floor

1 OPENING

Height
0.00 m



2 OPENING

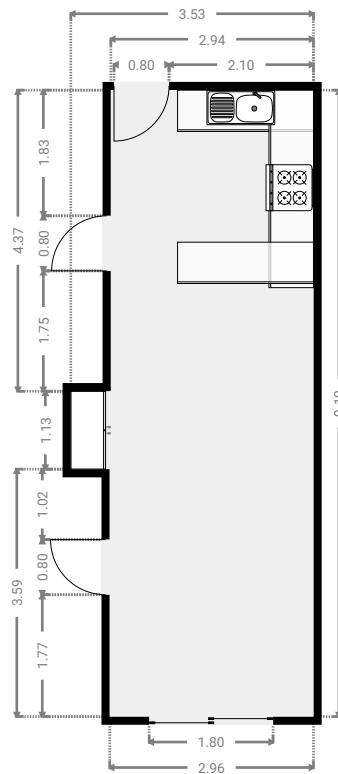
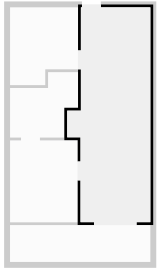
Height
0.00 m



FLOORS: 1

▼ **Living Room**
Ground Floor

WIDTH: 3.53 m • LENGTH: 9.10 m
AREA: 27.51 m² • PERIMETER: 25.25 m



▼ **Patio**
Ground Floor

WIDTH: 5.94 m • LENGTH: 1.56 m
AREA: 9.27 m² • PERIMETER: 15.01 m

