

Unit 1/152 Housden Street

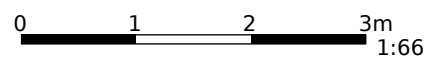
Created on
2020-09-15

Floors
1

▼ Ground Floor



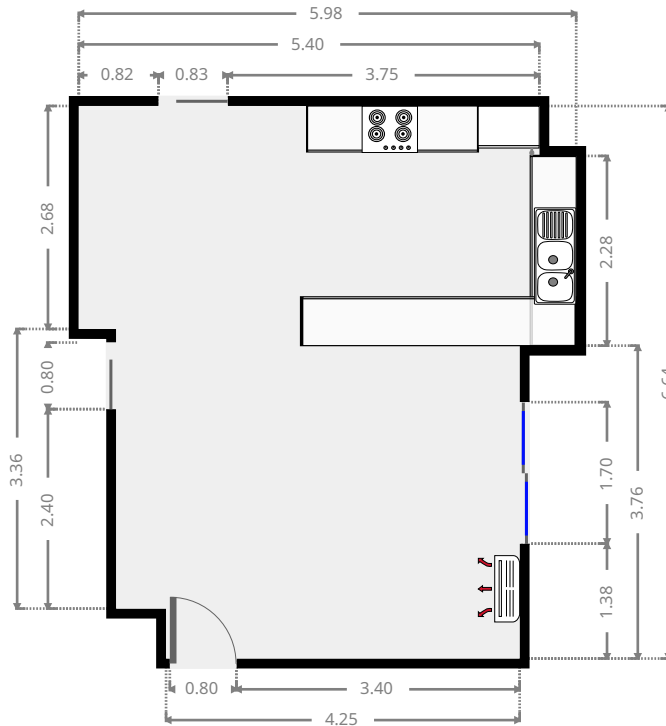
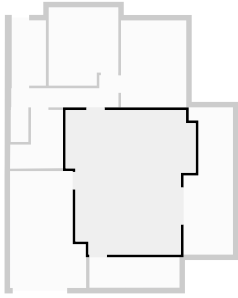
THIS FLOORPLAN IS PROVIDED WITHOUT WARRANTY OF ANY KIND. SENSOPIA DISCLAIMS ANY WARRANTY INCLUDING, WITHOUT LIMITATION, SATISFACTORY QUALITY OR ACCURACY OF DIMENSIONS.



FLOORS: 1

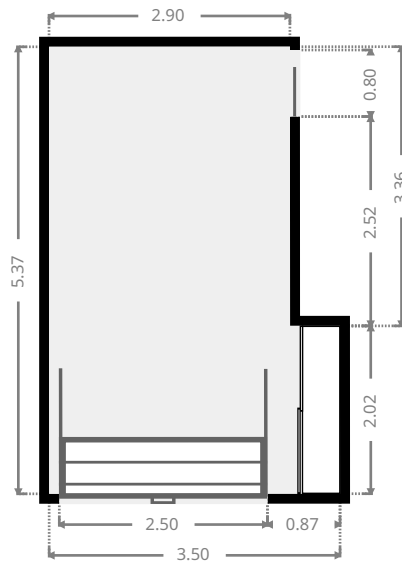
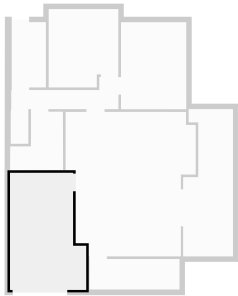
▼ Living Room Ground Floor

WIDTH: 5.98 m • LENGTH: 6.64 m
AREA: 34.74 m² • PERIMETER: 25.24 m

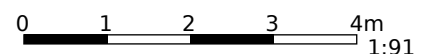


▼ Garage Ground Floor

WIDTH: 3.50 m • LENGTH: 5.37 m
AREA: 16.77 m² • PERIMETER: 17.74 m



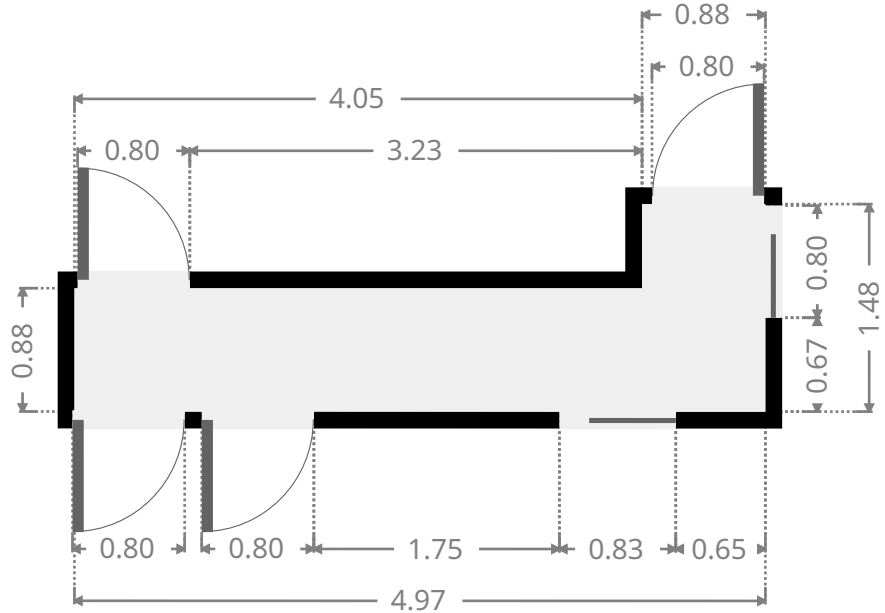
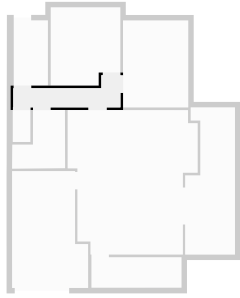
THIS FLOORPLAN IS PROVIDED WITHOUT WARRANTY OF ANY KIND. SENSOPIA DISCLAIMS ANY WARRANTY INCLUDING, WITHOUT LIMITATION, SATISFACTORY QUALITY OR ACCURACY OF DIMENSIONS.



FLOORS: 1

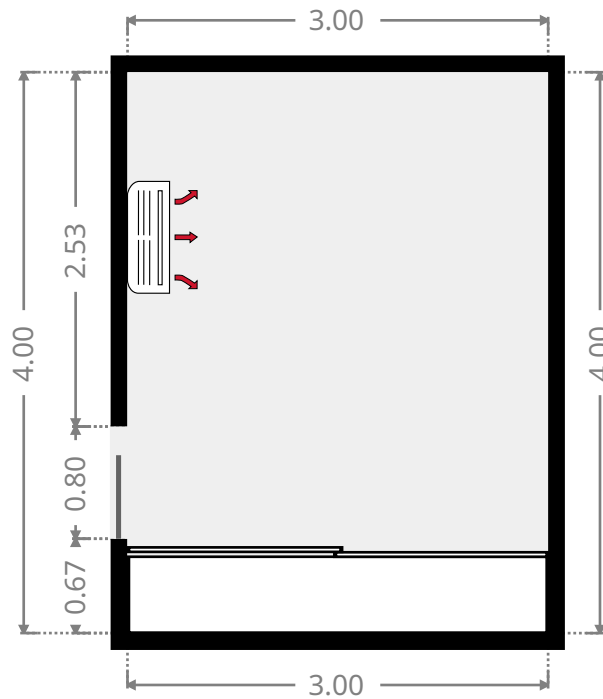
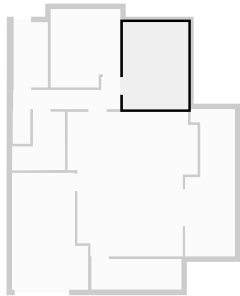
▼ **Hall**
Ground Floor

WIDTH: 4.93 m • LENGTH: 1.48 m
AREA: 4.86 m² • PERIMETER: 12.82 m



▼ **Bedroom**
Ground Floor

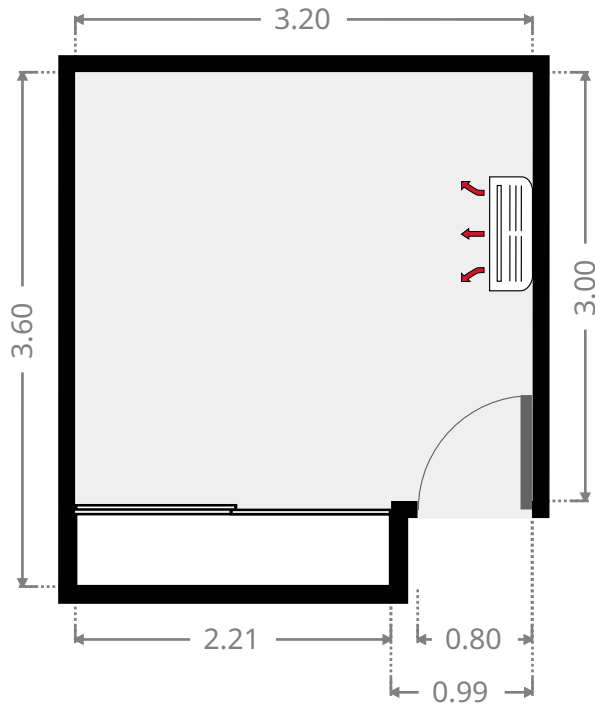
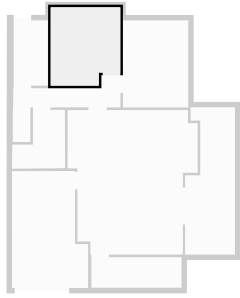
WIDTH: 3.00 m • LENGTH: 4.00 m
AREA: 12.00 m² • PERIMETER: 14.00 m



FLOORS: 1

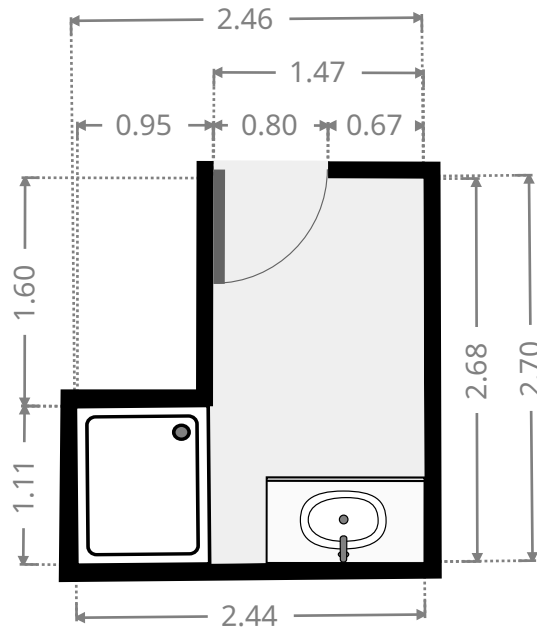
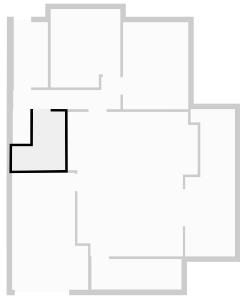
▼ **Bedroom**
Ground Floor

WIDTH: 3.20 m • LENGTH: 3.60 m
AREA: 10.93 m² • PERIMETER: 13.60 m



▼ **Bathroom**
Ground Floor

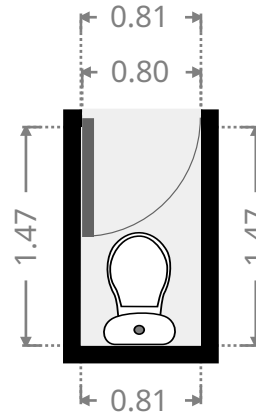
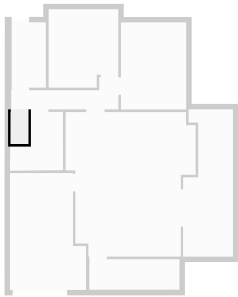
WIDTH: 2.46 m • LENGTH: 2.70 m
AREA: 5.02 m² • PERIMETER: 10.24 m



FLOORS: 1

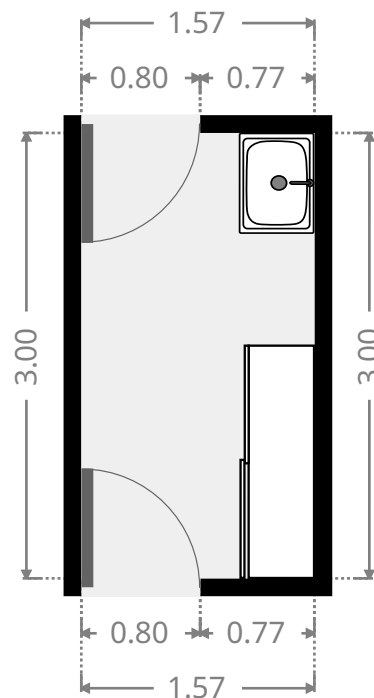
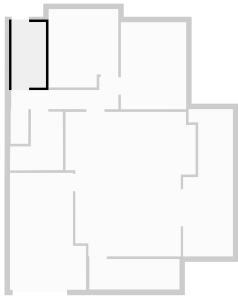
▼ Toilet Ground Floor

WIDTH: 0.81 m • LENGTH: 1.47 m
AREA: 1.19 m² • PERIMETER: 4.56 m

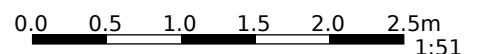


▼ Laundry Room Ground Floor

WIDTH: 1.57 m • LENGTH: 3.00 m
AREA: 4.71 m² • PERIMETER: 9.14 m



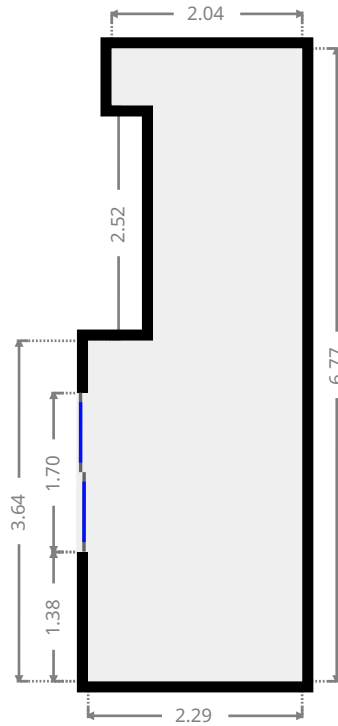
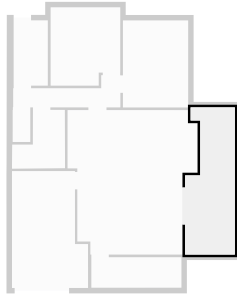
THIS FLOORPLAN IS PROVIDED WITHOUT WARRANTY OF ANY KIND. SENSOPIA DISCLAIMS ANY WARRANTY INCLUDING, WITHOUT LIMITATION, SATISFACTORY QUALITY OR ACCURACY OF DIMENSIONS.



FLOORS: 1

▼ **Other**
Ground Floor

WIDTH: 2.29 m • **LENGTH:** 6.77 m
AREA: 13.59 m² • **PERIMETER:** 19.00 m



▼ **Other**
Ground Floor

WIDTH: 4.14 m • **LENGTH:** 1.40 m
AREA: 5.80 m² • **PERIMETER:** 11.08 m

