

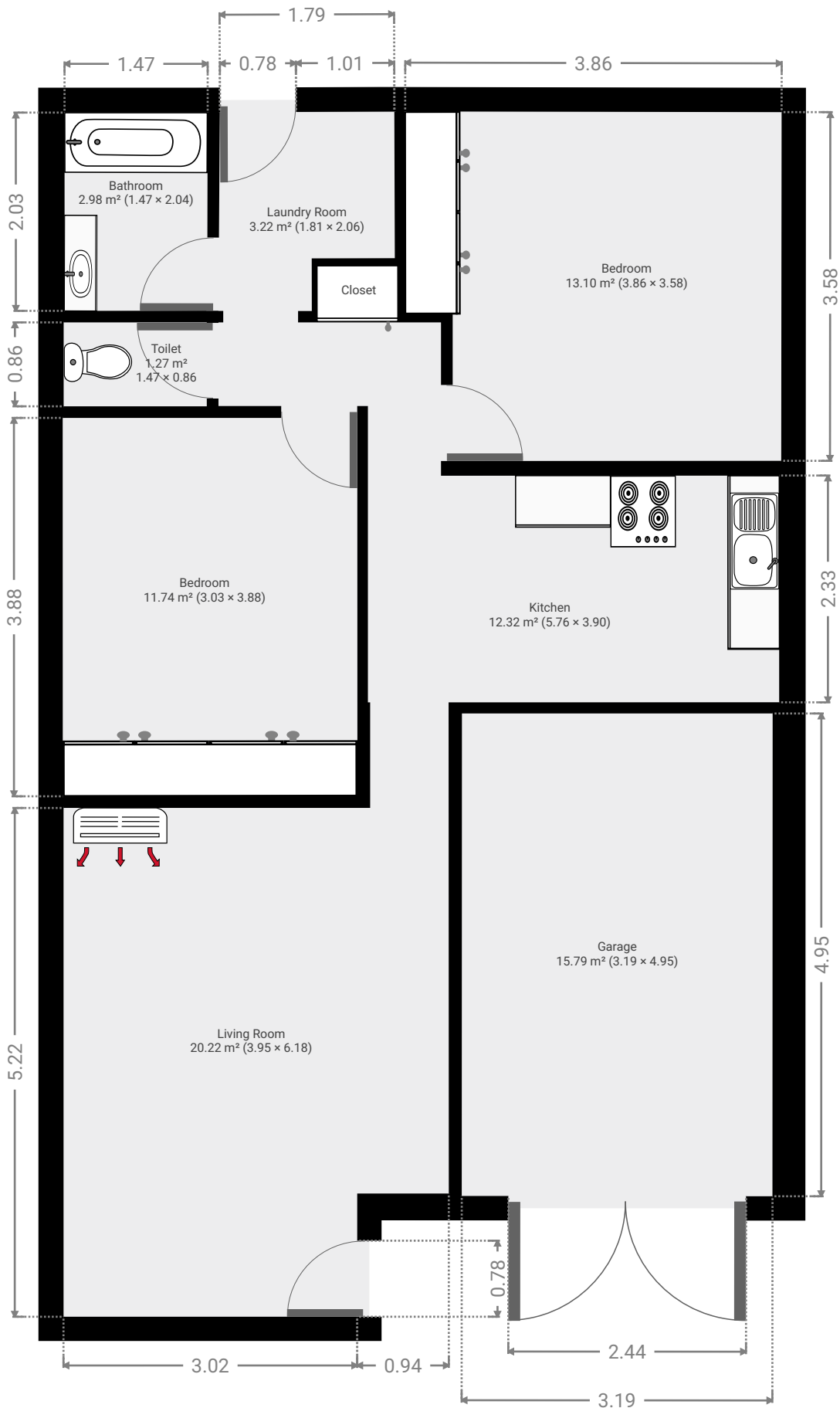
Unit 1/14 Potts Street

SUBMITTED BY
Ray White Rockhampton Casey
stockers@cqoz.com

CREATED ON
2017-01-31

Floors
1

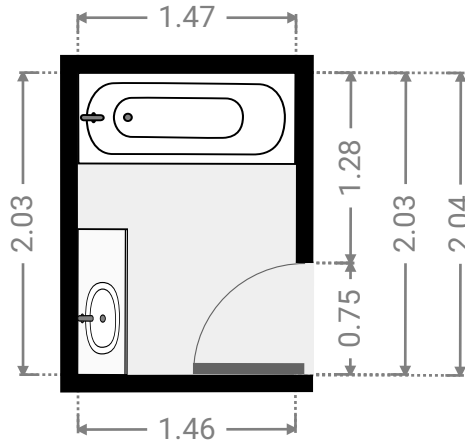
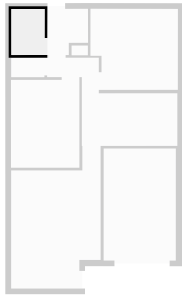
▼ Ground Floor



FLOORS: 1

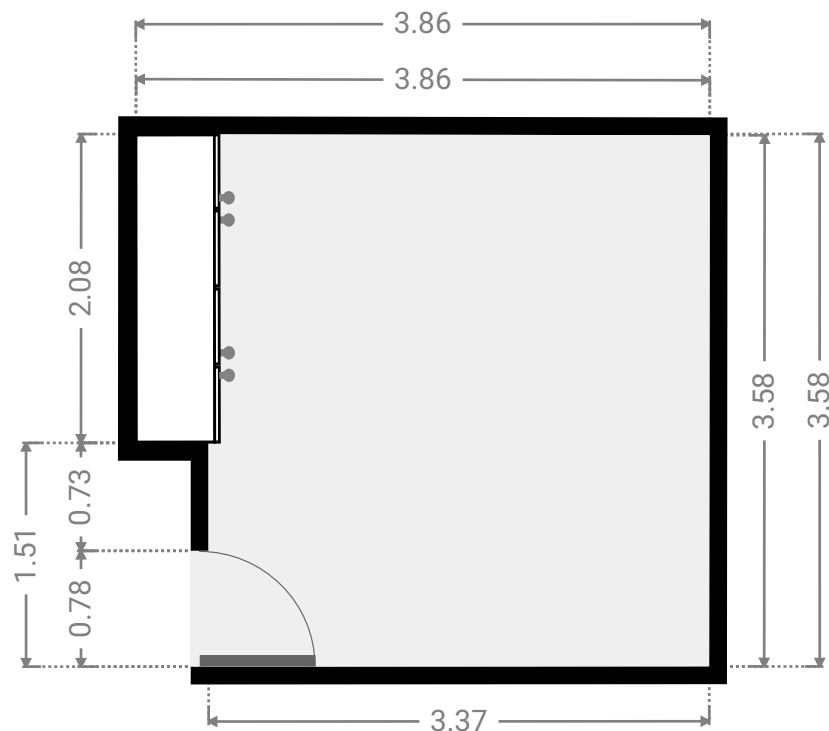
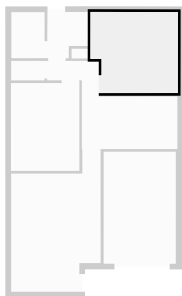
▼ **Bathroom**
Ground Floor

WIDTH: 1.47 m • LENGTH: 2.04 m
AREA: 2.98 m² • PERIMETER: 7.00 m



▼ **Bedroom**
Ground Floor

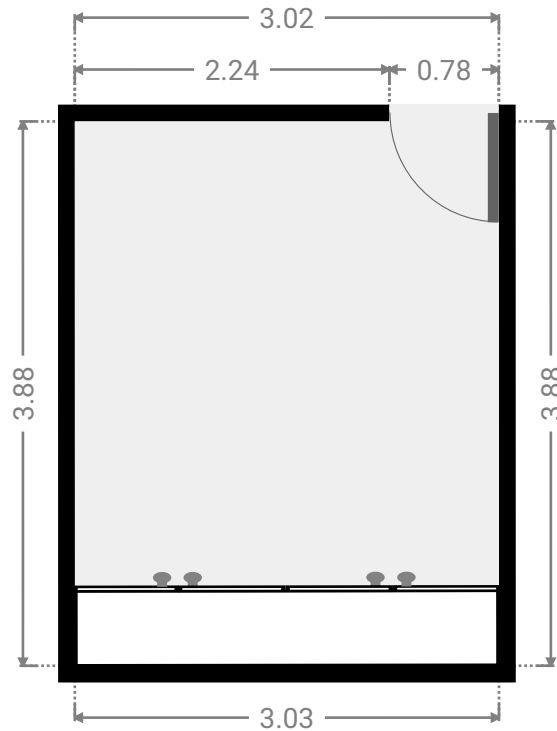
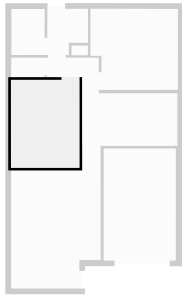
WIDTH: 3.86 m • LENGTH: 3.58 m
AREA: 13.10 m² • PERIMETER: 14.89 m



FLOORS: 1

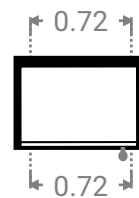
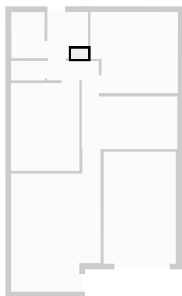
▼ **Bedroom**
Ground Floor

WIDTH: 3.03 m • LENGTH: 3.88 m
AREA: 11.74 m² • PERIMETER: 13.81 m



▼ **Closet**
Ground Floor

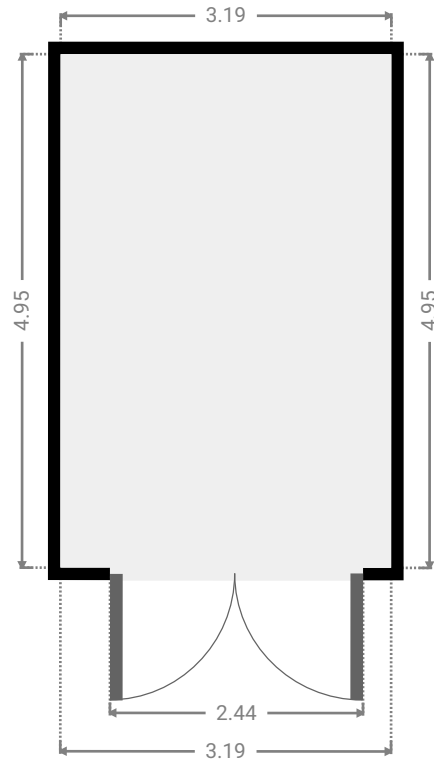
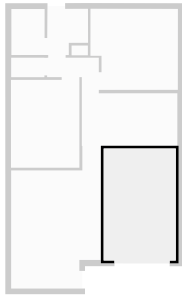
WIDTH: 0.72 m • LENGTH: 0.43 m
AREA: 0.31 m² • PERIMETER: 2.30 m



FLOORS: 1

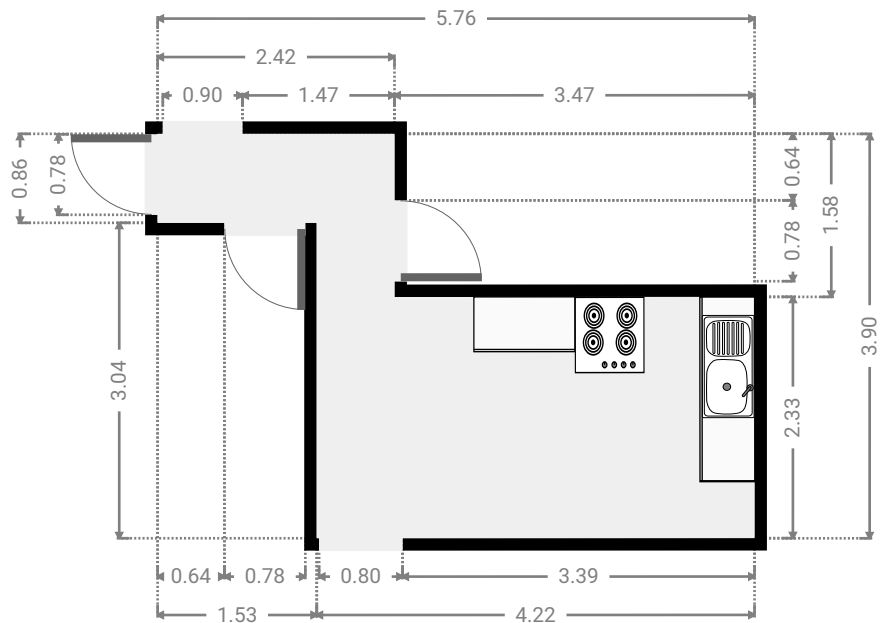
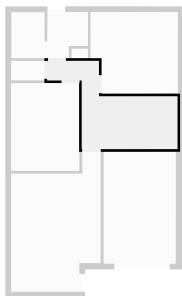
▼ **Garage**
Ground Floor

WIDTH: 3.19 m • LENGTH: 4.95 m
AREA: 15.79 m² • PERIMETER: 16.28 m



▼ **Kitchen**
Ground Floor

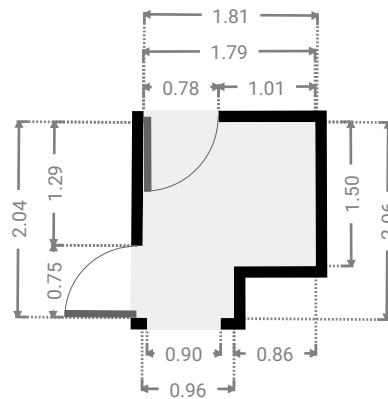
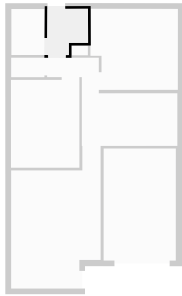
WIDTH: 5.76 m • LENGTH: 3.90 m
AREA: 12.32 m² • PERIMETER: 19.31 m



FLOORS: 1

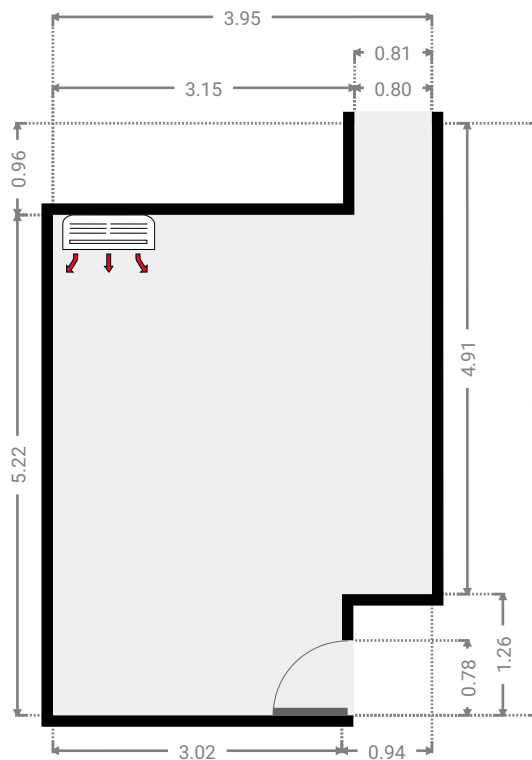
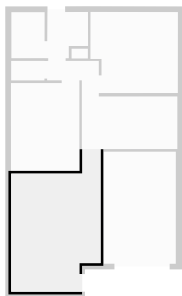
▼ Laundry Room
Ground Floor

WIDTH: 1.81 m • LENGTH: 2.06 m
AREA: 3.22 m² • PERIMETER: 7.69 m



▼ Living Room
Ground Floor

WIDTH: 3.95 m • LENGTH: 6.18 m
AREA: 20.22 m² • PERIMETER: 20.26 m



▼ Toilet
Ground Floor

WIDTH: 1.47 m • LENGTH: 0.86 m
AREA: 1.27 m² • PERIMETER: 4.66 m

