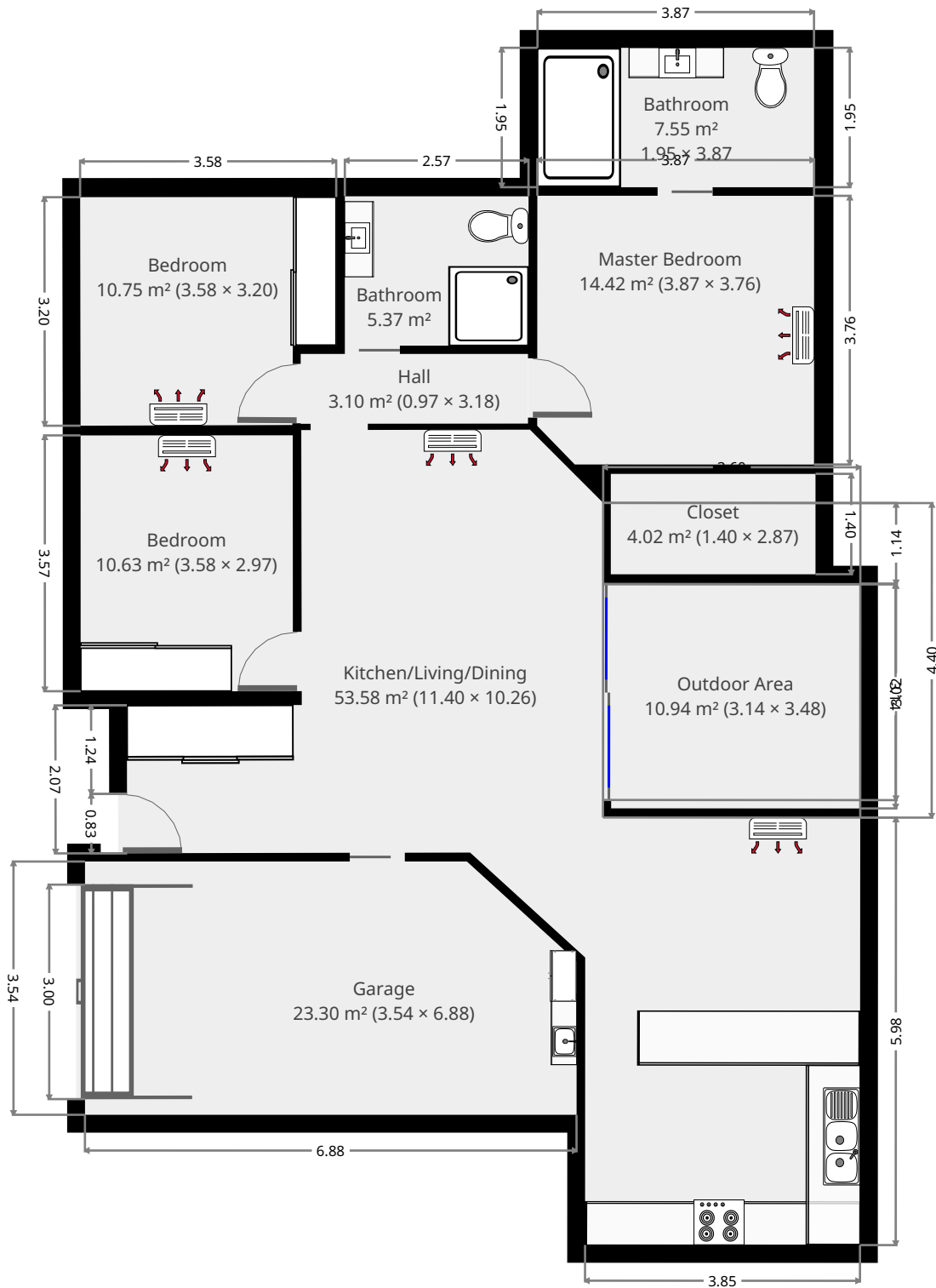


UNIT 1/200 Upper Dawson Road

Ground Floor



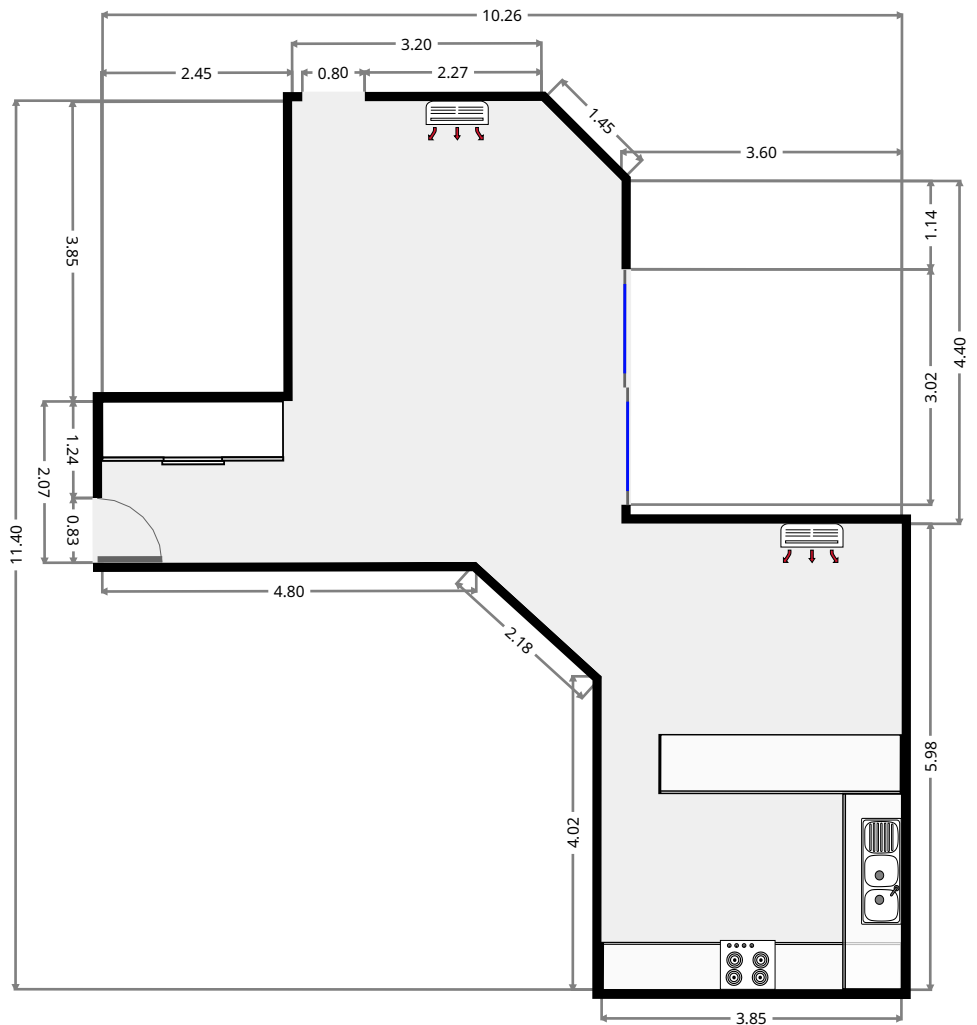
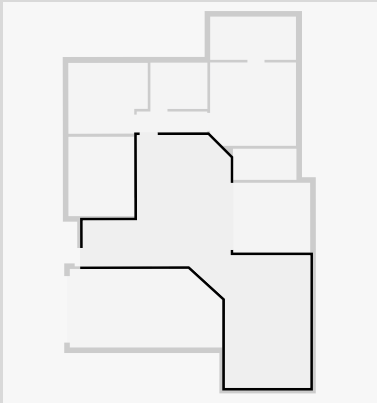
THIS FLOORPLAN IS PROVIDED WITHOUT WARRANTY OF ANY KIND. SENSOPIA DISCLAIMS ANY WARRANTY INCLUDING, WITHOUT LIMITATION, SATISFACTORY QUALITY OR ACCURACY OF DIMENSIONS.



UNIT 1/200 Upper Dawson Road

Kitchen/Living/Dining

Width: 10.26 m
Length: 11.40 m
Area: 53.58 m²
Perimeter: 41.84 m



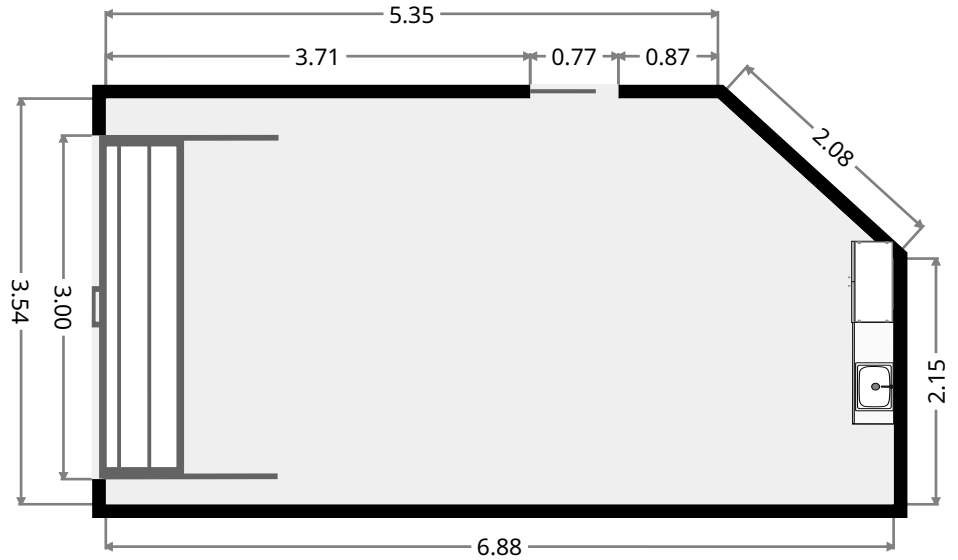
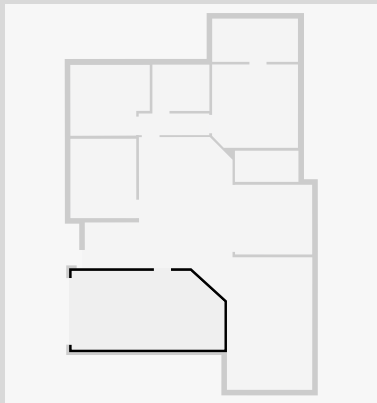
THIS FLOORPLAN IS PROVIDED WITHOUT WARRANTY OF ANY KIND. SENSOPIA DISCLAIMS ANY WARRANTY INCLUDING, WITHOUT LIMITATION, SATISFACTORY QUALITY OR ACCURACY OF DIMENSIONS.



UNIT 1/200 Upper Dawson Road

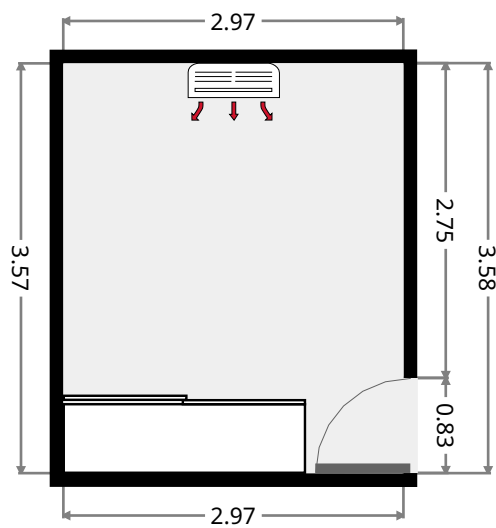
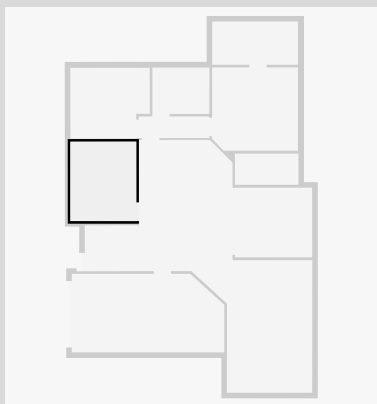
Garage

Width: 3.54 m
 Length: 6.88 m
 Area: 23.30 m²
 Perimeter: 19.99 m



Bedroom

Width: 2.97 m
 Length: 3.58 m
 Area: 10.63 m²
 Perimeter: 13.10 m



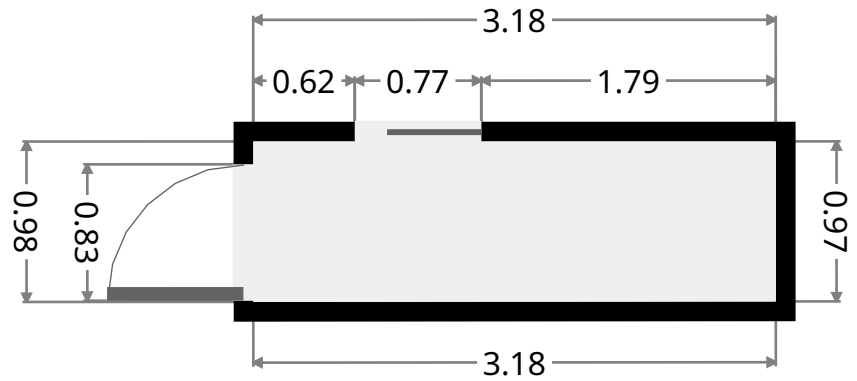
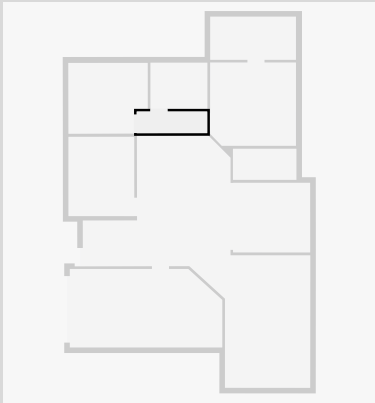
THIS FLOORPLAN IS PROVIDED WITHOUT WARRANTY OF ANY KIND. SENSOPIA DISCLAIMS ANY WARRANTY INCLUDING, WITHOUT LIMITATION, SATISFACTORY QUALITY OR ACCURACY OF DIMENSIONS.



UNIT 1/200 Upper Dawson Road

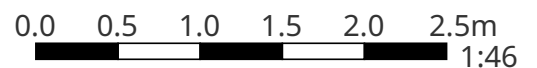
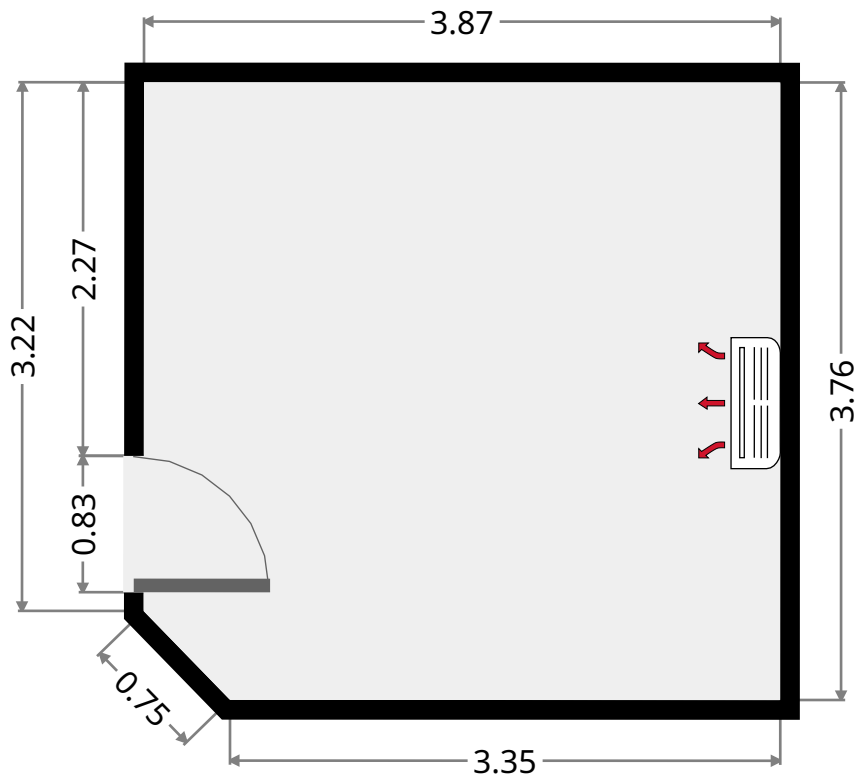
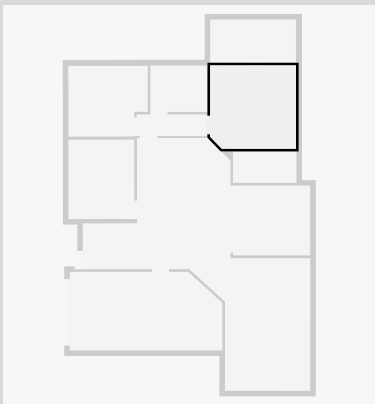
Hall

Width: 0.97 m
 Length: 3.18 m
 Area: 3.10 m²
 Perimeter: 8.31 m



Master Bedroom

Width: 3.76 m
 Length: 3.87 m
 Area: 14.42 m²
 Perimeter: 14.95 m

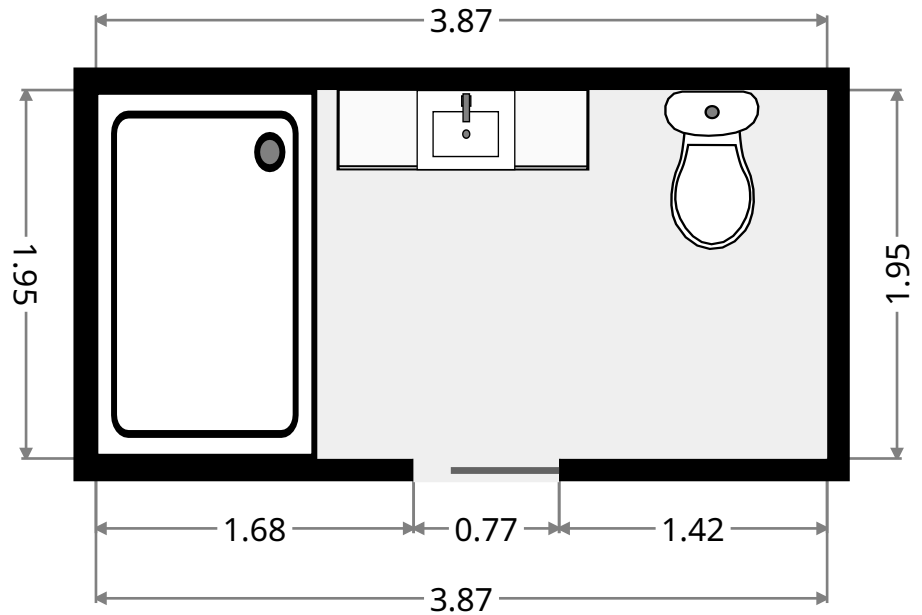
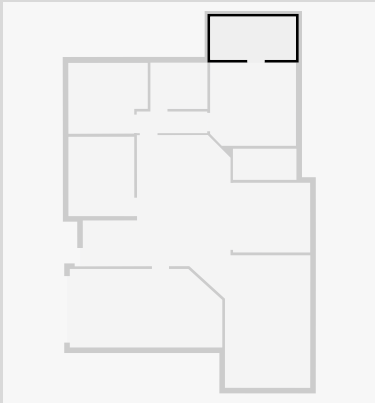


THIS FLOORPLAN IS PROVIDED WITHOUT WARRANTY OF ANY KIND. SENSOPIA DISCLAIMS ANY WARRANTY INCLUDING, WITHOUT LIMITATION, SATISFACTORY QUALITY OR ACCURACY OF DIMENSIONS.

UNIT 1/200 Upper Dawson Road

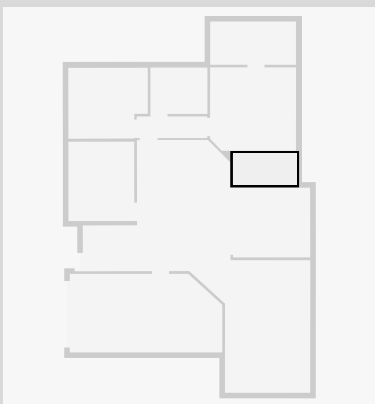
Bathroom

Width: 1.95 m
Length: 3.87 m
Area: 7.55 m²
Perimeter: 11.64 m



Closet

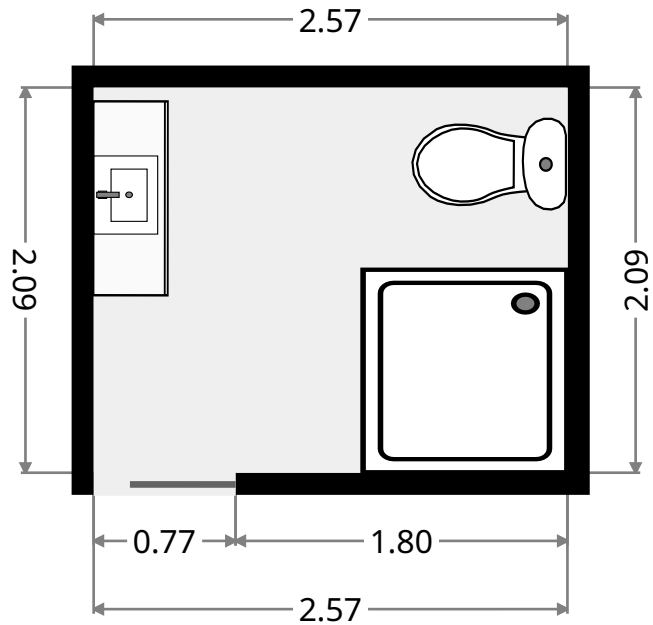
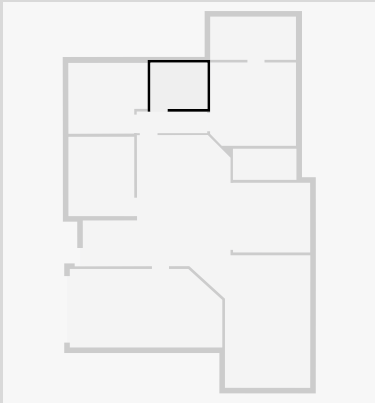
Width: 1.40 m
Length: 2.87 m
Area: 4.02 m²
Perimeter: 8.54 m



UNIT 1/200 Upper Dawson Road

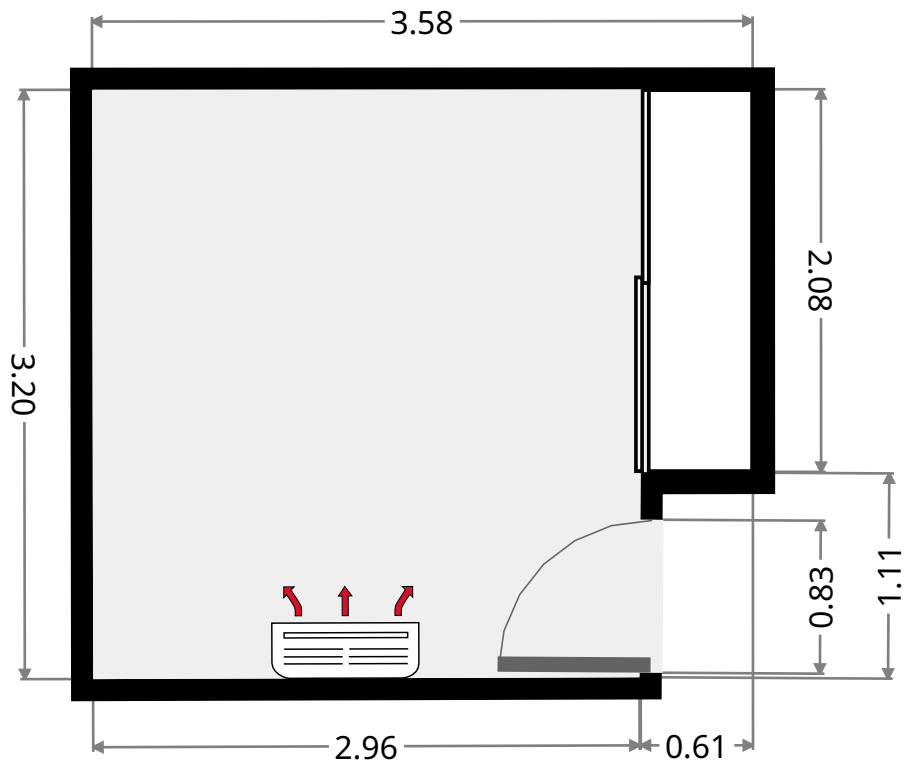
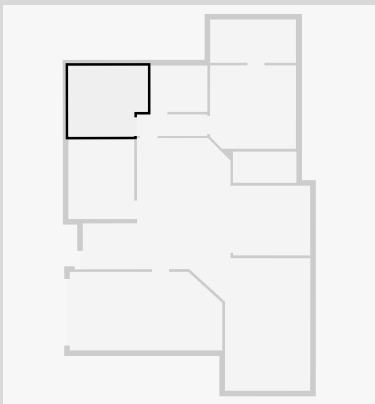
Bathroom

Width: 2.09 m
Length: 2.57 m
Area: 5.37 m²
Perimeter: 9.32 m

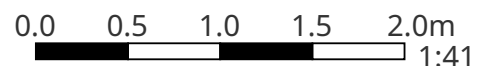


Bedroom

Width: 3.20 m
Length: 3.58 m
Area: 10.75 m²
Perimeter: 13.54 m



THIS FLOORPLAN IS PROVIDED WITHOUT WARRANTY OF ANY KIND. SENSOPIA DISCLAIMS ANY WARRANTY INCLUDING, WITHOUT LIMITATION, SATISFACTORY QUALITY OR ACCURACY OF DIMENSIONS.



UNIT 1/200 Upper Dawson Road

Outdoor Area

Width: 3.14 m
Length: 3.48 m
Area: 10.94 m²
Perimeter: 13.25 m

