

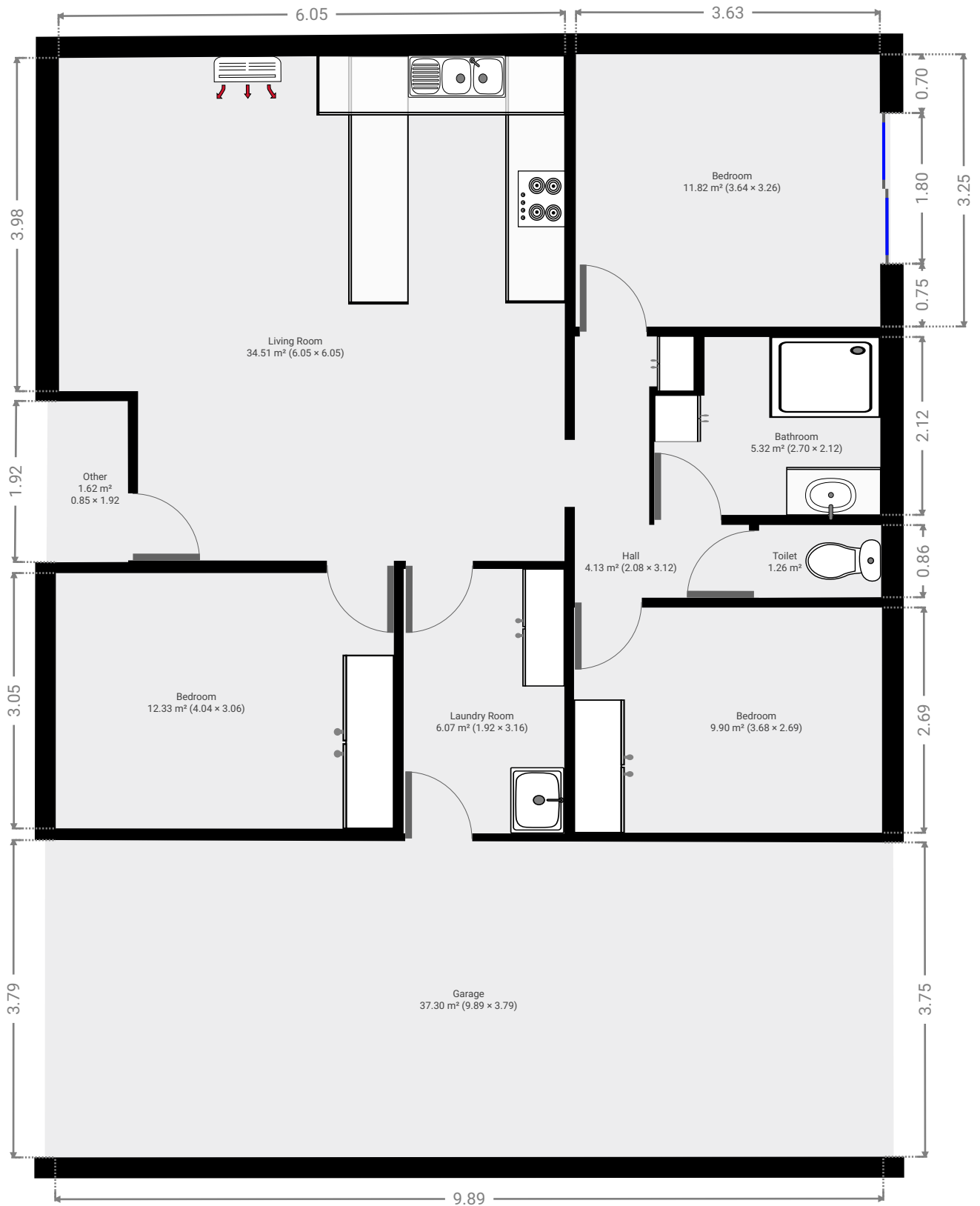
998 Yaamba Road

SUBMITTED BY
Janelle Casey

CREATED ON
2021-10-11

Floors 1

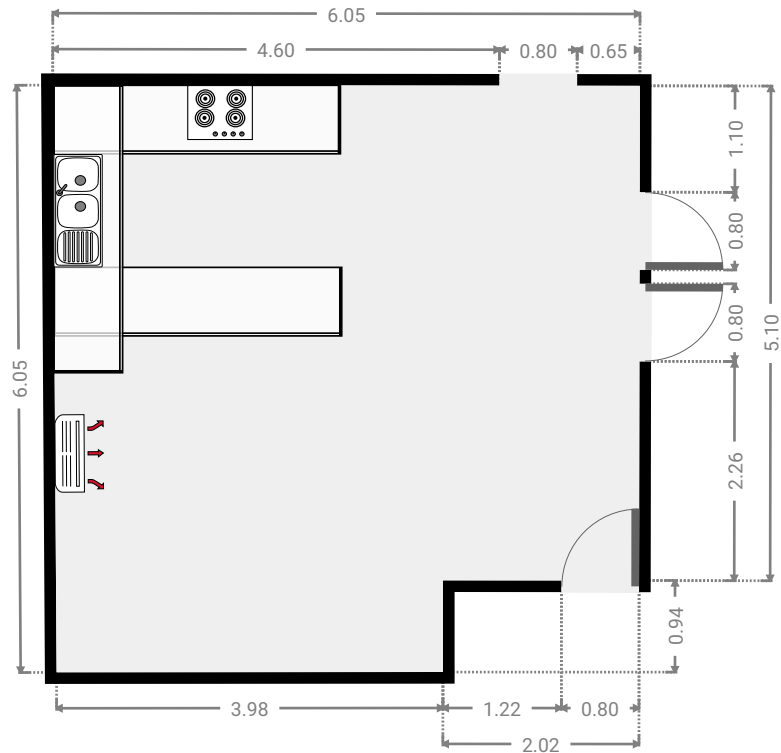
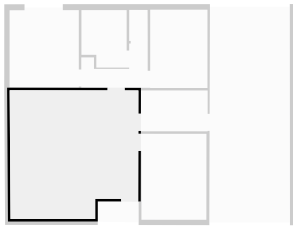
▼ Ground Floor



FLOORS: 1

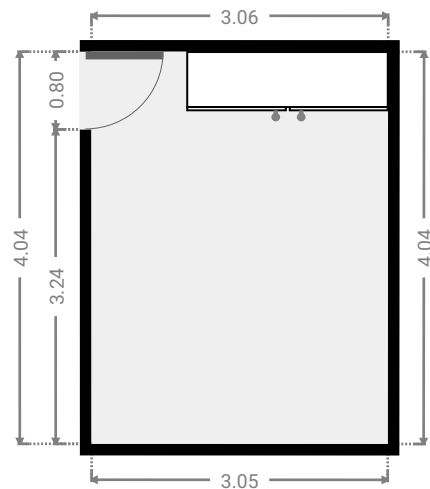
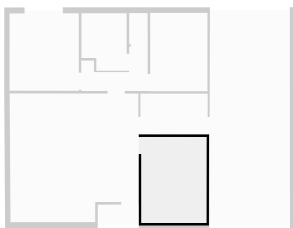
▼ **Living Room**
Ground Floor

WIDTH: 6.05 m • LENGTH: 6.05 m
AREA: 34.51 m² • PERIMETER: 24.14 m



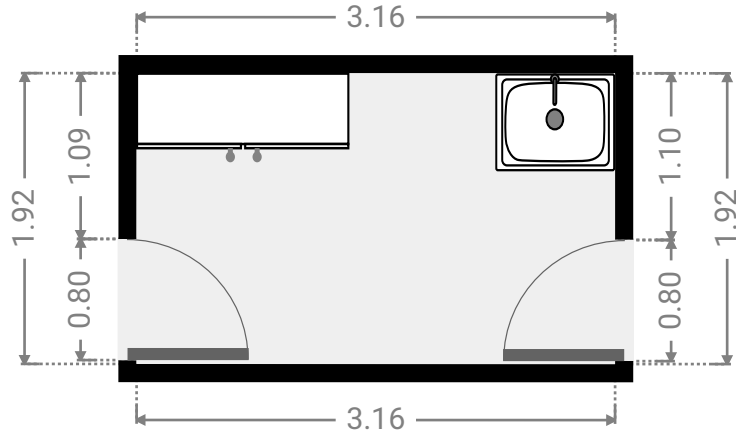
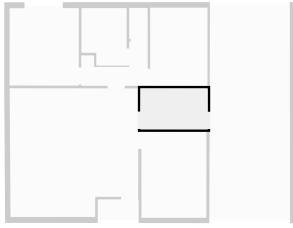
▼ **Bedroom**
Ground Floor

WIDTH: 3.06 m • LENGTH: 4.04 m
AREA: 12.33 m² • PERIMETER: 14.19 m



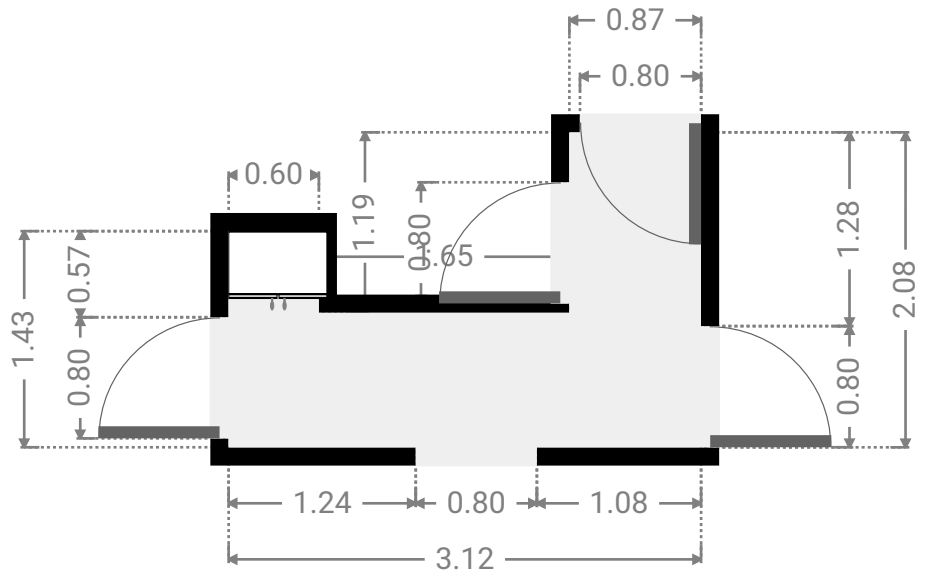
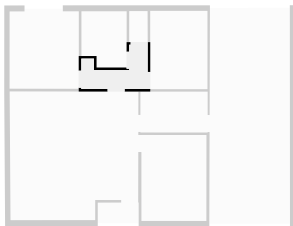
▼ **Laundry Room**
Ground Floor

WIDTH: 3.16 m • LENGTH: 1.92 m
AREA: 6.07 m² • PERIMETER: 10.16 m



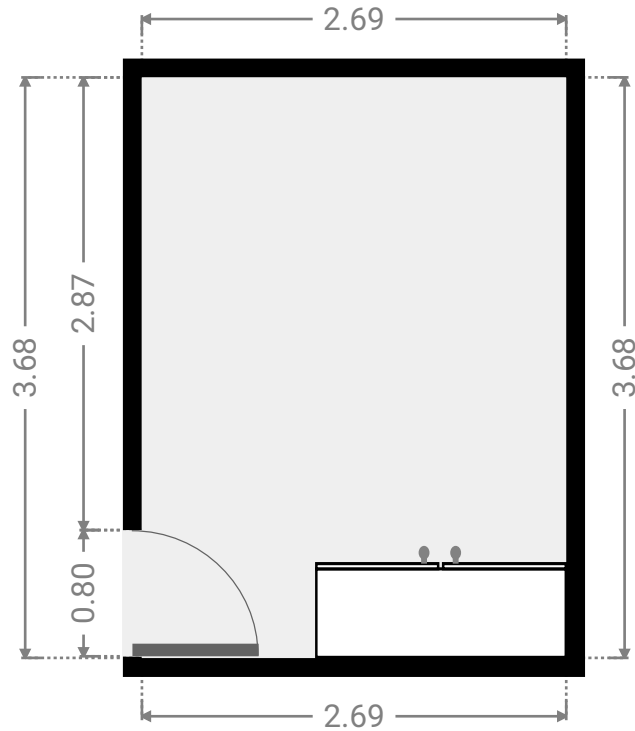
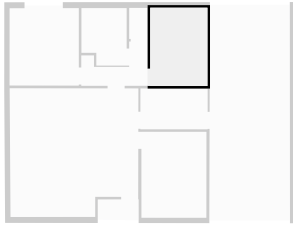
▼ **Hall**
Ground Floor

WIDTH: 3.12 m • LENGTH: 2.08 m
AREA: 4.13 m² • PERIMETER: 11.48 m



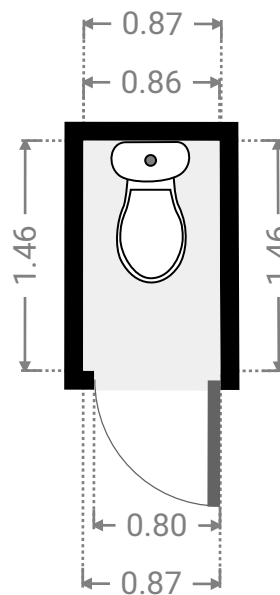
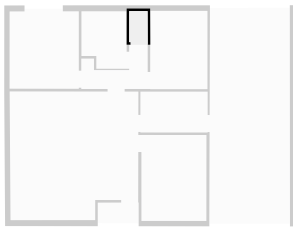
▼ **Bedroom**
Ground Floor

WIDTH: 2.69 m • LENGTH: 3.68 m
AREA: 9.90 m² • PERIMETER: 12.74 m



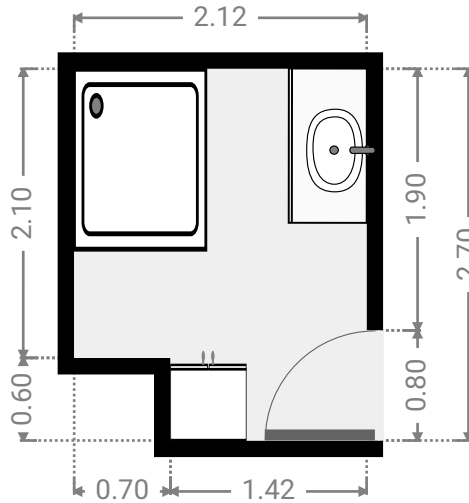
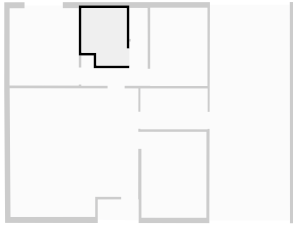
▼ **Toilet**
Ground Floor

WIDTH: 0.87 m • LENGTH: 1.46 m
AREA: 1.26 m² • PERIMETER: 4.65 m



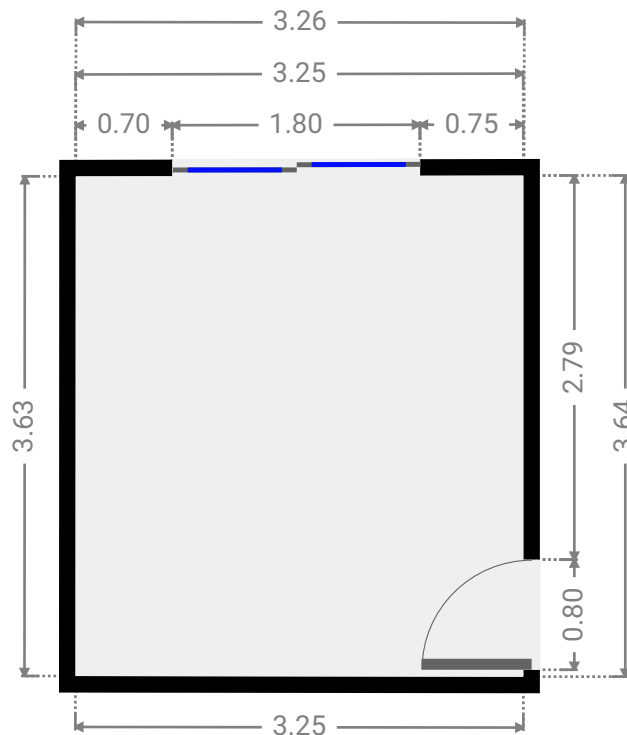
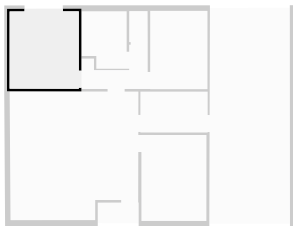
▼ **Bathroom**
Ground Floor

WIDTH: 2.12 m • LENGTH: 2.70 m
AREA: 5.32 m² • PERIMETER: 9.65 m



▼ **Bedroom**
Ground Floor

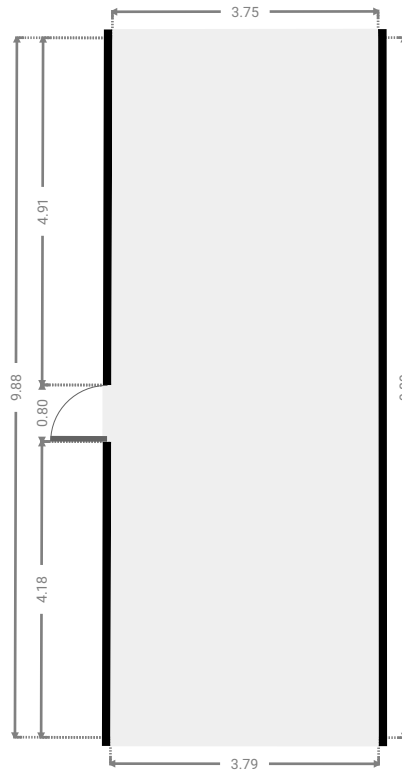
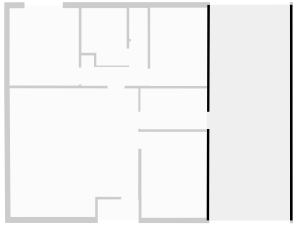
WIDTH: 3.26 m • LENGTH: 3.64 m
AREA: 11.82 m² • PERIMETER: 13.78 m



FLOORS: 1

▼ **Garage**
Ground Floor

WIDTH: 3.79 m • LENGTH: 9.89 m
AREA: 37.30 m² • PERIMETER: 27.32 m



▼ **Other**
Ground Floor

WIDTH: 1.92 m • LENGTH: 0.85 m
AREA: 1.62 m² • PERIMETER: 5.53 m

