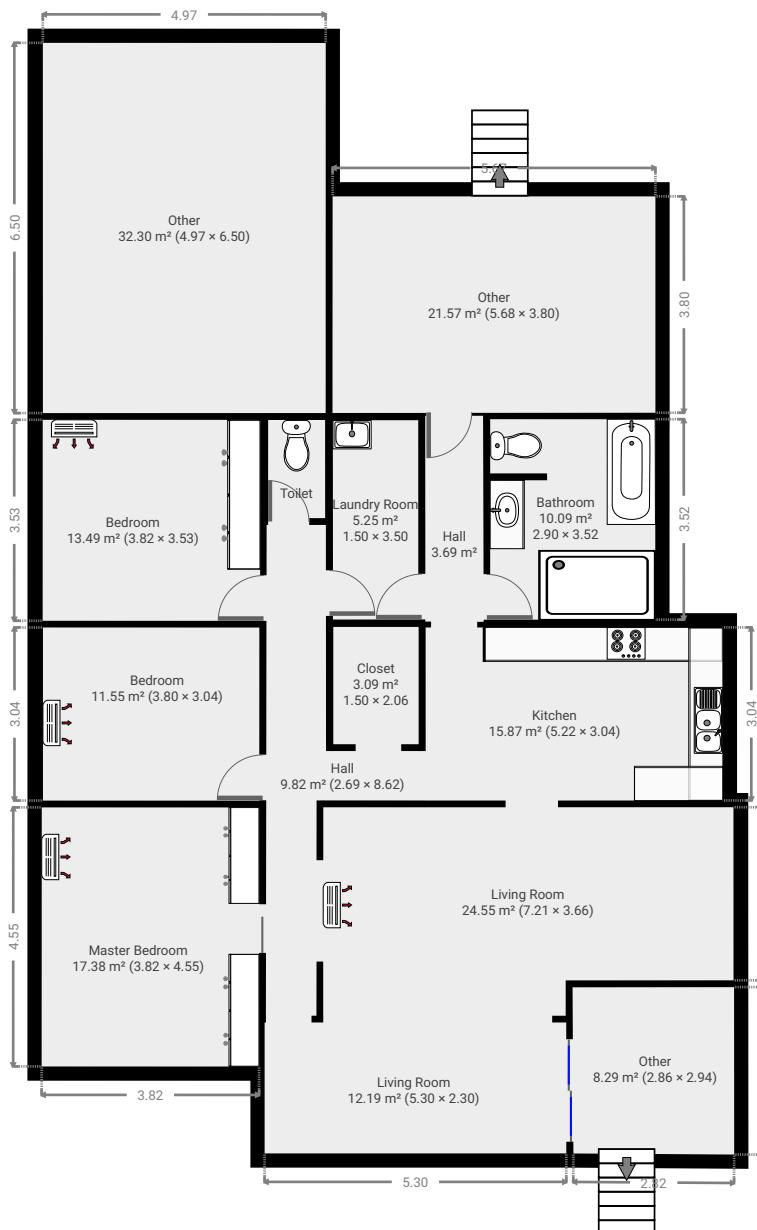
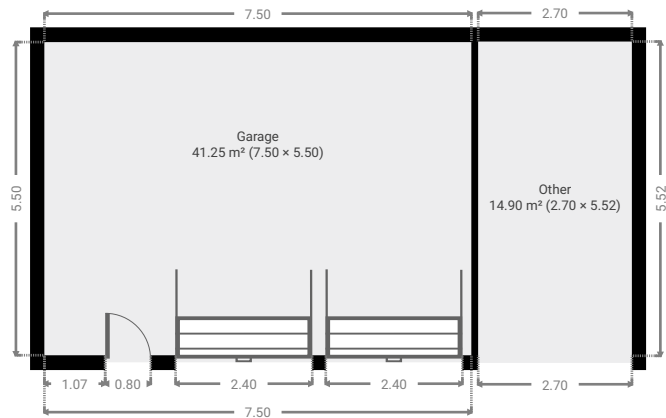


96 Harrow Street

Created on
2021-03-09

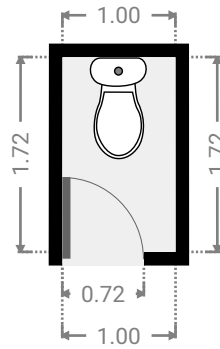
Floors
1

▼ Ground Floor



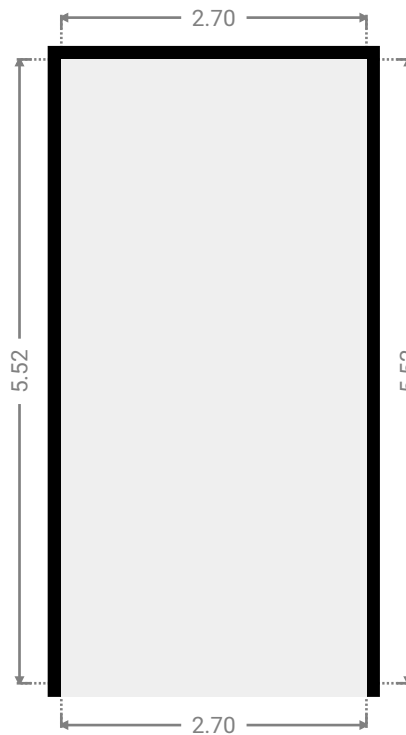
▼ **Toilet**
Ground Floor

WIDTH: 1.00 m • LENGTH: 1.72 m
AREA: 1.73 m² • PERIMETER: 5.45 m



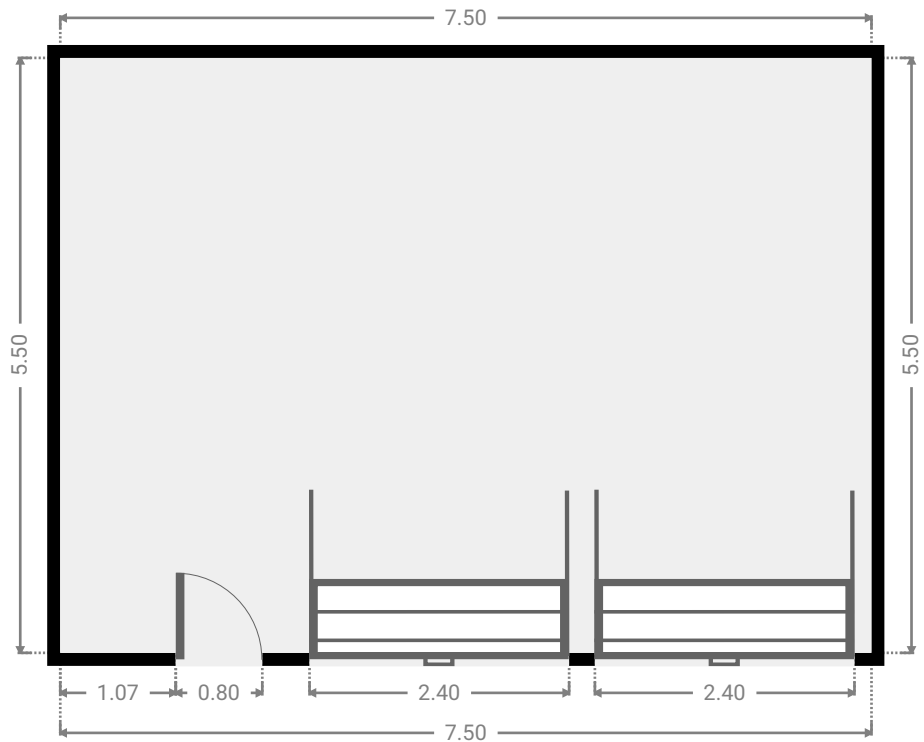
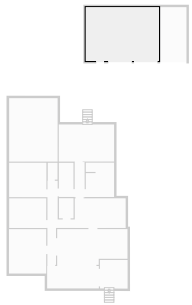
▼ **Other**
Ground Floor

WIDTH: 2.70 m • LENGTH: 5.52 m
AREA: 14.90 m² • PERIMETER: 16.44 m



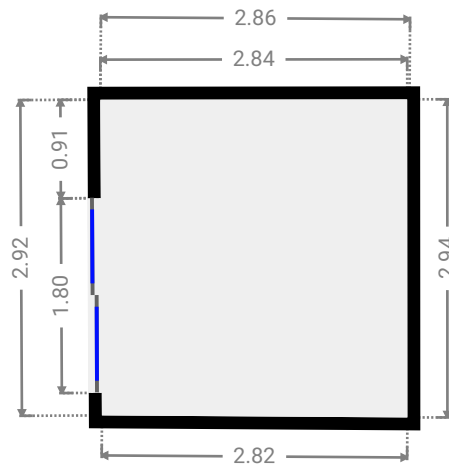
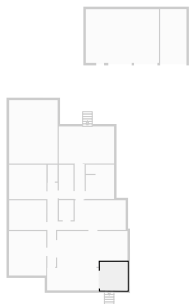
▼ **Garage**
Ground Floor

WIDTH: 7.50 m • LENGTH: 5.50 m
AREA: 41.25 m² • PERIMETER: 26.00 m



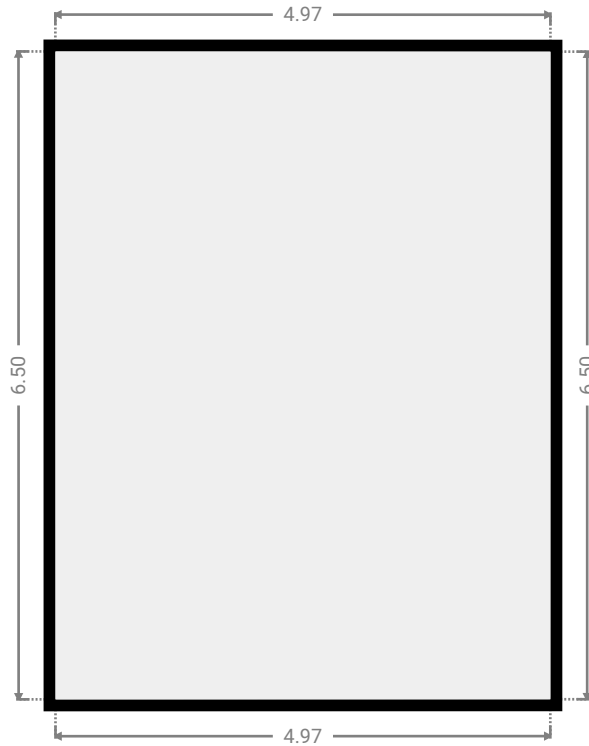
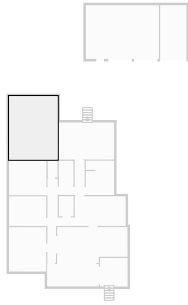
▼ **Other**
Ground Floor

WIDTH: 2.86 m • LENGTH: 2.94 m
AREA: 8.29 m² • PERIMETER: 11.52 m



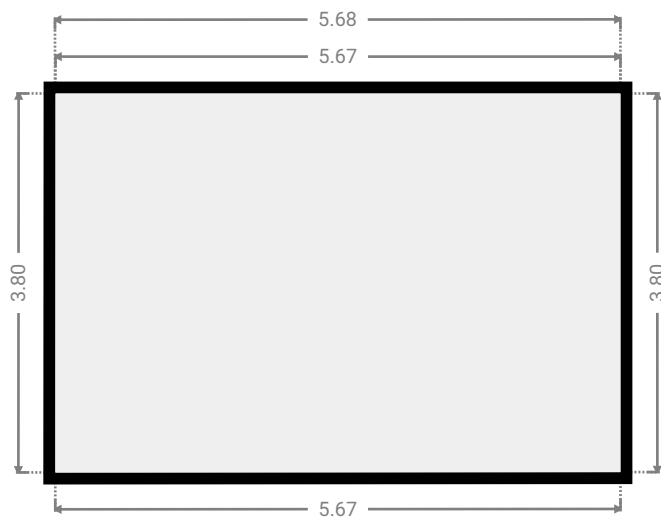
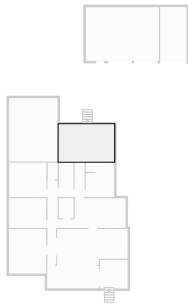
▼ Other
Ground Floor

WIDTH: 4.97 m • LENGTH: 6.50 m
AREA: 32.30 m² • PERIMETER: 22.94 m



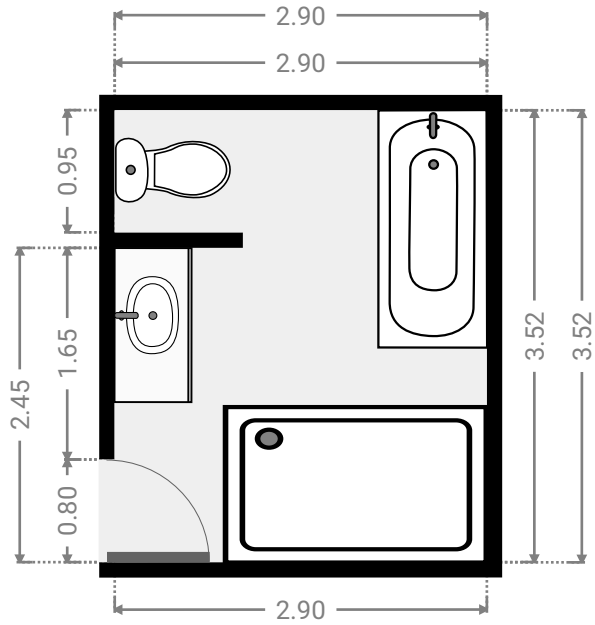
▼ Other
Ground Floor

WIDTH: 5.68 m • LENGTH: 3.80 m
AREA: 21.57 m² • PERIMETER: 18.95 m



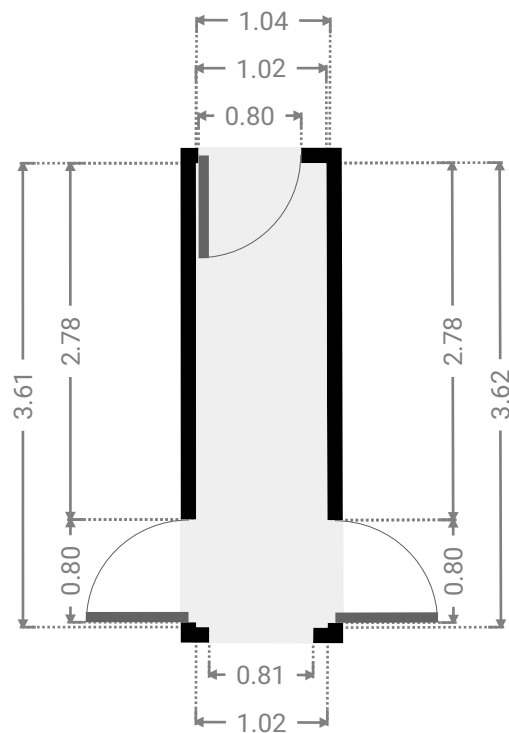
▼ Bathroom
Ground Floor

WIDTH: 2.90 m • LENGTH: 3.52 m
AREA: 10.09 m² • PERIMETER: 14.84 m



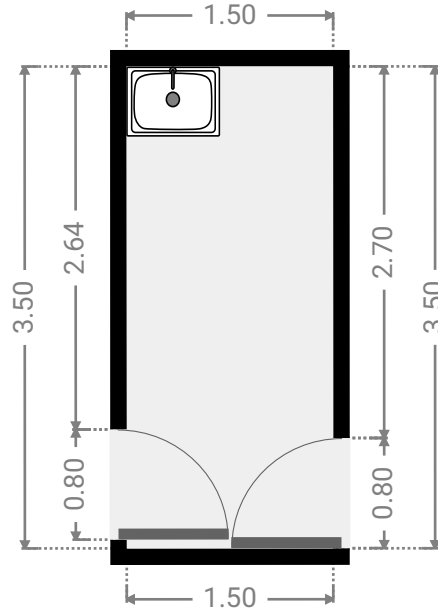
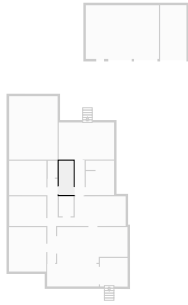
▼ Hall
Ground Floor

WIDTH: 1.04 m • LENGTH: 3.62 m
AREA: 3.69 m² • PERIMETER: 9.27 m



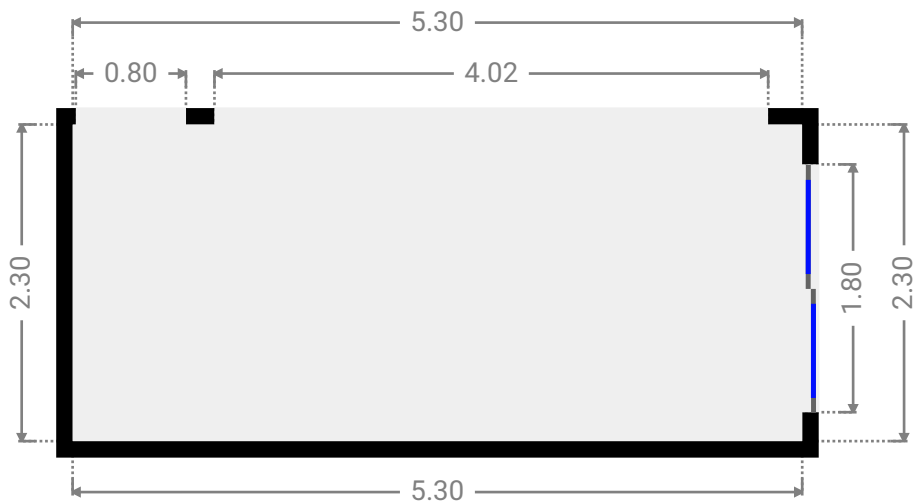
▼ Laundry Room
Ground Floor

WIDTH: 1.50 m • LENGTH: 3.50 m
AREA: 5.25 m² • PERIMETER: 10.00 m



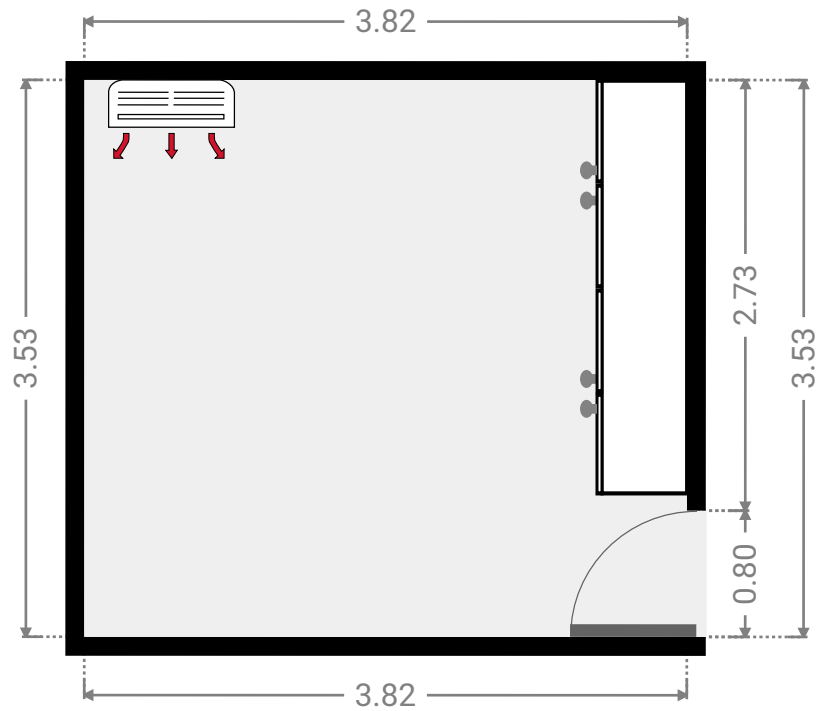
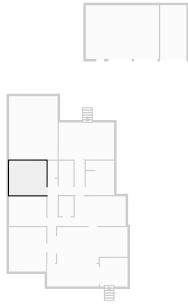
▼ Living Room
Ground Floor

WIDTH: 5.30 m • LENGTH: 2.30 m
AREA: 12.19 m² • PERIMETER: 15.20 m



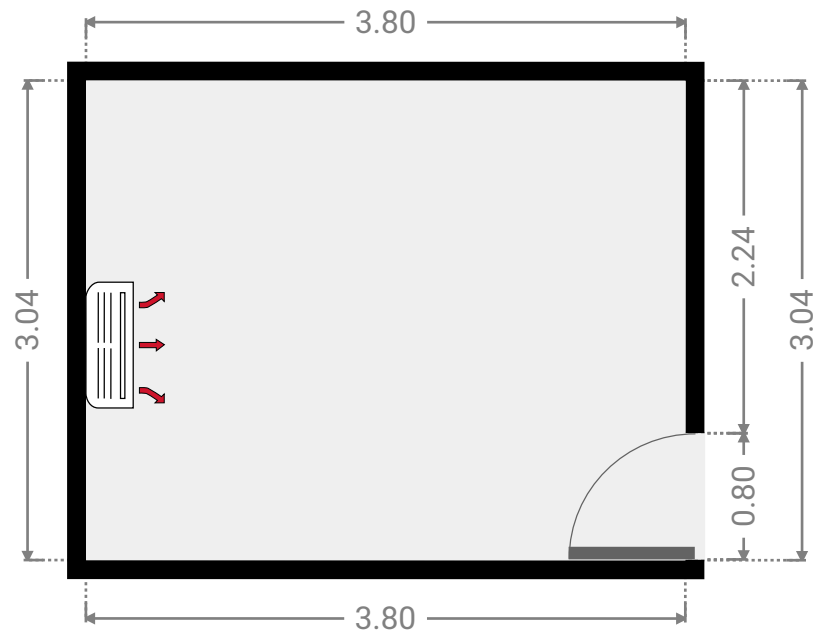
▼ **Bedroom**
Ground Floor

WIDTH: 3.82 m • LENGTH: 3.53 m
AREA: 13.49 m² • PERIMETER: 14.70 m



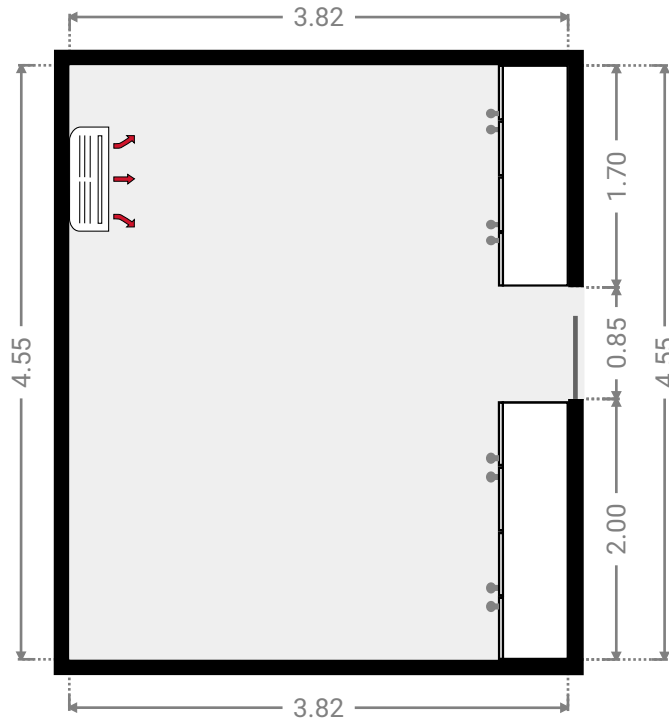
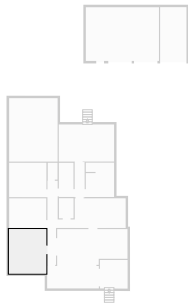
▼ **Bedroom**
Ground Floor

WIDTH: 3.80 m • LENGTH: 3.04 m
AREA: 11.55 m² • PERIMETER: 13.68 m



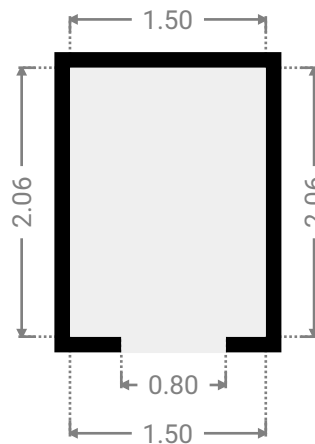
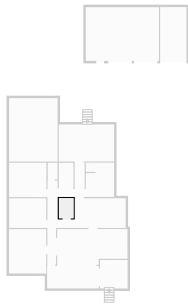
▼ **Master Bedroom**
Ground Floor

WIDTH: 3.82 m • LENGTH: 4.55 m
AREA: 17.38 m² • PERIMETER: 16.74 m



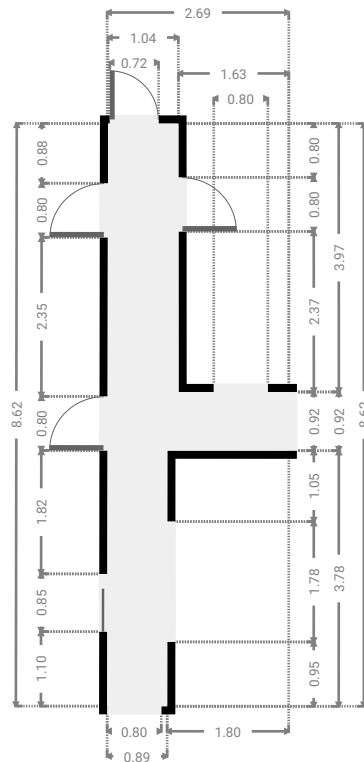
▼ **Closet**
Ground Floor

WIDTH: 1.50 m • LENGTH: 2.06 m
AREA: 3.09 m² • PERIMETER: 7.12 m



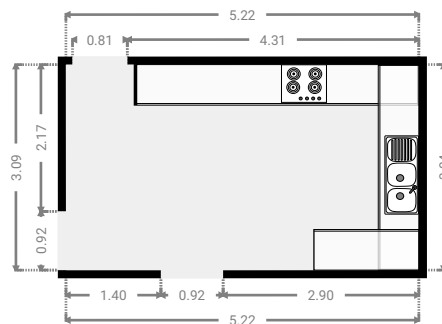
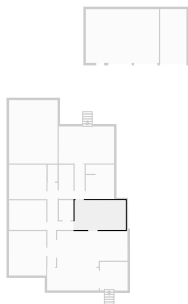
▼ Hall Ground Floor

WIDTH: 2.69 m • LENGTH: 8.62 m
AREA: 9.82 m² • PERIMETER: 22.60 m



▼ Kitchen Ground Floor

WIDTH: 5.22 m • LENGTH: 3.04 m
AREA: 15.87 m² • PERIMETER: 16.52 m



▼ Living Room
Ground Floor

WIDTH: 7.21 m • LENGTH: 3.66 m
AREA: 24.55 m² • PERIMETER: 21.74 m

