

94 Sondra Lena Drive

SUBMITTED BY

Ray White Rockhampton Casey
stockers@cqoz.com

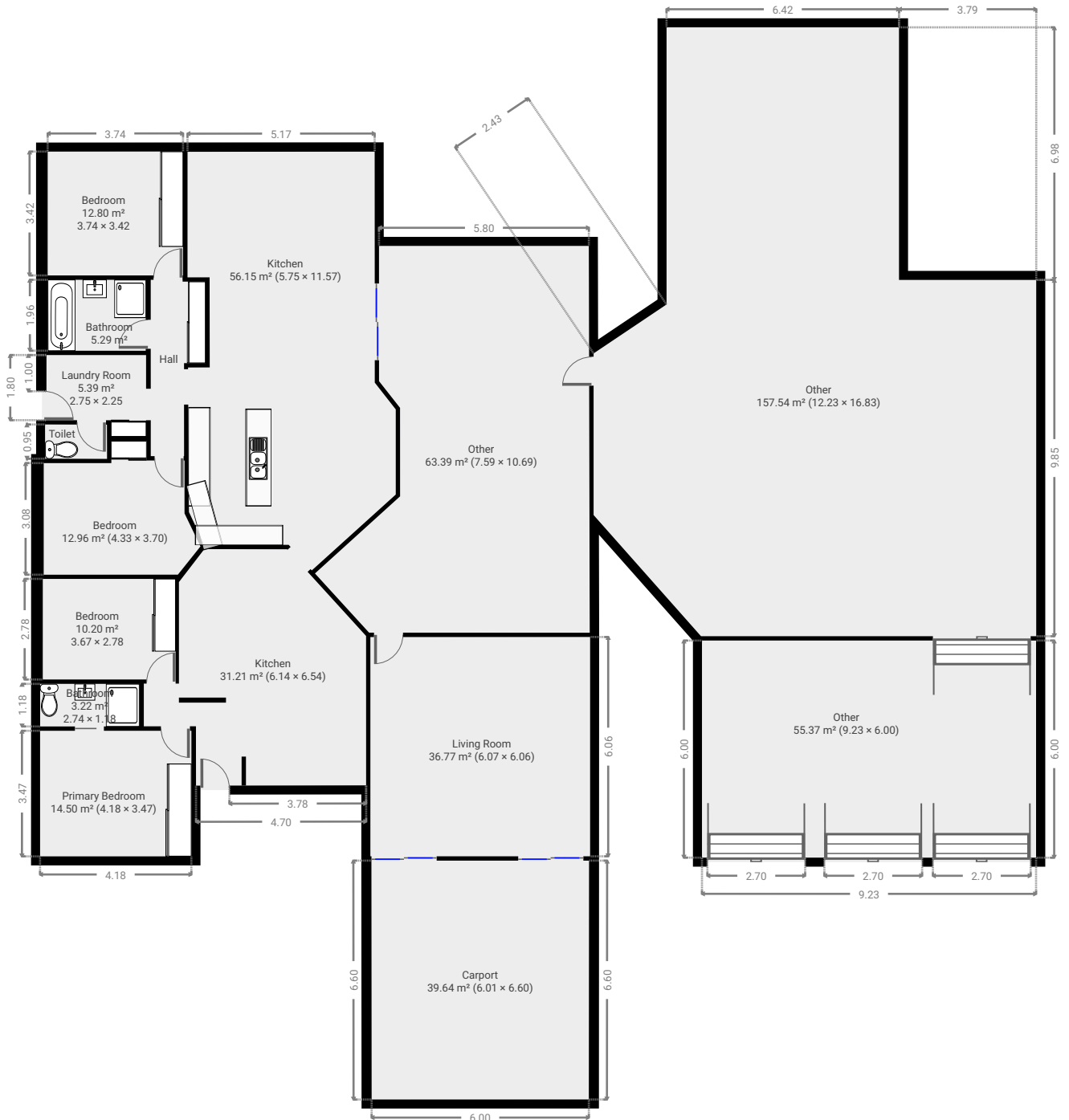
CREATED ON

2022-04-11

Floors

1

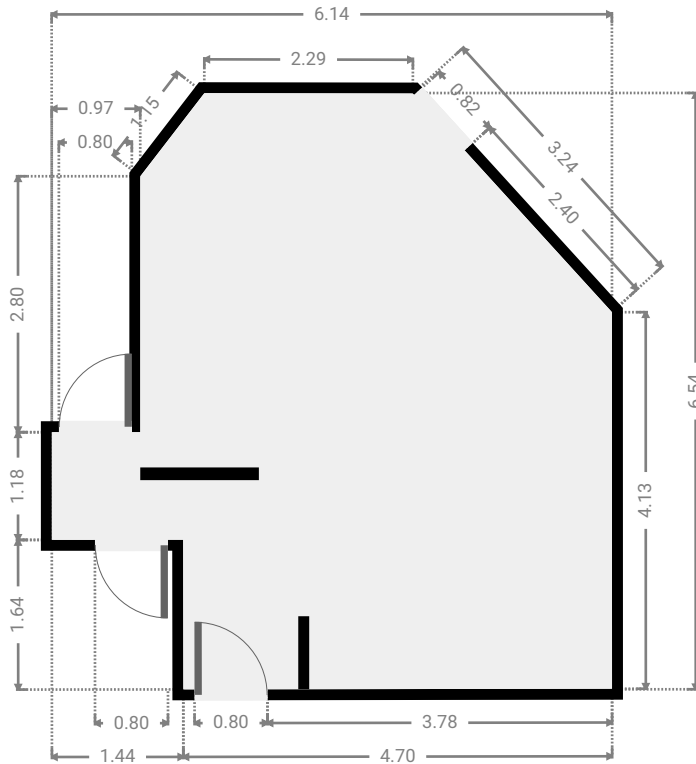
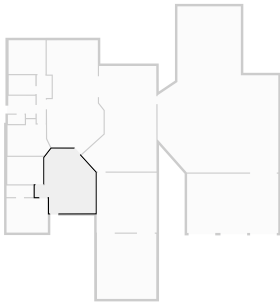
▼ Ground Floor



FLOORS: 1

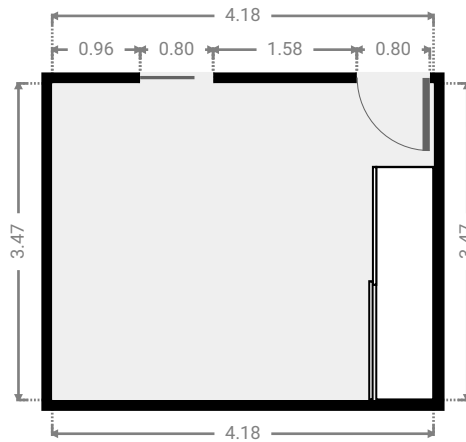
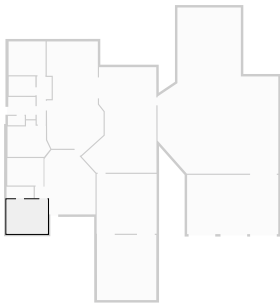
▼ **Kitchen**
Ground Floor

WIDTH: 6.14 m • LENGTH: 6.54 m
AREA: 31.21 m² • PERIMETER: 23.54 m



▼ **Primary Bedroom**
Ground Floor

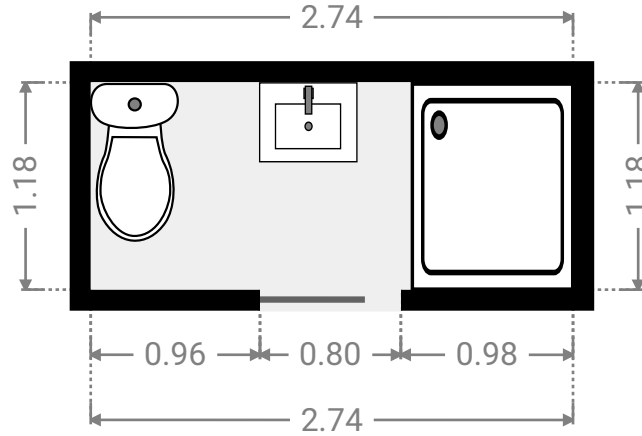
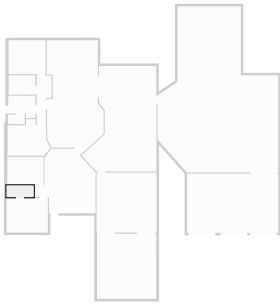
WIDTH: 4.18 m • LENGTH: 3.47 m
AREA: 14.50 m² • PERIMETER: 15.30 m



FLOORS: 1

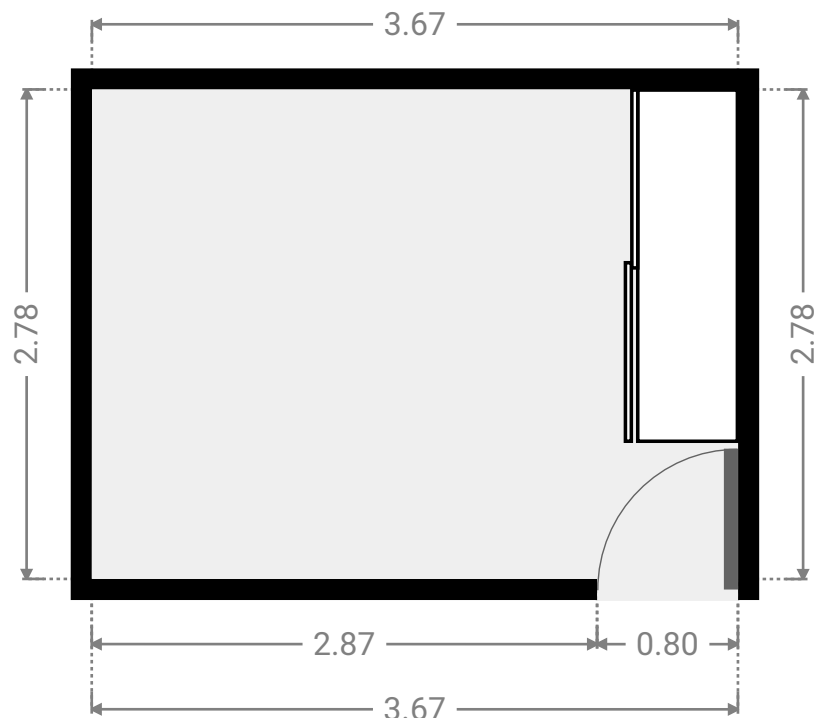
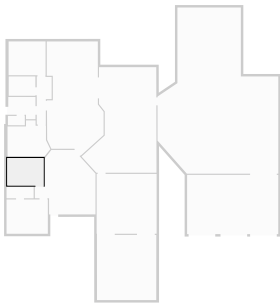
▼ **Bathroom**
Ground Floor

WIDTH: 2.74 m • LENGTH: 1.18 m
AREA: 3.22 m² • PERIMETER: 7.83 m



▼ **Bedroom**
Ground Floor

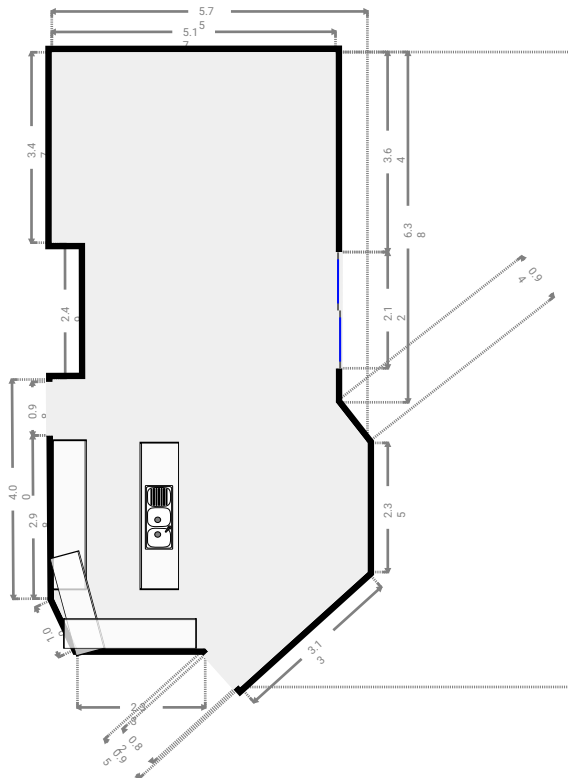
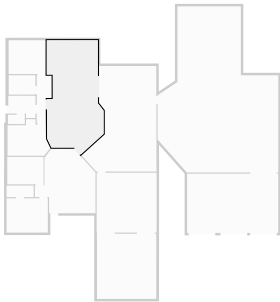
WIDTH: 3.67 m • LENGTH: 2.78 m
AREA: 10.20 m² • PERIMETER: 12.90 m



FLOORS: 1

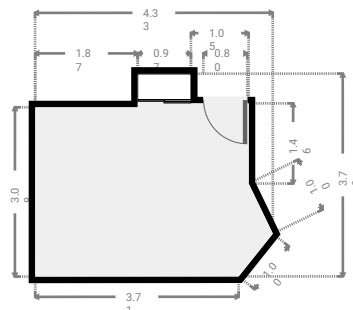
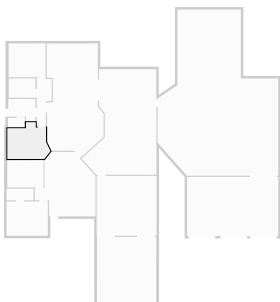
▼ **Kitchen**
Ground Floor

WIDTH: 5.75 m • LENGTH: 11.57 m
AREA: 56.15 m² • PERIMETER: 33.42 m



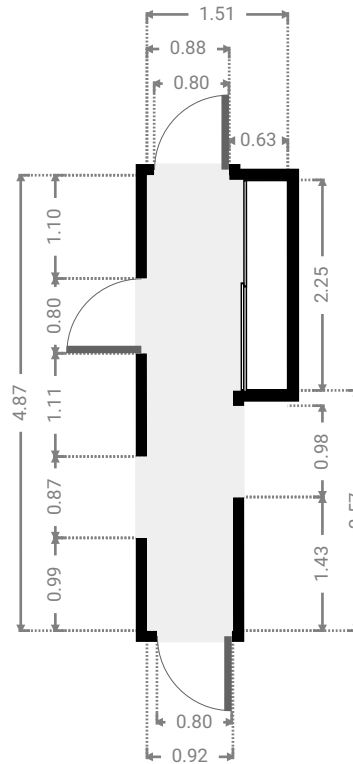
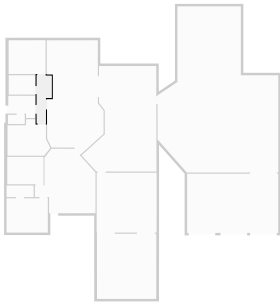
▼ **Bedroom**
Ground Floor

WIDTH: 4.33 m • LENGTH: 3.70 m
AREA: 12.96 m² • PERIMETER: 15.31 m



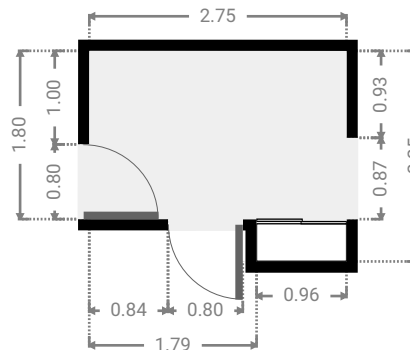
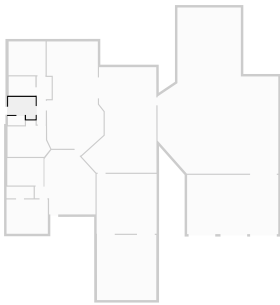
▼ **Hall**
Ground Floor

WIDTH: 1.51 m • LENGTH: 4.87 m
AREA: 5.80 m² • PERIMETER: 12.76 m



▼ **Laundry Room**
Ground Floor

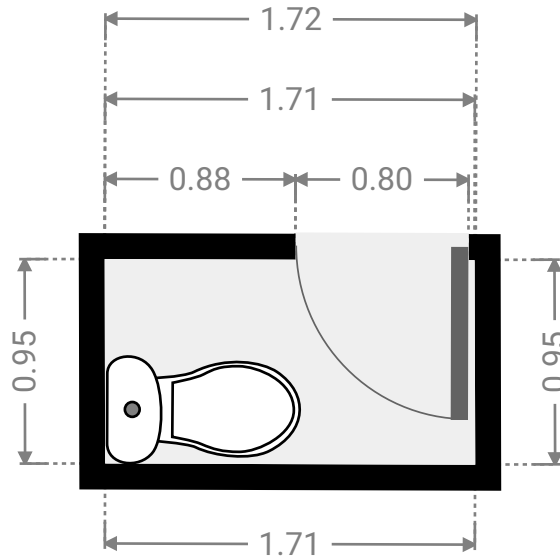
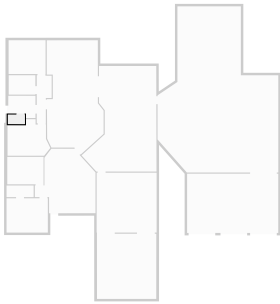
WIDTH: 2.75 m • LENGTH: 2.25 m
AREA: 5.39 m² • PERIMETER: 10.01 m



FLOORS: 1

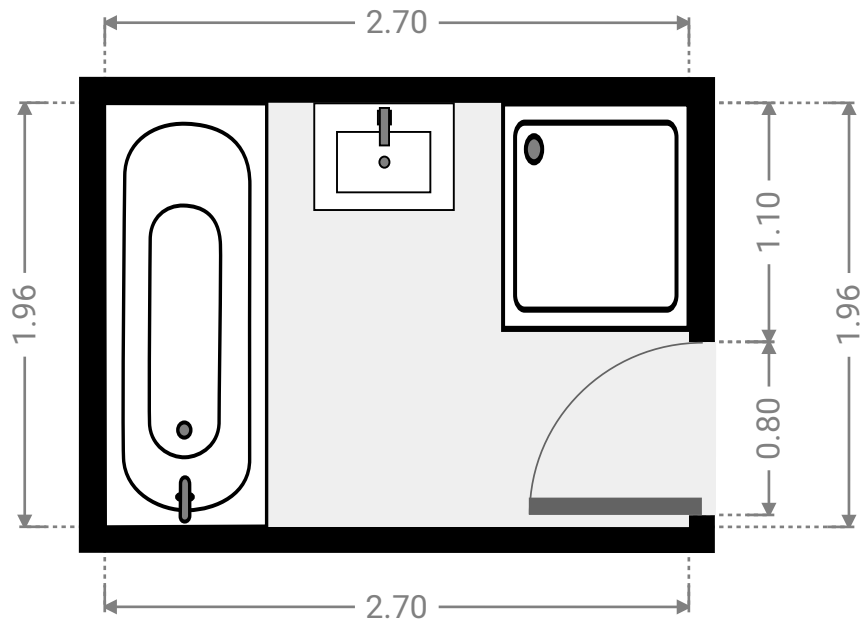
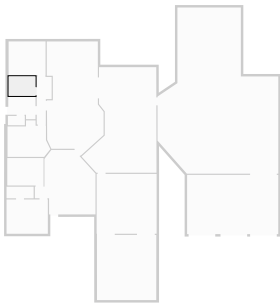
▼ **Toilet**
Ground Floor

WIDTH: 1.72 m • LENGTH: 0.95 m
AREA: 1.62 m² • PERIMETER: 5.31 m



▼ **Bathroom**
Ground Floor

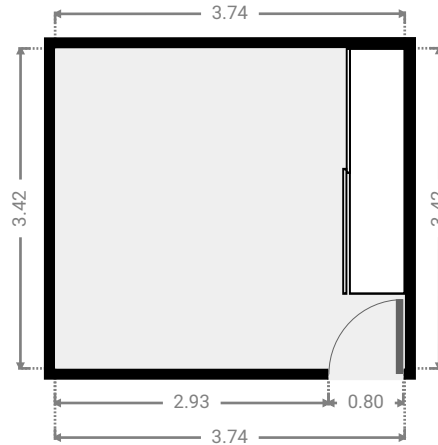
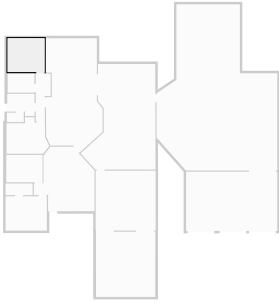
WIDTH: 2.70 m • LENGTH: 1.96 m
AREA: 5.29 m² • PERIMETER: 9.32 m



FLOORS: 1

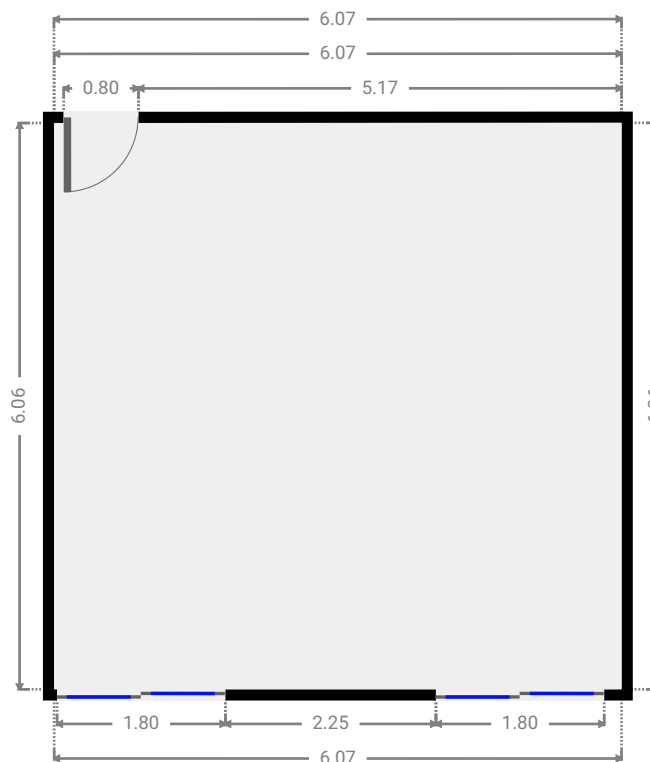
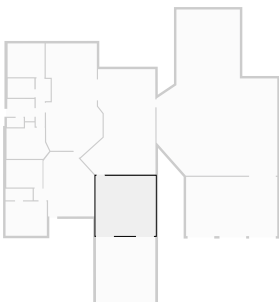
▼ **Bedroom**
Ground Floor

WIDTH: 3.74 m • LENGTH: 3.42 m
AREA: 12.80 m² • PERIMETER: 14.33 m



▼ **Living Room**
Ground Floor

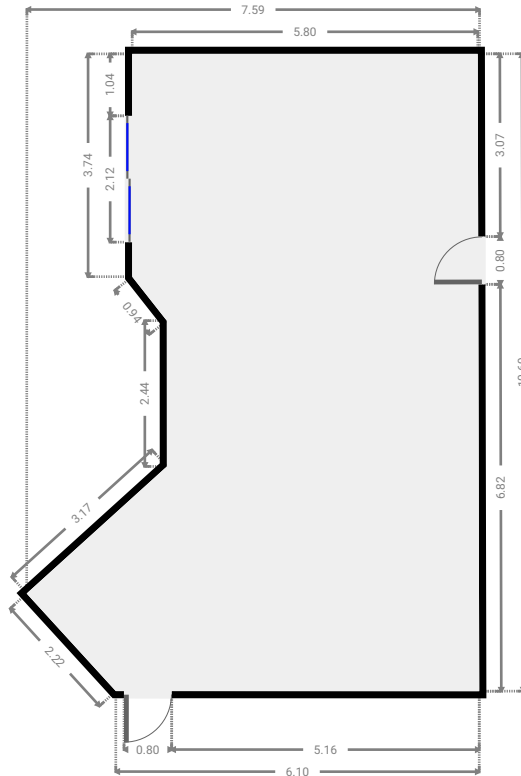
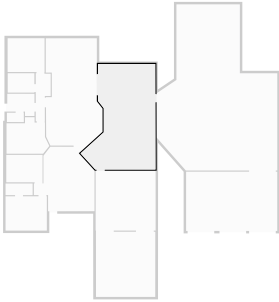
WIDTH: 6.07 m • LENGTH: 6.06 m
AREA: 36.77 m² • PERIMETER: 24.26 m



FLOORS: 1

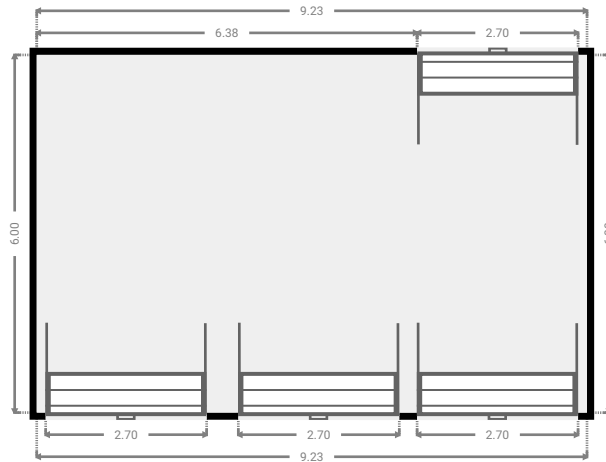
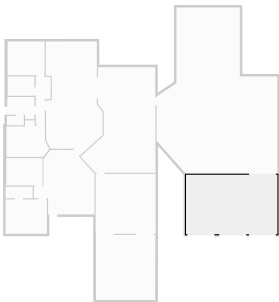
▼ Other
Ground Floor

WIDTH: 7.59 m • LENGTH: 10.69 m
AREA: 63.39 m² • PERIMETER: 35.09 m



▼ Other
Ground Floor

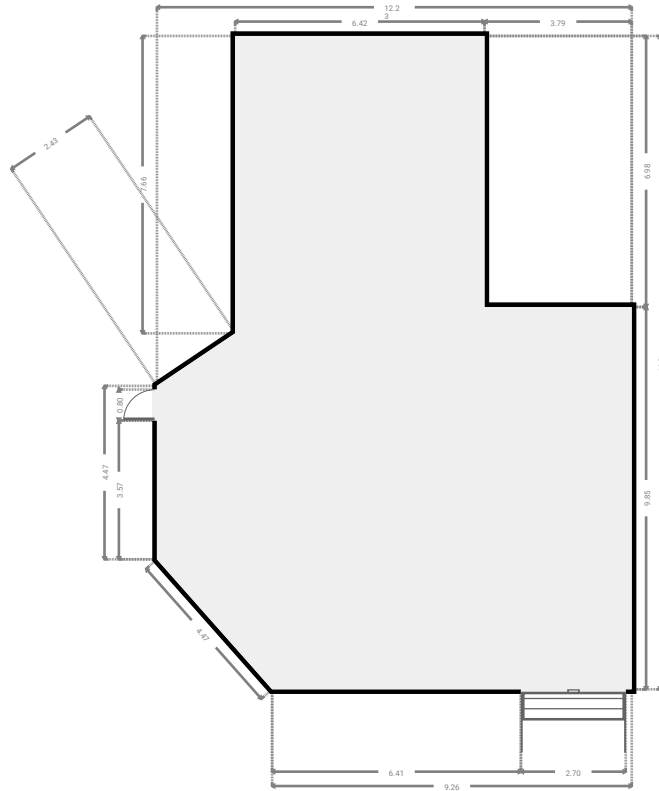
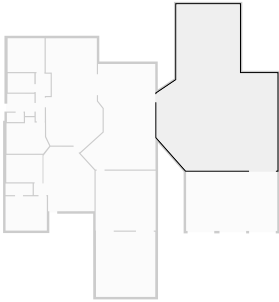
WIDTH: 9.23 m • LENGTH: 6.00 m
AREA: 55.37 m² • PERIMETER: 30.46 m



FLOORS: 1

▼ **Other**
Ground Floor

WIDTH: 12.23 m • LENGTH: 16.83 m
AREA: 157.54 m² • PERIMETER: 55.33 m



▼ **Carpport**
Ground Floor

WIDTH: 6.01 m • LENGTH: 6.60 m
AREA: 39.64 m² • PERIMETER: 25.21 m

