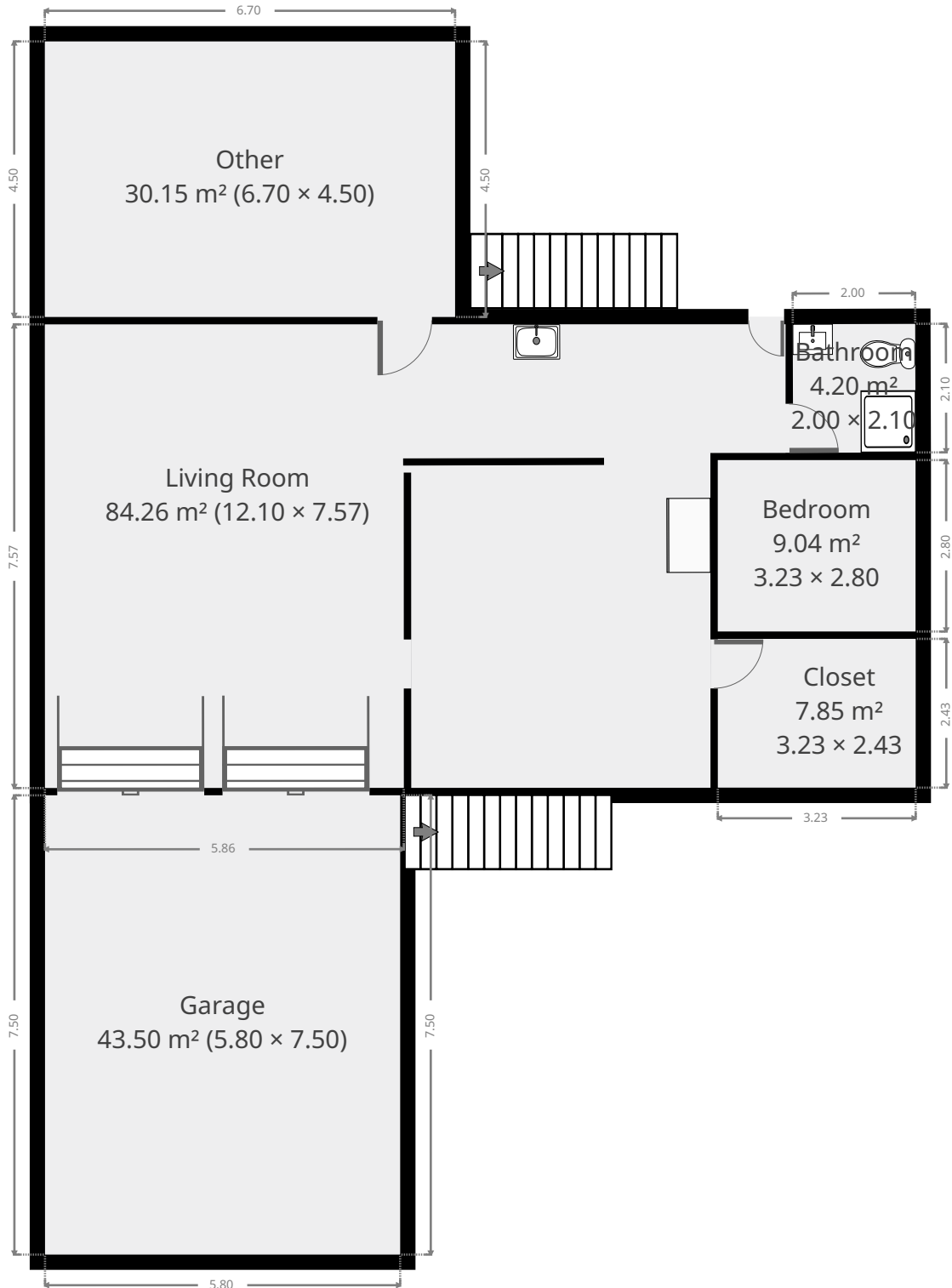


# 93 Donovan Crescent

## Ground Floor



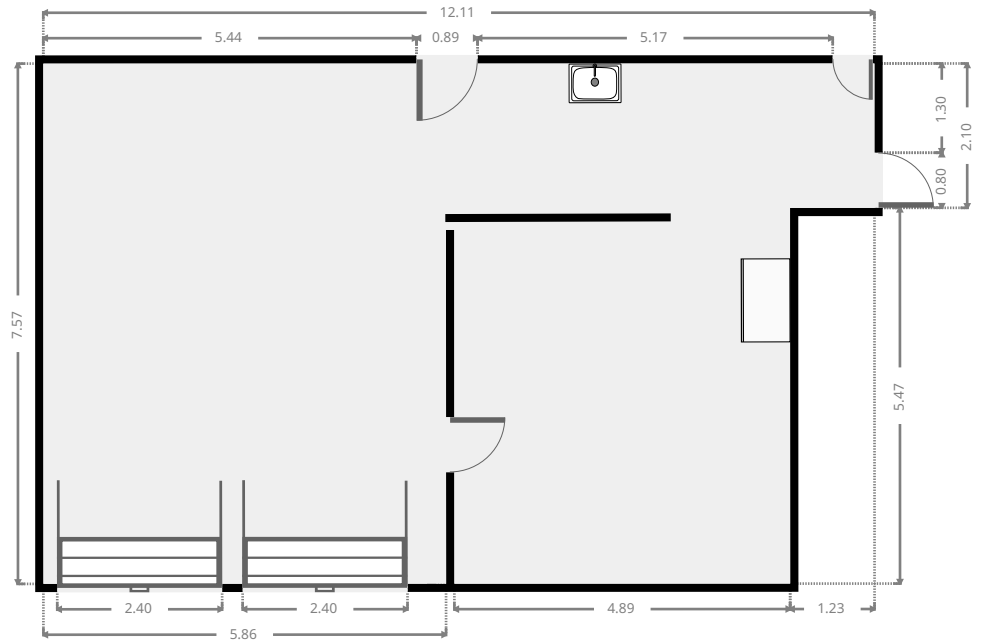
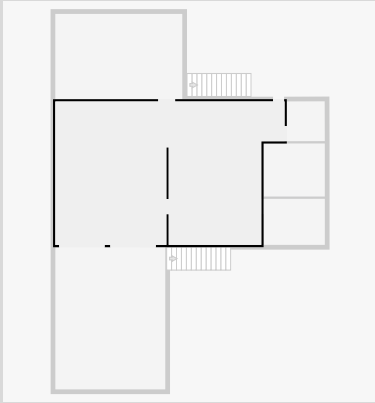
THIS FLOORPLAN IS PROVIDED WITHOUT WARRANTY OF ANY KIND. SENSOPIA DISCLAIMS ANY WARRANTY INCLUDING, WITHOUT LIMITATION, SATISFACTORY QUALITY OR ACCURACY OF DIMENSIONS.



# 93 Donovan Crescent

## Living Room

Width: 7.57 m  
Length: 12.10 m  
Area: 84.26 m<sup>2</sup>  
Perimeter: 49.64 m



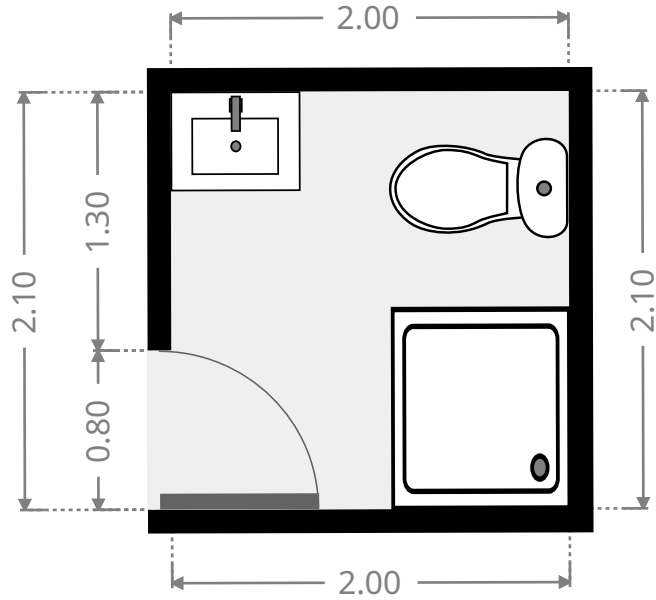
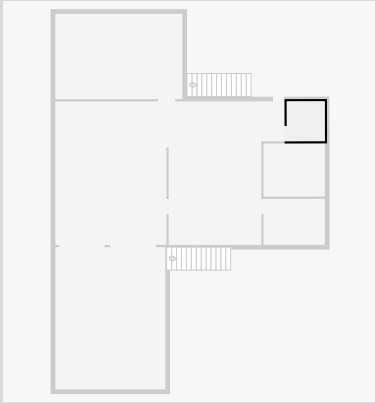
THIS FLOORPLAN IS PROVIDED WITHOUT WARRANTY OF ANY KIND. SENSOPIA DISCLAIMS ANY WARRANTY INCLUDING, WITHOUT LIMITATION, SATISFACTORY QUALITY OR ACCURACY OF DIMENSIONS.



# 93 Donovan Crescent

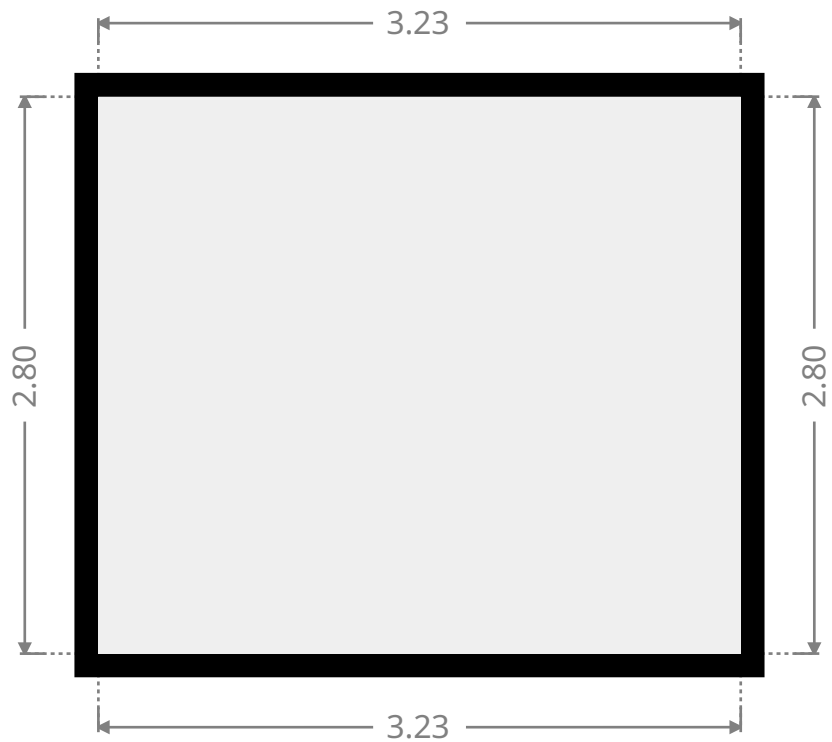
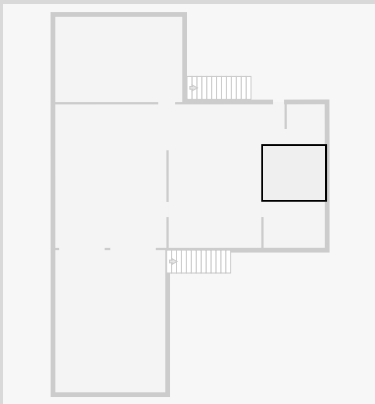
## Bathroom

Width: 2.00 m  
Length: 2.10 m  
Area: 4.20 m<sup>2</sup>  
Perimeter: 8.20 m

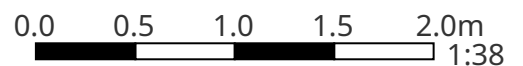


## Bedroom

Width: 2.80 m  
Length: 3.23 m  
Area: 9.04 m<sup>2</sup>  
Perimeter: 12.06 m



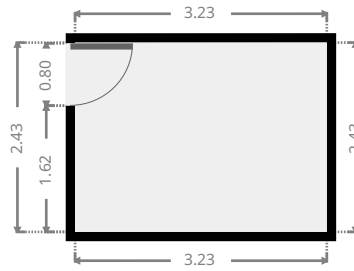
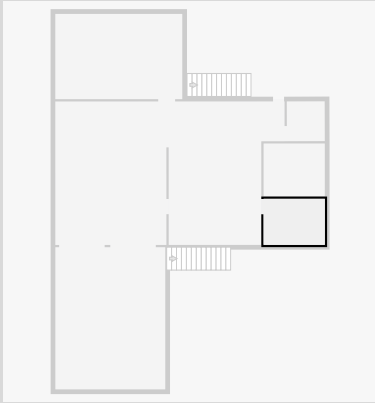
THIS FLOORPLAN IS PROVIDED WITHOUT WARRANTY OF ANY KIND. SENSOPIA DISCLAIMS ANY WARRANTY INCLUDING, WITHOUT LIMITATION, SATISFACTORY QUALITY OR ACCURACY OF DIMENSIONS.



# 93 Donovan Crescent

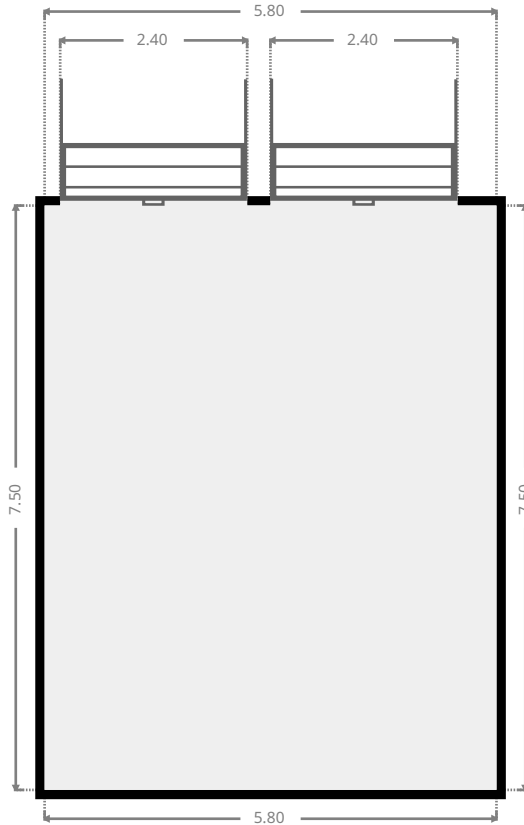
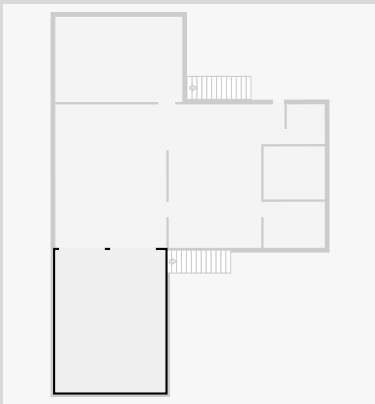
## Closet

Width: 2.43 m  
Length: 3.23 m  
Area: 7.85 m<sup>2</sup>  
Perimeter: 11.32 m



## Garage

Width: 5.80 m  
Length: 7.50 m  
Area: 43.50 m<sup>2</sup>  
Perimeter: 26.60 m



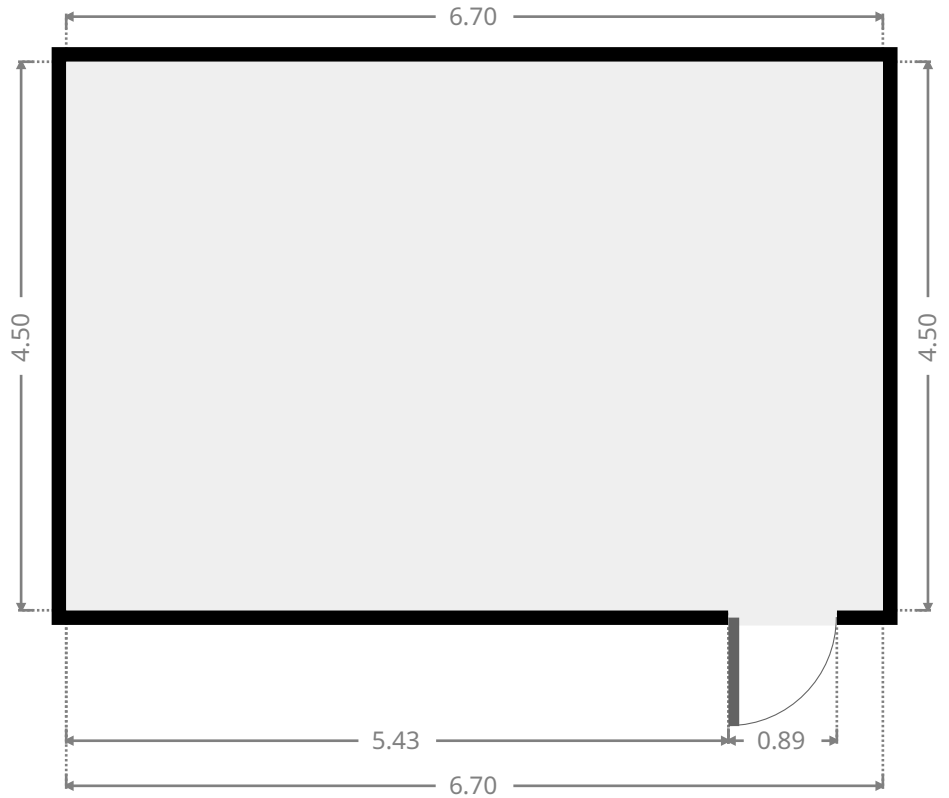
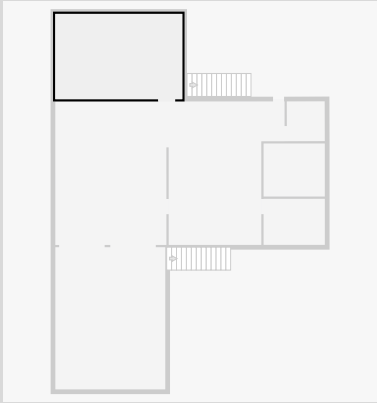
THIS FLOORPLAN IS PROVIDED WITHOUT WARRANTY OF ANY KIND. SENSOPIA DISCLAIMS ANY WARRANTY INCLUDING, WITHOUT LIMITATION, SATISFACTORY QUALITY OR ACCURACY OF DIMENSIONS.



# 93 Donovan Crescent

## Other

Width: 4.50 m  
Length: 6.70 m  
Area: 30.15 m<sup>2</sup>  
Perimeter: 22.40 m



# 93 Donovan Crescent

## 1st Floor



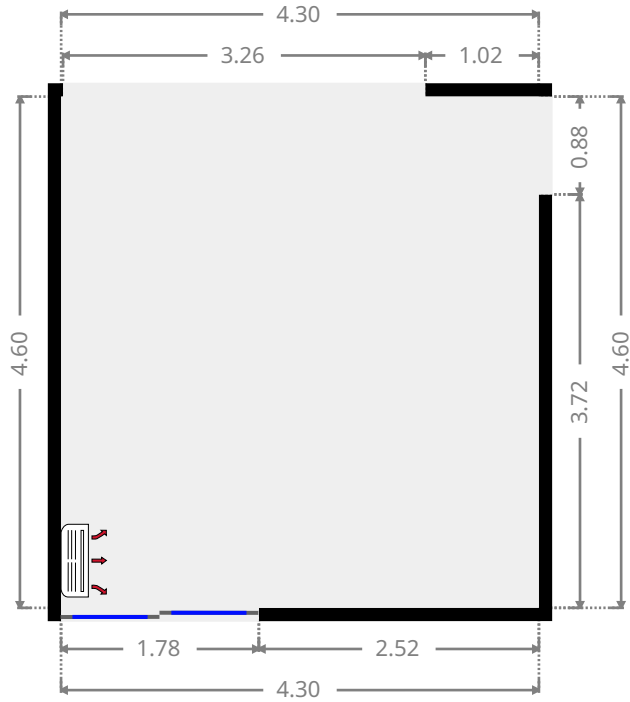
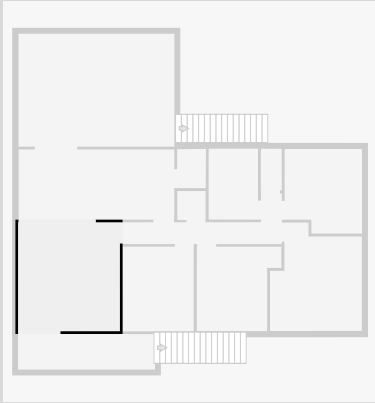
THIS FLOORPLAN IS PROVIDED WITHOUT WARRANTY OF ANY KIND. SENSOPIA DISCLAIMS ANY WARRANTY INCLUDING, WITHOUT LIMITATION, SATISFACTORY QUALITY OR ACCURACY OF DIMENSIONS.



# 93 Donovan Crescent

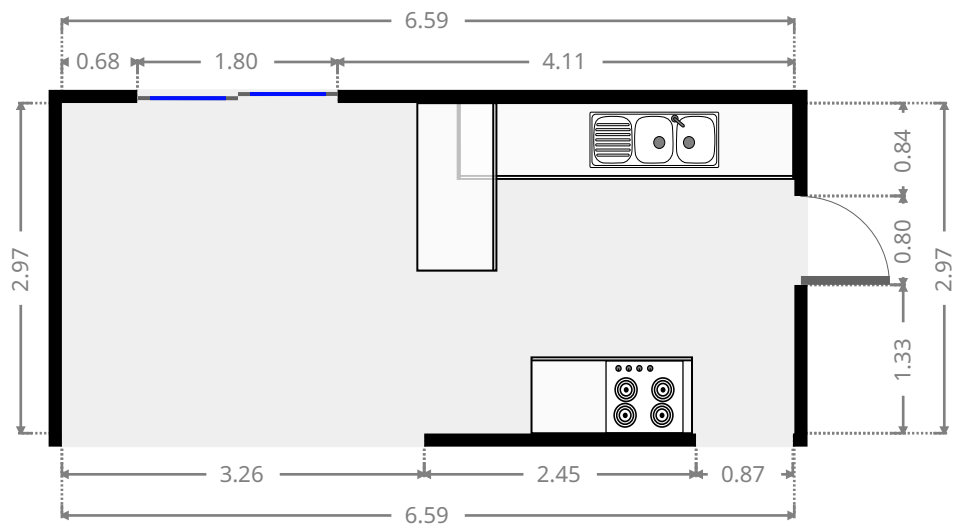
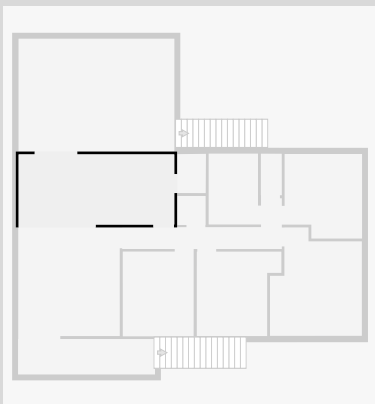
## Living Room

Width: 4.30 m  
 Length: 4.60 m  
 Area: 19.77 m<sup>2</sup>  
 Perimeter: 17.80 m



## Kitchen

Width: 2.97 m  
 Length: 6.59 m  
 Area: 19.57 m<sup>2</sup>  
 Perimeter: 19.12 m



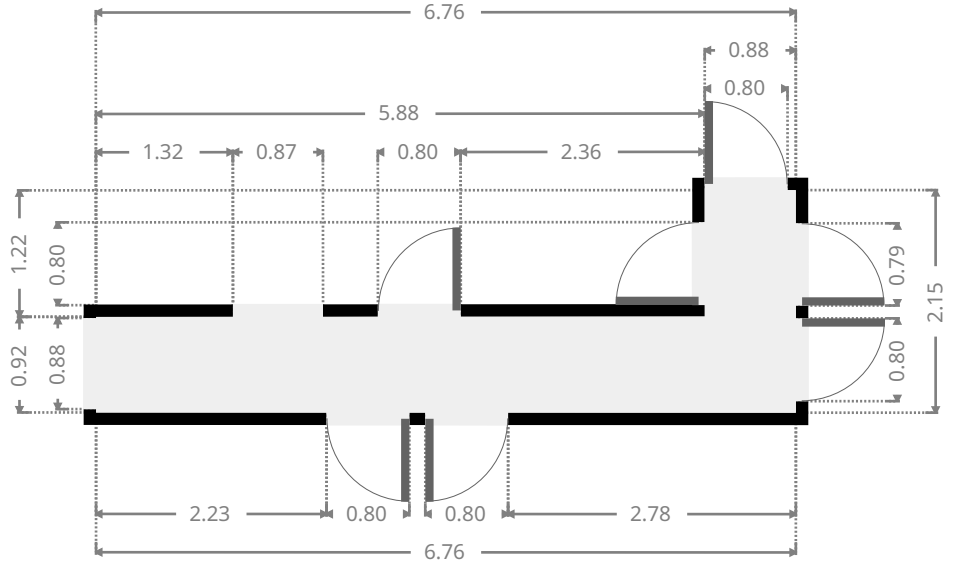
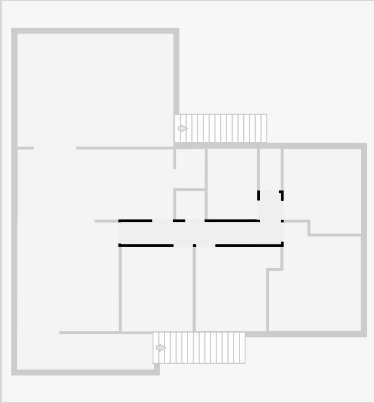
THIS FLOORPLAN IS PROVIDED WITHOUT WARRANTY OF ANY KIND. SENSOPIA DISCLAIMS ANY WARRANTY INCLUDING, WITHOUT LIMITATION, SATISFACTORY QUALITY OR ACCURACY OF DIMENSIONS.



# 93 Donovan Crescent

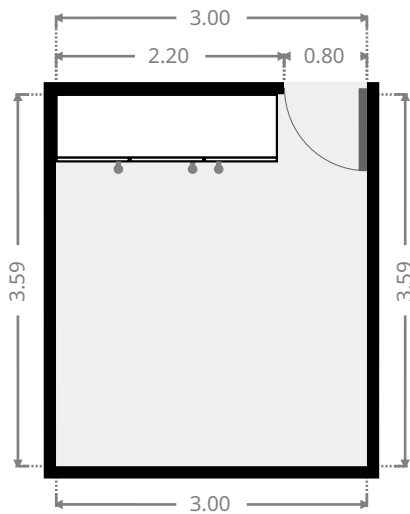
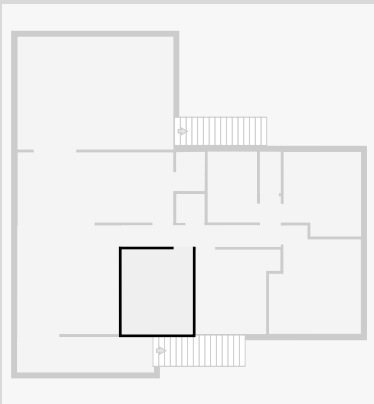
## Hall

Width: 2.15 m  
 Length: 6.76 m  
 Area: 7.34 m<sup>2</sup>  
 Perimeter: 17.81 m

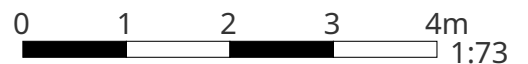


## Bedroom

Width: 3.00 m  
 Length: 3.59 m  
 Area: 10.77 m<sup>2</sup>  
 Perimeter: 13.18 m



THIS FLOORPLAN IS PROVIDED WITHOUT WARRANTY OF ANY KIND. SENSOPIA DISCLAIMS ANY WARRANTY INCLUDING, WITHOUT LIMITATION, SATISFACTORY QUALITY OR ACCURACY OF DIMENSIONS.

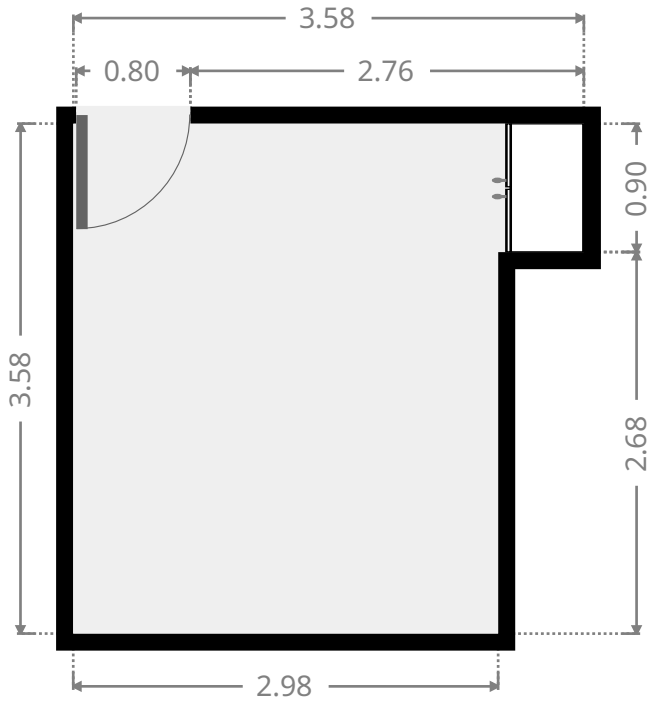
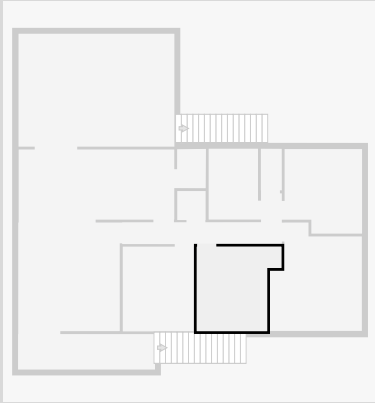




# 93 Donovan Crescent

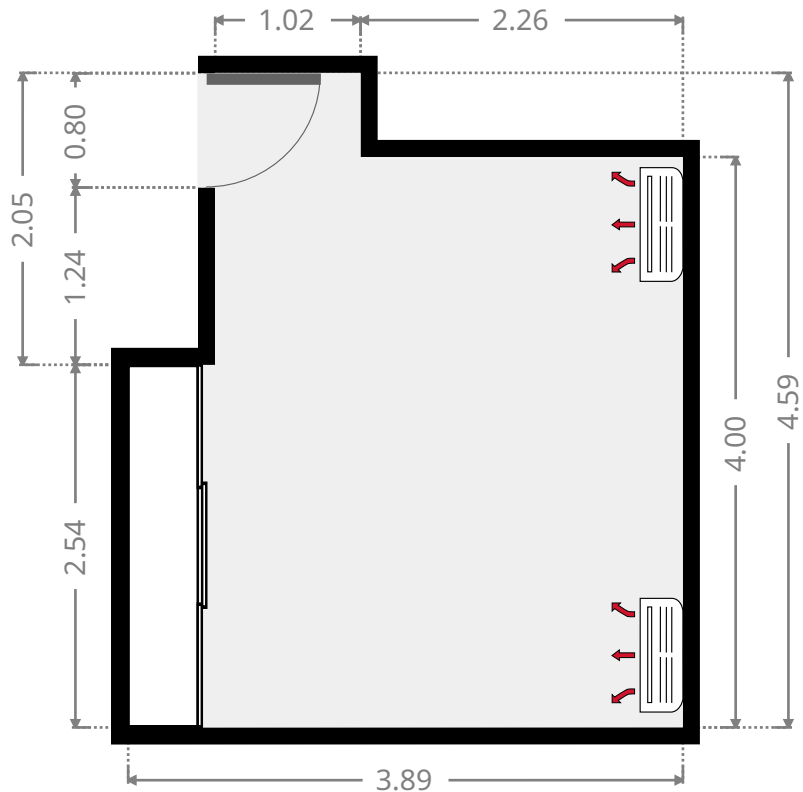
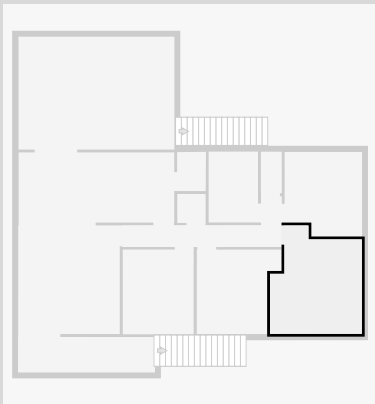
## Bedroom

Width: 3.58 m  
 Length: 3.58 m  
 Area: 11.20 m<sup>2</sup>  
 Perimeter: 14.31 m

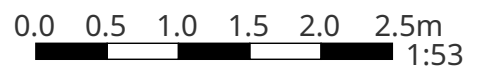


## Master Bedroom

Width: 3.89 m  
 Length: 4.59 m  
 Area: 15.27 m<sup>2</sup>  
 Perimeter: 16.96 m



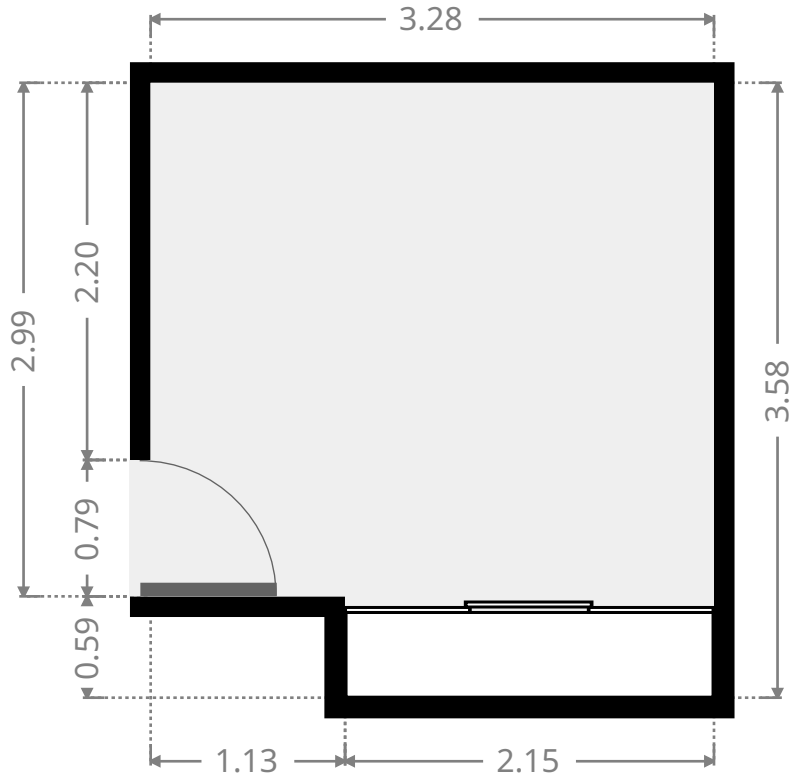
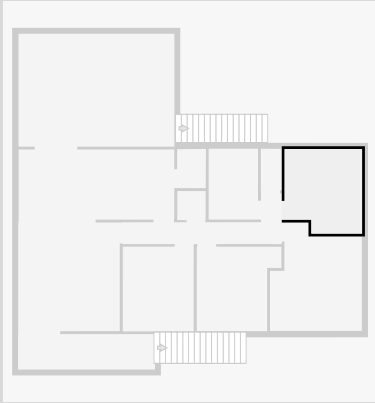
THIS FLOORPLAN IS PROVIDED WITHOUT WARRANTY OF ANY KIND. SENSOPIA DISCLAIMS ANY WARRANTY INCLUDING, WITHOUT LIMITATION, SATISFACTORY QUALITY OR ACCURACY OF DIMENSIONS.



# 93 Donovan Crescent

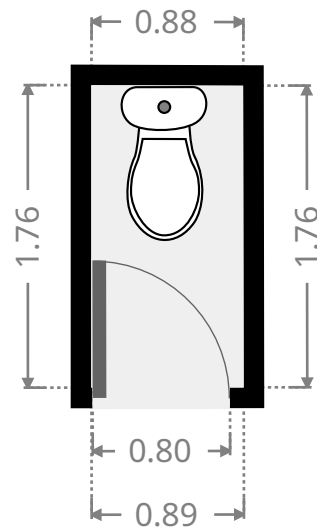
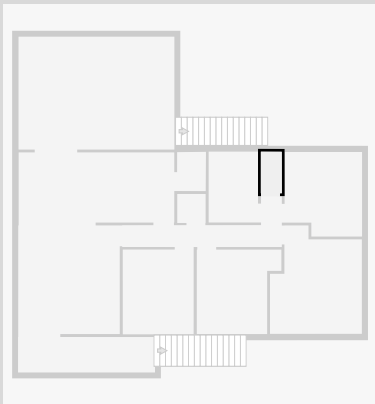
## Bedroom

Width: 3.28 m  
 Length: 3.58 m  
 Area: 11.07 m<sup>2</sup>  
 Perimeter: 13.72 m

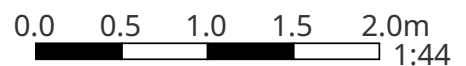


## Toilet / Half Bath

Width: 0.89 m  
 Length: 1.76 m  
 Area: 1.56 m<sup>2</sup>  
 Perimeter: 5.29 m



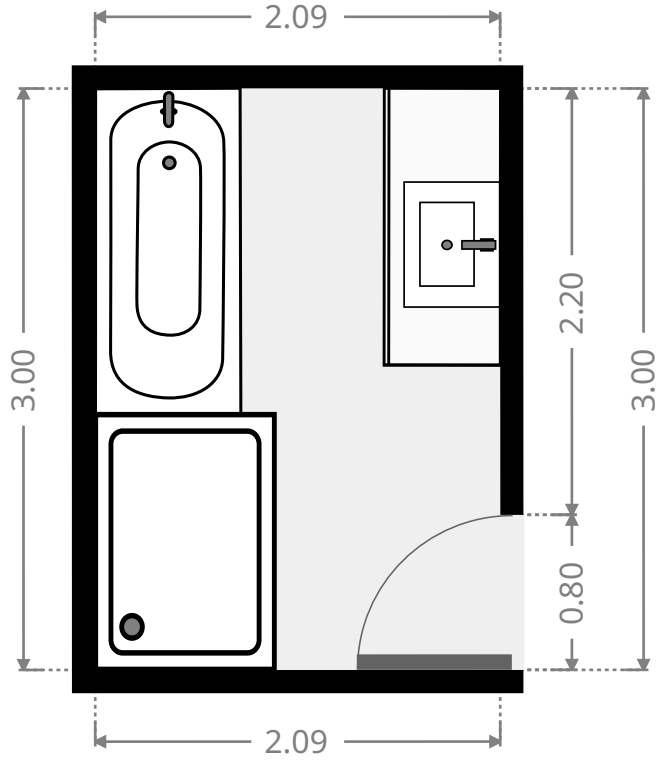
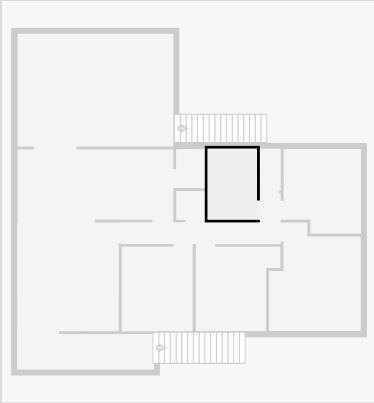
THIS FLOORPLAN IS PROVIDED WITHOUT WARRANTY OF ANY KIND. SENSOPIA DISCLAIMS ANY WARRANTY INCLUDING, WITHOUT LIMITATION, SATISFACTORY QUALITY OR ACCURACY OF DIMENSIONS.



# 93 Donovan Crescent

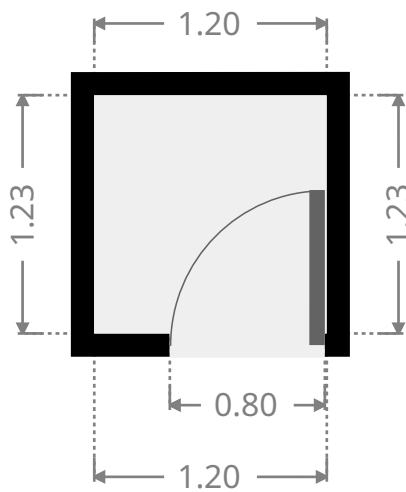
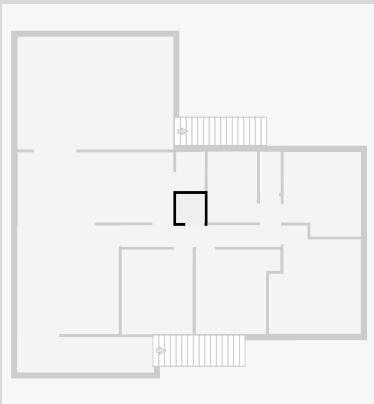
## Bathroom

Width: 2.09 m  
Length: 3.00 m  
Area: 6.27 m<sup>2</sup>  
Perimeter: 10.18 m



## Closet

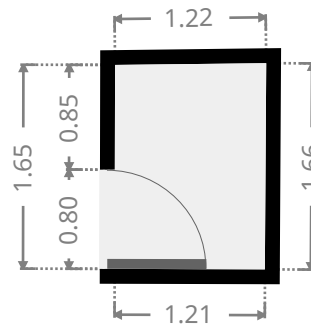
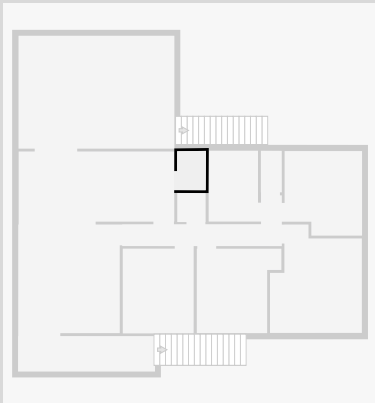
Width: 1.20 m  
Length: 1.23 m  
Area: 1.48 m<sup>2</sup>  
Perimeter: 4.86 m



# 93 Donovan Crescent

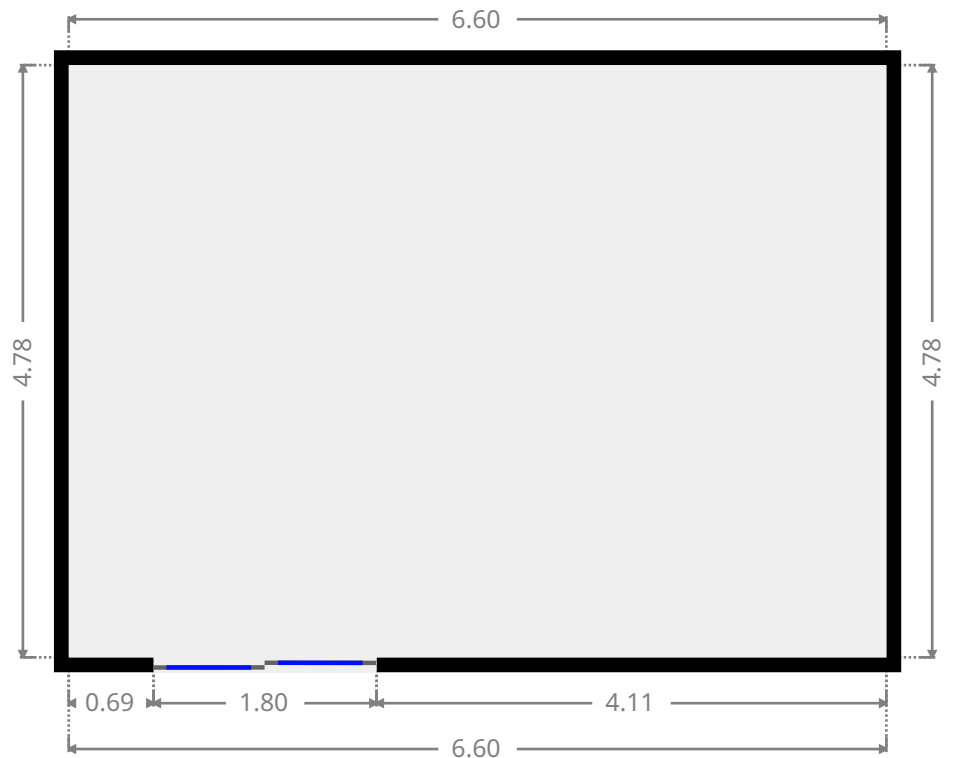
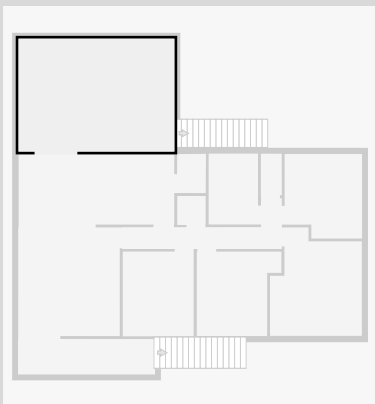
## Other

Width: 1.22 m  
 Length: 1.66 m  
 Area: 2.01 m<sup>2</sup>  
 Perimeter: 5.74 m

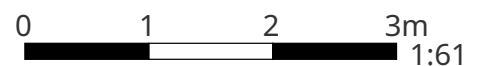


## Other

Width: 4.78 m  
 Length: 6.60 m  
 Area: 31.55 m<sup>2</sup>  
 Perimeter: 22.76 m



THIS FLOORPLAN IS PROVIDED WITHOUT WARRANTY OF ANY KIND. SENSOPIA DISCLAIMS ANY WARRANTY INCLUDING, WITHOUT LIMITATION, SATISFACTORY QUALITY OR ACCURACY OF DIMENSIONS.



# 93 Donovan Crescent

## Other

Width: 1.50 m  
Length: 5.80 m  
Area: 8.70 m<sup>2</sup>  
Perimeter: 14.60 m

