

# 93 Clifton Street

**SUBMITTED BY**  
Ray White Rockhampton Casey  
stockers@cqoz.com

---

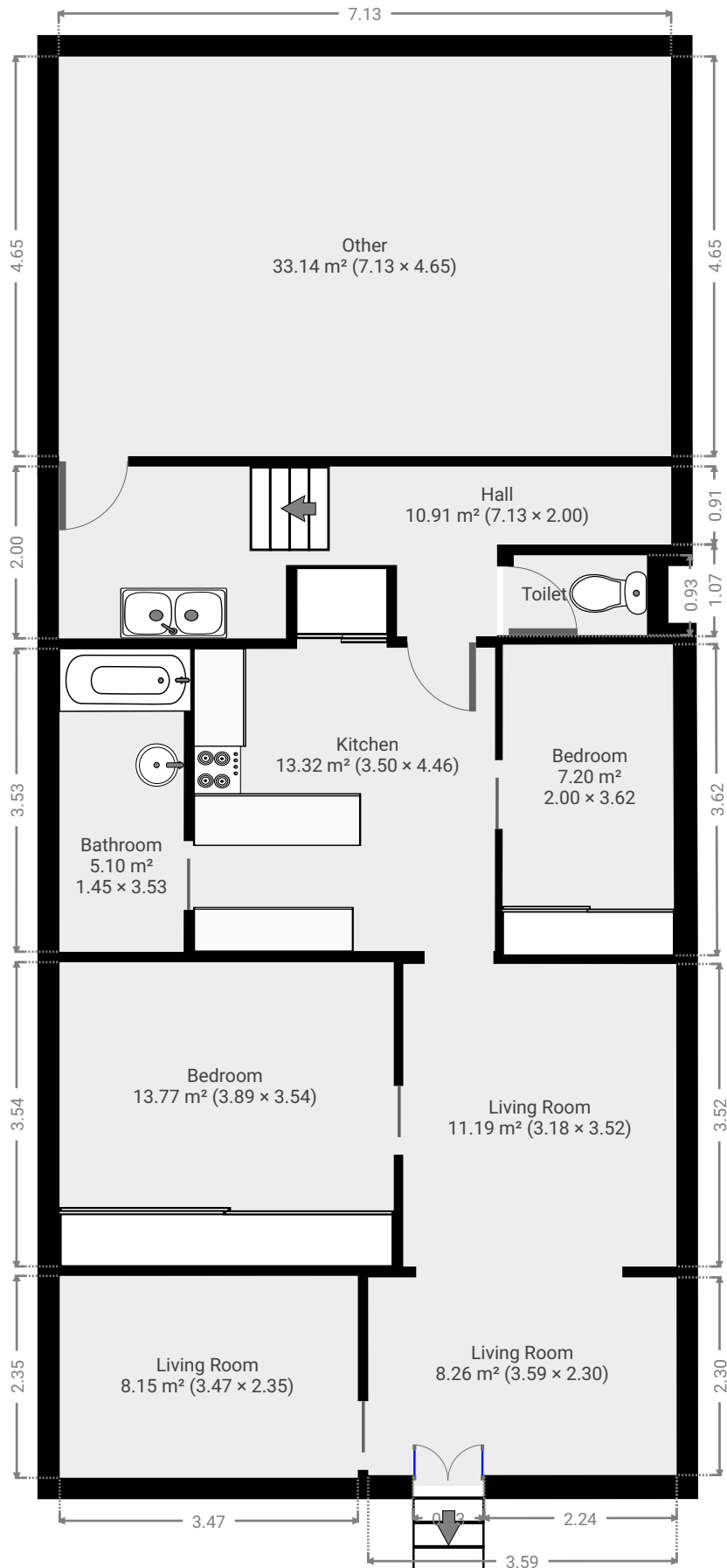
**CREATED ON**  
2022-01-31

---

<b>Floors</b> 1
--------------------

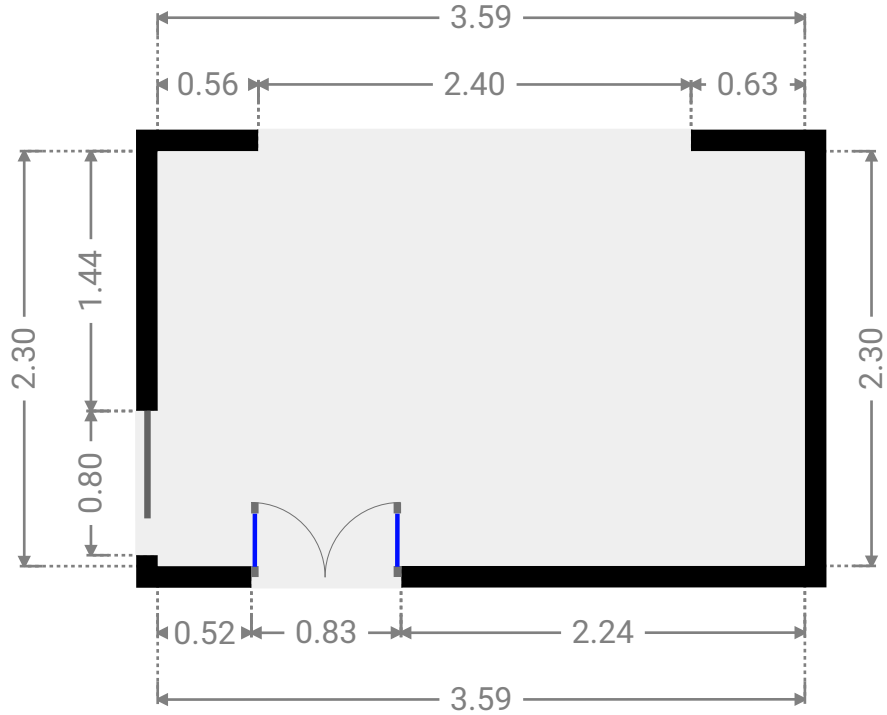
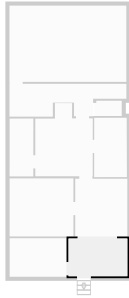
---

▼ Ground Floor



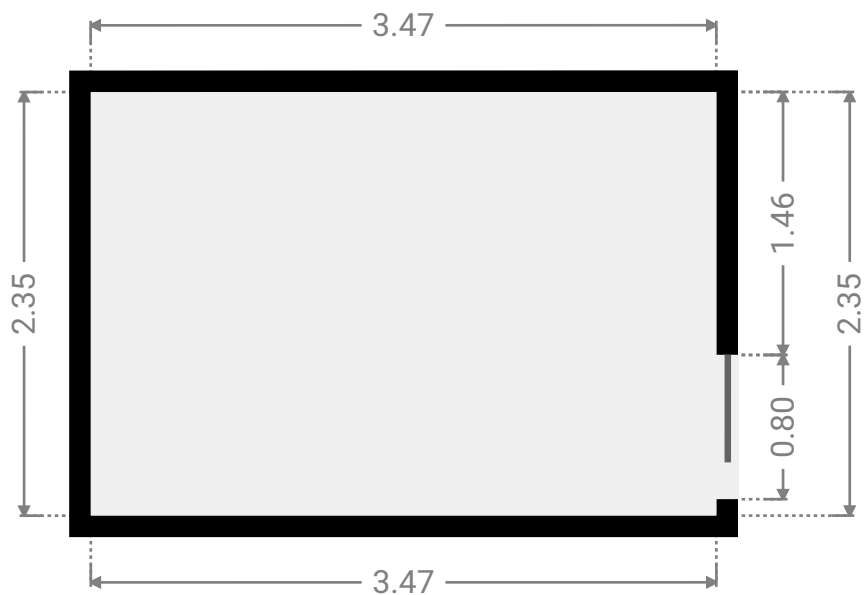
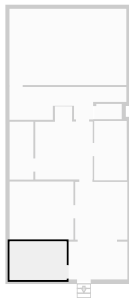
▼ **Living Room**  
Ground Floor

WIDTH: 3.59 m • LENGTH: 2.30 m  
AREA: 8.26 m<sup>2</sup> • PERIMETER: 11.78 m



▼ **Living Room**  
Ground Floor

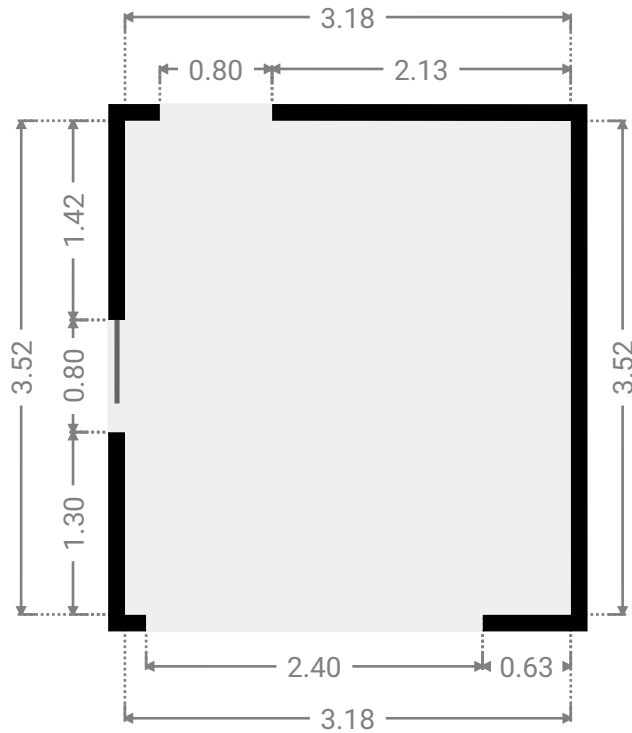
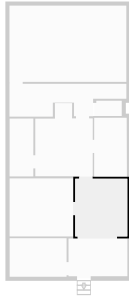
WIDTH: 3.47 m • LENGTH: 2.35 m  
AREA: 8.15 m<sup>2</sup> • PERIMETER: 11.64 m



FLOORS: 1

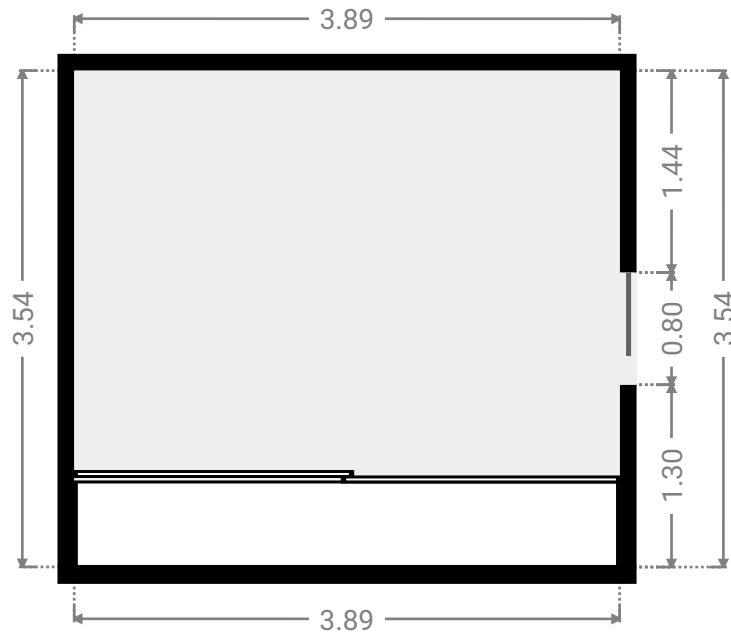
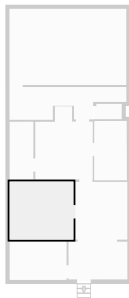
▼ **Living Room**  
Ground Floor

WIDTH: 3.18 m • LENGTH: 3.52 m  
AREA: 11.19 m<sup>2</sup> • PERIMETER: 13.40 m



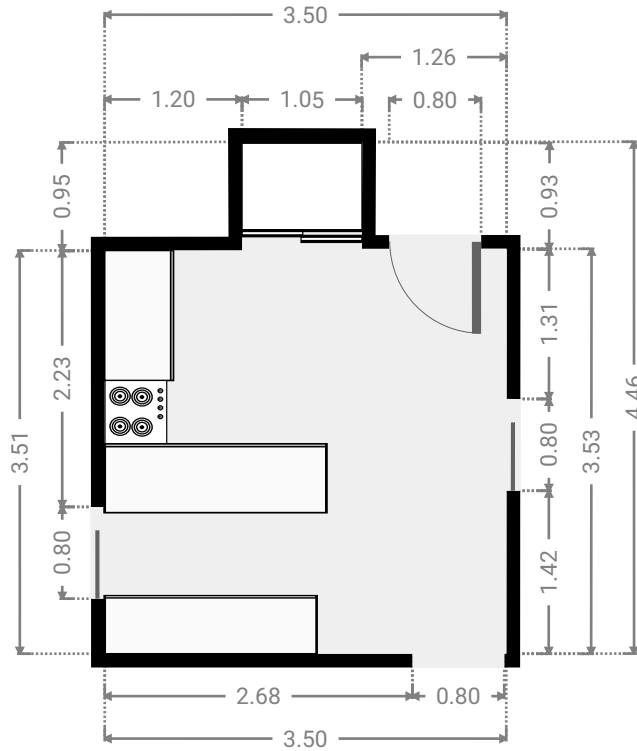
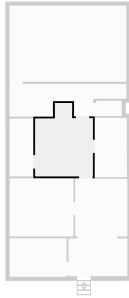
▼ **Bedroom**  
Ground Floor

WIDTH: 3.89 m • LENGTH: 3.54 m  
AREA: 13.77 m<sup>2</sup> • PERIMETER: 14.86 m



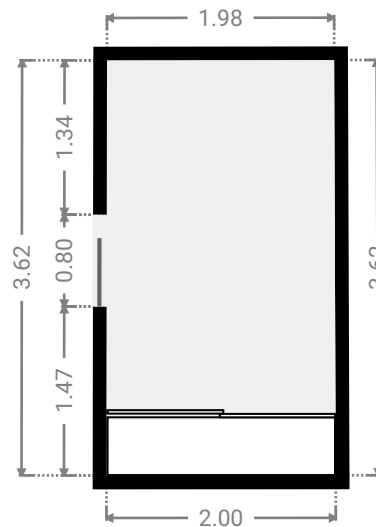
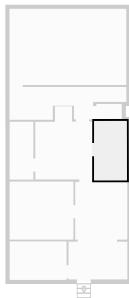
▼ **Kitchen**  
Ground Floor

WIDTH: 3.50 m • LENGTH: 4.46 m  
AREA: 13.32 m<sup>2</sup> • PERIMETER: 15.93 m



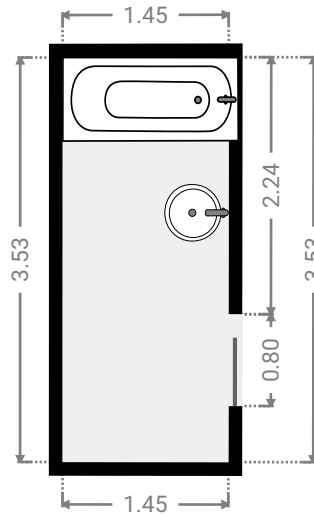
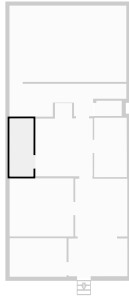
▼ **Bedroom**  
Ground Floor

WIDTH: 2.00 m • LENGTH: 3.62 m  
AREA: 7.20 m<sup>2</sup> • PERIMETER: 11.22 m



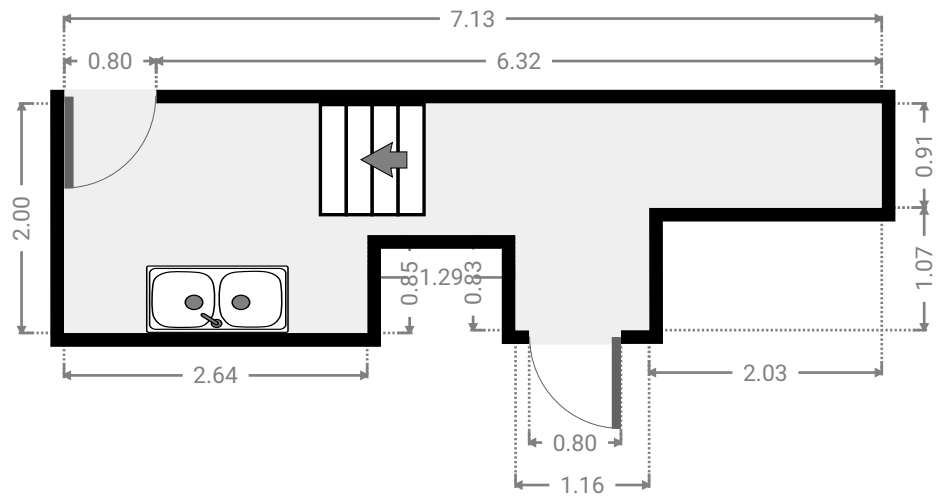
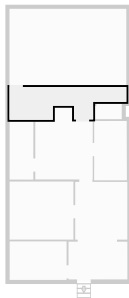
▼ **Bathroom**  
Ground Floor

WIDTH: 1.45 m • LENGTH: 3.53 m  
AREA: 5.10 m<sup>2</sup> • PERIMETER: 9.95 m



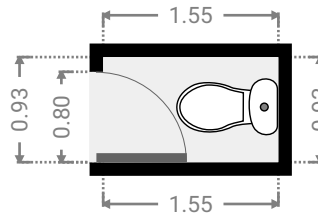
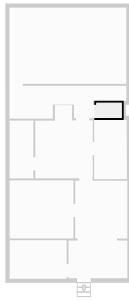
▼ **Hall**  
Ground Floor

WIDTH: 7.13 m • LENGTH: 2.00 m  
AREA: 10.91 m<sup>2</sup> • PERIMETER: 19.91 m



▼ **Toilet**  
Ground Floor

WIDTH: 1.55 m • LENGTH: 0.93 m  
AREA: 1.44 m<sup>2</sup> • PERIMETER: 4.96 m



▼ **Other**  
Ground Floor

WIDTH: 7.13 m • LENGTH: 4.65 m  
AREA: 33.14 m<sup>2</sup> • PERIMETER: 23.56 m

