

9 Sturt Court

SUBMITTED BY
Ray White Rockhampton Casey
stockers@cqoz.com

CREATED ON
2022-06-20

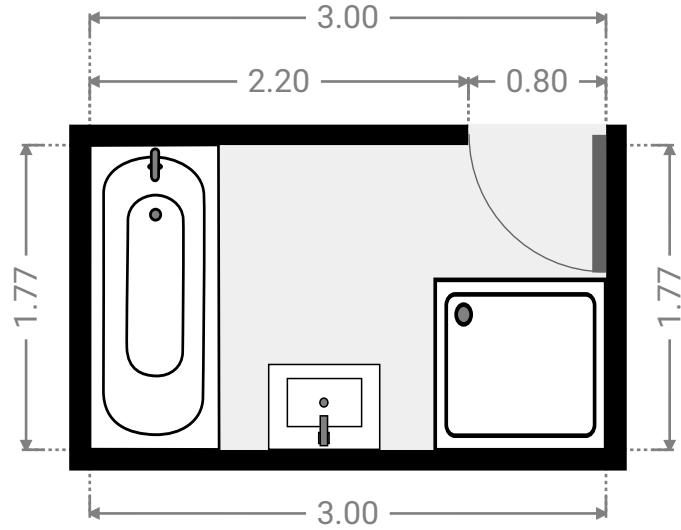
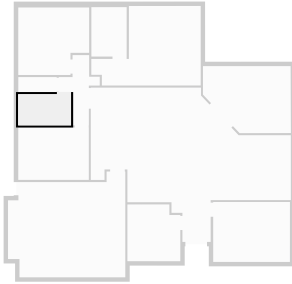
Floors
1

▼ Ground Floor



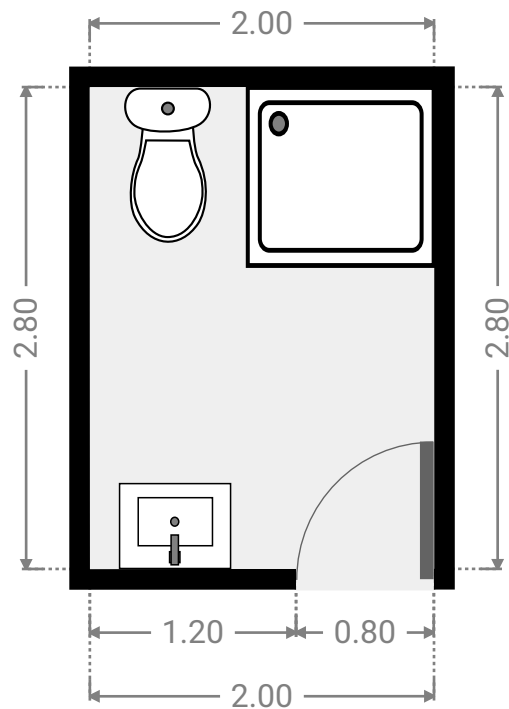
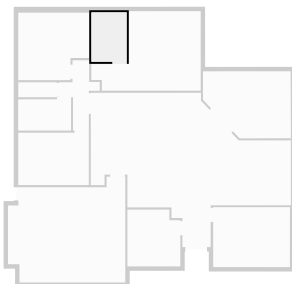
▼ Bathroom Ground Floor

WIDTH: 3.00 m • LENGTH: 1.77 m
AREA: 5.31 m² • PERIMETER: 9.54 m



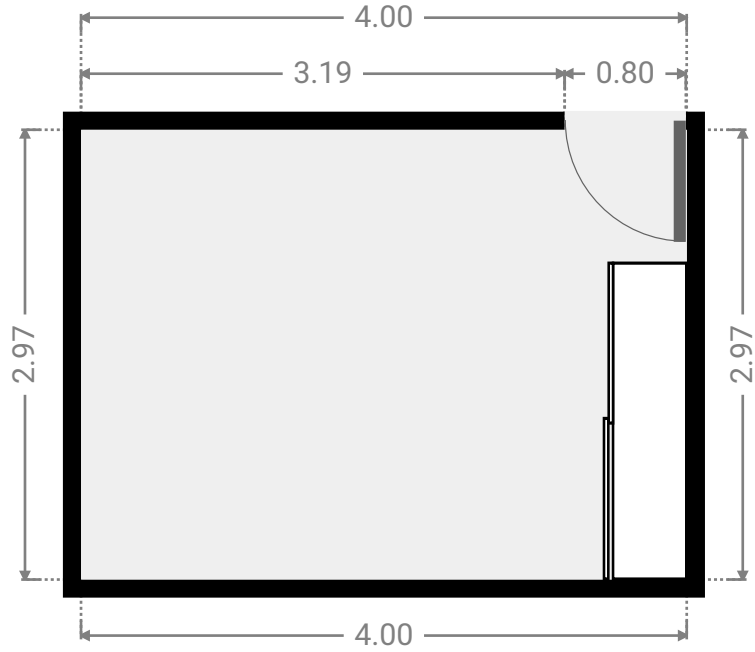
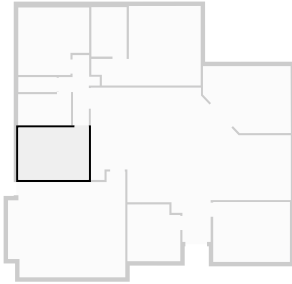
▼ Bathroom Ground Floor

WIDTH: 2.00 m • LENGTH: 2.80 m
AREA: 5.60 m² • PERIMETER: 9.60 m



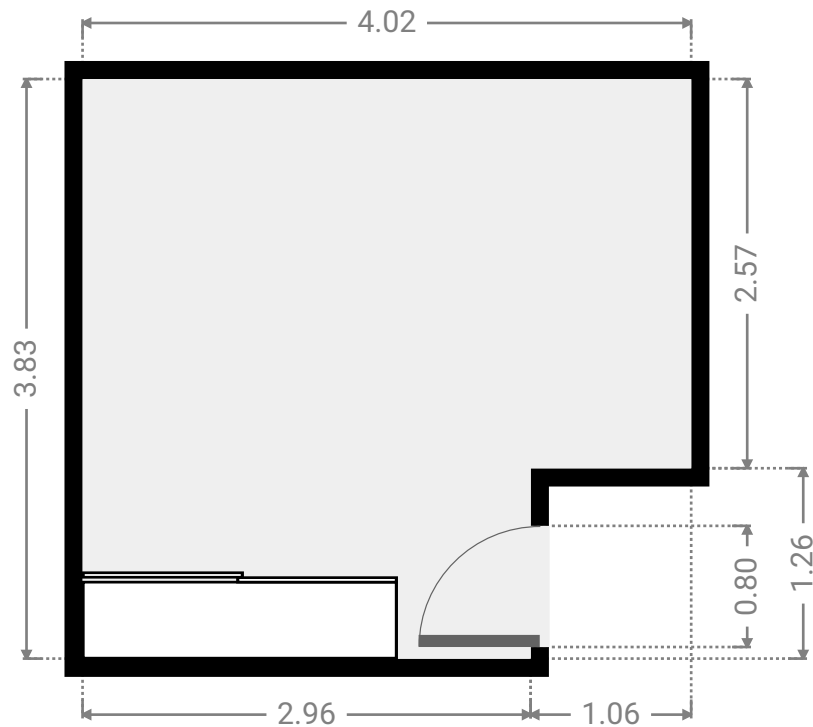
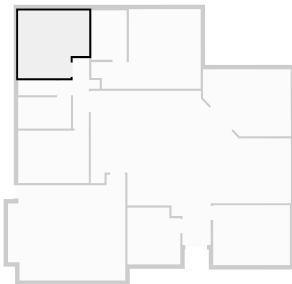
▼ **Bedroom**
Ground Floor

WIDTH: 4.00 m • LENGTH: 2.97 m
AREA: 11.88 m² • PERIMETER: 13.94 m



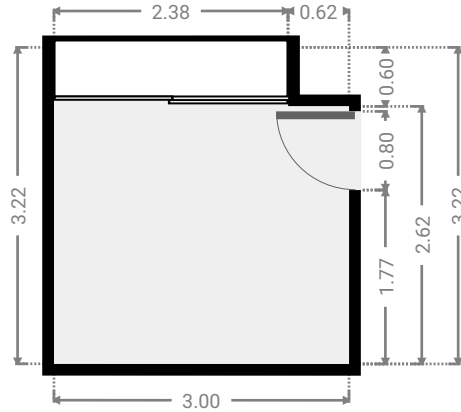
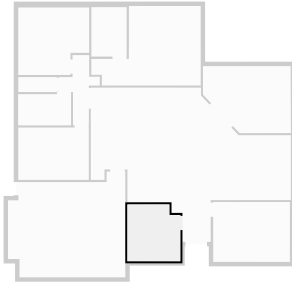
▼ **Bedroom**
Ground Floor

WIDTH: 4.02 m • LENGTH: 3.83 m
AREA: 14.05 m² • PERIMETER: 15.69 m



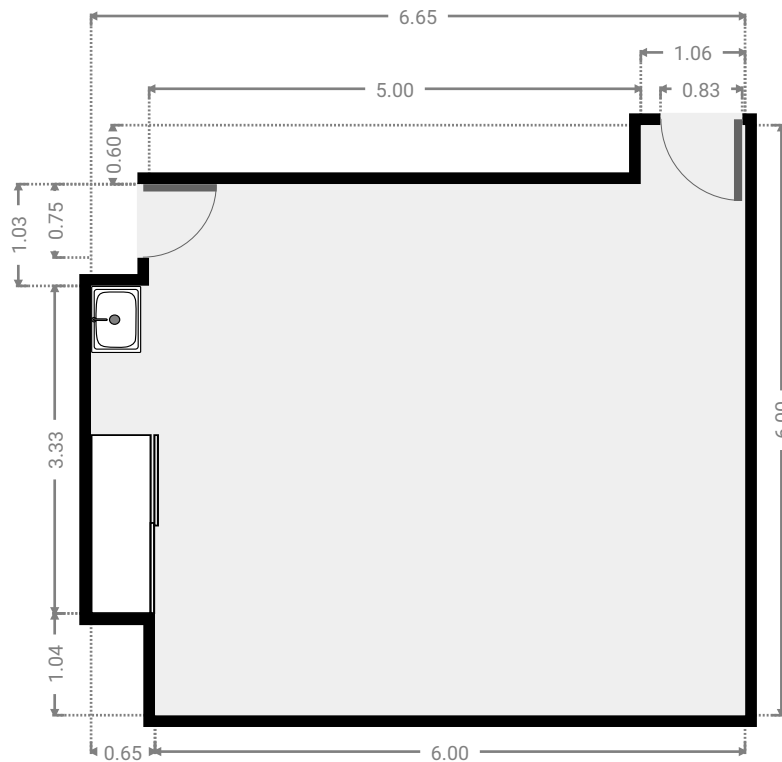
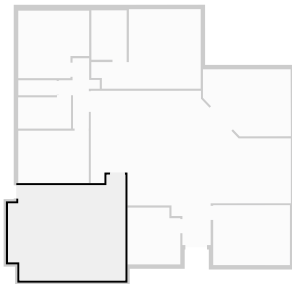
▼ Bedroom Ground Floor

WIDTH: 3.00 m • LENGTH: 3.22 m
AREA: 9.28 m² • PERIMETER: 12.44 m



▼ Garage Ground Floor

WIDTH: 6.65 m • LENGTH: 6.00 m
AREA: 35.26 m² • PERIMETER: 25.30 m



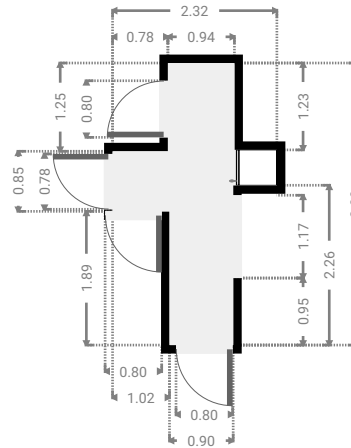
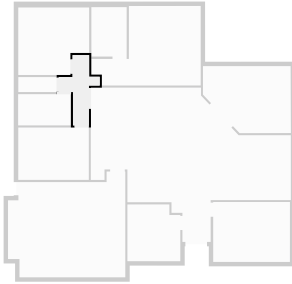
9 Sturt Court

FLOORS: 1



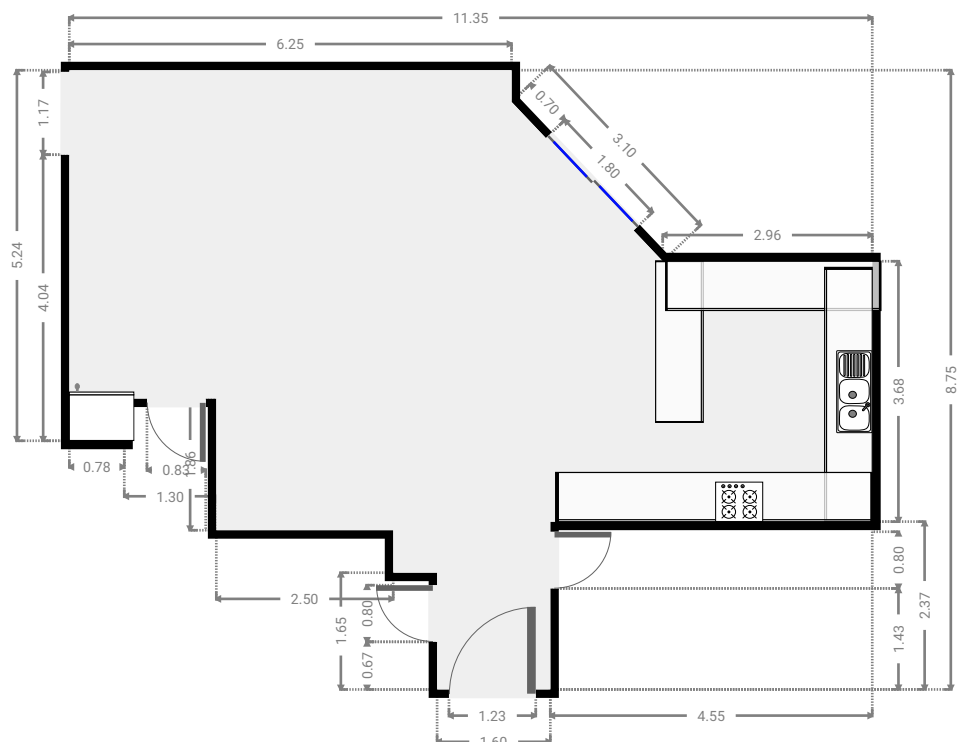
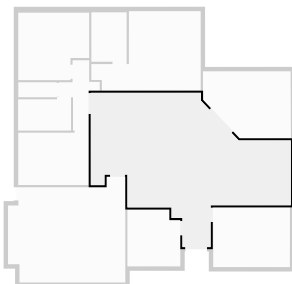
▼ Hall Ground Floor

WIDTH: 2.32 m • LENGTH: 3.99 m
AREA: 4.63 m² • PERIMETER: 12.62 m

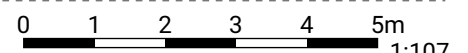


▼ Living Room Ground Floor

WIDTH: 11.35 m • LENGTH: 8.75 m
AREA: 62.43 m² • PERIMETER: 40.10 m

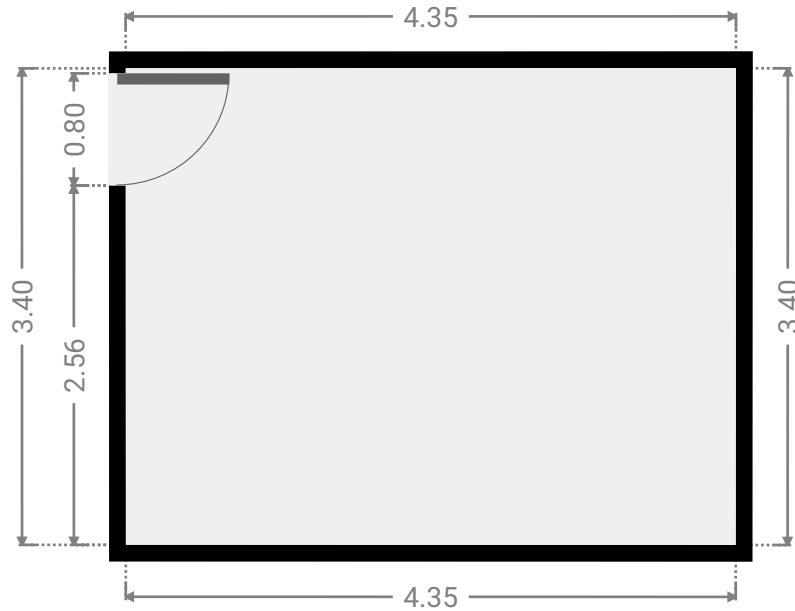
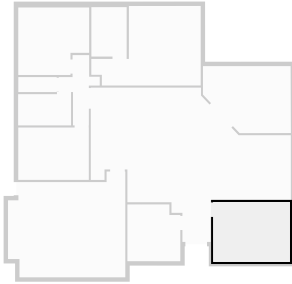


THIS FLOORPLAN IS PROVIDED WITHOUT WARRANTY OF ANY KIND. SENSOPIA DISCLAIMS ANY WARRANTY INCLUDING, WITHOUT LIMITATION, SATISFACTORY QUALITY OR ACCURACY OF DIMENSIONS.



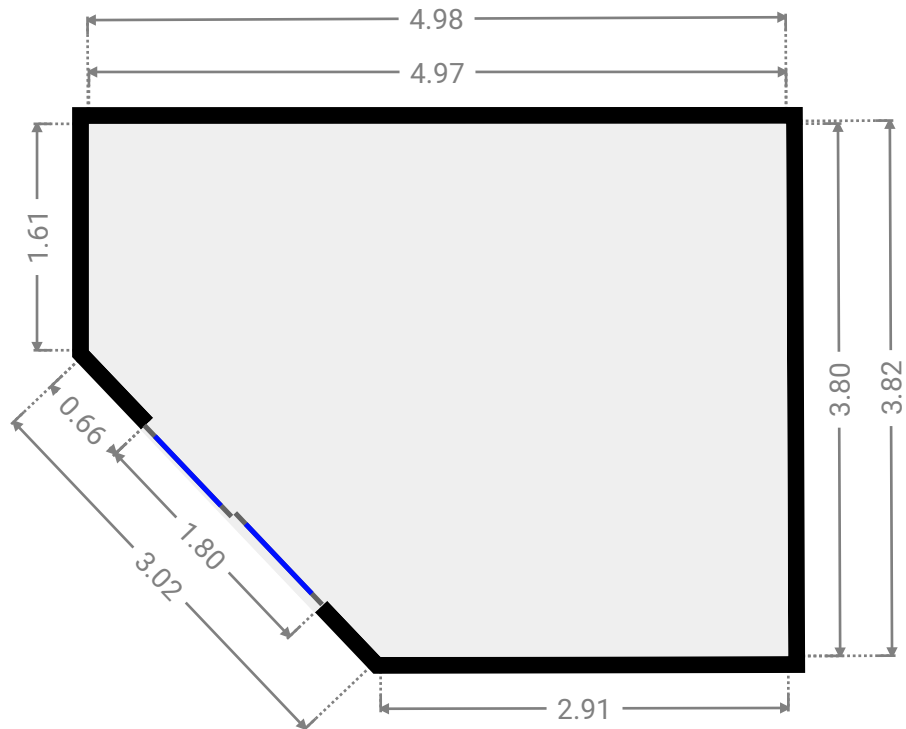
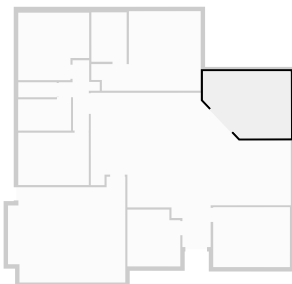
▼ **Living Room**
Ground Floor

WIDTH: 4.35 m • LENGTH: 3.40 m
AREA: 14.79 m² • PERIMETER: 15.50 m



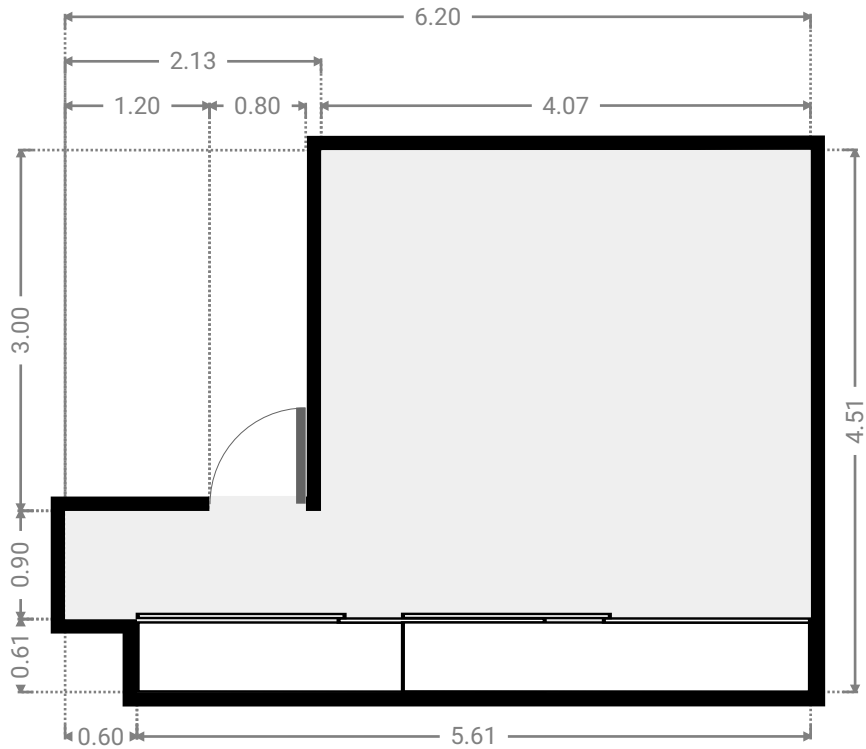
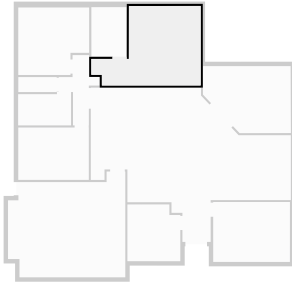
▼ **Other**
Ground Floor

WIDTH: 4.98 m • LENGTH: 3.82 m
AREA: 16.65 m² • PERIMETER: 16.31 m



▼ Primary Bedroom Ground Floor

WIDTH: 6.20 m • LENGTH: 4.51 m
AREA: 21.21 m² • PERIMETER: 21.42 m



▼ Toilet Ground Floor

WIDTH: 2.18 m • LENGTH: 0.85 m
AREA: 1.85 m² • PERIMETER: 6.05 m

