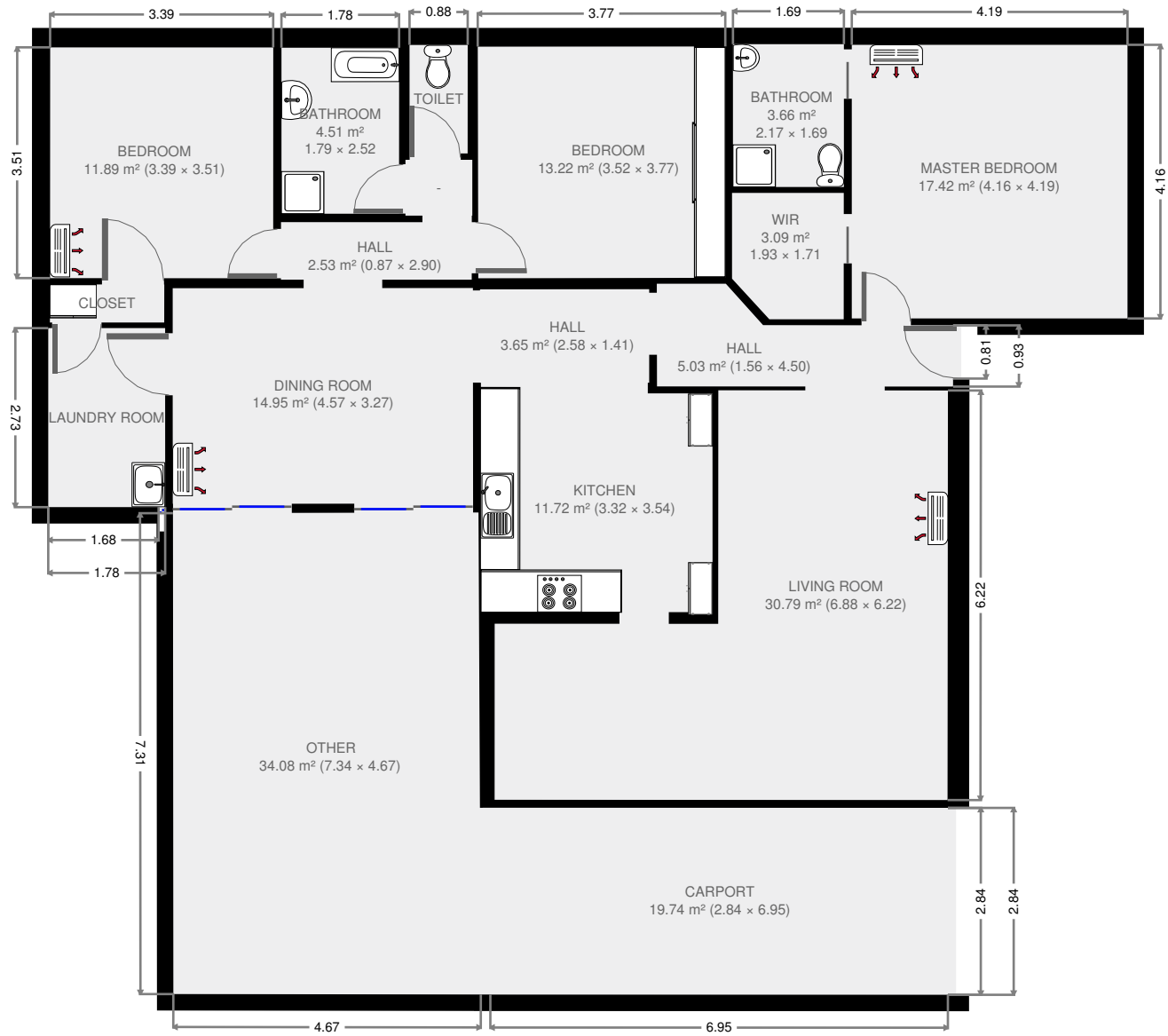


Ground Floor



Ray White Rockhampton
 Rockhampton.pm2@raywhite.com
 (07)4923 0000
 2016-10-31

165 m²

1 Floor

3 Bedrooms

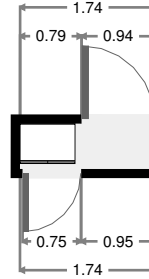
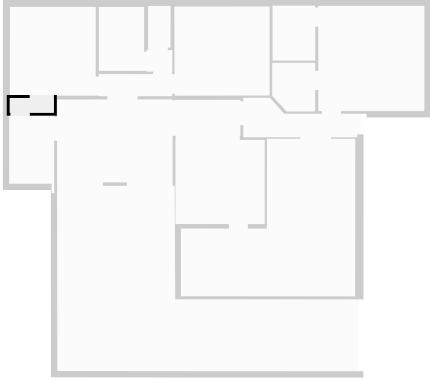
2 Bathrooms

THIS FLOORPLAN IS PROVIDED WITHOUT WARRANTY OF ANY KIND. RAY WHITE ROCKHAMPTON DISCLAIMS ANY WARRANTY INCLUDING, WITHOUT LIMITATION, SATISFACTORY QUALITY OR ACCURACY OF DIMENSIONS. ALL CARE IS TAKEN TO ENSURE ACCURACY BUT MEASUREMENTS, POSITIONING AND PLACEMENTS CANNOT BE GUARANTEED.



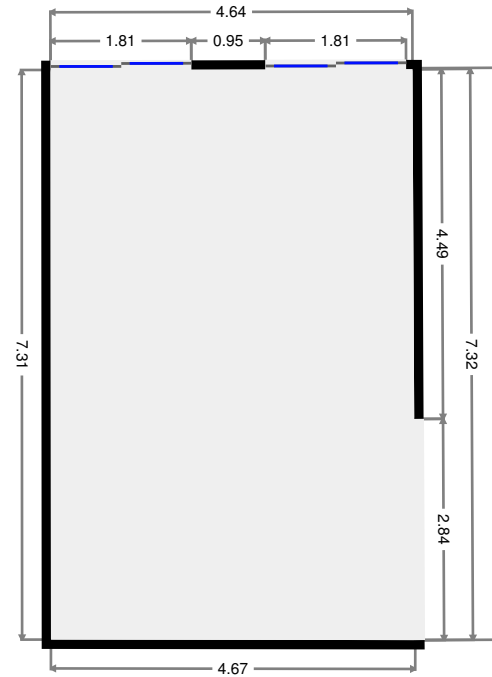
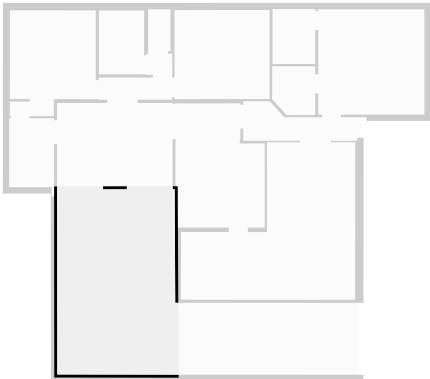
Closet

Width: 0.59 m
 Length: 1.74 m
 Area: 1.00 m²
 Perimeter: 4.63 m



Other

Width: 4.67 m
 Length: 7.34 m
 Area: 34.08 m²
 Perimeter: 23.95 m
 Ceiling Height: 2.17 m

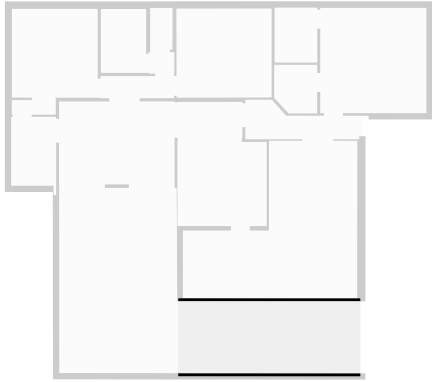


THIS FLOORPLAN IS PROVIDED WITHOUT WARRANTY OF ANY KIND. RAY WHITE ROCKHAMPTON DISCLAIMS ANY WARRANTY INCLUDING, WITHOUT LIMITATION, SATISFACTORY QUALITY OR ACCURACY OF DIMENSIONS. ALL CARE IS TAKEN TO ENSURE ACCURACY BUT MEASUREMENTS, POSITIONING AND PLACEMENTS CANNOT BE GUARANTEED.



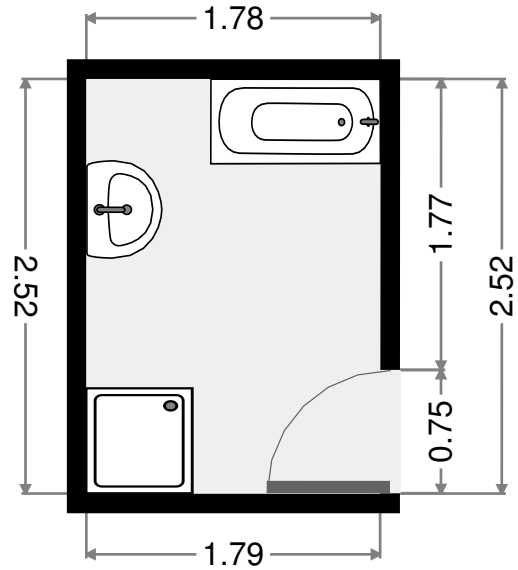
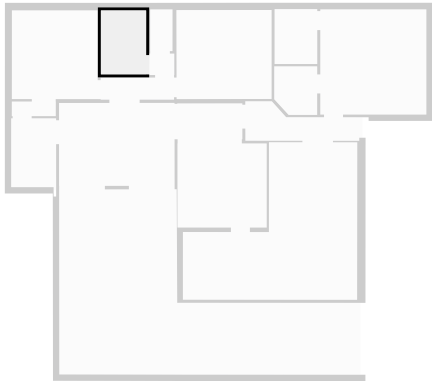
Carport

Width: 2.84 m
 Length: 6.95 m
 Area: 19.74 m²
 Perimeter: 19.58 m
 Ceiling Height: 2.17 m



Bathroom

Width: 1.79 m
 Length: 2.52 m
 Area: 4.51 m²
 Perimeter: 8.62 m

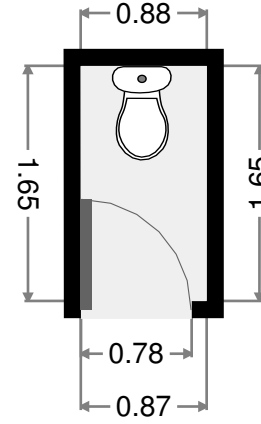
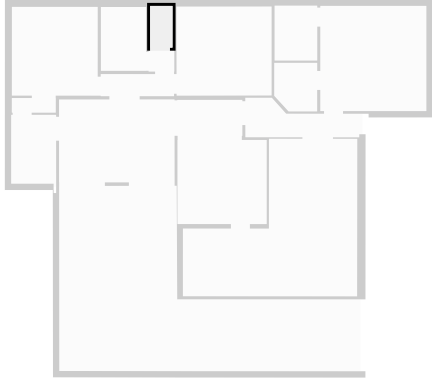


THIS FLOORPLAN IS PROVIDED WITHOUT WARRANTY OF ANY KIND. RAY WHITE ROCKHAMPTON DISCLAIMS ANY WARRANTY INCLUDING, WITHOUT LIMITATION, SATISFACTORY QUALITY OR ACCURACY OF DIMENSIONS. ALL CARE IS TAKEN TO ENSURE ACCURACY BUT MEASUREMENTS, POSITIONING AND PLACEMENTS CANNOT BE GUARANTEED.



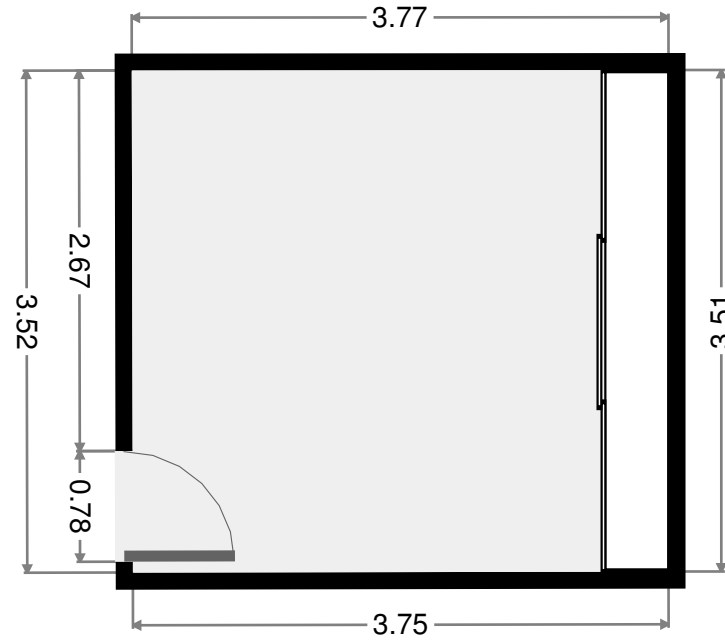
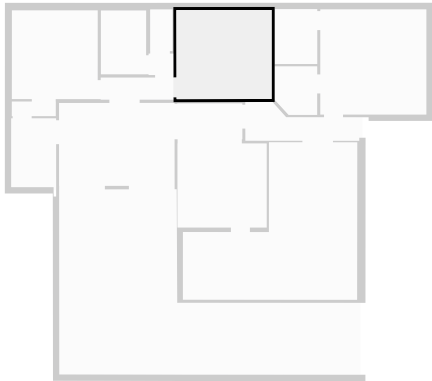
Toilet

Width: 0.87 m
Length: 1.65 m
Area: 1.46 m²
Perimeter: 5.06 m



Bedroom

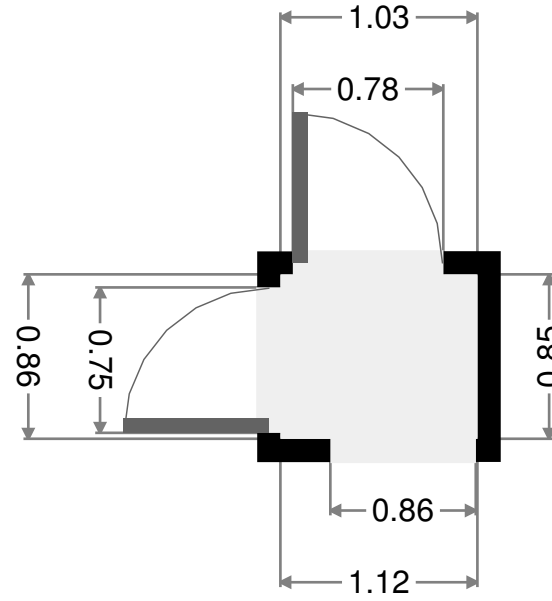
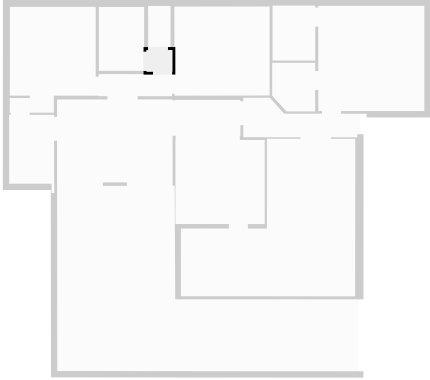
Width: 3.52 m
Length: 3.77 m
Area: 13.22 m²
Perimeter: 14.55 m



THIS FLOORPLAN IS PROVIDED WITHOUT WARRANTY OF ANY KIND. RAY WHITE ROCKHAMPTON DISCLAIMS ANY WARRANTY INCLUDING, WITHOUT LIMITATION, SATISFACTORY QUALITY OR ACCURACY OF DIMENSIONS. ALL CARE IS TAKEN TO ENSURE ACCURACY BUT MEASUREMENTS, POSITIONING AND PLACEMENTS CANNOT BE GUARANTEED.

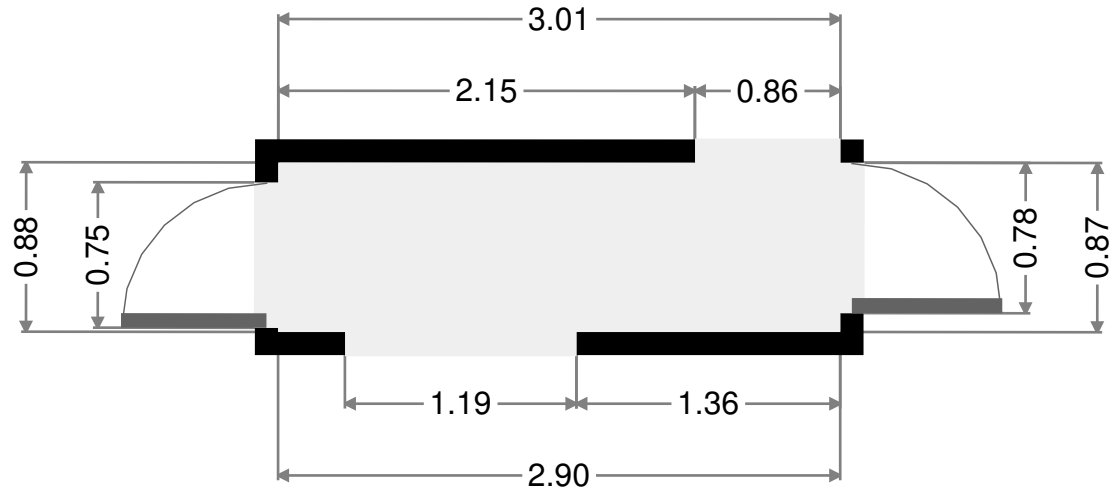
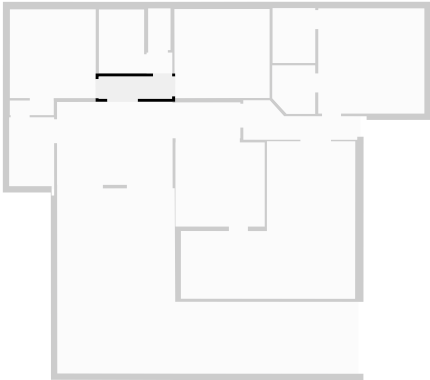


Width: 0.85 m
 Length: 1.02 m
 Area: 0.86 m²
 Perimeter: 3.73 m



Hall

Width: 0.87 m
 Length: 2.90 m
 Area: 2.53 m²
 Perimeter: 7.55 m

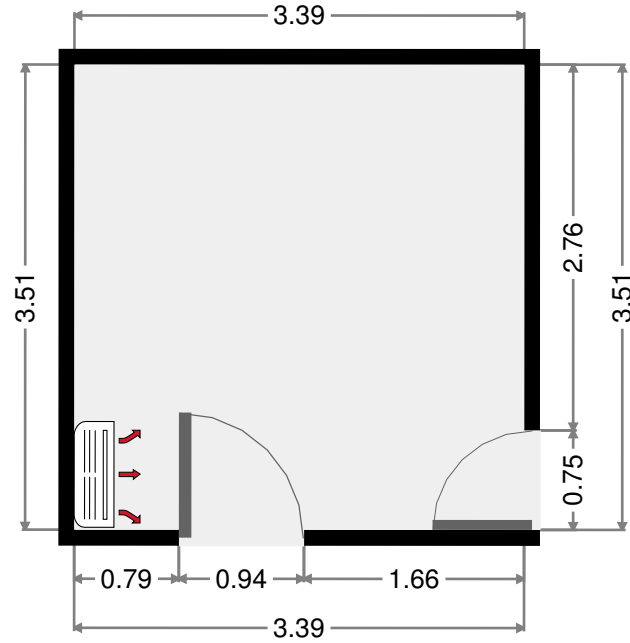
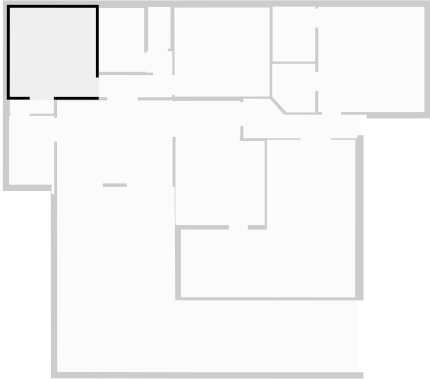


THIS FLOORPLAN IS PROVIDED WITHOUT WARRANTY OF ANY KIND. RAY WHITE ROCKHAMPTON DISCLAIMS ANY WARRANTY INCLUDING, WITHOUT LIMITATION, SATISFACTORY QUALITY OR ACCURACY OF DIMENSIONS. ALL CARE IS TAKEN TO ENSURE ACCURACY BUT MEASUREMENTS, POSITIONING AND PLACEMENTS CANNOT BE GUARANTEED.



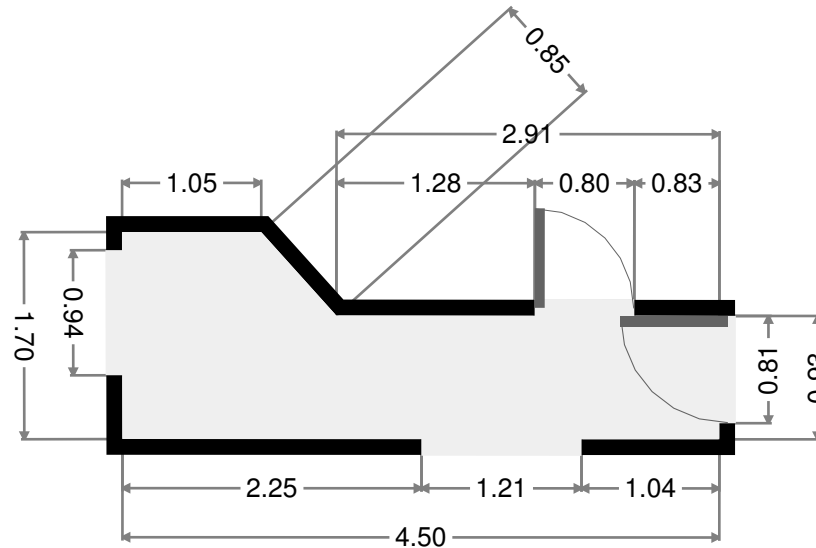
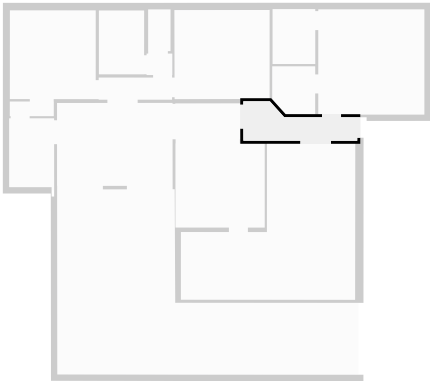
Bedroom

Width: 3.39 m
 Length: 3.51 m
 Area: 11.89 m²
 Perimeter: 13.79 m



Hall

Width: 1.56 m
 Length: 4.50 m
 Area: 5.03 m²
 Perimeter: 11.77 m
 Ceiling Height: 2.17 m

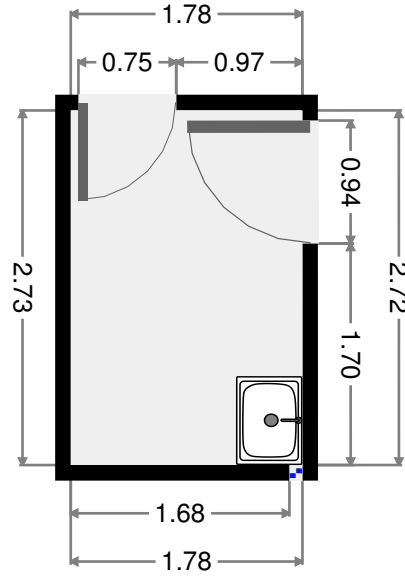
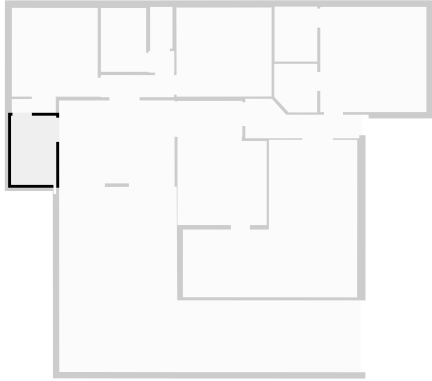


THIS FLOORPLAN IS PROVIDED WITHOUT WARRANTY OF ANY KIND. RAY WHITE ROCKHAMPTON DISCLAIMS ANY WARRANTY INCLUDING, WITHOUT LIMITATION, SATISFACTORY QUALITY OR ACCURACY OF DIMENSIONS. ALL CARE IS TAKEN TO ENSURE ACCURACY BUT MEASUREMENTS, POSITIONING AND PLACEMENTS CANNOT BE GUARANTEED.



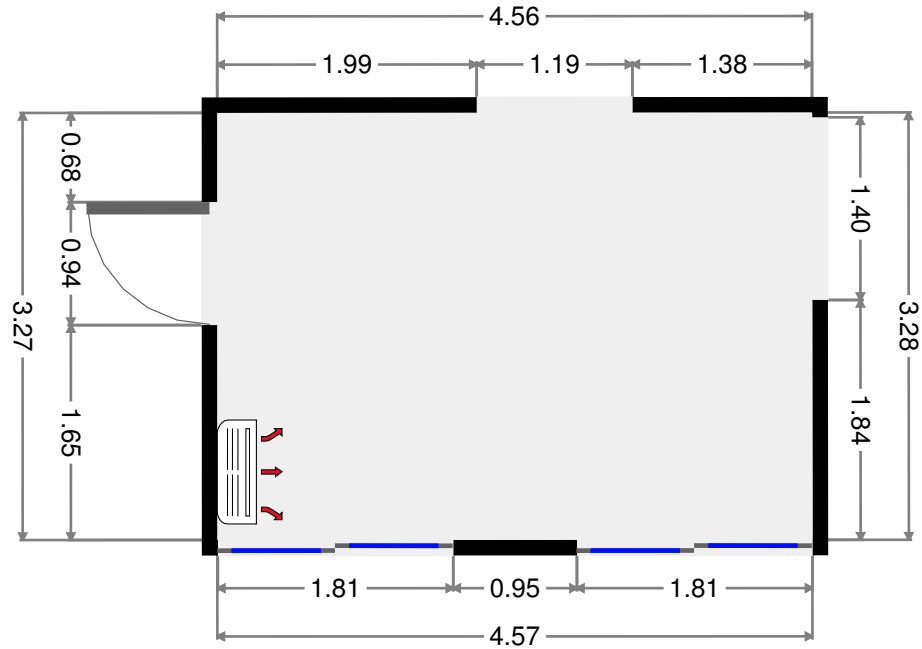
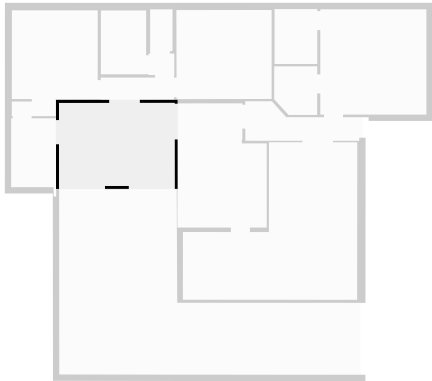
Laundry Room

Width: 1.78 m
 Length: 2.72 m
 Area: 4.83 m²
 Perimeter: 8.99 m

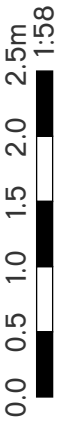


Dining Room

Width: 3.27 m
 Length: 4.57 m
 Area: 14.95 m²
 Perimeter: 15.68 m

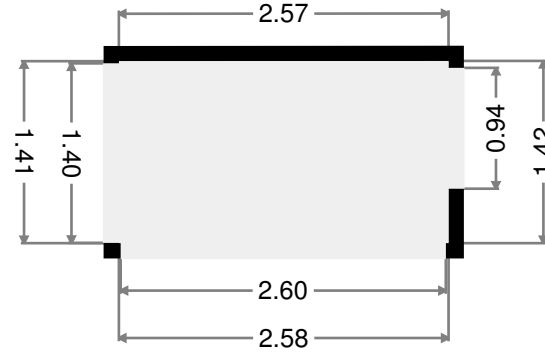
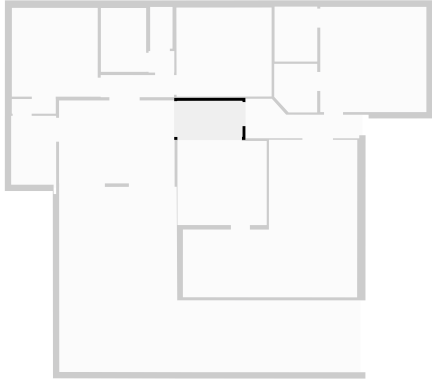


THIS FLOORPLAN IS PROVIDED WITHOUT WARRANTY OF ANY KIND. RAY WHITE ROCKHAMPTON DISCLAIMS ANY WARRANTY INCLUDING, WITHOUT LIMITATION, SATISFACTORY QUALITY OR ACCURACY OF DIMENSIONS. ALL CARE IS TAKEN TO ENSURE ACCURACY BUT MEASUREMENTS, POSITIONING AND PLACEMENTS CANNOT BE GUARANTEED.



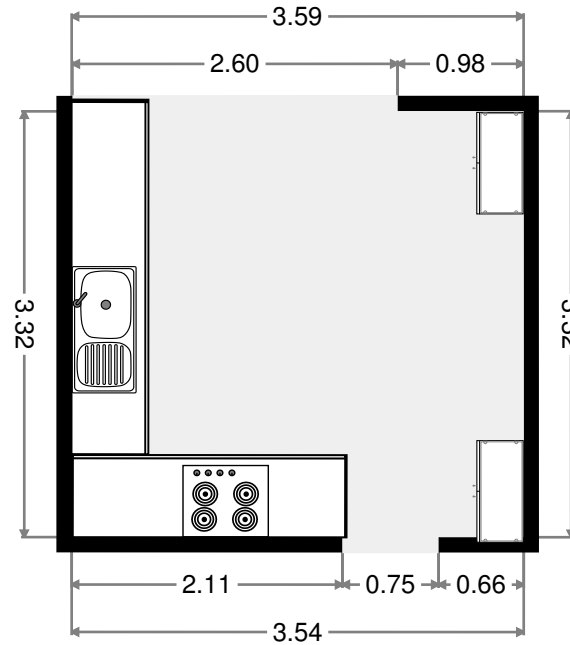
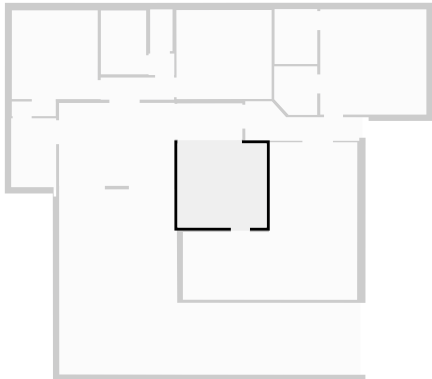
Hall

Width: 1.41 m
 Length: 2.58 m
 Area: 3.65 m²
 Perimeter: 7.99 m



Kitchen

Width: 3.32 m
 Length: 3.54 m
 Area: 11.72 m²
 Perimeter: 13.70 m

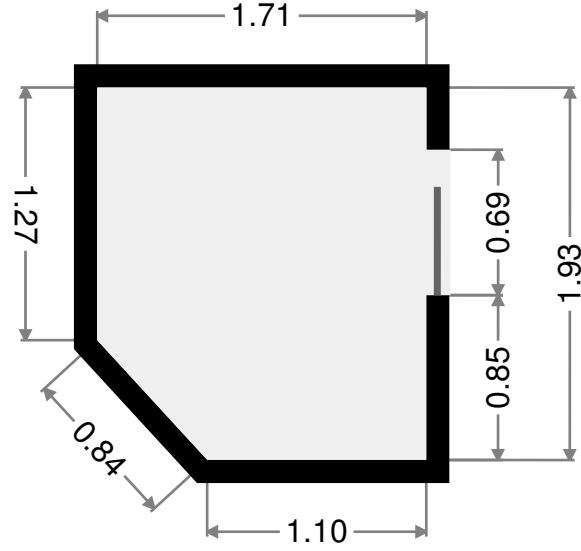
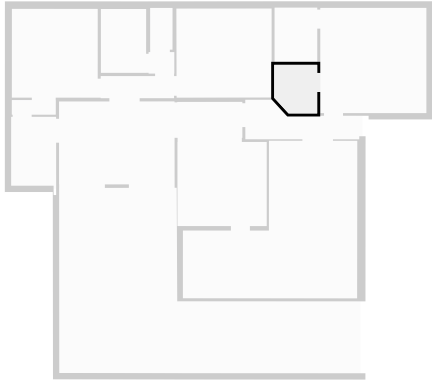


THIS FLOORPLAN IS PROVIDED WITHOUT WARRANTY OF ANY KIND. RAY WHITE ROCKHAMPTON DISCLAIMS ANY WARRANTY INCLUDING, WITHOUT LIMITATION, SATISFACTORY QUALITY OR ACCURACY OF DIMENSIONS. ALL CARE IS TAKEN TO ENSURE ACCURACY BUT MEASUREMENTS, POSITIONING AND PLACEMENTS CANNOT BE GUARANTEED.



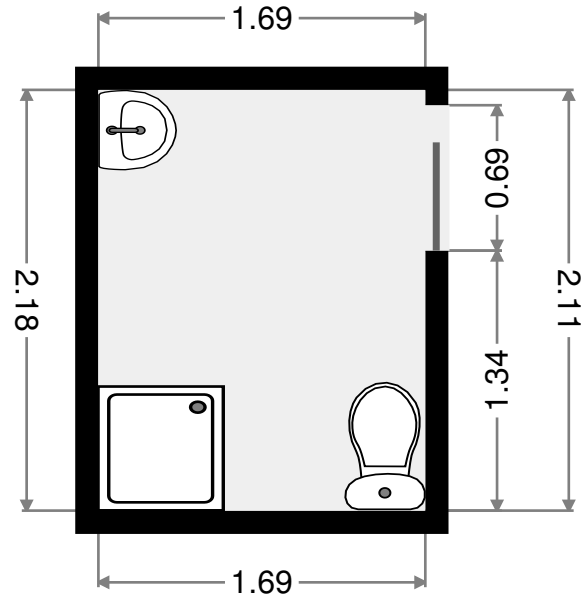
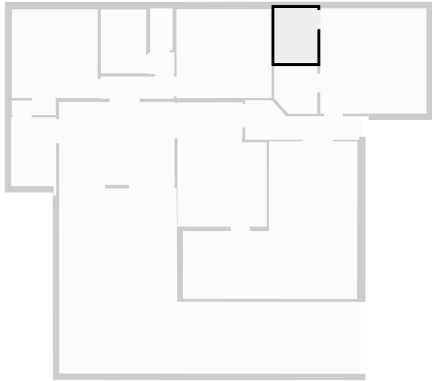
WIR

Width: 1.71 m
 Length: 1.93 m
 Area: 3.09 m²
 Perimeter: 6.89 m
 Ceiling Height: 2.17 m



Bathroom

Width: 1.69 m
 Length: 2.17 m
 Area: 3.66 m²
 Perimeter: 7.71 m

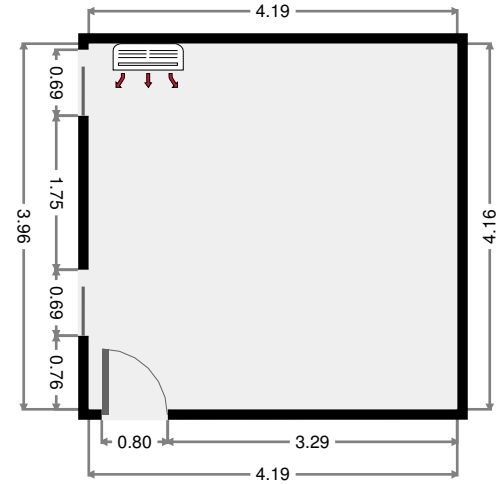
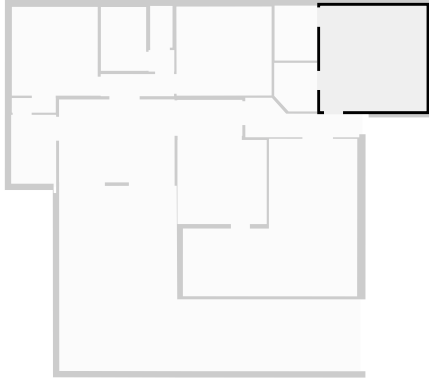


THIS FLOORPLAN IS PROVIDED WITHOUT WARRANTY OF ANY KIND. RAY WHITE ROCKHAMPTON DISCLAIMS ANY WARRANTY INCLUDING, WITHOUT LIMITATION, SATISFACTORY QUALITY OR ACCURACY OF DIMENSIONS. ALL CARE IS TAKEN TO ENSURE ACCURACY BUT MEASUREMENTS, POSITIONING AND PLACEMENTS CANNOT BE GUARANTEED.



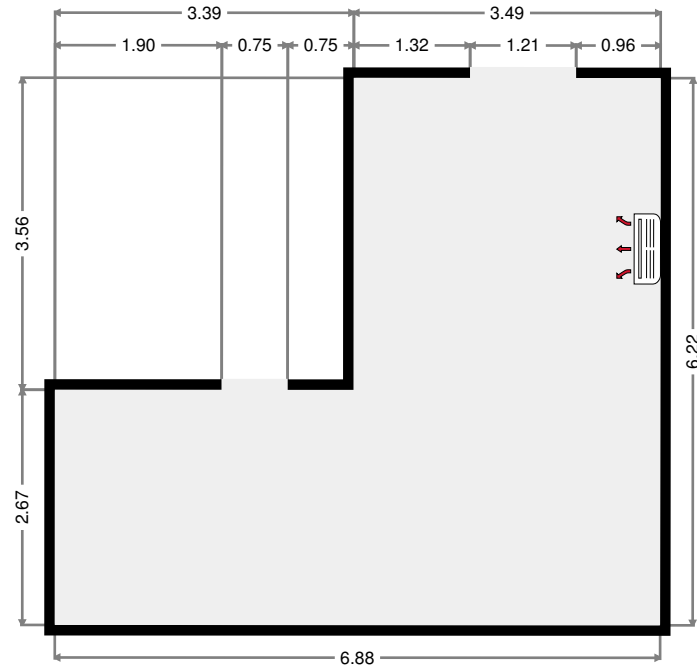
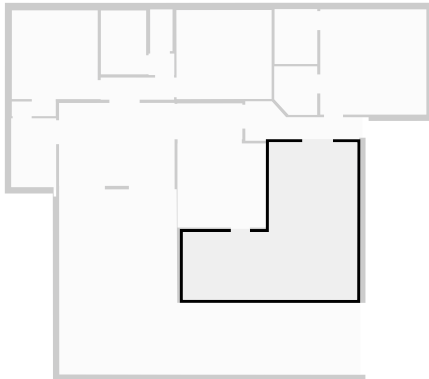
Master Bedroom

Width: 4.16 m
 Length: 4.19 m
 Area: 17.42 m²
 Perimeter: 16.70 m



Living Room

Width: 6.22 m
 Length: 6.88 m
 Area: 30.79 m²
 Perimeter: 26.22 m
 Ceiling Height: 2.17 m



THIS FLOORPLAN IS PROVIDED WITHOUT WARRANTY OF ANY KIND. RAY WHITE ROCKHAMPTON DISCLAIMS ANY WARRANTY INCLUDING, WITHOUT LIMITATION, SATISFACTORY QUALITY OR ACCURACY OF DIMENSIONS. ALL CARE IS TAKEN TO ENSURE ACCURACY BUT MEASUREMENTS, POSITIONING AND PLACEMENTS CANNOT BE GUARANTEED.

