

9 Rowe Street, Norman Gardens

SUBMITTED BY

Ray White Rockhampton Casey
stockers@cqoz.com

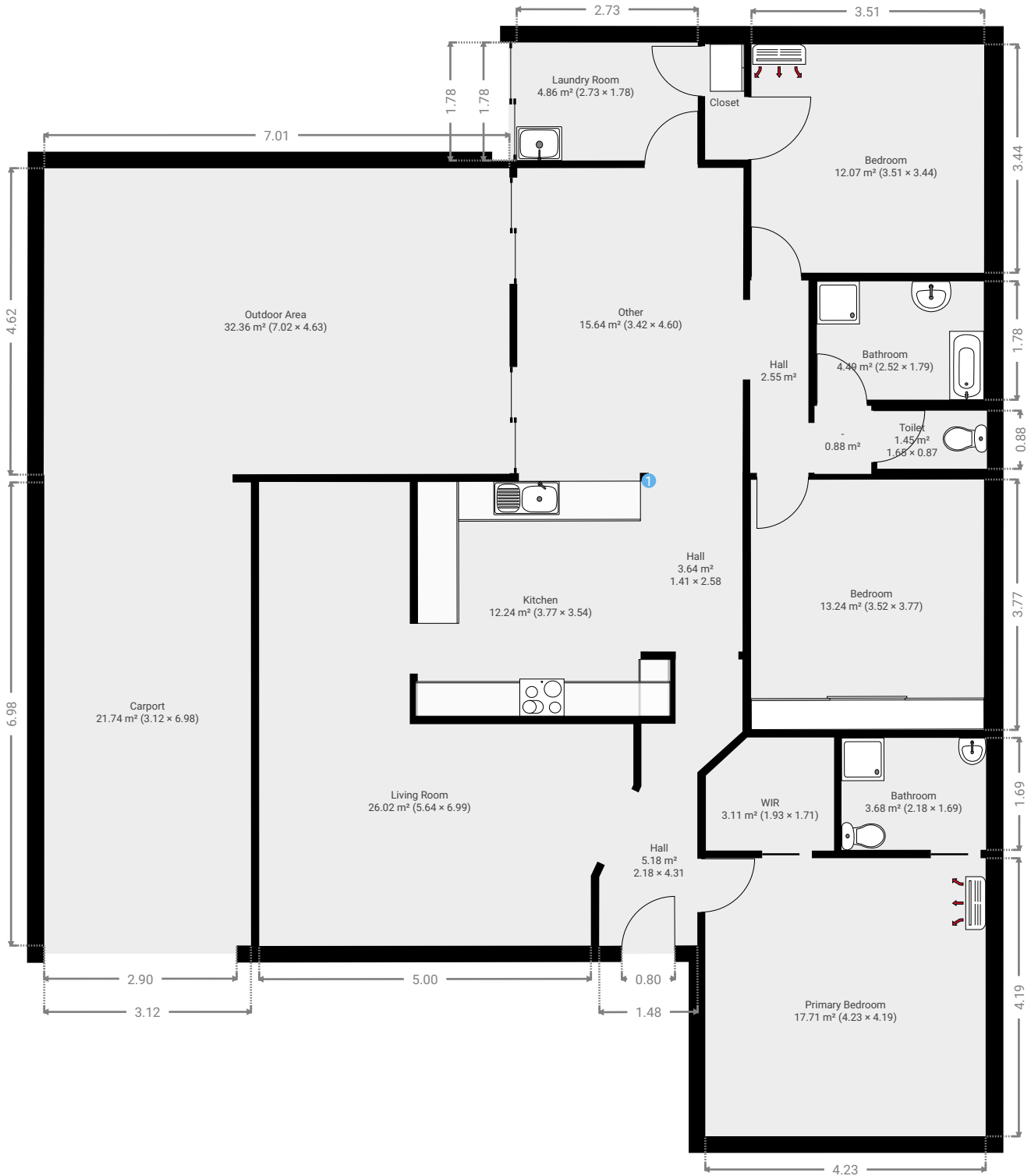
CREATED ON

2016-10-31

Floors

1

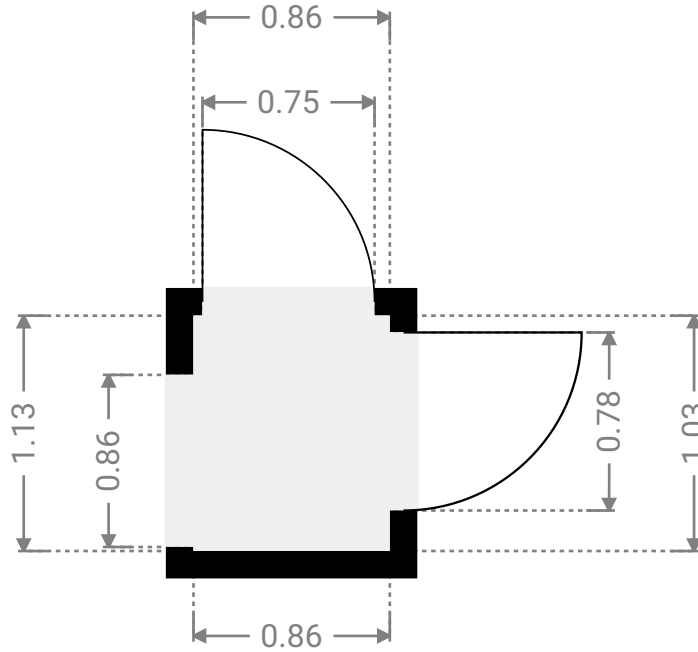
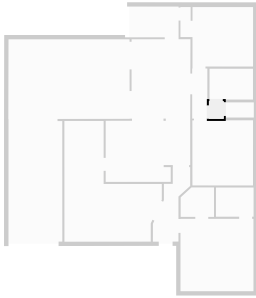
▼ Ground Floor



FLOORS: 1

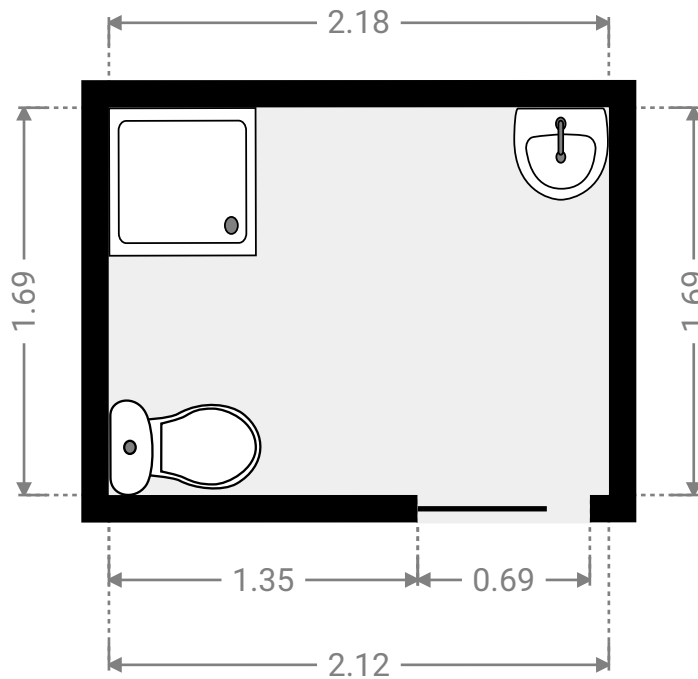
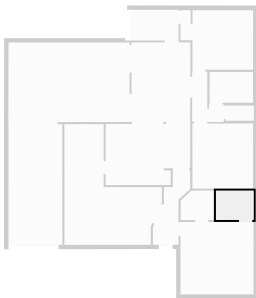
▼ -
Ground Floor

WIDTH: 0.86 m • LENGTH: 1.03 m
AREA: 0.88 m² • PERIMETER: 3.76 m



▼ Bathroom
Ground Floor

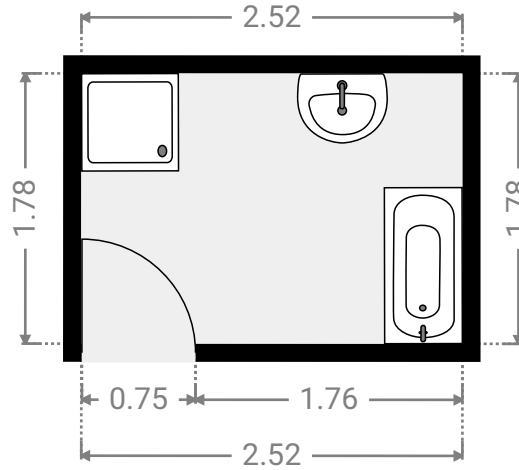
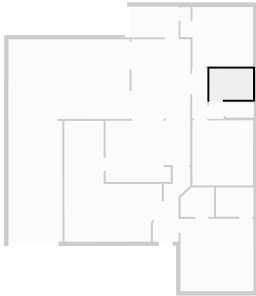
WIDTH: 2.18 m • LENGTH: 1.69 m
AREA: 3.68 m² • PERIMETER: 7.73 m



FLOORS: 1

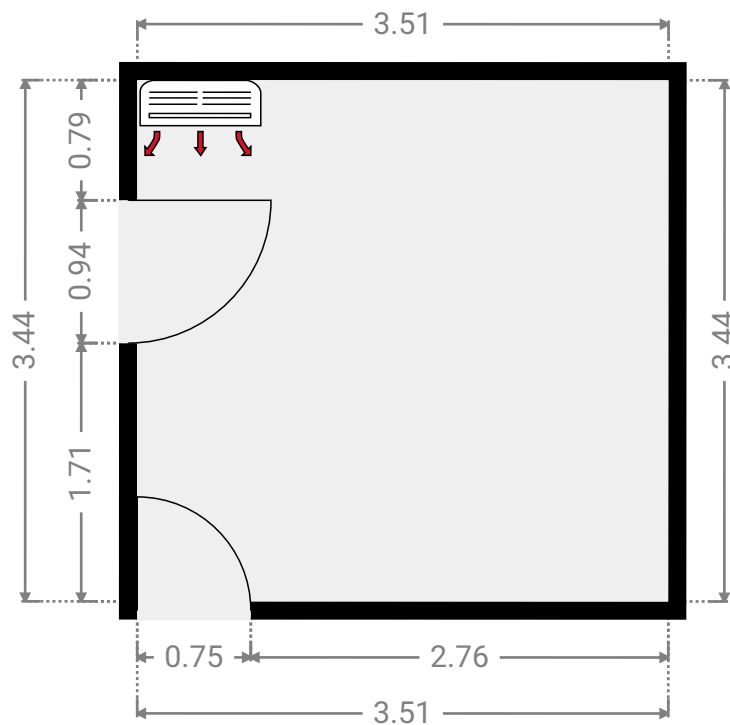
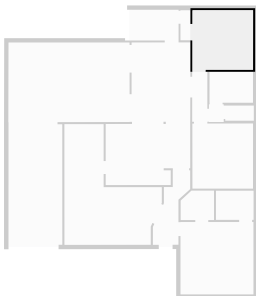
▼ **Bathroom**
Ground Floor

WIDTH: 2.52 m • LENGTH: 1.79 m
AREA: 4.49 m² • PERIMETER: 8.60 m



▼ **Bedroom**
Ground Floor

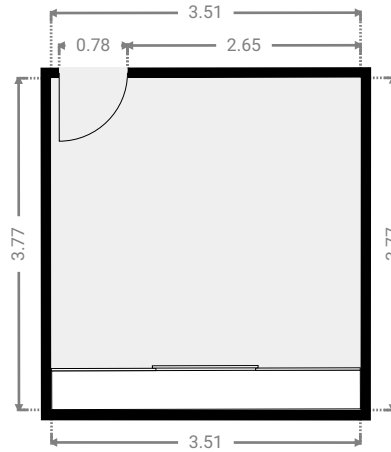
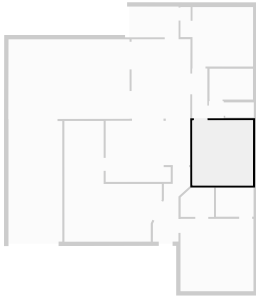
WIDTH: 3.51 m • LENGTH: 3.44 m
AREA: 12.07 m² • PERIMETER: 13.90 m



FLOORS: 1

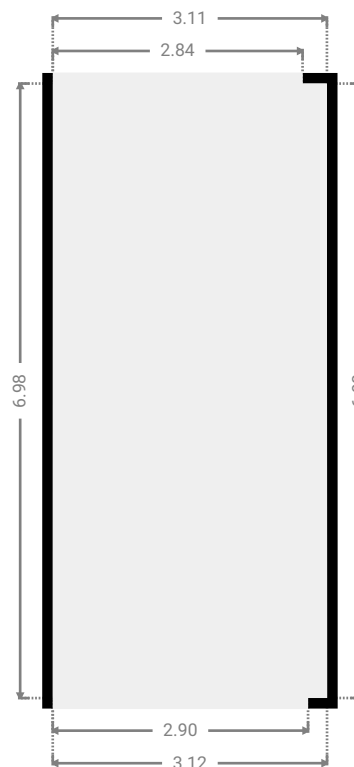
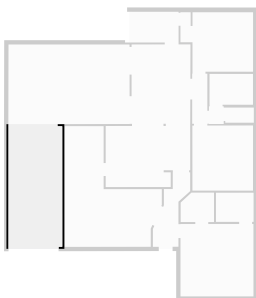
▼ **Bedroom**
Ground Floor

WIDTH: 3.52 m • LENGTH: 3.77 m
AREA: 13.24 m² • PERIMETER: 14.56 m



▼ **Carport**
Ground Floor

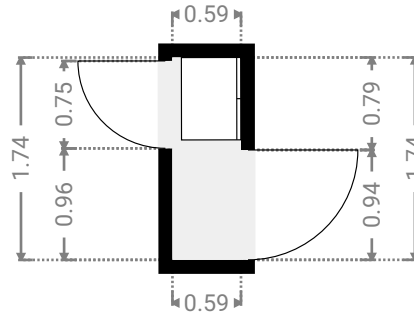
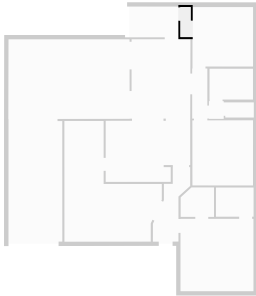
WIDTH: 3.12 m • LENGTH: 6.98 m • CEILING HEIGHT: 2.17 m
AREA: 21.74 m² • PERIMETER: 20.19 m



FLOORS: 1

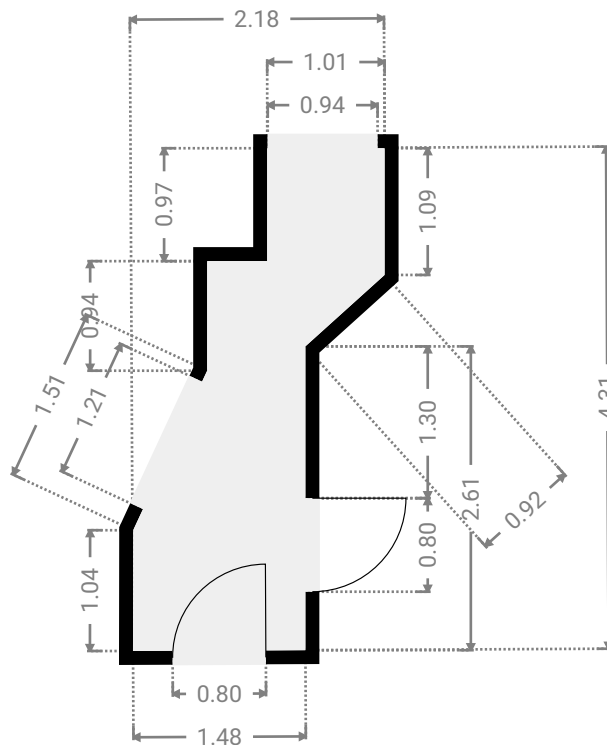
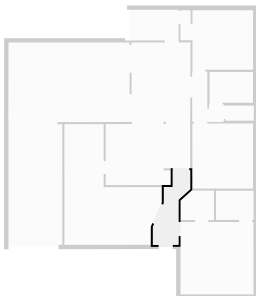
▼ **Closet**
Ground Floor

WIDTH: 0.59 m • LENGTH: 1.74 m
AREA: 1.02 m² • PERIMETER: 4.65 m



▼ **Hall**
Ground Floor

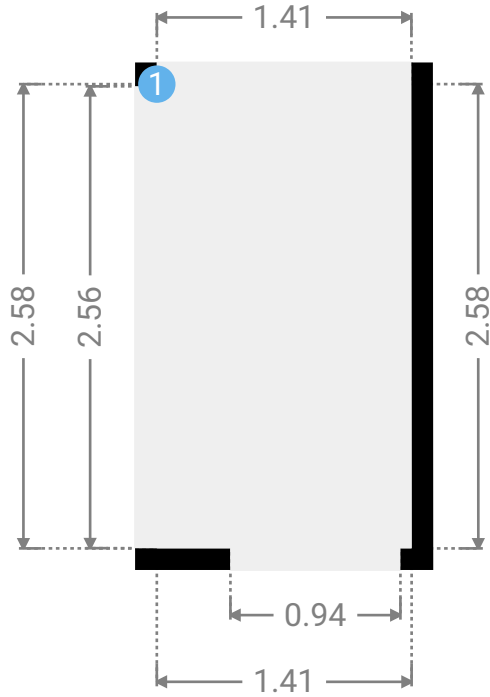
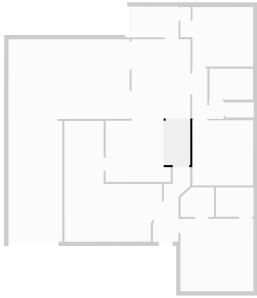
WIDTH: 2.18 m • LENGTH: 4.31 m • CEILING HEIGHT: 2.17 m
AREA: 5.18 m² • PERIMETER: 12.07 m



FLOORS: 1

▼ **Hall**
Ground Floor

WIDTH: 1.41 m • LENGTH: 2.58 m
AREA: 3.64 m² • PERIMETER: 7.98 m



▼ **Hall/Ground Floor**

1 **OPENING**

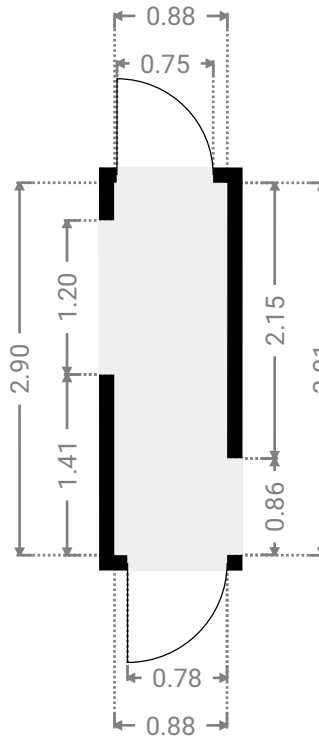
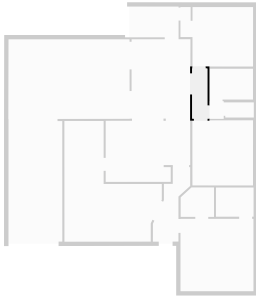
Height
0.00 m



FLOORS: 1

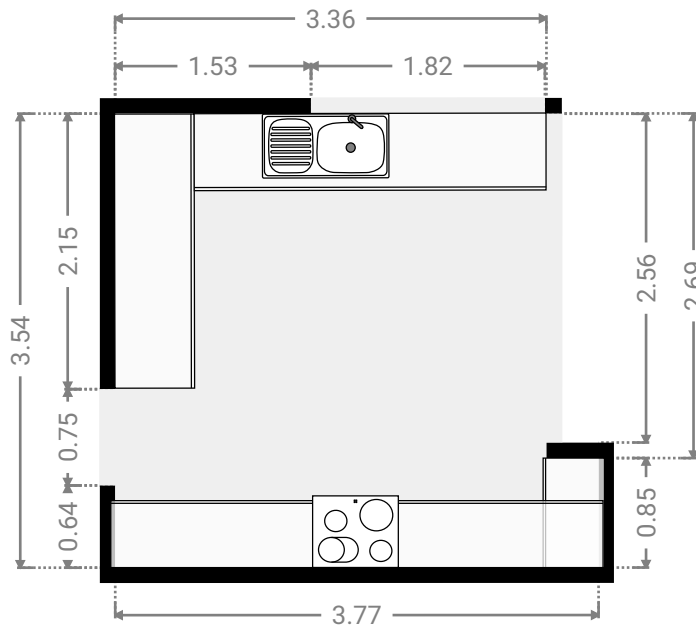
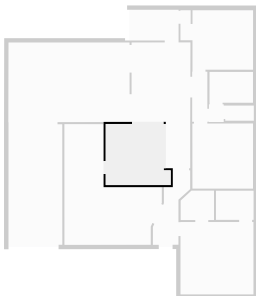
▼ **Hall**
Ground Floor

WIDTH: 0.88 m • LENGTH: 2.90 m
AREA: 2.55 m² • PERIMETER: 7.56 m



▼ **Kitchen**
Ground Floor

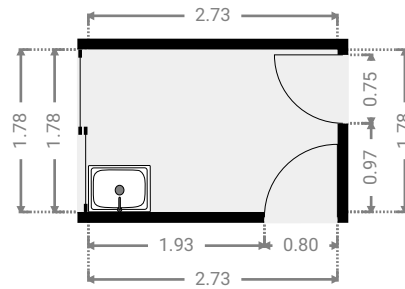
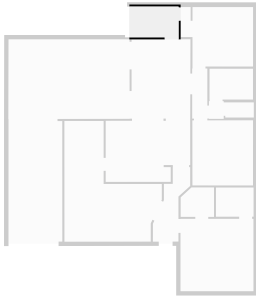
WIDTH: 3.77 m • LENGTH: 3.54 m
AREA: 12.24 m² • PERIMETER: 14.61 m



FLOORS: 1

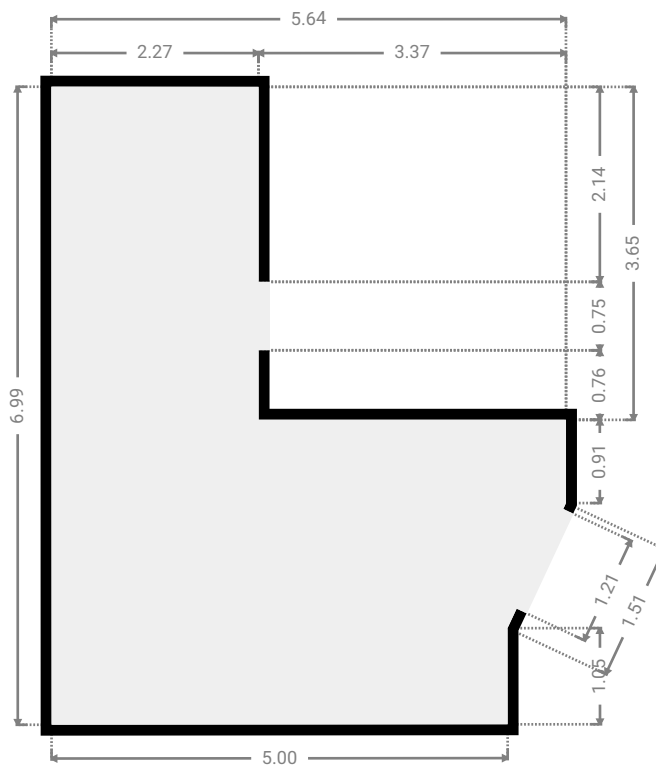
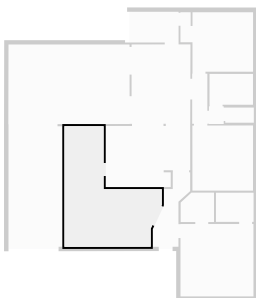
▼ **Laundry Room**
Ground Floor

WIDTH: 2.73 m • LENGTH: 1.78 m
AREA: 4.86 m² • PERIMETER: 9.02 m



▼ **Living Room**
Ground Floor

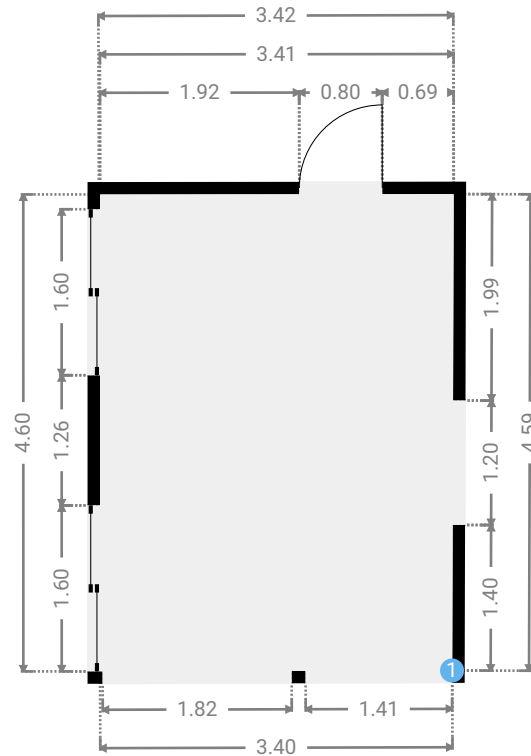
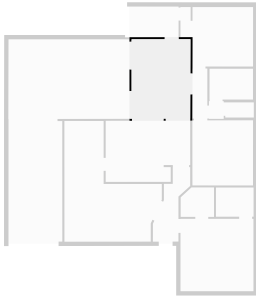
WIDTH: 5.64 m • LENGTH: 6.99 m
AREA: 26.02 m² • PERIMETER: 24.77 m



FLOORS: 1

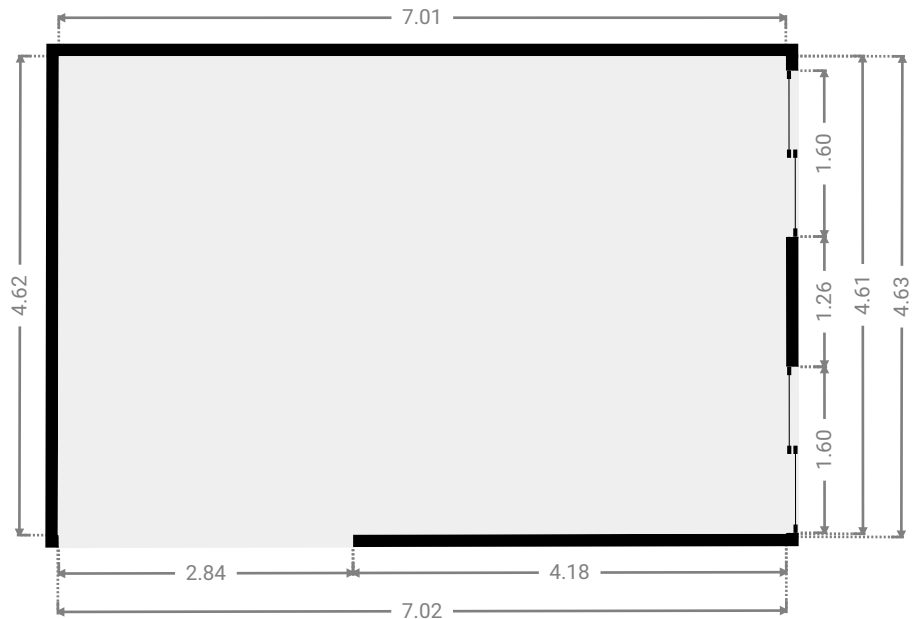
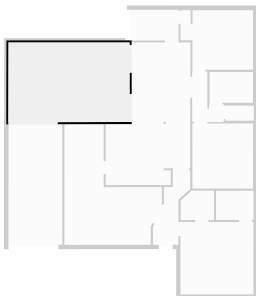
▼ Other
Ground Floor

WIDTH: 3.42 m • LENGTH: 4.60 m
AREA: 15.64 m² • PERIMETER: 16.00 m



▼ Outdoor Area
Ground Floor

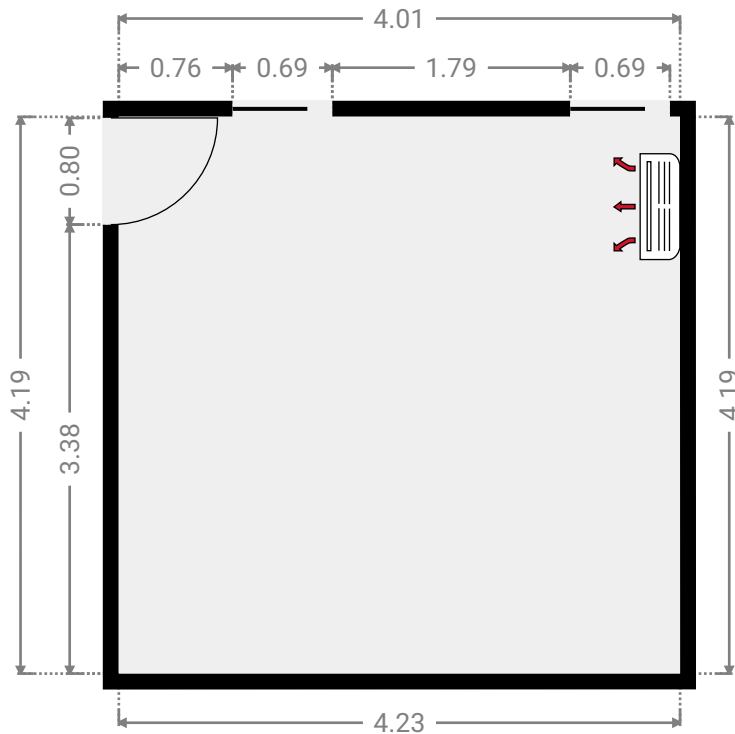
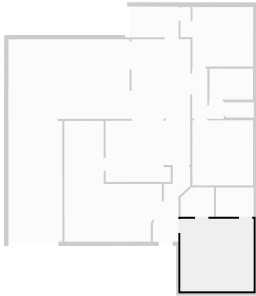
WIDTH: 7.02 m • LENGTH: 4.63 m • CEILING HEIGHT: 2.17 m
AREA: 32.36 m² • PERIMETER: 23.26 m



FLOORS: 1

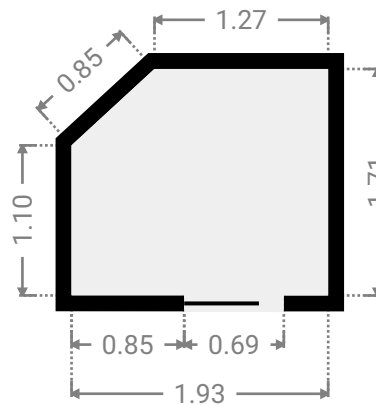
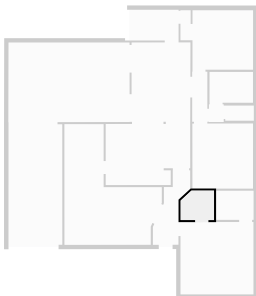
▼ **Primary Bedroom**
Ground Floor

WIDTH: 4.23 m • LENGTH: 4.19 m
AREA: 17.71 m² • PERIMETER: 16.83 m



▼ **WIR**
Ground Floor

WIDTH: 1.93 m • LENGTH: 1.71 m • CEILING HEIGHT: 2.17 m
AREA: 3.11 m² • PERIMETER: 6.92 m



FLOORS: 1

▼ Toilet
Ground Floor

WIDTH: 1.65 m • LENGTH: 0.87 m
AREA: 1.45 m² • PERIMETER: 5.06 m

