

9 Rosewood Avenue

Created on
2021-07-19

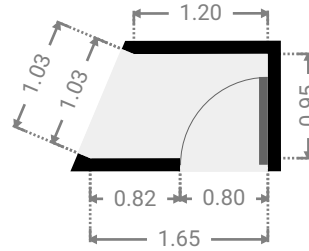
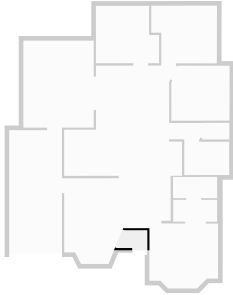
Floors
1

▼ Ground Floor



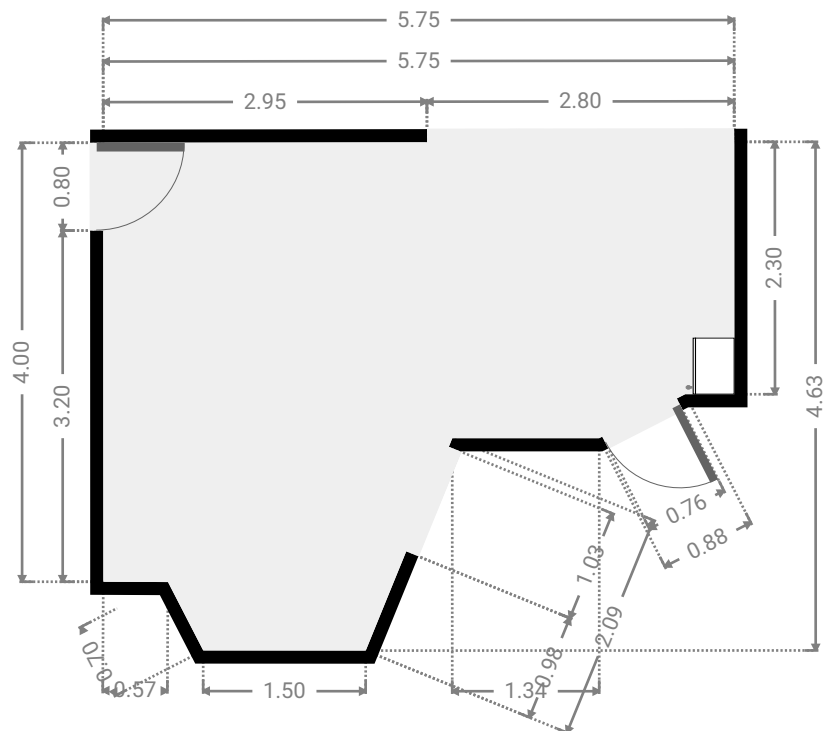
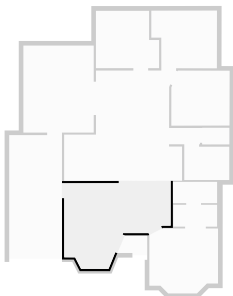
▼ Hall
Ground Floor

WIDTH: 1.62 m • LENGTH: 0.95 m
AREA: 1.35 m² • PERIMETER: 4.82 m



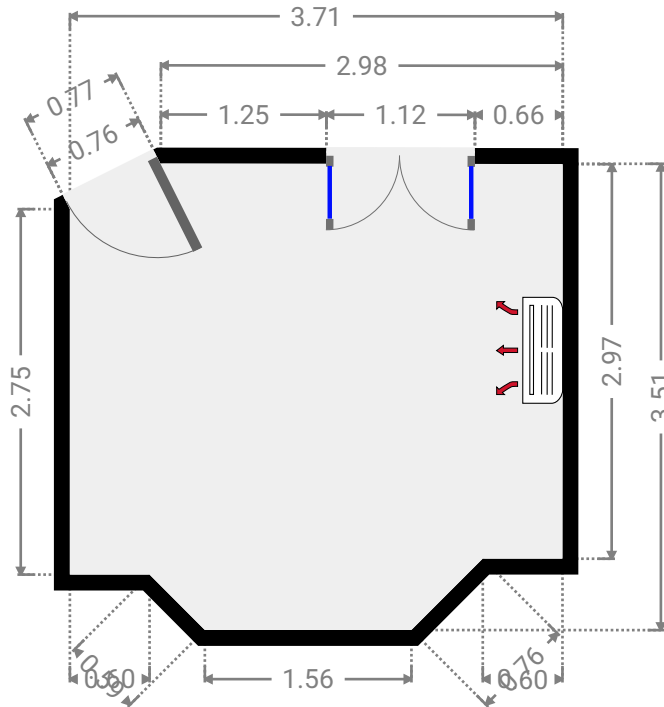
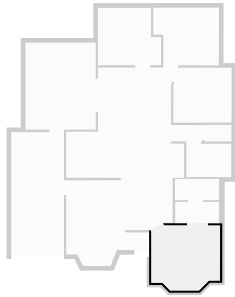
▼ Living Room
Ground Floor

WIDTH: 5.75 m • LENGTH: 4.63 m
AREA: 20.09 m² • PERIMETER: 19.58 m



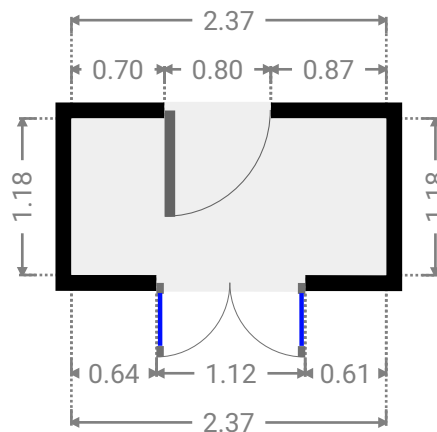
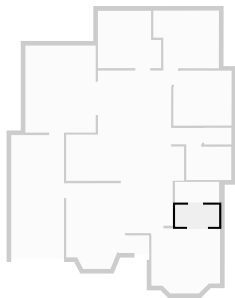
▼ **Master Bedroom**
Ground Floor

WIDTH: 3.71 m • LENGTH: 3.51 m
AREA: 12.10 m² • PERIMETER: 13.62 m



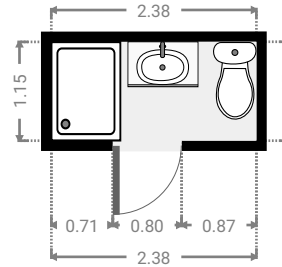
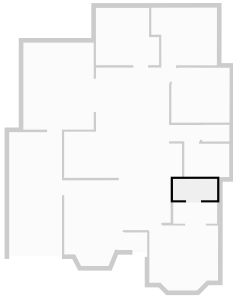
▼ **Closet**
Ground Floor

WIDTH: 2.37 m • LENGTH: 1.18 m
AREA: 2.79 m² • PERIMETER: 7.10 m



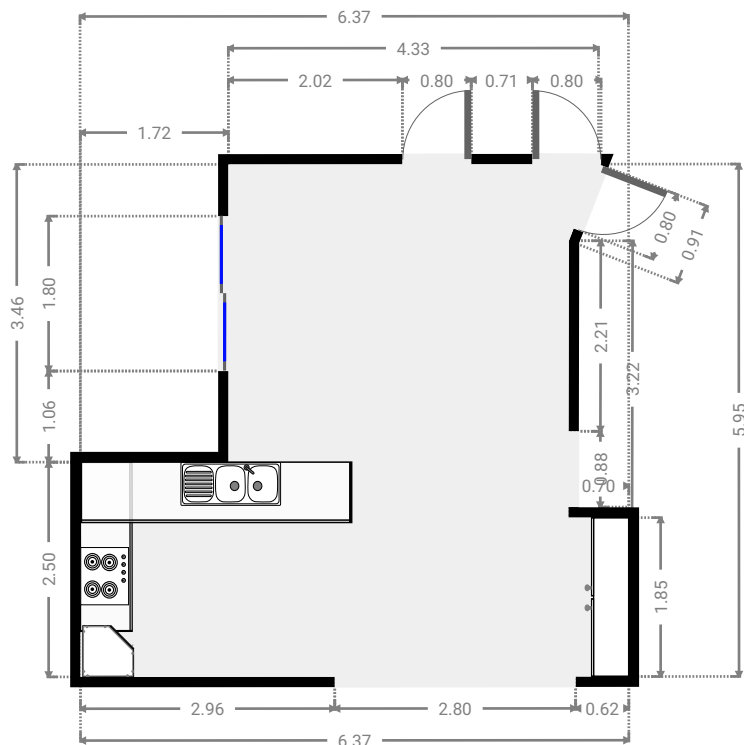
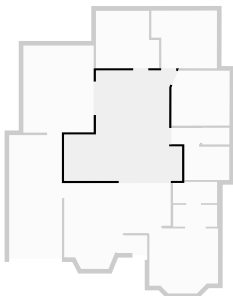
▼ Bathroom
Ground Floor

WIDTH: 2.38 m • LENGTH: 1.15 m
AREA: 2.74 m² • PERIMETER: 7.07 m



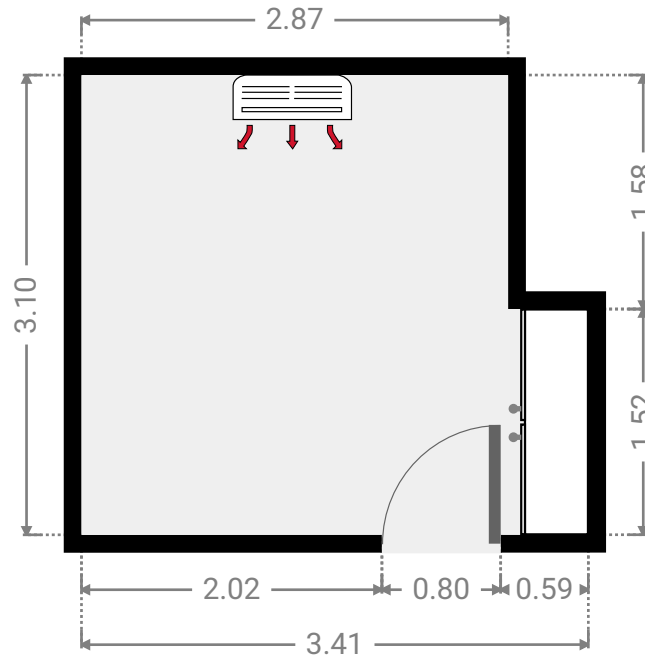
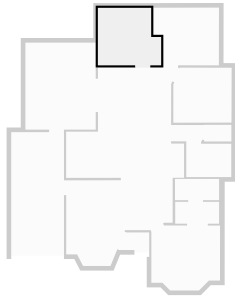
▼ Kitchen
Ground Floor

WIDTH: 6.37 m • LENGTH: 5.95 m
AREA: 29.29 m² • PERIMETER: 25.07 m



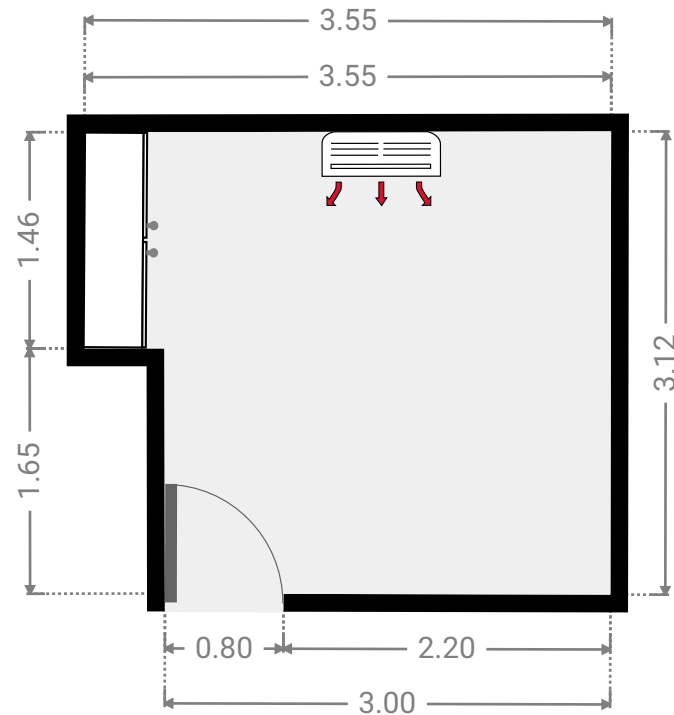
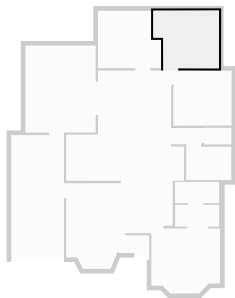
▼ **Bedroom**
Ground Floor

WIDTH: 3.41 m • LENGTH: 3.10 m
AREA: 9.72 m² • PERIMETER: 13.02 m



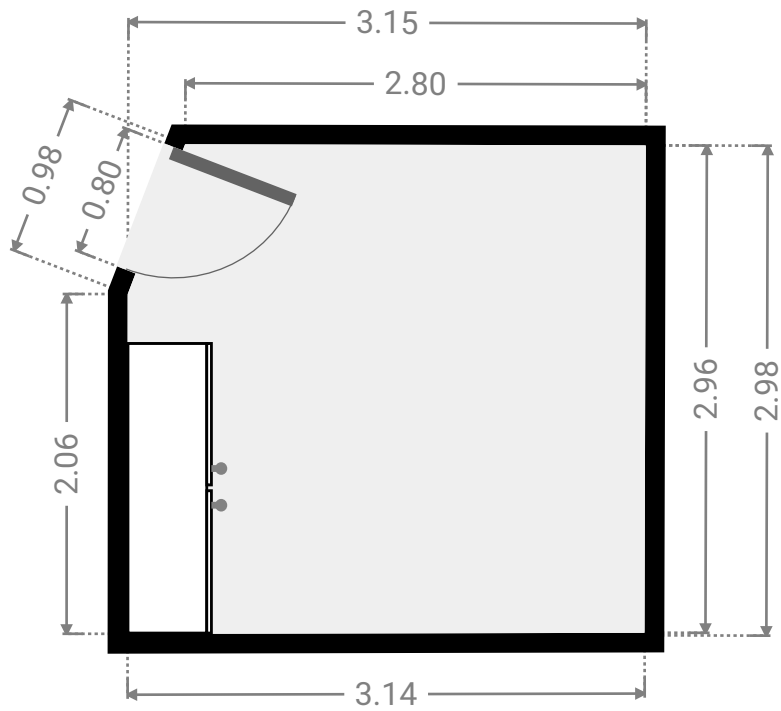
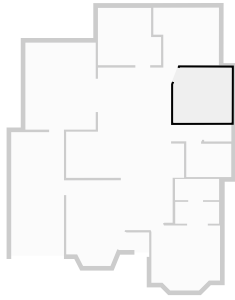
▼ **Bedroom**
Ground Floor

WIDTH: 3.55 m • LENGTH: 3.12 m
AREA: 10.14 m² • PERIMETER: 13.31 m



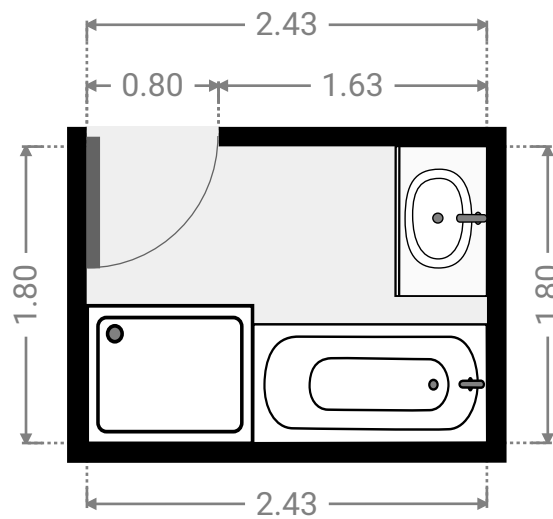
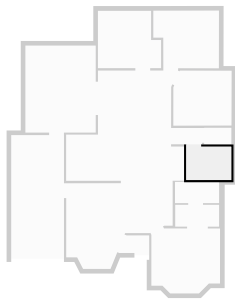
▼ **Bedroom**
Ground Floor

WIDTH: 3.15 m • LENGTH: 2.98 m
AREA: 9.17 m² • PERIMETER: 11.94 m



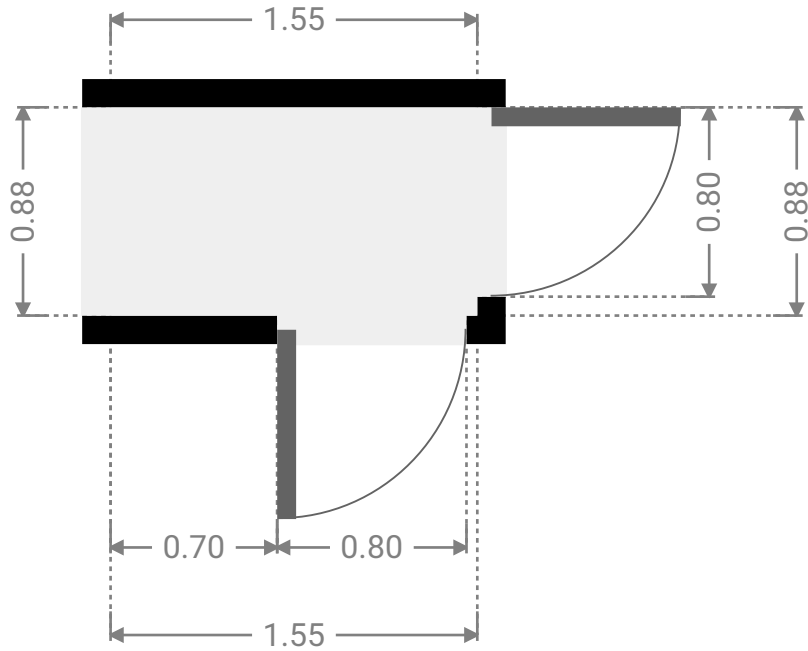
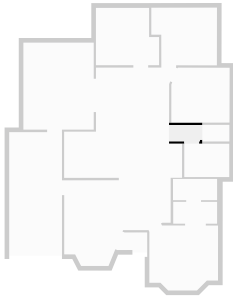
▼ **Bathroom**
Ground Floor

WIDTH: 2.43 m • LENGTH: 1.80 m
AREA: 4.38 m² • PERIMETER: 8.46 m



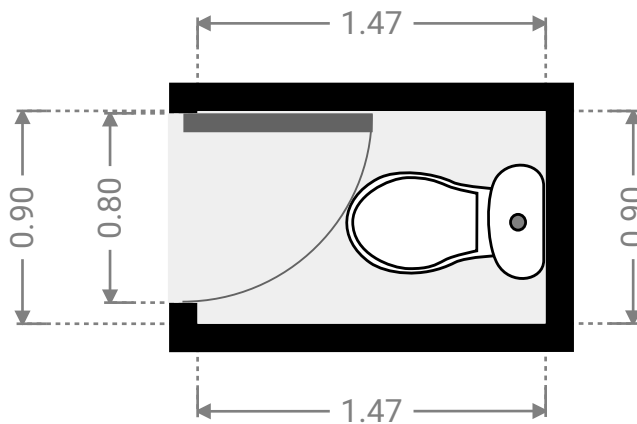
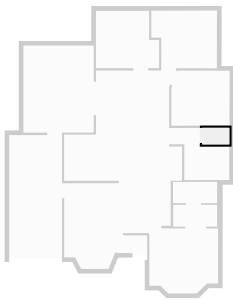
▼ **Hall**
Ground Floor

WIDTH: 1.55 m • LENGTH: 0.88 m
AREA: 1.36 m² • PERIMETER: 4.86 m



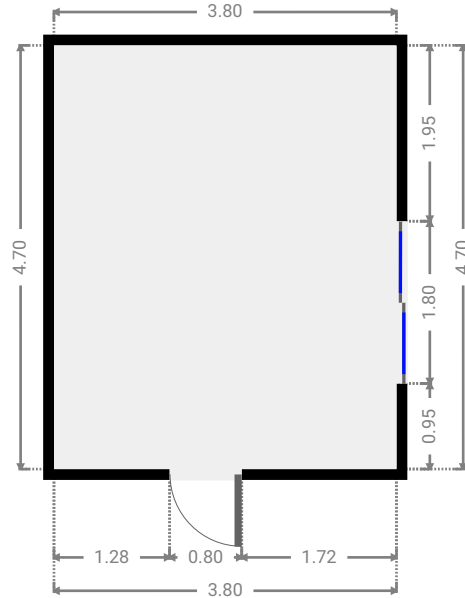
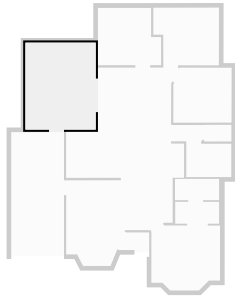
▼ **Toilet**
Ground Floor

WIDTH: 1.47 m • LENGTH: 0.90 m
AREA: 1.32 m² • PERIMETER: 4.74 m



▼ Other
Ground Floor

WIDTH: 3.80 m • LENGTH: 4.70 m
AREA: 17.86 m² • PERIMETER: 17.00 m



▼ Garage
Ground Floor

WIDTH: 2.85 m • LENGTH: 6.56 m
AREA: 18.70 m² • PERIMETER: 18.82 m

