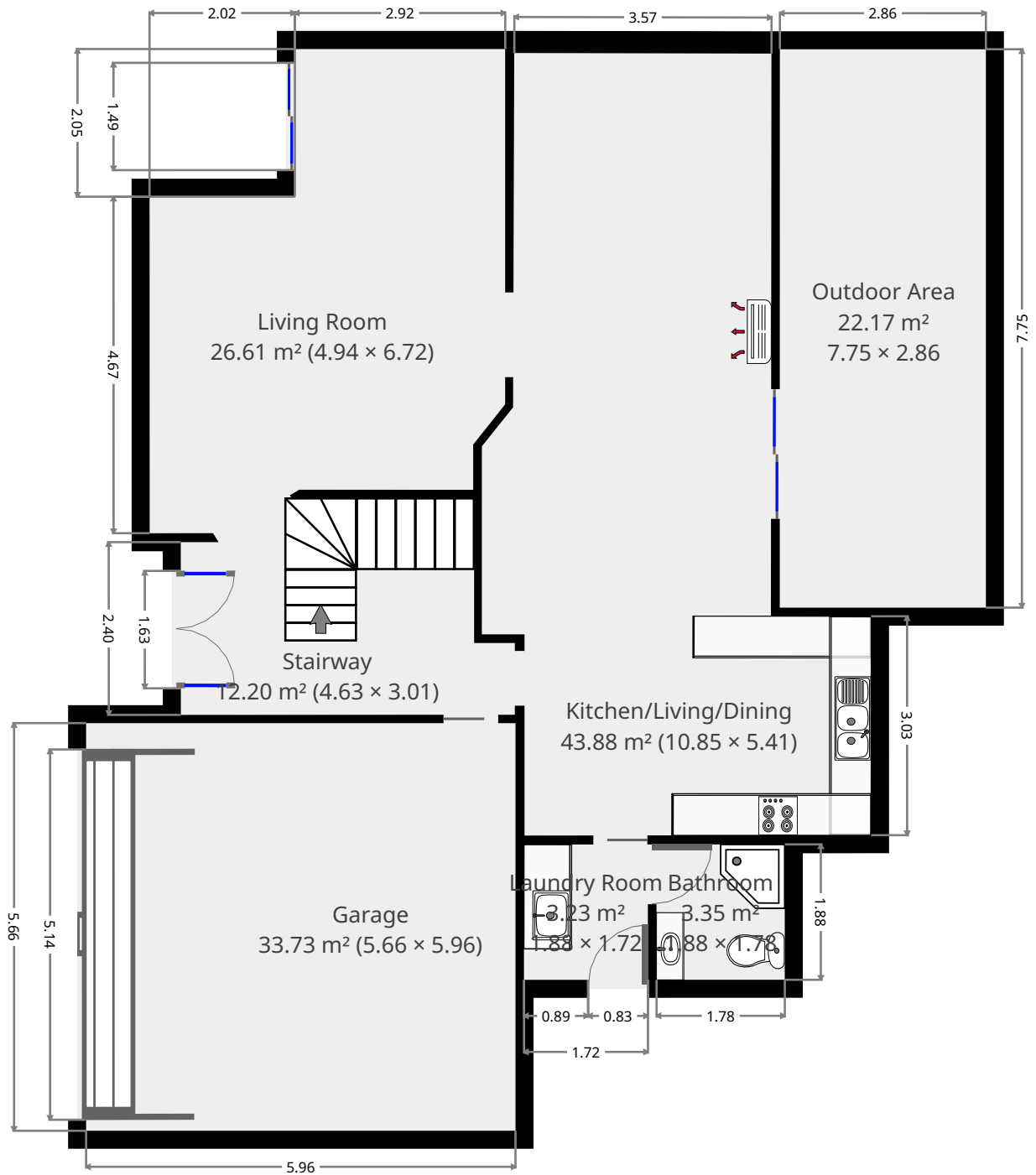
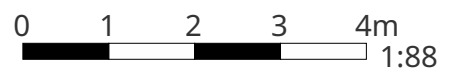


9 Neill Street

Ground Floor



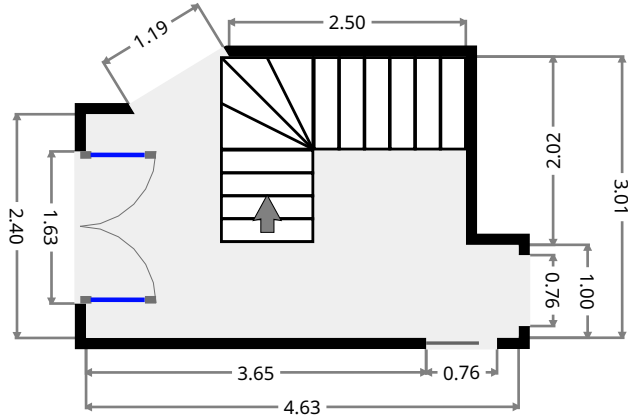
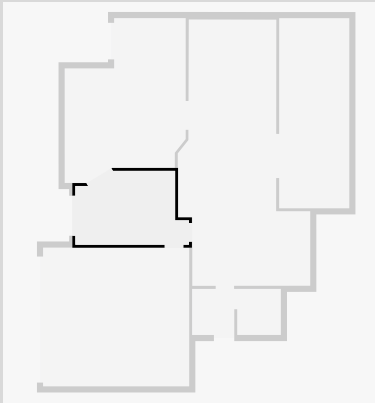
THIS FLOORPLAN IS PROVIDED WITHOUT WARRANTY OF ANY KIND. SENSOPIA DISCLAIMS ANY WARRANTY INCLUDING, WITHOUT LIMITATION, SATISFACTORY QUALITY OR ACCURACY OF DIMENSIONS.



9 Neill Street

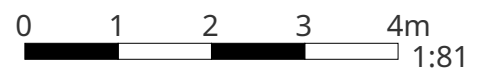
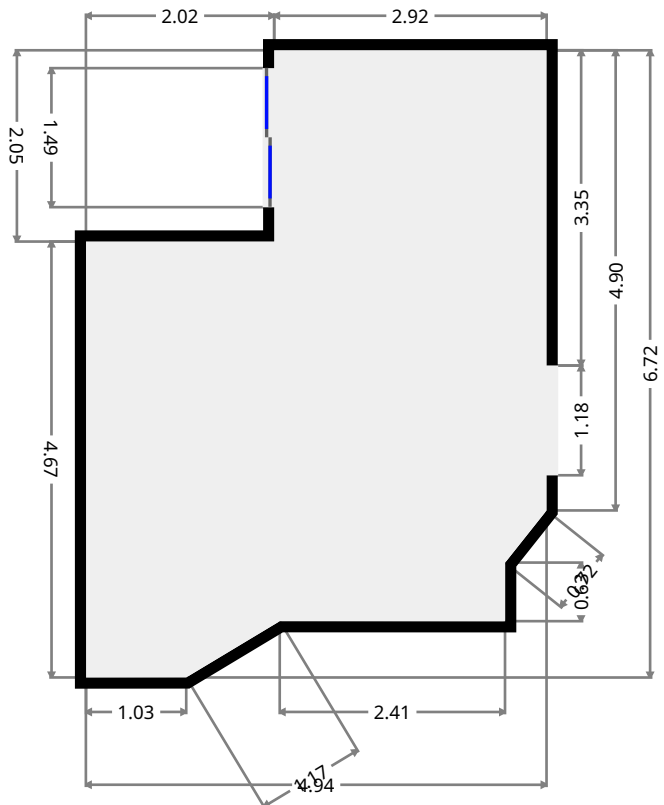
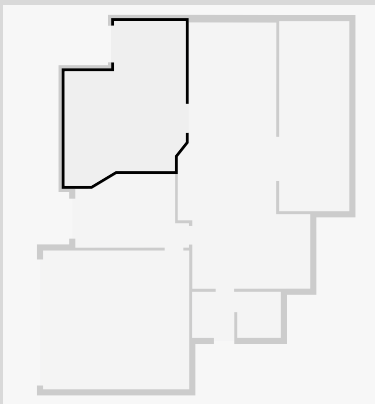
Stairway

Width: 3.01 m
 Length: 4.63 m
 Area: 12.20 m²
 Perimeter: 14.86 m



Living Room

Width: 4.94 m
 Length: 6.72 m
 Area: 26.61 m²
 Perimeter: 22.59 m

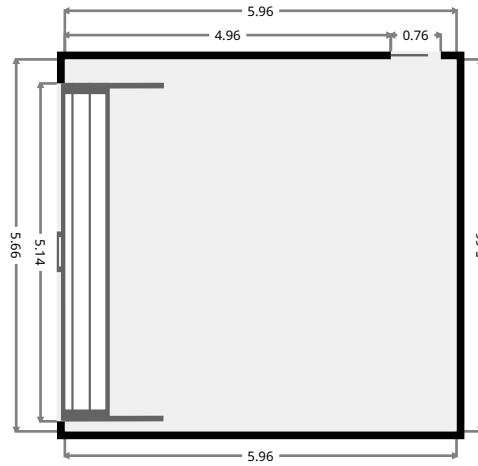
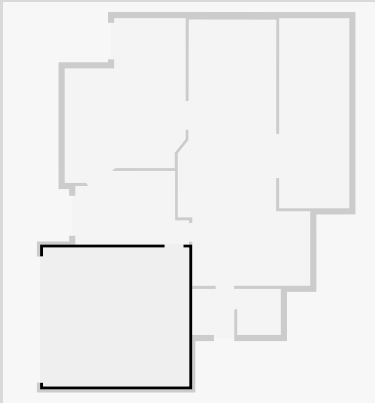


THIS FLOORPLAN IS PROVIDED WITHOUT WARRANTY OF ANY KIND. SENSOPIA DISCLAIMS ANY WARRANTY INCLUDING, WITHOUT LIMITATION, SATISFACTORY QUALITY OR ACCURACY OF DIMENSIONS.

9 Neill Street

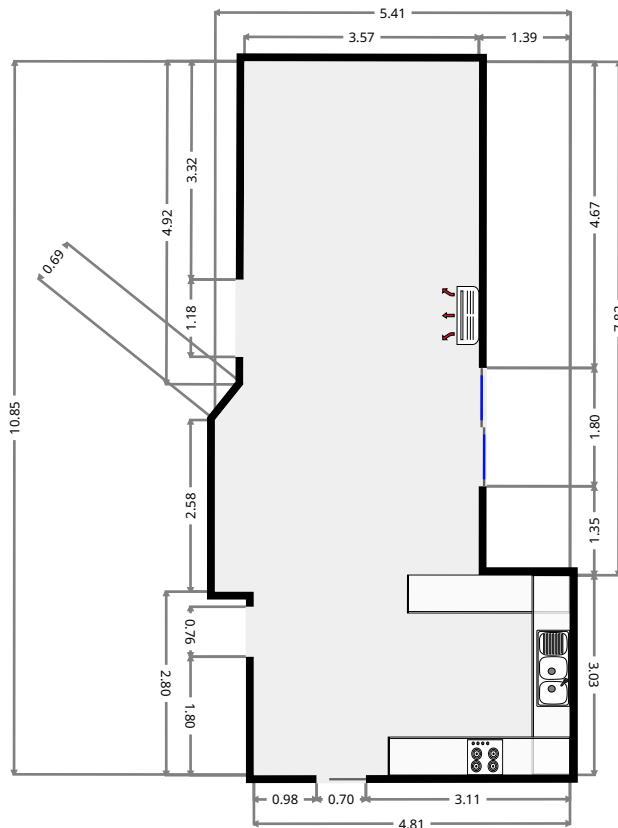
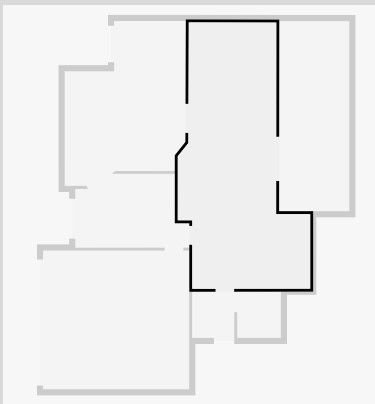
Garage

Width: 5.66 m
 Length: 5.96 m
 Area: 33.73 m²
 Perimeter: 23.24 m



Kitchen/Living/Dining

Width: 5.41 m
 Length: 10.85 m
 Area: 43.88 m²
 Perimeter: 32.23 m

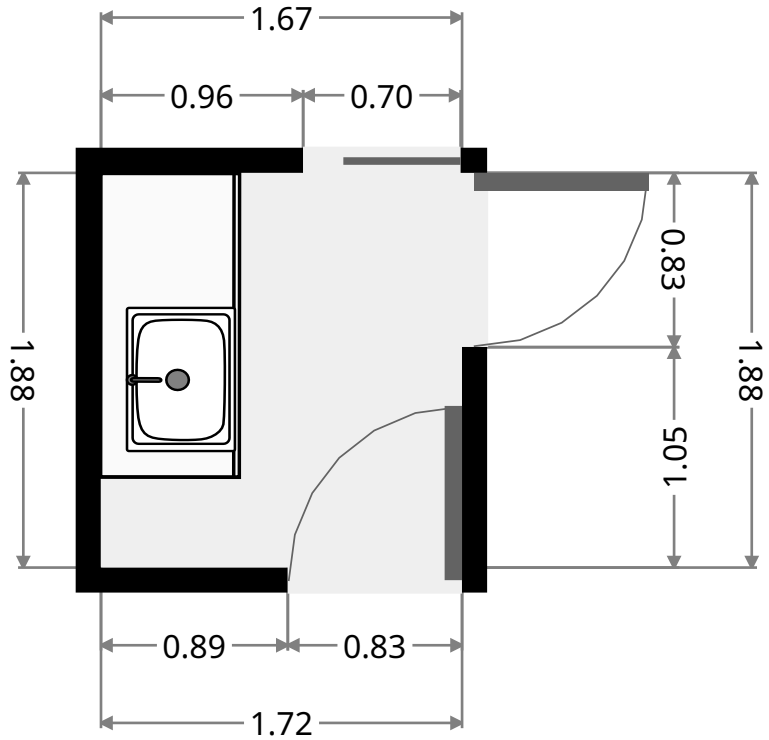
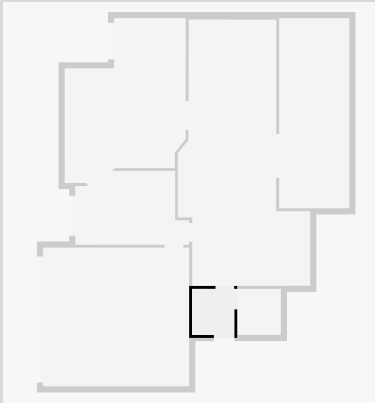


THIS FLOORPLAN IS PROVIDED WITHOUT WARRANTY OF ANY KIND. SENSOPIA DISCLAIMS ANY WARRANTY INCLUDING, WITHOUT LIMITATION, SATISFACTORY QUALITY OR ACCURACY OF DIMENSIONS.

9 Neill Street

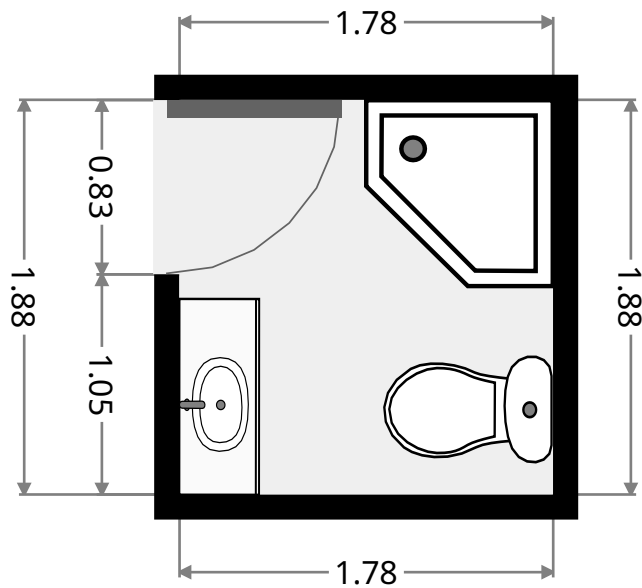
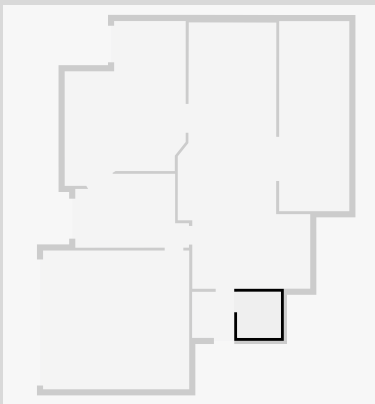
Laundry Room

Width: 1.72 m
 Length: 1.88 m
 Area: 3.23 m²
 Perimeter: 7.20 m

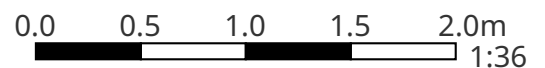


Bathroom

Width: 1.78 m
 Length: 1.88 m
 Area: 3.35 m²
 Perimeter: 7.32 m



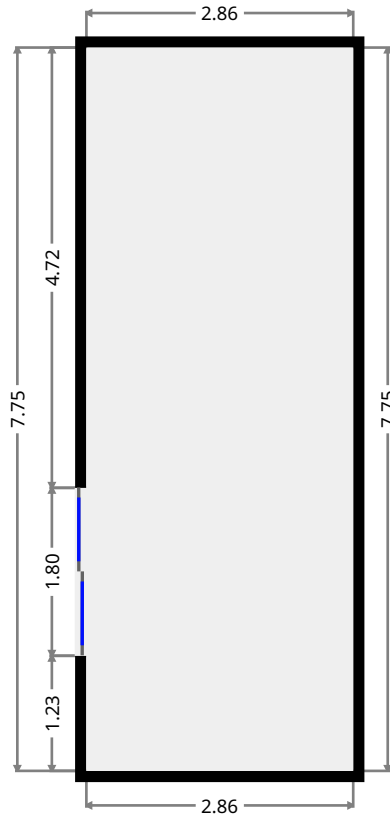
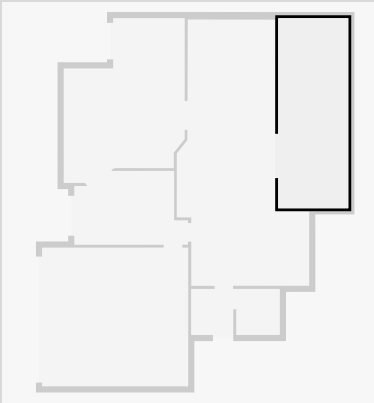
THIS FLOORPLAN IS PROVIDED WITHOUT WARRANTY OF ANY KIND. SENSOPIA DISCLAIMS ANY WARRANTY INCLUDING, WITHOUT LIMITATION, SATISFACTORY QUALITY OR ACCURACY OF DIMENSIONS.



9 Neill Street

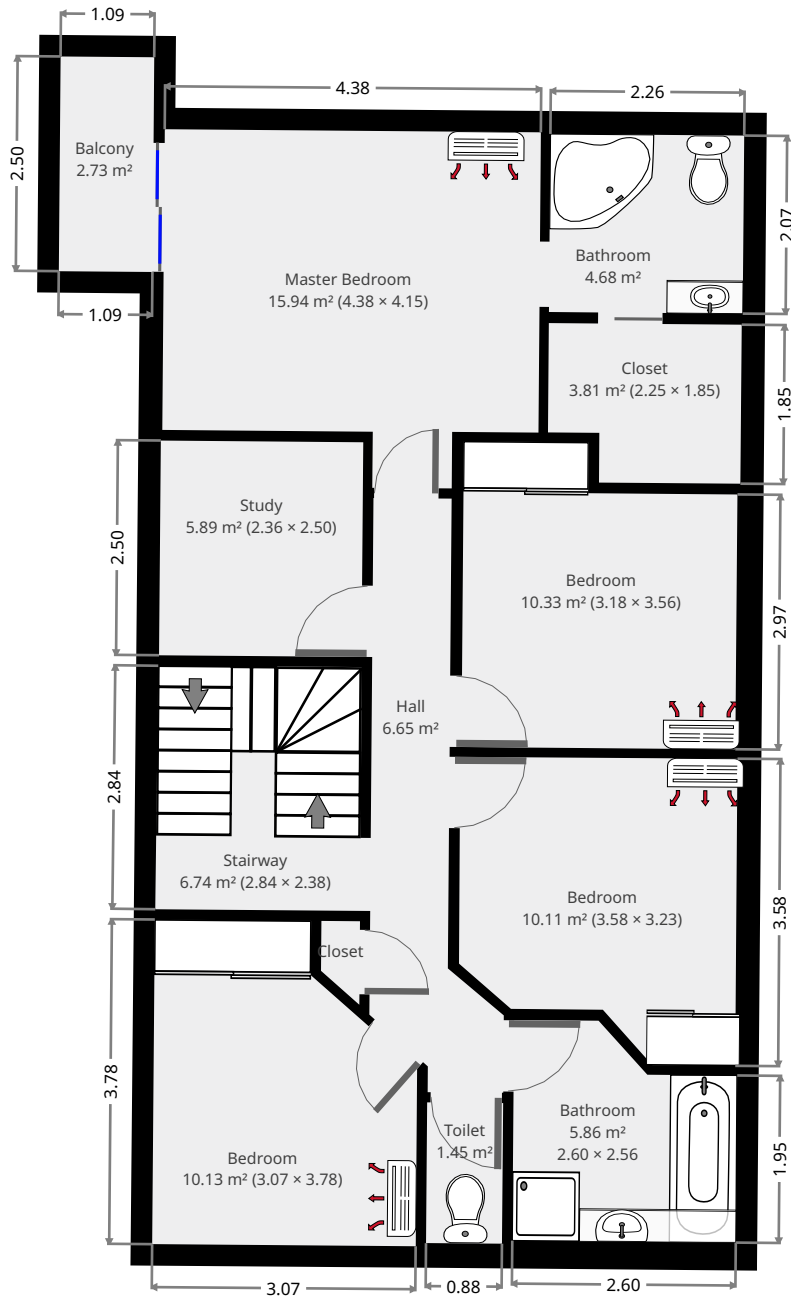
Outdoor Area

Width: 2.86 m
Length: 7.75 m
Area: 22.17 m²
Perimeter: 21.22 m

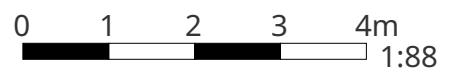


9 Neill Street

1st Floor



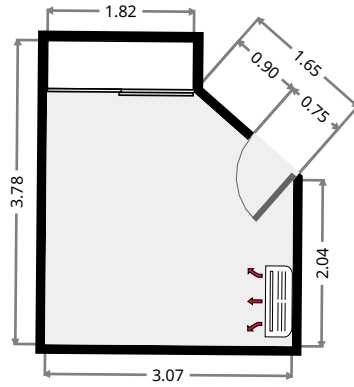
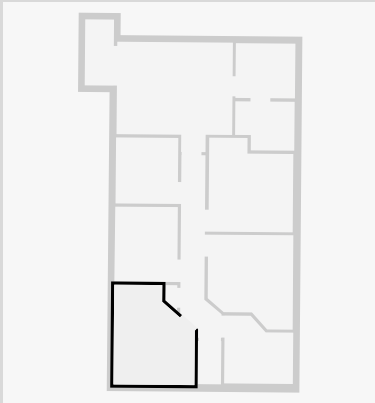
THIS FLOORPLAN IS PROVIDED WITHOUT WARRANTY OF ANY KIND. SENSOPIA DISCLAIMS ANY WARRANTY INCLUDING, WITHOUT LIMITATION, SATISFACTORY QUALITY OR ACCURACY OF DIMENSIONS.



9 Neill Street

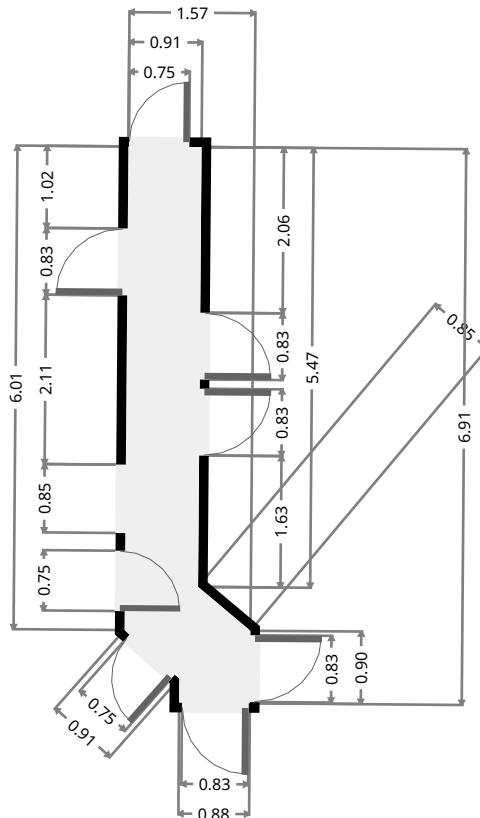
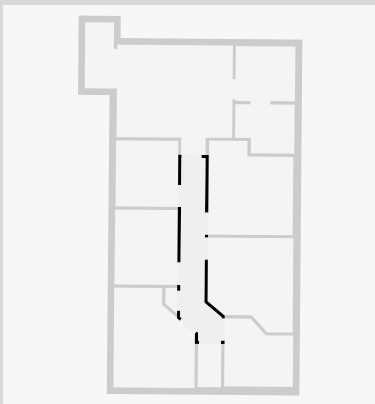
Bedroom

Width: 3.07 m
Length: 3.78 m
Area: 10.13 m²
Perimeter: 13.02 m



Hall

Width: 1.57 m
Length: 6.91 m
Area: 6.65 m²
Perimeter: 16.23 m

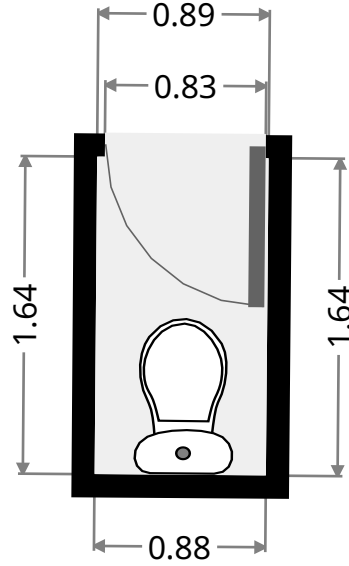
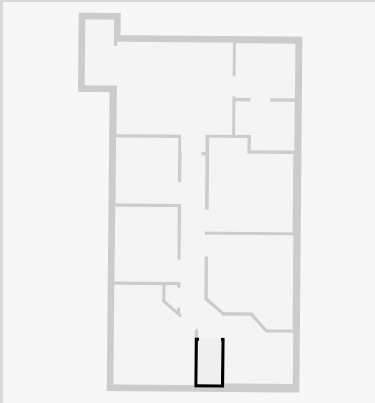


THIS FLOORPLAN IS PROVIDED WITHOUT WARRANTY OF ANY KIND. SENSOPIA DISCLAIMS ANY WARRANTY INCLUDING, WITHOUT LIMITATION, SATISFACTORY QUALITY OR ACCURACY OF DIMENSIONS.

9 Neill Street

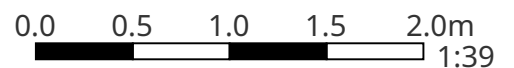
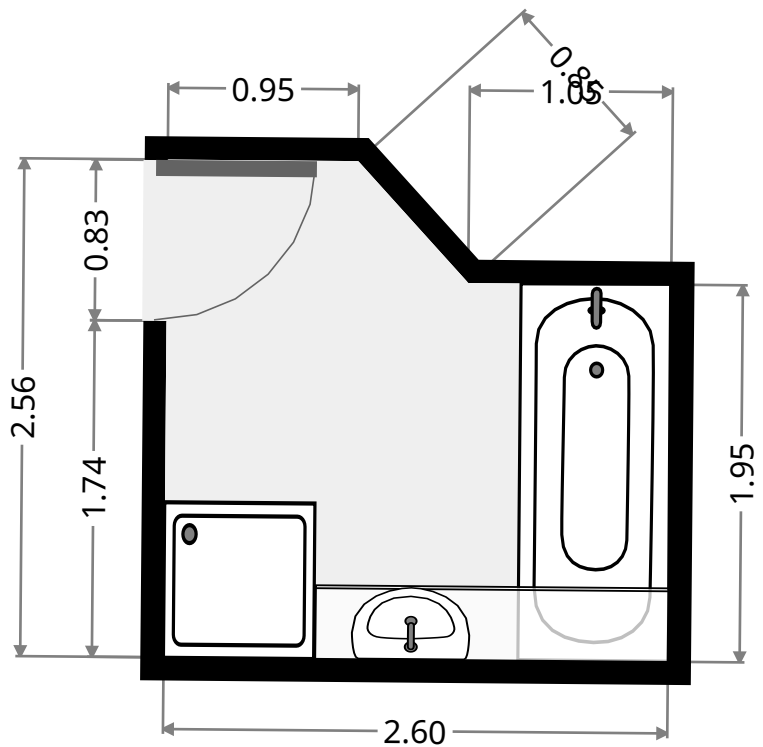
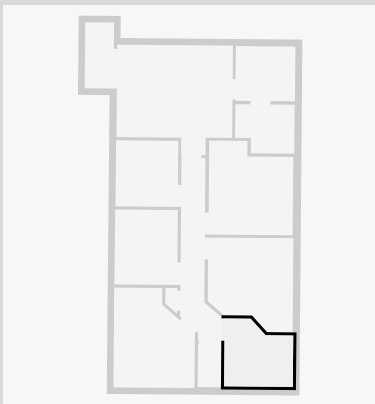
Toilet

Width: 0.88 m
 Length: 1.64 m
 Area: 1.45 m²
 Perimeter: 5.05 m



Bathroom

Width: 2.56 m
 Length: 2.60 m
 Area: 5.86 m²
 Perimeter: 9.99 m

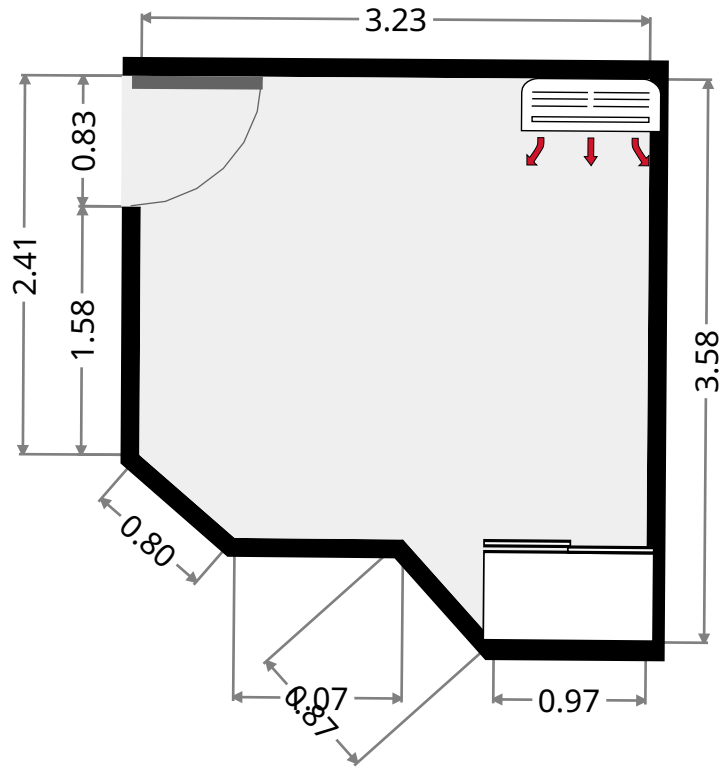
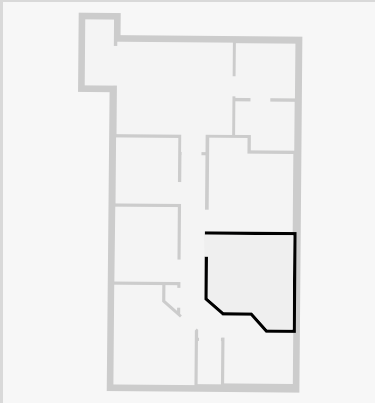


THIS FLOORPLAN IS PROVIDED WITHOUT WARRANTY OF ANY KIND. SENSOPIA DISCLAIMS ANY WARRANTY INCLUDING, WITHOUT LIMITATION, SATISFACTORY QUALITY OR ACCURACY OF DIMENSIONS.

9 Neill Street

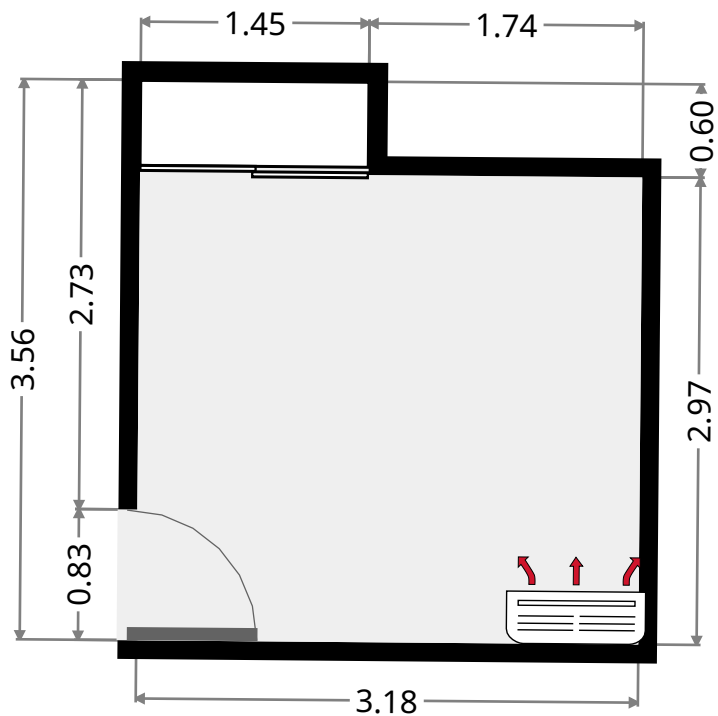
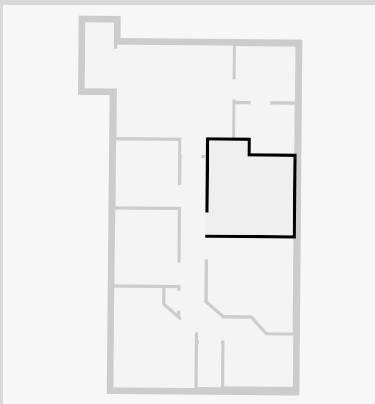
Bedroom

Width: 3.23 m
 Length: 3.58 m
 Area: 10.11 m²
 Perimeter: 12.92 m

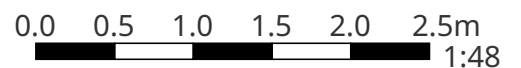


Bedroom

Width: 3.18 m
 Length: 3.56 m
 Area: 10.33 m²
 Perimeter: 13.50 m



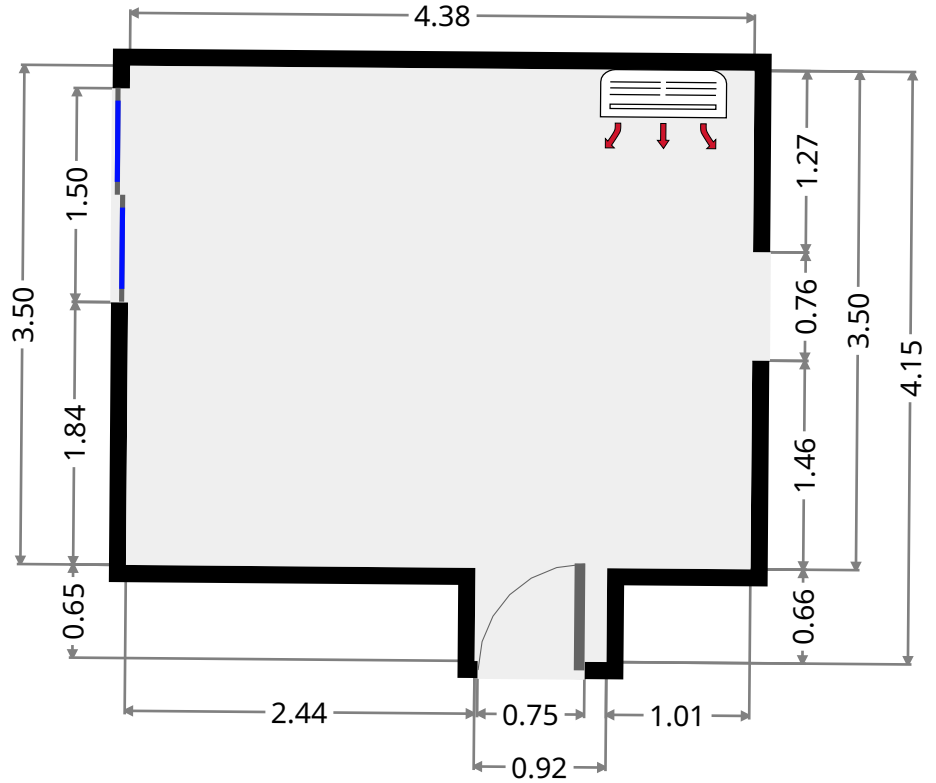
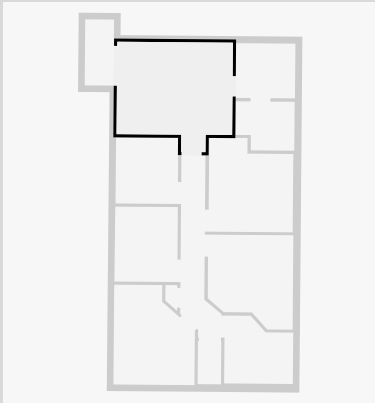
THIS FLOORPLAN IS PROVIDED WITHOUT WARRANTY OF ANY KIND. SENSOPIA DISCLAIMS ANY WARRANTY INCLUDING, WITHOUT LIMITATION, SATISFACTORY QUALITY OR ACCURACY OF DIMENSIONS.



9 Neill Street

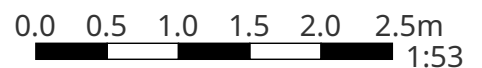
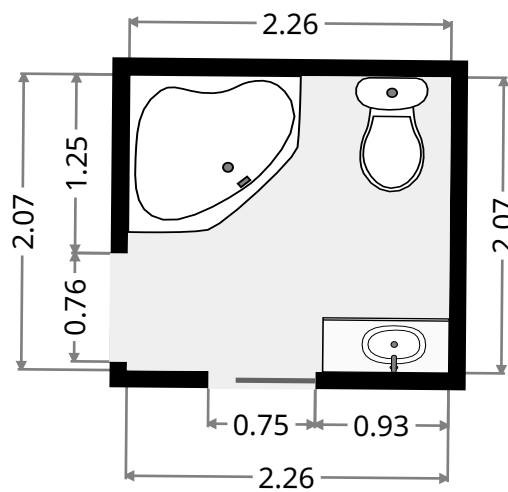
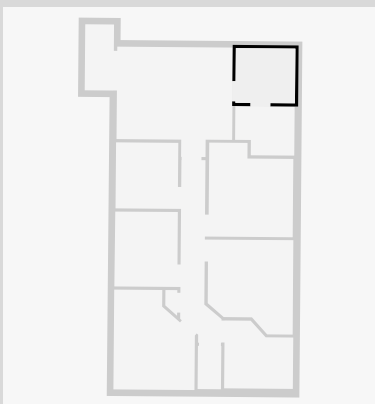
Master Bedroom

Width: 4.15 m
 Length: 4.38 m
 Area: 15.94 m²
 Perimeter: 17.07 m



Bathroom

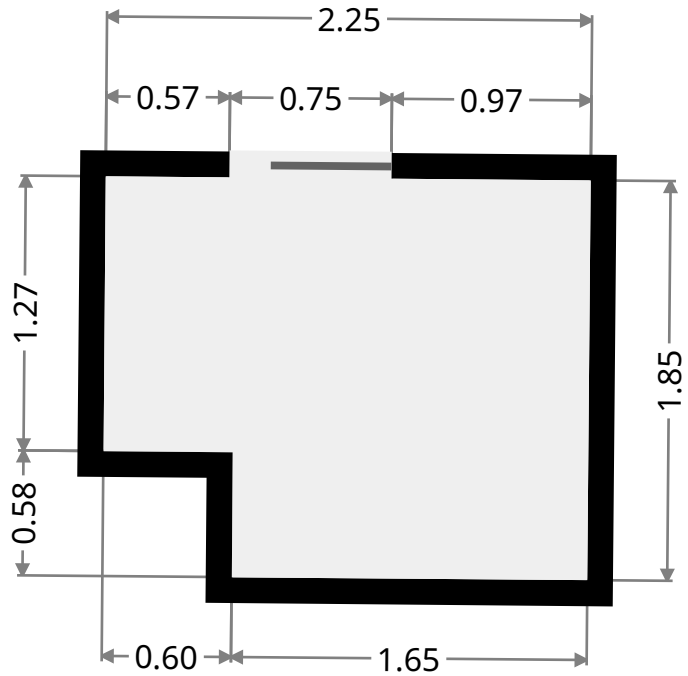
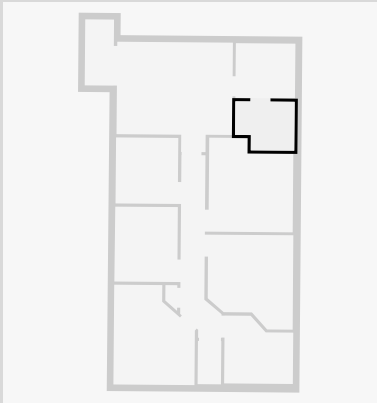
Width: 2.07 m
 Length: 2.26 m
 Area: 4.68 m²
 Perimeter: 8.66 m



9 Neill Street

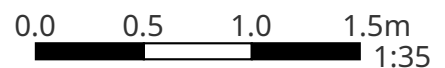
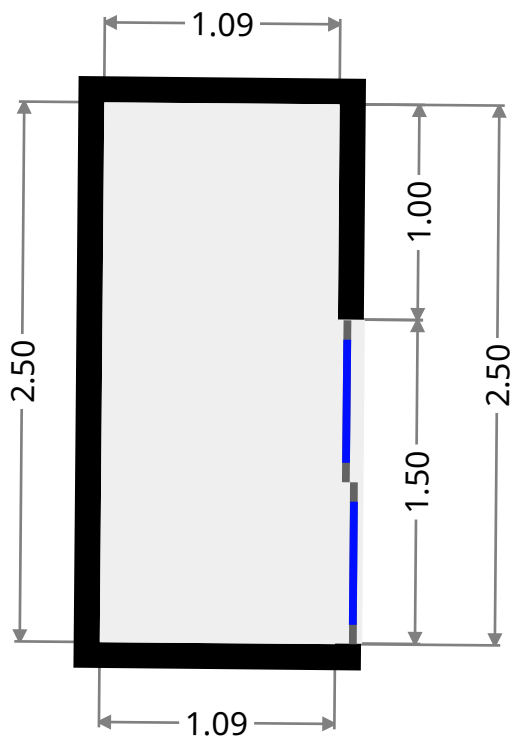
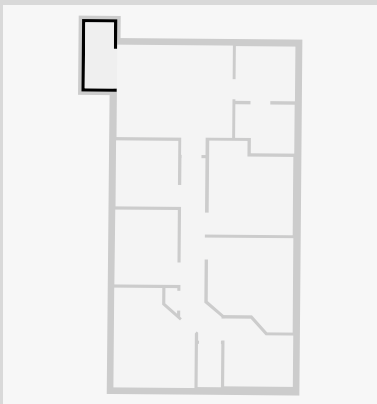
Closet

Width: 1.85 m
 Length: 2.25 m
 Area: 3.81 m²
 Perimeter: 8.20 m



Balcony

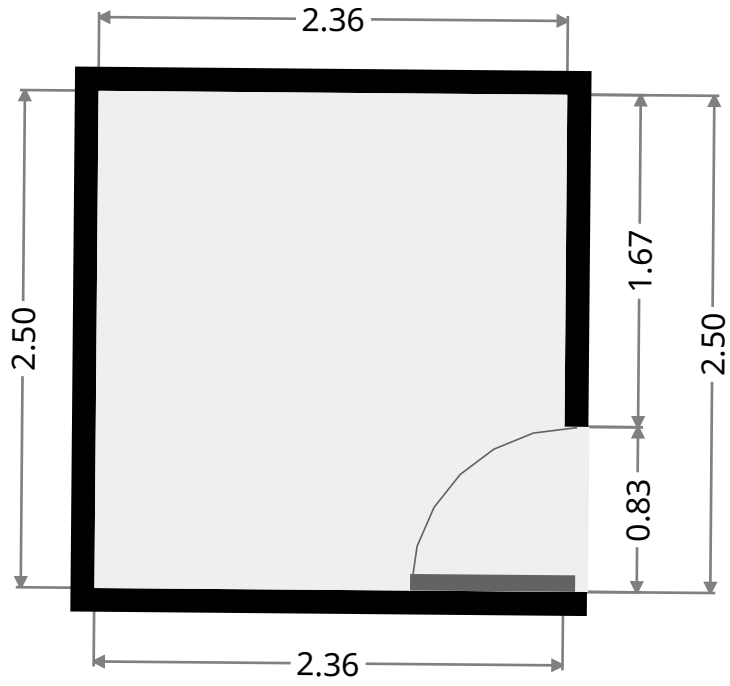
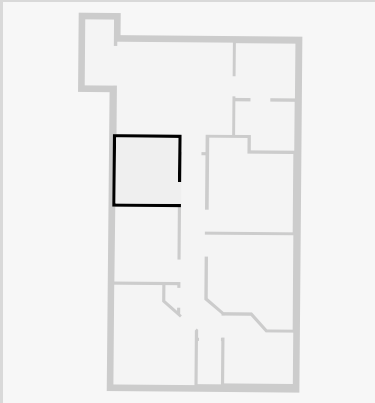
Width: 1.09 m
 Length: 2.50 m
 Area: 2.73 m²
 Perimeter: 7.18 m



9 Neill Street

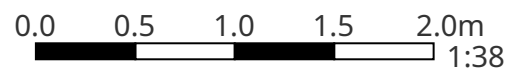
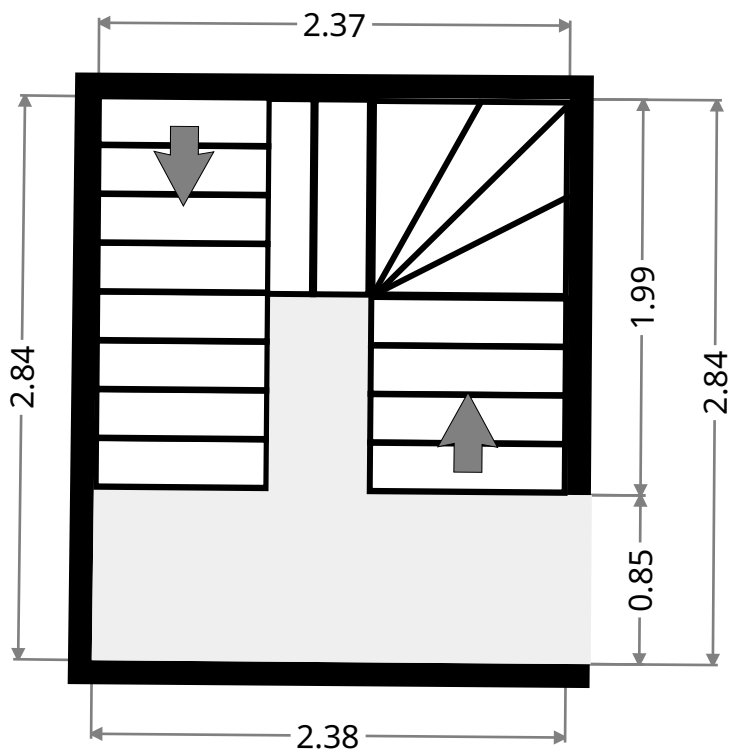
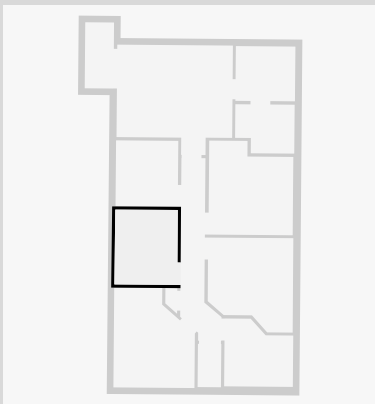
Study

Width: 2.36 m
Length: 2.50 m
Area: 5.89 m²
Perimeter: 9.71 m



Stairway

Width: 2.38 m
Length: 2.84 m
Area: 6.74 m²
Perimeter: 10.43 m



9 Neill Street

Closet

Width: 0.45 m
Length: 0.97 m
Area: 0.35 m²
Perimeter: 2.60 m

