

9 Athlone Court

Created on
2020-11-05

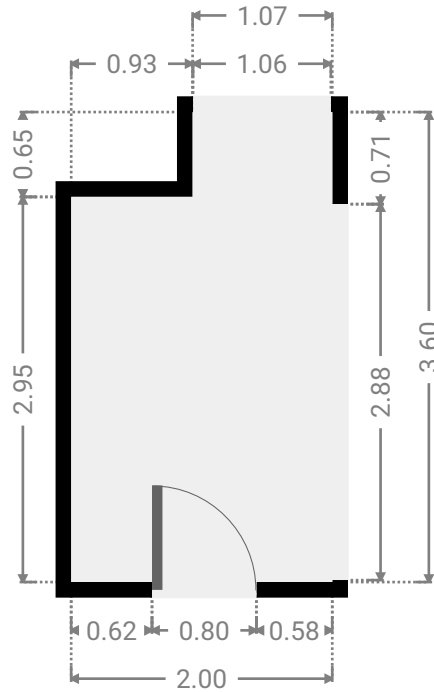
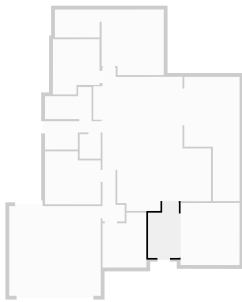
Floors
1

▼ Ground Floor



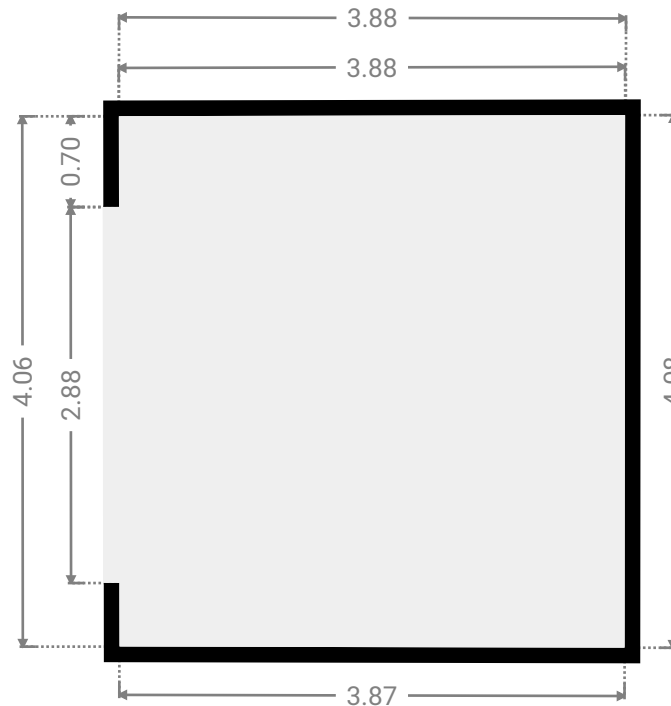
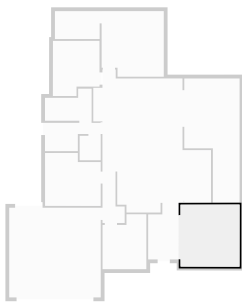
▼ **Hall**
Ground Floor

WIDTH:2.00 m · LENGTH:3.60 m
AREA:6.60 m² · PERIMETER:11.20 m



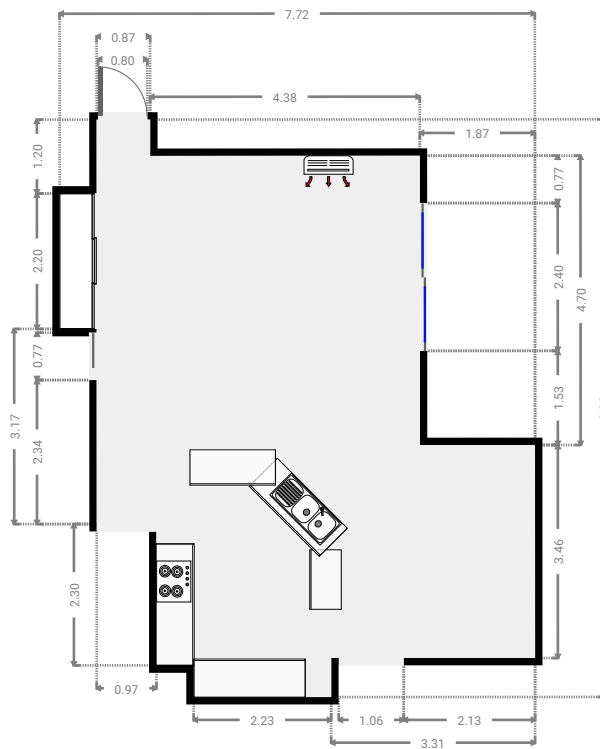
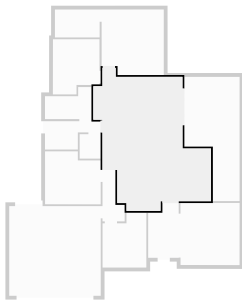
▼ **Living Room**
Ground Floor

WIDTH:3.88 m · LENGTH:4.08 m
AREA:15.77 m² · PERIMETER:15.89 m



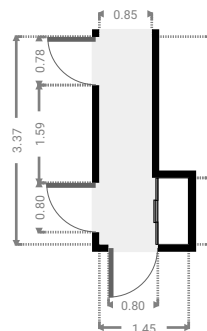
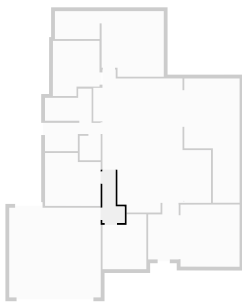
▼ Kitchen Ground Floor

WIDTH:7.72 m · LENGTH:9.38 m
AREA:50.52 m² · PERIMETER:34.21 m



▼ Hall Ground Floor

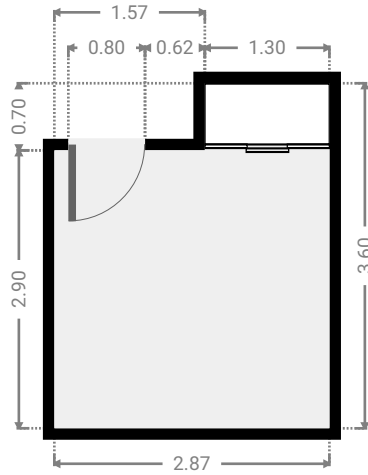
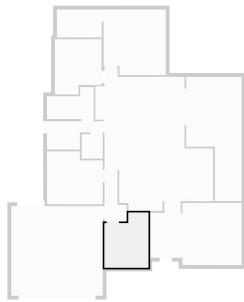
WIDTH:1.45 m · LENGTH:3.37 m
AREA:3.52 m² · PERIMETER:9.65 m



▼ Bedroom

Ground Floor

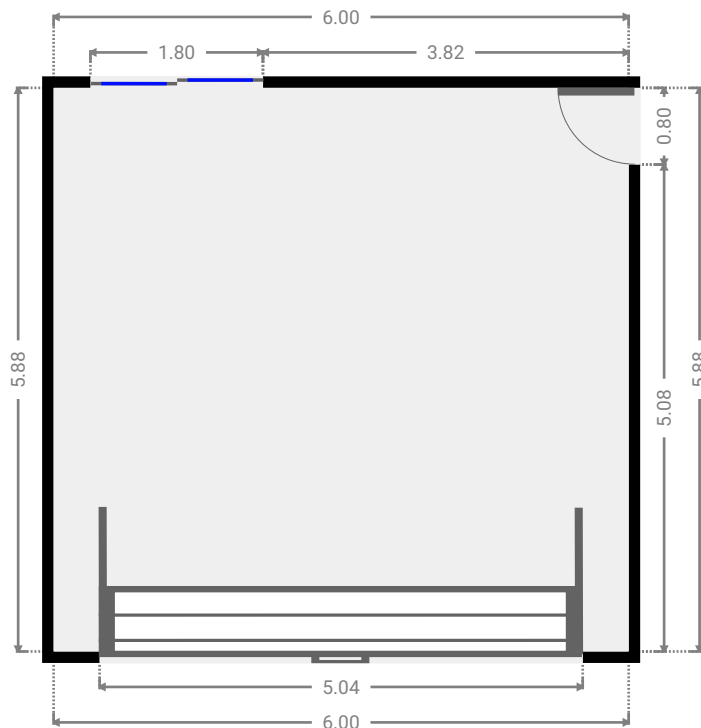
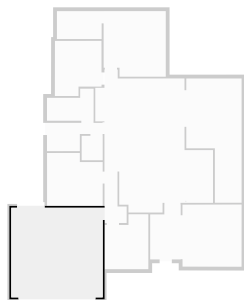
WIDTH:2.87 m · LENGTH:3.60 m
AREA:9.23 m² · PERIMETER:12.94 m



▼ Garage

Ground Floor

WIDTH:6.00 m · LENGTH:5.88 m
AREA:35.28 m² · PERIMETER:23.76 m

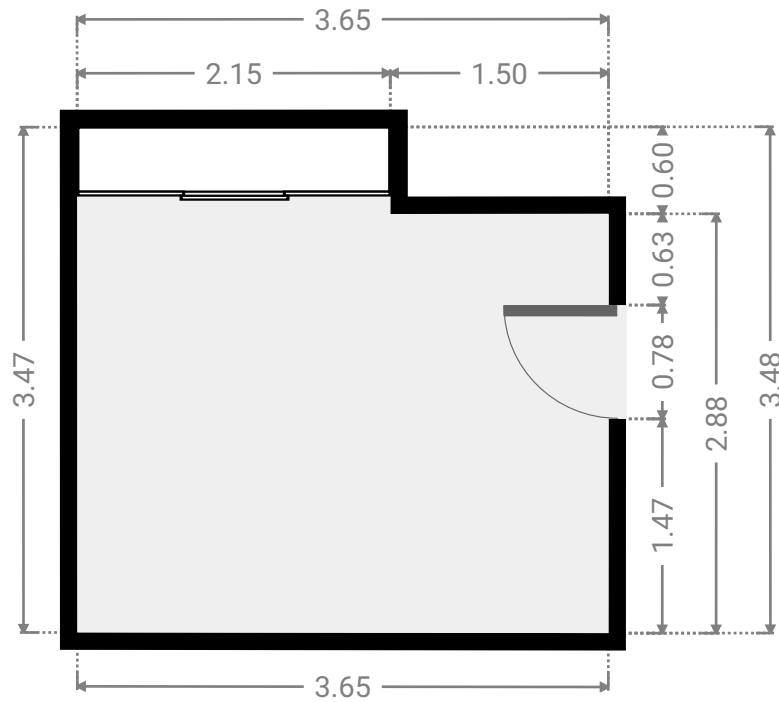
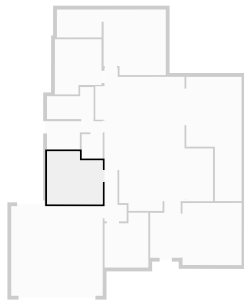


FLOORS:1

▼ **Bedroom**

Ground Floor

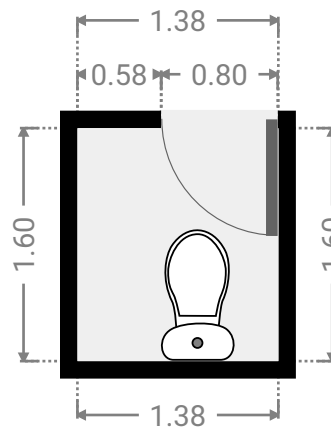
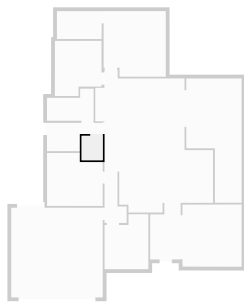
WIDTH:3.65 m · LENGTH:3.48 m
AREA:11.78 m² · PERIMETER:14.24 m



▼ **Toilet**

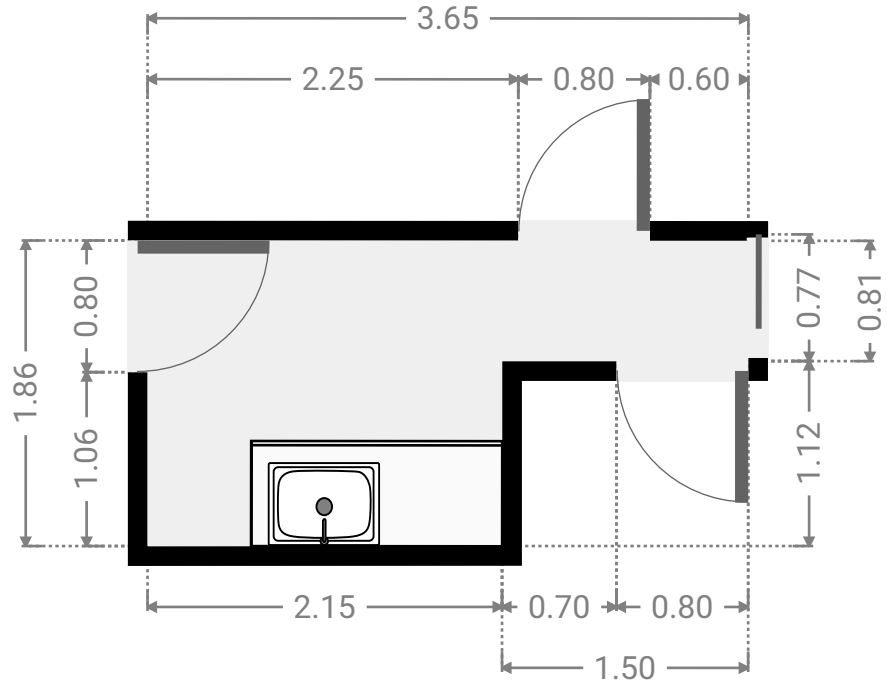
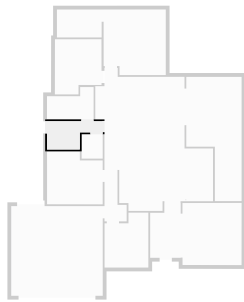
Ground Floor

WIDTH:1.38 m · LENGTH:1.60 m
AREA:2.21 m² · PERIMETER:5.96 m



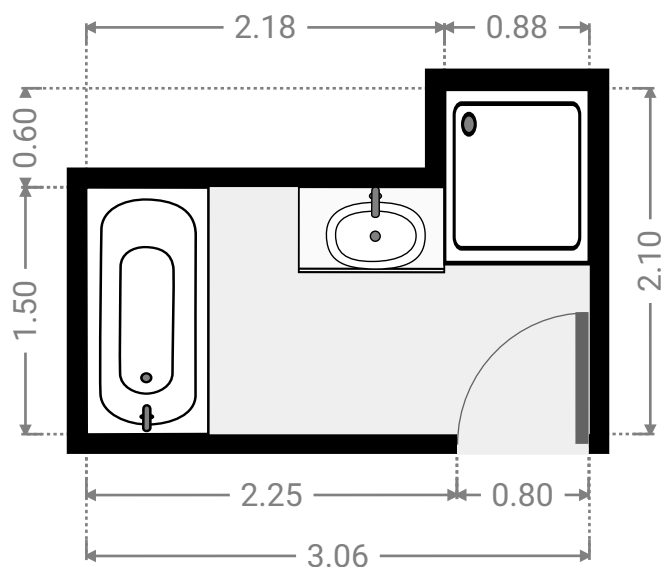
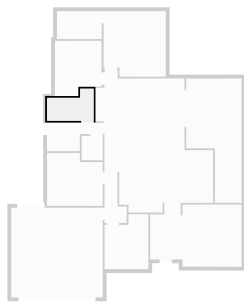
▼ Laundry Room
Ground Floor

WIDTH:3.65 m · LENGTH:1.86 m
AREA:5.09 m² · PERIMETER:11.01 m



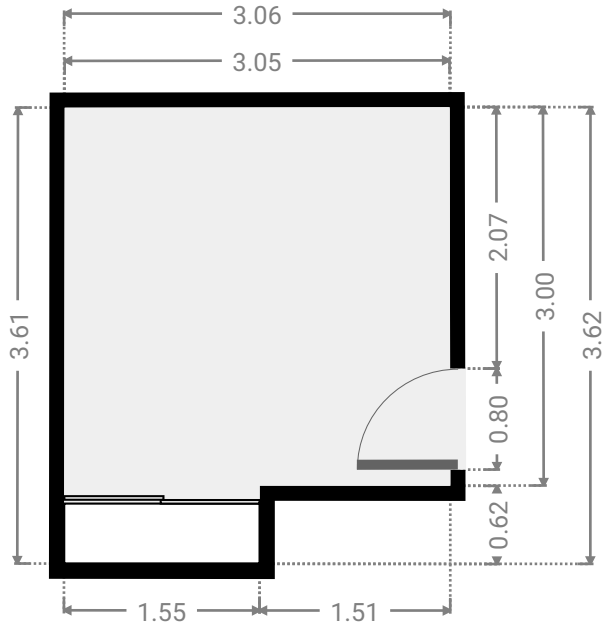
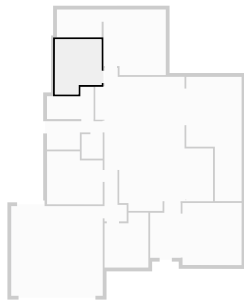
▼ Bathroom
Ground Floor

WIDTH:3.06 m · LENGTH:2.10 m
AREA:5.11 m² · PERIMETER:10.31 m



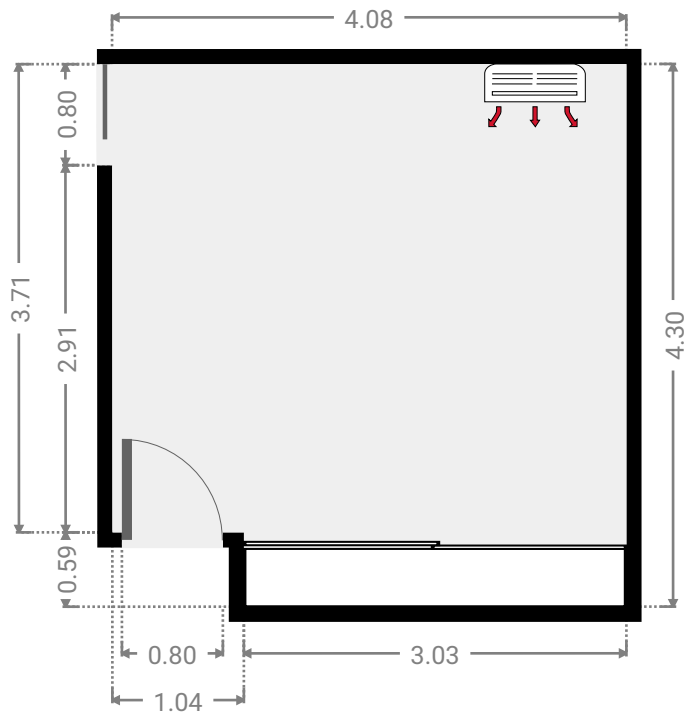
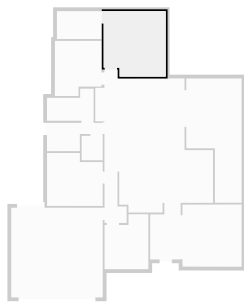
▼ **Bedroom**
Ground Floor

WIDTH:3.06 m · LENGTH:3.62 m
AREA:10.12 m² · PERIMETER:13.34 m



▼ **Master Bedroom**
Ground Floor

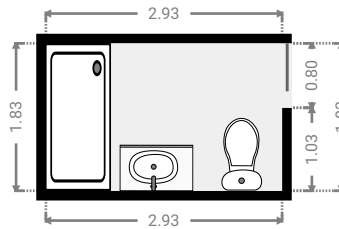
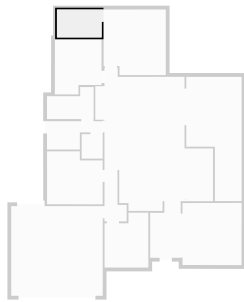
WIDTH:4.08 m · LENGTH:4.30 m
AREA:16.90 m² · PERIMETER:16.75 m



▼ Bathroom

Ground Floor

WIDTH:2.93 m · LENGTH:1.83 m
AREA:5.37 m² · PERIMETER:9.52 m



▼ Other

Ground Floor

WIDTH:3.62 m · LENGTH:8.15 m
AREA:22.85 m² · PERIMETER:23.55 m

