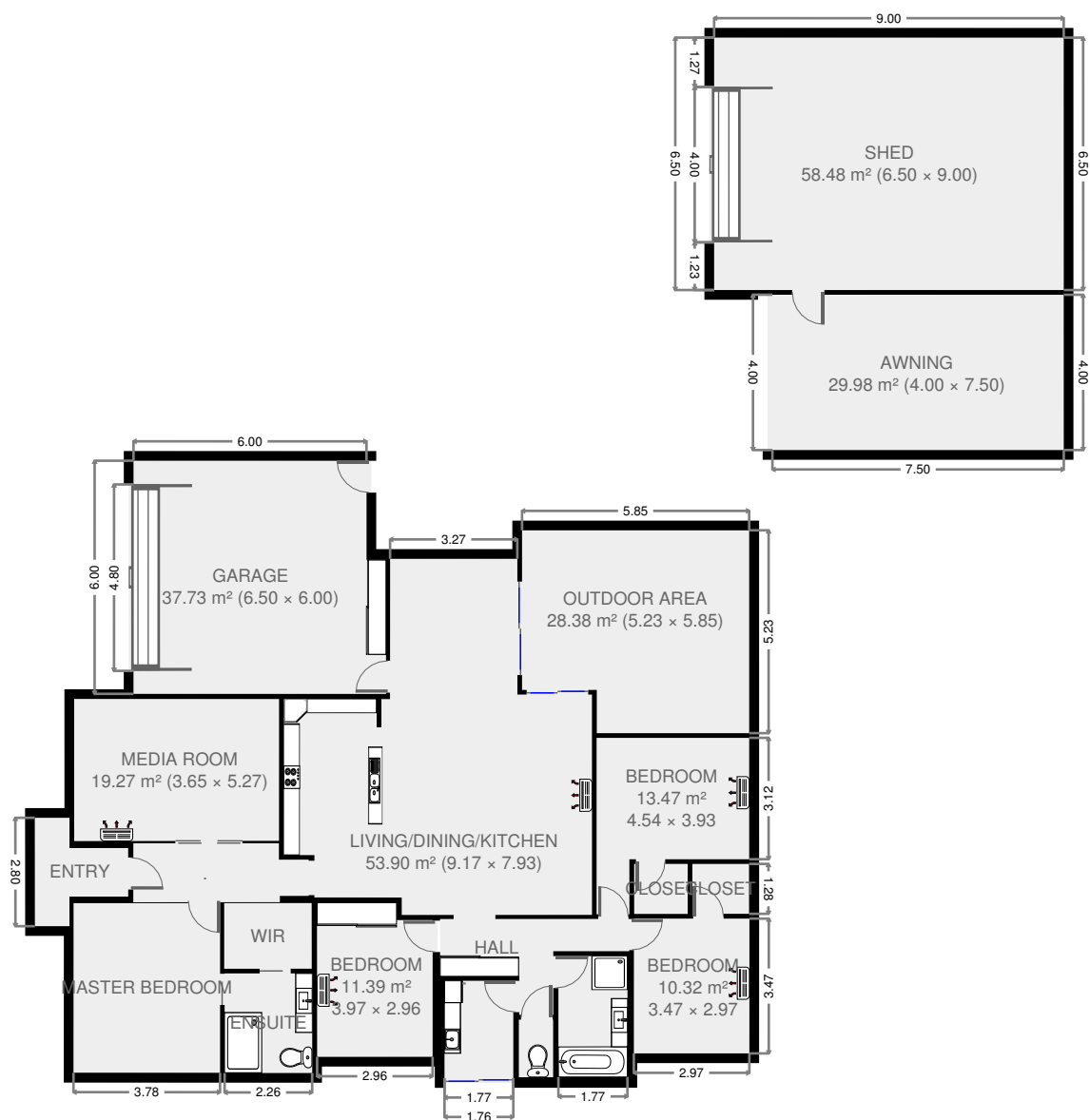


Ground Floor

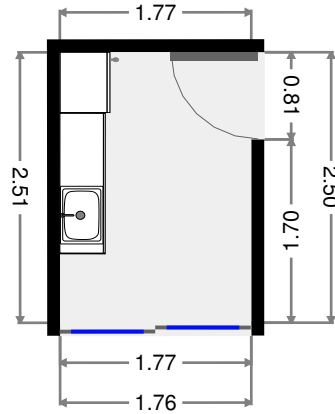
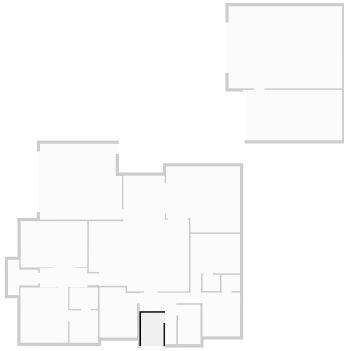


89 Bramble Street

THIS FLOORPLAN IS PROVIDED WITHOUT WARRANTY OF ANY KIND. SENSOPIA DISCLAIMS ANY WARRANTY INCLUDING, WITHOUT LIMITATION, SATISFACTORY QUALITY OR ACCURACY OF DIMENSIONS.

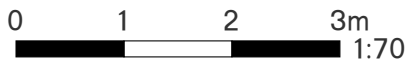
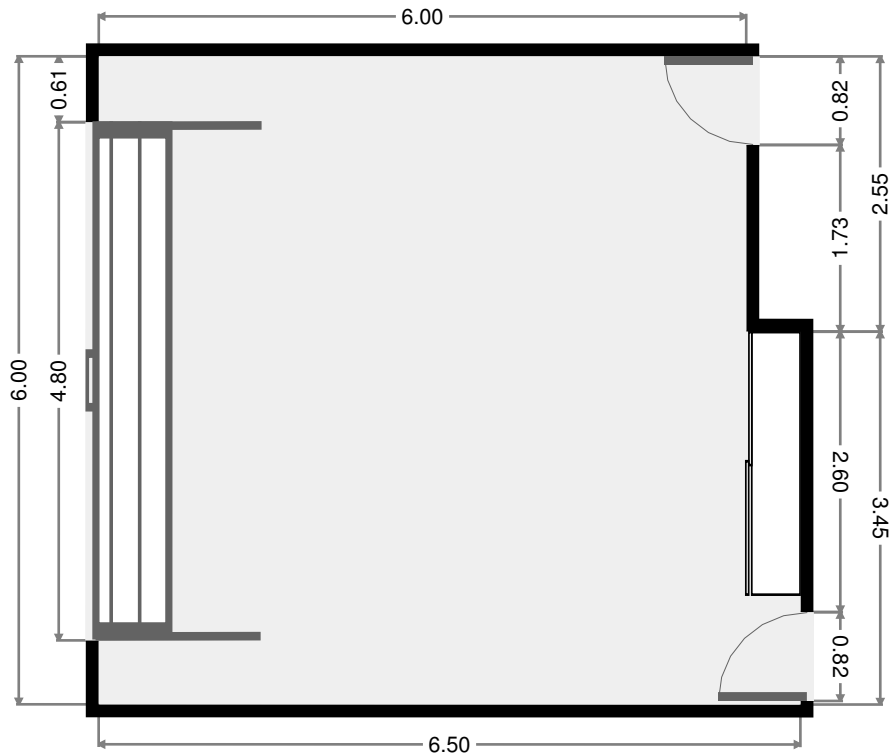
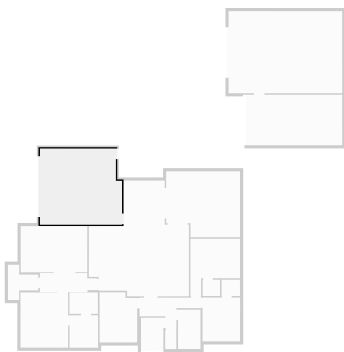
Laundry Room

Width: 1.76 m
 Length: 2.50 m
 Area: 4.44 m²
 Perimeter: 8.55 m



Garage

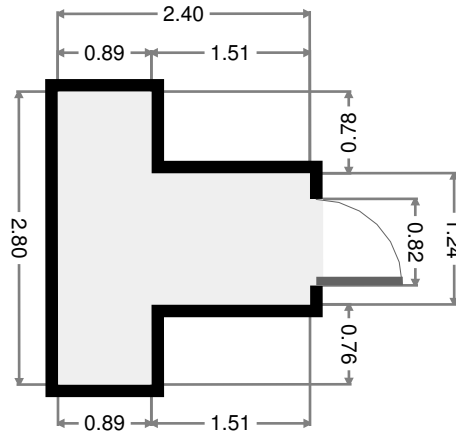
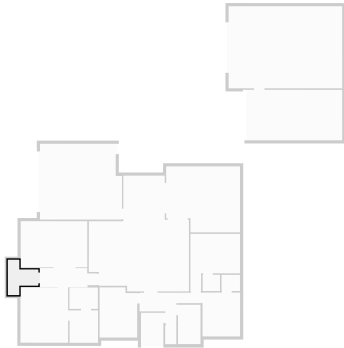
Width: 6.00 m
 Length: 6.50 m
 Area: 37.73 m²
 Perimeter: 25.00 m



THIS FLOORPLAN IS PROVIDED WITHOUT WARRANTY OF ANY KIND. SENSOPIA DISCLAIMS ANY WARRANTY INCLUDING, WITHOUT LIMITATION, SATISFACTORY QUALITY OR ACCURACY OF DIMENSIONS.

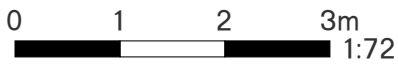
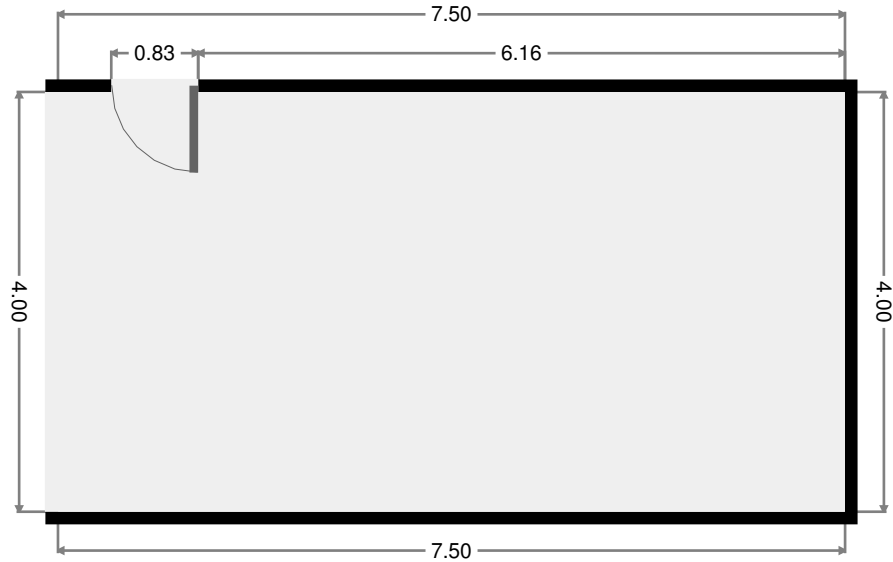
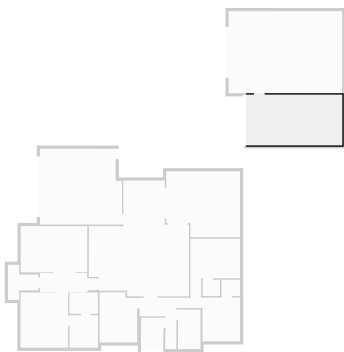
Entry

Width: 2.40 m
 Length: 2.80 m
 Area: 4.38 m²
 Perimeter: 10.39 m



Awning

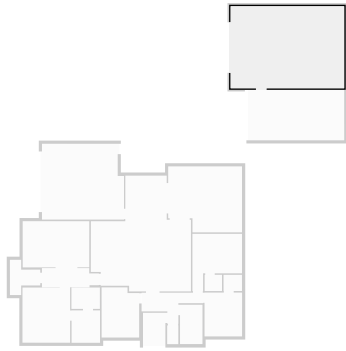
Width: 4.00 m
 Length: 7.50 m
 Area: 29.98 m²
 Perimeter: 22.99 m



THIS FLOORPLAN IS PROVIDED WITHOUT WARRANTY OF ANY KIND. SENSOPIA DISCLAIMS ANY WARRANTY INCLUDING, WITHOUT LIMITATION, SATISFACTORY QUALITY OR ACCURACY OF DIMENSIONS.

Shed

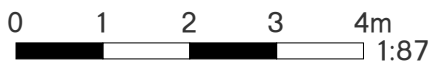
Width: 6.50 m
Length: 9.00 m
Area: 58.48 m²
Perimeter: 30.99 m



Shed

3.2 Metre high Roller Door

THIS FLOORPLAN IS PROVIDED WITHOUT WARRANTY OF ANY KIND. SENSOPIA DISCLAIMS ANY WARRANTY INCLUDING, WITHOUT LIMITATION, SATISFACTORY QUALITY OR ACCURACY OF DIMENSIONS.

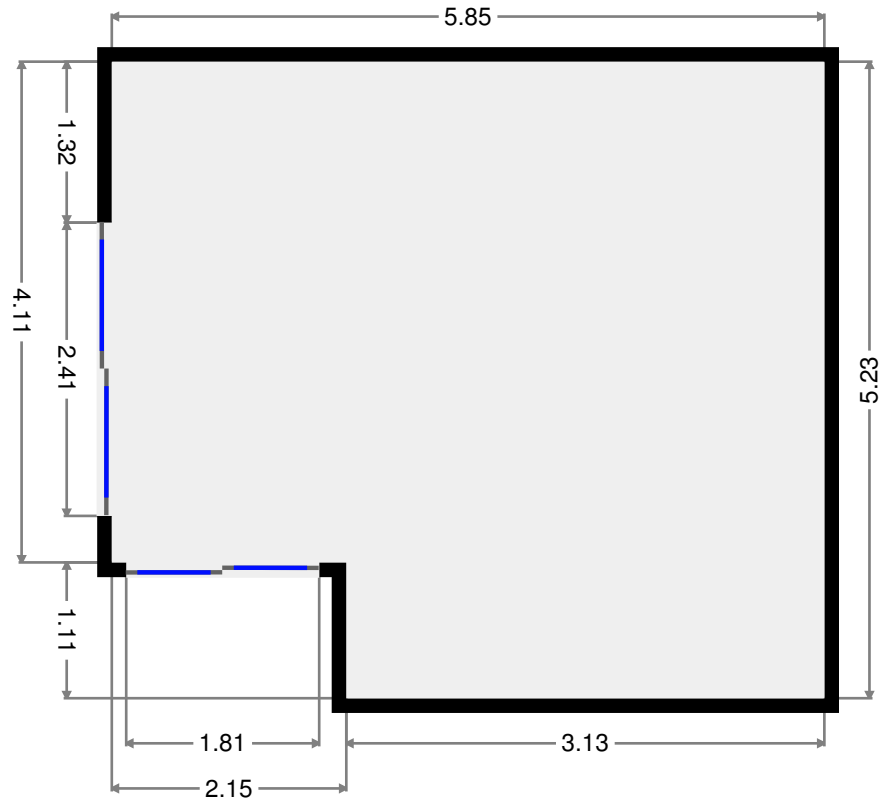
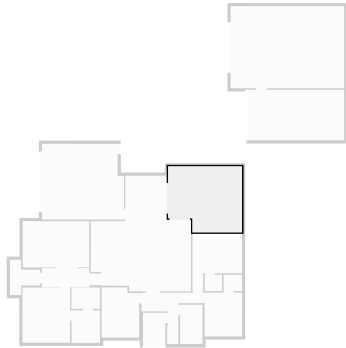


89 Bramble Street

2017-05-11

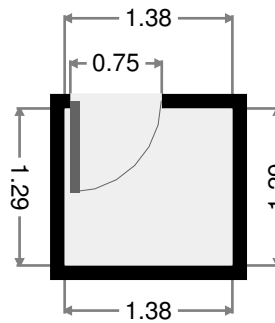
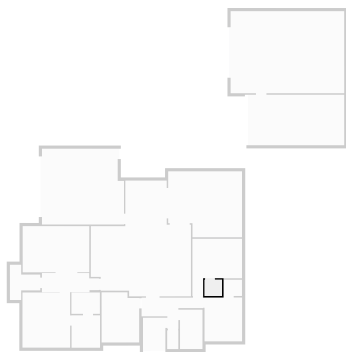
Outdoor Area

Width: 5.23 m
 Length: 5.85 m
 Area: 28.38 m²
 Perimeter: 22.14 m

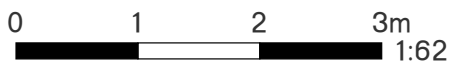


Closet

Width: 1.29 m
 Length: 1.38 m
 Area: 1.77 m²
 Perimeter: 5.33 m



THIS FLOORPLAN IS PROVIDED WITHOUT WARRANTY OF ANY KIND. SENSOPIA DISCLAIMS ANY WARRANTY INCLUDING, WITHOUT LIMITATION, SATISFACTORY QUALITY OR ACCURACY OF DIMENSIONS.

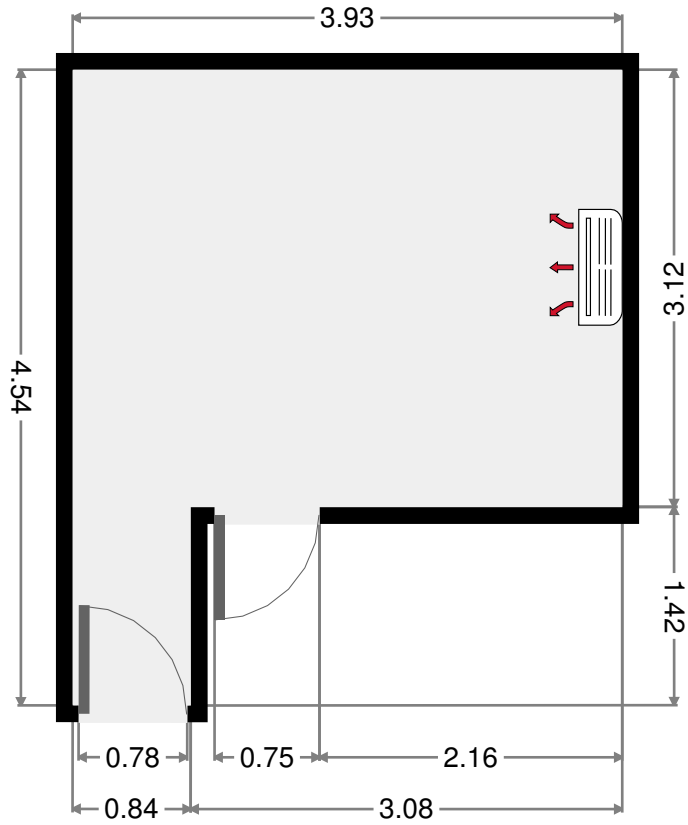
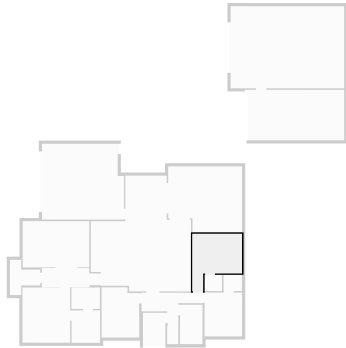


89 Bramble Street

2017-05-11

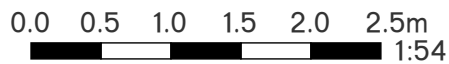
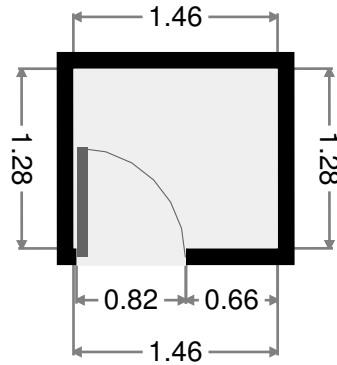
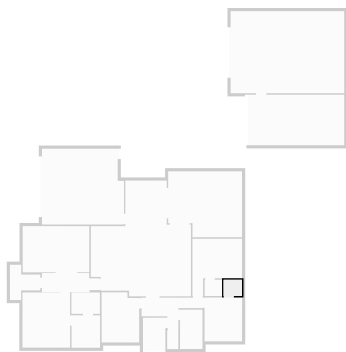
Bedroom

Width: 3.93 m
 Length: 4.54 m
 Area: 13.47 m²
 Perimeter: 16.94 m



Closet

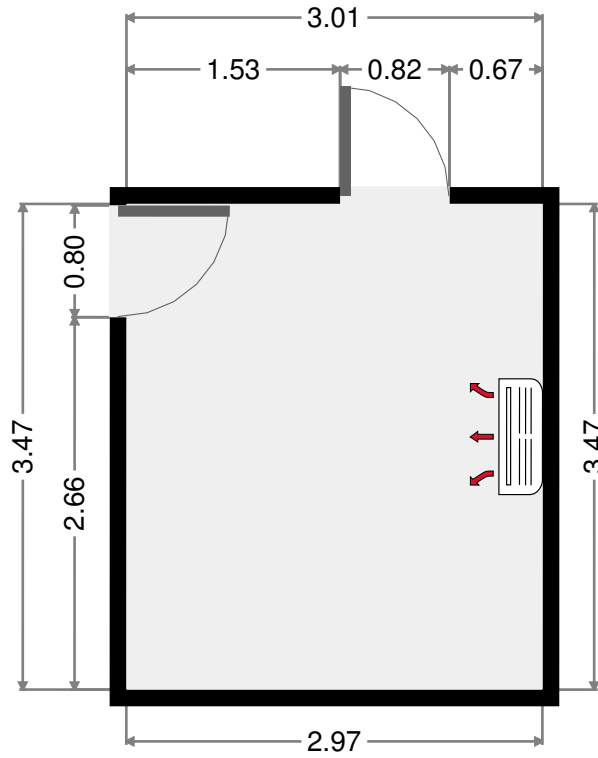
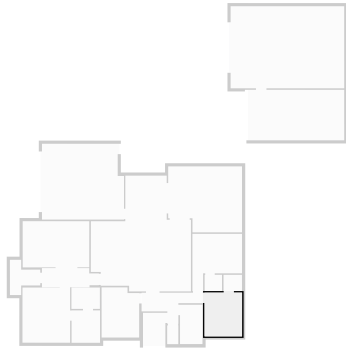
Width: 1.28 m
 Length: 1.46 m
 Area: 1.87 m²
 Perimeter: 5.49 m



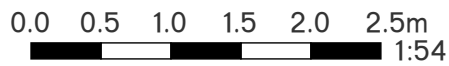
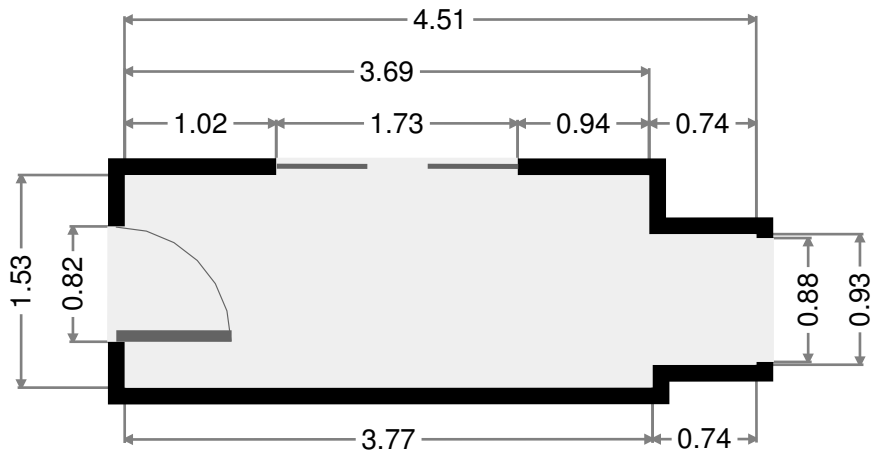
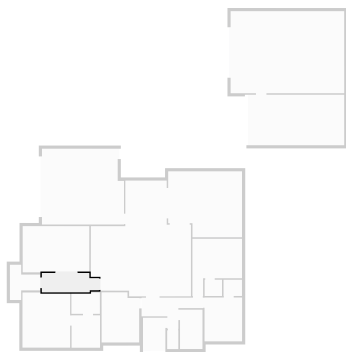
THIS FLOORPLAN IS PROVIDED WITHOUT WARRANTY OF ANY KIND. SENSOPIA DISCLAIMS ANY WARRANTY INCLUDING, WITHOUT LIMITATION, SATISFACTORY QUALITY OR ACCURACY OF DIMENSIONS.

Bedroom

Width: 2.97 m
 Length: 3.47 m
 Area: 10.32 m²
 Perimeter: 12.89 m



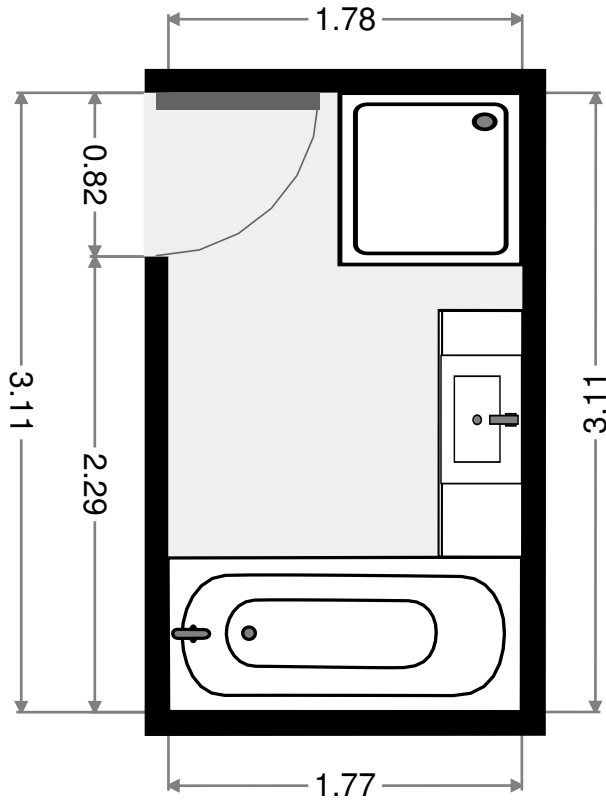
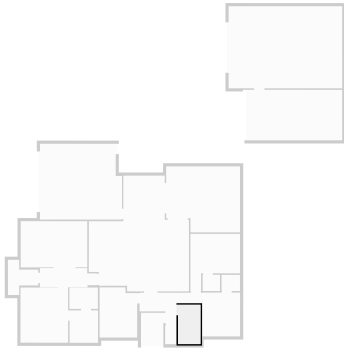
Width: 1.53 m
 Length: 4.51 m
 Area: 6.41 m²
 Perimeter: 12.06 m



THIS FLOORPLAN IS PROVIDED WITHOUT WARRANTY OF ANY KIND. SENSOPIA DISCLAIMS ANY WARRANTY INCLUDING, WITHOUT LIMITATION, SATISFACTORY QUALITY OR ACCURACY OF DIMENSIONS.

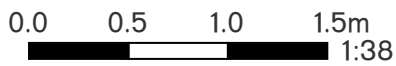
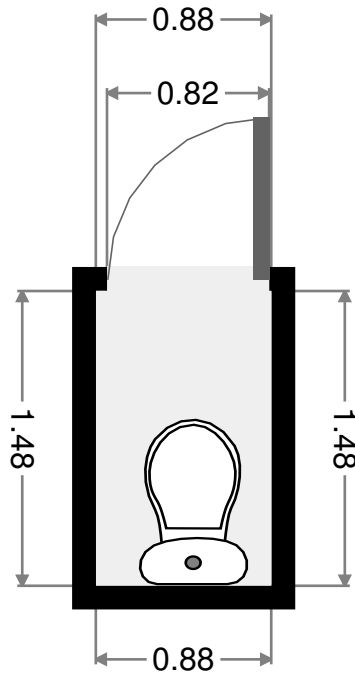
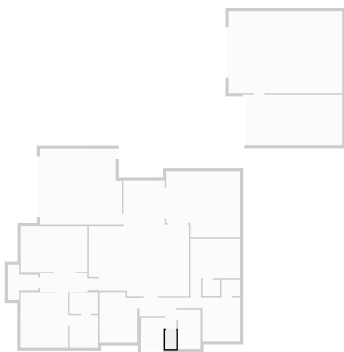
Bathroom

Width: 1.77 m
 Length: 3.11 m
 Area: 5.54 m²
 Perimeter: 9.78 m



Toilet

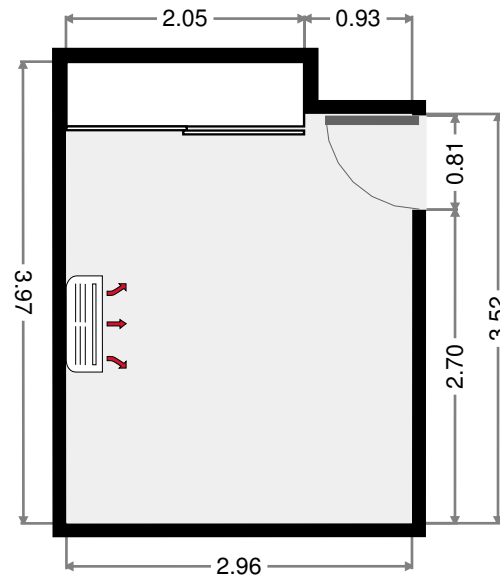
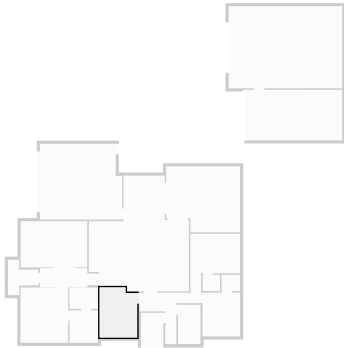
Width: 0.88 m
 Length: 1.48 m
 Area: 1.31 m²
 Perimeter: 4.73 m



THIS FLOORPLAN IS PROVIDED WITHOUT WARRANTY OF ANY KIND. SENSOPIA DISCLAIMS ANY WARRANTY INCLUDING, WITHOUT LIMITATION, SATISFACTORY QUALITY OR ACCURACY OF DIMENSIONS.

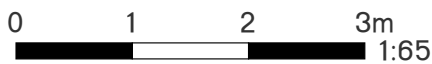
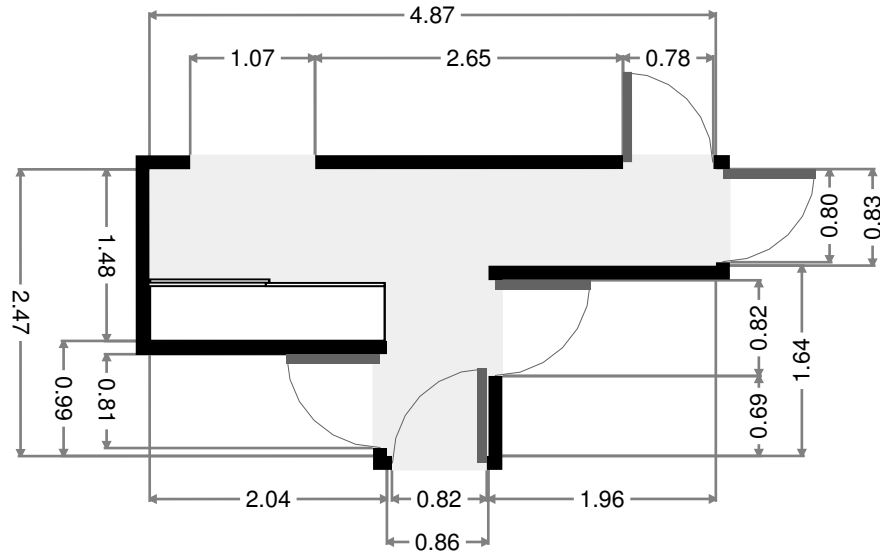
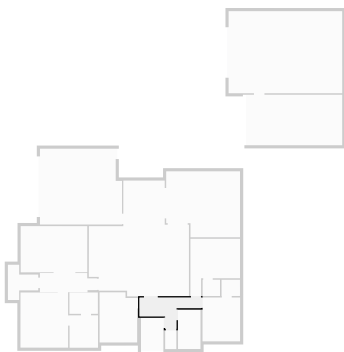
Bedroom

Width: 2.96 m
 Length: 3.97 m
 Area: 11.39 m²
 Perimeter: 13.89 m



Hall

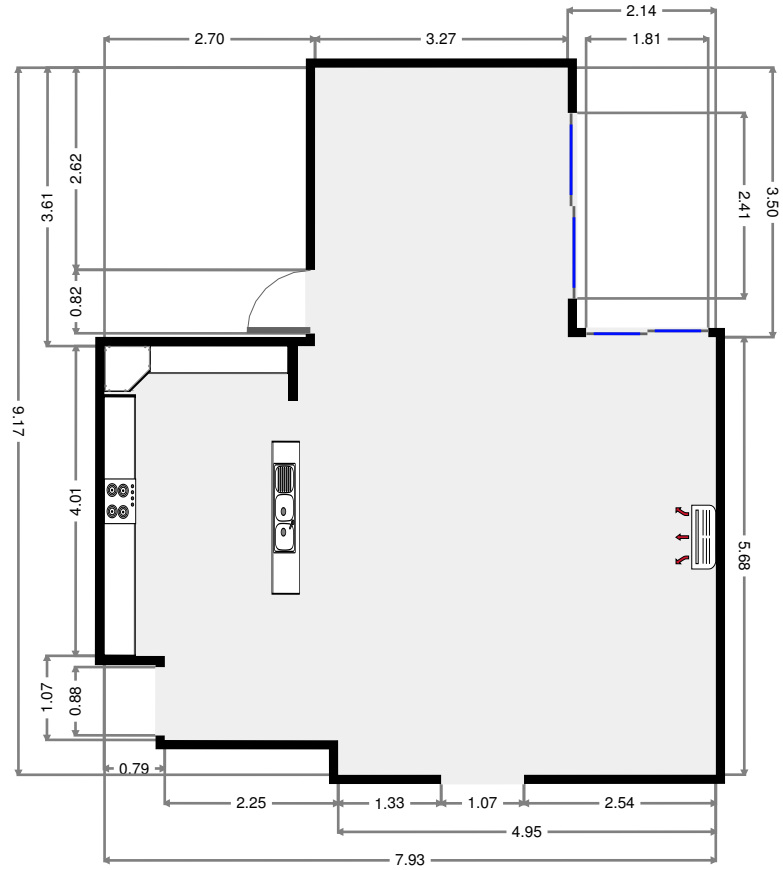
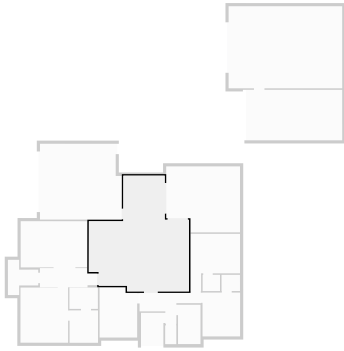
Width: 2.47 m
 Length: 4.87 m
 Area: 6.79 m²
 Perimeter: 14.67 m



THIS FLOORPLAN IS PROVIDED WITHOUT WARRANTY OF ANY KIND. SENSOPIA DISCLAIMS ANY WARRANTY INCLUDING, WITHOUT LIMITATION, SATISFACTORY QUALITY OR ACCURACY OF DIMENSIONS.

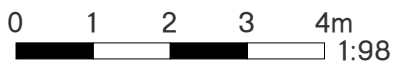
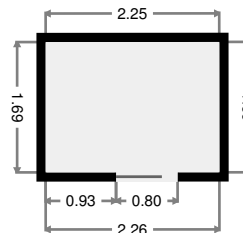
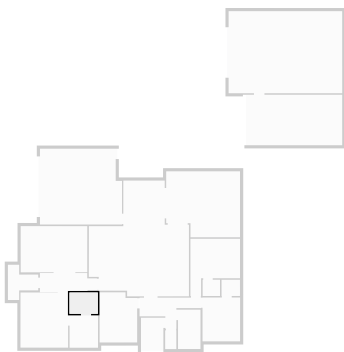
Living/Dining/Kitchen

Width: 7.93 m
 Length: 9.17 m
 Area: 53.90 m²
 Perimeter: 34.19 m



WIR

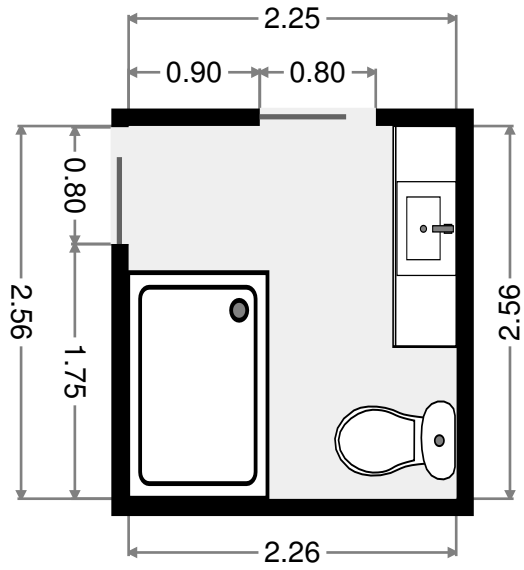
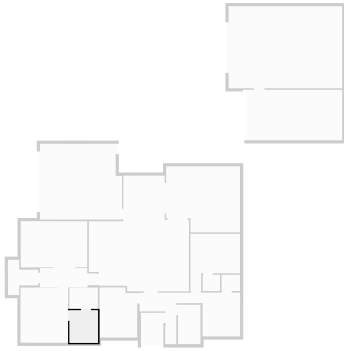
Width: 1.69 m
 Length: 2.26 m
 Area: 3.81 m²
 Perimeter: 7.89 m



THIS FLOORPLAN IS PROVIDED WITHOUT WARRANTY OF ANY KIND. SENSOPIA DISCLAIMS ANY WARRANTY INCLUDING, WITHOUT LIMITATION, SATISFACTORY QUALITY OR ACCURACY OF DIMENSIONS.

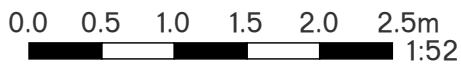
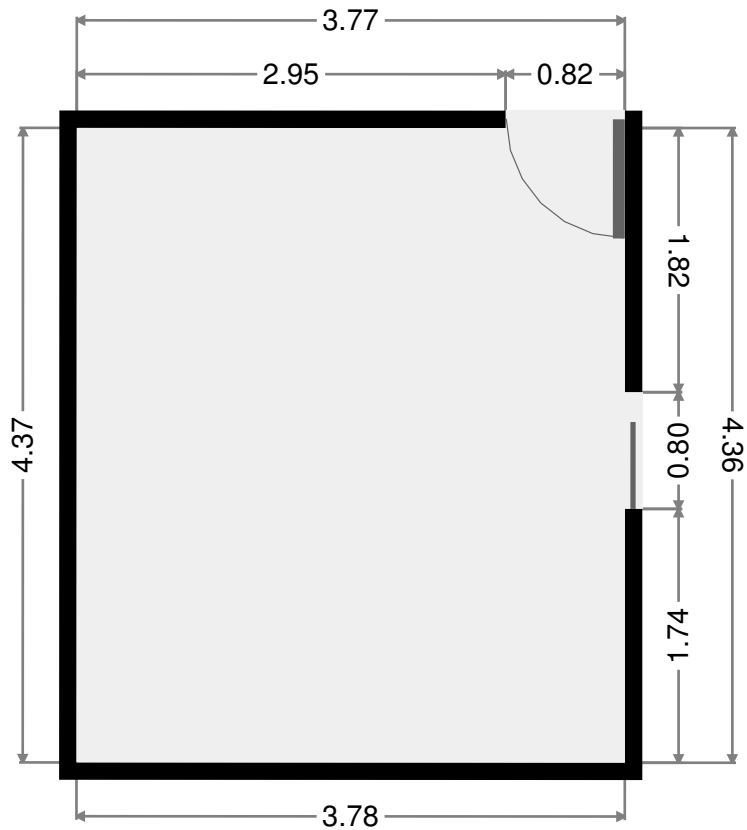
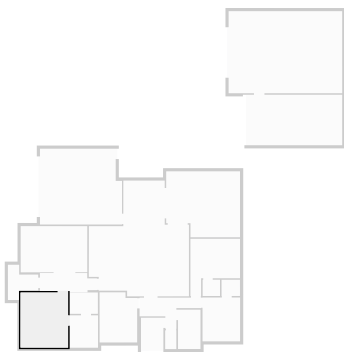
Ensuite

Width: 2.26 m
 Length: 2.56 m
 Area: 5.78 m²
 Perimeter: 9.64 m



Master Bedroom

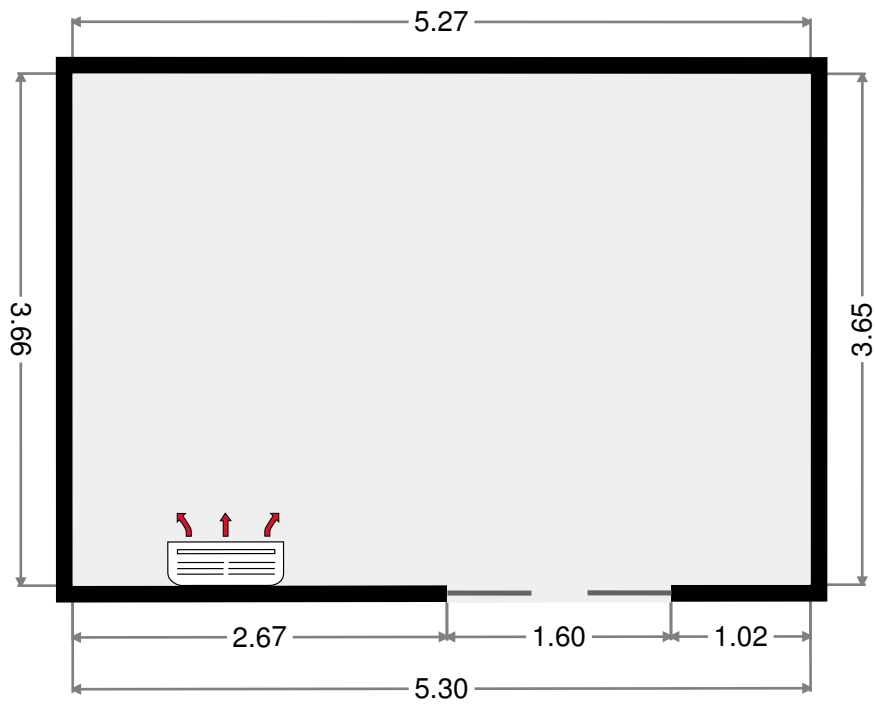
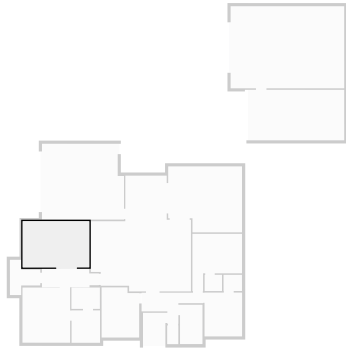
Width: 3.78 m
 Length: 4.37 m
 Area: 16.47 m²
 Perimeter: 16.28 m



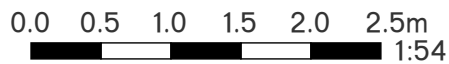
THIS FLOORPLAN IS PROVIDED WITHOUT WARRANTY OF ANY KIND. SENSOPIA DISCLAIMS ANY WARRANTY INCLUDING, WITHOUT LIMITATION, SATISFACTORY QUALITY OR ACCURACY OF DIMENSIONS.

Media Room

Width: 3.65 m
Length: 5.27 m
Area: 19.27 m²
Perimeter: 17.86 m



THIS FLOORPLAN IS PROVIDED WITHOUT WARRANTY OF ANY KIND. SENSOPIA DISCLAIMS ANY WARRANTY INCLUDING, WITHOUT LIMITATION, SATISFACTORY QUALITY OR ACCURACY OF DIMENSIONS.



89 Bramble Street

2017-05-11