

84 Stenlake Avenue

SUBMITTED BY

Ray White Rockhampton Casey
stockers@cqoz.com

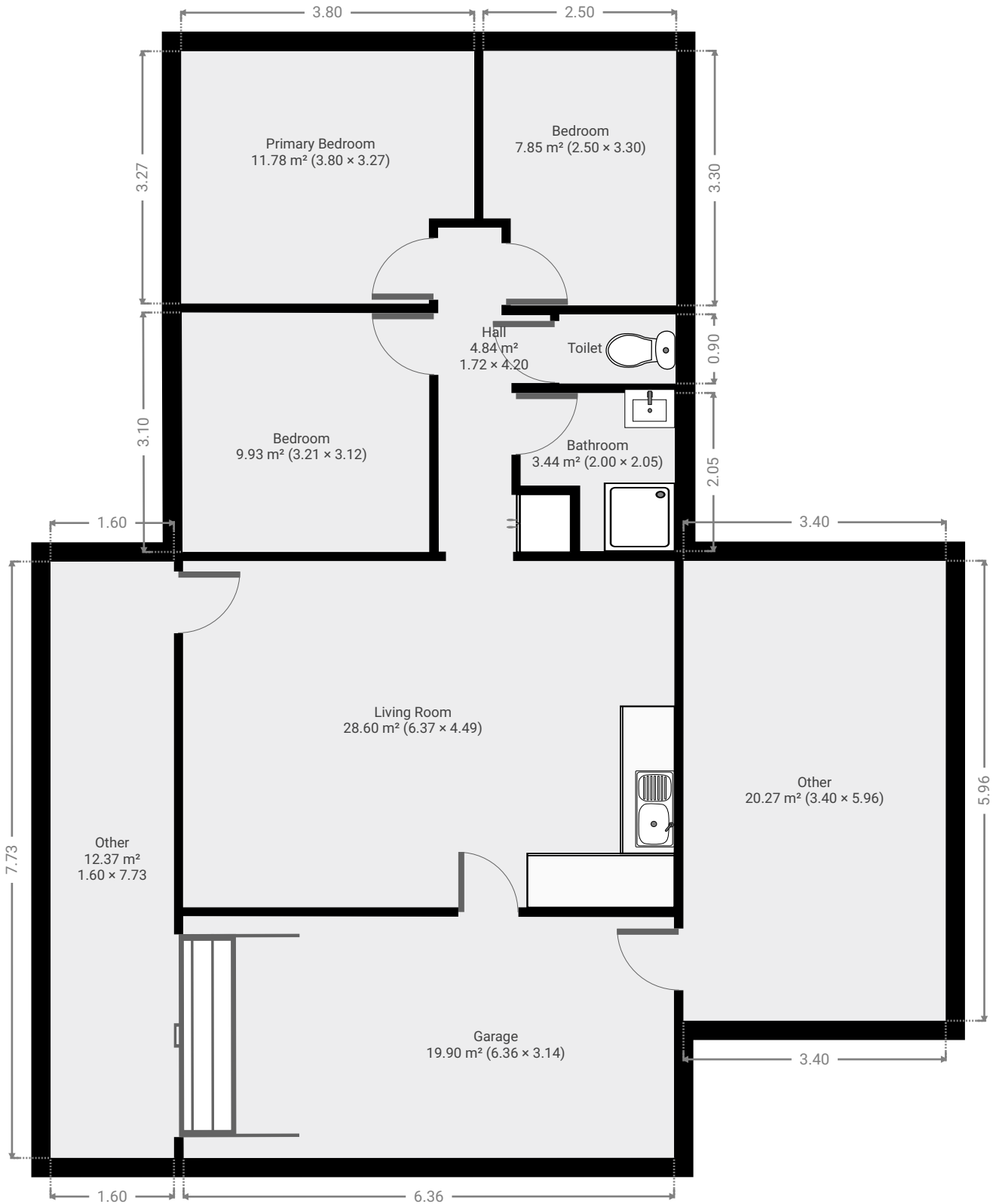
CREATED ON

2022-04-06

Floors

1

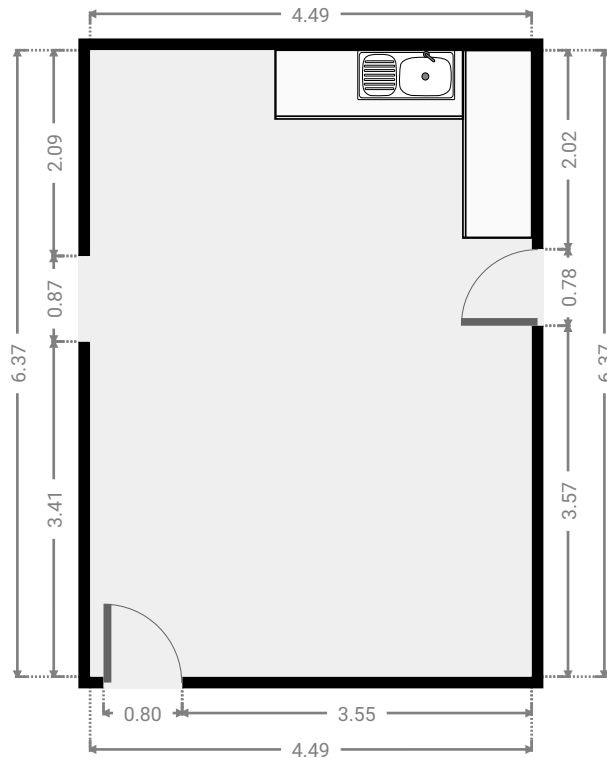
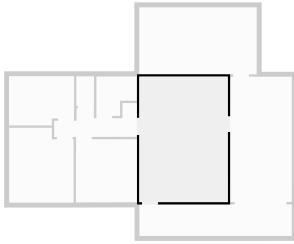
▼ Ground Floor



FLOORS: 1

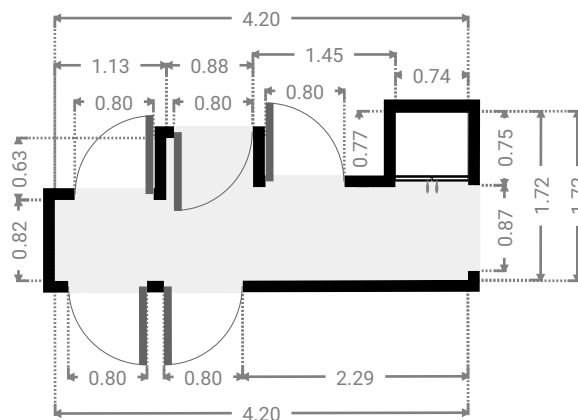
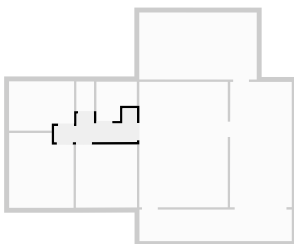
▼ Living Room
Ground Floor

WIDTH: 4.49 m • LENGTH: 6.37 m
AREA: 28.60 m² • PERIMETER: 21.72 m



▼ Hall
Ground Floor

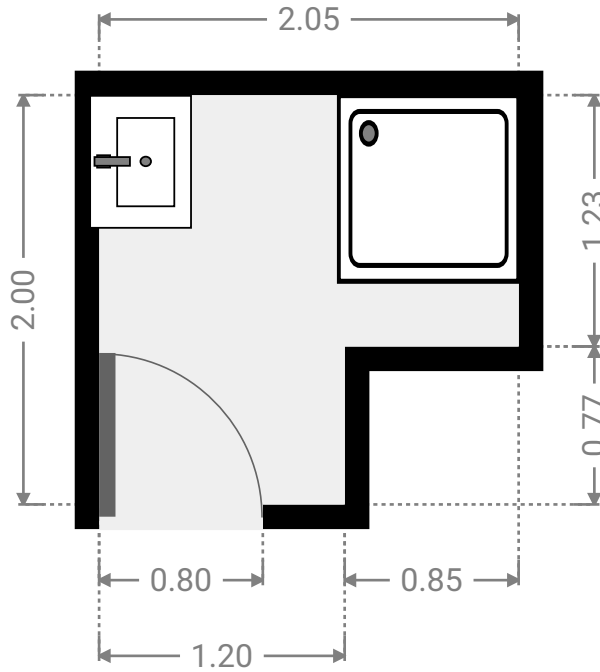
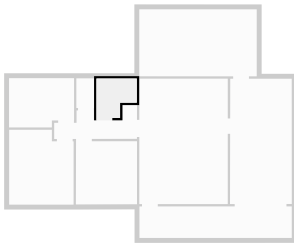
WIDTH: 4.20 m • LENGTH: 1.72 m
AREA: 4.84 m² • PERIMETER: 12.84 m



FLOORS: 1

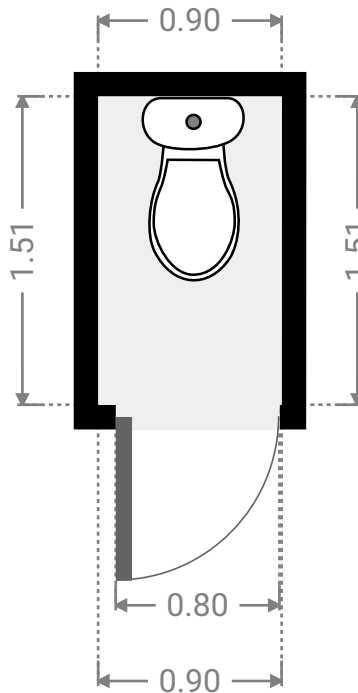
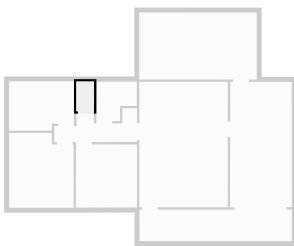
▼ **Bathroom**
Ground Floor

WIDTH: 2.05 m • LENGTH: 2.00 m
AREA: 3.44 m² • PERIMETER: 8.10 m



▼ **Toilet**
Ground Floor

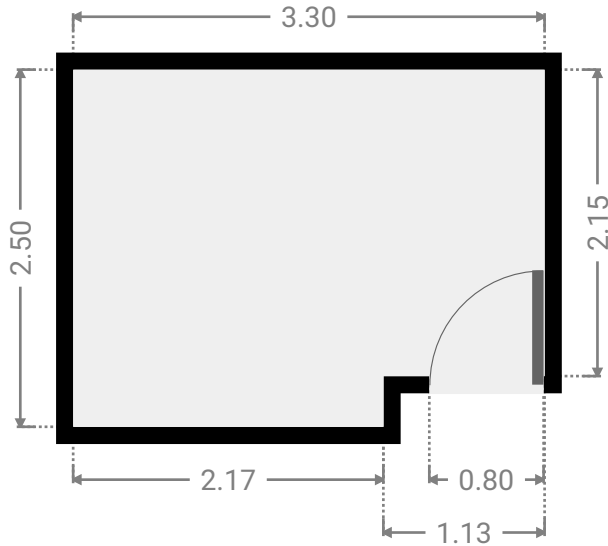
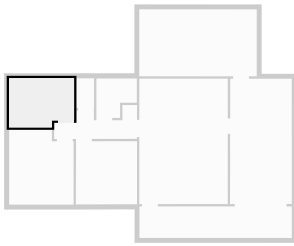
WIDTH: 0.90 m • LENGTH: 1.51 m
AREA: 1.35 m² • PERIMETER: 4.81 m



FLOORS: 1

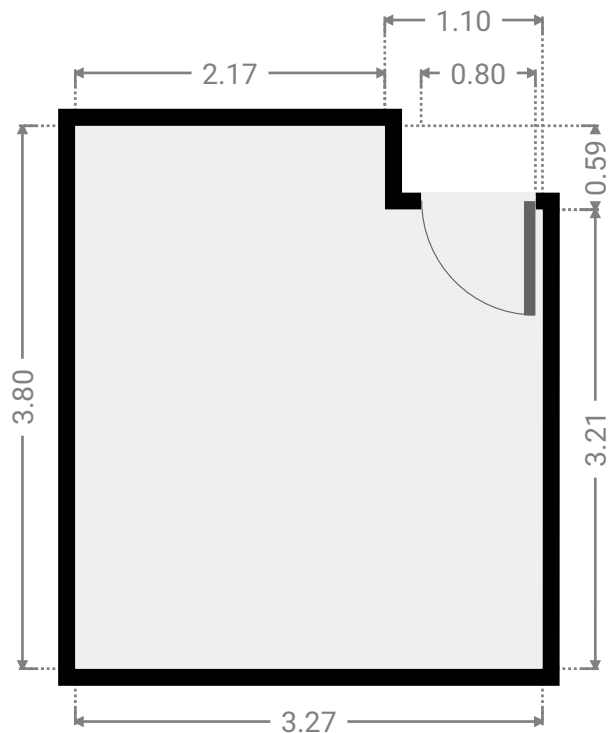
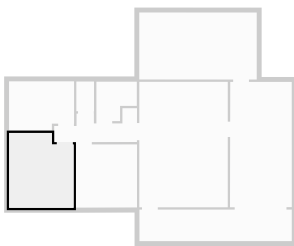
▼ **Bedroom**
Ground Floor

WIDTH: 3.30 m • LENGTH: 2.50 m
AREA: 7.85 m² • PERIMETER: 11.60 m



▼ **Primary Bedroom**
Ground Floor

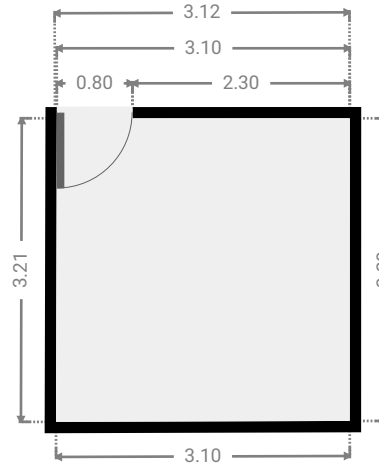
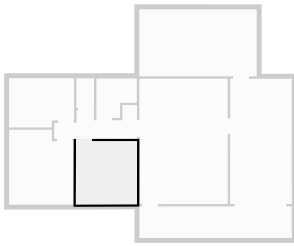
WIDTH: 3.27 m • LENGTH: 3.80 m
AREA: 11.78 m² • PERIMETER: 14.14 m



FLOORS: 1

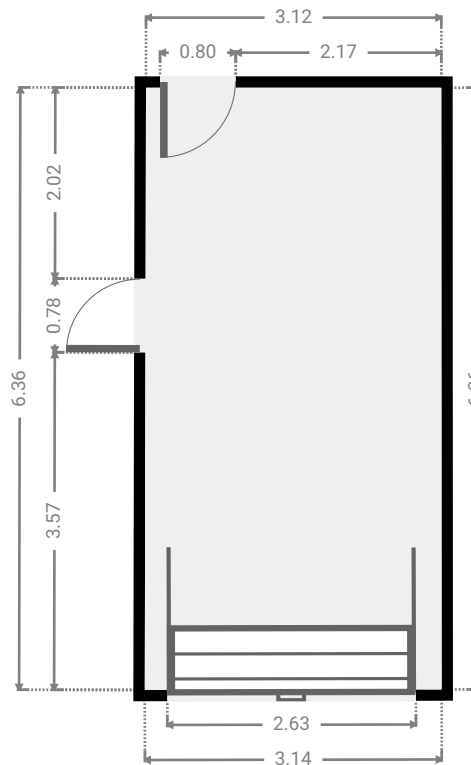
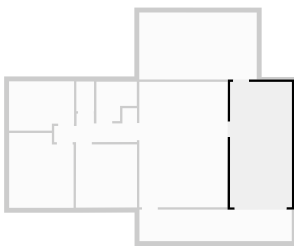
▼ **Bedroom**
Ground Floor

WIDTH: 3.12 m • LENGTH: 3.21 m
AREA: 9.93 m² • PERIMETER: 12.60 m



▼ **Garage**
Ground Floor

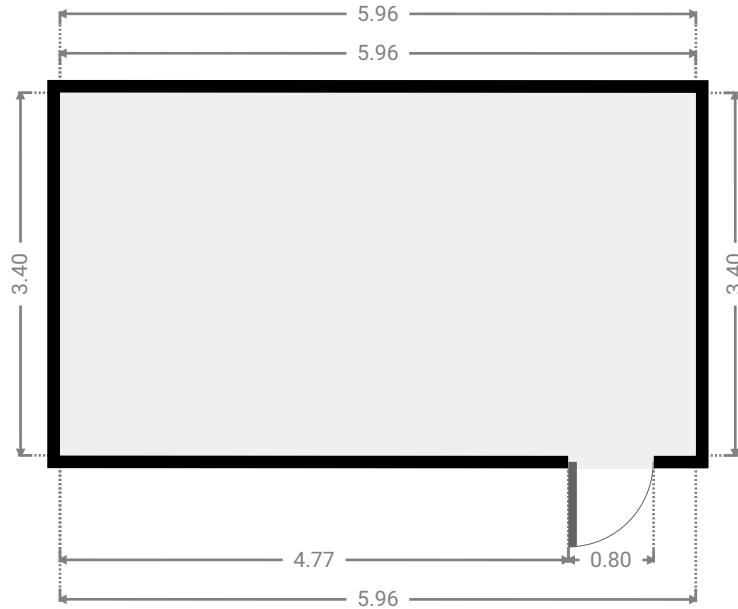
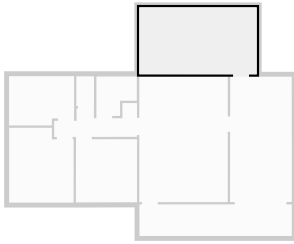
WIDTH: 3.14 m • LENGTH: 6.36 m
AREA: 19.90 m² • PERIMETER: 18.98 m



FLOORS: 1

▼ Other
Ground Floor

WIDTH: 5.96 m • LENGTH: 3.40 m
AREA: 20.27 m² • PERIMETER: 18.72 m



▼ Other
Ground Floor

WIDTH: 7.73 m • LENGTH: 1.60 m
AREA: 12.37 m² • PERIMETER: 18.66 m

