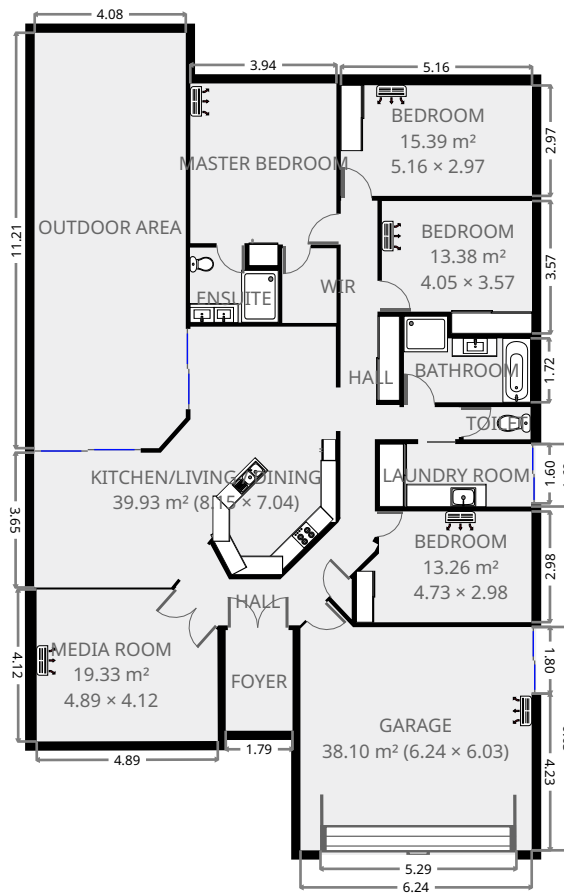
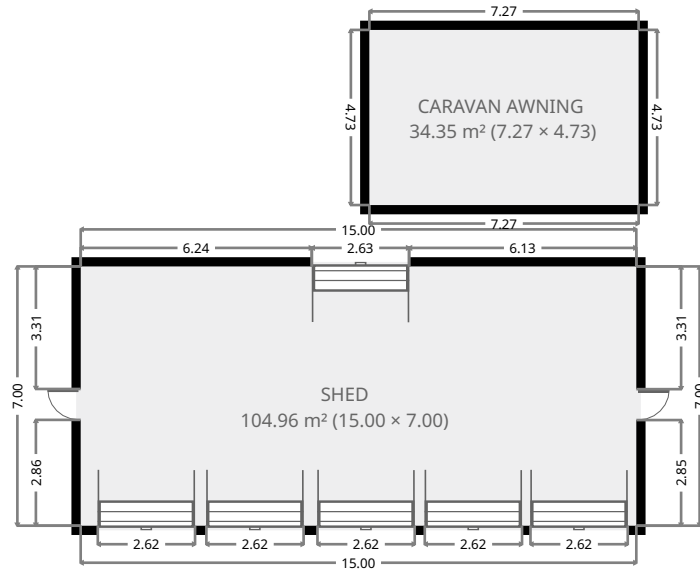


# 83 Neilsen Road

## Ground Floor

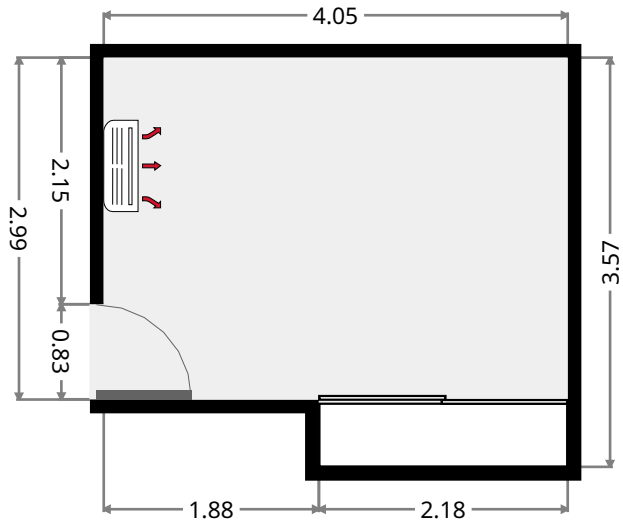
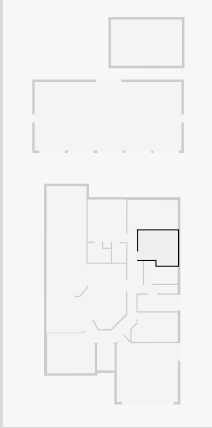


THIS FLOORPLAN IS PROVIDED WITHOUT WARRANTY OF ANY KIND. SENSOPIA DISCLAIMS ANY WARRANTY INCLUDING, WITHOUT LIMITATION, SATISFACTORY QUALITY OR ACCURACY OF DIMENSIONS.

# 83 Neilsen Road

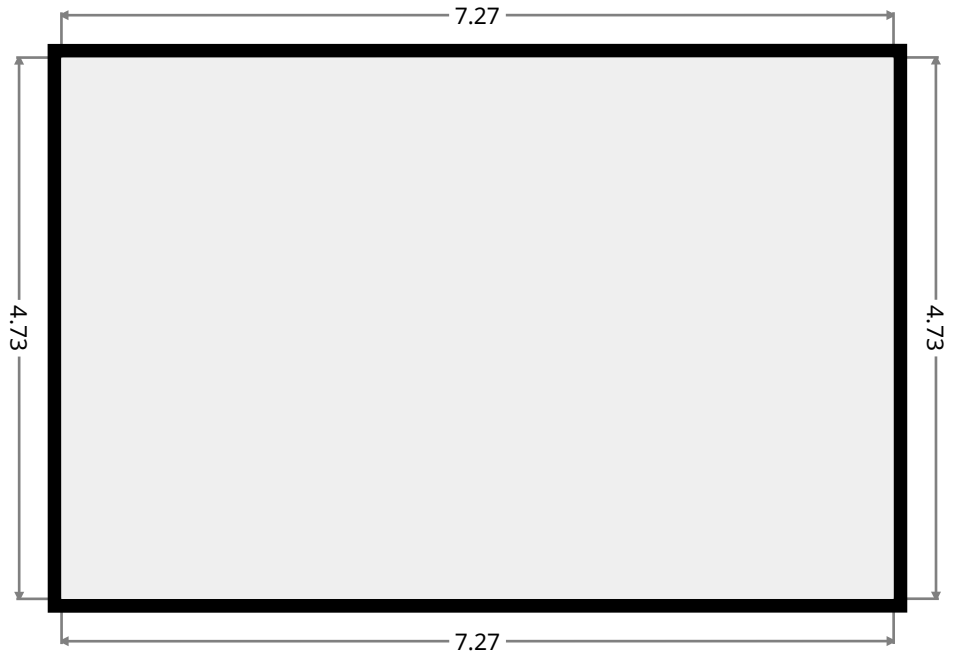
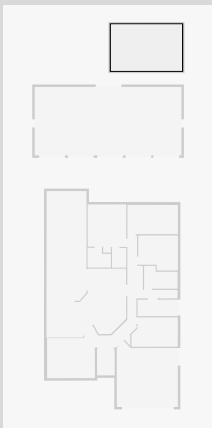
## Bedroom

Width: 3.57 m  
Length: 4.05 m  
Area: 13.38 m<sup>2</sup>  
Perimeter: 15.25 m



## Caravan Awning

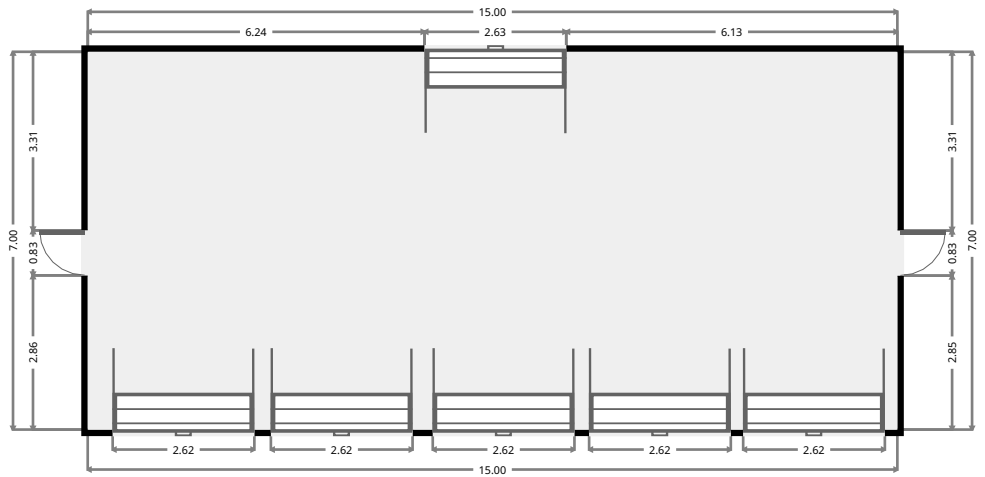
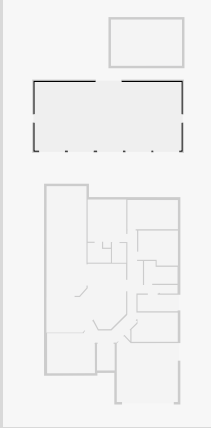
Width: 4.73 m  
Length: 7.27 m  
Area: 34.35 m<sup>2</sup>  
Perimeter: 23.99 m



# 83 Neilsen Road

## Shed

Width: 7.00 m  
Length: 15.00 m  
Area: 104.96 m<sup>2</sup>  
Perimeter: 43.99 m



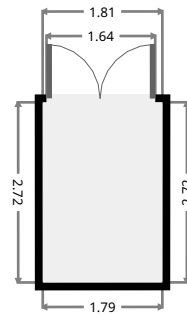
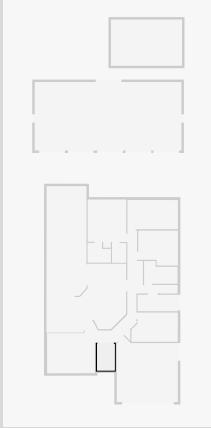
THIS FLOORPLAN IS PROVIDED WITHOUT WARRANTY OF ANY KIND. SENSOPIA DISCLAIMS ANY WARRANTY INCLUDING, WITHOUT LIMITATION, SATISFACTORY QUALITY OR ACCURACY OF DIMENSIONS.



# 83 Neilsen Road

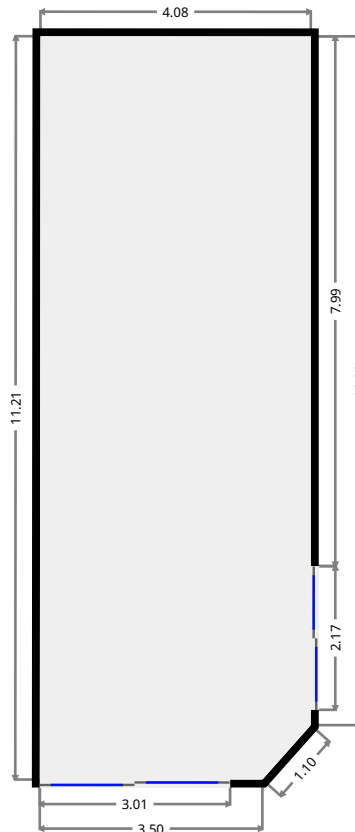
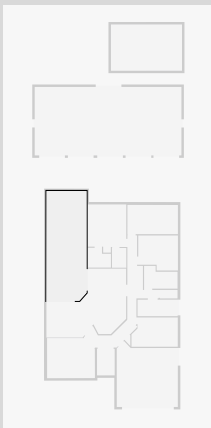
## Foyer

Width: 1.81 m  
Length: 2.72 m  
Area: 4.90 m<sup>2</sup>  
Perimeter: 9.04 m



## Outdoor Area

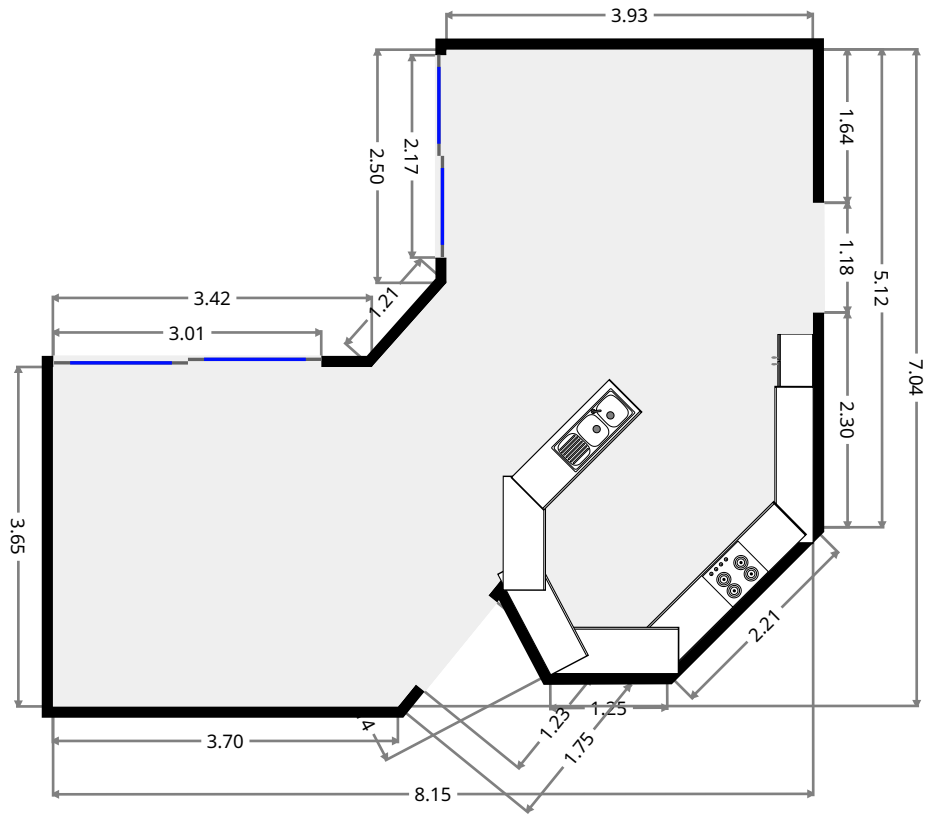
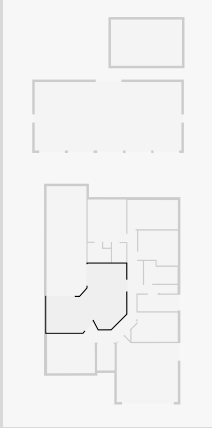
Width: 4.08 m  
Length: 11.21 m  
Area: 45.47 m<sup>2</sup>  
Perimeter: 30.14 m



# 83 Neilsen Road

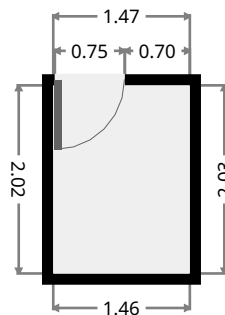
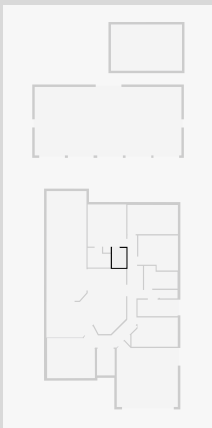
## Kitchen/Living / Dining

Width: 7.04 m  
 Length: 8.15 m  
 Area: 39.93 m<sup>2</sup>  
 Perimeter: 29.86 m



## WIR

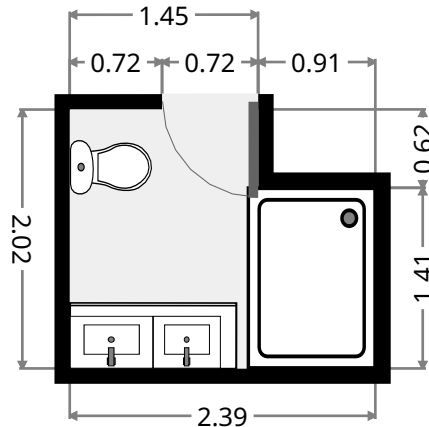
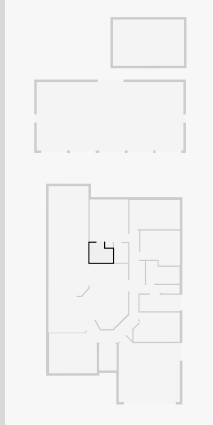
Width: 1.47 m  
 Length: 2.03 m  
 Area: 2.95 m<sup>2</sup>  
 Perimeter: 6.96 m



# 83 Neilsen Road

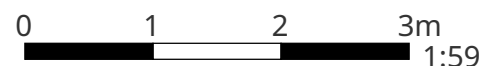
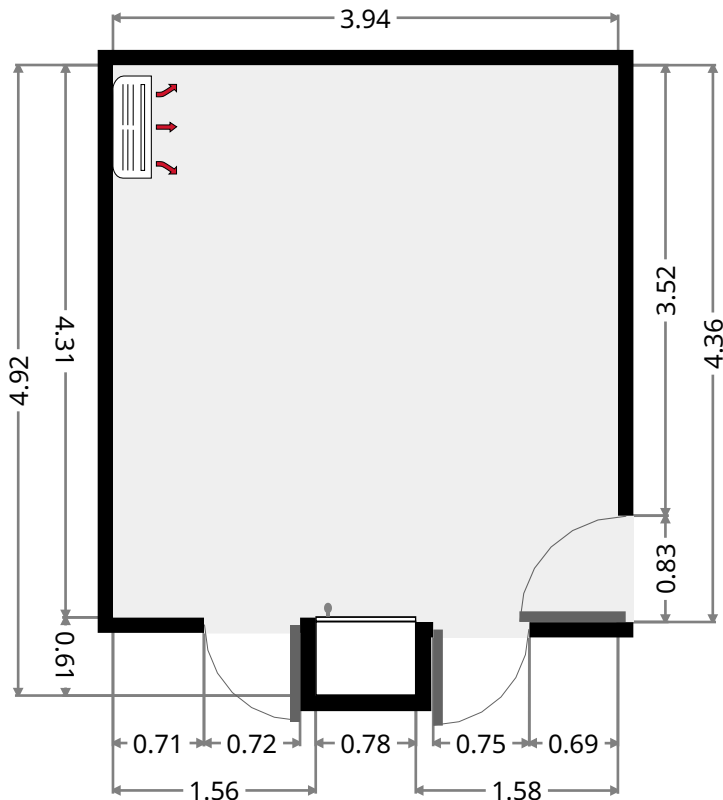
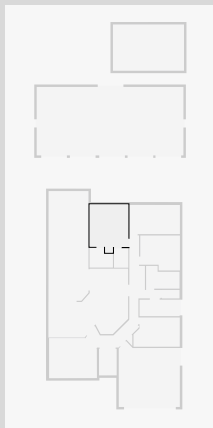
## Ensuite

Width: 2.02 m  
 Length: 2.39 m  
 Area: 4.26 m<sup>2</sup>  
 Perimeter: 8.82 m



## Master Bedroom

Width: 3.94 m  
 Length: 4.92 m  
 Area: 17.53 m<sup>2</sup>  
 Perimeter: 17.73 m

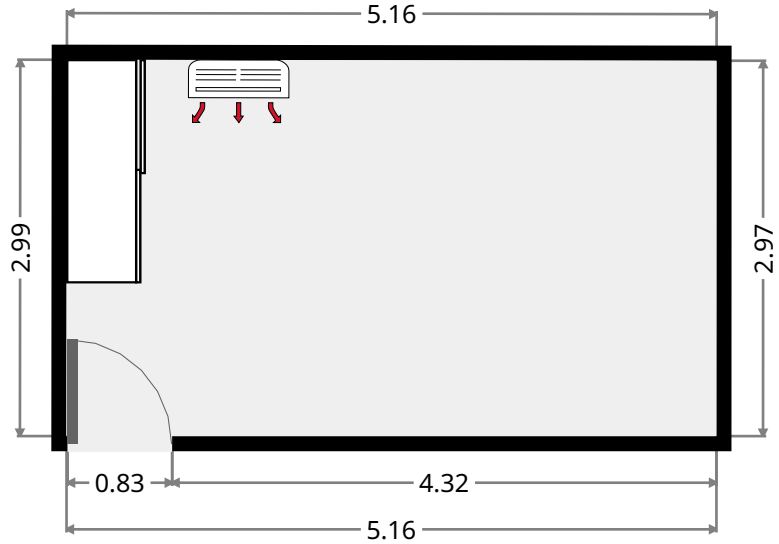
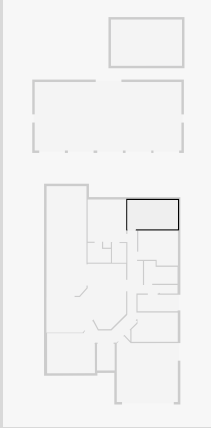


THIS FLOORPLAN IS PROVIDED WITHOUT WARRANTY OF ANY KIND. SENSOPIA DISCLAIMS ANY WARRANTY INCLUDING, WITHOUT LIMITATION, SATISFACTORY QUALITY OR ACCURACY OF DIMENSIONS.

# 83 Neilsen Road

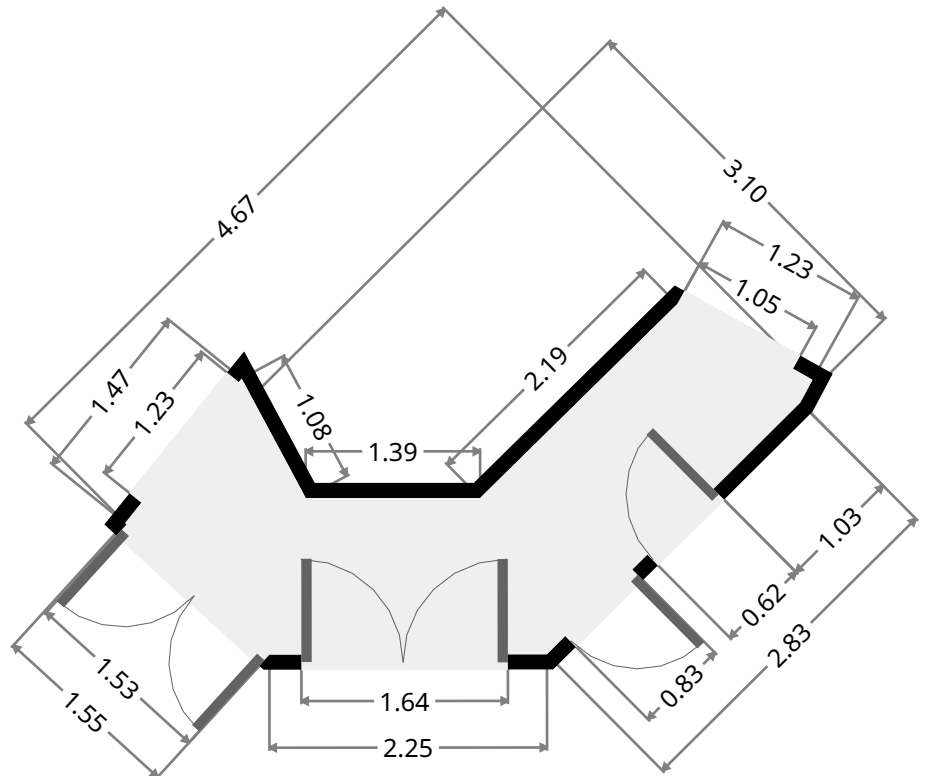
## Bedroom

Width: 2.97 m  
Length: 5.16 m  
Area: 15.39 m<sup>2</sup>  
Perimeter: 16.29 m

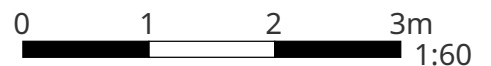


## Hall

Width: 3.10 m  
Length: 4.67 m  
Area: 7.09 m<sup>2</sup>  
Perimeter: 14.15 m



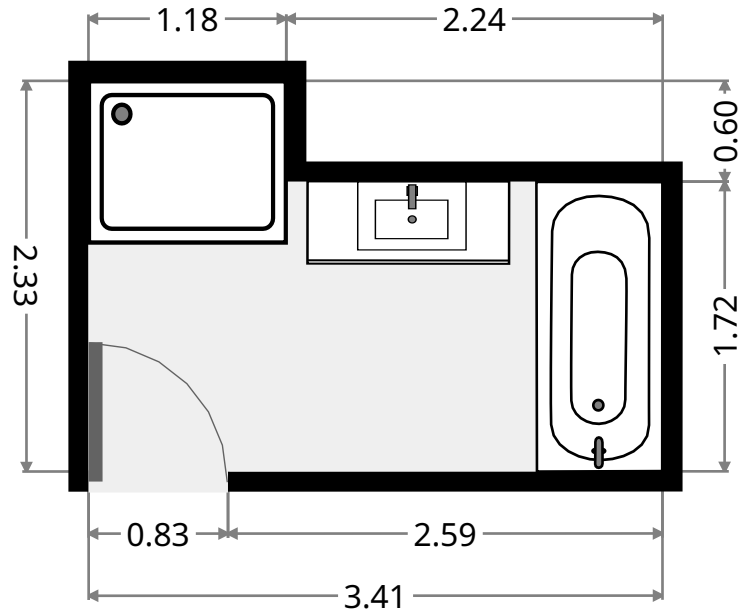
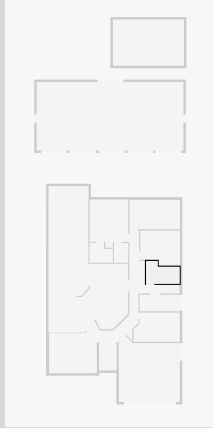
THIS FLOORPLAN IS PROVIDED WITHOUT WARRANTY OF ANY KIND. SENSOPIA DISCLAIMS ANY WARRANTY INCLUDING, WITHOUT LIMITATION, SATISFACTORY QUALITY OR ACCURACY OF DIMENSIONS.



# 83 Neilsen Road

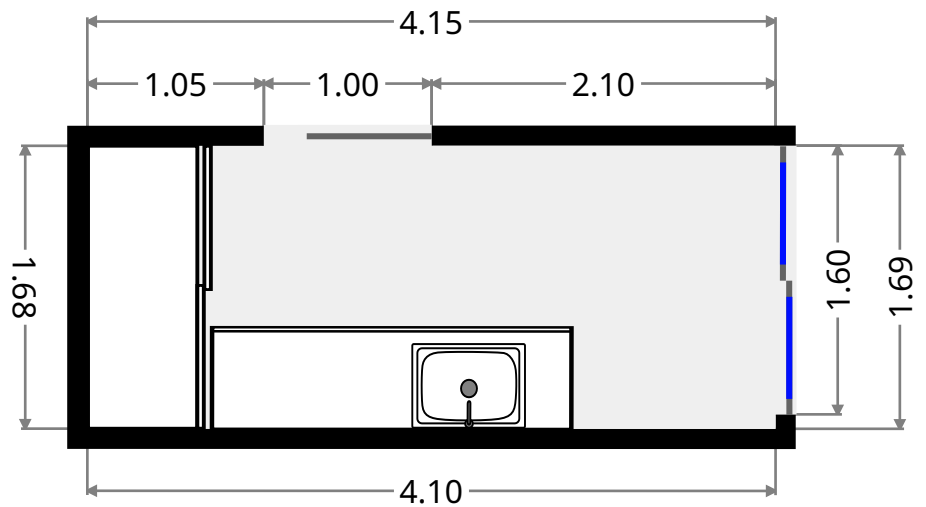
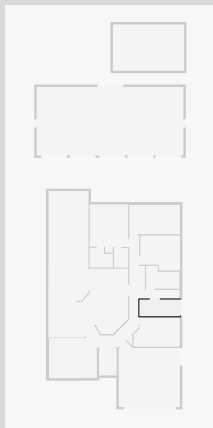
## Bathroom

Width: 2.33 m  
Length: 3.41 m  
Area: 6.60 m<sup>2</sup>  
Perimeter: 11.49 m



## Laundry Room

Width: 1.68 m  
Length: 4.10 m  
Area: 6.91 m<sup>2</sup>  
Perimeter: 11.57 m

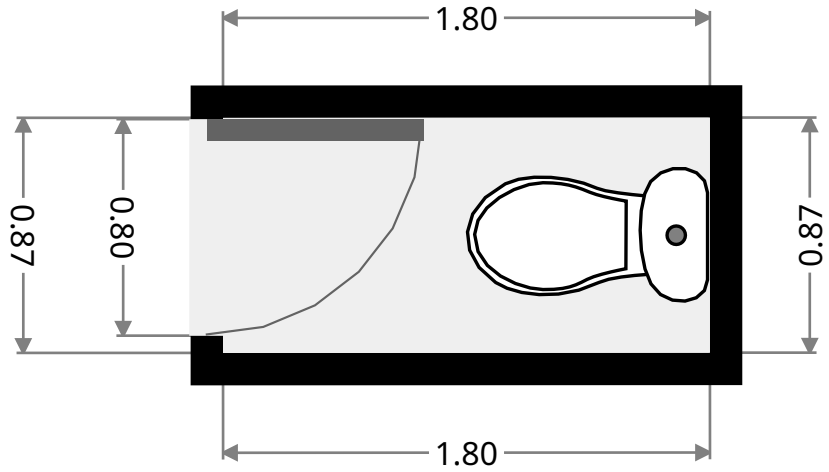
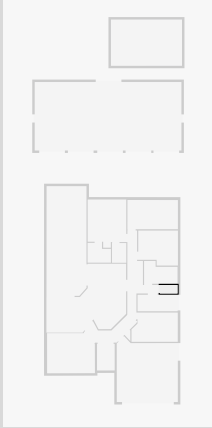




# 83 Neilsen Road

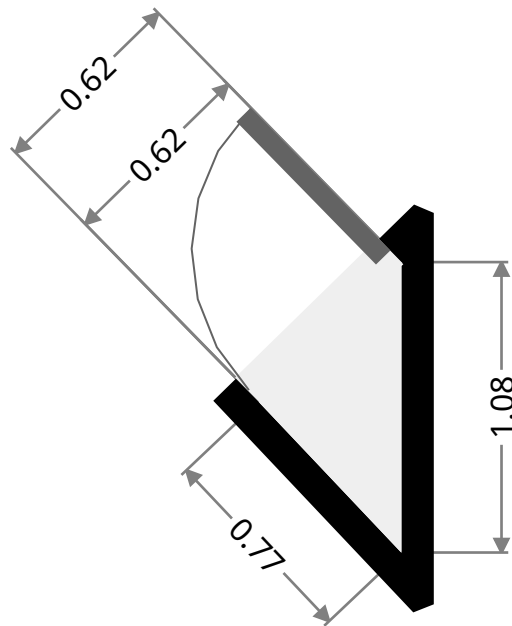
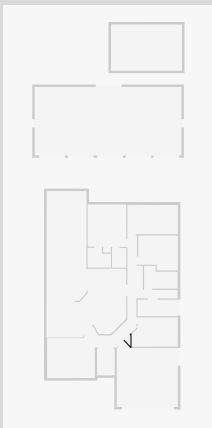
## Toilet

Width: 0.87 m  
Length: 1.80 m  
Area: 1.57 m<sup>2</sup>  
Perimeter: 5.35 m



## Closet

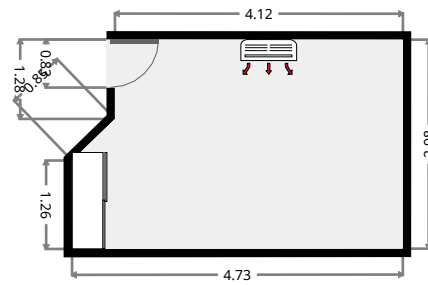
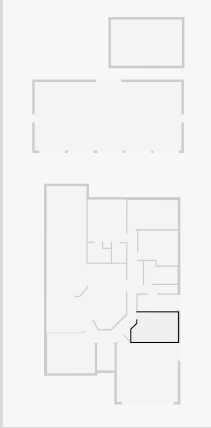
Width: 0.53 m  
Length: 1.08 m  
Area: 0.28 m<sup>2</sup>  
Perimeter: 2.59 m



# 83 Neilsen Road

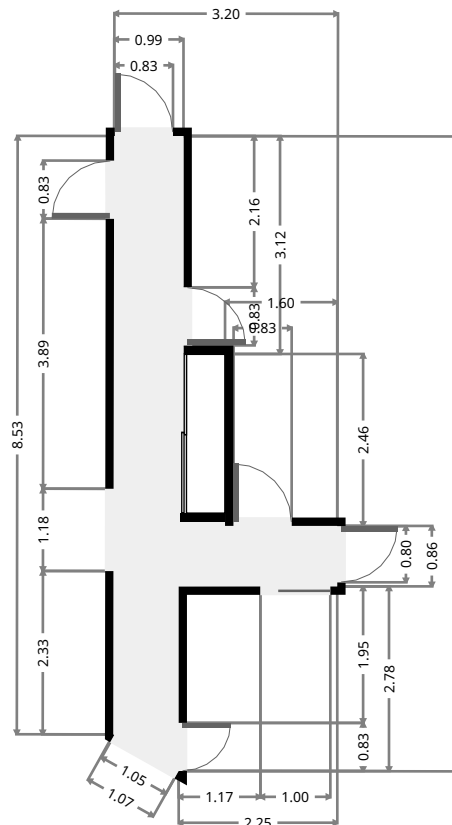
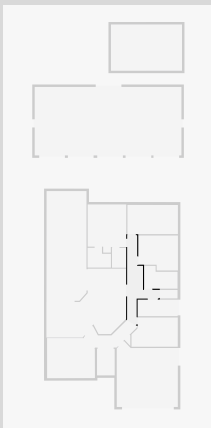
## Bedroom

Width: 2.98 m  
Length: 4.73 m  
Area: 13.26 m<sup>2</sup>  
Perimeter: 15.08 m



## Hall

Width: 3.20 m  
Length: 9.07 m  
Area: 11.97 m<sup>2</sup>  
Perimeter: 24.15 m

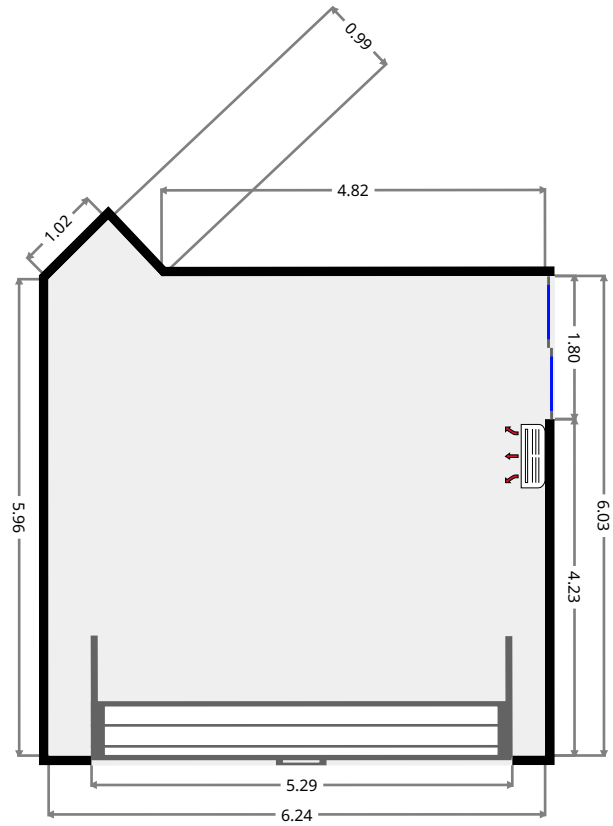
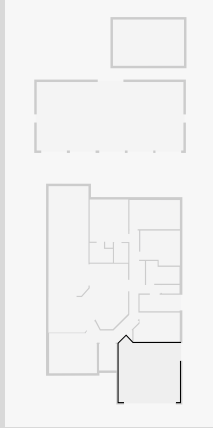


THIS FLOORPLAN IS PROVIDED WITHOUT WARRANTY OF ANY KIND. SENSOPIA DISCLAIMS ANY WARRANTY INCLUDING, WITHOUT LIMITATION, SATISFACTORY QUALITY OR ACCURACY OF DIMENSIONS.

# 83 Neilsen Road

## Garage

Width: 6.03 m  
Length: 6.24 m  
Area: 38.10 m<sup>2</sup>  
Perimeter: 25.11 m



## Media Room

Width: 4.12 m  
Length: 4.89 m  
Area: 19.33 m<sup>2</sup>  
Perimeter: 17.28 m

