

# 80 Stover Road

**SUBMITTED BY**  
Ray White Rockhampton Casey  
stockers@cqoz.com

---

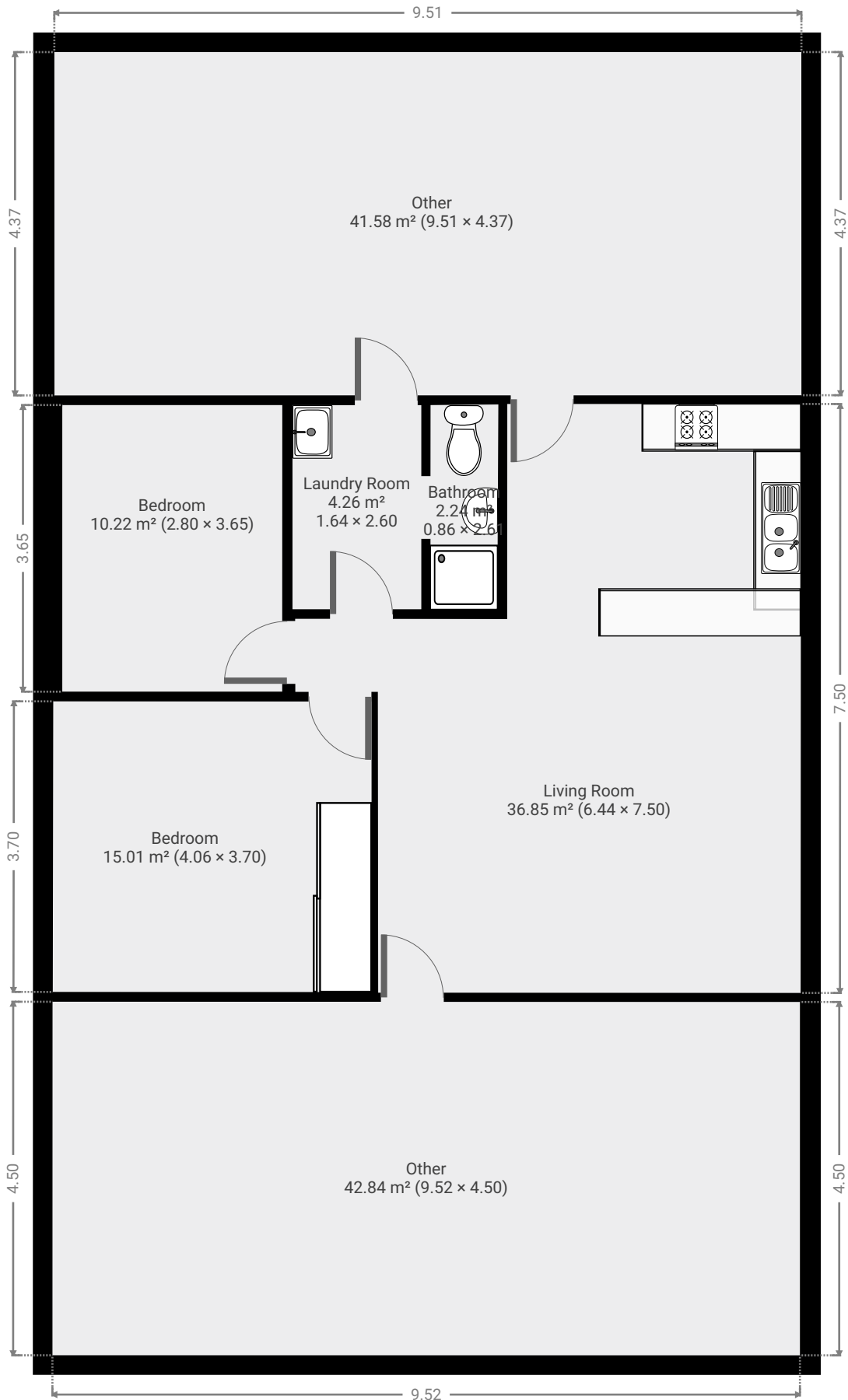
**CREATED ON**  
2022-07-11

---

**Floors**  
1

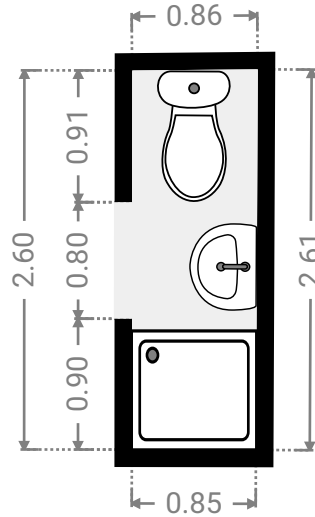
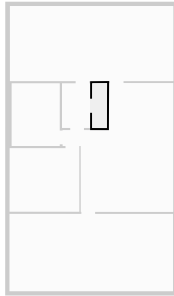
---

▼ Ground Floor



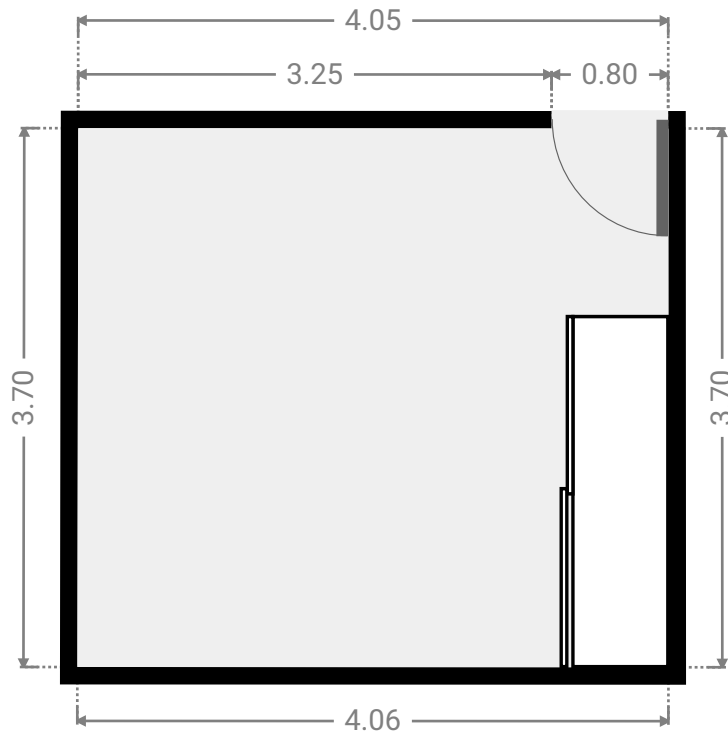
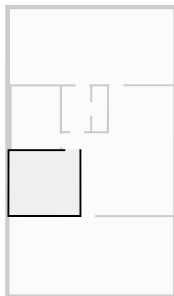
▼ **Bathroom**  
Ground Floor

WIDTH: 0.86 m • LENGTH: 2.61 m  
AREA: 2.24 m<sup>2</sup> • PERIMETER: 6.93 m



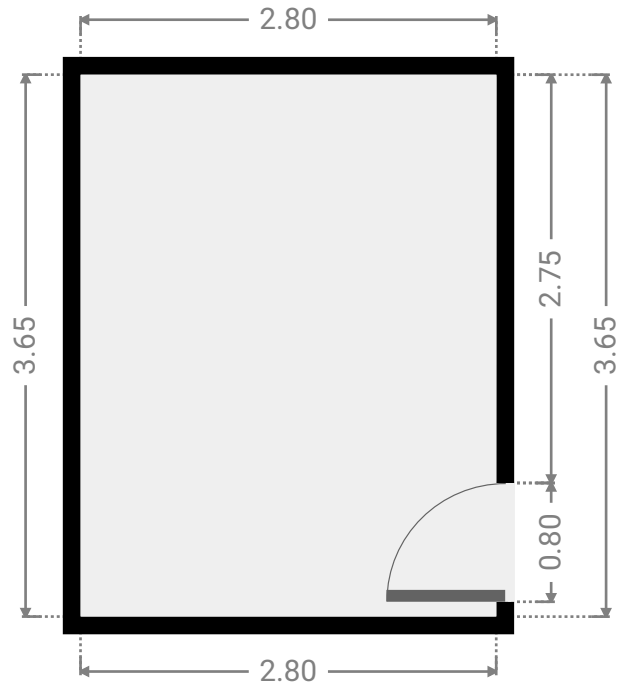
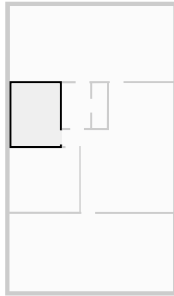
▼ **Bedroom**  
Ground Floor

WIDTH: 4.06 m • LENGTH: 3.70 m  
AREA: 15.01 m<sup>2</sup> • PERIMETER: 15.51 m



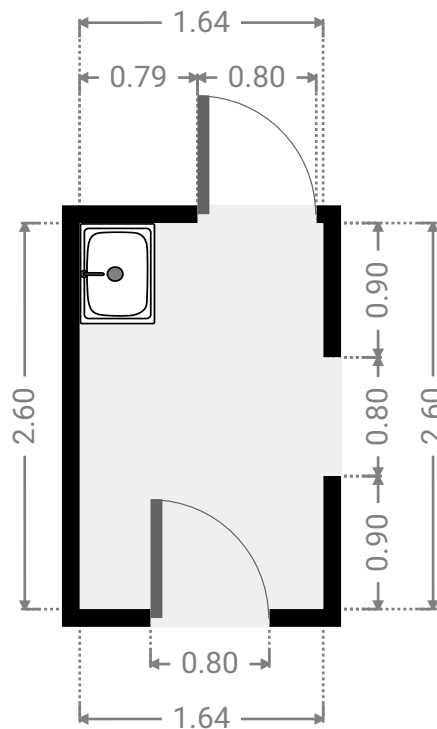
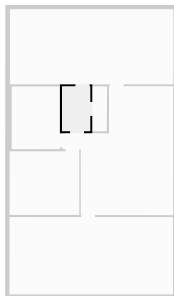
▼ **Bedroom**  
Ground Floor

WIDTH: 2.80 m • LENGTH: 3.65 m  
AREA: 10.22 m<sup>2</sup> • PERIMETER: 12.90 m



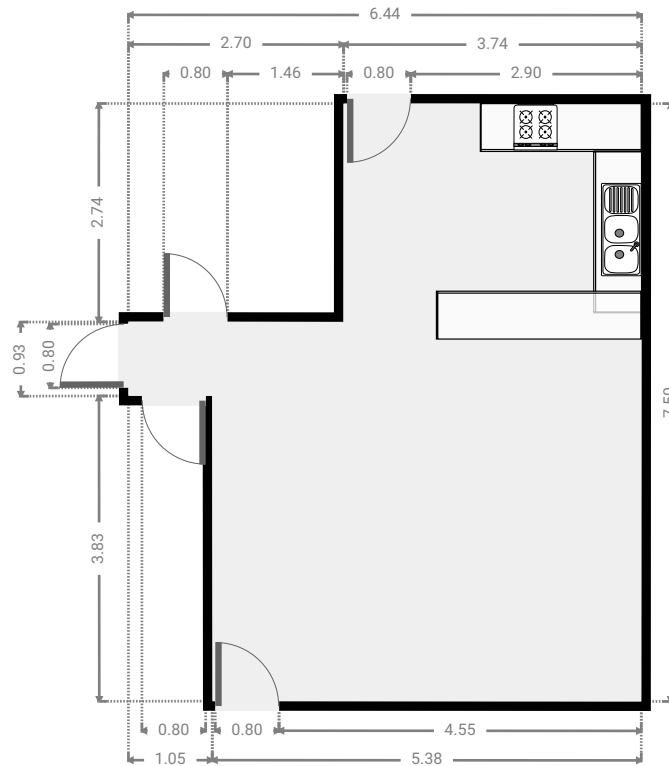
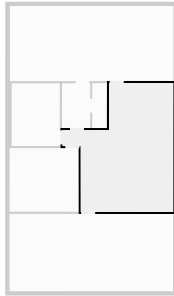
▼ **Laundry Room**  
Ground Floor

WIDTH: 1.64 m • LENGTH: 2.60 m  
AREA: 4.26 m<sup>2</sup> • PERIMETER: 8.48 m



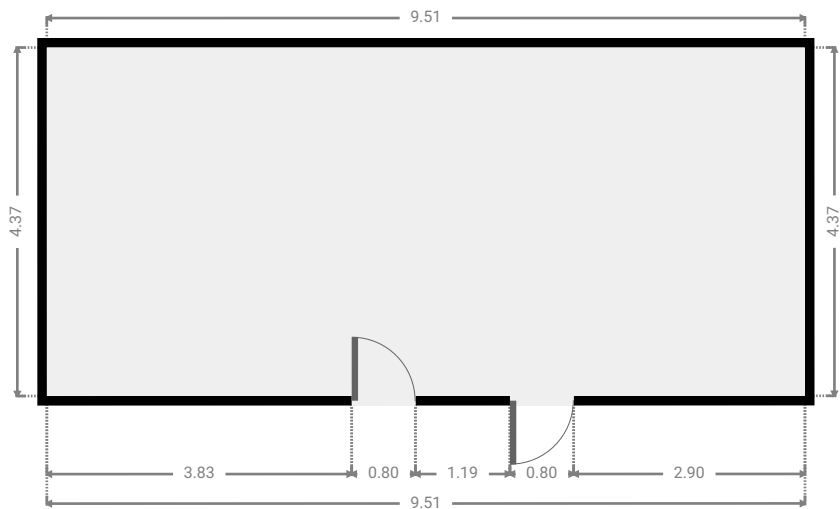
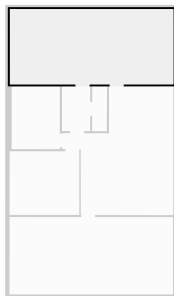
▼ **Living Room**  
Ground Floor

WIDTH: 6.44 m • LENGTH: 7.50 m  
AREA: 36.85 m<sup>2</sup> • PERIMETER: 27.87 m



▼ **Other**  
Ground Floor

WIDTH: 9.51 m • LENGTH: 4.37 m  
AREA: 41.58 m<sup>2</sup> • PERIMETER: 27.77 m



▼ Other  
Ground Floor

WIDTH: 9.52 m • LENGTH: 4.50 m  
AREA: 42.84 m<sup>2</sup> • PERIMETER: 28.04 m

