

8 Horwell Court

SUBMITTED BY
Ray White Rockhampton Casey
stockers@cqoz.com

CREATED ON
2022-09-05

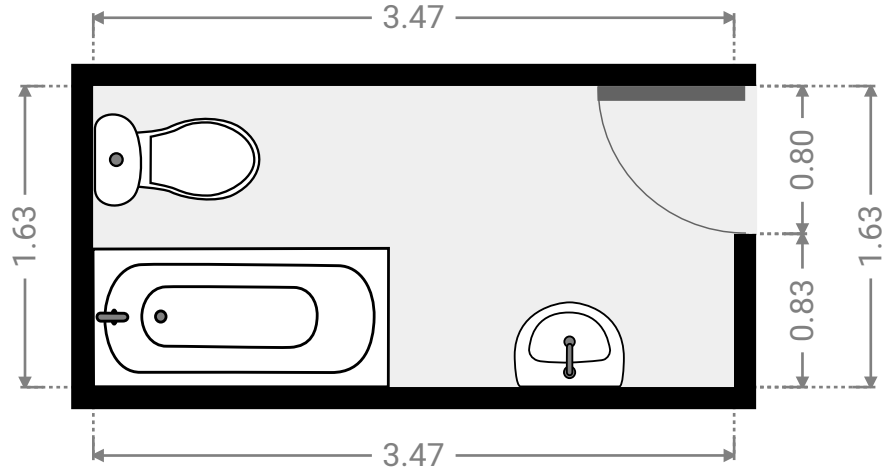
Floors
1

▼ Ground Floor



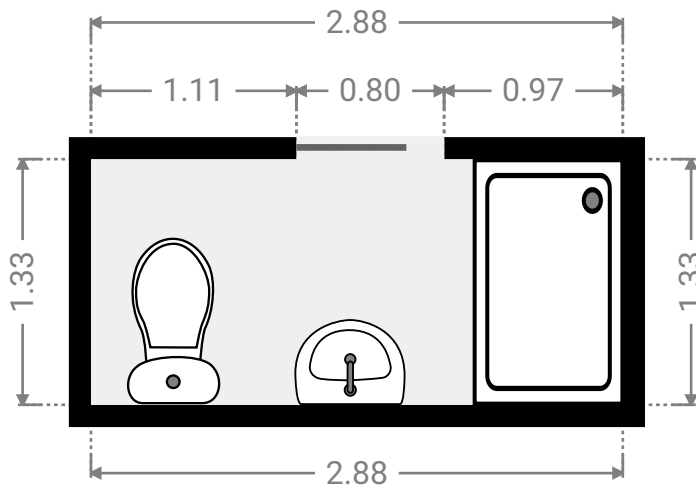
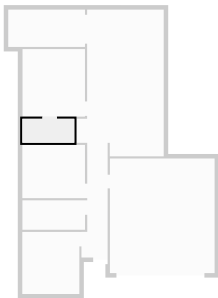
▼ **Bathroom**
Ground Floor

WIDTH: 3.47 m • LENGTH: 1.63 m
AREA: 5.66 m² • PERIMETER: 10.20 m



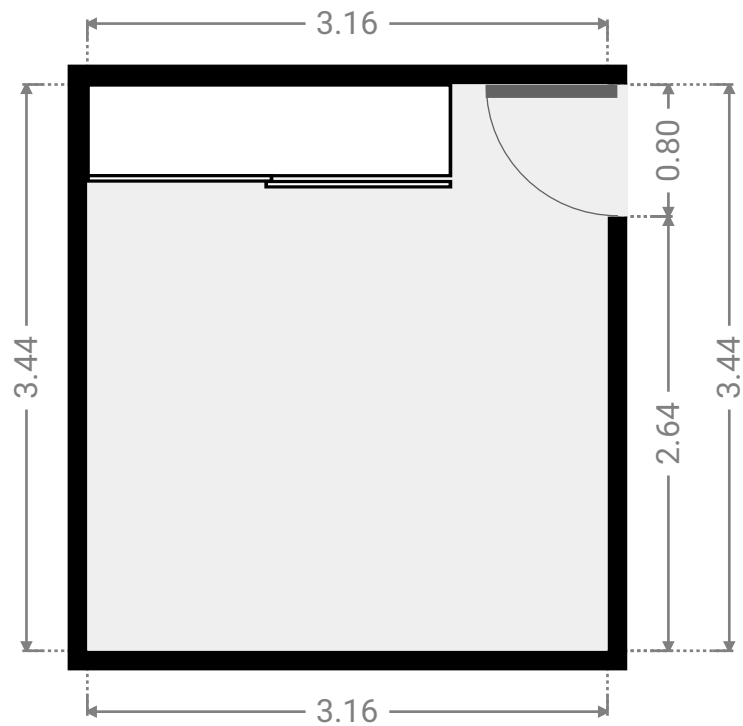
▼ **Bathroom**
Ground Floor

WIDTH: 2.88 m • LENGTH: 1.33 m
AREA: 3.83 m² • PERIMETER: 8.42 m



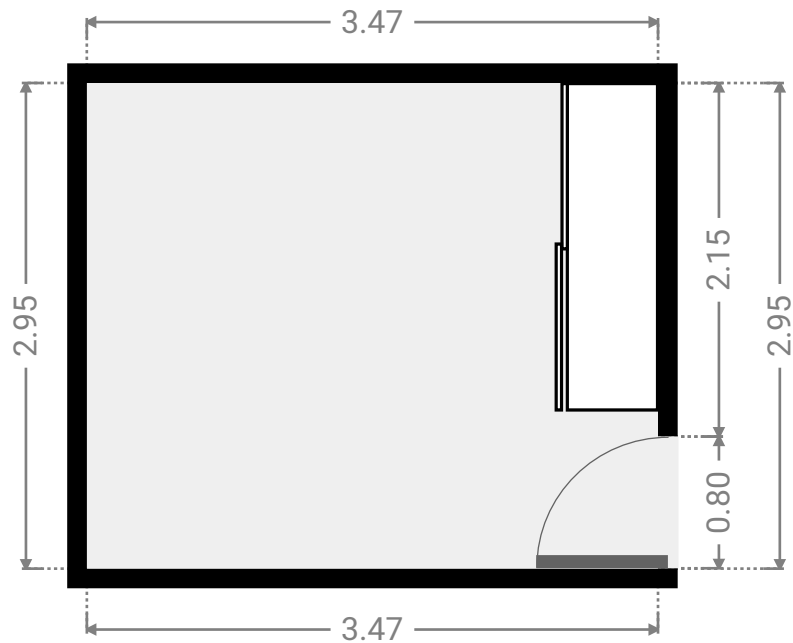
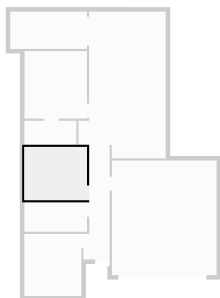
▼ Bedroom Ground Floor

WIDTH: 3.16 m • LENGTH: 3.44 m
AREA: 10.87 m² • PERIMETER: 13.20 m



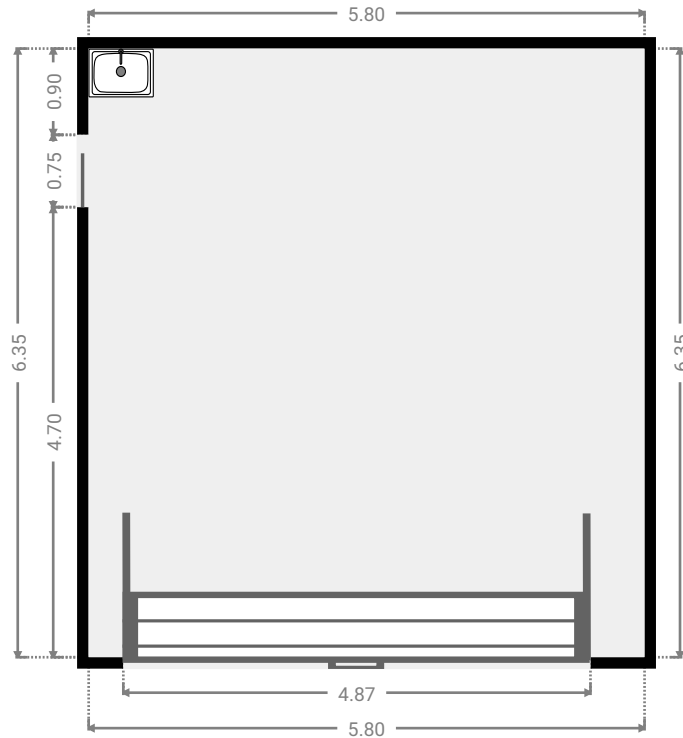
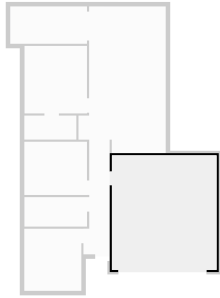
▼ Bedroom Ground Floor

WIDTH: 3.47 m • LENGTH: 2.95 m
AREA: 10.24 m² • PERIMETER: 12.84 m



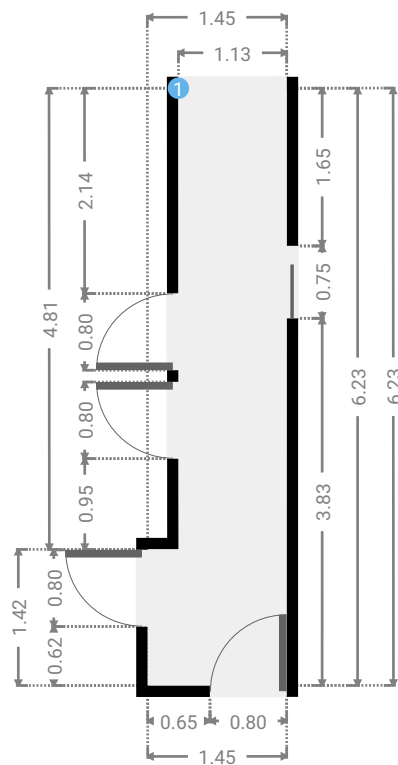
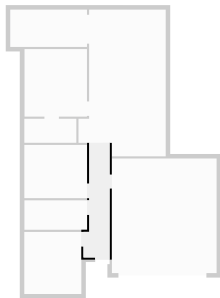
▼ **Garage**
Ground Floor

WIDTH: 5.80 m • LENGTH: 6.35 m
AREA: 36.83 m² • PERIMETER: 24.30 m



▼ **Hall**
Ground Floor

WIDTH: 1.45 m • LENGTH: 6.23 m
AREA: 7.49 m² • PERIMETER: 15.37 m



▼ Hall/Ground Floor

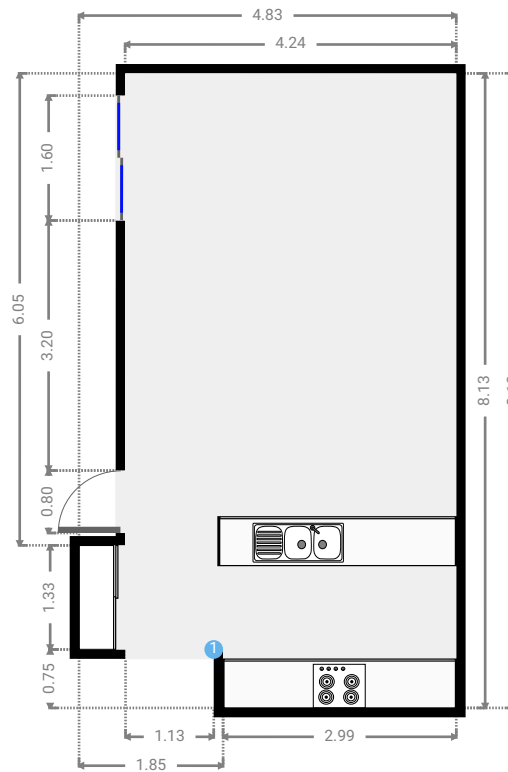
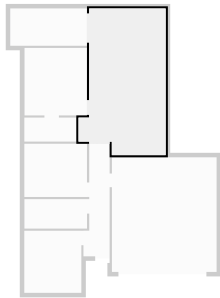
1 OPENING

Height
0.00 m



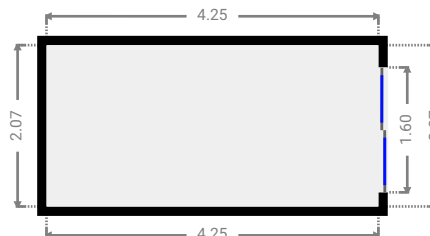
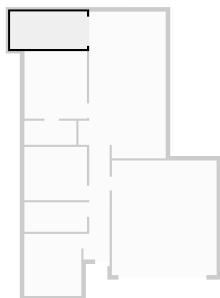
▼ Kitchen Ground Floor

WIDTH: 4.83 m • LENGTH: 8.13 m
AREA: 34.33 m² • PERIMETER: 25.92 m



▼ Other Ground Floor

WIDTH: 4.25 m • LENGTH: 2.07 m
AREA: 8.79 m² • PERIMETER: 12.64 m



▼ Primary Bedroom Ground Floor

WIDTH: 3.46 m • LENGTH: 3.74 m
AREA: 12.94 m² • PERIMETER: 14.40 m

