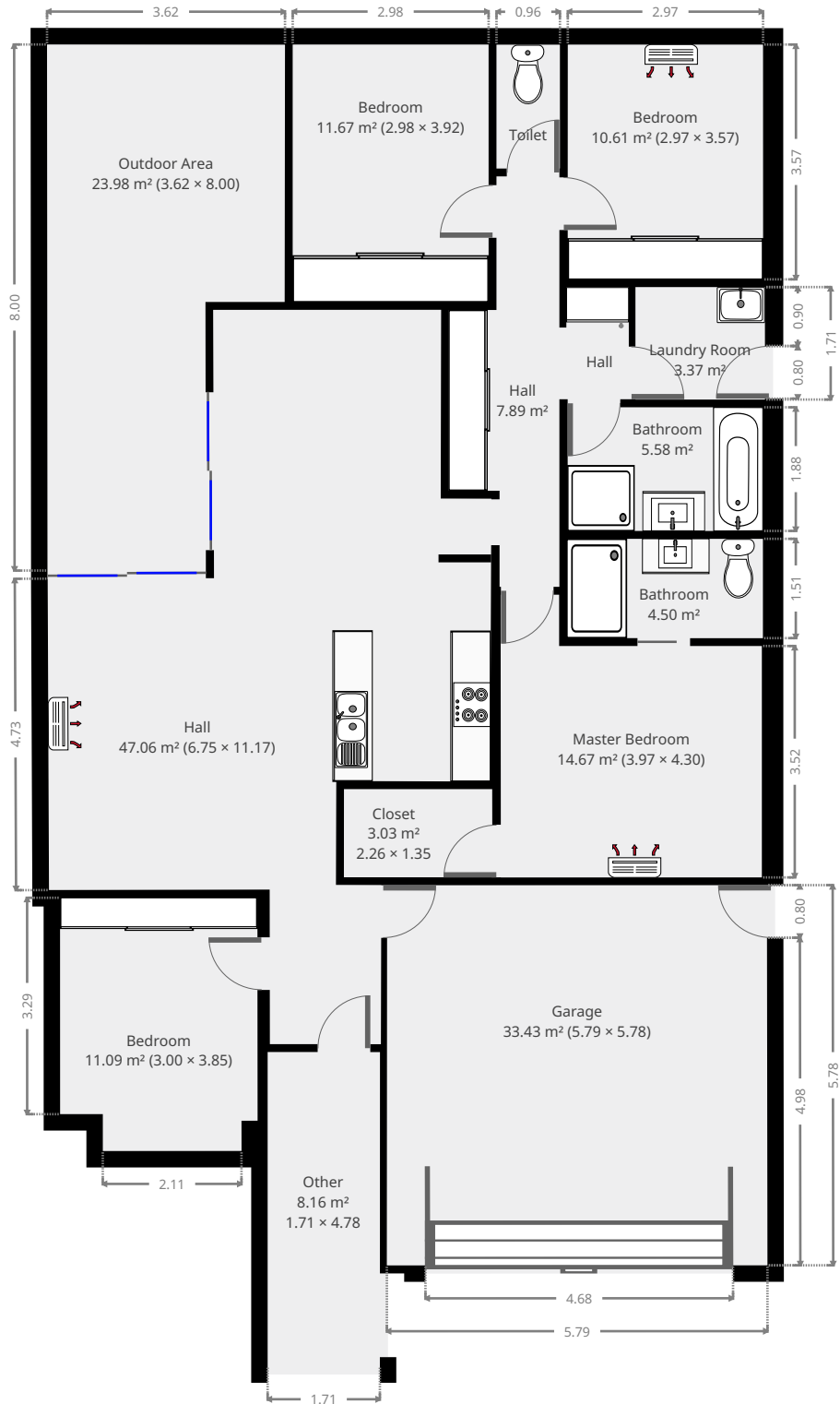
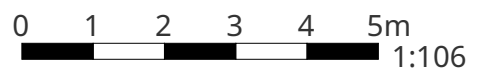


# 8 Bronco Crescent

## Ground Floor



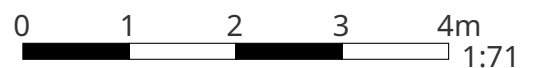
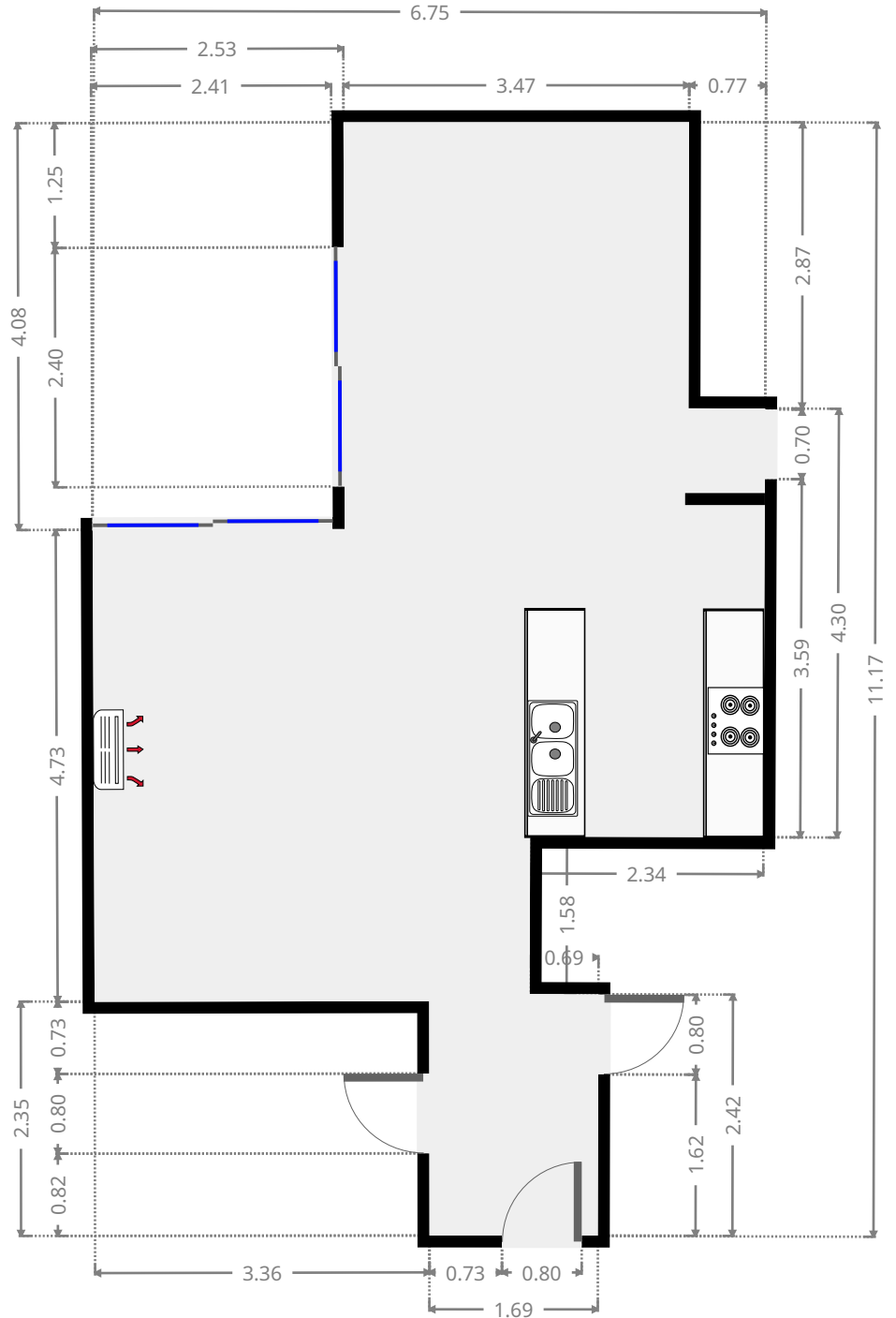
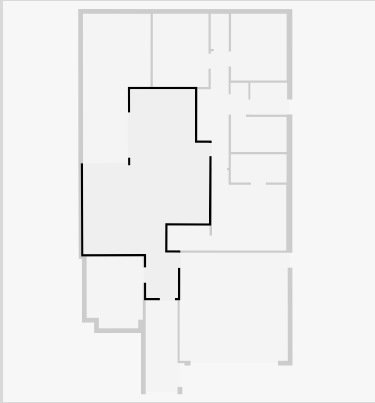
THIS FLOORPLAN IS PROVIDED WITHOUT WARRANTY OF ANY KIND. SENSOPIA DISCLAIMS ANY WARRANTY INCLUDING, WITHOUT LIMITATION, SATISFACTORY QUALITY OR ACCURACY OF DIMENSIONS.



# 8 Bronco Crescent

## Hall

Width: 6.75 m  
 Length: 11.17 m  
 Area: 47.06 m<sup>2</sup>  
 Perimeter: 37.18 m

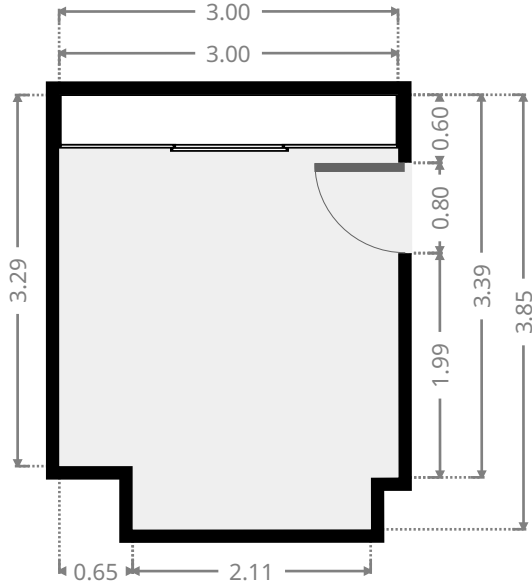
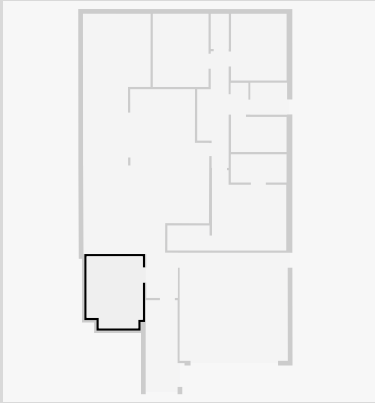


THIS FLOORPLAN IS PROVIDED WITHOUT WARRANTY OF ANY KIND. SENSOPIA DISCLAIMS ANY WARRANTY INCLUDING, WITHOUT LIMITATION, SATISFACTORY QUALITY OR ACCURACY OF DIMENSIONS.

# 8 Bronco Crescent

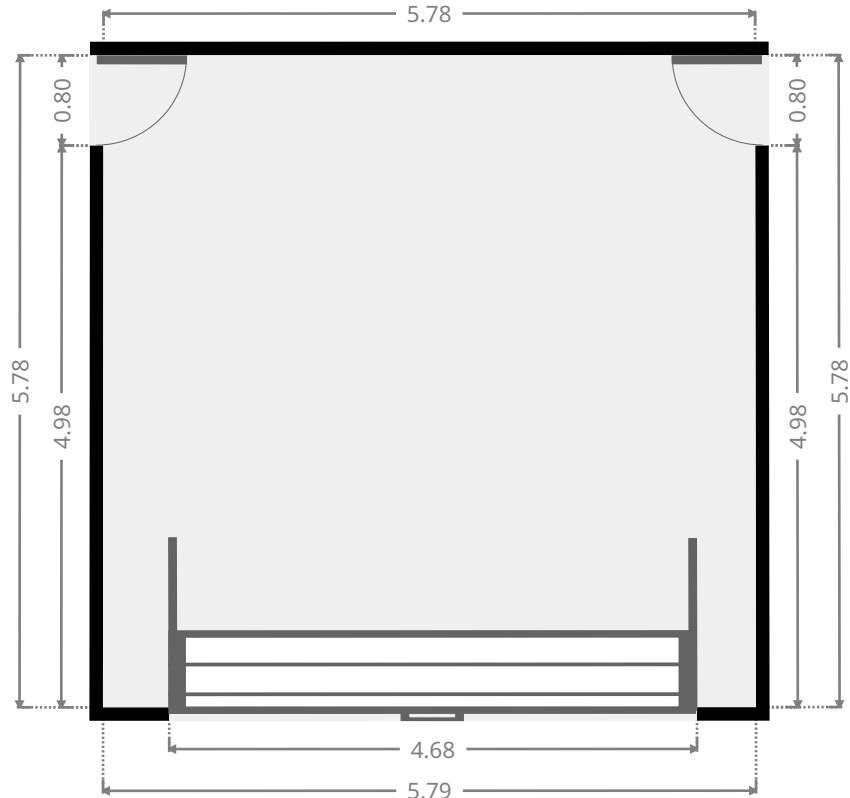
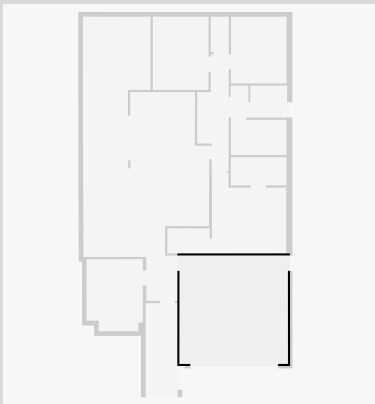
## Bedroom

Width: 3.00 m  
 Length: 3.85 m  
 Area: 11.09 m<sup>2</sup>  
 Perimeter: 13.71 m



## Garage

Width: 5.78 m  
 Length: 5.79 m  
 Area: 33.43 m<sup>2</sup>  
 Perimeter: 23.13 m

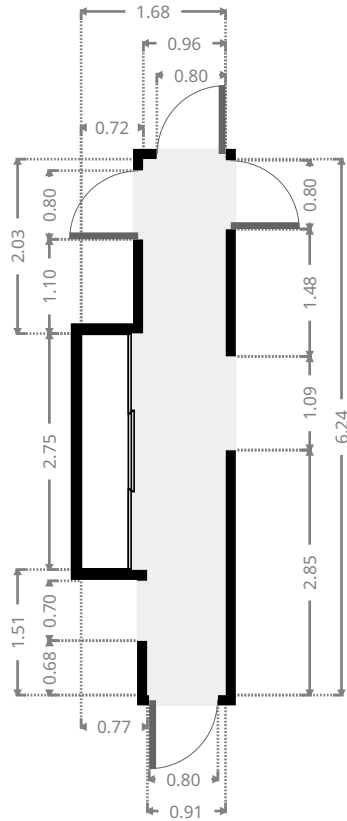
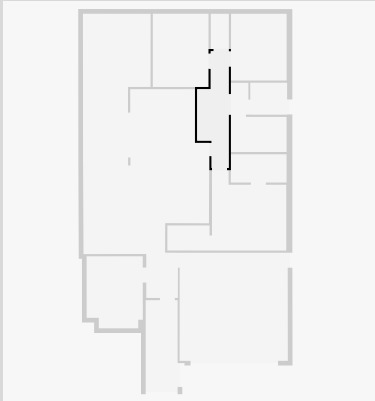


THIS FLOORPLAN IS PROVIDED WITHOUT WARRANTY OF ANY KIND. SENSOPIA DISCLAIMS ANY WARRANTY INCLUDING, WITHOUT LIMITATION, SATISFACTORY QUALITY OR ACCURACY OF DIMENSIONS.

# 8 Bronco Crescent

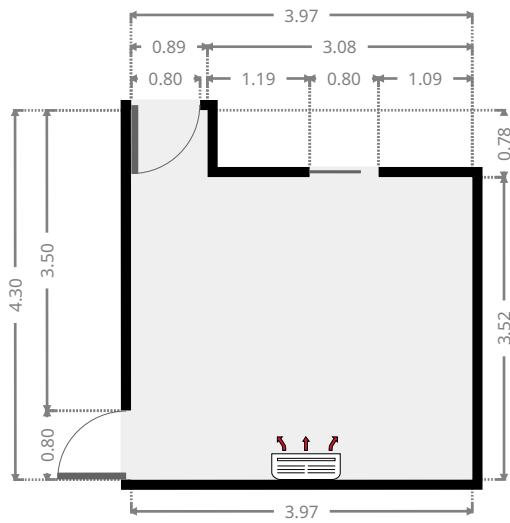
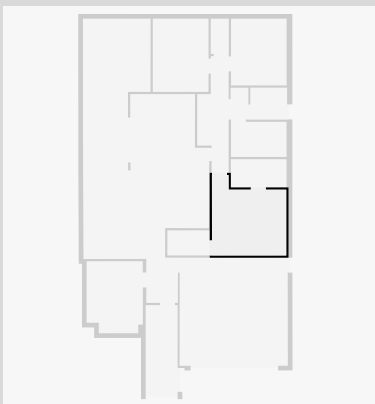
## Hall

Width: 1.68 m  
 Length: 6.24 m  
 Area: 7.89 m<sup>2</sup>  
 Perimeter: 15.84 m



## Master Bedroom

Width: 3.97 m  
 Length: 4.30 m  
 Area: 14.67 m<sup>2</sup>  
 Perimeter: 16.54 m



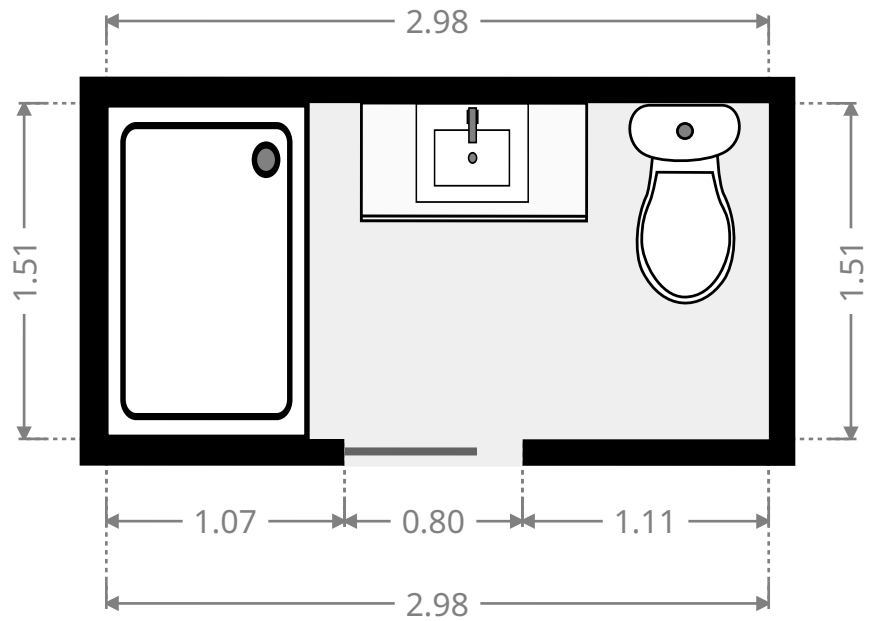
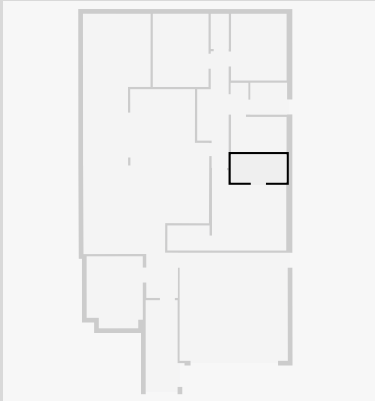
THIS FLOORPLAN IS PROVIDED WITHOUT WARRANTY OF ANY KIND. SENSOPIA DISCLAIMS ANY WARRANTY INCLUDING, WITHOUT LIMITATION, SATISFACTORY QUALITY OR ACCURACY OF DIMENSIONS.



# 8 Bronco Crescent

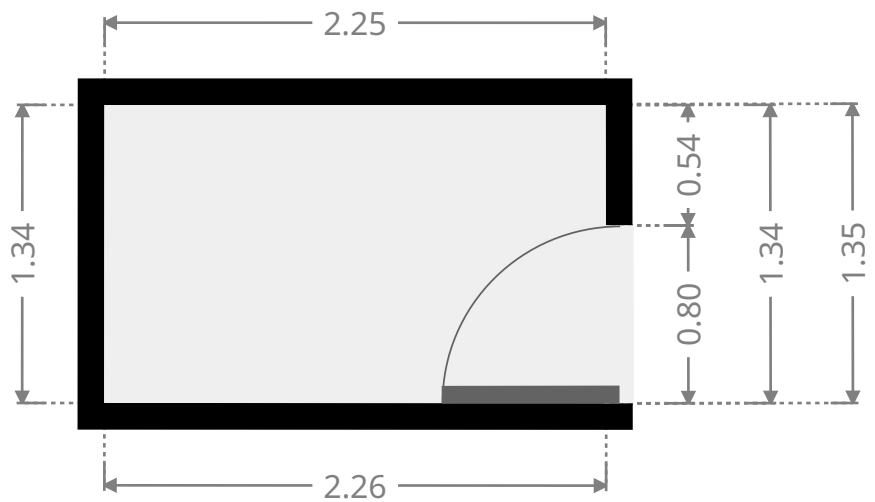
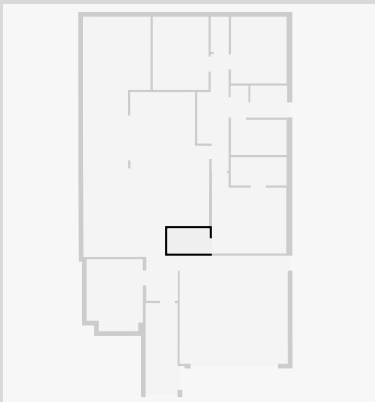
## Bathroom

Width: 1.51 m  
 Length: 2.98 m  
 Area: 4.50 m<sup>2</sup>  
 Perimeter: 8.98 m

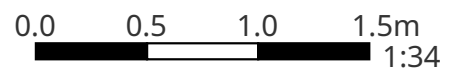


## Closet

Width: 1.35 m  
 Length: 2.26 m  
 Area: 3.03 m<sup>2</sup>  
 Perimeter: 7.20 m



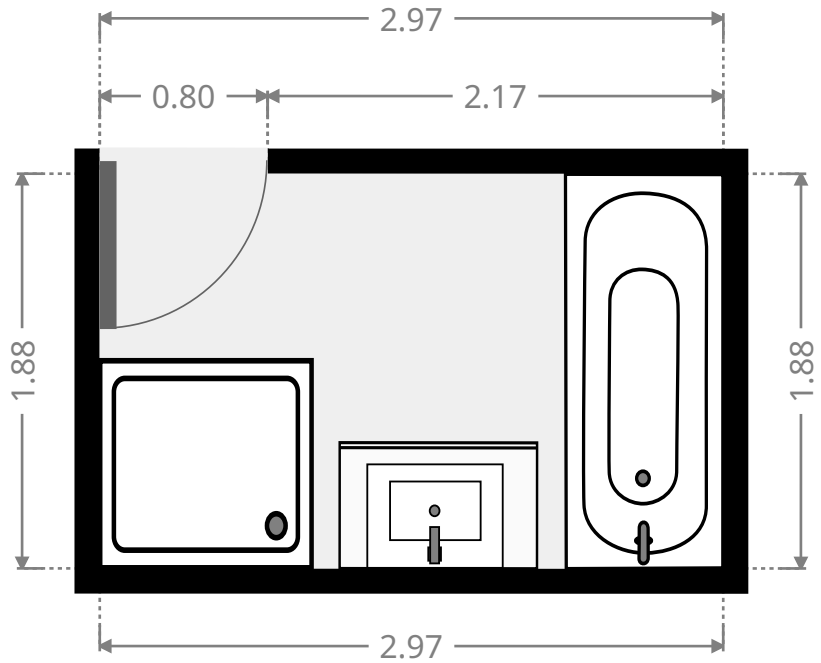
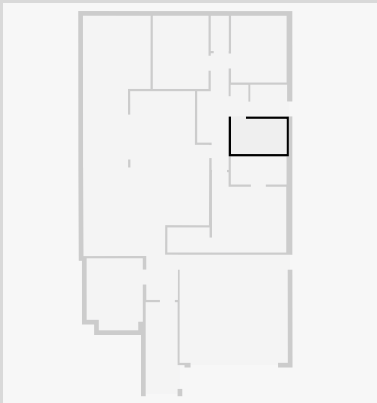
THIS FLOORPLAN IS PROVIDED WITHOUT WARRANTY OF ANY KIND. SENSOPIA DISCLAIMS ANY WARRANTY INCLUDING, WITHOUT LIMITATION, SATISFACTORY QUALITY OR ACCURACY OF DIMENSIONS.



# 8 Bronco Crescent

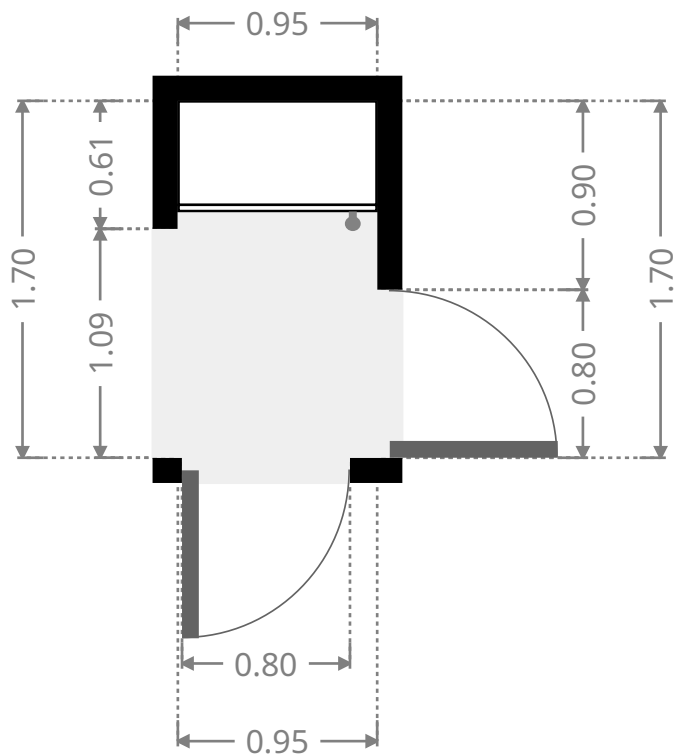
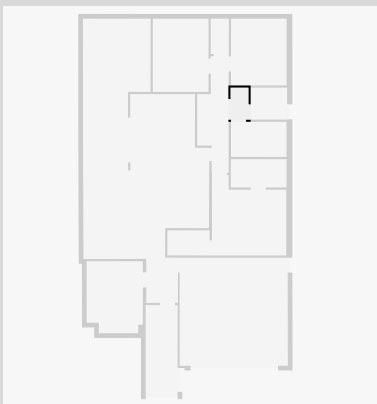
## Bathroom

Width: 1.88 m  
 Length: 2.97 m  
 Area: 5.58 m<sup>2</sup>  
 Perimeter: 9.70 m

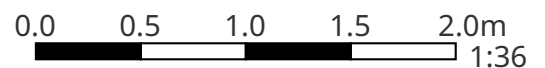


## Hall

Width: 0.95 m  
 Length: 1.70 m  
 Area: 1.61 m<sup>2</sup>  
 Perimeter: 5.30 m



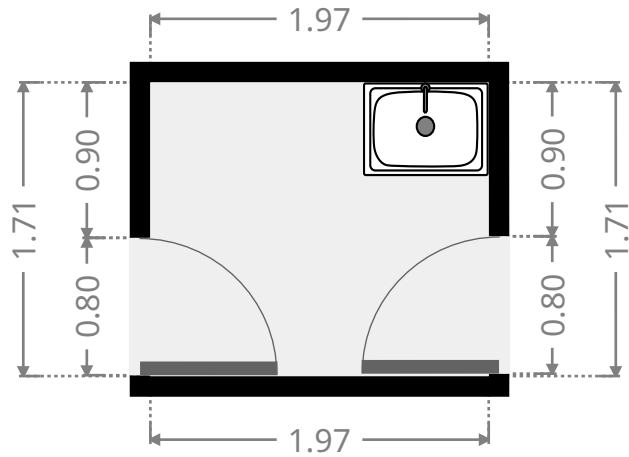
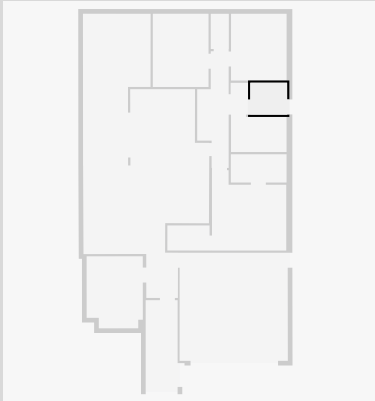
THIS FLOORPLAN IS PROVIDED WITHOUT WARRANTY OF ANY KIND. SENSOPIA DISCLAIMS ANY WARRANTY INCLUDING, WITHOUT LIMITATION, SATISFACTORY QUALITY OR ACCURACY OF DIMENSIONS.



# 8 Bronco Crescent

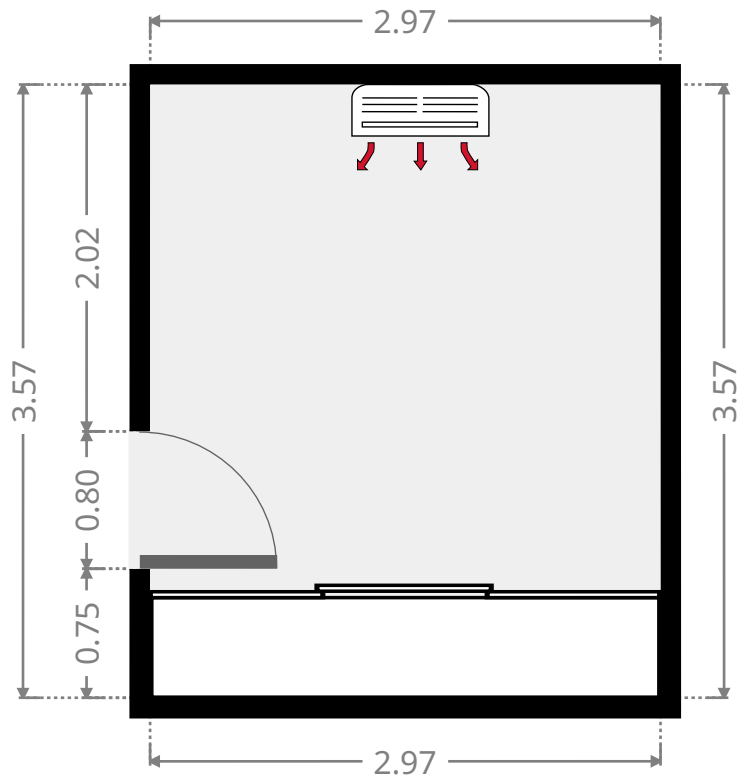
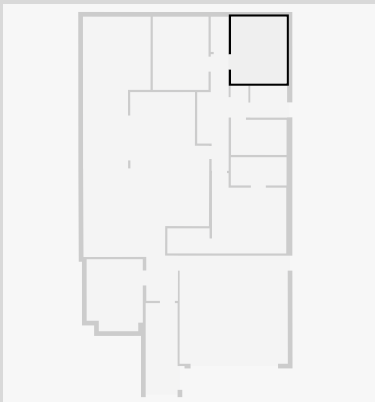
## Laundry Room

Width: 1.71 m  
Length: 1.97 m  
Area: 3.37 m<sup>2</sup>  
Perimeter: 7.36 m



## Bedroom

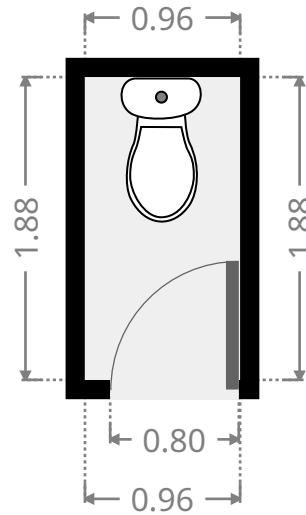
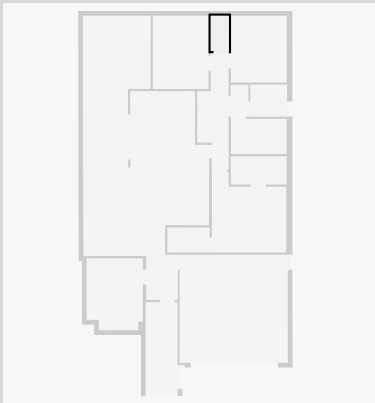
Width: 2.97 m  
Length: 3.57 m  
Area: 10.61 m<sup>2</sup>  
Perimeter: 13.08 m



# 8 Bronco Crescent

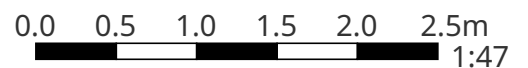
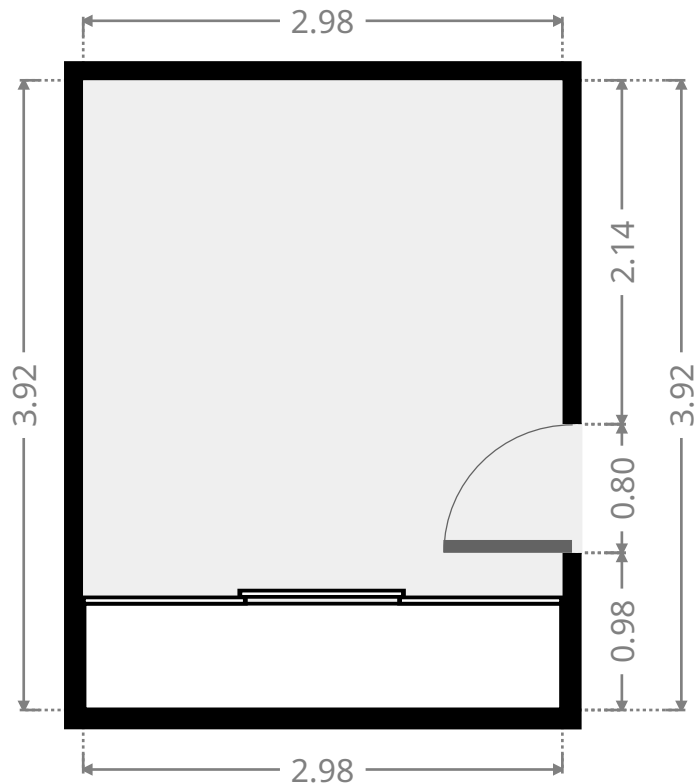
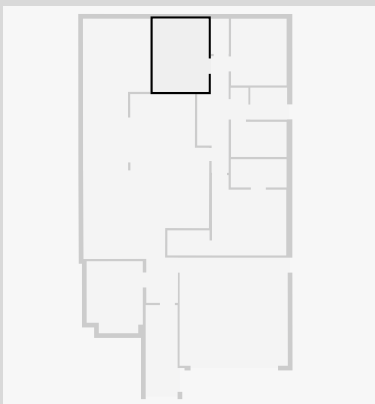
## Toilet / Half Bath

Width: 0.96 m  
Length: 1.88 m  
Area: 1.82 m<sup>2</sup>  
Perimeter: 5.70 m



## Bedroom

Width: 2.98 m  
Length: 3.92 m  
Area: 11.67 m<sup>2</sup>  
Perimeter: 13.79 m



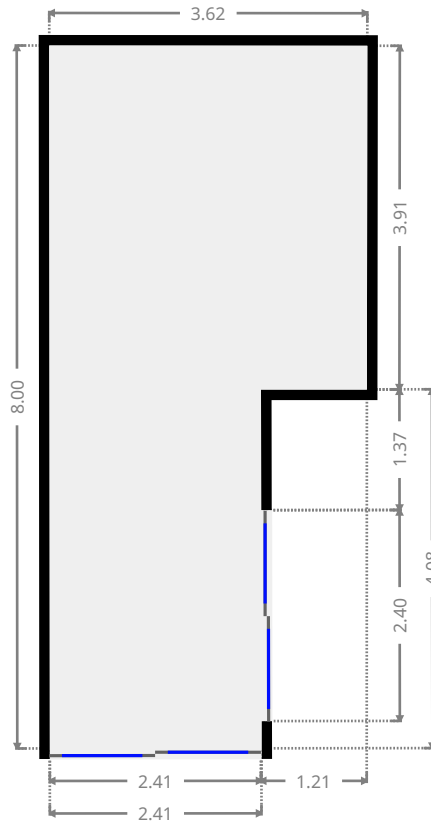
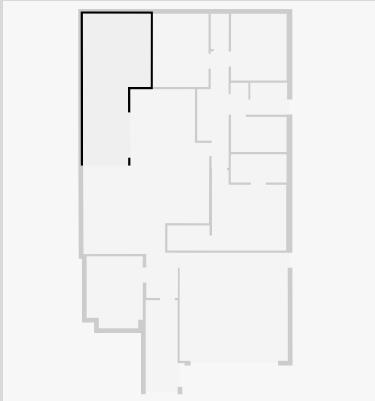
THIS FLOORPLAN IS PROVIDED WITHOUT WARRANTY OF ANY KIND. SENSOPIA DISCLAIMS ANY WARRANTY INCLUDING, WITHOUT LIMITATION, SATISFACTORY QUALITY OR ACCURACY OF DIMENSIONS.



# 8 Bronco Crescent

## Outdoor Area

Width: 3.62 m  
 Length: 8.00 m  
 Area: 23.98 m<sup>2</sup>  
 Perimeter: 23.23 m



## Other

Width: 1.71 m  
 Length: 4.78 m  
 Area: 8.16 m<sup>2</sup>  
 Perimeter: 12.97 m

