

8 Bronco Crescent

SUBMITTED BY

Ray White Rockhampton Casey
stockers@cqoz.com

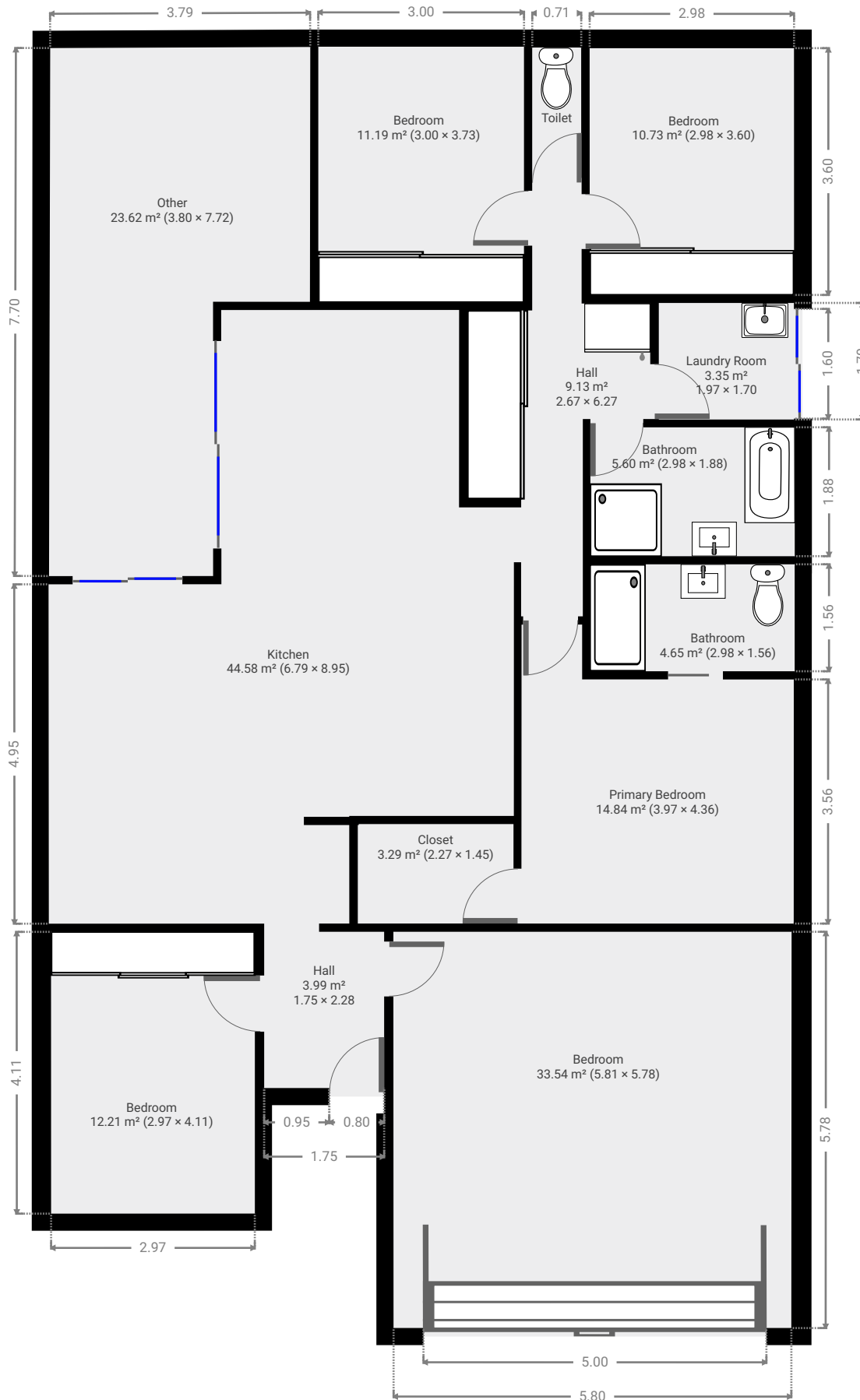
CREATED ON

2022-07-26

Floors

1

▼ Ground Floor

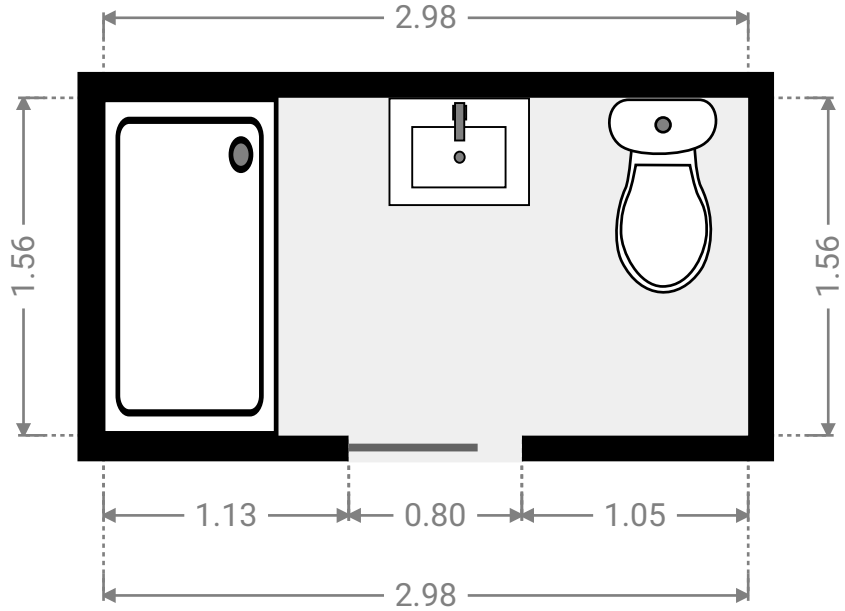
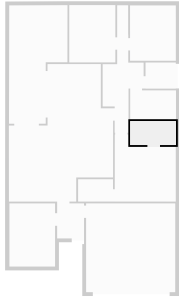


8 Bronco Crescent

FLOORS: 1

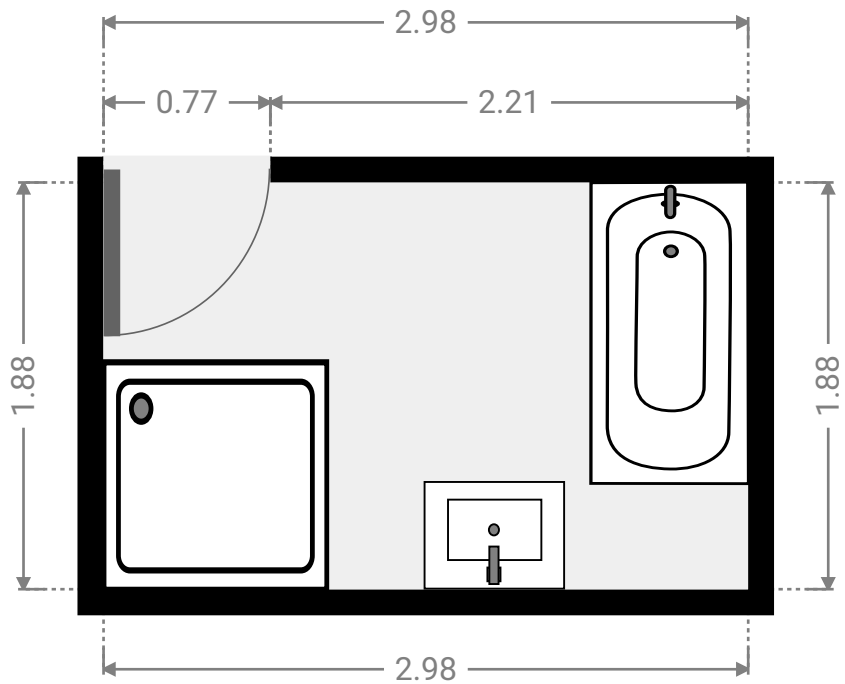
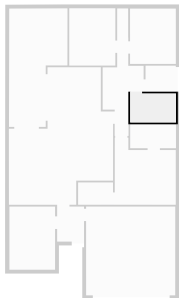
▼ Bathroom Ground Floor

WIDTH: 2.98 m • LENGTH: 1.56 m
AREA: 4.65 m² • PERIMETER: 9.08 m



▼ Bathroom Ground Floor

WIDTH: 2.98 m • LENGTH: 1.88 m
AREA: 5.60 m² • PERIMETER: 9.72 m

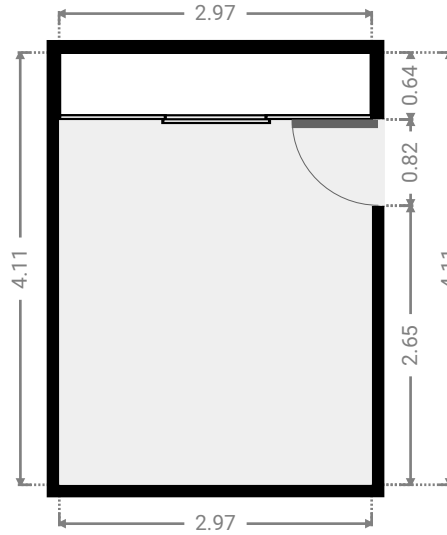
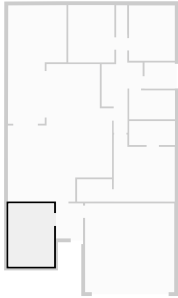


8 Bronco Crescent

FLOORS: 1

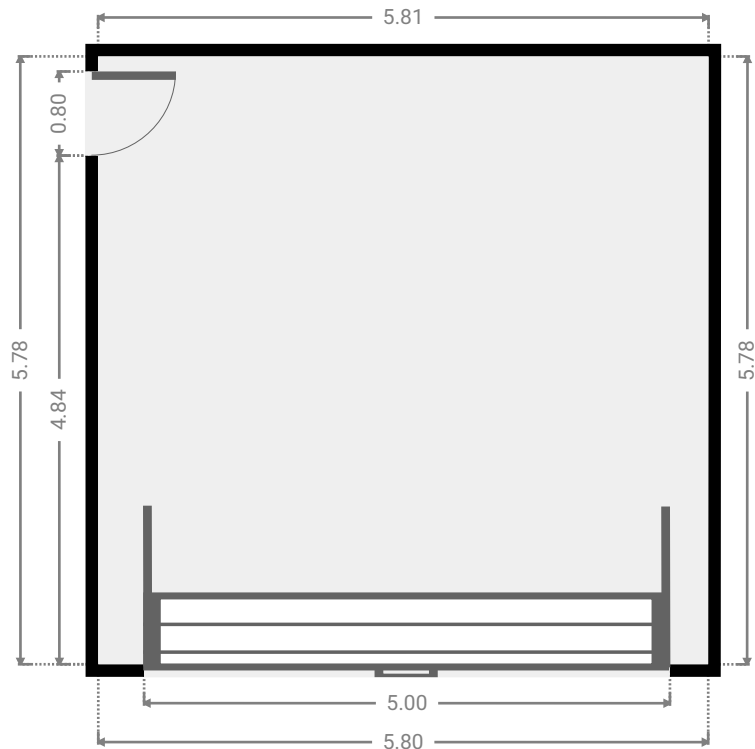
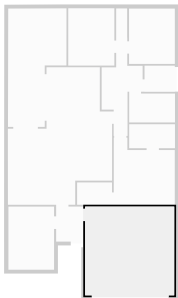
▼ Bedroom Ground Floor

WIDTH: 2.97 m • LENGTH: 4.11 m
AREA: 12.21 m² • PERIMETER: 14.16 m



▼ Bedroom Ground Floor

WIDTH: 5.81 m • LENGTH: 5.78 m
AREA: 33.54 m² • PERIMETER: 23.17 m

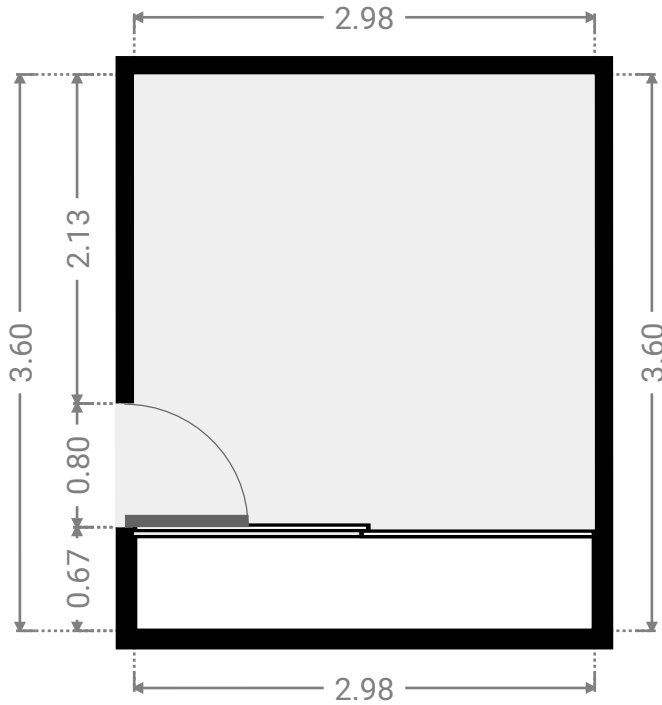
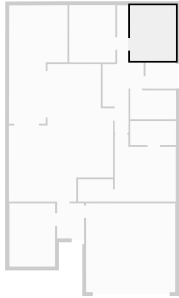


8 Bronco Crescent

FLOORS: 1

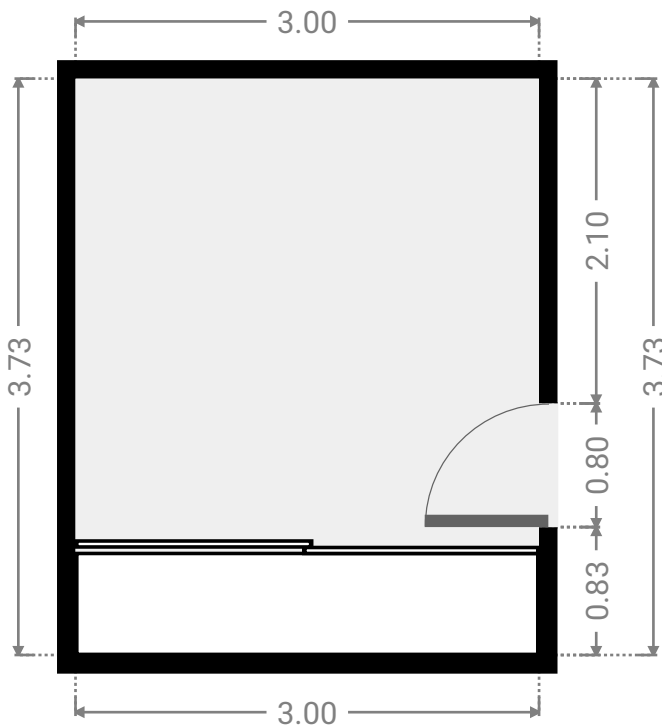
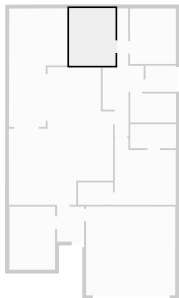
▼ Bedroom Ground Floor

WIDTH: 2.98 m • LENGTH: 3.60 m
AREA: 10.73 m² • PERIMETER: 13.16 m



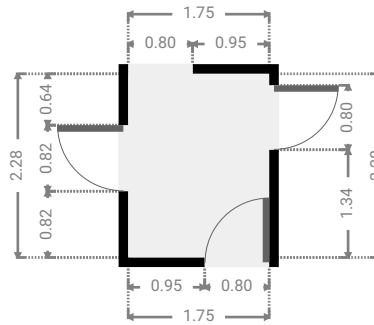
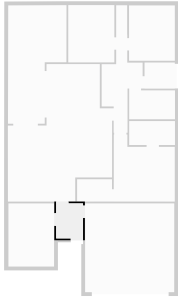
▼ Bedroom Ground Floor

WIDTH: 3.00 m • LENGTH: 3.73 m
AREA: 11.19 m² • PERIMETER: 13.46 m



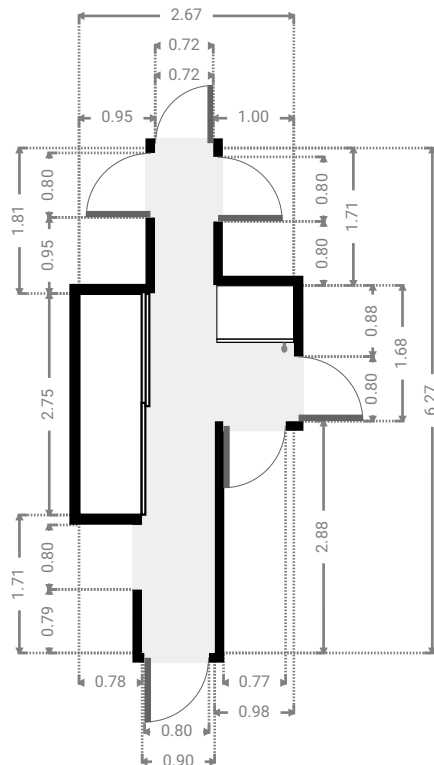
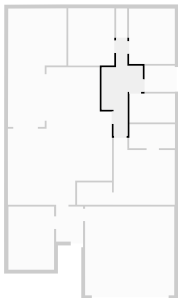
▼ Hall Ground Floor

WIDTH: 1.75 m • LENGTH: 2.28 m
AREA: 3.99 m² • PERIMETER: 8.06 m



▼ Hall Ground Floor

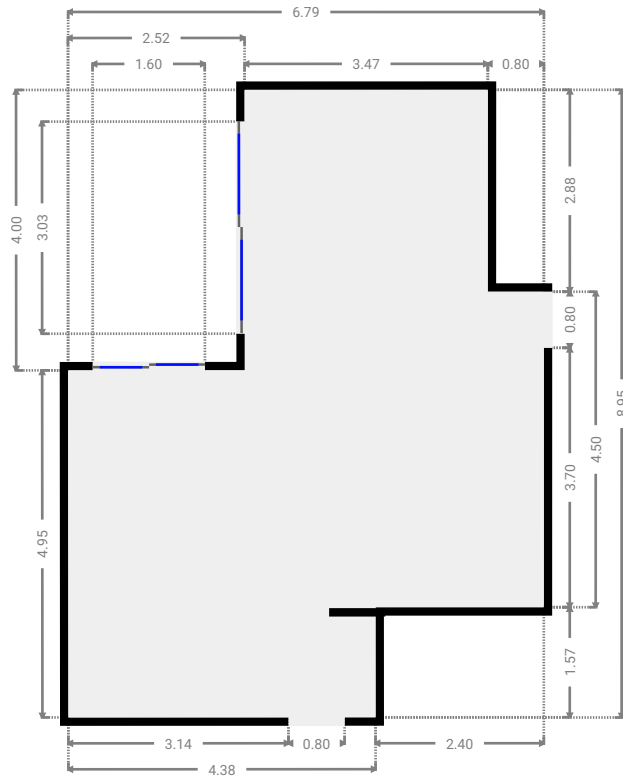
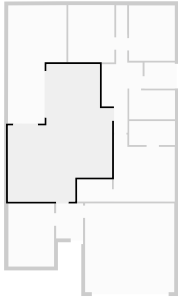
WIDTH: 2.67 m • LENGTH: 6.27 m
AREA: 9.13 m² • PERIMETER: 17.87 m



FLOORS: 1

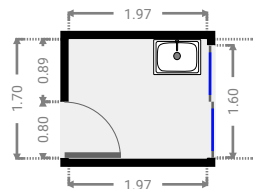
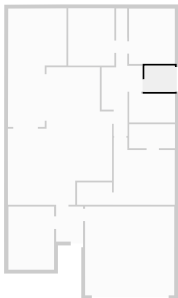
▼ Kitchen Ground Floor

WIDTH: 6.79 m • LENGTH: 8.95 m
AREA: 44.58 m² • PERIMETER: 31.47 m



▼ Laundry Room Ground Floor

WIDTH: 1.97 m • LENGTH: 1.70 m
AREA: 3.35 m² • PERIMETER: 7.34 m

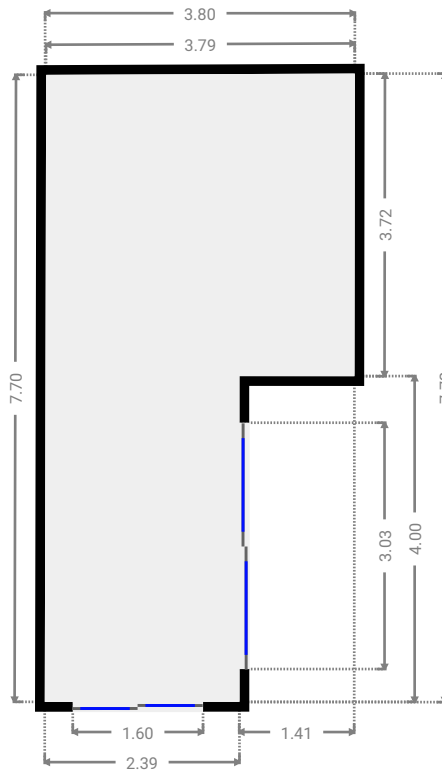
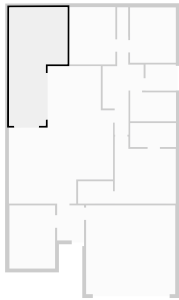


8 Bronco Crescent

FLOORS: 1

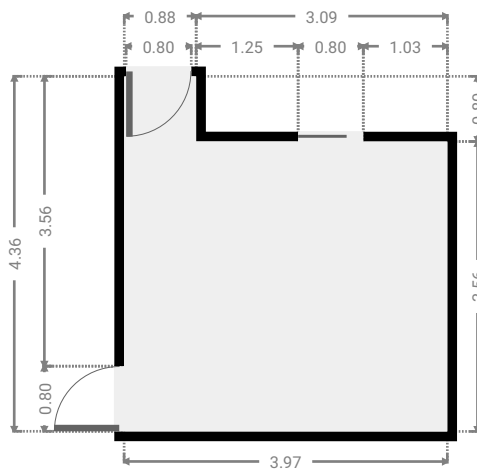
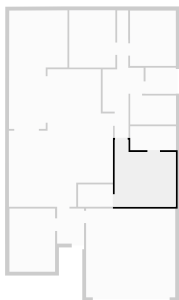
▼ Other Ground Floor

WIDTH: 3.80 m • LENGTH: 7.72 m
AREA: 23.62 m² • PERIMETER: 23.01 m



▼ Primary Bedroom Ground Floor

WIDTH: 3.97 m • LENGTH: 4.36 m
AREA: 14.84 m² • PERIMETER: 16.66 m

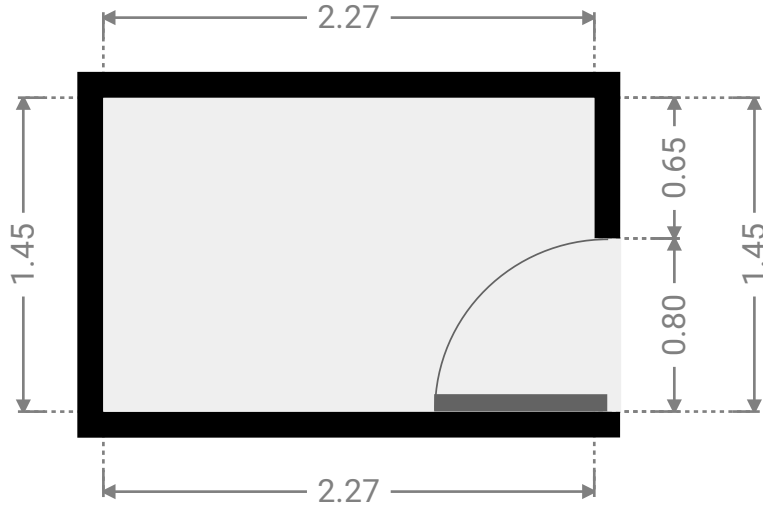
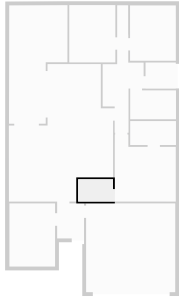


8 Bronco Crescent

FLOORS: 1

▼ Closet Ground Floor

WIDTH: 2.27 m • LENGTH: 1.45 m
AREA: 3.29 m² • PERIMETER: 7.44 m



▼ Toilet Ground Floor

WIDTH: 0.71 m • LENGTH: 1.91 m
AREA: 1.36 m² • PERIMETER: 5.25 m

