

# 8 Argan Close

Created on  
2021-08-17

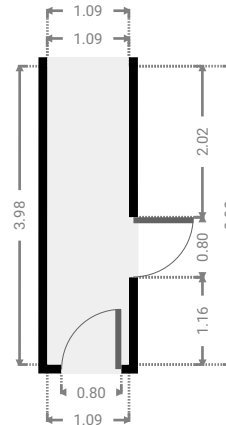
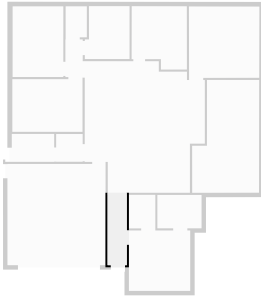
Floors  
1

## ▼ Ground Floor



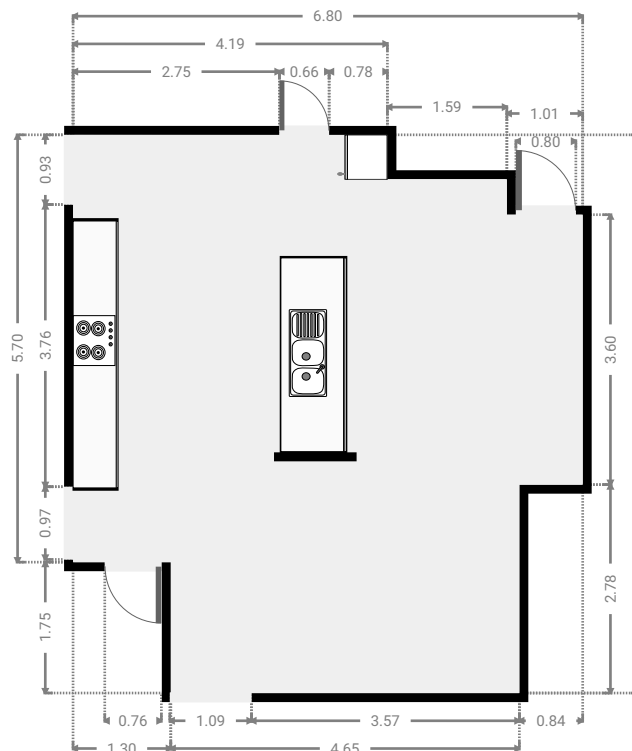
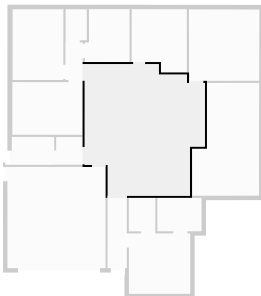
## ▼ Hall Ground Floor

WIDTH: 1.09 m • LENGTH: 3.98 m  
AREA: 4.33 m<sup>2</sup> • PERIMETER: 10.14 m



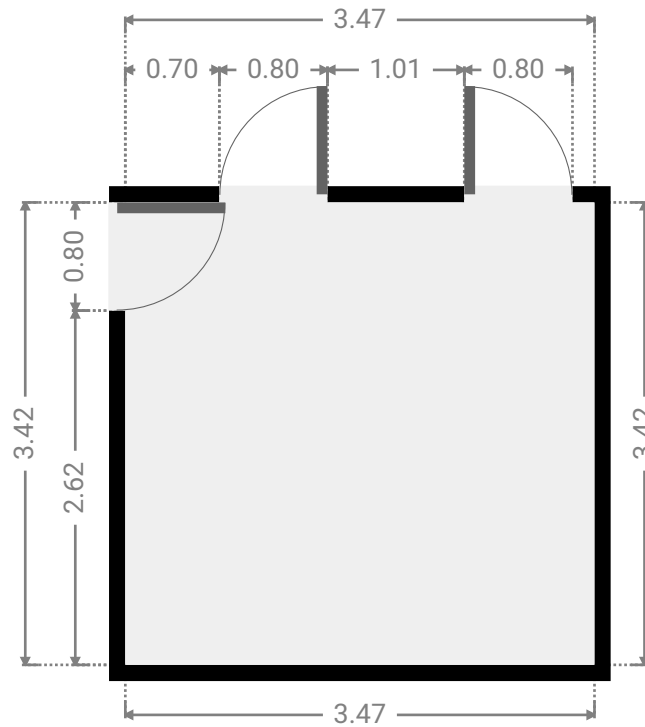
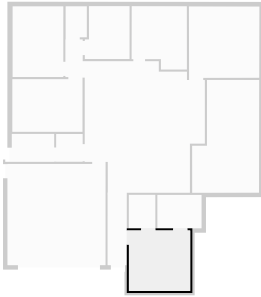
## ▼ Kitchen Ground Floor

WIDTH: 6.80 m • LENGTH: 7.45 m  
AREA: 43.97 m<sup>2</sup> • PERIMETER: 28.49 m



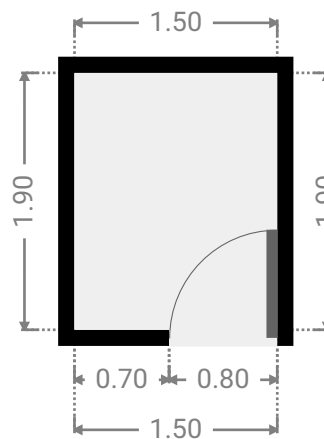
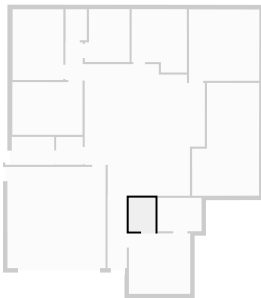
## ▼ Master Bedroom Ground Floor

WIDTH: 3.47 m • LENGTH: 3.42 m  
AREA: 11.87 m<sup>2</sup> • PERIMETER: 13.78 m



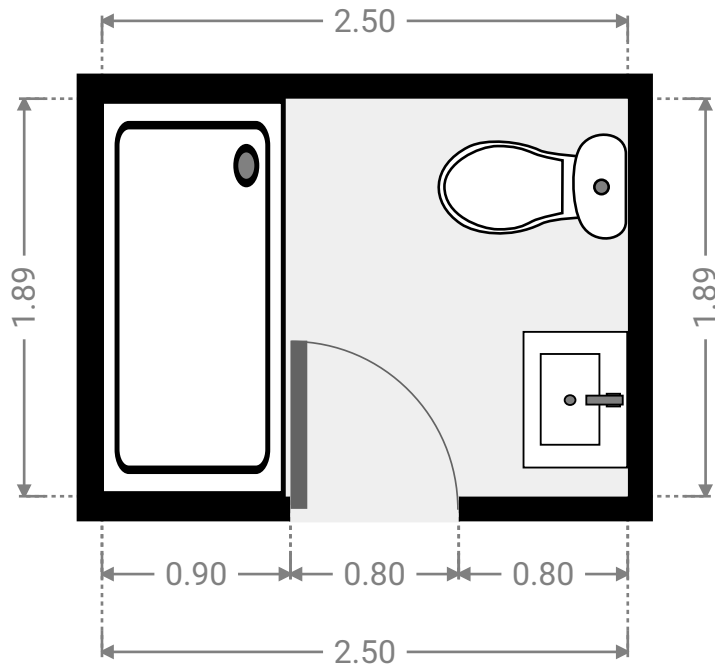
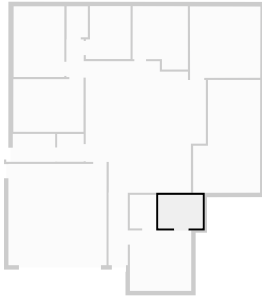
## ▼ Closet Ground Floor

WIDTH: 1.50 m • LENGTH: 1.90 m  
AREA: 2.85 m<sup>2</sup> • PERIMETER: 6.80 m



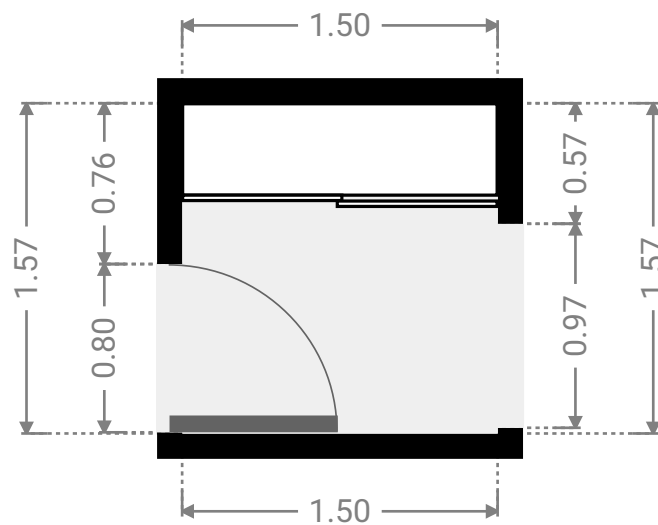
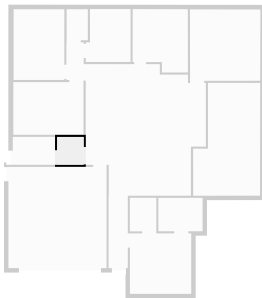
## ▼ Bathroom Ground Floor

WIDTH: 2.50 m • LENGTH: 1.89 m  
AREA: 4.72 m<sup>2</sup> • PERIMETER: 8.78 m



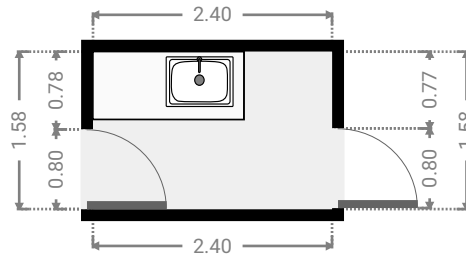
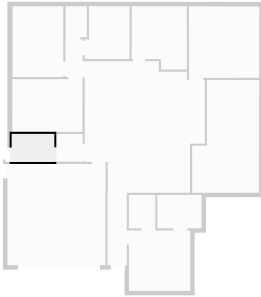
## ▼ Hall Ground Floor

WIDTH: 1.50 m • LENGTH: 1.57 m  
AREA: 2.36 m<sup>2</sup> • PERIMETER: 6.14 m



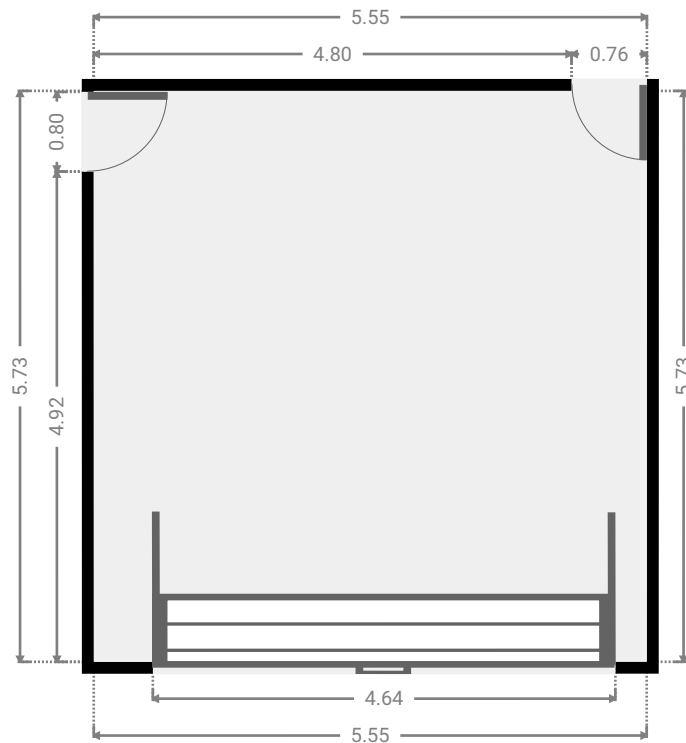
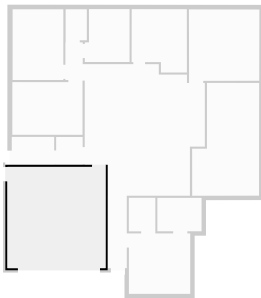
## ▼ Laundry Room Ground Floor

WIDTH: 2.40 m • LENGTH: 1.58 m  
AREA: 3.79 m<sup>2</sup> • PERIMETER: 7.96 m



## ▼ Garage Ground Floor

WIDTH: 5.55 m • LENGTH: 5.73 m  
AREA: 31.81 m<sup>2</sup> • PERIMETER: 22.56 m

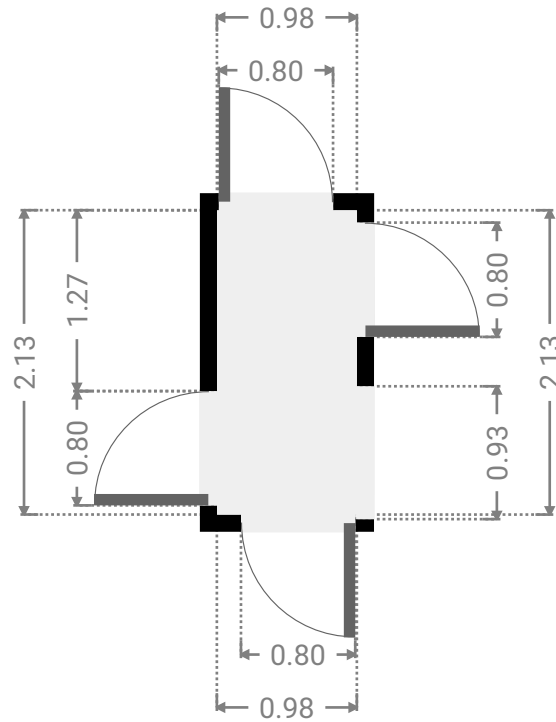


# 8 Argan Close

FLOORS: 1

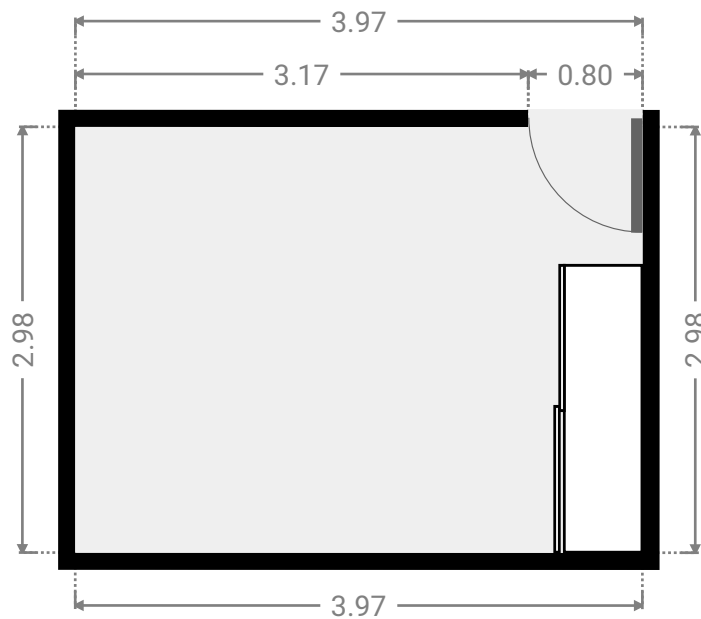
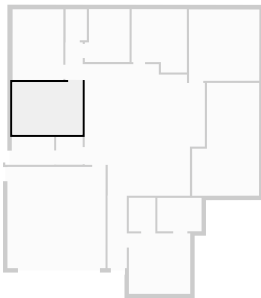
## ▼ Hall Ground Floor

WIDTH: 0.98 m • LENGTH: 2.13 m  
AREA: 2.09 m<sup>2</sup> • PERIMETER: 6.22 m



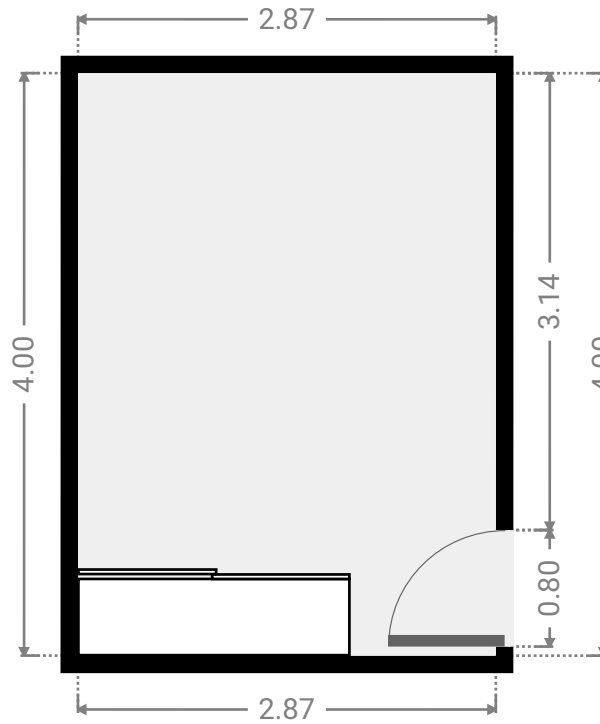
## ▼ Bedroom Ground Floor

WIDTH: 3.97 m • LENGTH: 2.98 m  
AREA: 11.83 m<sup>2</sup> • PERIMETER: 13.90 m



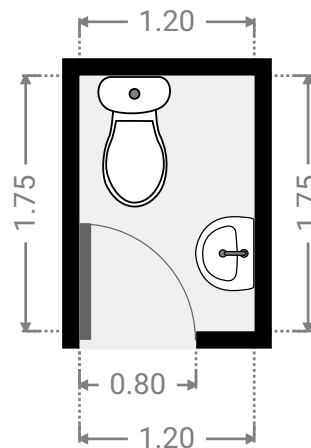
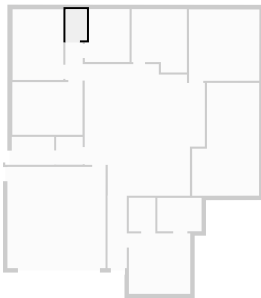
## ▼ Bedroom Ground Floor

WIDTH: 2.87 m • LENGTH: 4.00 m  
AREA: 11.48 m<sup>2</sup> • PERIMETER: 13.74 m



## ▼ Toilet Ground Floor

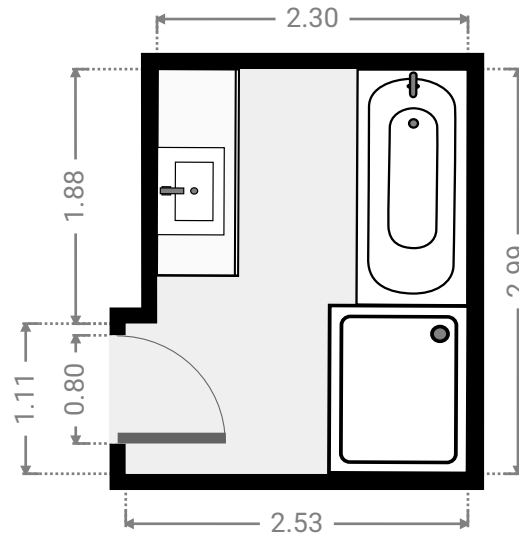
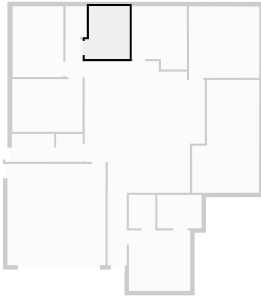
WIDTH: 1.20 m • LENGTH: 1.75 m  
AREA: 2.10 m<sup>2</sup> • PERIMETER: 5.91 m





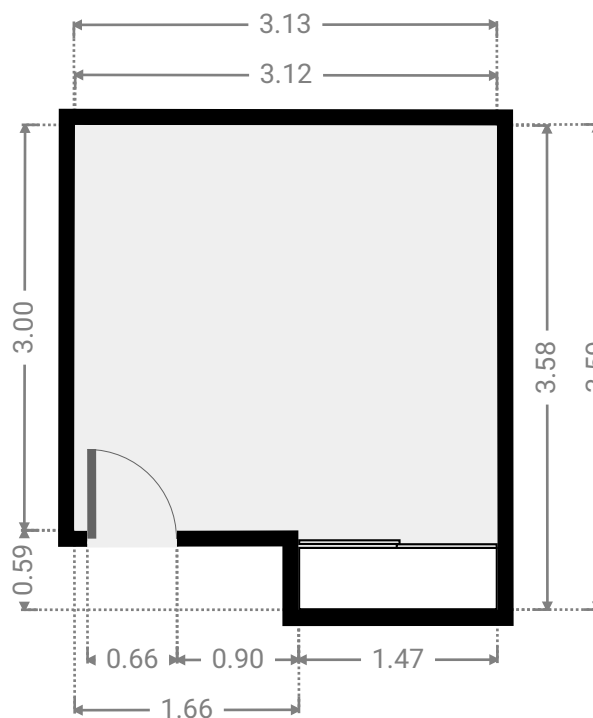
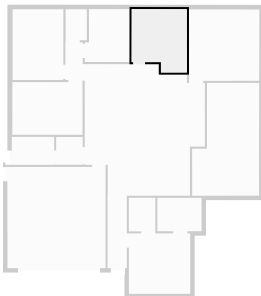
## ▼ Bathroom Ground Floor

WIDTH: 2.53 m • LENGTH: 2.99 m  
AREA: 7.14 m<sup>2</sup> • PERIMETER: 11.05 m



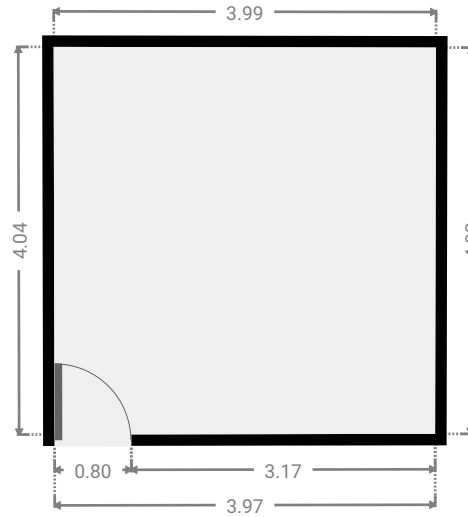
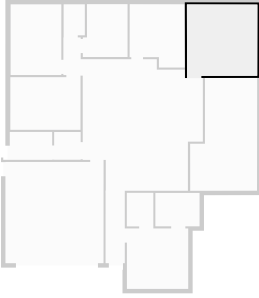
## ▼ Bedroom Ground Floor

WIDTH: 3.13 m • LENGTH: 3.59 m  
AREA: 10.22 m<sup>2</sup> • PERIMETER: 13.42 m



## ▼ Media Room Ground Floor

WIDTH: 3.99 m • LENGTH: 4.04 m  
AREA: 16.07 m<sup>2</sup> • PERIMETER: 16.03 m



## ▼ Other Ground Floor

WIDTH: 3.80 m • LENGTH: 6.39 m  
AREA: 21.07 m<sup>2</sup> • PERIMETER: 20.34 m

