

8/5 Kingfisher Parade

SUBMITTED BY

Ray White Rockhampton Casey
stockers@cqoz.com

CREATED ON

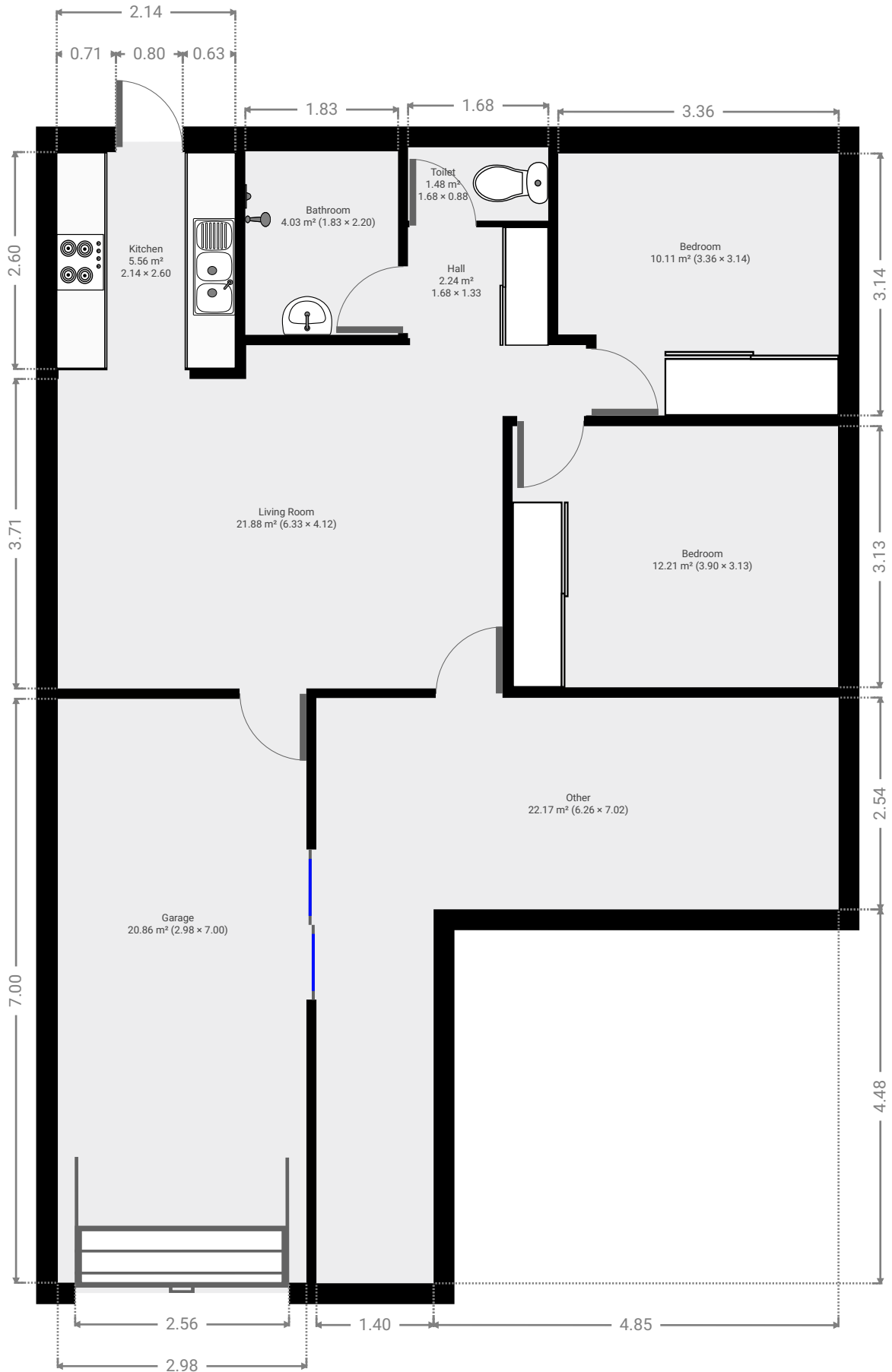
2022-01-27

Floors

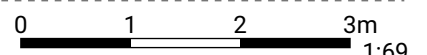
1

FLOORS: 1

▼ Ground Floor



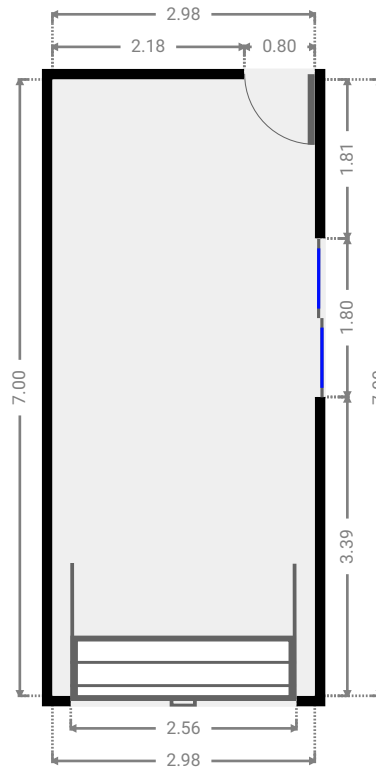
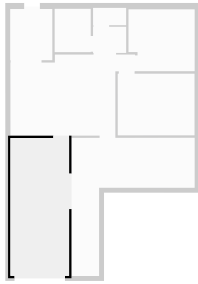
THIS FLOORPLAN IS PROVIDED WITHOUT WARRANTY OF ANY KIND. SENSOPIA DISCLAIMS ANY WARRANTY INCLUDING, WITHOUT LIMITATION, SATISFACTORY QUALITY OR ACCURACY OF DIMENSIONS.



FLOORS: 1

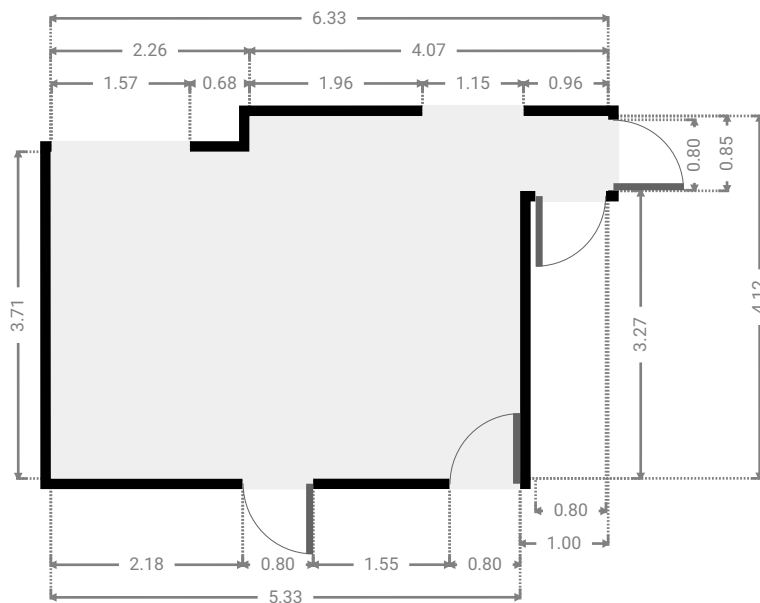
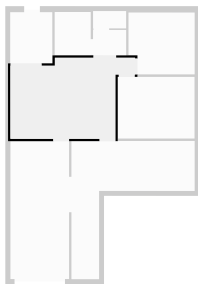
▼ **Garage**
Ground Floor

WIDTH: 2.98 m • LENGTH: 7.00 m
AREA: 20.86 m² • PERIMETER: 19.96 m



▼ **Living Room**
Ground Floor

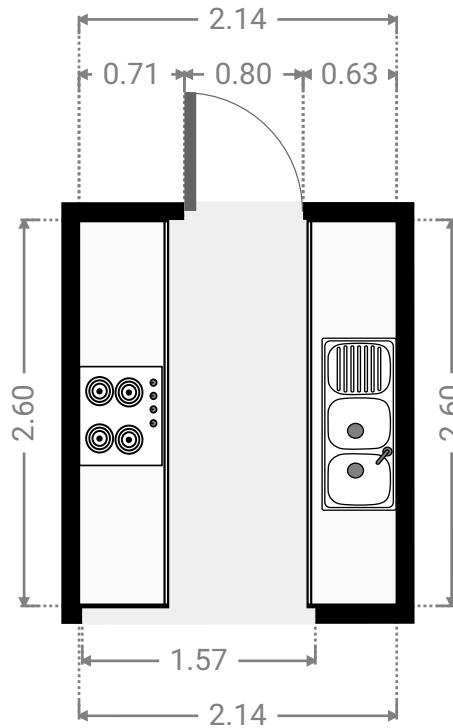
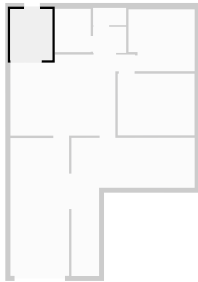
WIDTH: 6.33 m • LENGTH: 4.12 m
AREA: 21.88 m² • PERIMETER: 20.89 m



FLOORS: 1

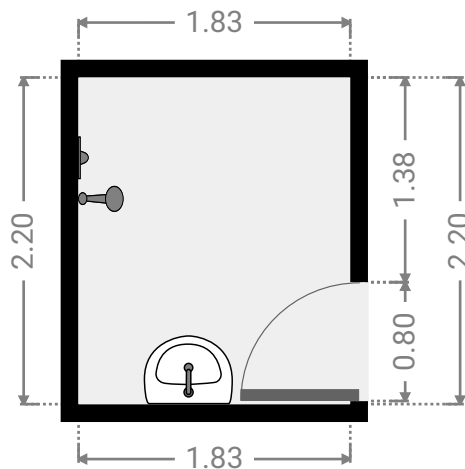
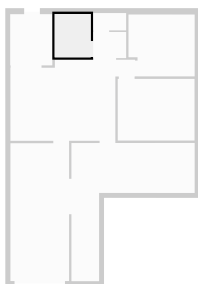
▼ Kitchen Ground Floor

WIDTH: 2.14 m • LENGTH: 2.60 m
AREA: 5.56 m² • PERIMETER: 9.48 m



▼ Bathroom Ground Floor

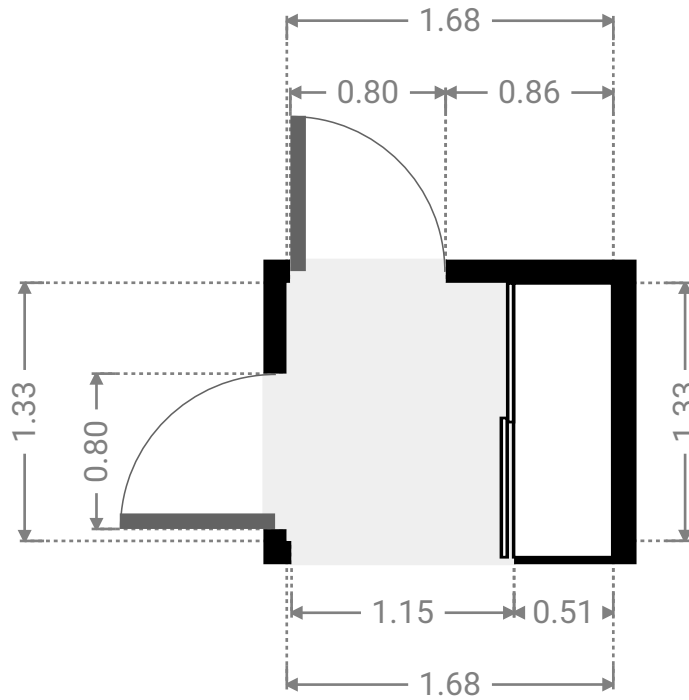
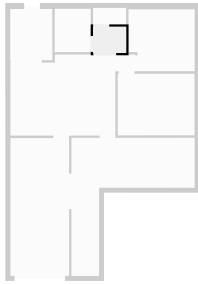
WIDTH: 1.83 m • LENGTH: 2.20 m
AREA: 4.03 m² • PERIMETER: 8.06 m



FLOORS: 1

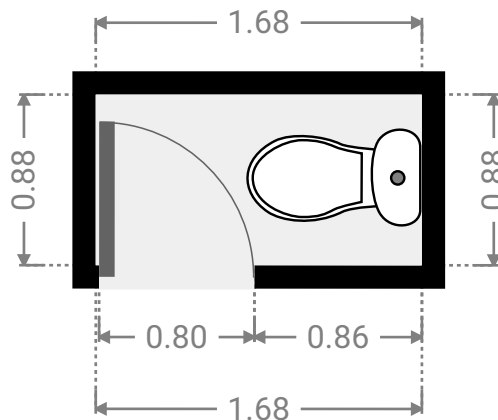
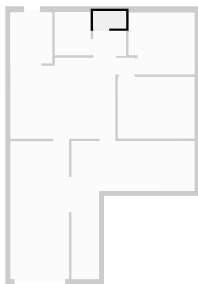
▼ Hall
Ground Floor

WIDTH: 1.68 m • LENGTH: 1.33 m
AREA: 2.24 m² • PERIMETER: 6.02 m



▼ Toilet
Ground Floor

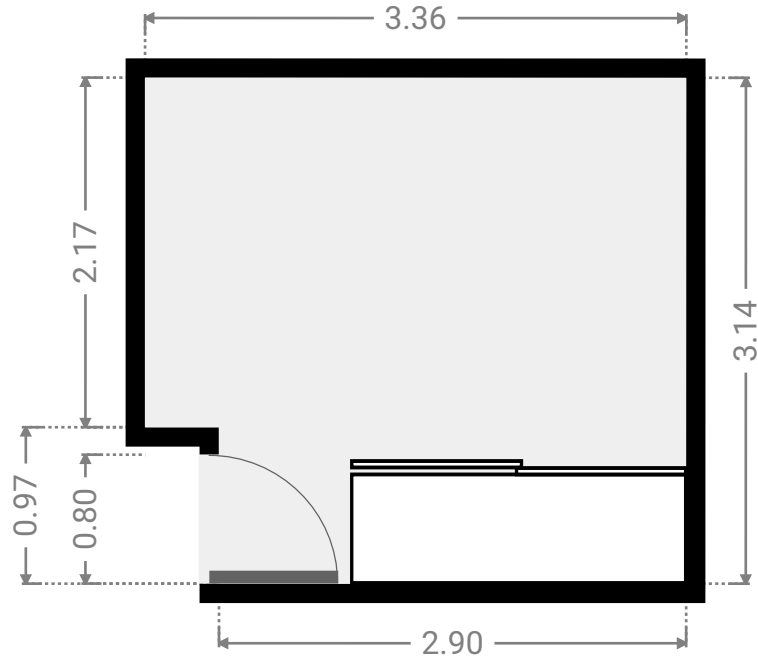
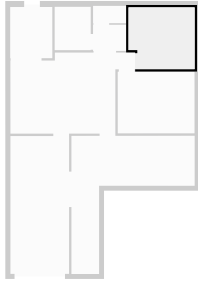
WIDTH: 1.68 m • LENGTH: 0.88 m
AREA: 1.48 m² • PERIMETER: 5.12 m



FLOORS: 1

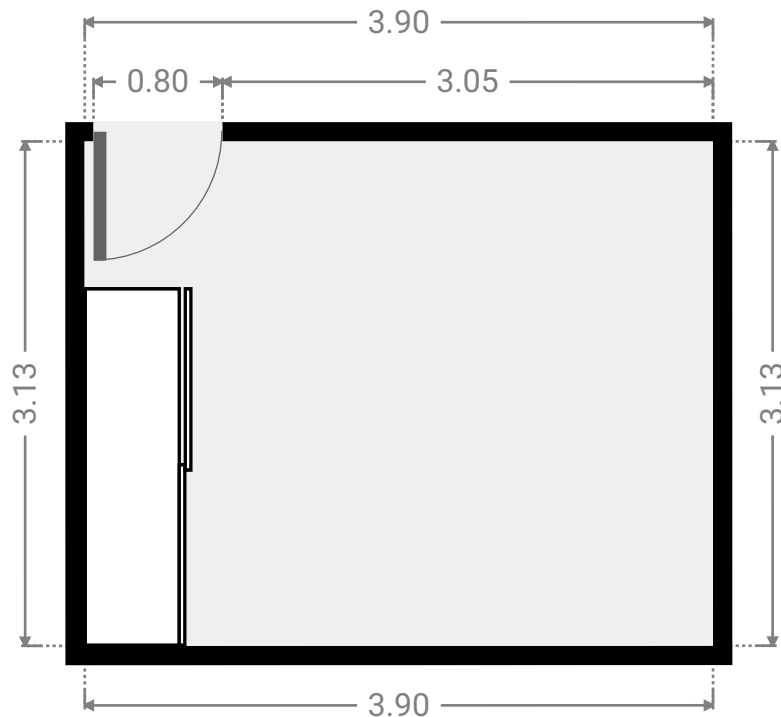
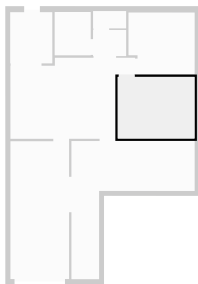
▼ **Bedroom**
Ground Floor

WIDTH: 3.36 m • LENGTH: 3.14 m
AREA: 10.11 m² • PERIMETER: 13.00 m



▼ **Bedroom**
Ground Floor

WIDTH: 3.90 m • LENGTH: 3.13 m
AREA: 12.21 m² • PERIMETER: 14.06 m



FLOORS: 1

▼ Other Ground Floor

WIDTH: 6.26 m • LENGTH: 7.02 m
AREA: 22.17 m² • PERIMETER: 26.56 m

