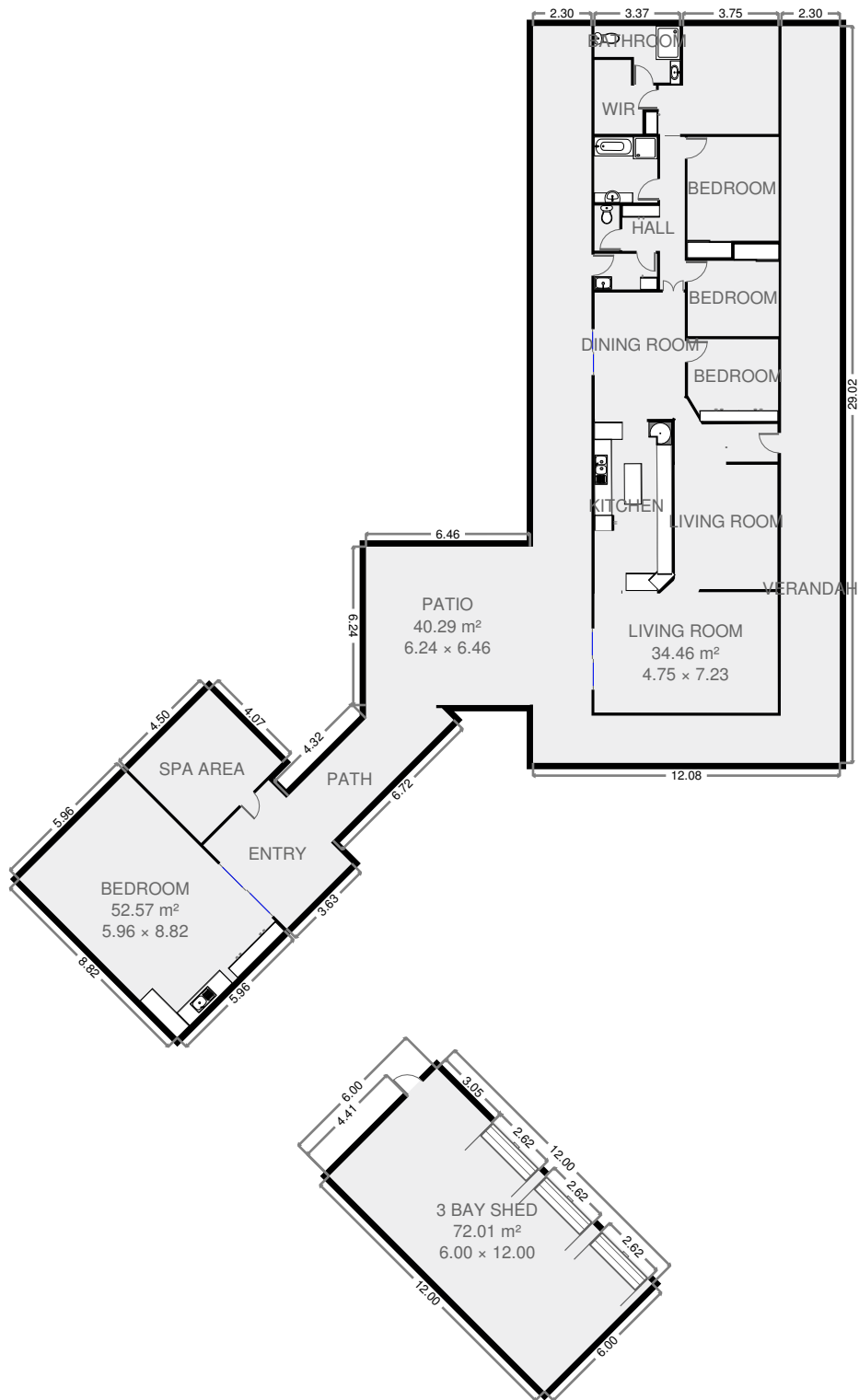
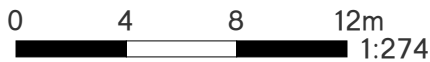


# Ground Floor



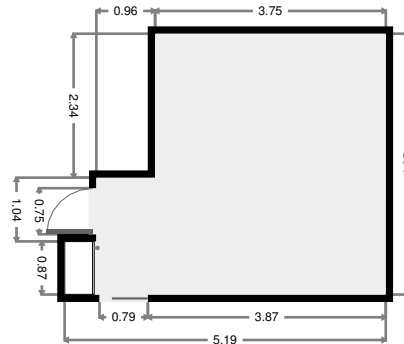
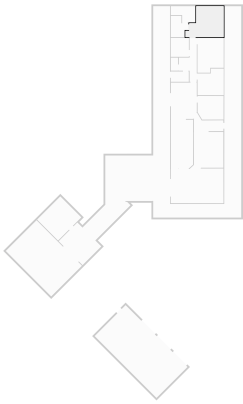
THIS FLOORPLAN IS PROVIDED WITHOUT WARRANTY OF ANY KIND. SENSOPIA DISCLAIMS ANY WARRANTY INCLUDING, WITHOUT LIMITATION, SATISFACTORY QUALITY OR ACCURACY OF DIMENSIONS.



## 75 Fons Drive

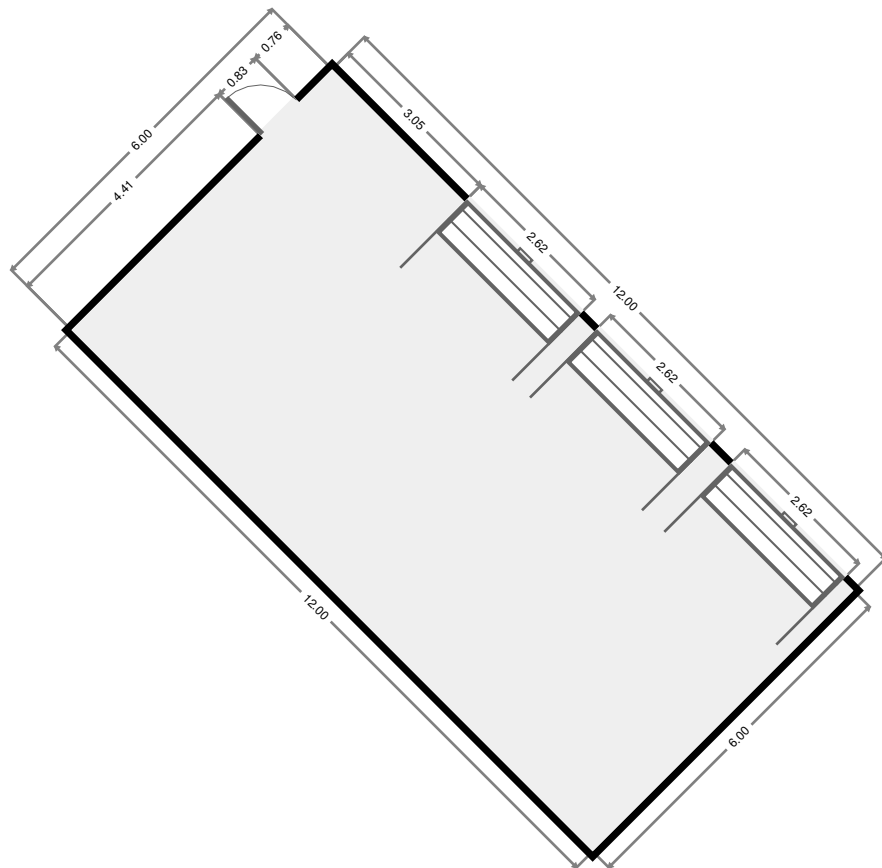
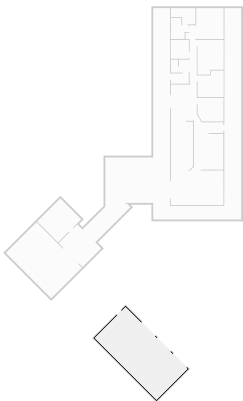
# Master Bedroom

Width: 4.25 m  
 Length: 5.23 m  
 Area: 18.20 m<sup>2</sup>  
 Perimeter: 18.95 m



# 3 Bay Shed

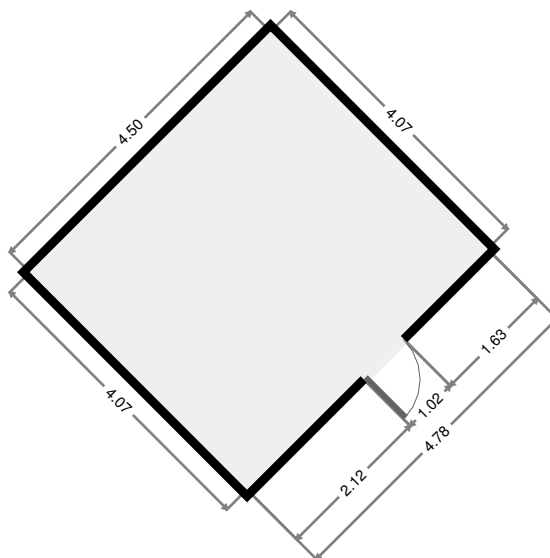
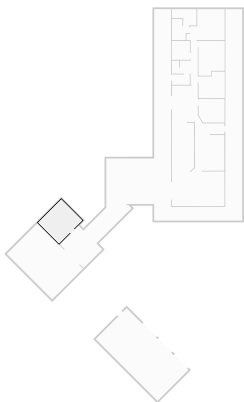
Width: 6.00 m  
 Length: 12.00 m  
 Area: 72.01 m<sup>2</sup>  
 Perimeter: 36.00 m



THIS FLOORPLAN IS PROVIDED WITHOUT WARRANTY OF ANY KIND. SENSOPIA DISCLAIMS ANY WARRANTY INCLUDING, WITHOUT LIMITATION, SATISFACTORY QUALITY OR ACCURACY OF DIMENSIONS.

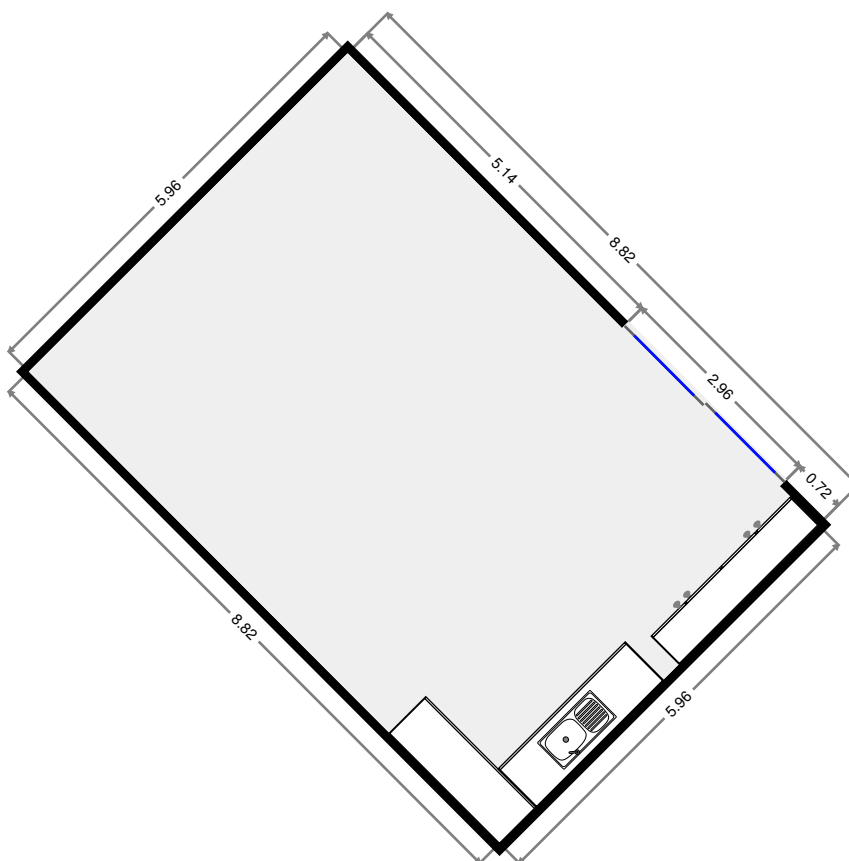
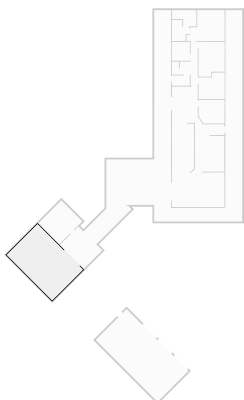
# Spa Area

Width: 4.07 m  
 Length: 4.50 m  
 Area: 18.30 m<sup>2</sup>  
 Perimeter: 17.13 m



# Bedroom

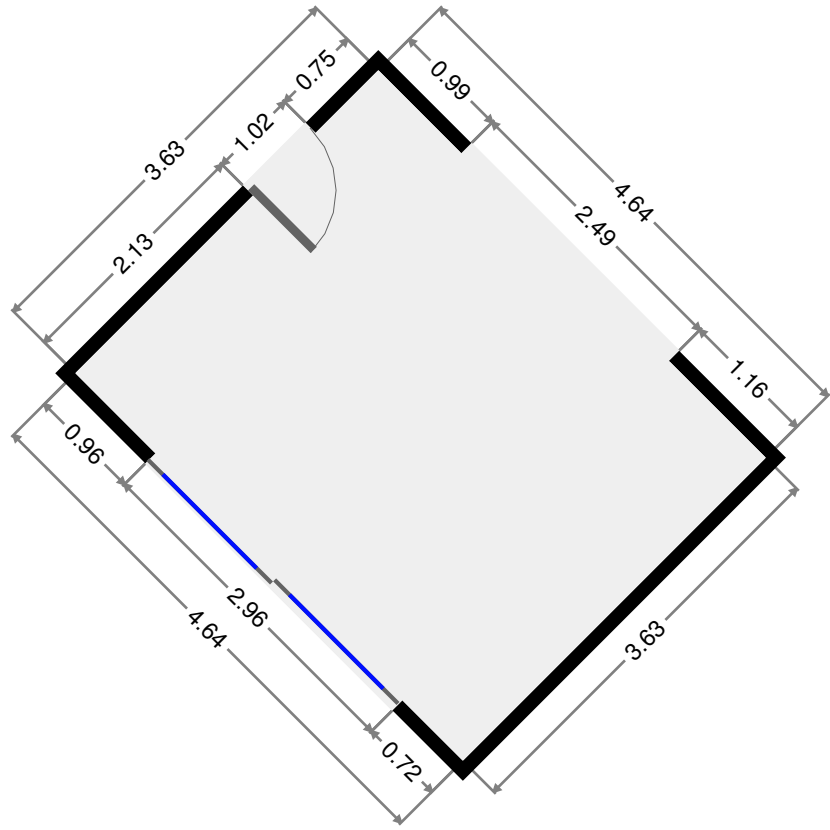
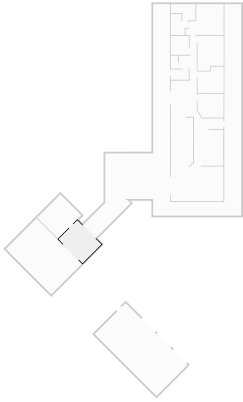
Width: 5.96 m  
 Length: 8.82 m  
 Area: 52.57 m<sup>2</sup>  
 Perimeter: 29.56 m



THIS FLOORPLAN IS PROVIDED WITHOUT WARRANTY OF ANY KIND. SENSOPIA DISCLAIMS ANY WARRANTY INCLUDING, WITHOUT LIMITATION, SATISFACTORY QUALITY OR ACCURACY OF DIMENSIONS.

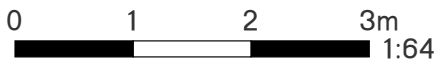
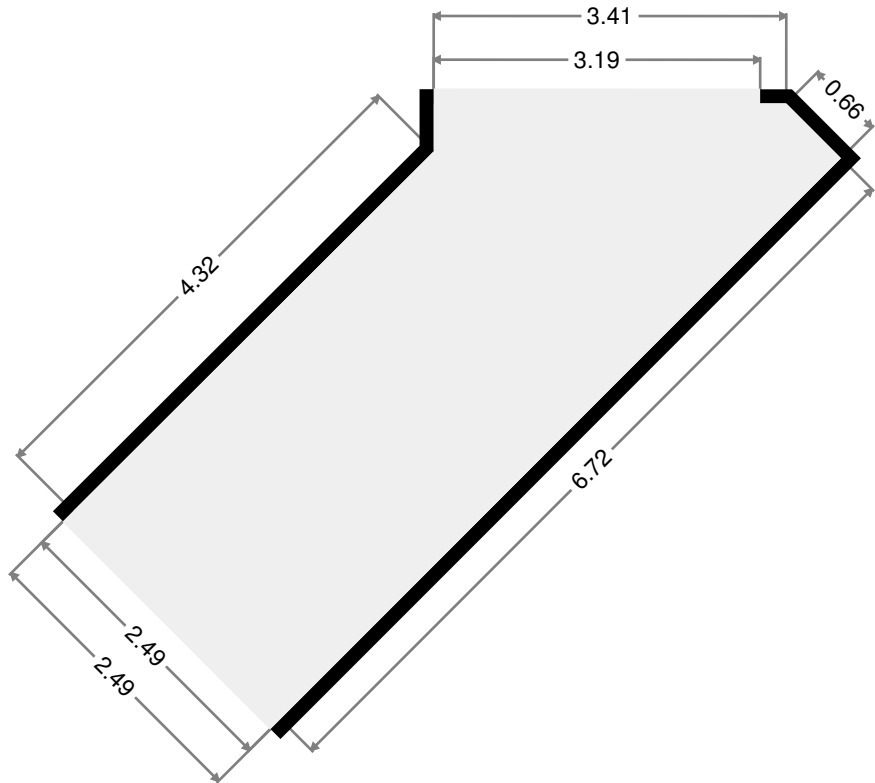
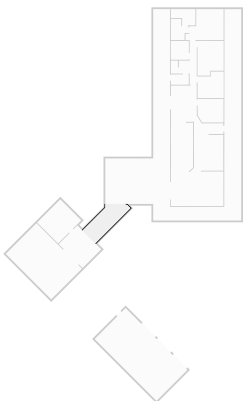
# Entry

Width: 3.63 m  
 Length: 4.64 m  
 Area: 16.84 m<sup>2</sup>  
 Perimeter: 16.54 m



# Path

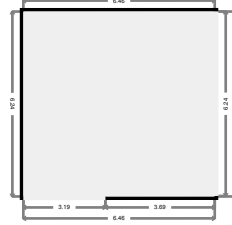
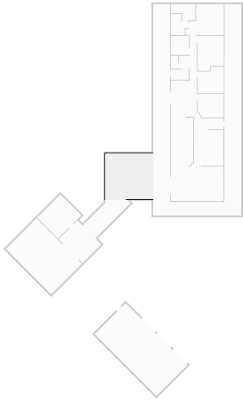
Width: 2.49 m  
 Length: 6.72 m  
 Area: 15.09 m<sup>2</sup>  
 Perimeter: 17.57 m  
 Ceiling Height: 2.17 m



THIS FLOORPLAN IS PROVIDED WITHOUT WARRANTY OF ANY KIND. SENSOPIA DISCLAIMS ANY WARRANTY INCLUDING, WITHOUT LIMITATION, SATISFACTORY QUALITY OR ACCURACY OF DIMENSIONS.

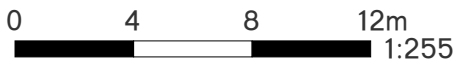
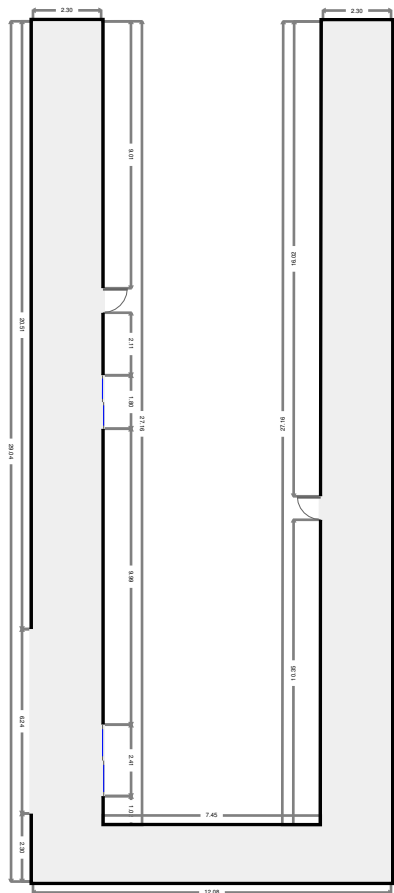
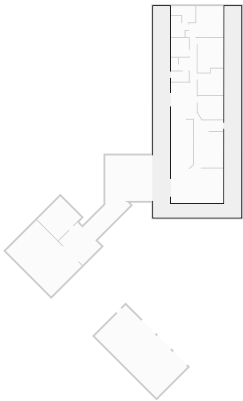
# Patio

Width: 6.24 m  
 Length: 6.46 m  
 Area: 40.29 m<sup>2</sup>  
 Perimeter: 25.39 m



# Verandah

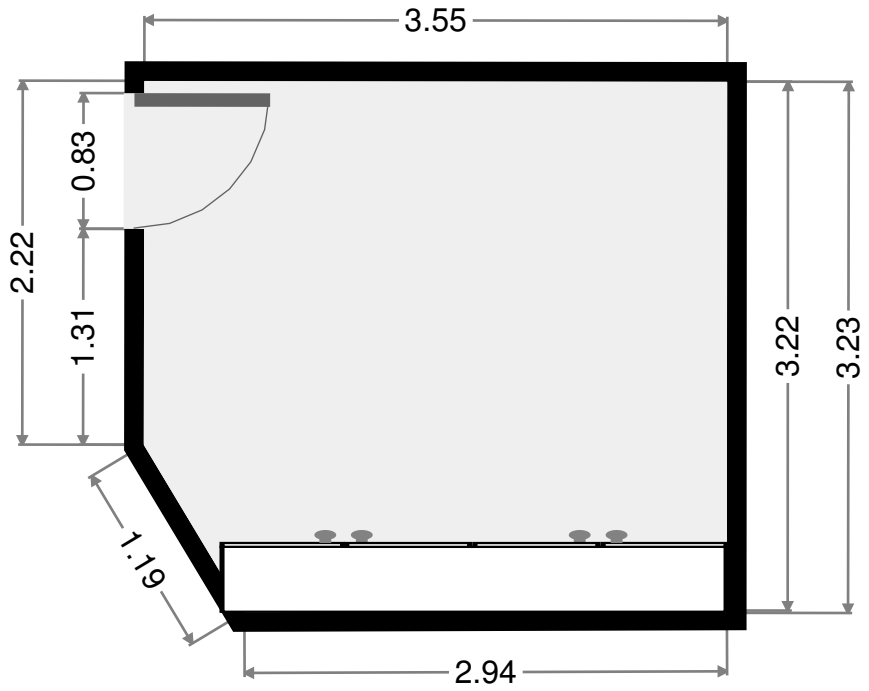
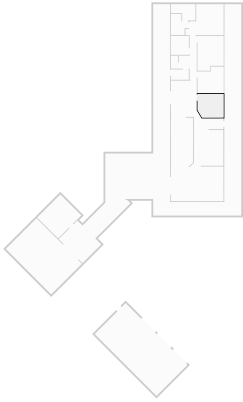
Width: 12.08 m  
 Length: 29.02 m  
 Area: 147.75 m<sup>2</sup>  
 Perimeter: 136.50 m



THIS FLOORPLAN IS PROVIDED WITHOUT WARRANTY OF ANY KIND. SENSOPIA DISCLAIMS ANY WARRANTY INCLUDING, WITHOUT LIMITATION, SATISFACTORY QUALITY OR ACCURACY OF DIMENSIONS.

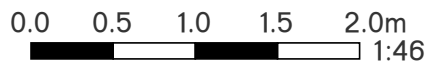
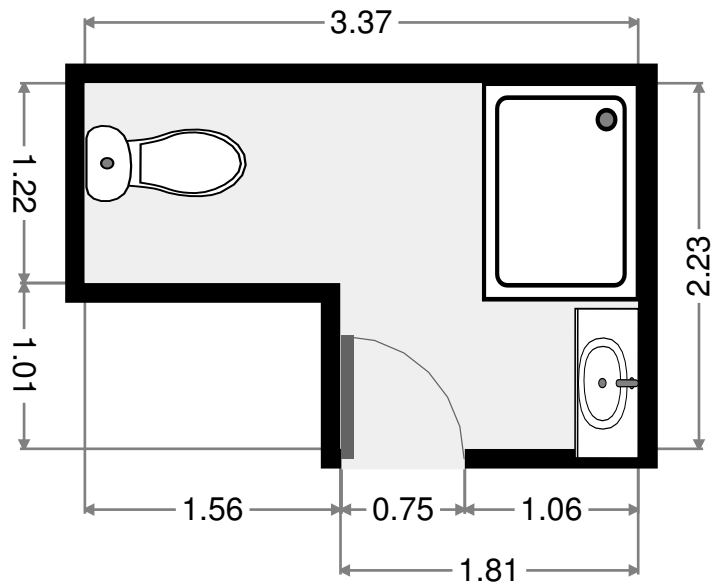
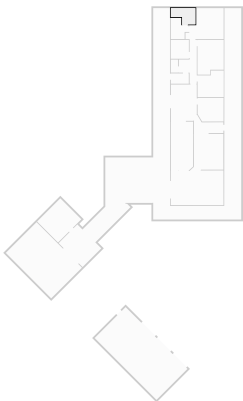
# Bedroom

Width: 3.23 m  
 Length: 3.55 m  
 Area: 11.14 m<sup>2</sup>  
 Perimeter: 13.11 m



# Bathroom

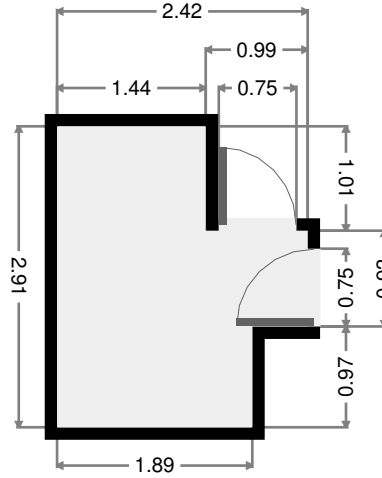
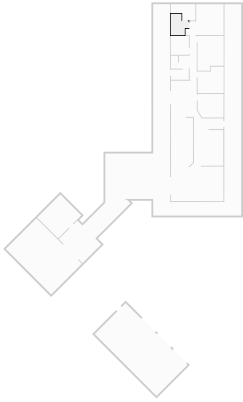
Width: 2.23 m  
 Length: 3.37 m  
 Area: 5.92 m<sup>2</sup>  
 Perimeter: 11.19 m



THIS FLOORPLAN IS PROVIDED WITHOUT WARRANTY OF ANY KIND. SENSOPIA DISCLAIMS ANY WARRANTY INCLUDING, WITHOUT LIMITATION, SATISFACTORY QUALITY OR ACCURACY OF DIMENSIONS.

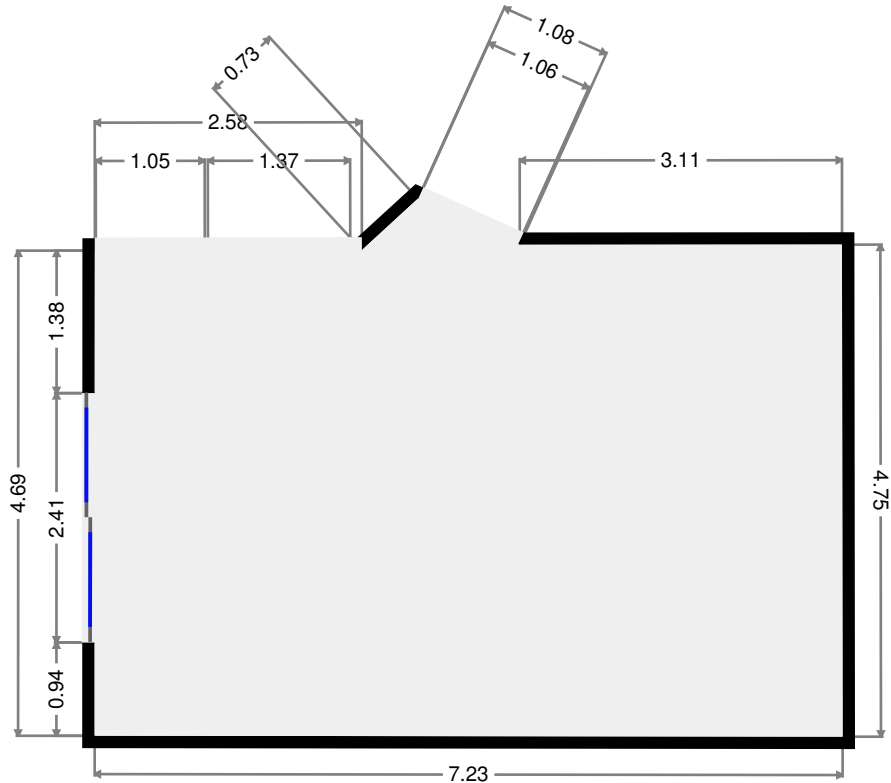
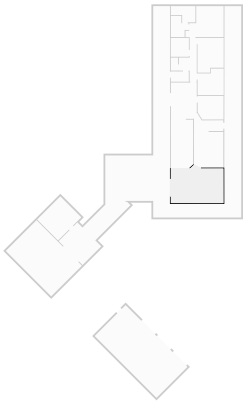
# WIR

Width: 2.42 m  
 Length: 2.91 m  
 Area: 5.52 m<sup>2</sup>  
 Perimeter: 10.66 m



# Living Room

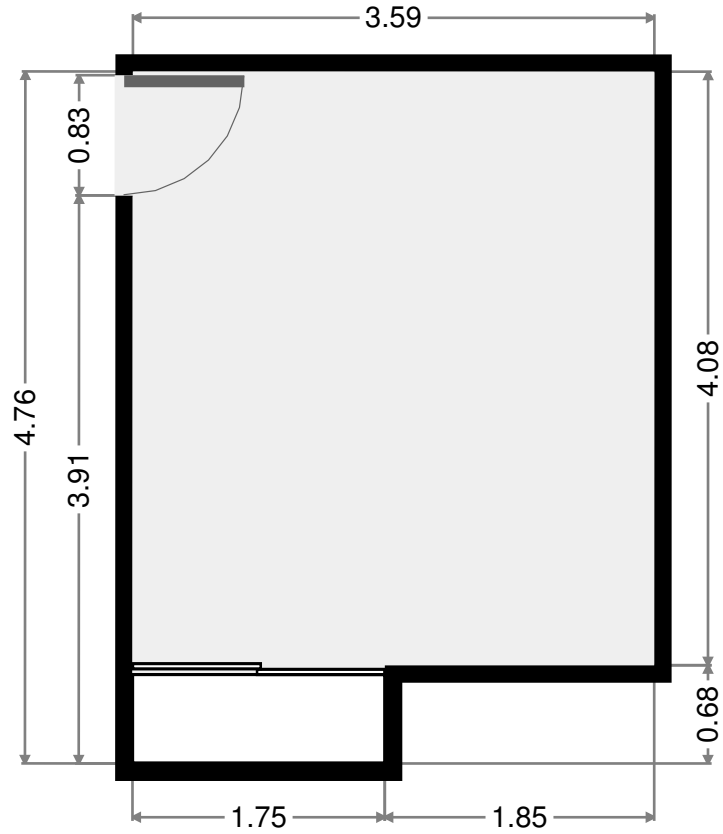
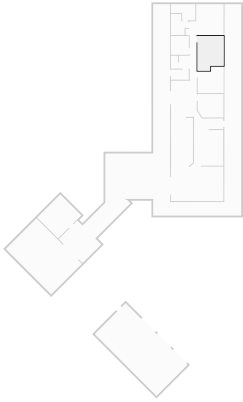
Width: 4.75 m  
 Length: 7.23 m  
 Area: 34.46 m<sup>2</sup>  
 Perimeter: 24.17 m



THIS FLOORPLAN IS PROVIDED WITHOUT WARRANTY OF ANY KIND. SENSOPIA DISCLAIMS ANY WARRANTY INCLUDING, WITHOUT LIMITATION, SATISFACTORY QUALITY OR ACCURACY OF DIMENSIONS.

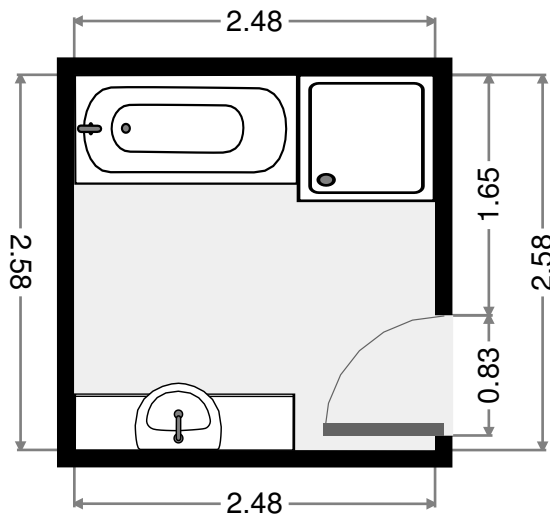
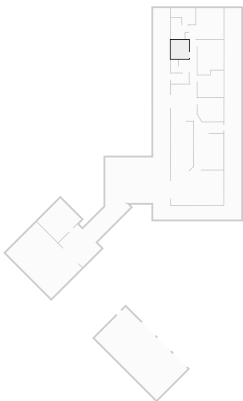
# Bedroom

Width: 3.59 m  
 Length: 4.76 m  
 Area: 15.83 m<sup>2</sup>  
 Perimeter: 16.70 m



# Bathroom

Width: 2.48 m  
 Length: 2.58 m  
 Area: 6.41 m<sup>2</sup>  
 Perimeter: 10.13 m

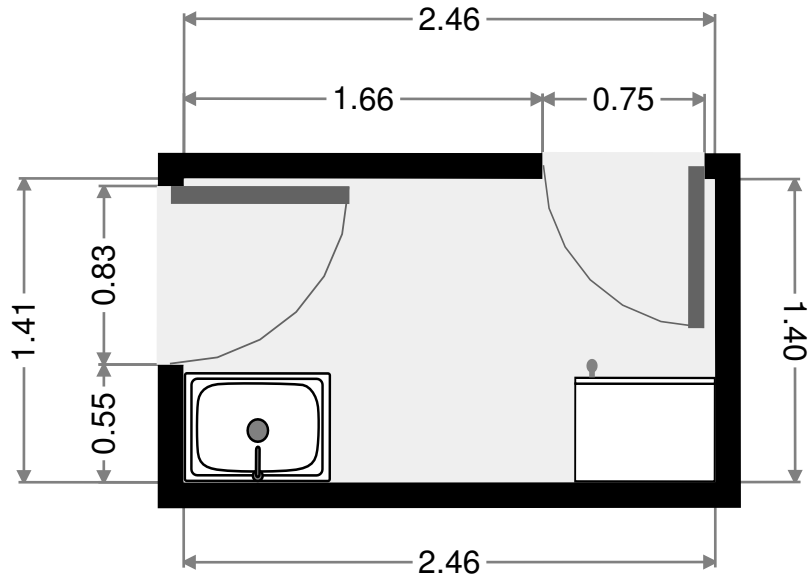
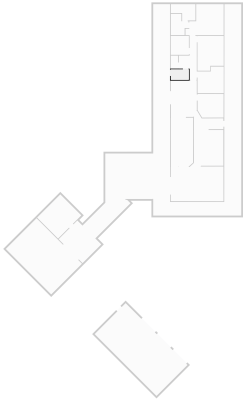


THIS FLOORPLAN IS PROVIDED WITHOUT WARRANTY OF ANY KIND. SENSOPIA DISCLAIMS ANY WARRANTY INCLUDING, WITHOUT LIMITATION, SATISFACTORY QUALITY OR ACCURACY OF DIMENSIONS.



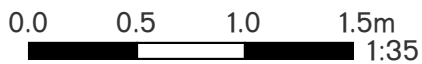
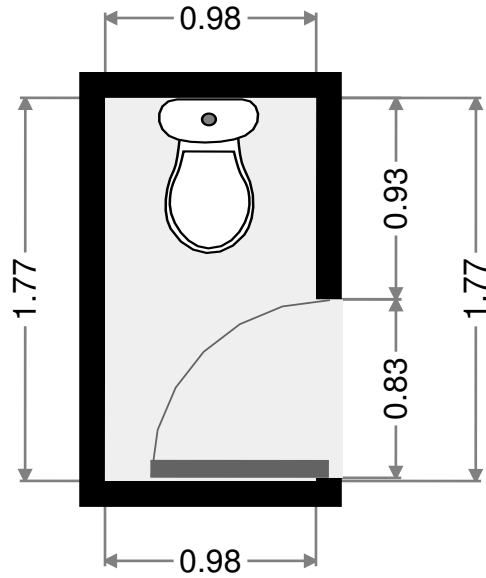
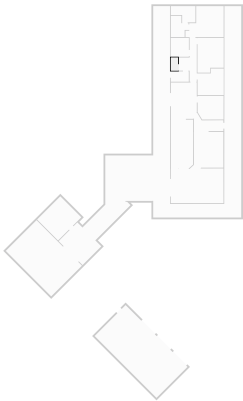
# Laundry Room

Width: 1.41 m  
 Length: 2.46 m  
 Area: 3.46 m<sup>2</sup>  
 Perimeter: 7.73 m



# Toilet

Width: 0.98 m  
 Length: 1.77 m  
 Area: 1.73 m<sup>2</sup>  
 Perimeter: 5.50 m

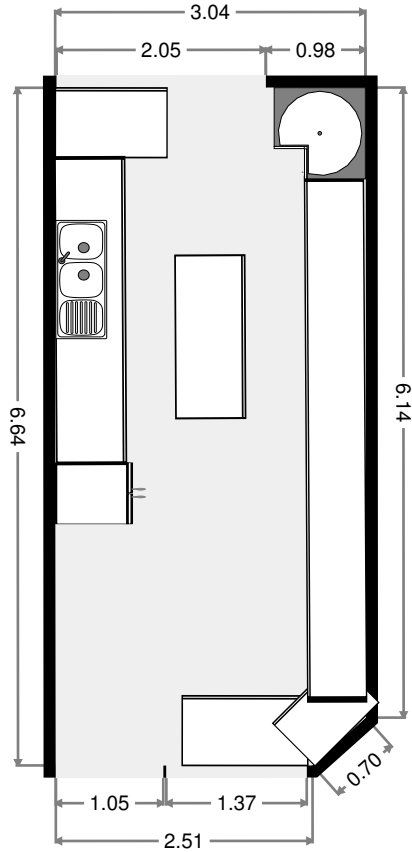
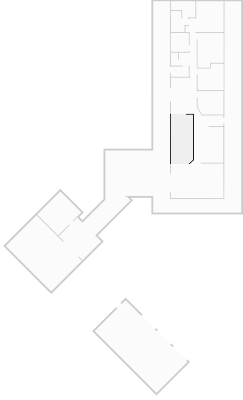


THIS FLOORPLAN IS PROVIDED WITHOUT WARRANTY OF ANY KIND. SENSOPIA DISCLAIMS ANY WARRANTY INCLUDING, WITHOUT LIMITATION, SATISFACTORY QUALITY OR ACCURACY OF DIMENSIONS.



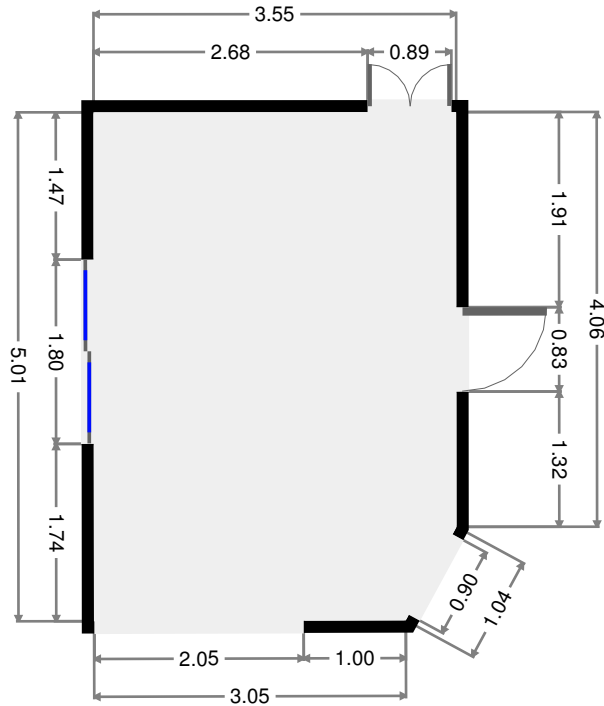
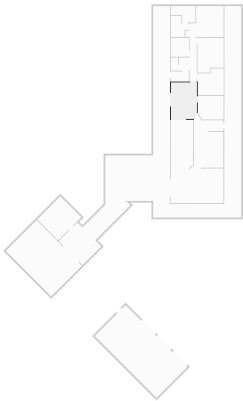
# Kitchen

Width: 3.04 m  
 Length: 6.64 m  
 Area: 20.03 m<sup>2</sup>  
 Perimeter: 19.06 m  
 Ceiling Height: 2.17 m



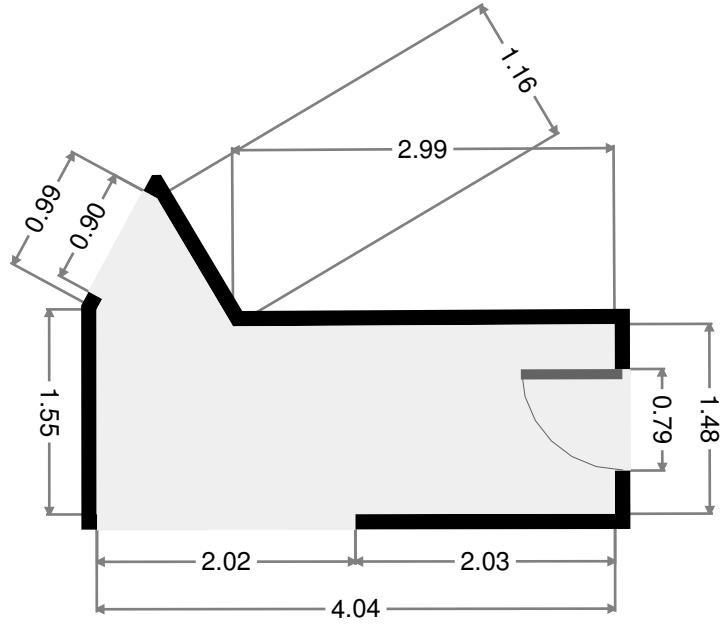
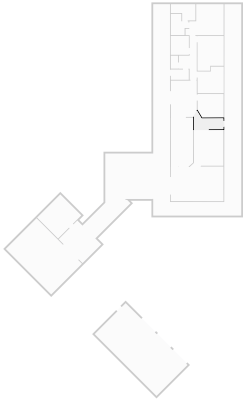
# Dining Room

Width: 3.55 m  
 Length: 4.98 m  
 Area: 17.45 m<sup>2</sup>  
 Perimeter: 16.69 m



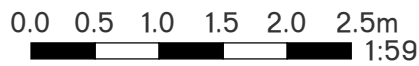
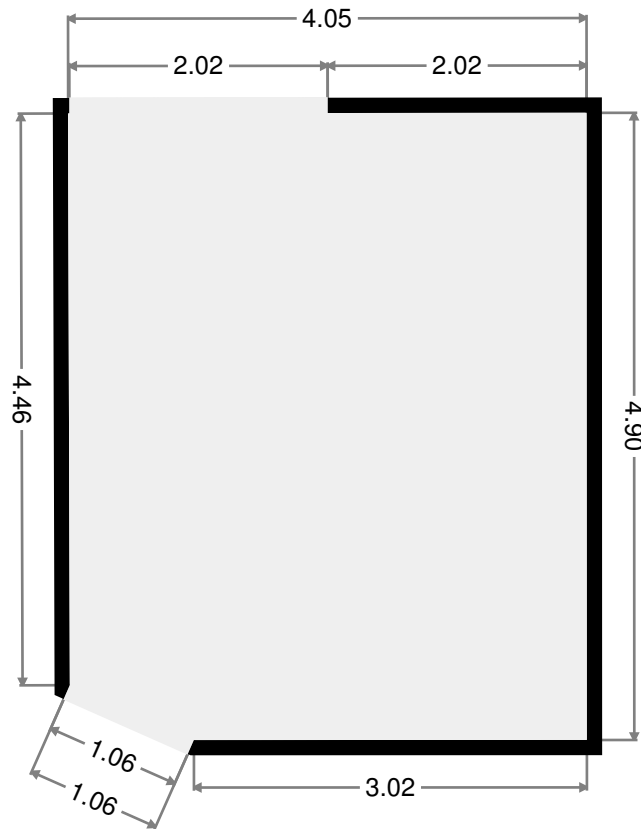
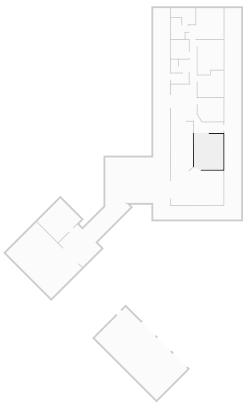
THIS FLOORPLAN IS PROVIDED WITHOUT WARRANTY OF ANY KIND. SENSOPIA DISCLAIMS ANY WARRANTY INCLUDING, WITHOUT LIMITATION, SATISFACTORY QUALITY OR ACCURACY OF DIMENSIONS.

- Width: 1.55 m  
 Length: 4.04 m  
 Area: 6.52 m<sup>2</sup>  
 Perimeter: 12.26 m  
 Ceiling Height: 2.17 m



## Living Room

- Width: 4.05 m  
 Length: 4.90 m  
 Area: 19.57 m<sup>2</sup>  
 Perimeter: 17.53 m



THIS FLOORPLAN IS PROVIDED WITHOUT WARRANTY OF ANY KIND. SENSOPIA DISCLAIMS ANY WARRANTY INCLUDING, WITHOUT LIMITATION, SATISFACTORY QUALITY OR ACCURACY OF DIMENSIONS.