

74 Campbell Street

SUBMITTED BY

Ray White Rockhampton Casey
stockers@cqoz.com

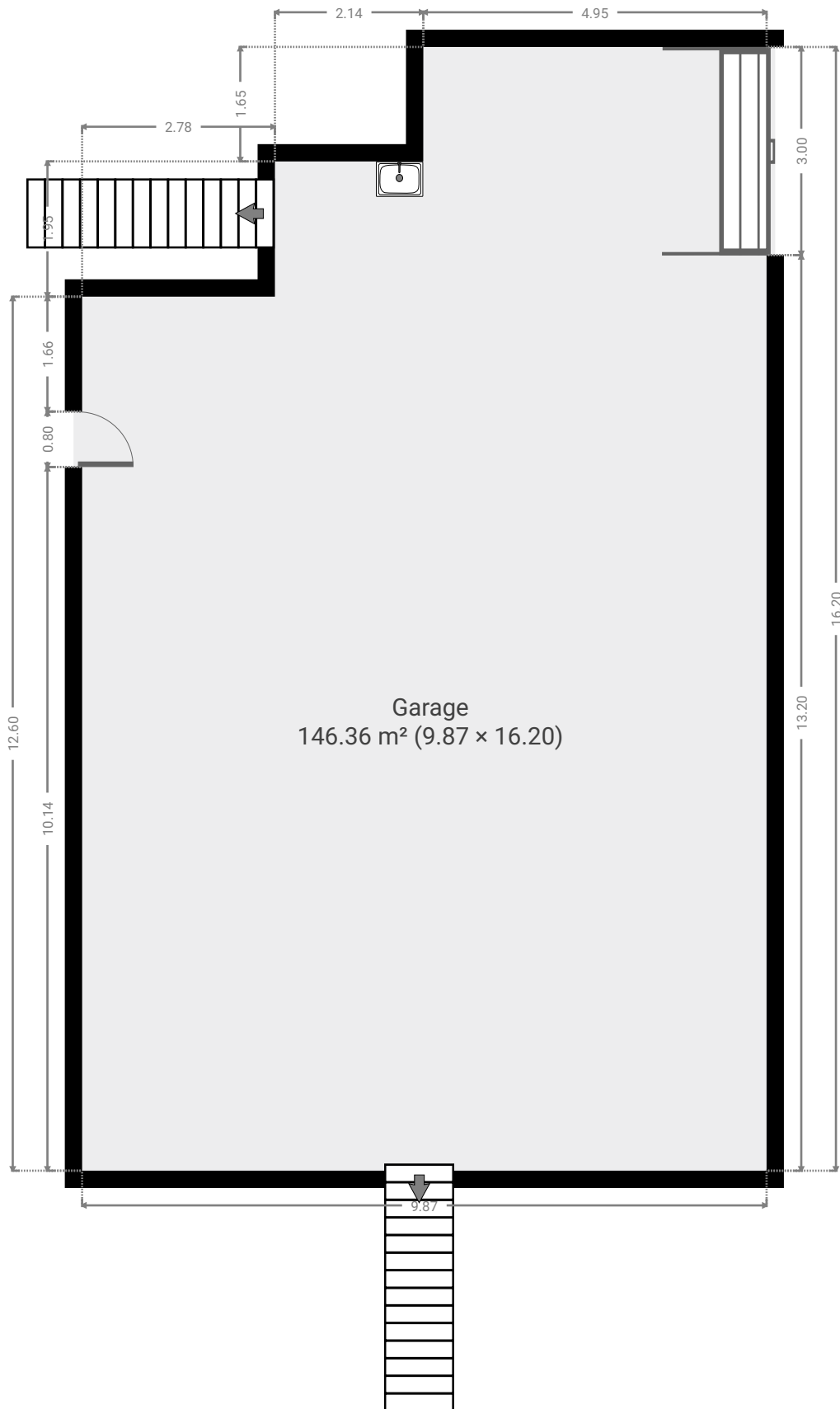
CREATED ON

2022-06-07

Floors

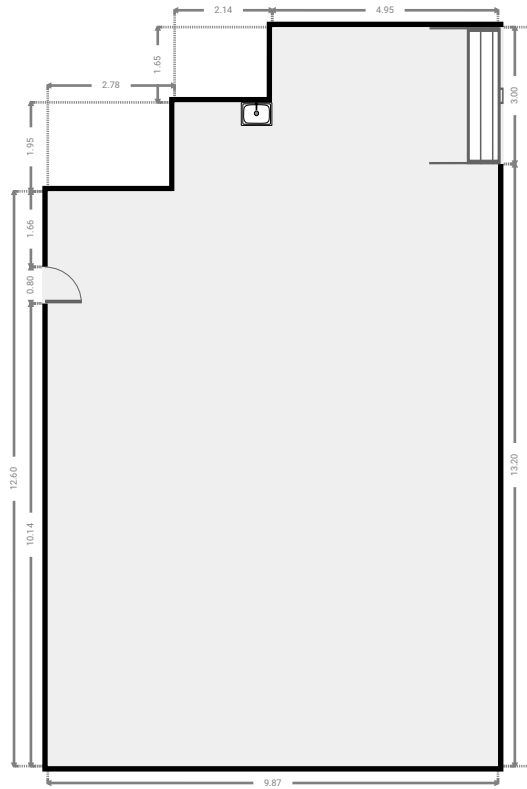
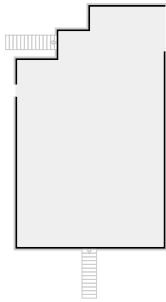
2

▼ Ground Floor

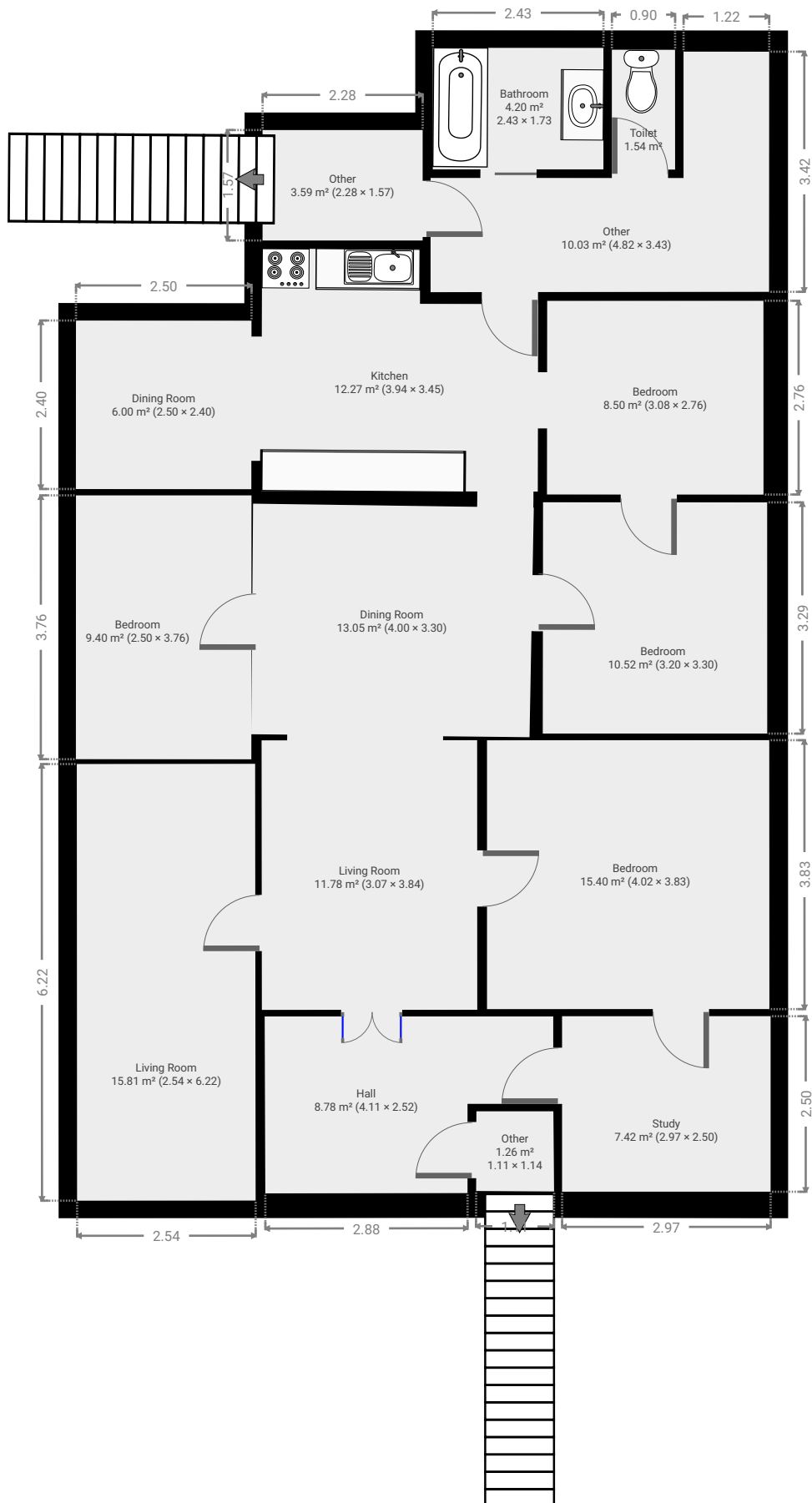


▼ Garage Ground Floor

WIDTH: 9.87 m • LENGTH: 16.20 m
AREA: 146.36 m² • PERIMETER: 52.14 m

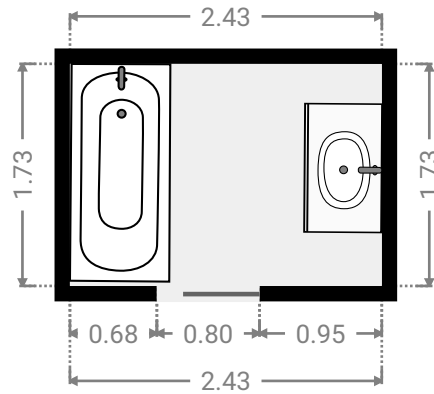
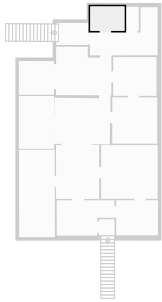


▼ 1st Floor



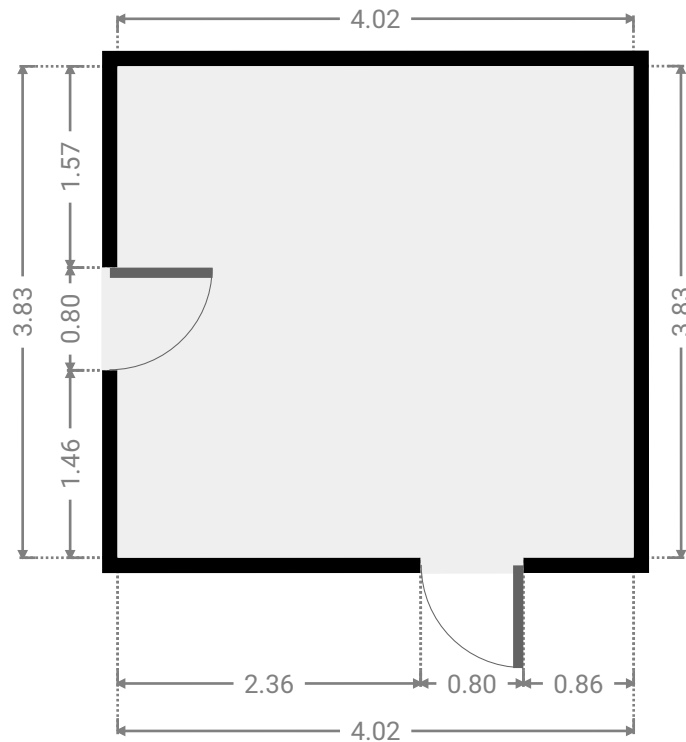
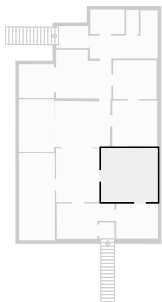
▼ **Bathroom**
1st Floor

WIDTH: 2.43 m • LENGTH: 1.73 m
AREA: 4.20 m² • PERIMETER: 8.32 m



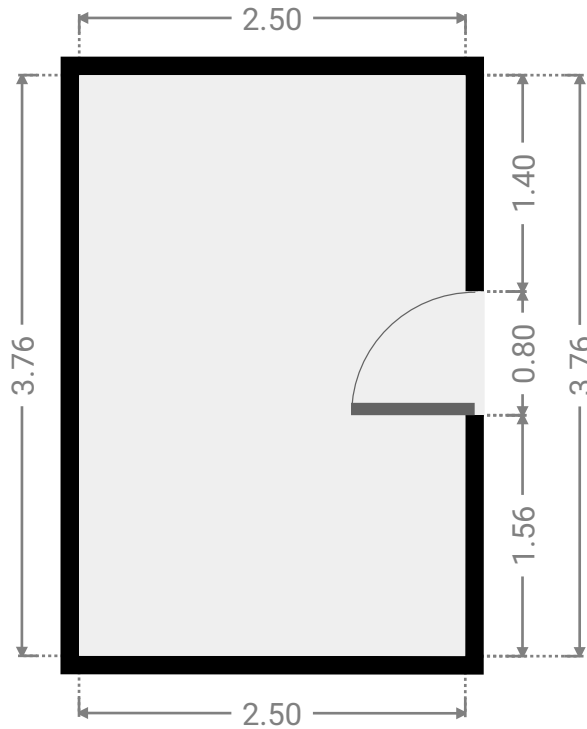
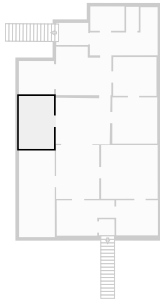
▼ **Bedroom**
1st Floor

WIDTH: 4.02 m • LENGTH: 3.83 m
AREA: 15.40 m² • PERIMETER: 15.70 m



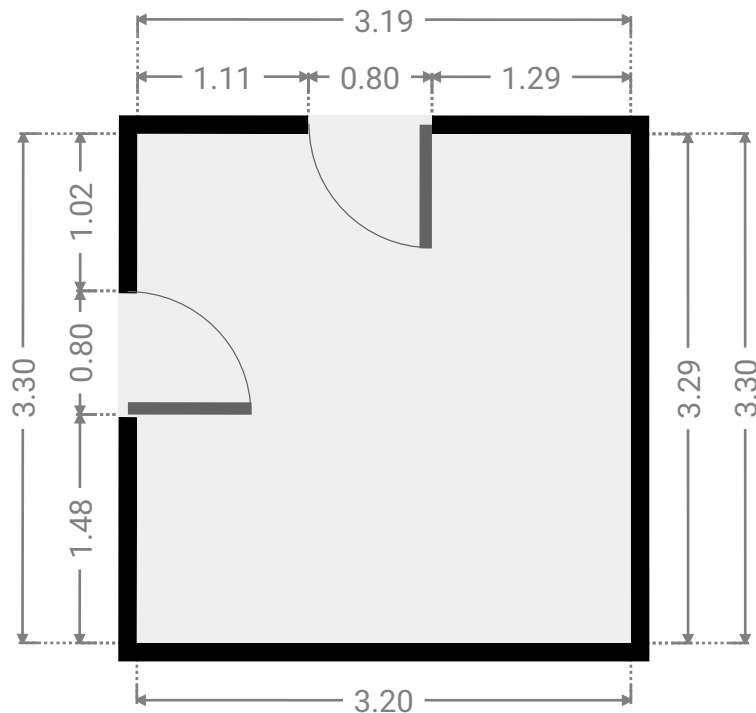
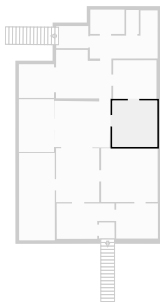
▼ **Bedroom**
1st Floor

WIDTH: 2.50 m • LENGTH: 3.76 m
AREA: 9.40 m² • PERIMETER: 12.52 m



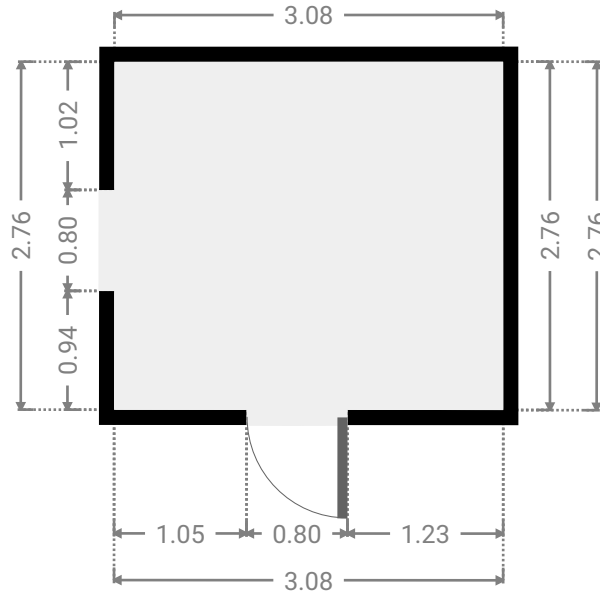
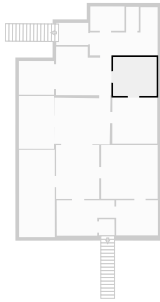
▼ **Bedroom**
1st Floor

WIDTH: 3.20 m • LENGTH: 3.30 m
AREA: 10.52 m² • PERIMETER: 12.98 m



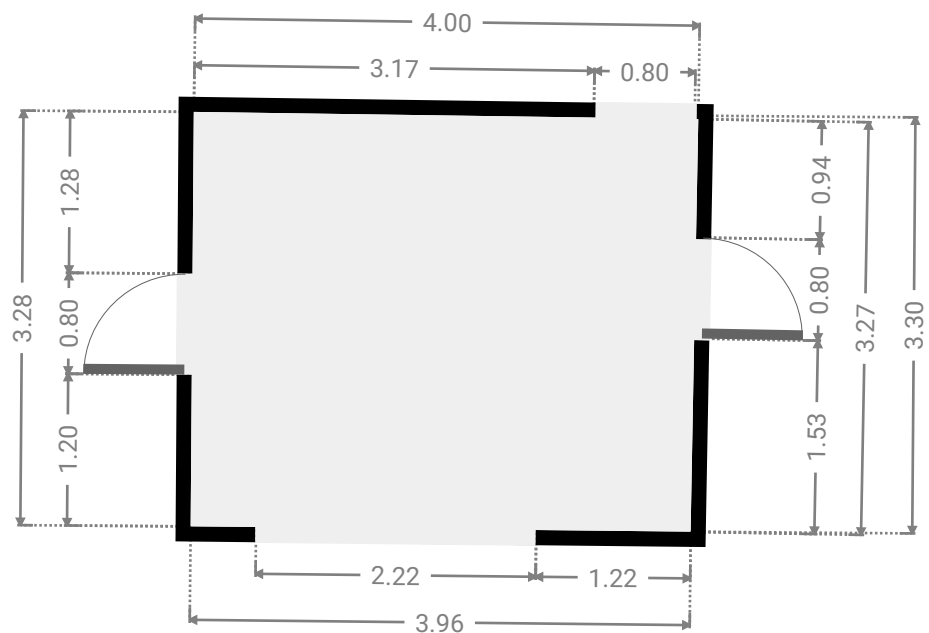
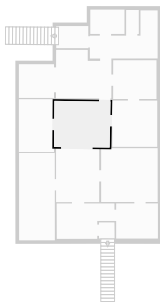
▼ **Bedroom**
1st Floor

WIDTH: 3.08 m • LENGTH: 2.76 m
AREA: 8.50 m² • PERIMETER: 11.68 m



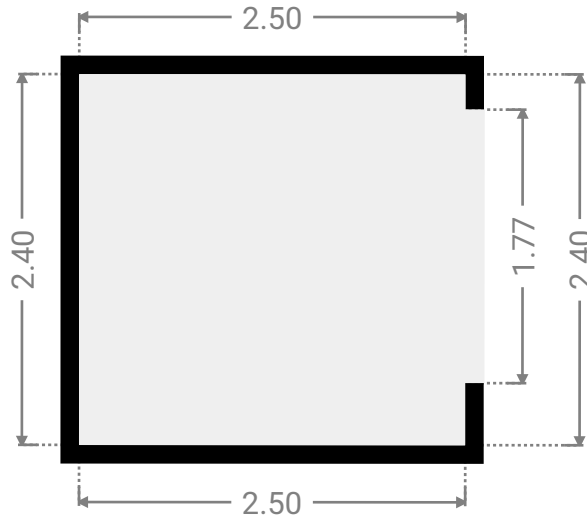
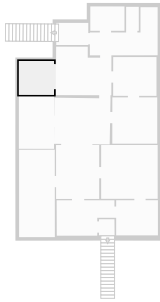
▼ **Dining Room**
1st Floor

WIDTH: 4.00 m • LENGTH: 3.30 m
AREA: 13.05 m² • PERIMETER: 14.52 m



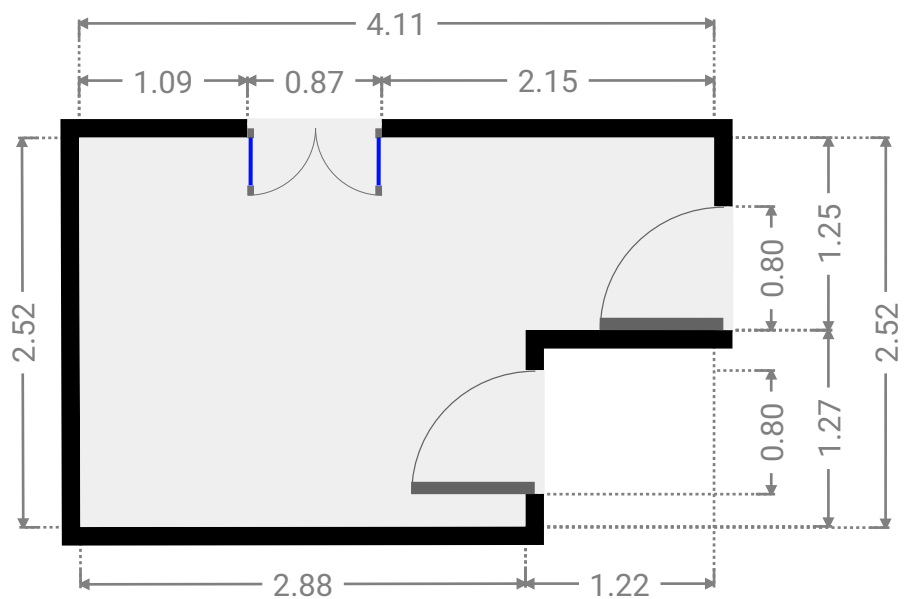
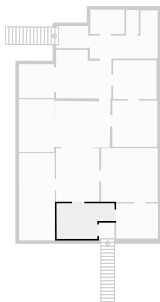
▼ Dining Room
1st Floor

WIDTH: 2.50 m • LENGTH: 2.40 m
AREA: 6.00 m² • PERIMETER: 9.80 m



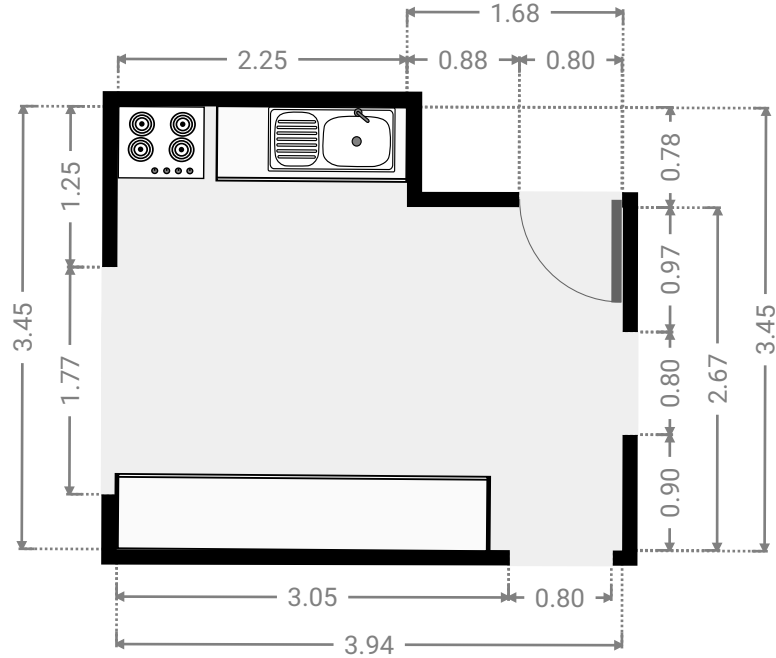
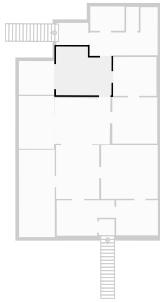
▼ Hall
1st Floor

WIDTH: 4.11 m • LENGTH: 2.52 m
AREA: 8.78 m² • PERIMETER: 13.25 m



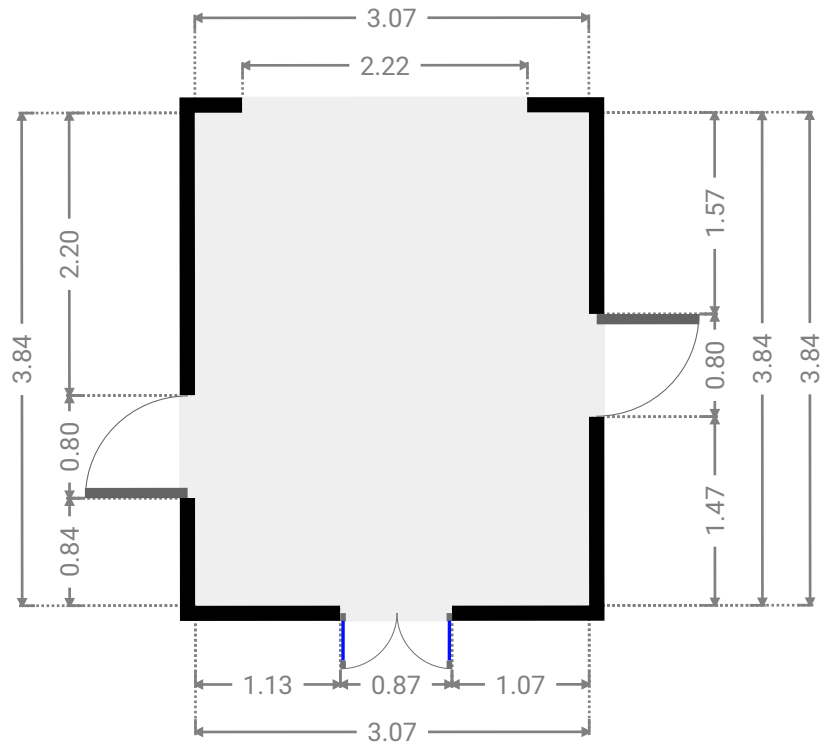
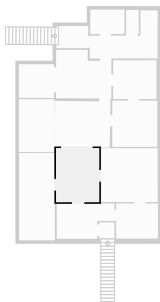
▼ Kitchen
1st Floor

WIDTH: 3.94 m • LENGTH: 3.45 m
AREA: 12.27 m² • PERIMETER: 14.77 m



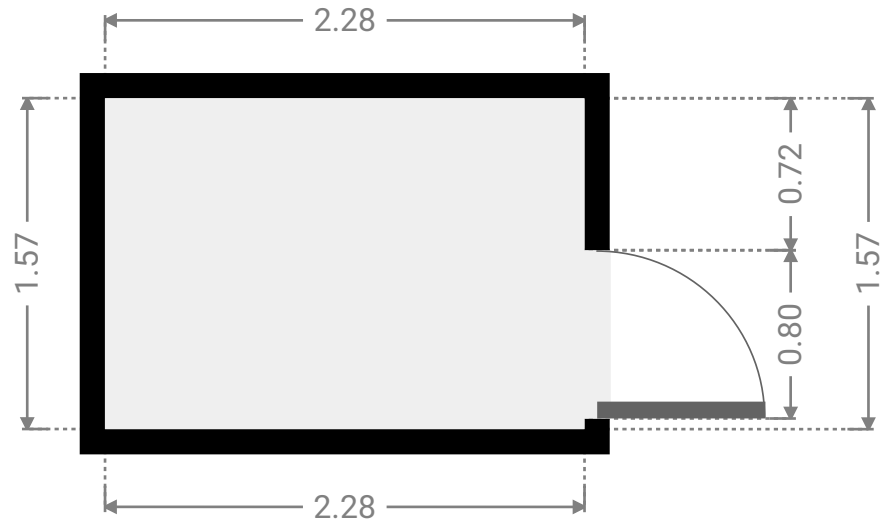
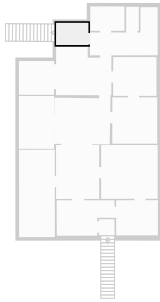
▼ Living Room
1st Floor

WIDTH: 3.07 m • LENGTH: 3.84 m
AREA: 11.78 m² • PERIMETER: 13.82 m



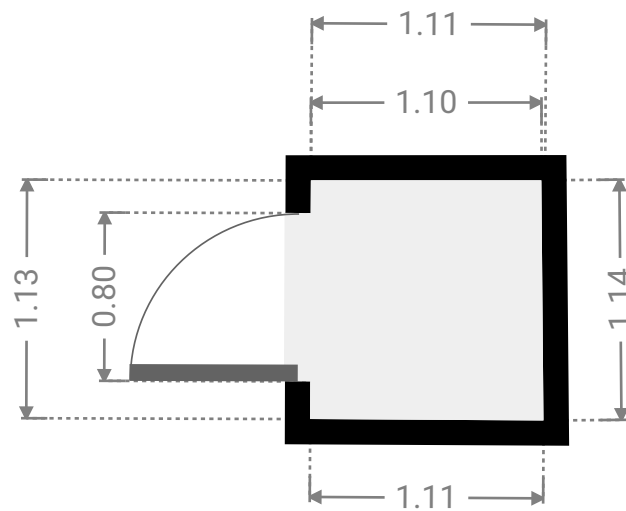
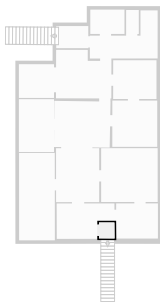
▼ Other
1st Floor

WIDTH: 2.28 m • LENGTH: 1.57 m
AREA: 3.59 m² • PERIMETER: 7.71 m



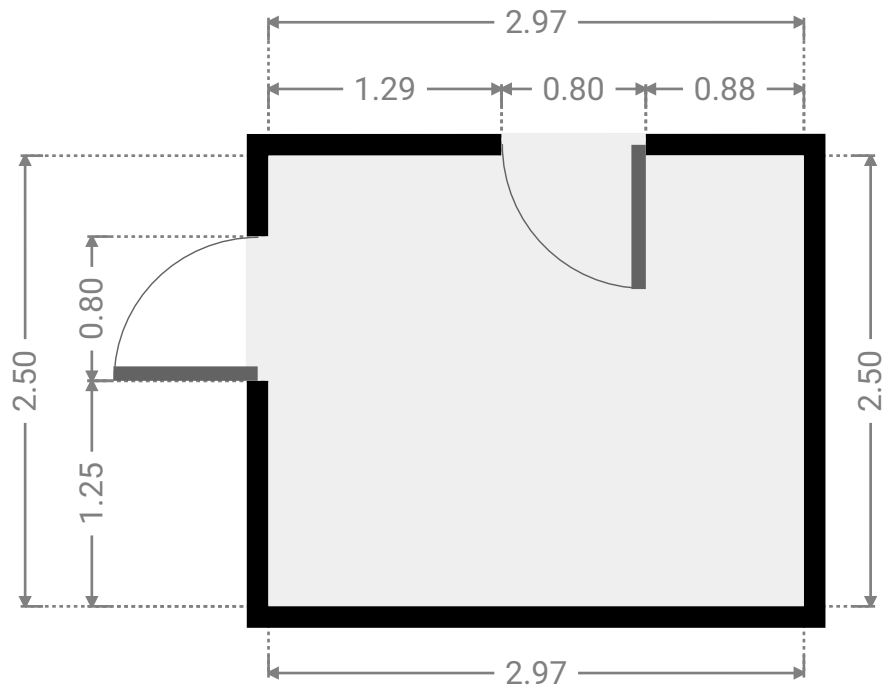
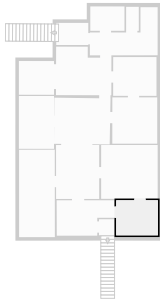
▼ Other
1st Floor

WIDTH: 1.11 m • LENGTH: 1.14 m
AREA: 1.26 m² • PERIMETER: 4.48 m



▼ Study
1st Floor

WIDTH: 2.97 m • LENGTH: 2.50 m
AREA: 7.42 m² • PERIMETER: 10.94 m



▼ Toilet
1st Floor

WIDTH: 0.90 m • LENGTH: 1.71 m
AREA: 1.54 m² • PERIMETER: 5.21 m

