

7 Springfield Drive

SUBMITTED BY

Ray White Rockhampton Casey
stockers@cqoz.com

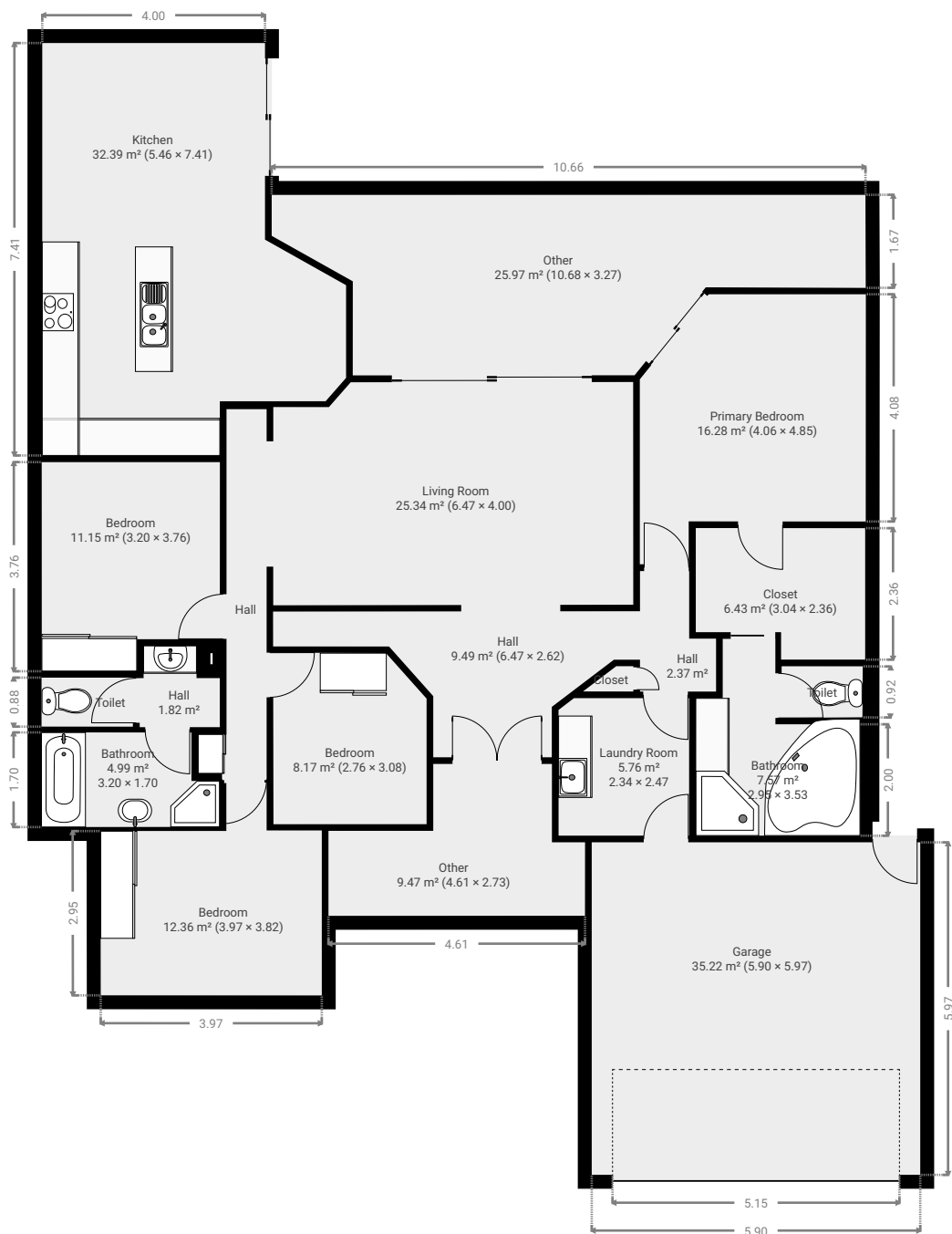
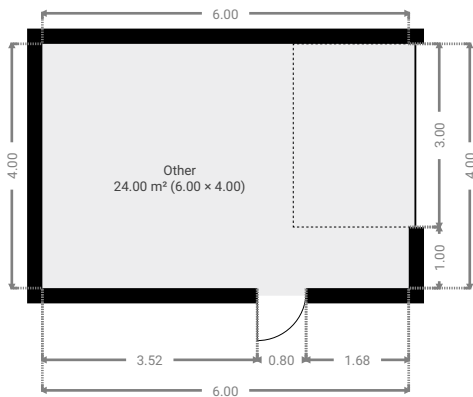
CREATED ON

2022-11-09

Floors

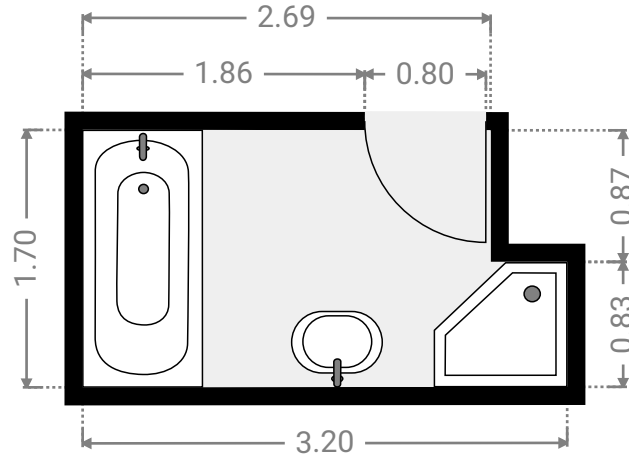
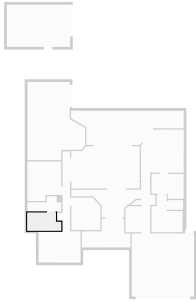
1

▼ Ground Floor



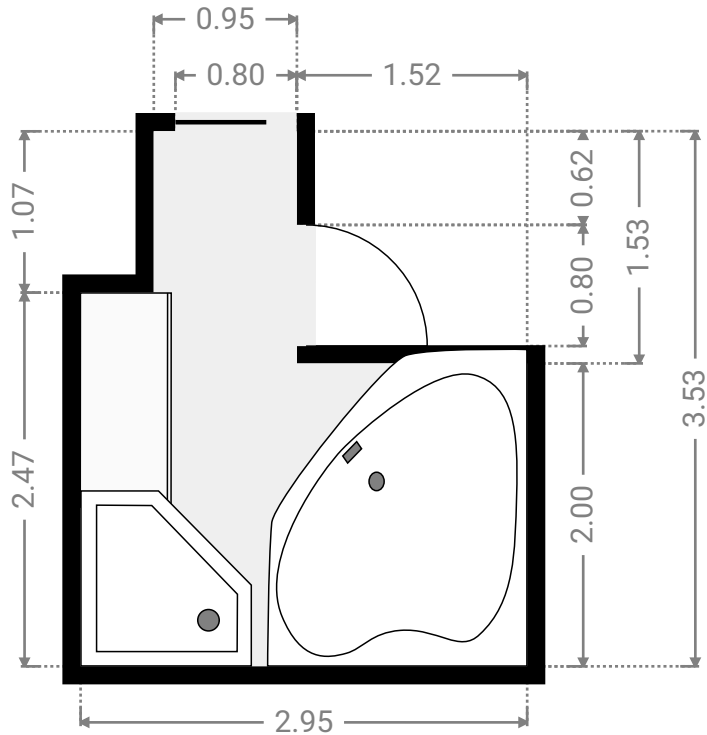
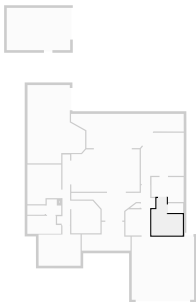
▼ **Bathroom**
Ground Floor

WIDTH: 3.20 m • LENGTH: 1.70 m
AREA: 4.99 m² • PERIMETER: 9.79 m



▼ **Bathroom**
Ground Floor

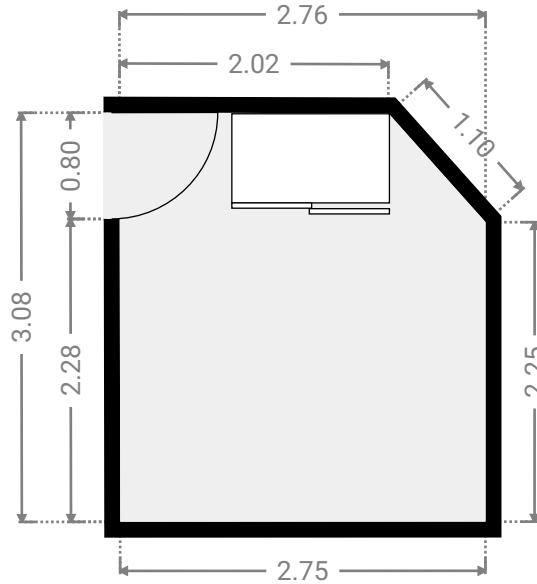
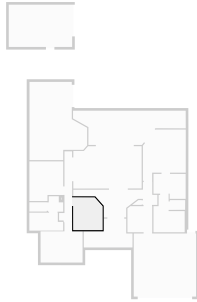
WIDTH: 2.95 m • LENGTH: 3.53 m
AREA: 7.57 m² • PERIMETER: 12.97 m



FLOORS: 1

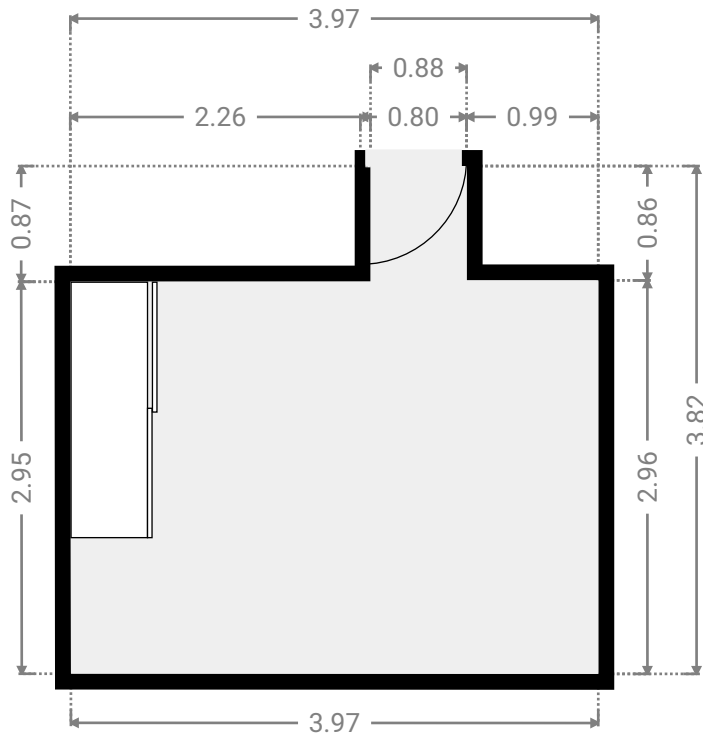
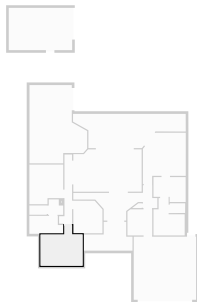
▼ Bedroom Ground Floor

WIDTH: 2.76 m • LENGTH: 3.08 m
AREA: 8.17 m² • PERIMETER: 11.21 m



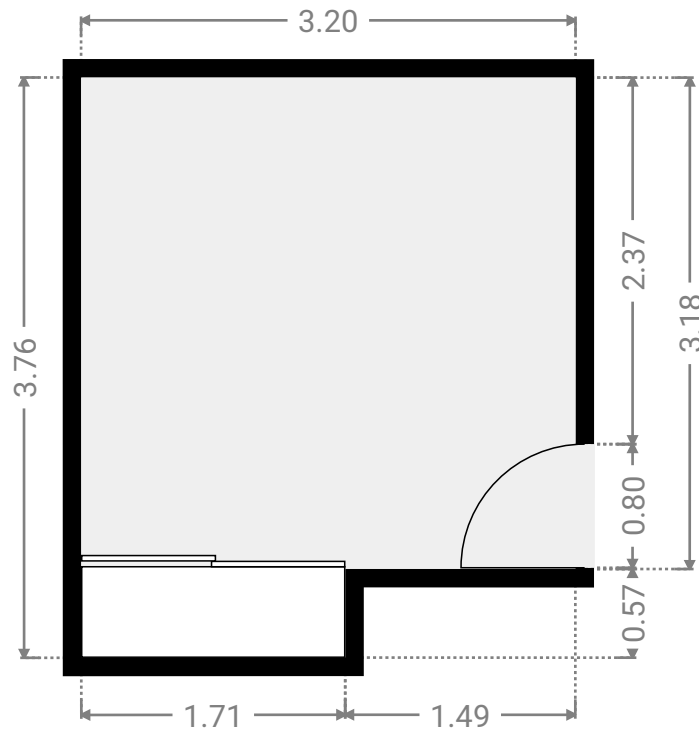
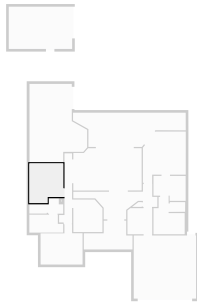
▼ Bedroom Ground Floor

WIDTH: 3.97 m • LENGTH: 3.82 m
AREA: 12.36 m² • PERIMETER: 15.59 m



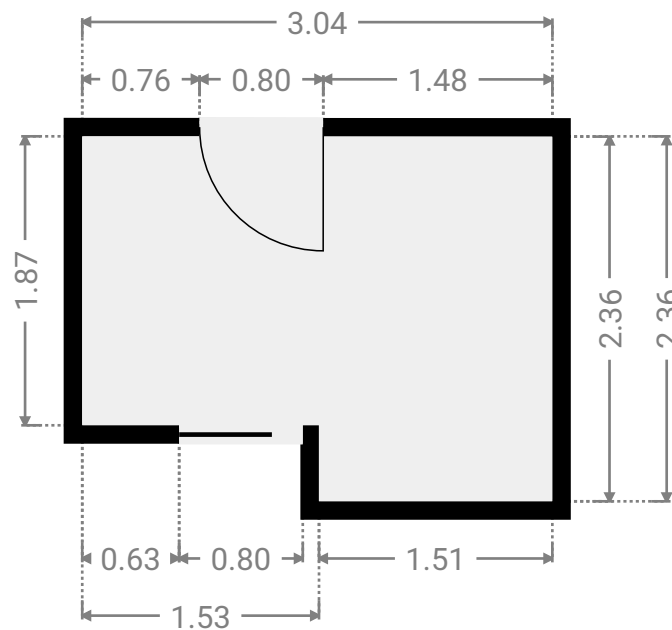
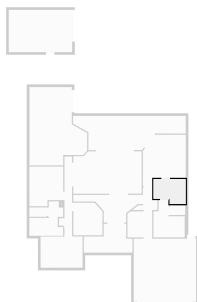
▼ Bedroom Ground Floor

WIDTH: 3.20 m • LENGTH: 3.76 m
AREA: 11.15 m² • PERIMETER: 13.91 m



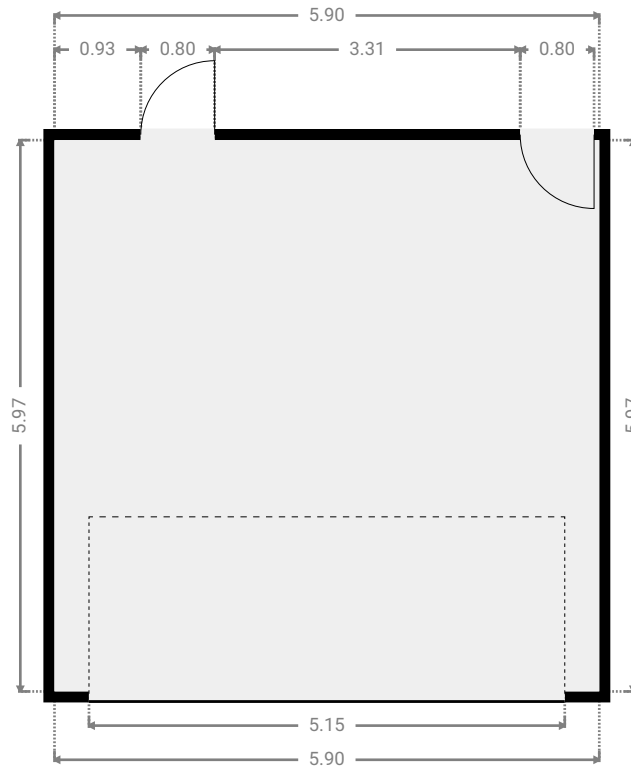
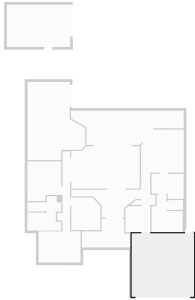
▼ Closet Ground Floor

WIDTH: 3.04 m • LENGTH: 2.36 m
AREA: 6.43 m² • PERIMETER: 10.81 m



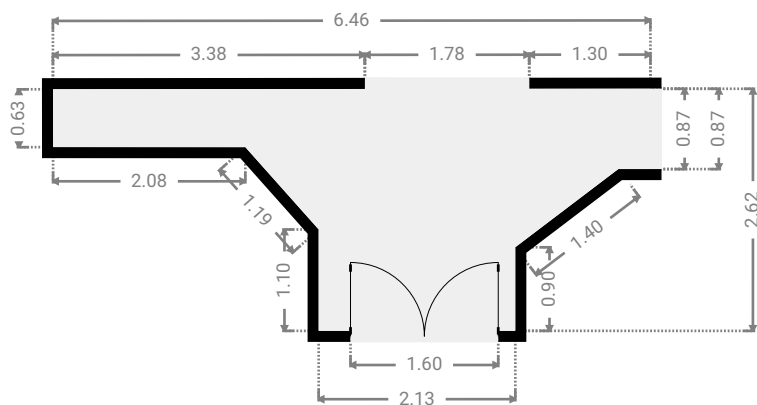
▼ Garage Ground Floor

WIDTH: 5.90 m • LENGTH: 5.97 m
AREA: 35.22 m² • PERIMETER: 23.74 m



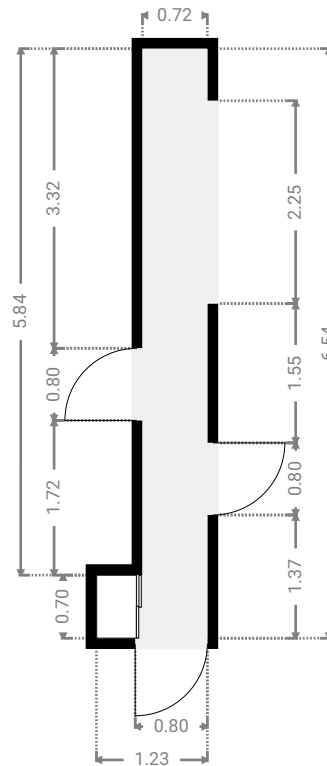
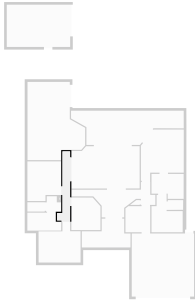
▼ Hall Ground Floor

WIDTH: 6.47 m • LENGTH: 2.62 m
AREA: 9.49 m² • PERIMETER: 17.12 m



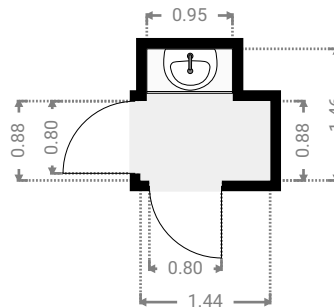
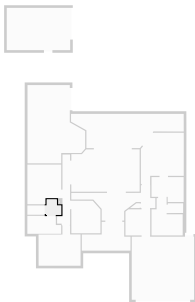
▼ Hall Ground Floor

WIDTH: 1.23 m • LENGTH: 6.54 m
AREA: 5.07 m² • PERIMETER: 15.54 m



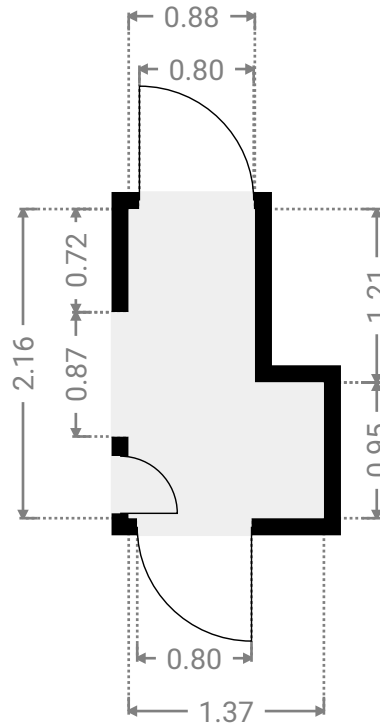
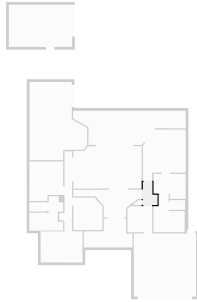
▼ Hall Ground Floor

WIDTH: 1.44 m • LENGTH: 1.46 m
AREA: 1.82 m² • PERIMETER: 5.79 m



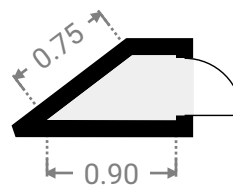
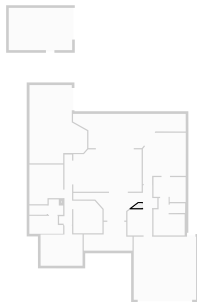
▼ Hall Ground Floor

WIDTH: 1.37 m • LENGTH: 2.16 m
AREA: 2.37 m² • PERIMETER: 7.06 m



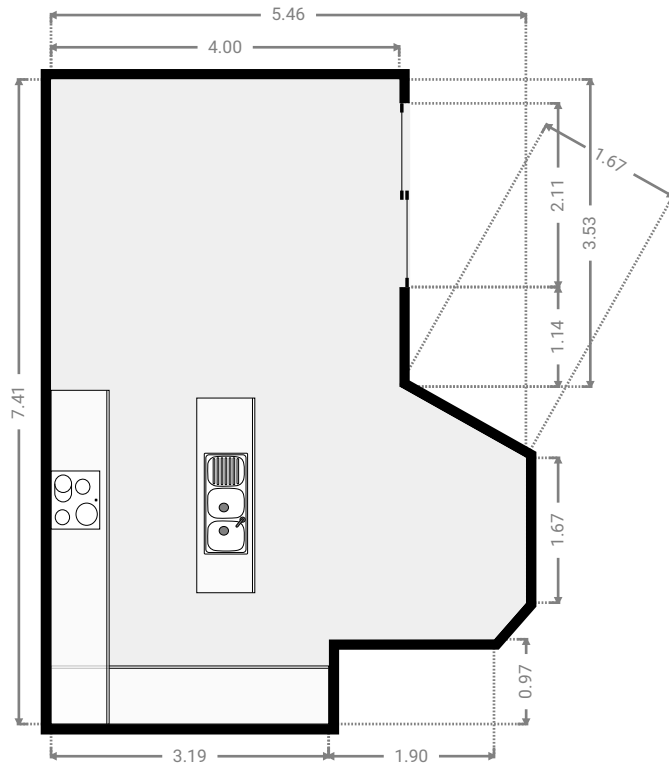
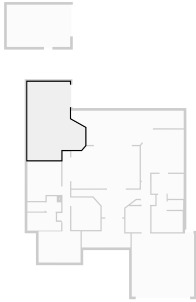
▼ Closet Ground Floor

WIDTH: 0.90 m • LENGTH: 0.45 m
AREA: 0.27 m² • PERIMETER: 2.41 m



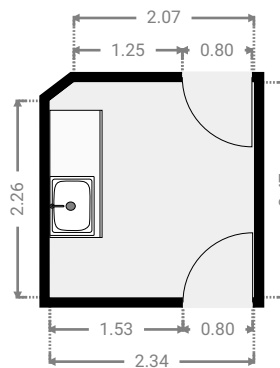
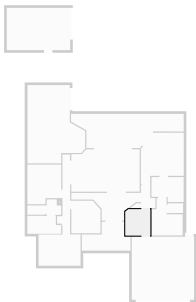
▼ Kitchen
Ground Floor

WIDTH: 5.46 m • LENGTH: 7.41 m
AREA: 32.39 m² • PERIMETER: 24.89 m



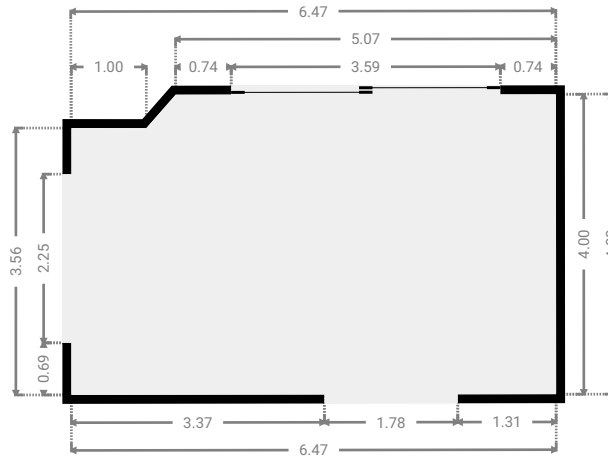
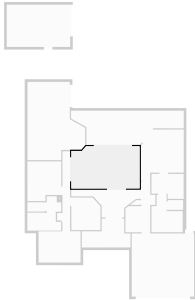
▼ Laundry Room
Ground Floor

WIDTH: 2.34 m • LENGTH: 2.47 m
AREA: 5.76 m² • PERIMETER: 9.49 m



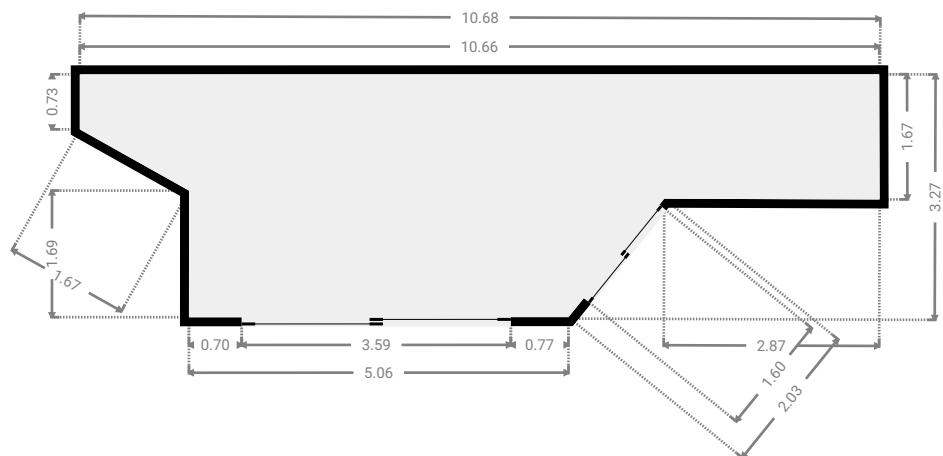
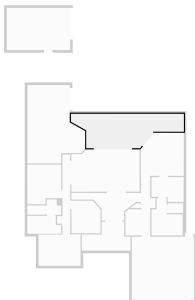
▼ Living Room Ground Floor

WIDTH: 6.47 m • LENGTH: 4.00 m
AREA: 25.34 m² • PERIMETER: 20.69 m



▼ Other Ground Floor

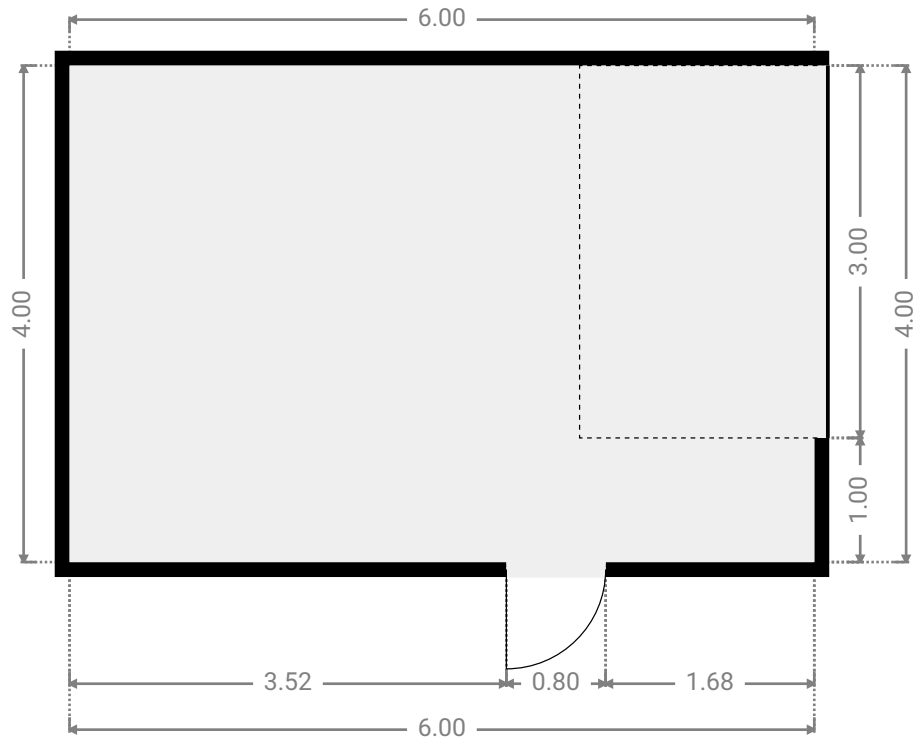
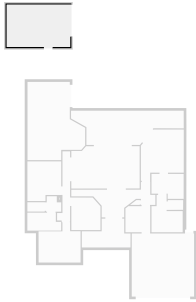
WIDTH: 10.68 m • LENGTH: 3.27 m
AREA: 25.97 m² • PERIMETER: 26.40 m



FLOORS: 1

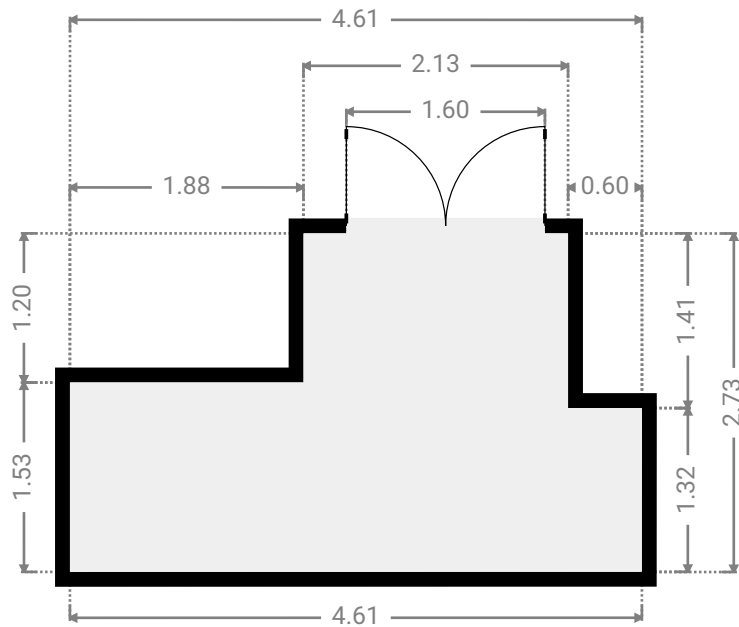
▼ Other Ground Floor

WIDTH: 6.00 m • LENGTH: 4.00 m
AREA: 24.00 m² • PERIMETER: 20.00 m



▼ Other Ground Floor

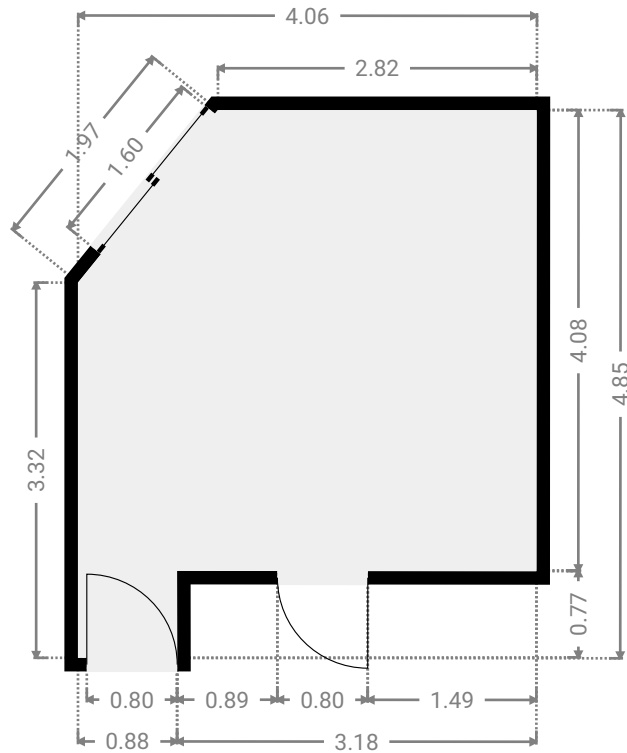
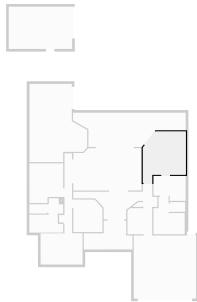
WIDTH: 4.61 m • LENGTH: 2.73 m
AREA: 9.47 m² • PERIMETER: 14.67 m



FLOORS: 1

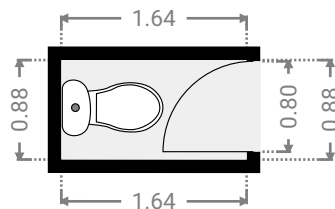
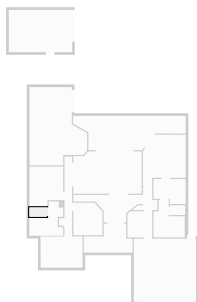
▼ **Primary Bedroom**
Ground Floor

WIDTH: 4.06 m • LENGTH: 4.85 m
AREA: 16.28 m² • PERIMETER: 17.01 m



▼ **Toilet**
Ground Floor

WIDTH: 1.64 m • LENGTH: 0.88 m
AREA: 1.44 m² • PERIMETER: 5.04 m



▼ Toilet Ground Floor

WIDTH: 1.46 m • LENGTH: 0.93 m
AREA: 1.34 m² • PERIMETER: 4.75 m

