

7 Lorrieket Court

SUBMITTED BY

Ray White Rockhampton Casey
stockers@cqoz.com

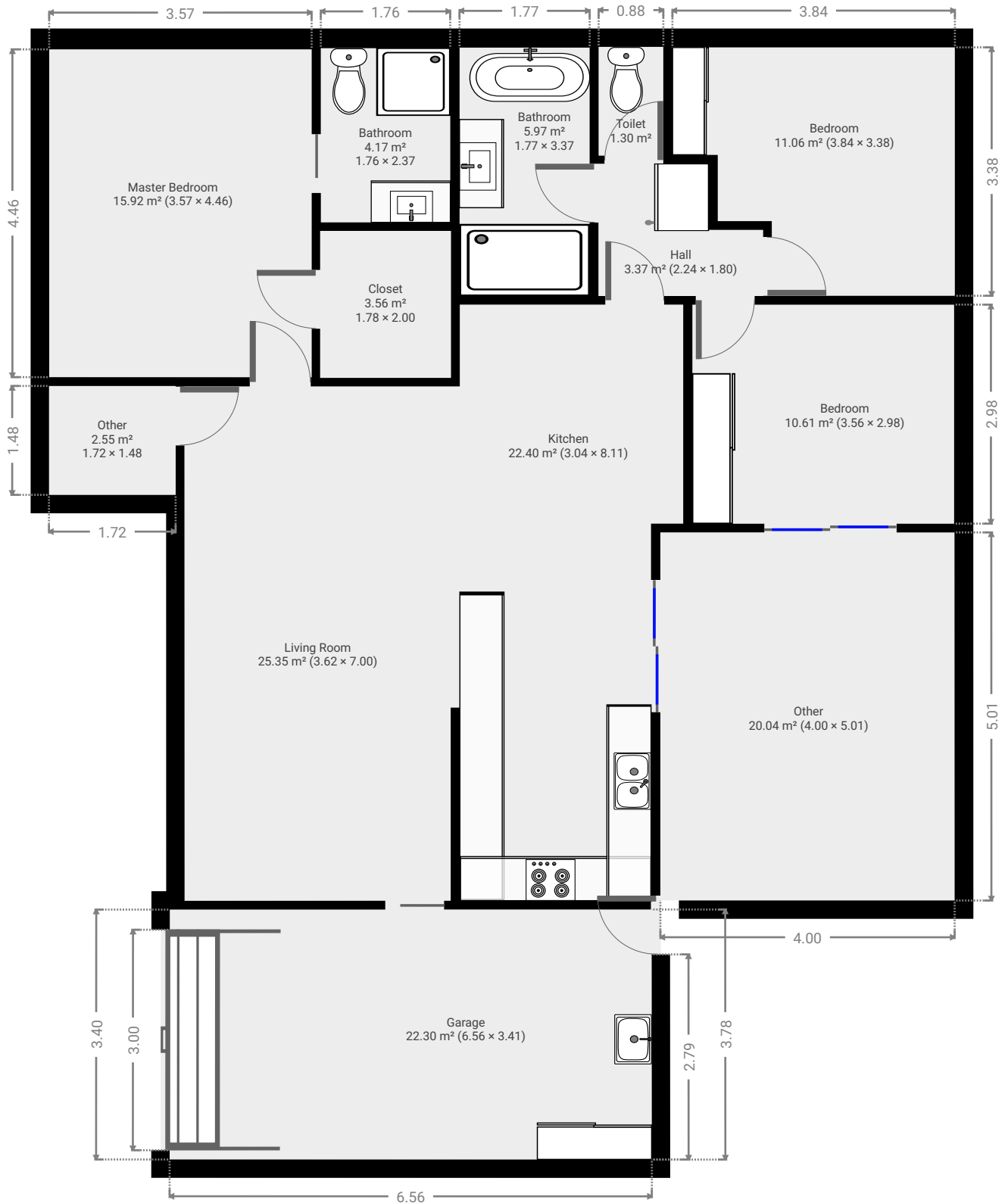
CREATED ON

2021-11-04

Floors

1

▼ Ground Floor



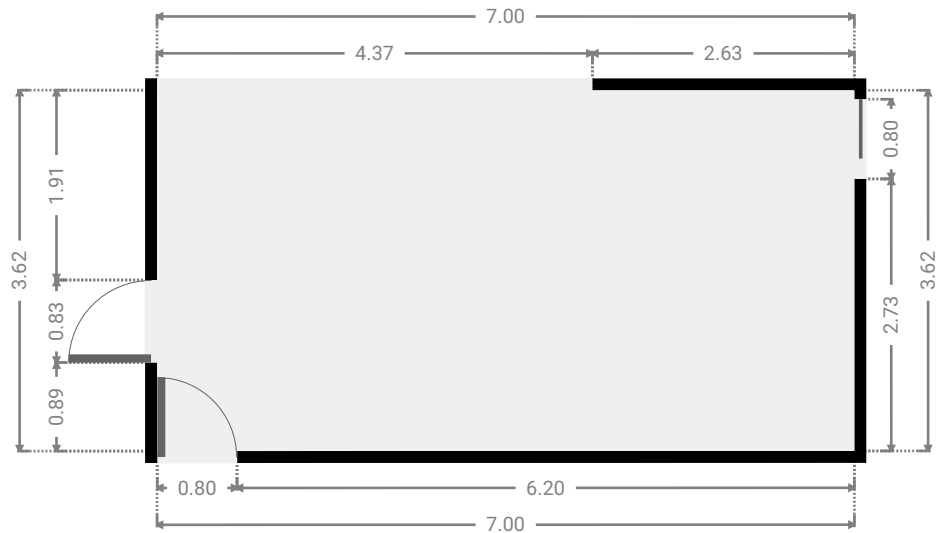
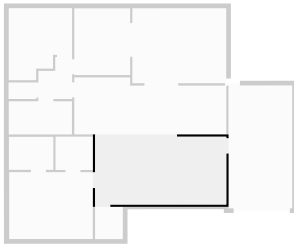
7 Lorrieket Court

FLOORS: 1



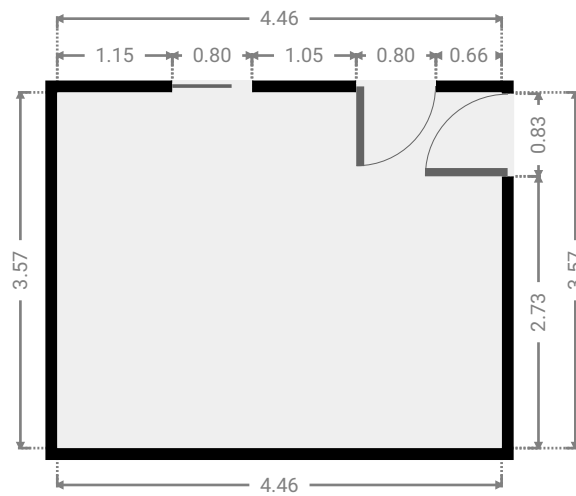
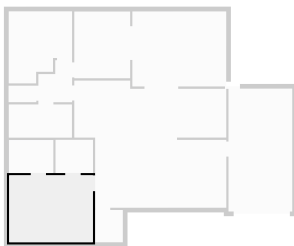
▼ Living Room Ground Floor

WIDTH: 7.00 m • LENGTH: 3.62 m
AREA: 25.35 m² • PERIMETER: 21.24 m



▼ Master Bedroom Ground Floor

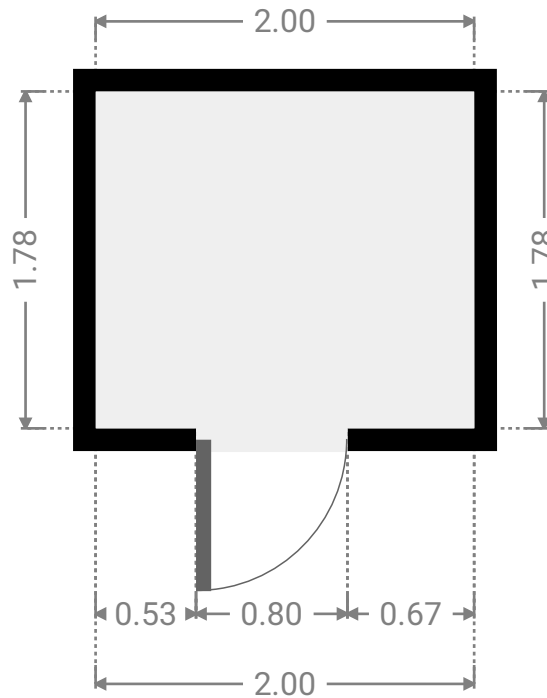
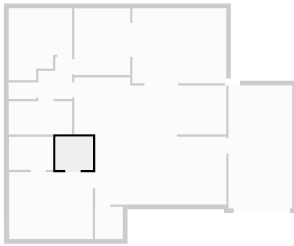
WIDTH: 4.46 m • LENGTH: 3.57 m
AREA: 15.92 m² • PERIMETER: 16.06 m



FLOORS: 1

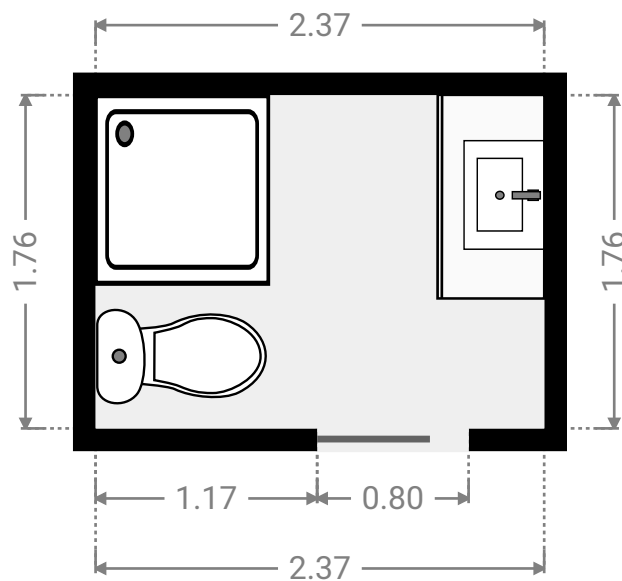
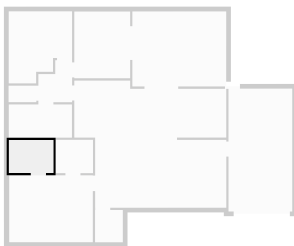
▼ Closet Ground Floor

WIDTH: 2.00 m • LENGTH: 1.78 m
AREA: 3.56 m² • PERIMETER: 7.56 m



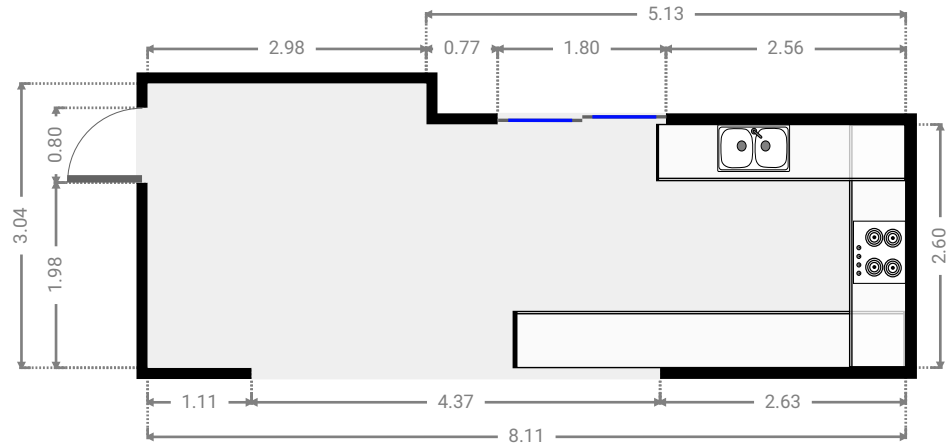
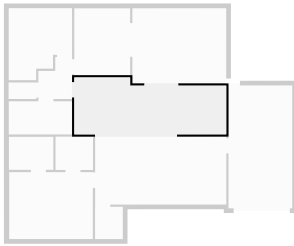
▼ Bathroom Ground Floor

WIDTH: 2.37 m • LENGTH: 1.76 m
AREA: 4.17 m² • PERIMETER: 8.26 m



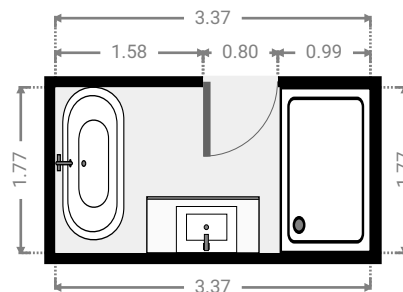
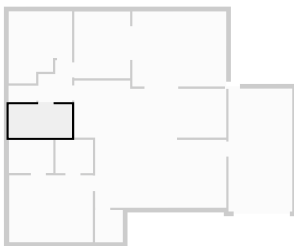
▼ Kitchen Ground Floor

WIDTH: 8.11 m • LENGTH: 3.04 m
AREA: 22.40 m² • PERIMETER: 22.30 m



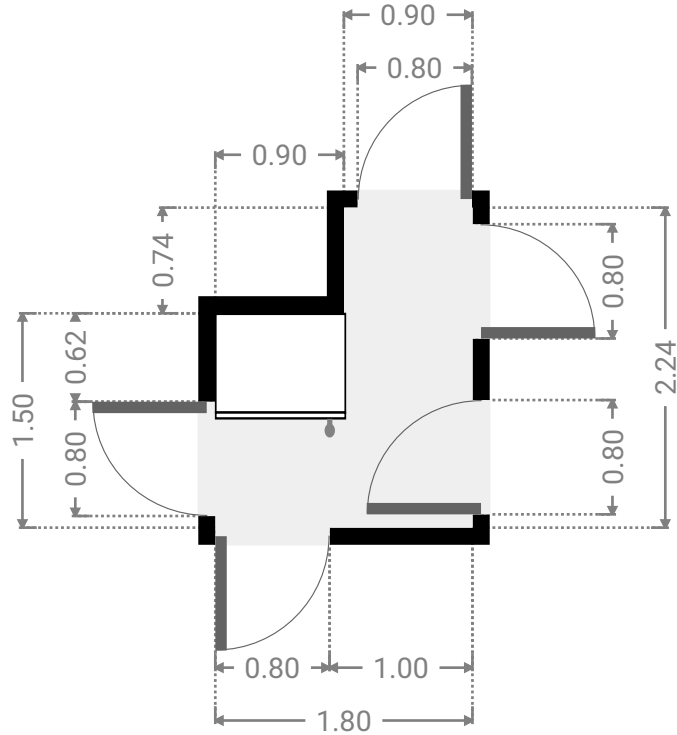
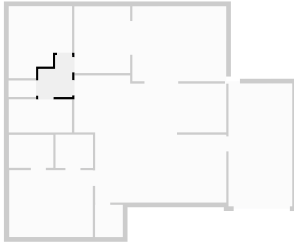
▼ Bathroom Ground Floor

WIDTH: 3.37 m • LENGTH: 1.77 m
AREA: 5.97 m² • PERIMETER: 10.28 m



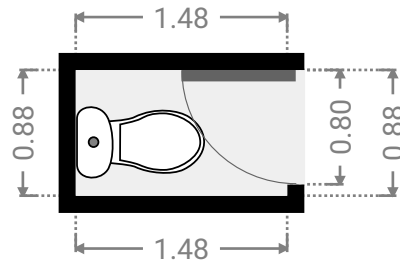
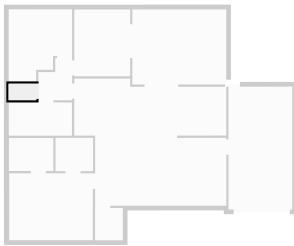
▼ Hall Ground Floor

WIDTH: 1.80 m • LENGTH: 2.24 m
AREA: 3.37 m² • PERIMETER: 8.08 m



▼ Toilet Ground Floor

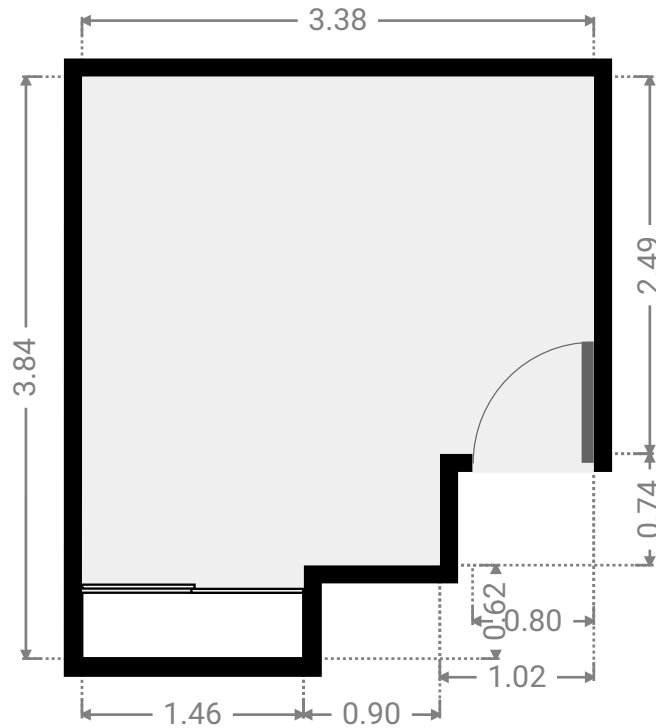
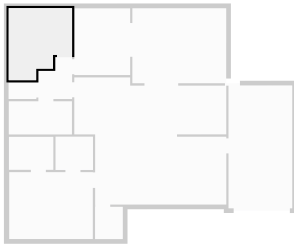
WIDTH: 1.48 m • LENGTH: 0.88 m
AREA: 1.30 m² • PERIMETER: 4.72 m



FLOORS: 1

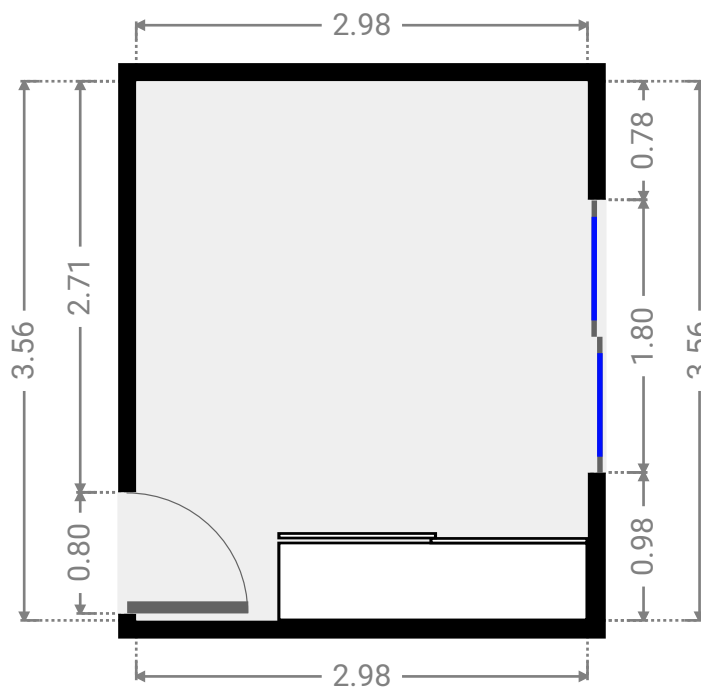
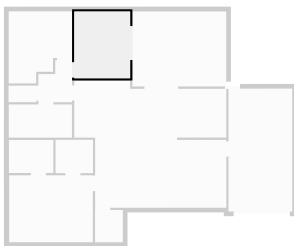
▼ **Bedroom**
Ground Floor

WIDTH: 3.38 m • LENGTH: 3.84 m
AREA: 11.06 m² • PERIMETER: 14.45 m



▼ **Bedroom**
Ground Floor

WIDTH: 2.98 m • LENGTH: 3.56 m
AREA: 10.61 m² • PERIMETER: 13.08 m



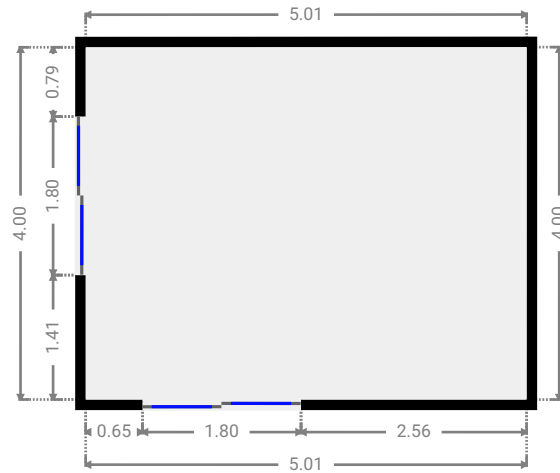
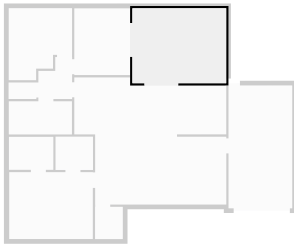
7 Lorrieket Court

FLOORS: 1



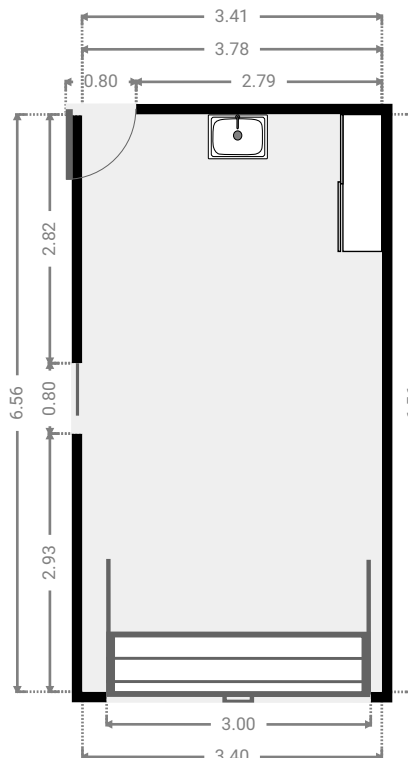
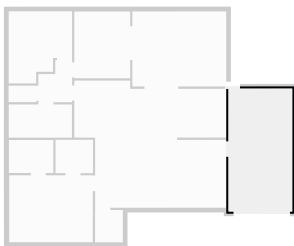
▼ Other Ground Floor

WIDTH: 5.01 m • LENGTH: 4.00 m
AREA: 20.04 m² • PERIMETER: 18.02 m



▼ Garage Ground Floor

WIDTH: 3.41 m • LENGTH: 6.56 m
AREA: 22.30 m² • PERIMETER: 19.92 m



▼ Other
Ground Floor

WIDTH: 1.48 m • LENGTH: 1.72 m
AREA: 2.55 m² • PERIMETER: 6.41 m

