

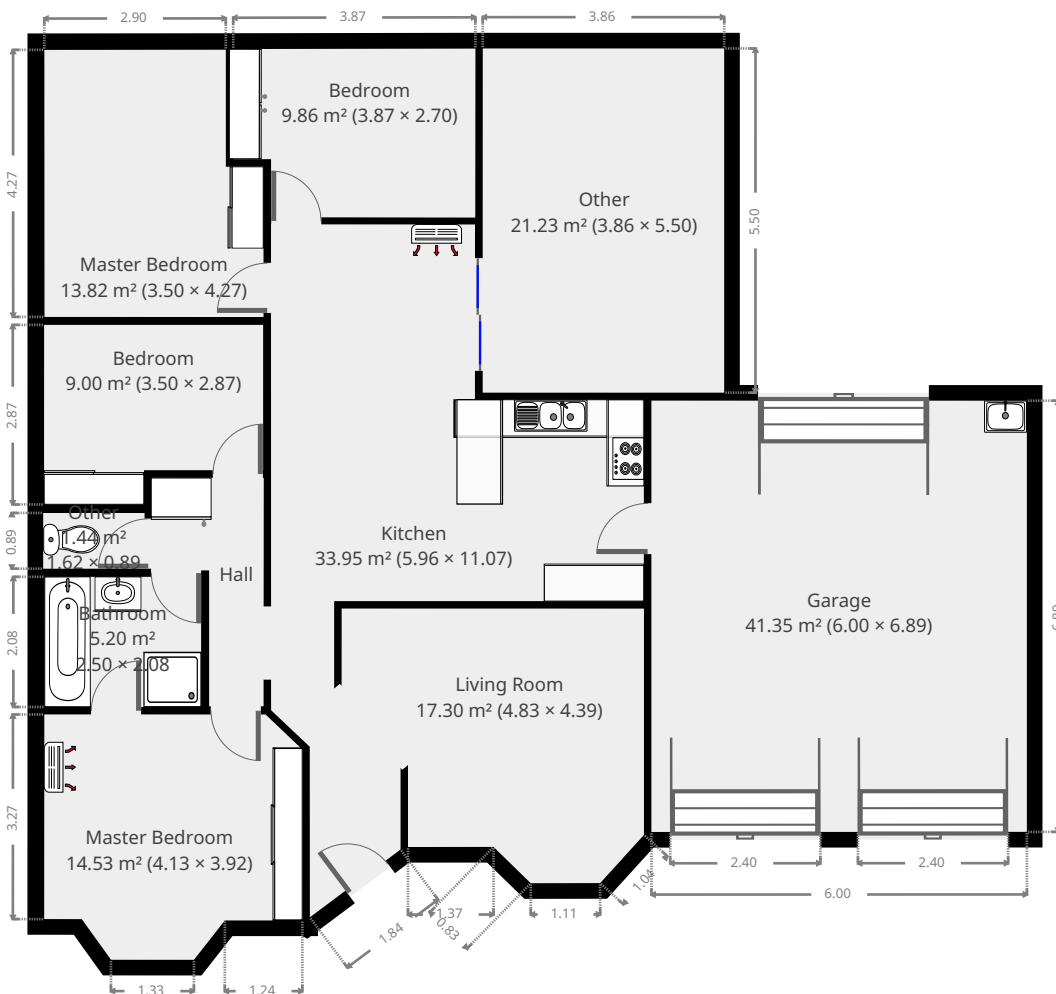
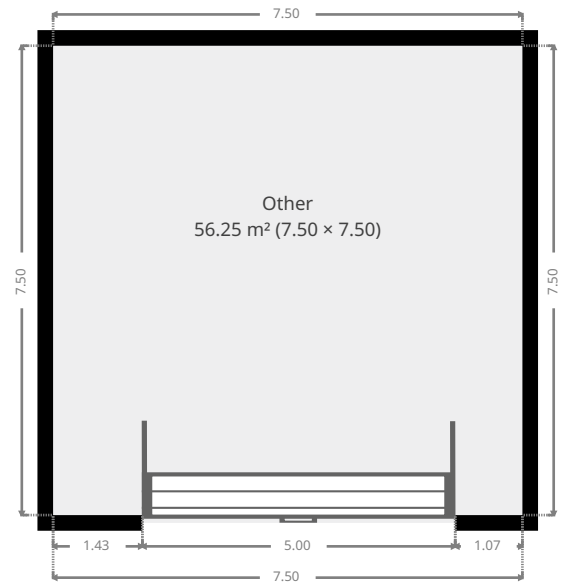
7 Lamb Avenue

Created on
2020-06-18

Floors

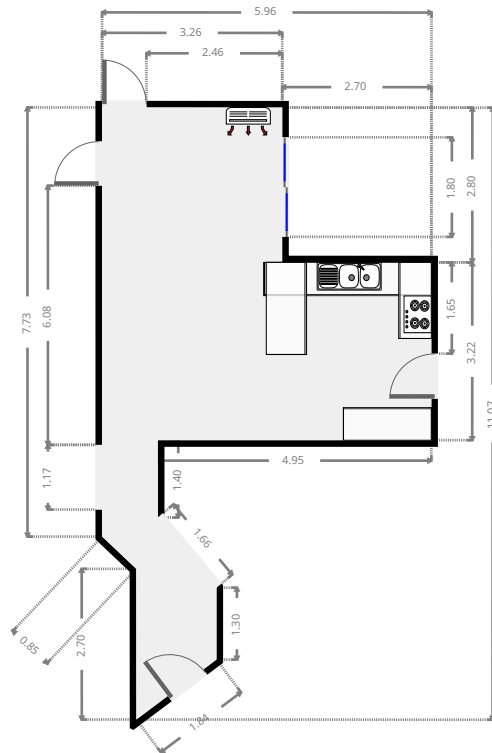
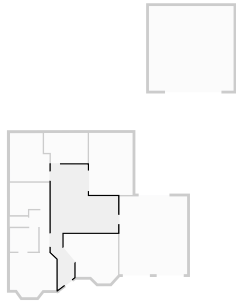
1

▼ Ground Floor



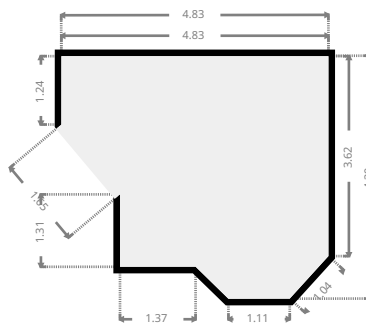
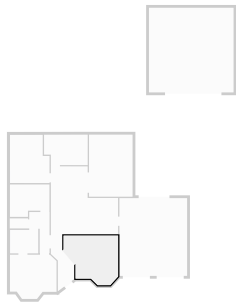
▼ Kitchen Ground Floor

WIDTH: 5.96 m • **LENGTH:** 11.07 m
AREA: 33.95 m² • **PERIMETER:** 34.43 m



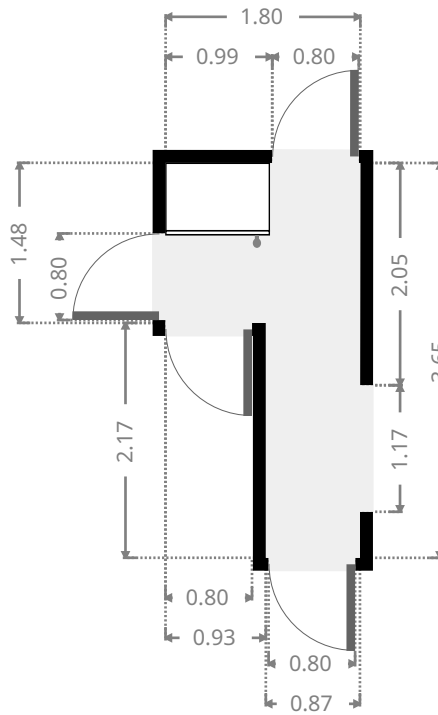
▼ Living Room Ground Floor

WIDTH: 4.83 m • **LENGTH:** 4.39 m
AREA: 17.30 m² • **PERIMETER:** 16.99 m



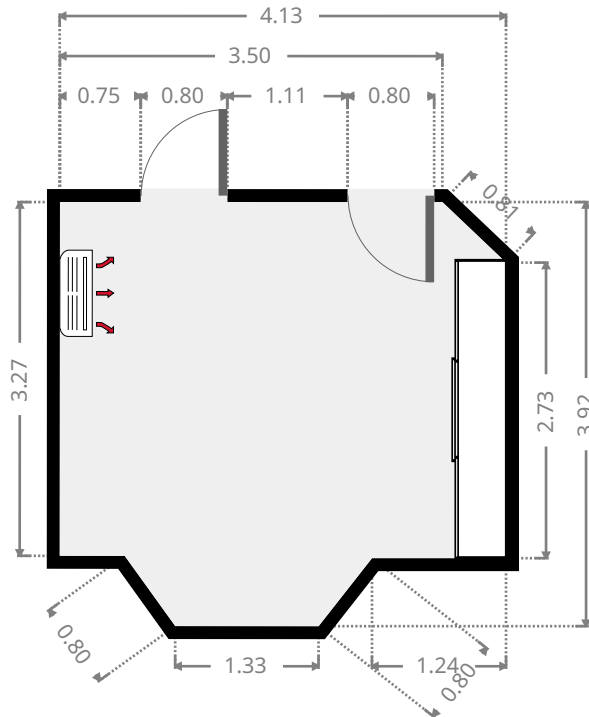
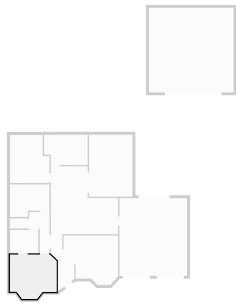
▼ **Hall**
Ground Floor

WIDTH: 1.80 m • **LENGTH:** 3.65 m
AREA: 4.55 m² • **PERIMETER:** 10.90 m



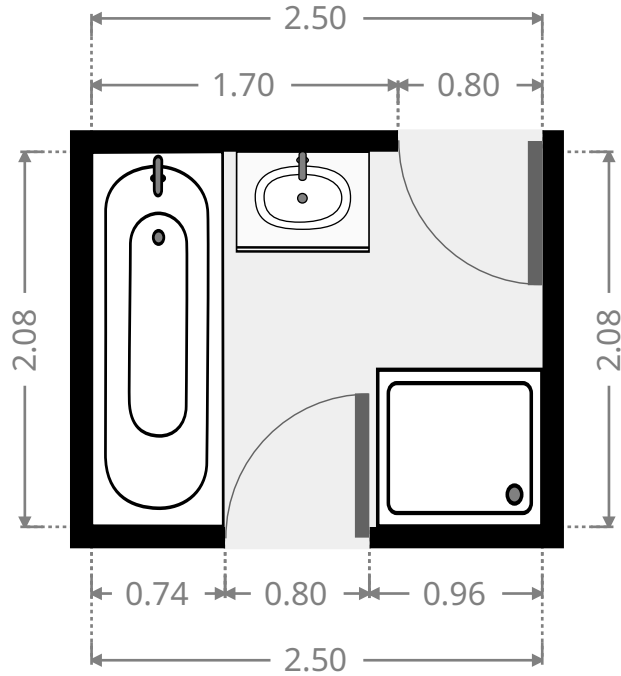
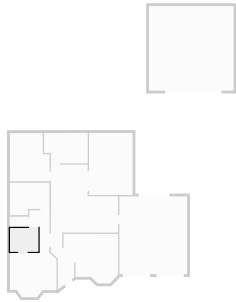
▼ **Master Bedroom**
Ground Floor

WIDTH: 4.13 m • **LENGTH:** 3.92 m
AREA: 14.53 m² • **PERIMETER:** 15.12 m



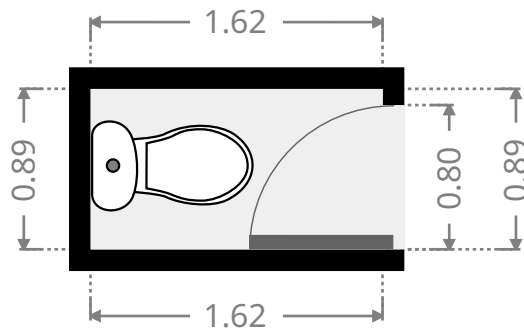
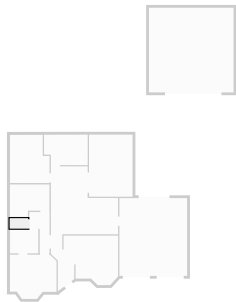
▼ **Bathroom**
Ground Floor

WIDTH: 2.50 m • **LENGTH:** 2.08 m
AREA: 5.20 m² • **PERIMETER:** 9.16 m



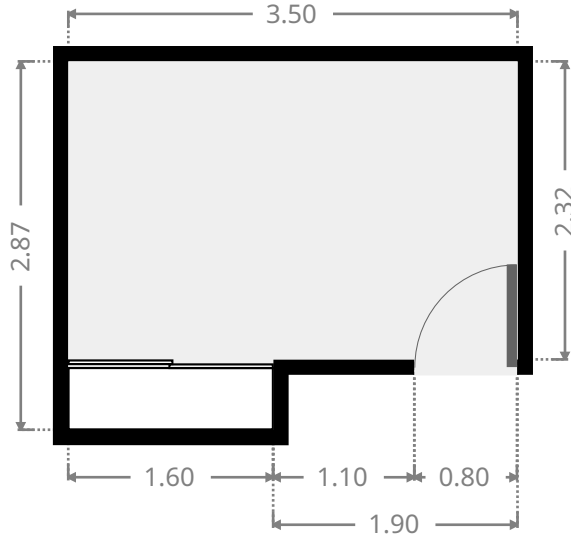
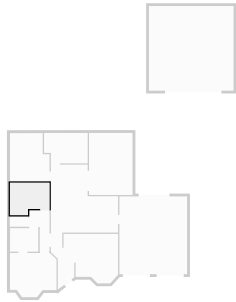
▼ **Other**
Ground Floor

WIDTH: 1.62 m • **LENGTH:** 0.89 m
AREA: 1.44 m² • **PERIMETER:** 5.02 m



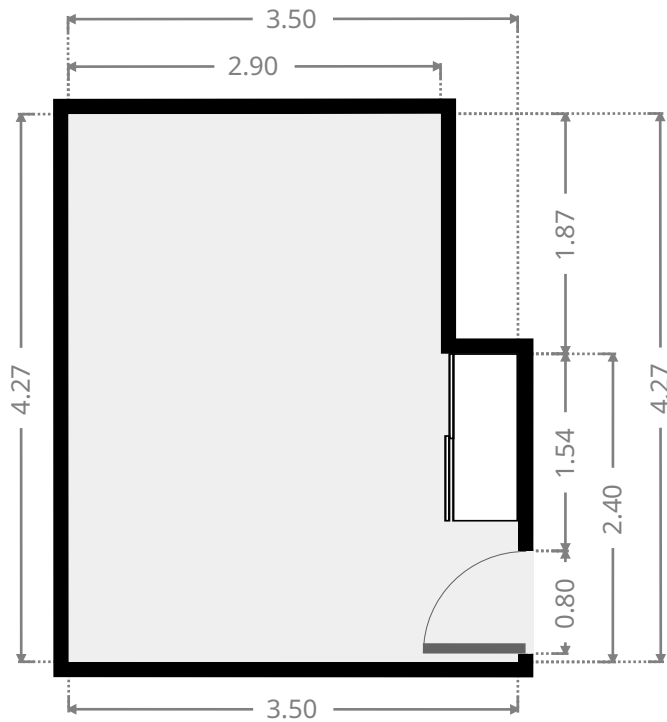
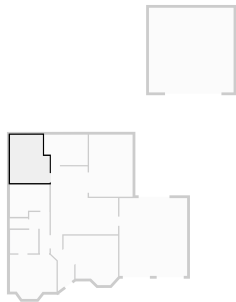
▼ **Bedroom**
Ground Floor

WIDTH: 3.50 m • LENGTH: 2.87 m
AREA: 9.00 m² • PERIMETER: 12.74 m



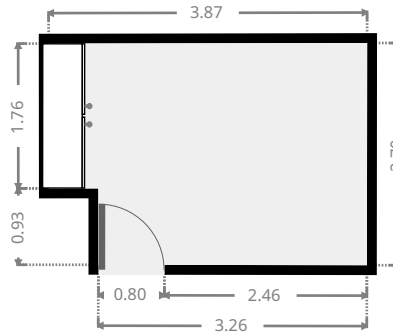
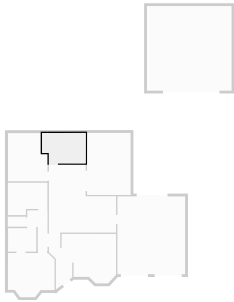
▼ **Master Bedroom**
Ground Floor

WIDTH: 3.50 m • LENGTH: 4.27 m
AREA: 13.82 m² • PERIMETER: 15.54 m



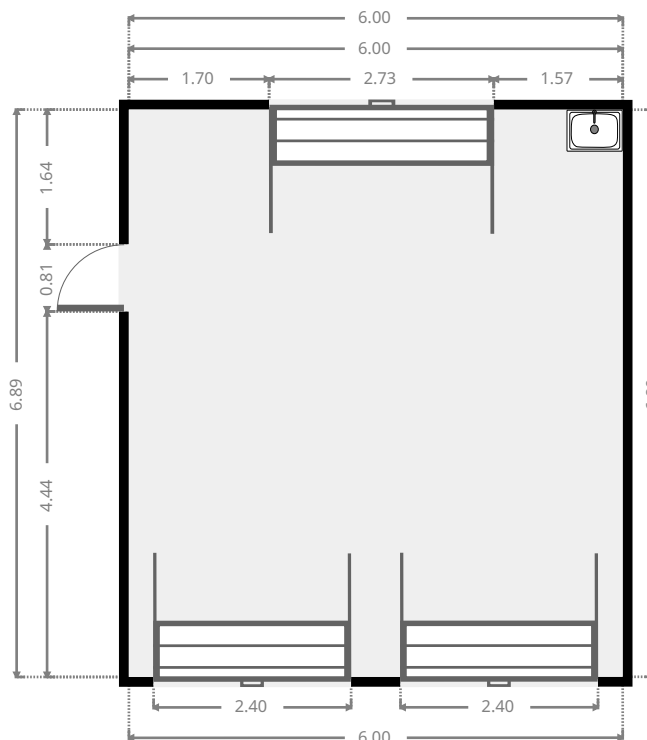
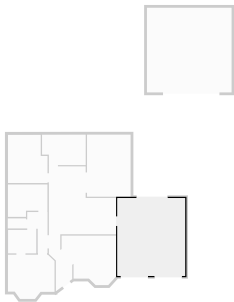
▼ **Bedroom**
Ground Floor

WIDTH: 3.87 m • **LENGTH:** 2.70 m
AREA: 9.86 m² • **PERIMETER:** 13.12 m



▼ **Garage**
Ground Floor

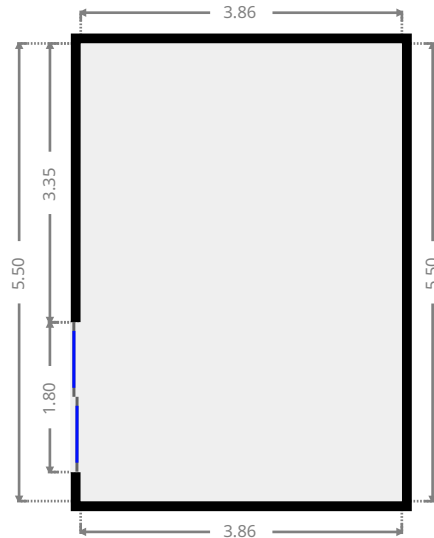
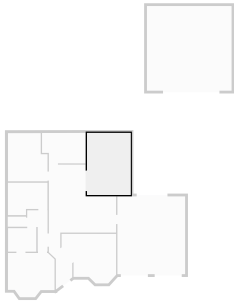
WIDTH: 6.00 m • **LENGTH:** 6.89 m
AREA: 41.35 m² • **PERIMETER:** 25.78 m



FLOORS: 1

▼ Other Ground Floor

WIDTH: 3.86 m • LENGTH: 5.50 m
AREA: 21.23 m² • PERIMETER: 18.72 m



▼ Other Ground Floor

WIDTH: 7.50 m • LENGTH: 7.50 m
AREA: 56.25 m² • PERIMETER: 30.00 m

