

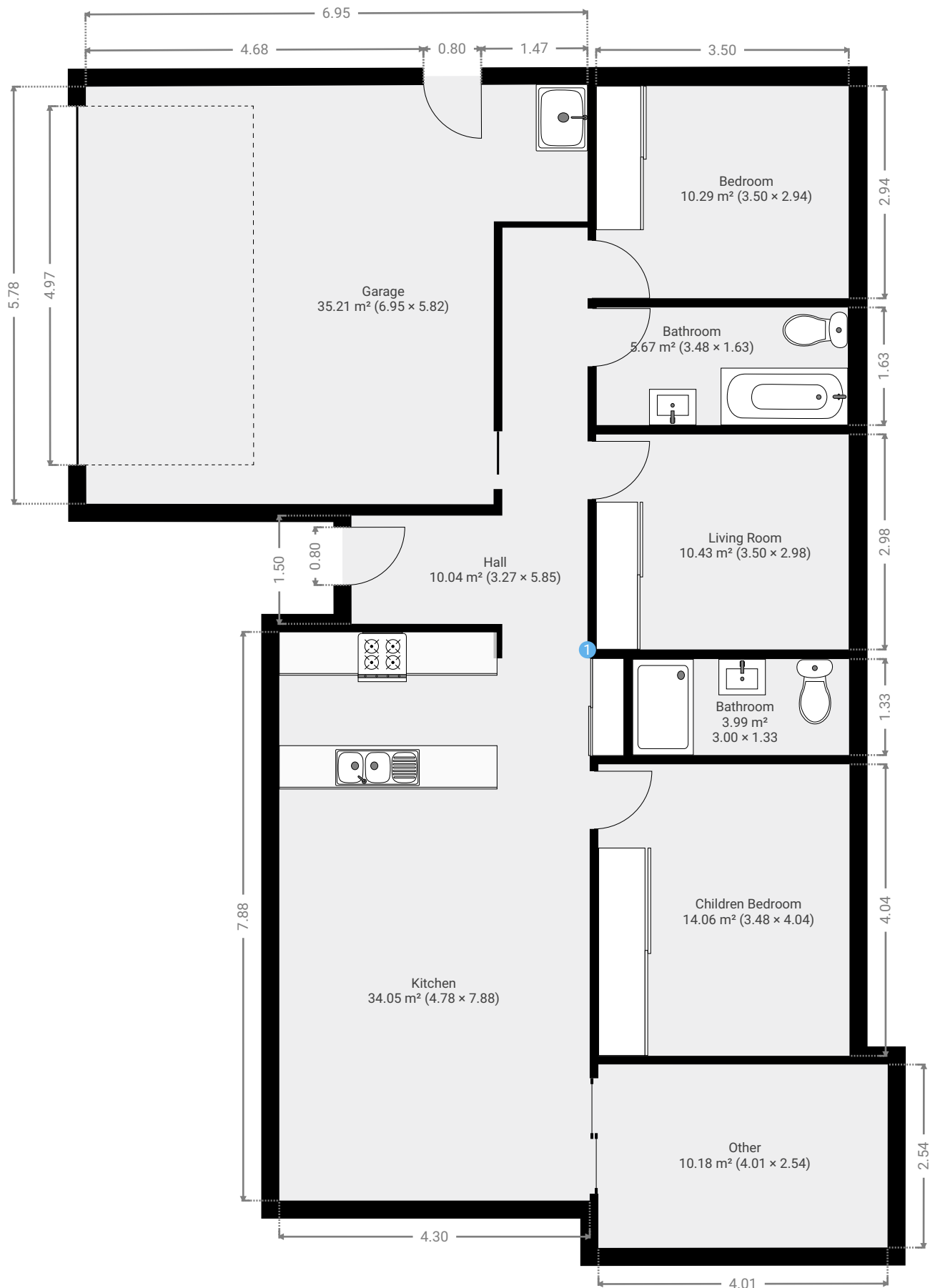
7 Ford Place

SUBMITTED BY
Ray White Rockhampton Casey
stockers@cqoz.com

CREATED ON
2022-12-19

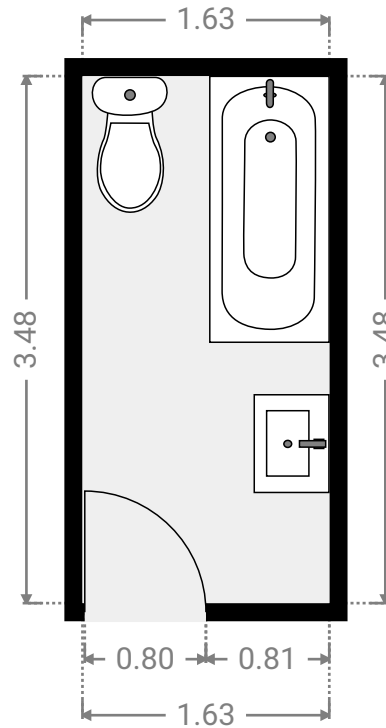
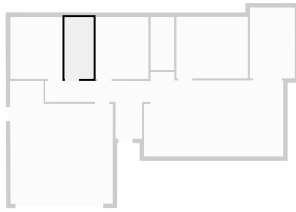
Floors
1

▼ Ground Floor



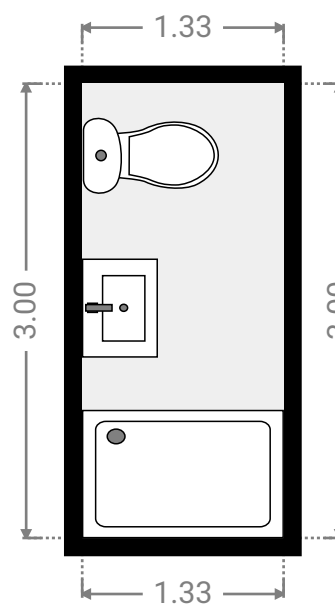
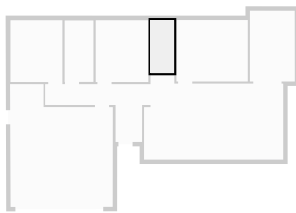
▼ Bathroom Ground Floor

WIDTH: 1.63 m • LENGTH: 3.48 m
AREA: 5.67 m² • PERIMETER: 10.22 m



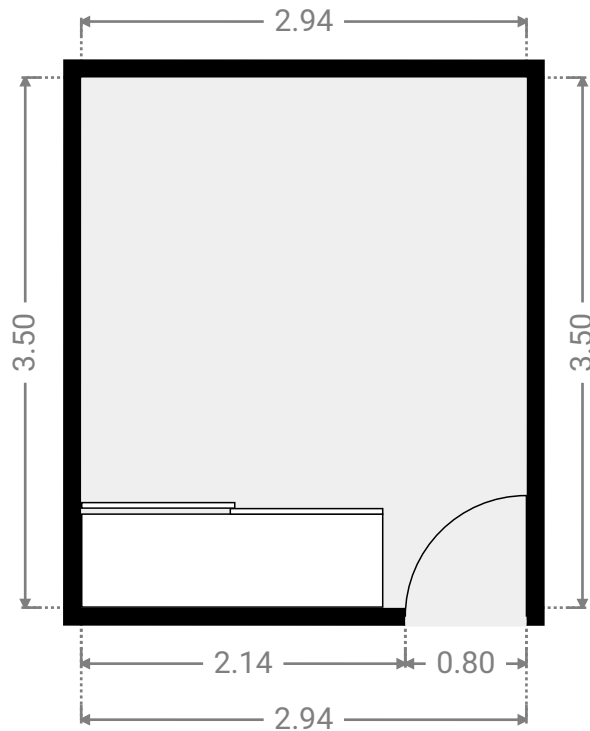
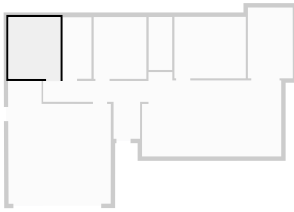
▼ Bathroom Ground Floor

WIDTH: 1.33 m • LENGTH: 3.00 m
AREA: 3.99 m² • PERIMETER: 8.66 m



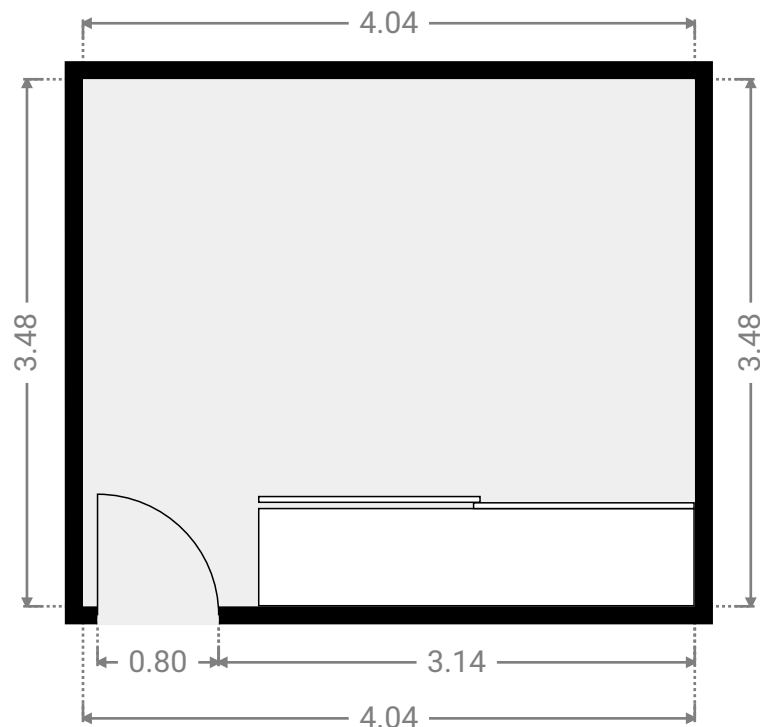
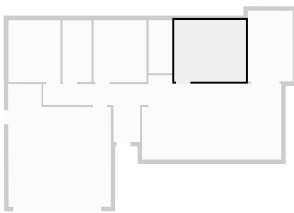
▼ Bedroom Ground Floor

WIDTH: 2.94 m • LENGTH: 3.50 m
AREA: 10.29 m² • PERIMETER: 12.88 m



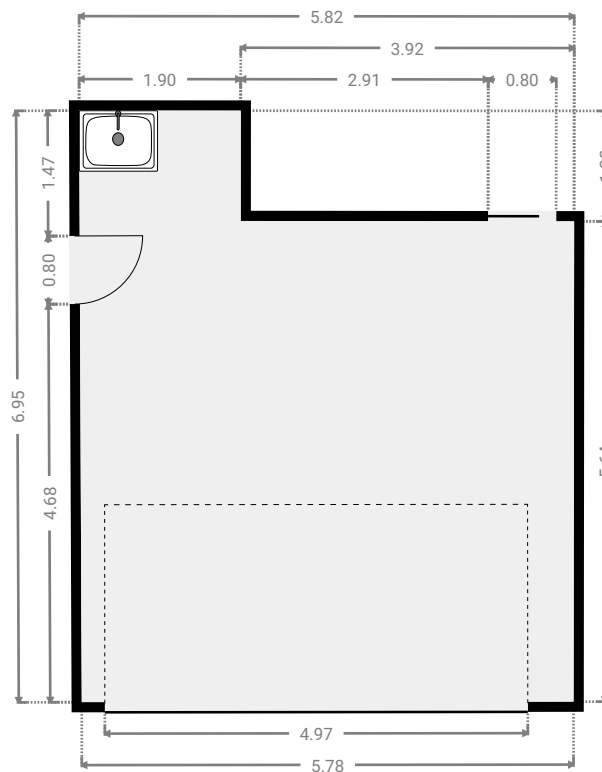
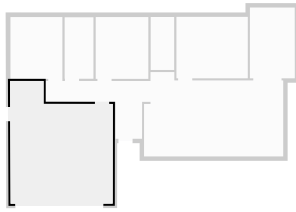
▼ Children Bedroom Ground Floor

WIDTH: 4.04 m • LENGTH: 3.48 m
AREA: 14.06 m² • PERIMETER: 15.04 m



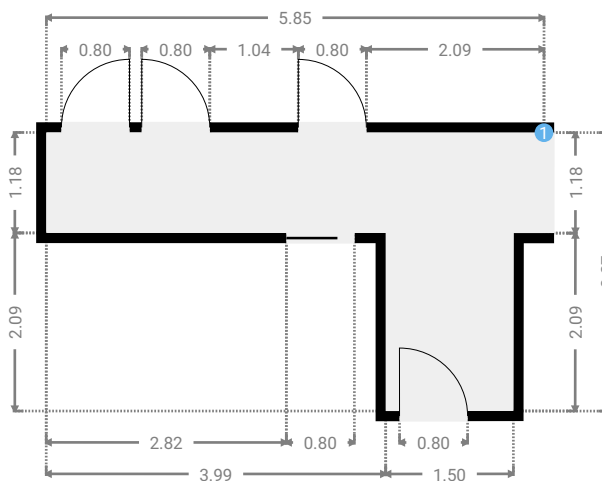
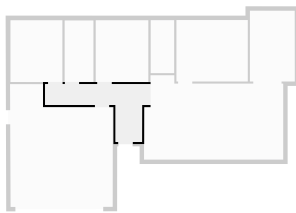
▼ Garage Ground Floor

WIDTH: 5.82 m • LENGTH: 6.95 m
AREA: 35.21 m² • PERIMETER: 25.49 m



▼ Hall Ground Floor

WIDTH: 5.85 m • LENGTH: 3.27 m
AREA: 10.04 m² • PERIMETER: 18.24 m



▼ Hall/Ground Floor

1 OPENING

Height
0.00 m



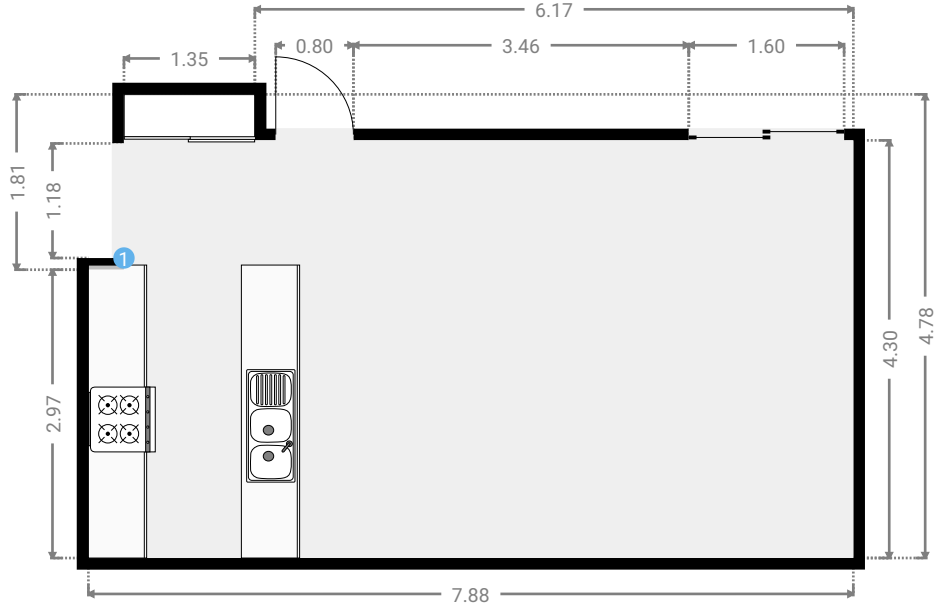
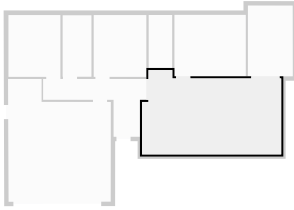
7 Ford Place

FLOORS: 1



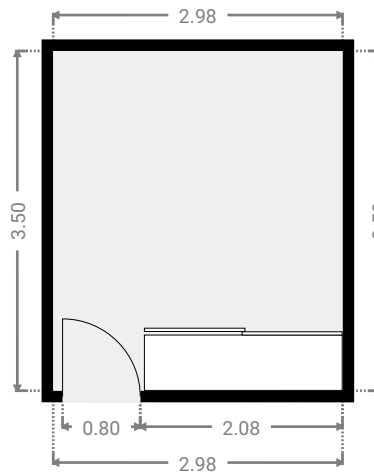
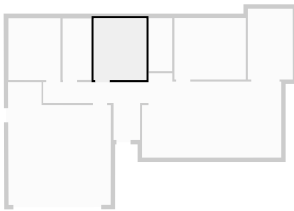
▼ Kitchen Ground Floor

WIDTH: 7.88 m • LENGTH: 4.78 m
AREA: 34.05 m² • PERIMETER: 25.31 m



▼ Living Room Ground Floor

WIDTH: 2.98 m • LENGTH: 3.50 m
AREA: 10.43 m² • PERIMETER: 12.96 m



▼ Other
Ground Floor

WIDTH: 2.54 m • LENGTH: 4.01 m
AREA: 10.18 m² • PERIMETER: 13.09 m

