

# 7 Brodie Drive

**SUBMITTED BY**

Ray White Rockhampton Casey  
stockers@cqoz.com

---

**CREATED ON**

2022-09-05

---

**Floors**

1

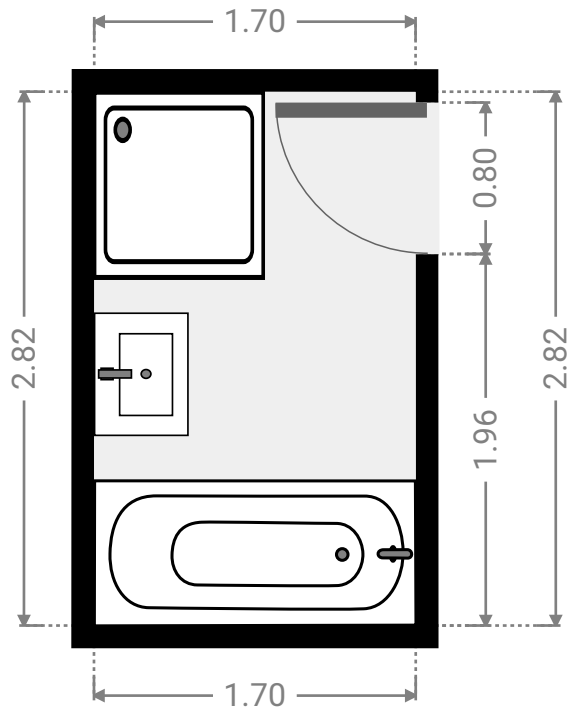
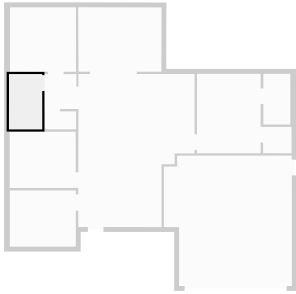
---

## ▼ Ground Floor



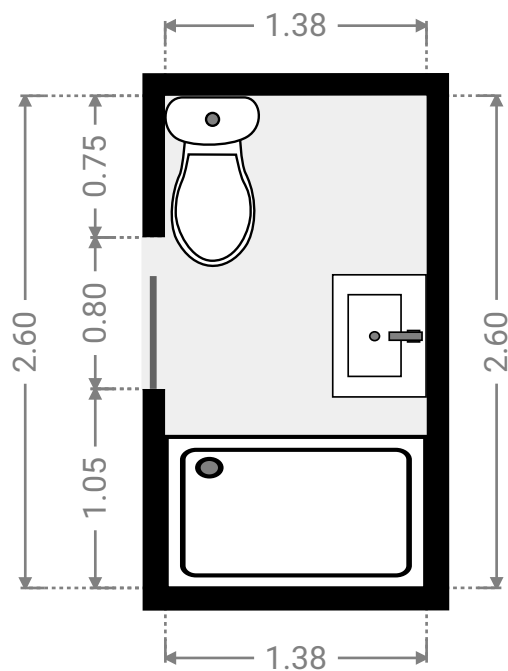
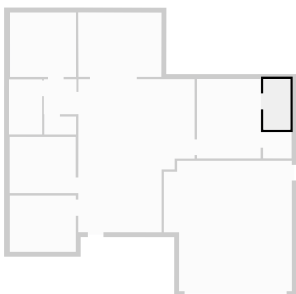
▼ **Bathroom**  
Ground Floor

WIDTH: 1.70 m • LENGTH: 2.82 m  
AREA: 4.79 m<sup>2</sup> • PERIMETER: 9.04 m



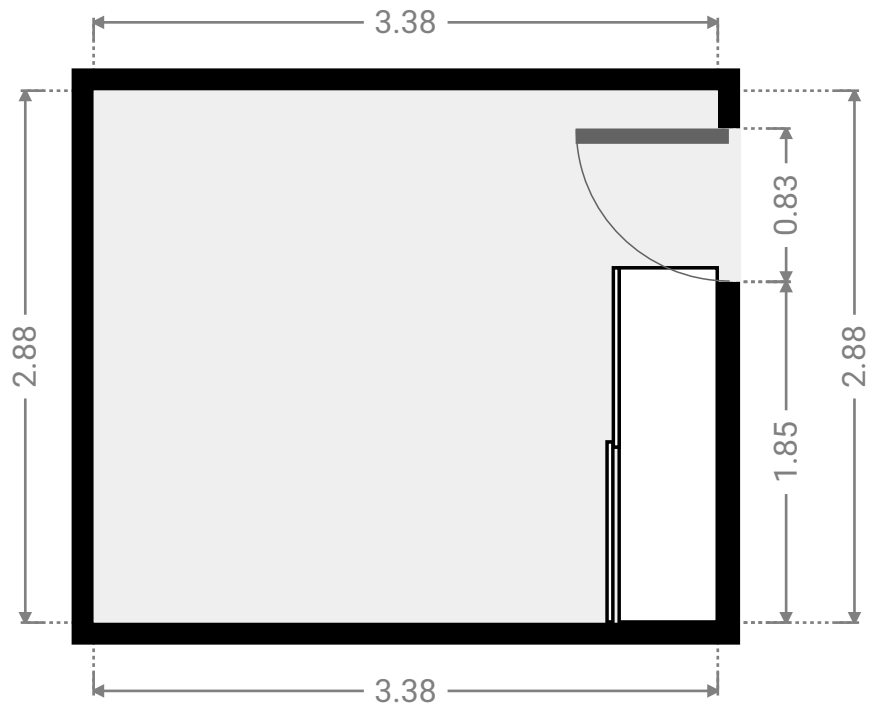
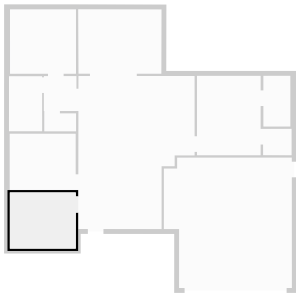
▼ **Bathroom**  
Ground Floor

WIDTH: 1.38 m • LENGTH: 2.60 m  
AREA: 3.59 m<sup>2</sup> • PERIMETER: 7.96 m



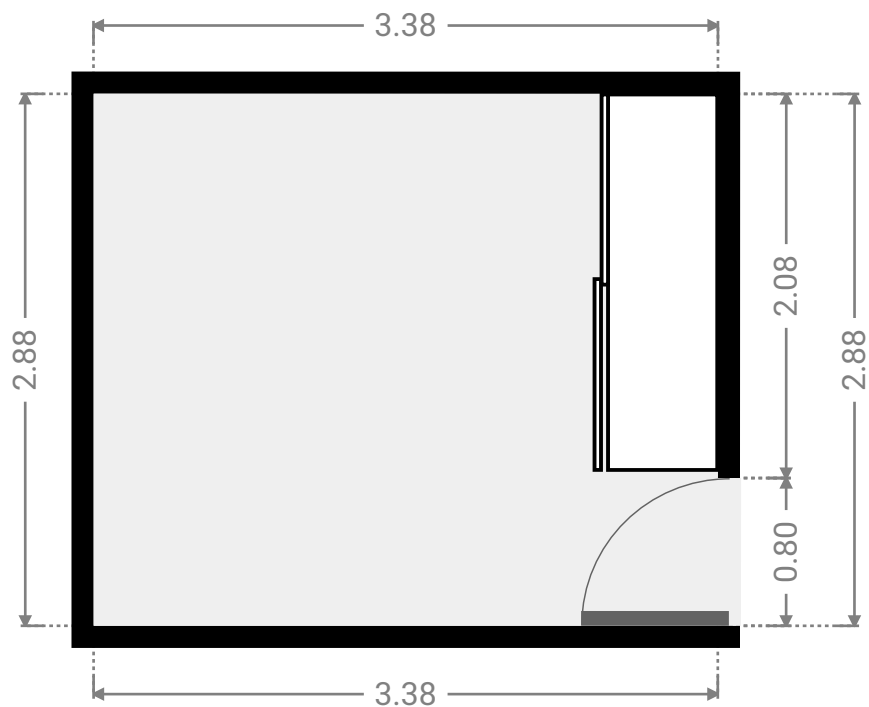
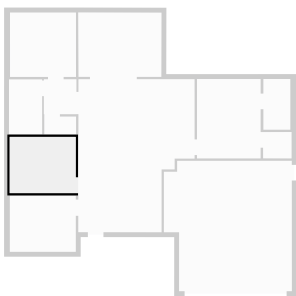
▼ **Bedroom**  
Ground Floor

WIDTH: 3.38 m • LENGTH: 2.88 m  
AREA: 9.73 m<sup>2</sup> • PERIMETER: 12.52 m



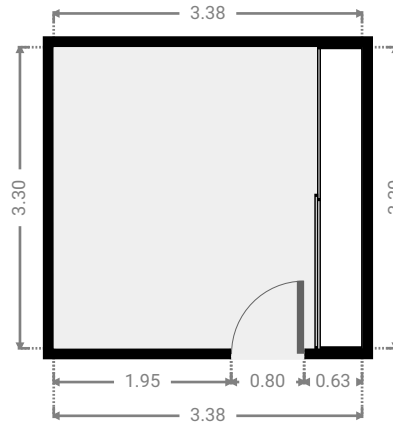
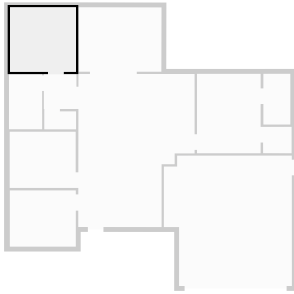
▼ **Bedroom**  
Ground Floor

WIDTH: 3.38 m • LENGTH: 2.88 m  
AREA: 9.74 m<sup>2</sup> • PERIMETER: 12.52 m



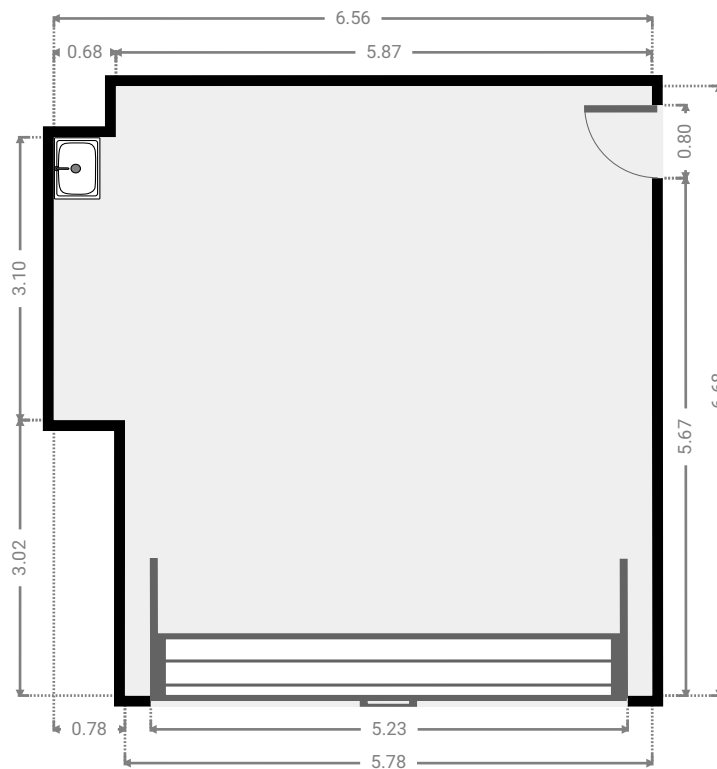
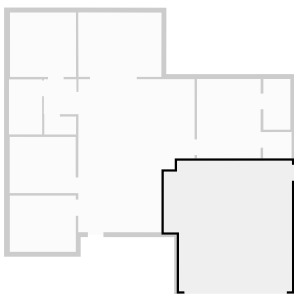
▼ **Bedroom**  
Ground Floor

WIDTH: 3.38 m • LENGTH: 3.30 m  
AREA: 11.15 m<sup>2</sup> • PERIMETER: 13.36 m



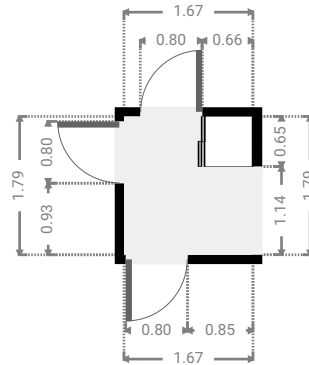
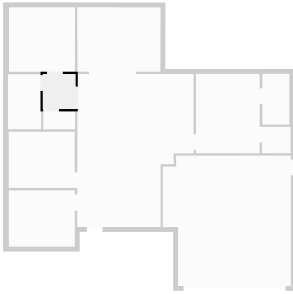
▼ **Garage**  
Ground Floor

WIDTH: 6.56 m • LENGTH: 6.68 m  
AREA: 41.07 m<sup>2</sup> • PERIMETER: 26.48 m



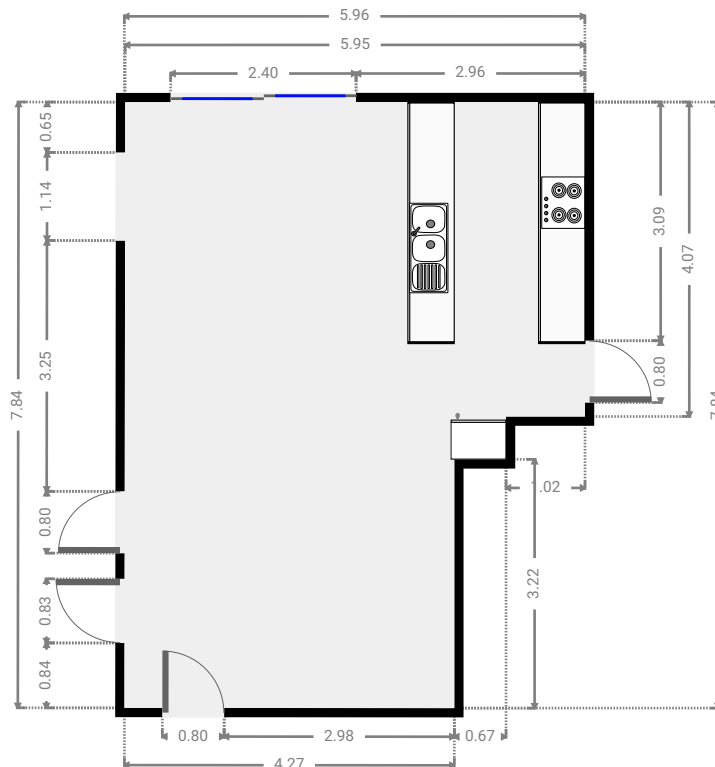
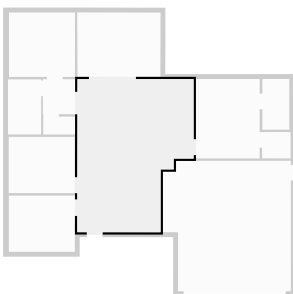
▼ Hall  
Ground Floor

WIDTH: 1.67 m • LENGTH: 1.79 m  
AREA: 2.99 m<sup>2</sup> • PERIMETER: 6.92 m



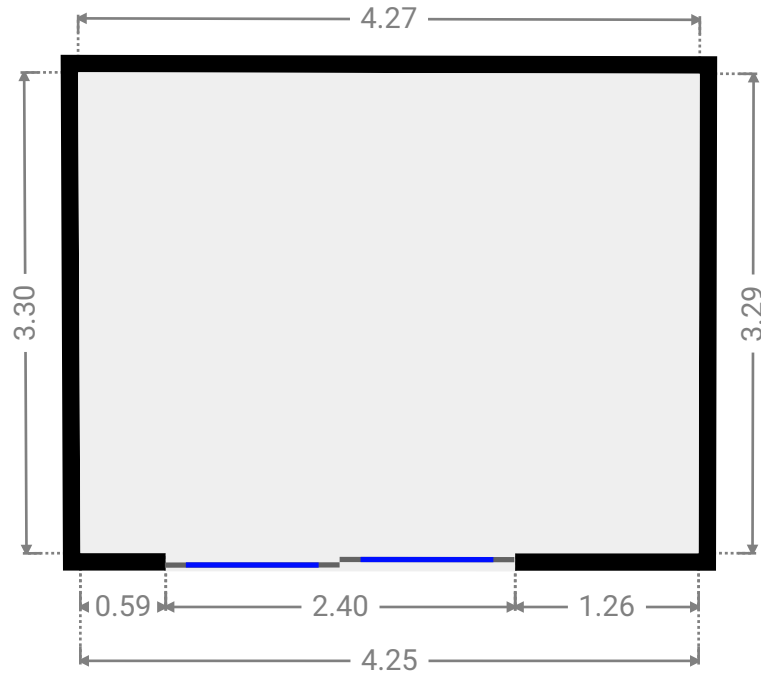
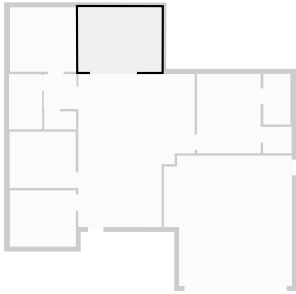
▼ Other  
Ground Floor

WIDTH: 5.96 m • LENGTH: 7.84 m  
AREA: 40.70 m<sup>2</sup> • PERIMETER: 27.60 m



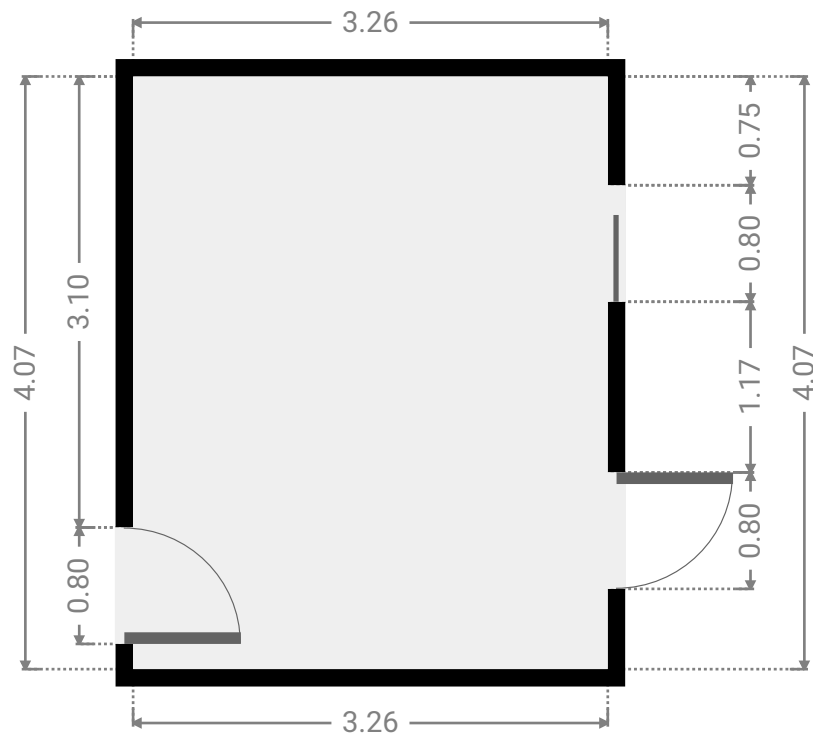
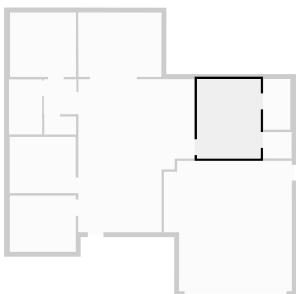
▼ **Other**  
Ground Floor

WIDTH: 4.27 m • LENGTH: 3.30 m  
AREA: 14.04 m<sup>2</sup> • PERIMETER: 15.11 m



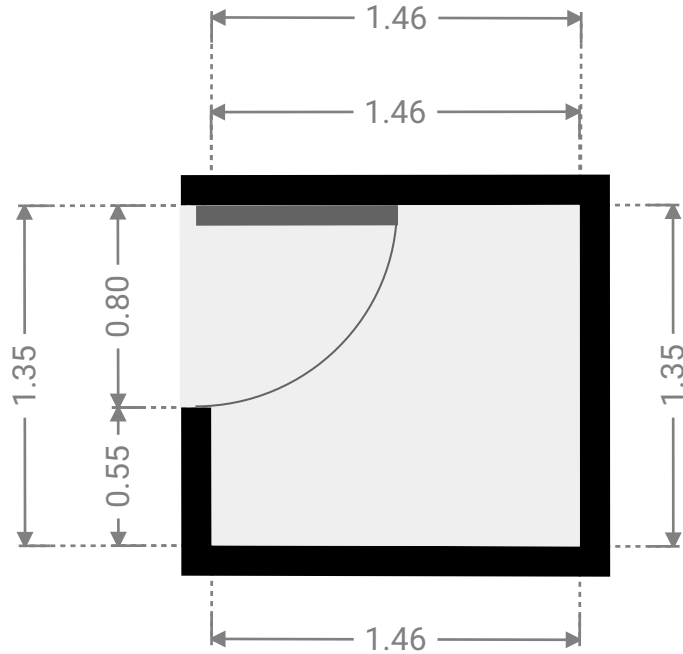
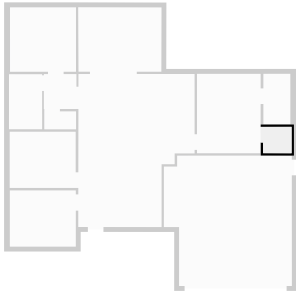
▼ **Primary Bedroom**  
Ground Floor

WIDTH: 3.26 m • LENGTH: 4.07 m  
AREA: 13.27 m<sup>2</sup> • PERIMETER: 14.66 m



▼ **Closet**  
Ground Floor

WIDTH: 1.46 m • LENGTH: 1.35 m  
AREA: 1.97 m<sup>2</sup> • PERIMETER: 5.62 m



▼ **Toilet**  
Ground Floor

WIDTH: 1.63 m • LENGTH: 0.92 m  
AREA: 1.50 m<sup>2</sup> • PERIMETER: 5.10 m

