

# 7 Belfield Avenue

**SUBMITTED BY**  
Ray White Rockhampton Casey  
stockers@cqoz.com

---

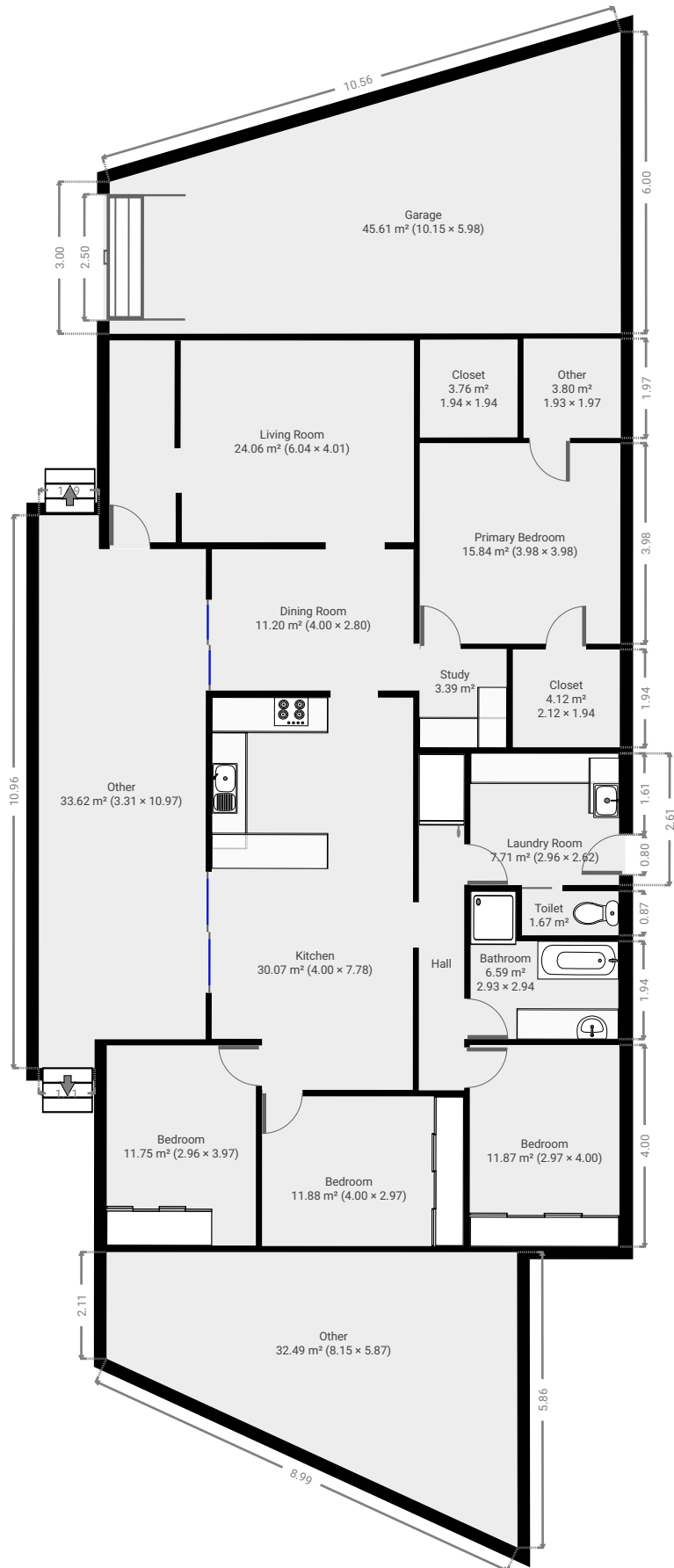
**CREATED ON**  
2022-07-04

---

**Floors**  
1

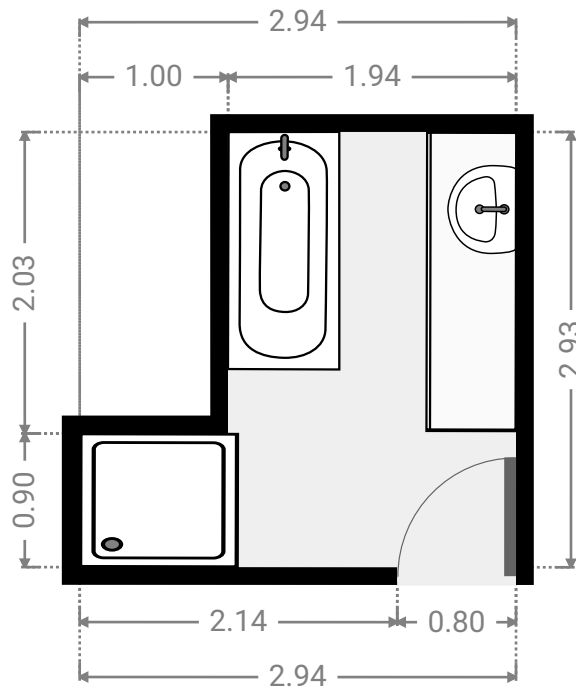
---

▼ Ground Floor



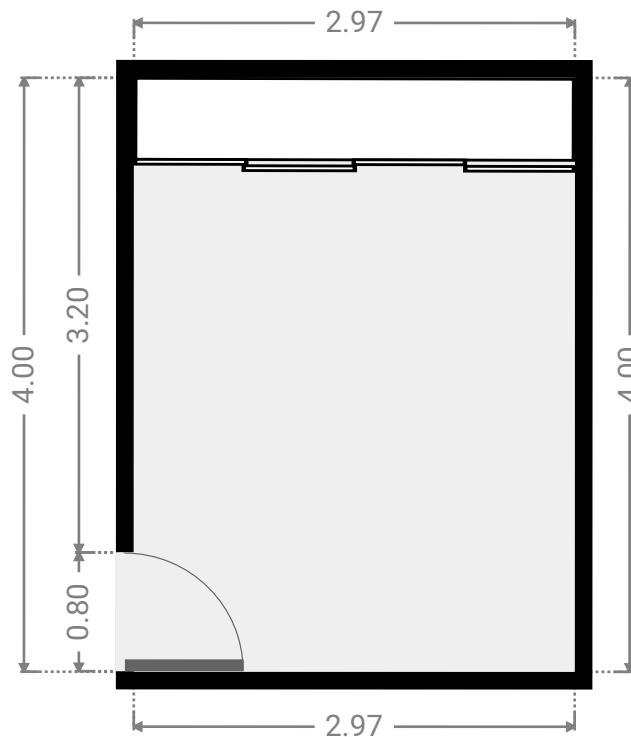
▼ **Bathroom**  
Ground Floor

WIDTH: 2.94 m • LENGTH: 2.93 m  
AREA: 6.59 m<sup>2</sup> • PERIMETER: 11.74 m



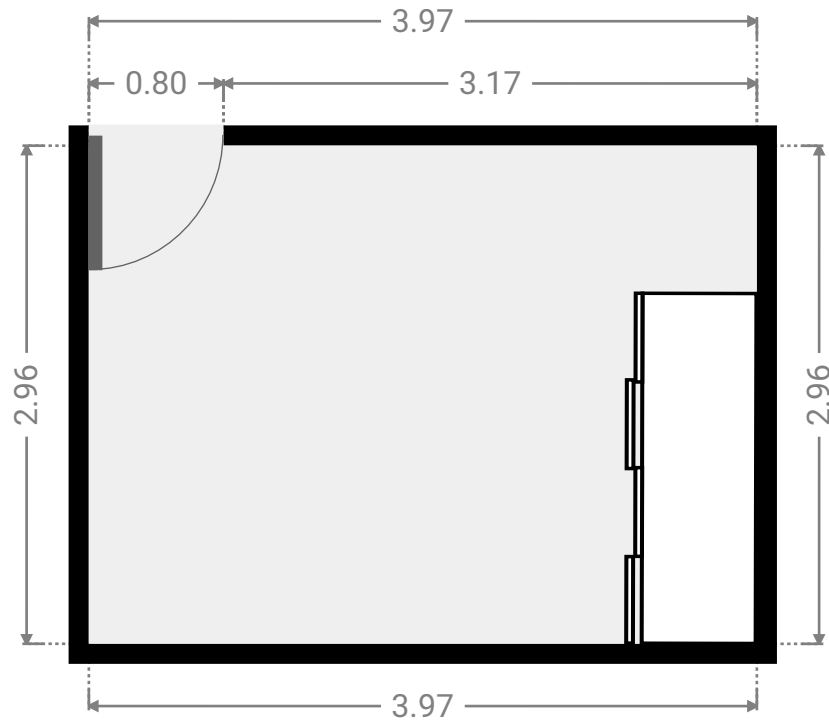
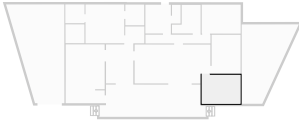
▼ **Bedroom**  
Ground Floor

WIDTH: 2.97 m • LENGTH: 4.00 m  
AREA: 11.88 m<sup>2</sup> • PERIMETER: 13.94 m



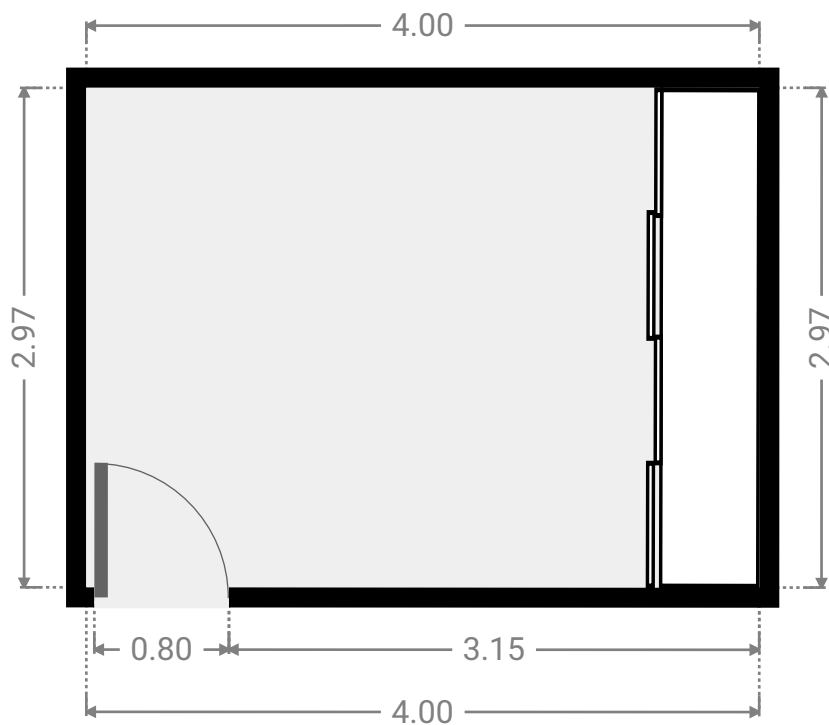
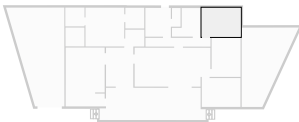
▼ **Bedroom**  
Ground Floor

WIDTH: 3.97 m • LENGTH: 2.96 m  
AREA: 11.75 m<sup>2</sup> • PERIMETER: 13.86 m



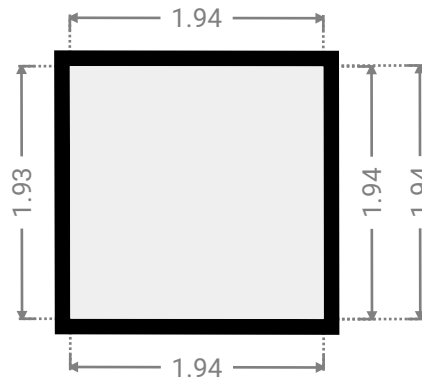
▼ **Bedroom**  
Ground Floor

WIDTH: 4.00 m • LENGTH: 2.97 m  
AREA: 11.87 m<sup>2</sup> • PERIMETER: 13.94 m



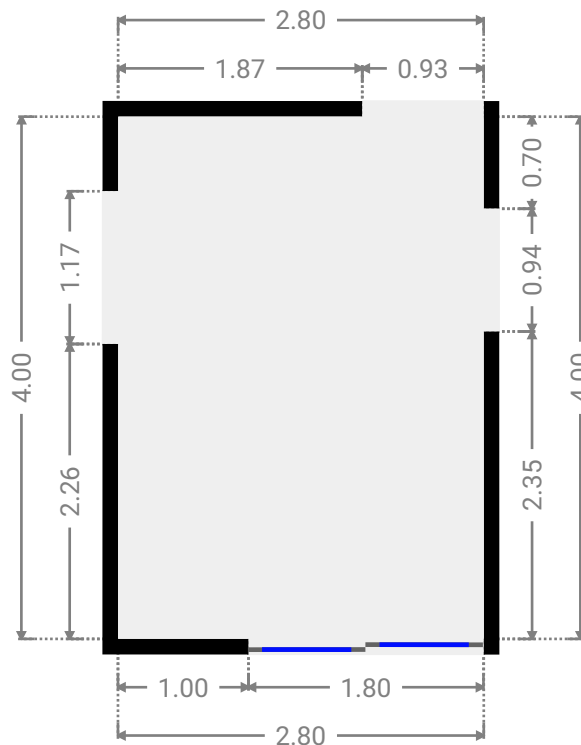
▼ **Closet**  
Ground Floor

WIDTH: 1.94 m • LENGTH: 1.94 m  
AREA: 3.76 m<sup>2</sup> • PERIMETER: 7.75 m



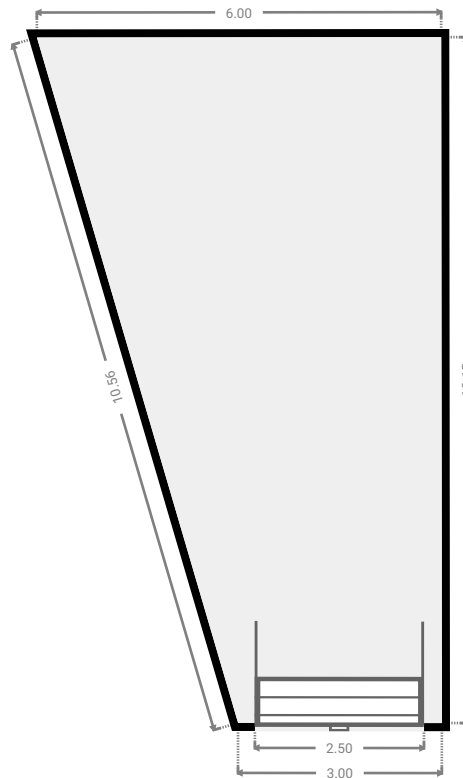
▼ **Dining Room**  
Ground Floor

WIDTH: 2.80 m • LENGTH: 4.00 m  
AREA: 11.20 m<sup>2</sup> • PERIMETER: 13.60 m



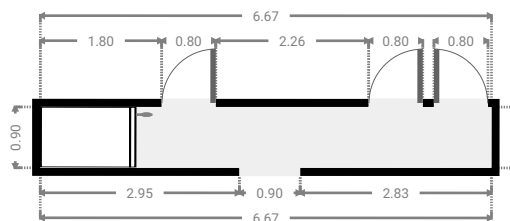
▼ **Garage**  
Ground Floor

WIDTH: 5.98 m • LENGTH: 10.15 m  
AREA: 45.61 m<sup>2</sup> • PERIMETER: 29.71 m



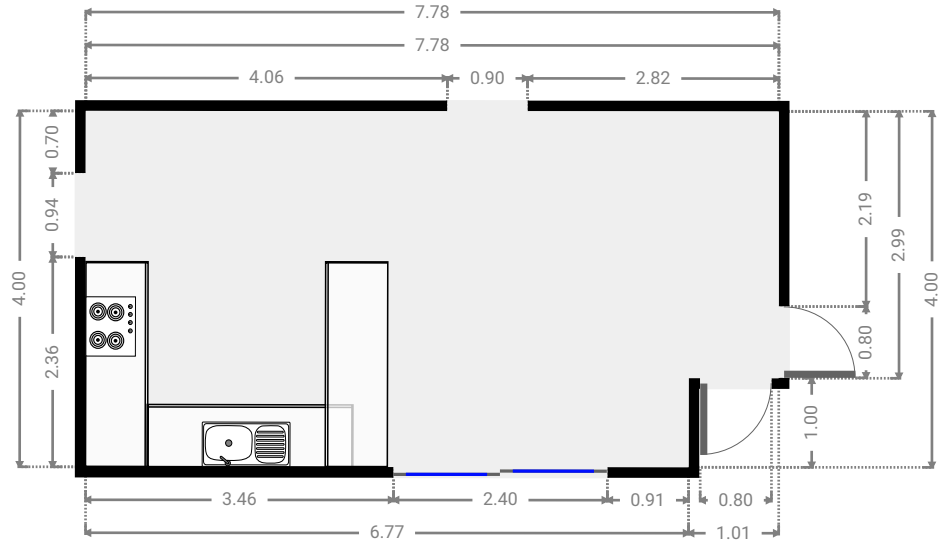
▼ **Hall**  
Ground Floor

WIDTH: 6.67 m • LENGTH: 0.90 m  
AREA: 6.01 m<sup>2</sup> • PERIMETER: 15.15 m



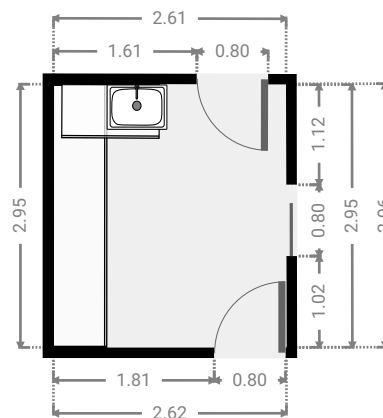
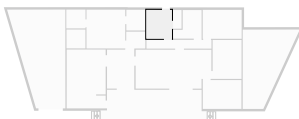
▼ Kitchen  
Ground Floor

WIDTH: 7.78 m • LENGTH: 4.00 m  
AREA: 30.07 m<sup>2</sup> • PERIMETER: 23.55 m



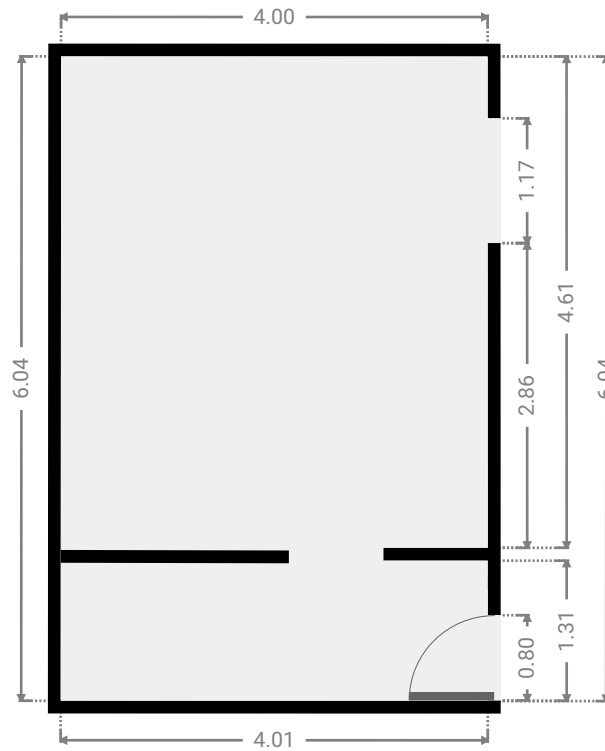
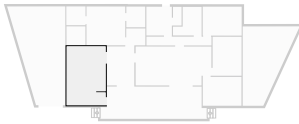
▼ Laundry Room  
Ground Floor

WIDTH: 2.62 m • LENGTH: 2.96 m  
AREA: 7.71 m<sup>2</sup> • PERIMETER: 11.13 m



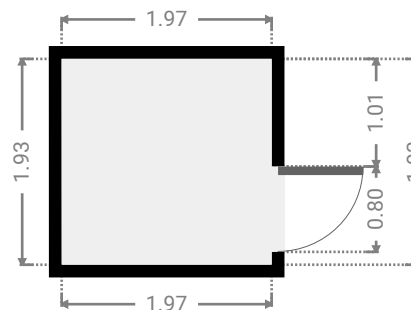
▼ Living Room  
Ground Floor

WIDTH: 4.01 m • LENGTH: 6.04 m  
AREA: 24.06 m<sup>2</sup> • PERIMETER: 22.05 m



▼ Other  
Ground Floor

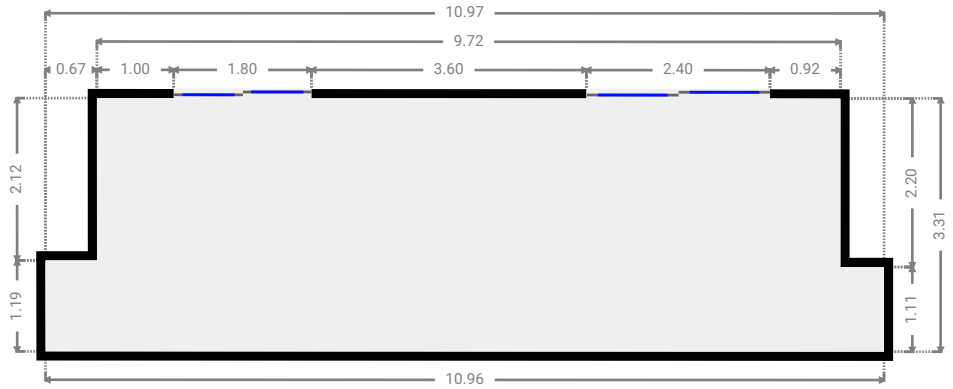
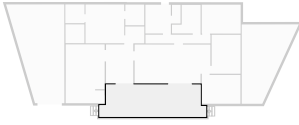
WIDTH: 1.97 m • LENGTH: 1.93 m  
AREA: 3.80 m<sup>2</sup> • PERIMETER: 7.80 m





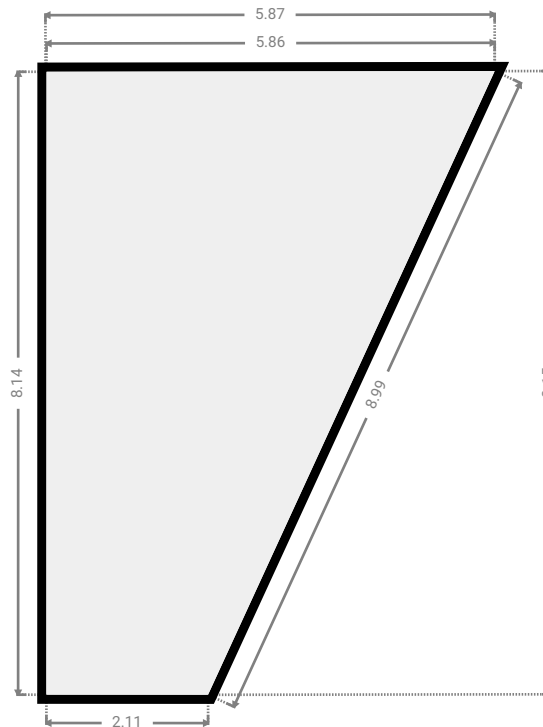
▼ Other  
Ground Floor

WIDTH: 10.97 m • LENGTH: 3.31 m  
AREA: 33.62 m<sup>2</sup> • PERIMETER: 28.55 m



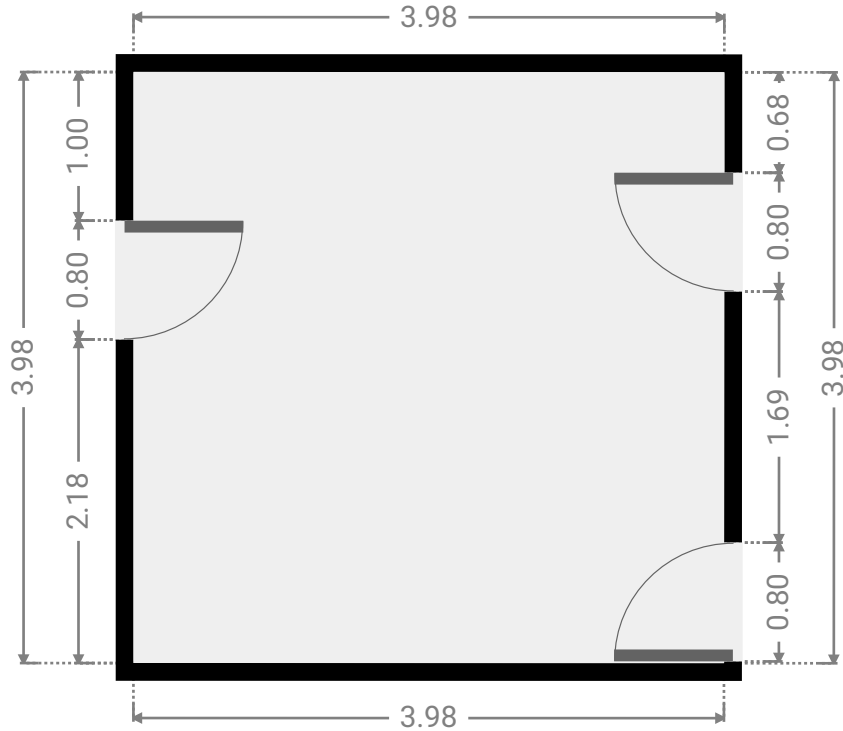
▼ Other  
Ground Floor

WIDTH: 5.87 m • LENGTH: 8.15 m  
AREA: 32.49 m<sup>2</sup> • PERIMETER: 25.09 m



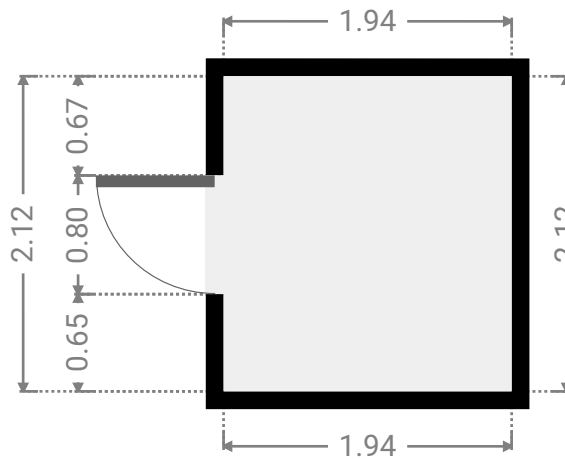
▼ **Primary Bedroom**  
Ground Floor

WIDTH: 3.98 m • LENGTH: 3.98 m  
AREA: 15.84 m<sup>2</sup> • PERIMETER: 15.92 m



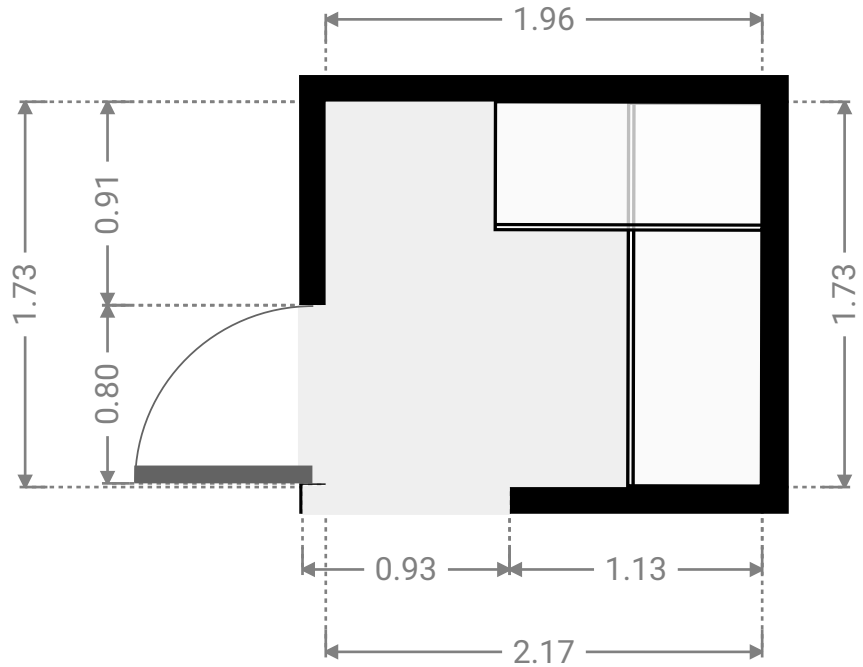
▼ **Closet**  
Ground Floor

WIDTH: 1.94 m • LENGTH: 2.12 m  
AREA: 4.12 m<sup>2</sup> • PERIMETER: 8.13 m



▼ **Study**  
Ground Floor

WIDTH: 1.96 m • LENGTH: 1.73 m  
AREA: 3.39 m<sup>2</sup> • PERIMETER: 7.38 m



▼ **Toilet**  
Ground Floor

WIDTH: 0.88 m • LENGTH: 1.91 m  
AREA: 1.67 m<sup>2</sup> • PERIMETER: 5.58 m

