

7/200 Canning Street

SUBMITTED BY

Ray White Rockhampton Casey
stockers@cqoz.com

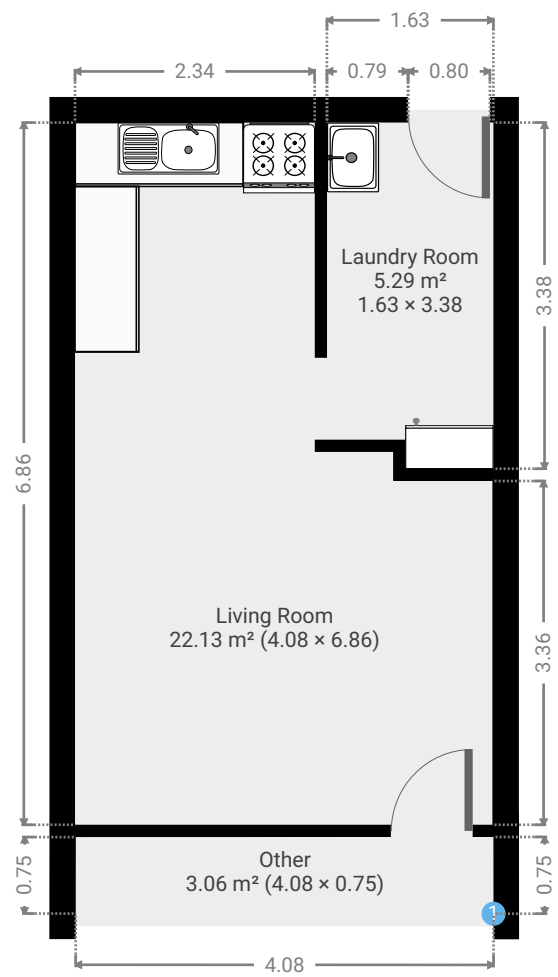
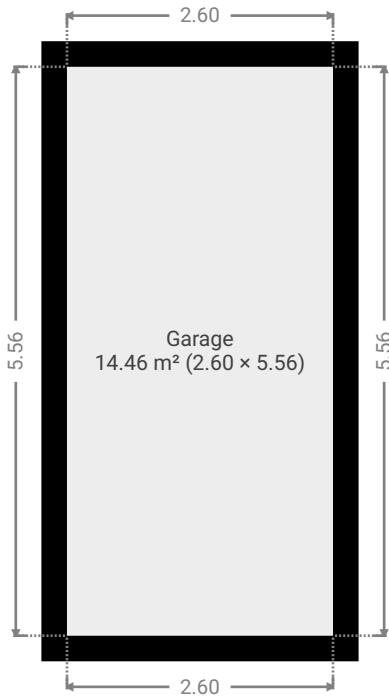
CREATED ON

2022-07-04

Floors

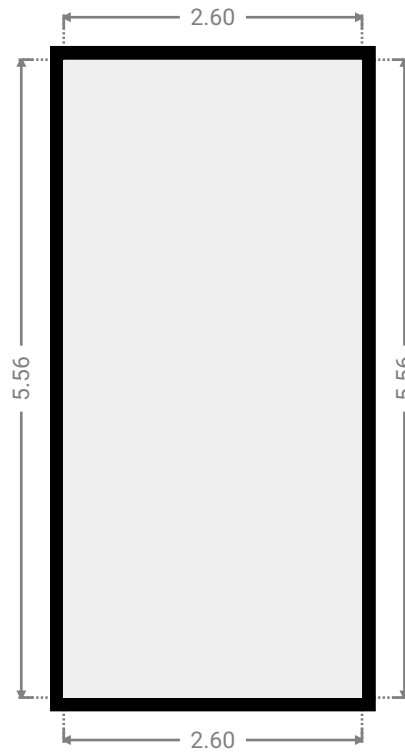
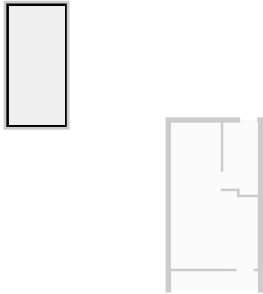
2

▼ Ground Floor



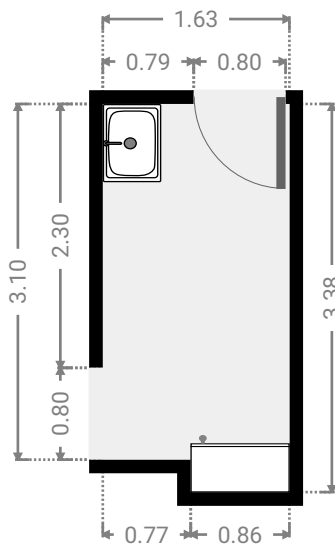
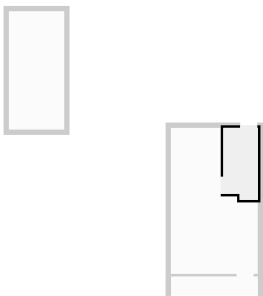
▼ **Garage**
Ground Floor

WIDTH: 2.60 m • LENGTH: 5.56 m
AREA: 14.46 m² • PERIMETER: 16.32 m



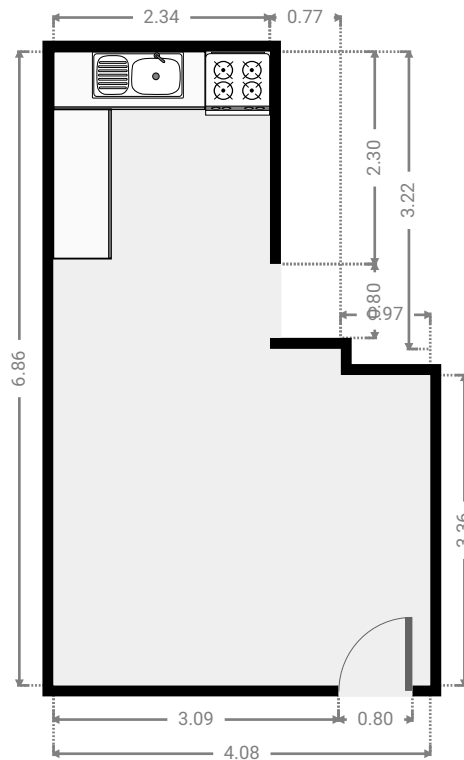
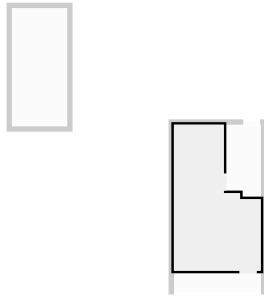
▼ **Laundry Room**
Ground Floor

WIDTH: 1.71 m • LENGTH: 3.38 m
AREA: 5.29 m² • PERIMETER: 10.02 m



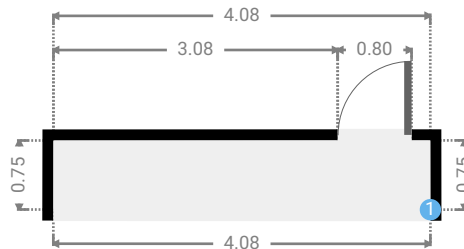
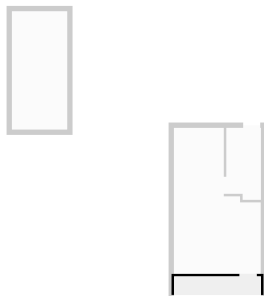
▼ **Living Room**
Ground Floor

WIDTH: 4.08 m • LENGTH: 6.86 m
AREA: 22.13 m² • PERIMETER: 21.88 m



▼ **Other**
Ground Floor

WIDTH: 4.08 m • LENGTH: 0.75 m
AREA: 3.06 m² • PERIMETER: 9.66 m



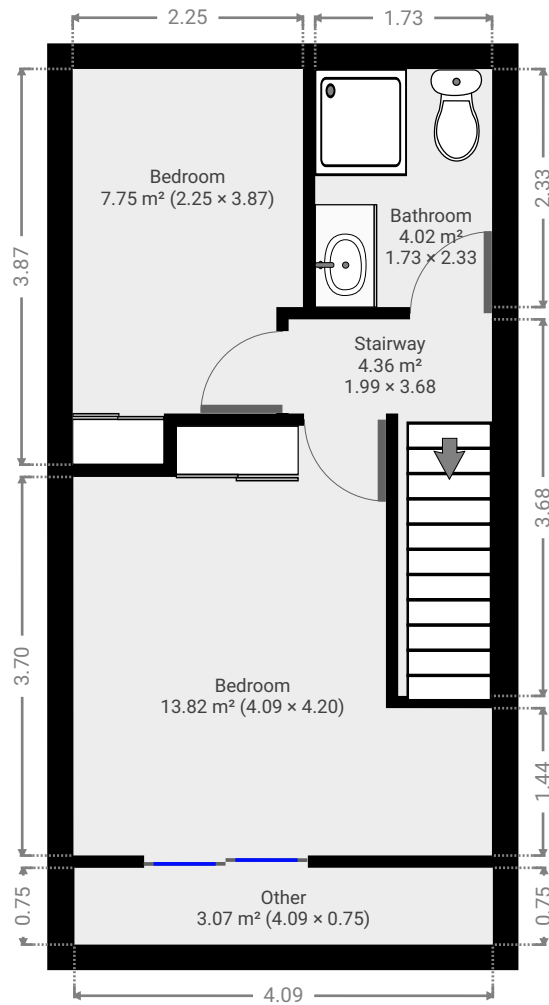
▼ Other/Ground Floor

1 OPENING

Height
0.00 m

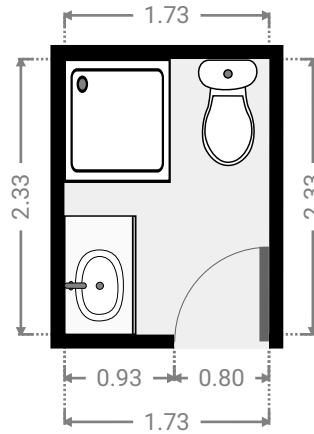
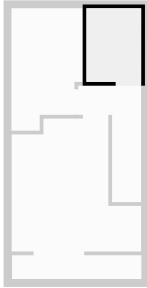


▼ 1st Floor



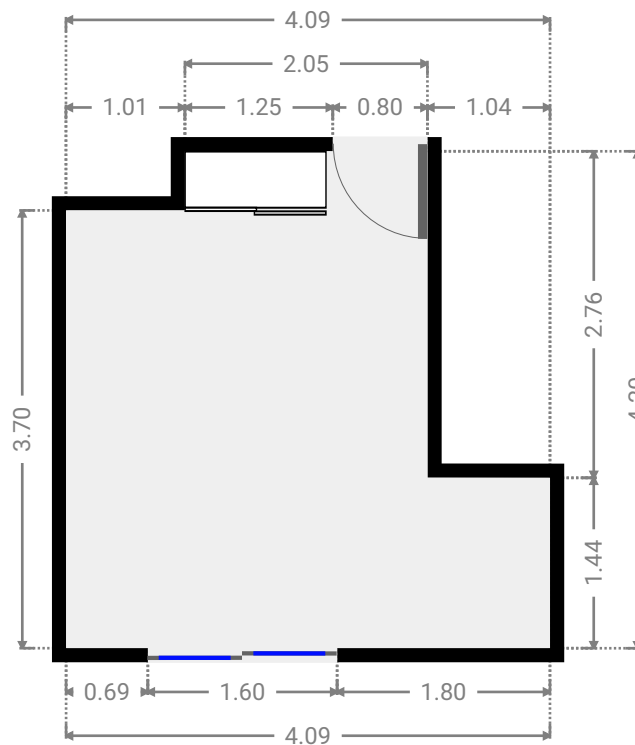
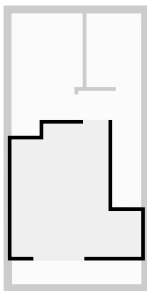
▼ **Bathroom**
1st Floor

WIDTH: 1.73 m • LENGTH: 2.33 m
AREA: 4.02 m² • PERIMETER: 8.11 m



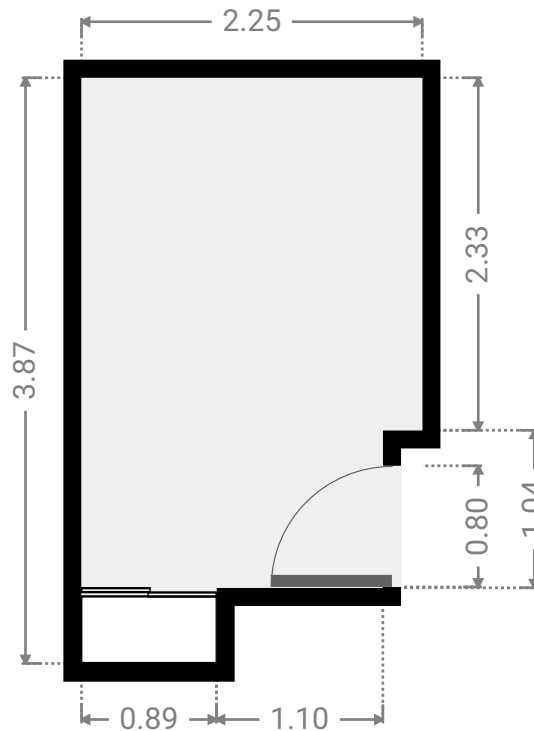
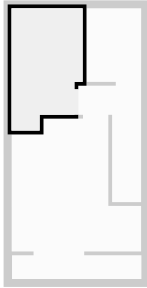
▼ **Bedroom**
1st Floor

WIDTH: 4.09 m • LENGTH: 4.20 m
AREA: 13.82 m² • PERIMETER: 16.58 m



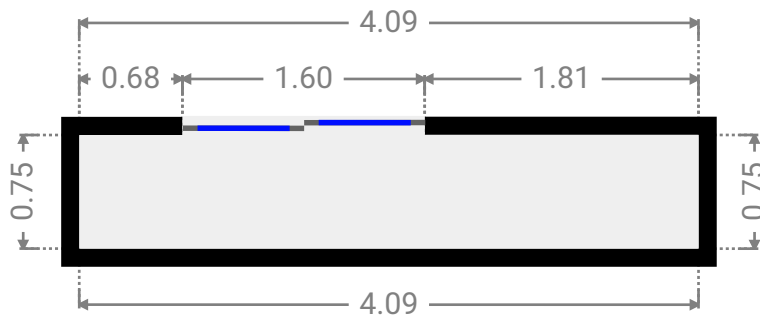
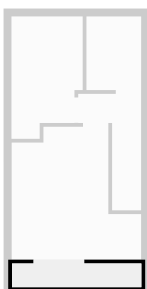
▼ **Bedroom**
1st Floor

WIDTH: 2.25 m • LENGTH: 3.87 m
AREA: 7.75 m² • PERIMETER: 12.24 m



▼ **Other**
1st Floor

WIDTH: 4.09 m • LENGTH: 0.75 m
AREA: 3.07 m² • PERIMETER: 9.68 m



▼ Stairway
1st Floor

WIDTH: 1.99 m • LENGTH: 3.68 m
AREA: 4.36 m² • PERIMETER: 11.33 m

