

# 68 Leamington Street

**SUBMITTED BY**

Ray White Rockhampton Casey  
stockers@cqoz.com

---

**CREATED ON**

2022-08-02

---

**Floors**

1

---

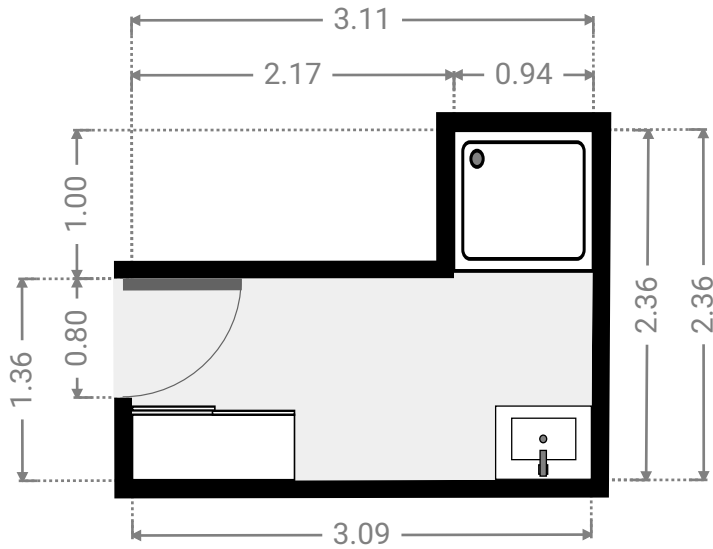
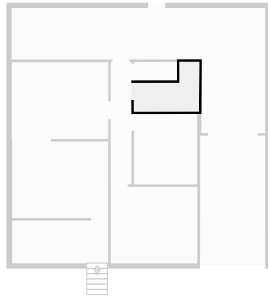
▼ Ground Floor



FLOORS: 1

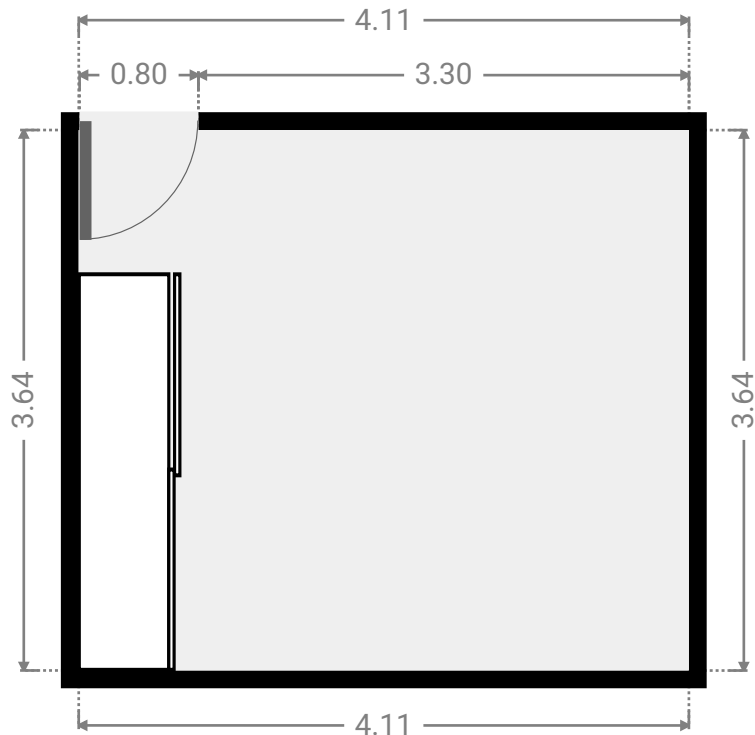
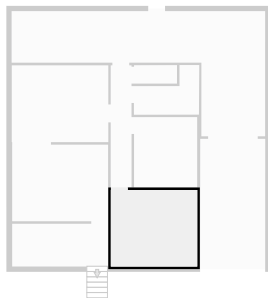
▼ **Bathroom**  
Ground Floor

WIDTH: 3.11 m • LENGTH: 2.36 m  
AREA: 5.14 m<sup>2</sup> • PERIMETER: 10.92 m



▼ **Bedroom**  
Ground Floor

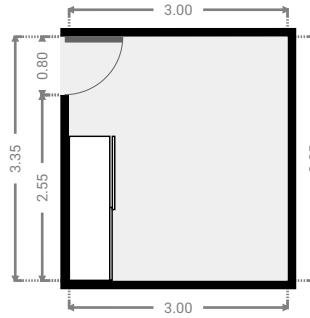
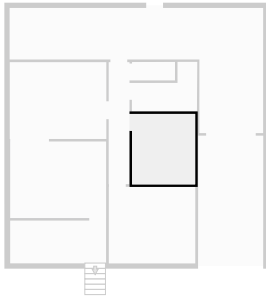
WIDTH: 4.11 m • LENGTH: 3.64 m  
AREA: 14.96 m<sup>2</sup> • PERIMETER: 15.50 m



FLOORS: 1

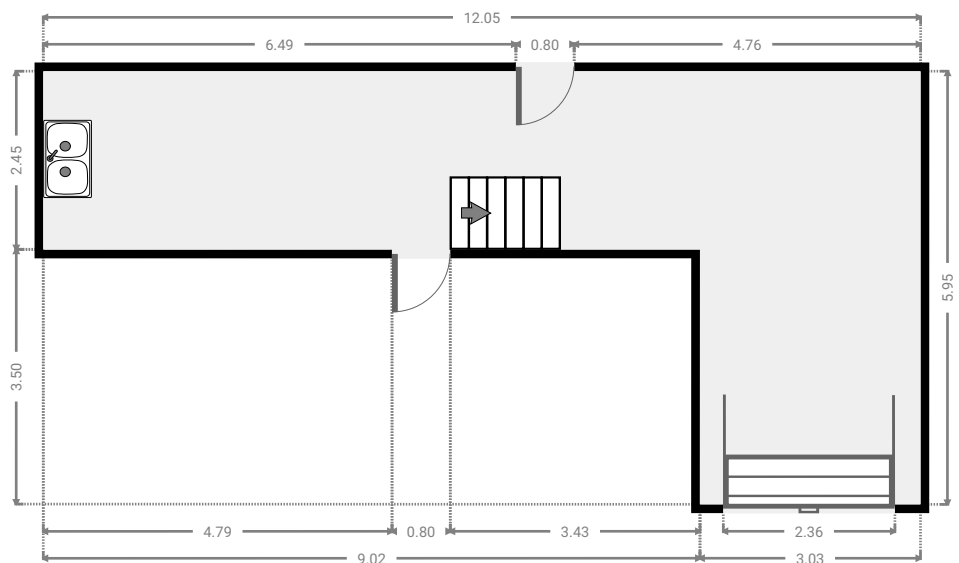
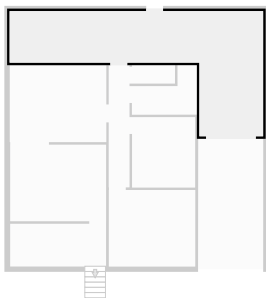
▼ Bedroom  
Ground Floor

WIDTH: 3.00 m • LENGTH: 3.35 m  
AREA: 10.05 m<sup>2</sup> • PERIMETER: 12.70 m



▼ Garage  
Ground Floor

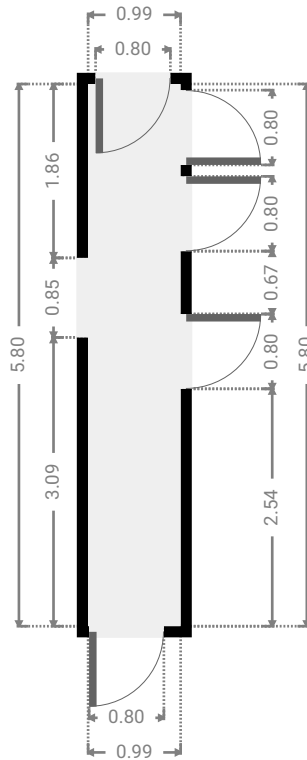
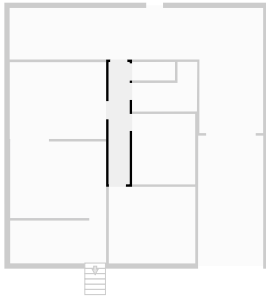
WIDTH: 12.05 m • LENGTH: 5.95 m  
AREA: 40.12 m<sup>2</sup> • PERIMETER: 36.00 m



FLOORS: 1

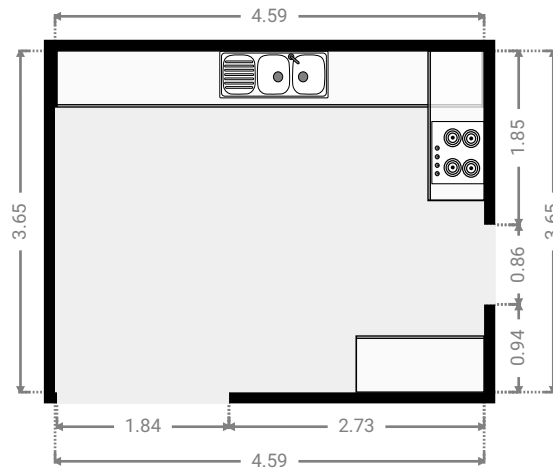
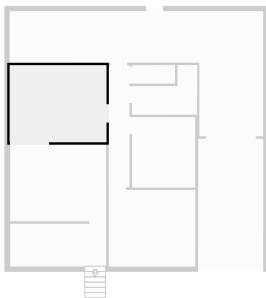
▼ **Hall**  
Ground Floor

WIDTH: 0.99 m • LENGTH: 5.80 m  
AREA: 5.74 m<sup>2</sup> • PERIMETER: 13.58 m



▼ **Kitchen**  
Ground Floor

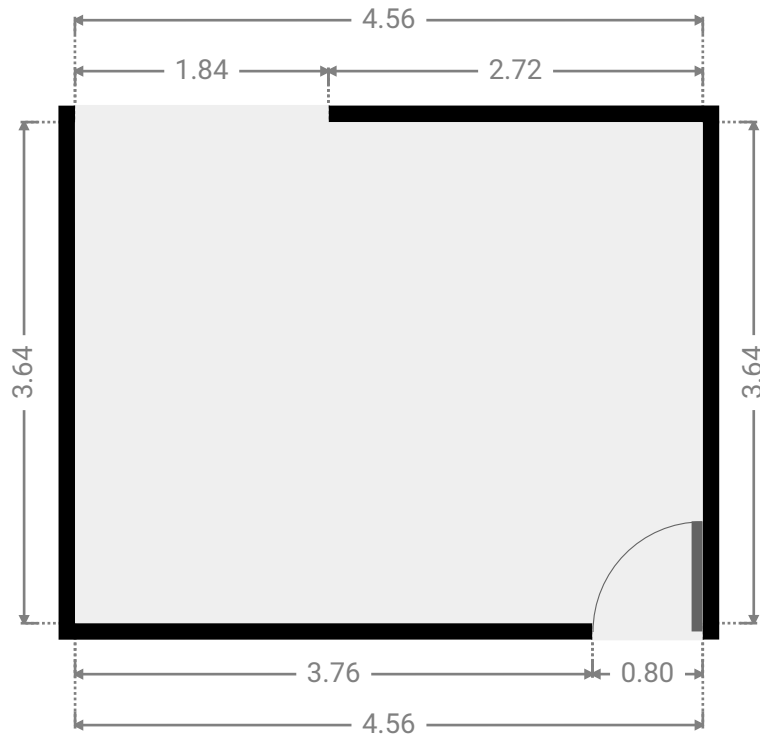
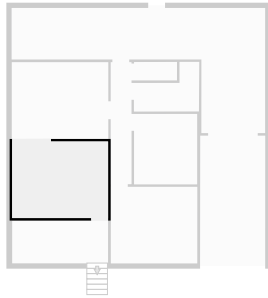
WIDTH: 4.59 m • LENGTH: 3.65 m  
AREA: 16.75 m<sup>2</sup> • PERIMETER: 16.48 m



FLOORS: 1

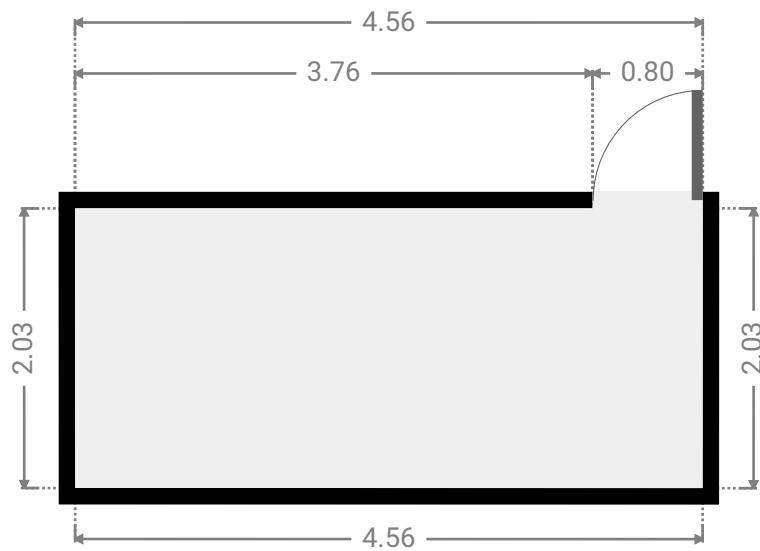
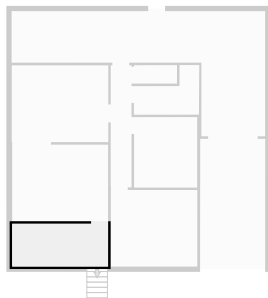
▼ **Living Room**  
Ground Floor

WIDTH: 4.56 m • LENGTH: 3.64 m  
AREA: 16.60 m<sup>2</sup> • PERIMETER: 16.40 m



▼ **Other**  
Ground Floor

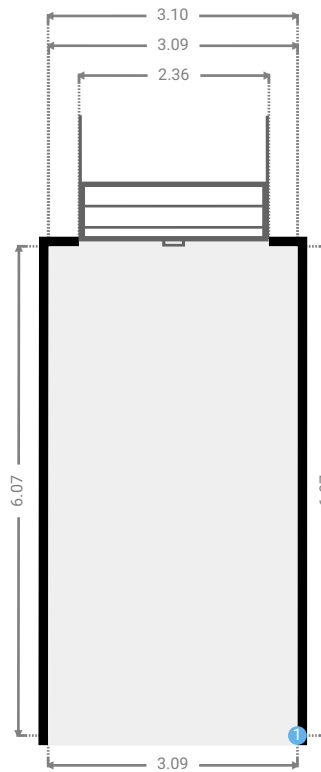
WIDTH: 4.56 m • LENGTH: 2.03 m  
AREA: 9.26 m<sup>2</sup> • PERIMETER: 13.18 m



FLOORS: 1

## ▼ Other Ground Floor

WIDTH: 3.10 m • LENGTH: 6.07 m  
AREA: 18.78 m<sup>2</sup> • PERIMETER: 18.33 m



## ▼ Other/Ground Floor

### 1 OPENING

Height  
0.00 m



FLOORS: 1

▼ Toilet  
Ground Floor

WIDTH: 2.04 m • LENGTH: 0.88 m  
AREA: 1.79 m<sup>2</sup> • PERIMETER: 5.83 m

