

# 67 Temora Crescent

**SUBMITTED BY**

Ray White Rockhampton Casey  
stockers@cqoz.com

---

**CREATED ON**

2022-08-22

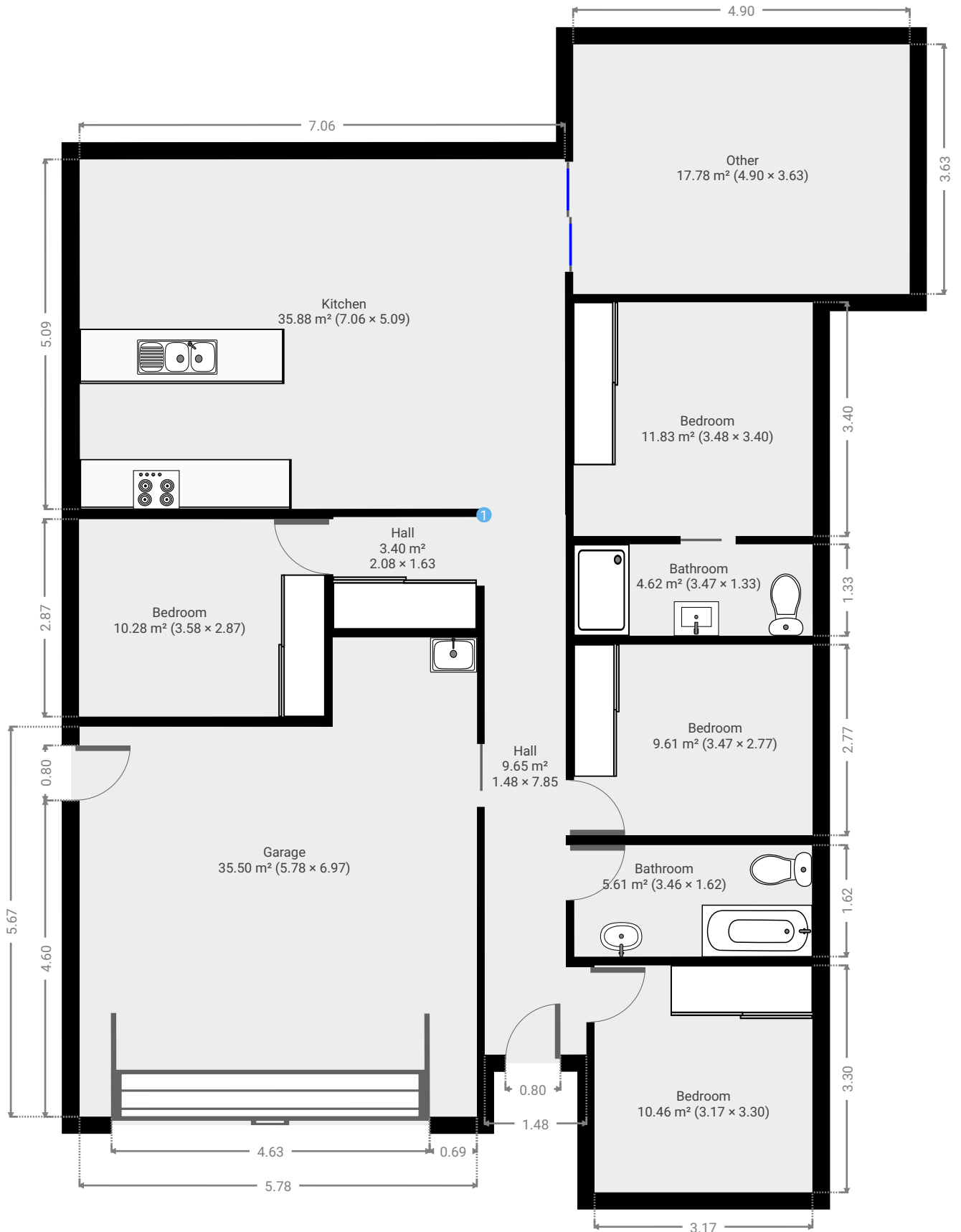
---

**Floors**

1

---

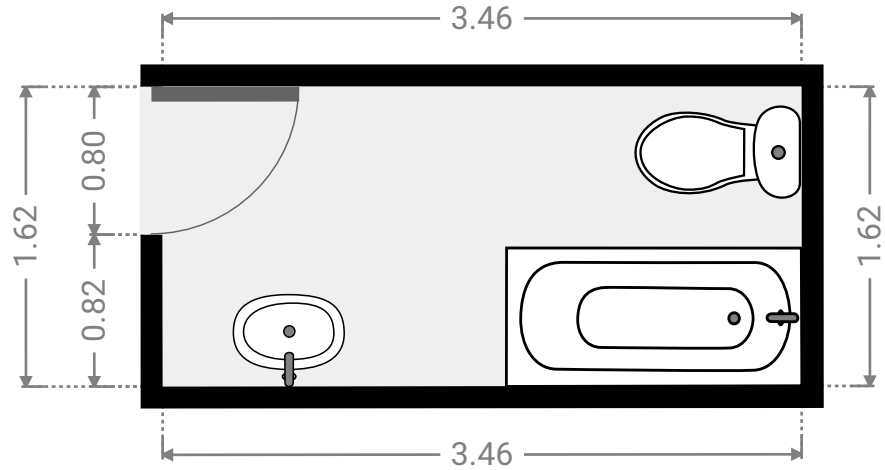
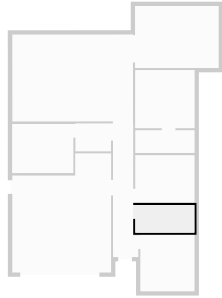
## ▼ Ground Floor



FLOORS: 1

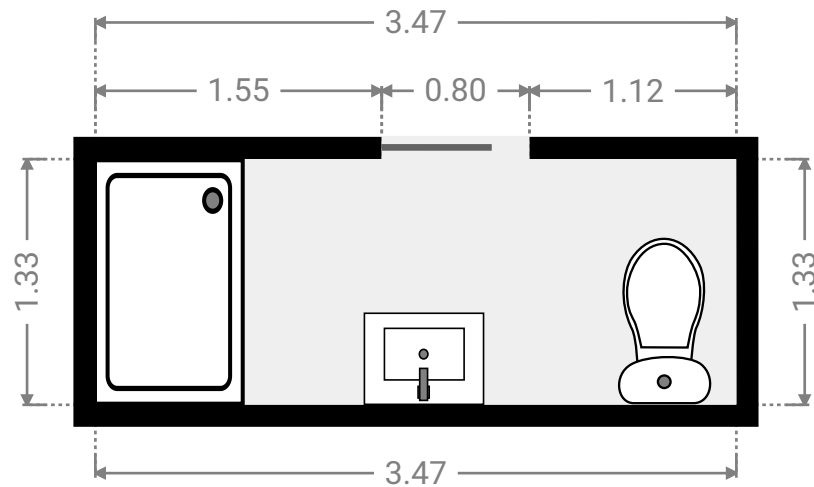
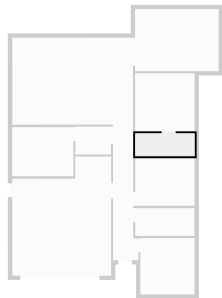
▼ Bathroom  
Ground Floor

WIDTH: 3.46 m • LENGTH: 1.62 m  
AREA: 5.61 m<sup>2</sup> • PERIMETER: 10.16 m



▼ Bathroom  
Ground Floor

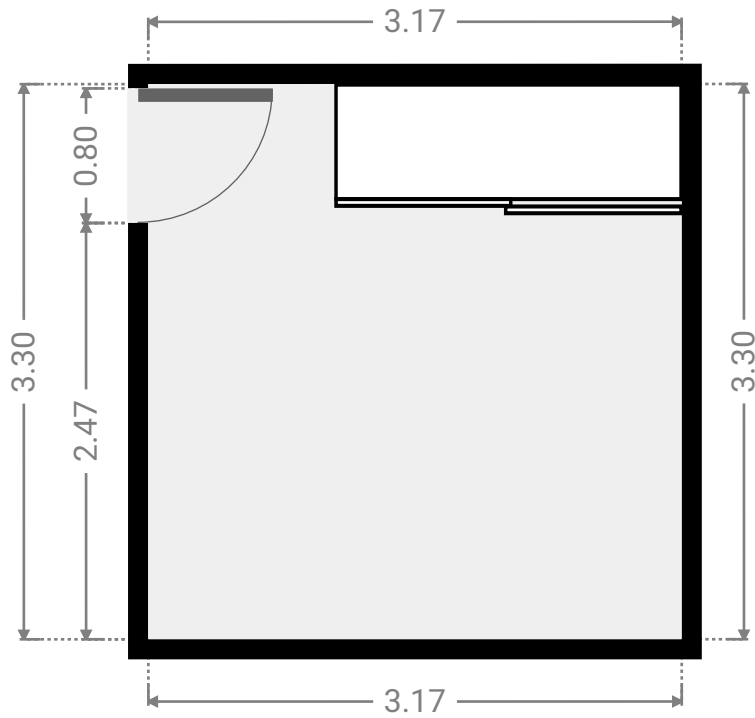
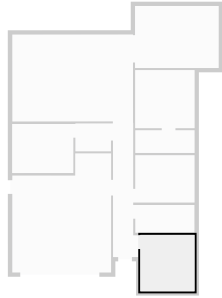
WIDTH: 3.47 m • LENGTH: 1.33 m  
AREA: 4.62 m<sup>2</sup> • PERIMETER: 9.60 m



FLOORS: 1

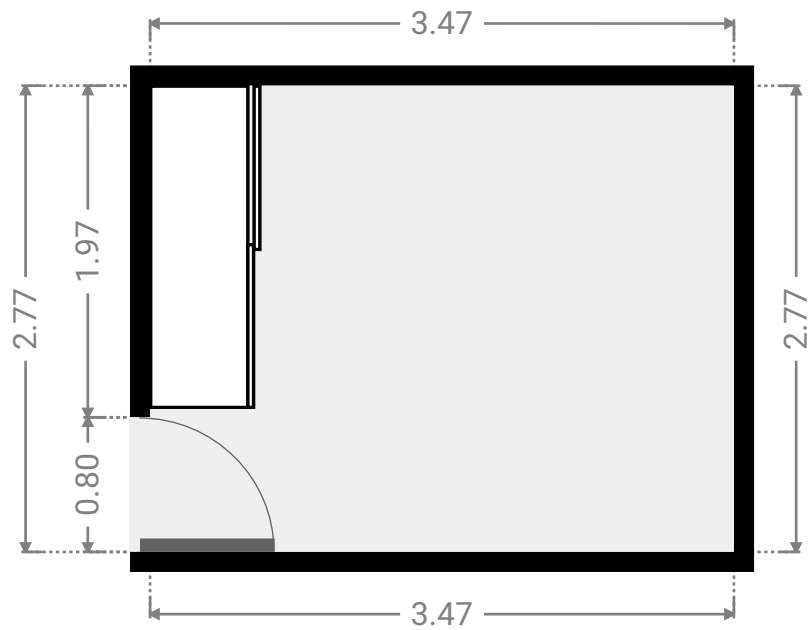
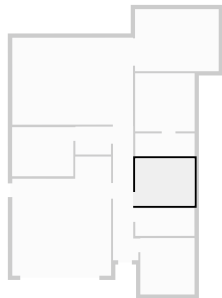
▼ **Bedroom**  
Ground Floor

WIDTH: 3.17 m • LENGTH: 3.30 m  
AREA: 10.46 m<sup>2</sup> • PERIMETER: 12.94 m



▼ **Bedroom**  
Ground Floor

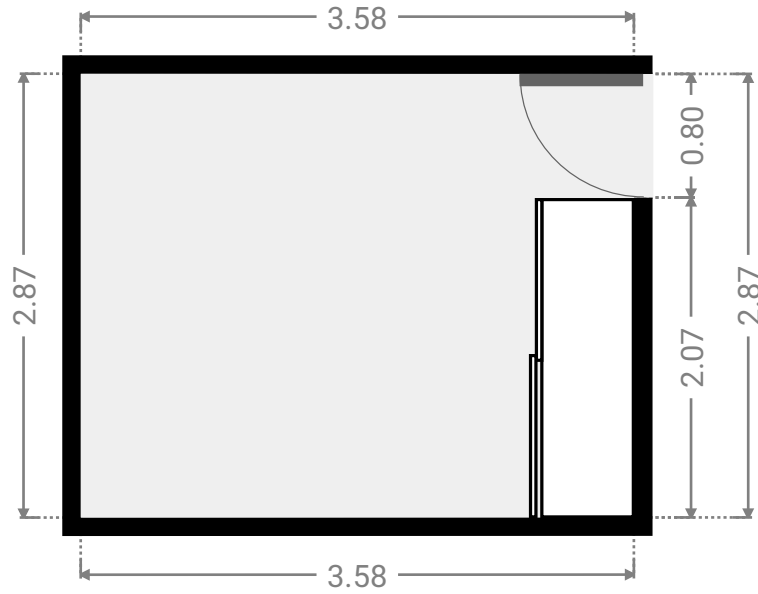
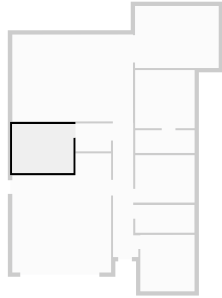
WIDTH: 3.47 m • LENGTH: 2.77 m  
AREA: 9.61 m<sup>2</sup> • PERIMETER: 12.48 m



FLOORS: 1

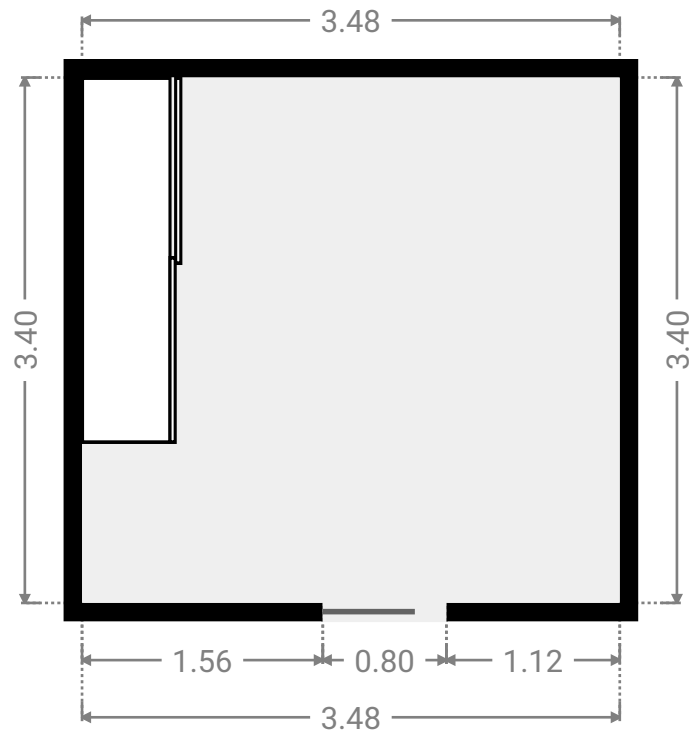
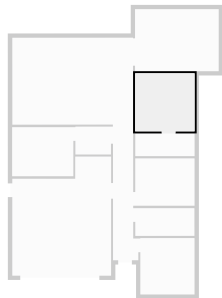
▼ **Bedroom**  
Ground Floor

WIDTH: 3.58 m • LENGTH: 2.87 m  
AREA: 10.28 m<sup>2</sup> • PERIMETER: 12.90 m



▼ **Bedroom**  
Ground Floor

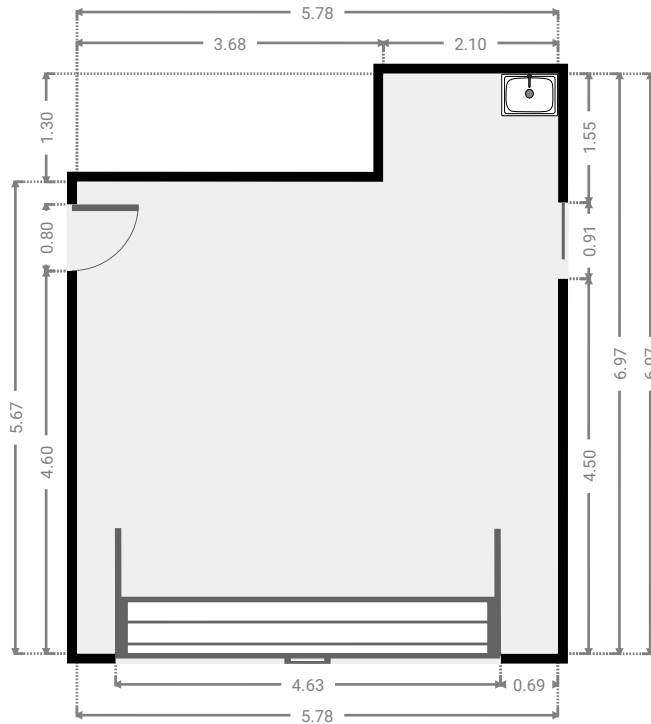
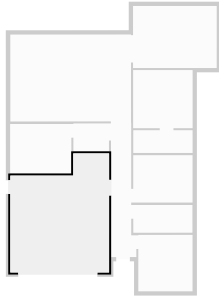
WIDTH: 3.48 m • LENGTH: 3.40 m  
AREA: 11.83 m<sup>2</sup> • PERIMETER: 13.76 m



FLOORS: 1

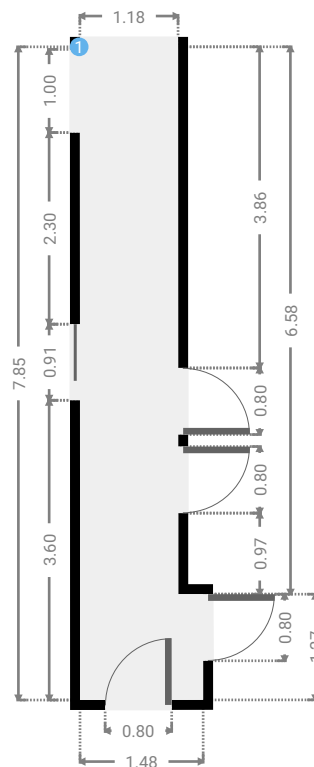
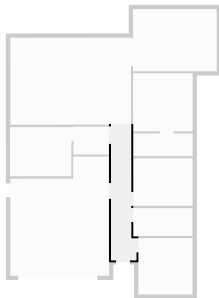
## ▼ Garage Ground Floor

WIDTH: 5.78 m • LENGTH: 6.97 m  
AREA: 35.50 m<sup>2</sup> • PERIMETER: 25.50 m



## ▼ Hall Ground Floor

WIDTH: 1.48 m • LENGTH: 7.85 m  
AREA: 9.65 m<sup>2</sup> • PERIMETER: 18.66 m



## ▼ Hall/Ground Floor

---

### 1 OPENING

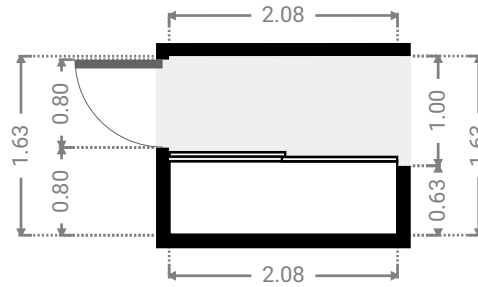
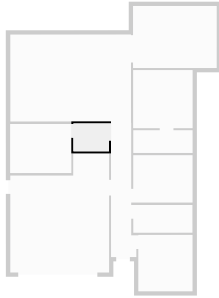
Height  
0.00 m



FLOORS: 1

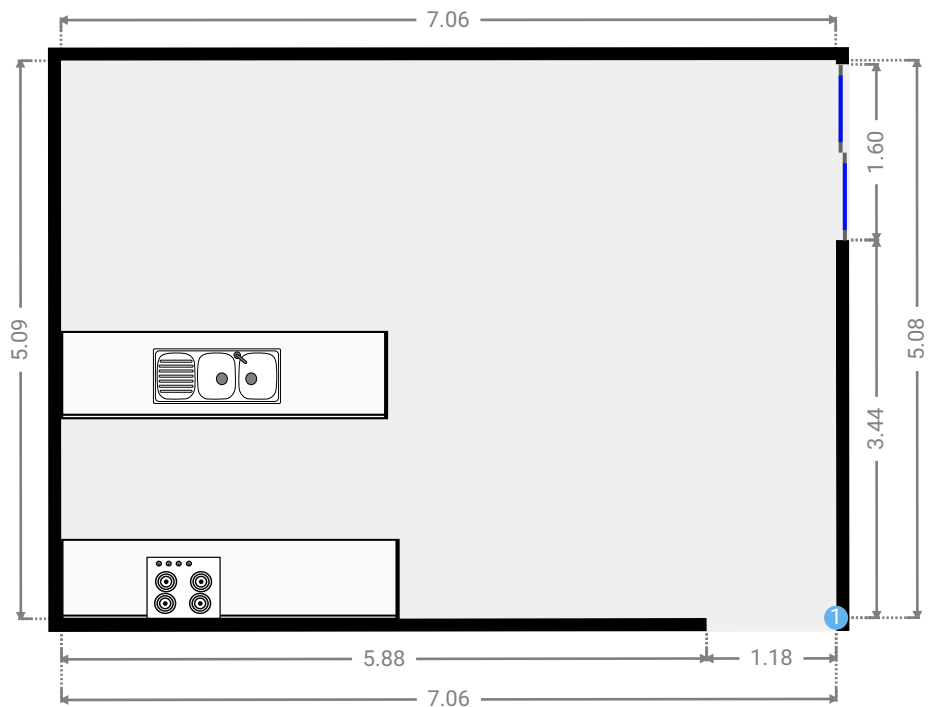
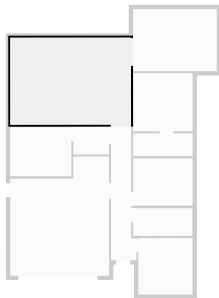
## ▼ Hall Ground Floor

WIDTH: 2.08 m • LENGTH: 1.63 m  
AREA: 3.40 m<sup>2</sup> • PERIMETER: 7.43 m



## ▼ Kitchen Ground Floor

WIDTH: 7.06 m • LENGTH: 5.09 m  
AREA: 35.88 m<sup>2</sup> • PERIMETER: 24.29 m





▼ Other  
Ground Floor

WIDTH: 4.90 m • LENGTH: 3.63 m  
AREA: 17.78 m<sup>2</sup> • PERIMETER: 17.05 m

