

66 Kershaw Street

SUBMITTED BY

Ray White Rockhampton Casey
stockers@cqoz.com

CREATED ON

2022-08-03

Floors

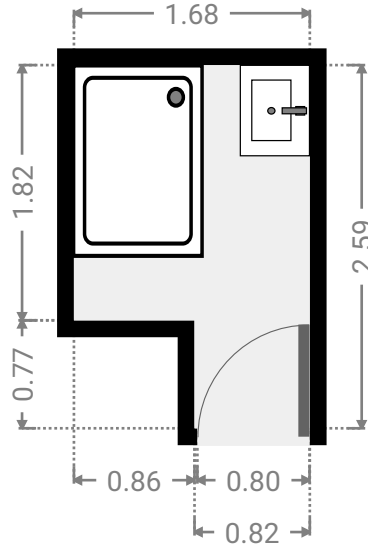
1

▼ Ground Floor



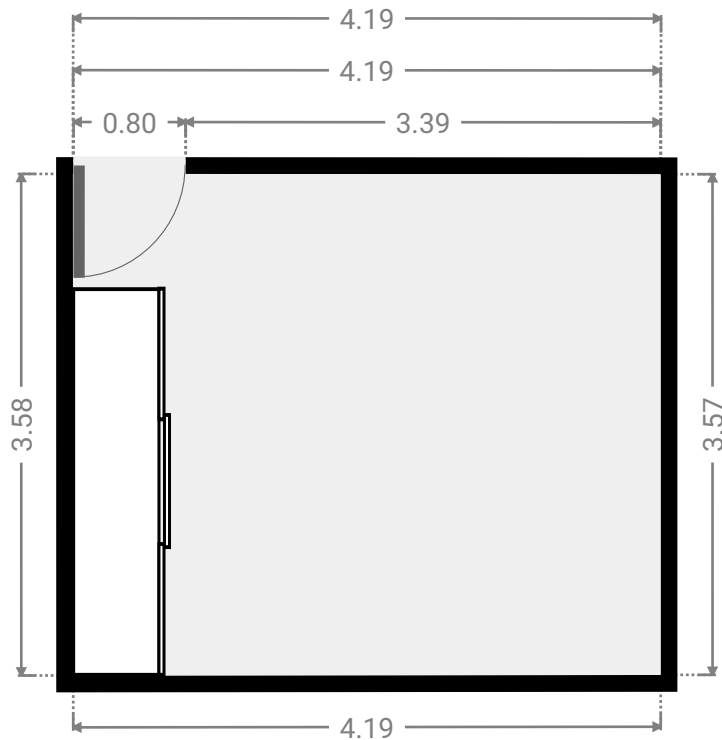
▼ **Bathroom**
Ground Floor

WIDTH: 1.68 m • LENGTH: 2.59 m
AREA: 3.69 m² • PERIMETER: 8.54 m



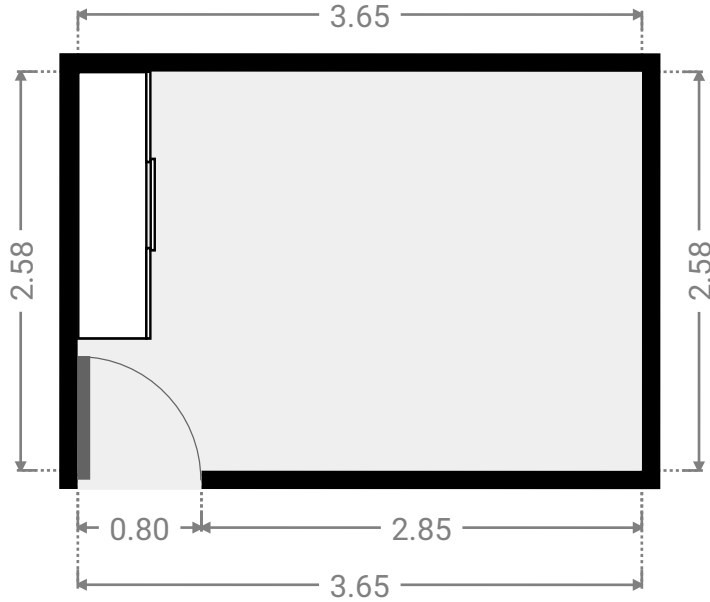
▼ **Bedroom**
Ground Floor

WIDTH: 4.19 m • LENGTH: 3.58 m
AREA: 14.97 m² • PERIMETER: 15.53 m



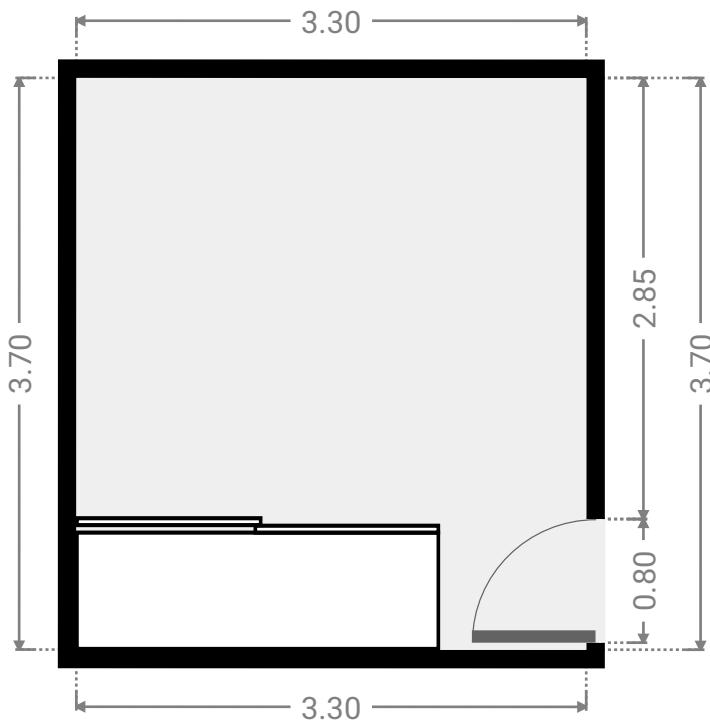
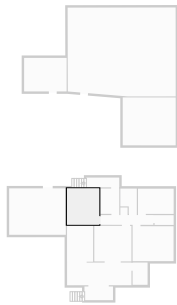
▼ Bedroom
Ground Floor

WIDTH: 3.65 m • LENGTH: 2.58 m
AREA: 9.42 m² • PERIMETER: 12.46 m



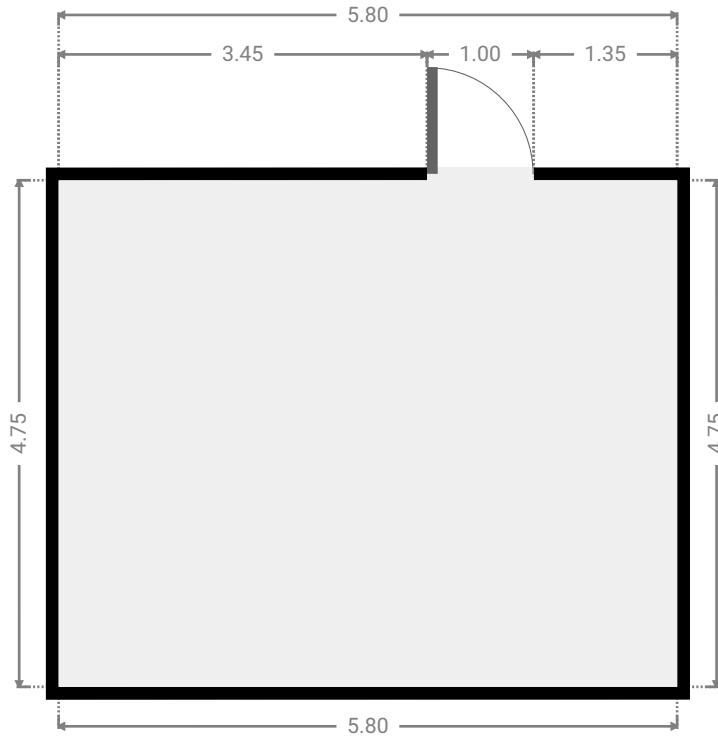
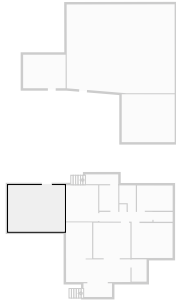
▼ Bedroom
Ground Floor

WIDTH: 3.30 m • LENGTH: 3.70 m
AREA: 12.21 m² • PERIMETER: 14.00 m



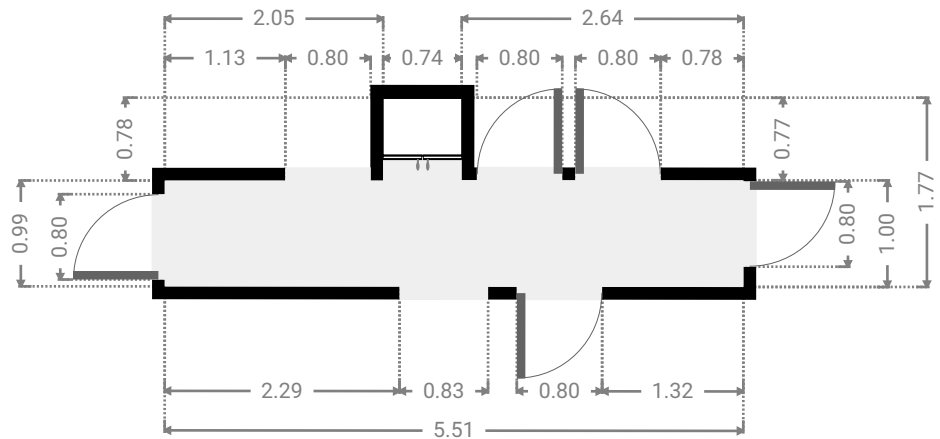
▼ Garage
Ground Floor

WIDTH: 5.80 m • LENGTH: 4.75 m
AREA: 27.55 m² • PERIMETER: 21.10 m



▼ Hall
Ground Floor

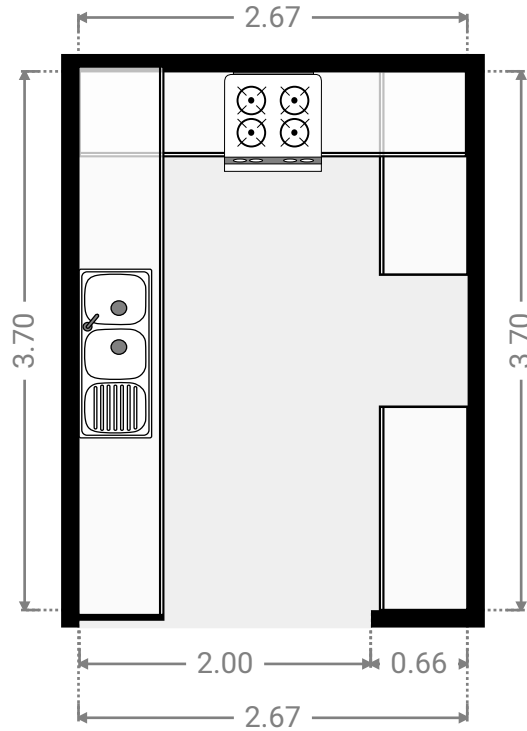
WIDTH: 5.43 m • LENGTH: 1.77 m
AREA: 5.98 m² • PERIMETER: 14.40 m



FLOORS: 1

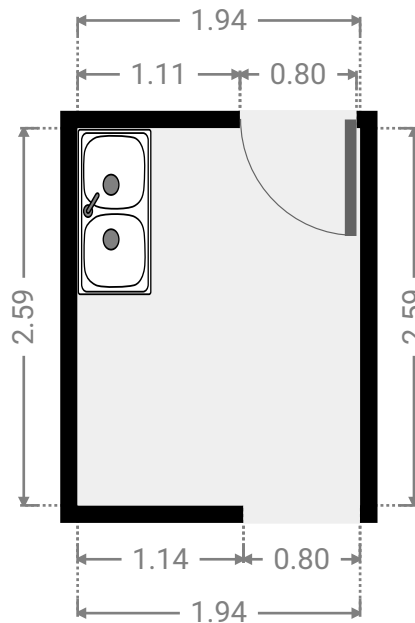
▼ Kitchen
Ground Floor

WIDTH: 2.67 m • LENGTH: 3.70 m
AREA: 9.88 m² • PERIMETER: 12.74 m



▼ Laundry Room
Ground Floor

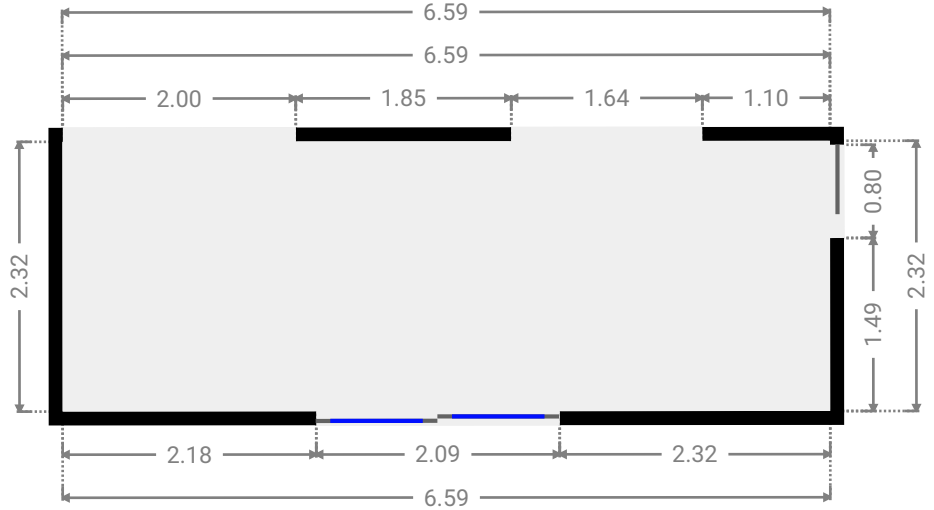
WIDTH: 1.94 m • LENGTH: 2.59 m
AREA: 5.02 m² • PERIMETER: 9.06 m



FLOORS: 1

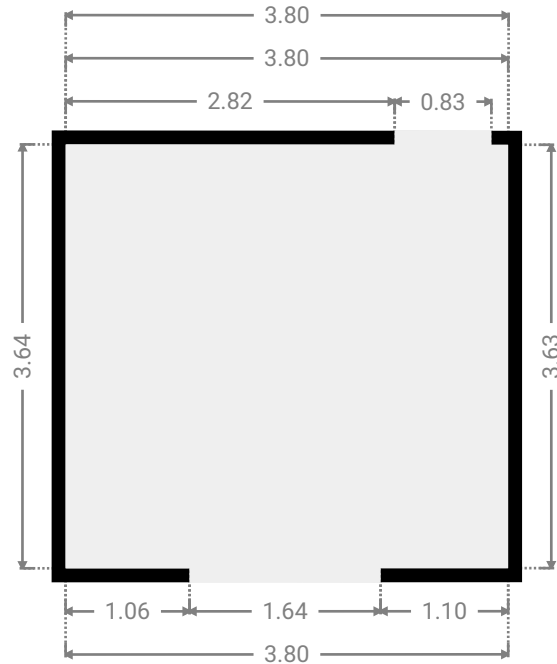
▼ Living Room
Ground Floor

WIDTH: 6.59 m • LENGTH: 2.32 m
AREA: 15.27 m² • PERIMETER: 17.82 m



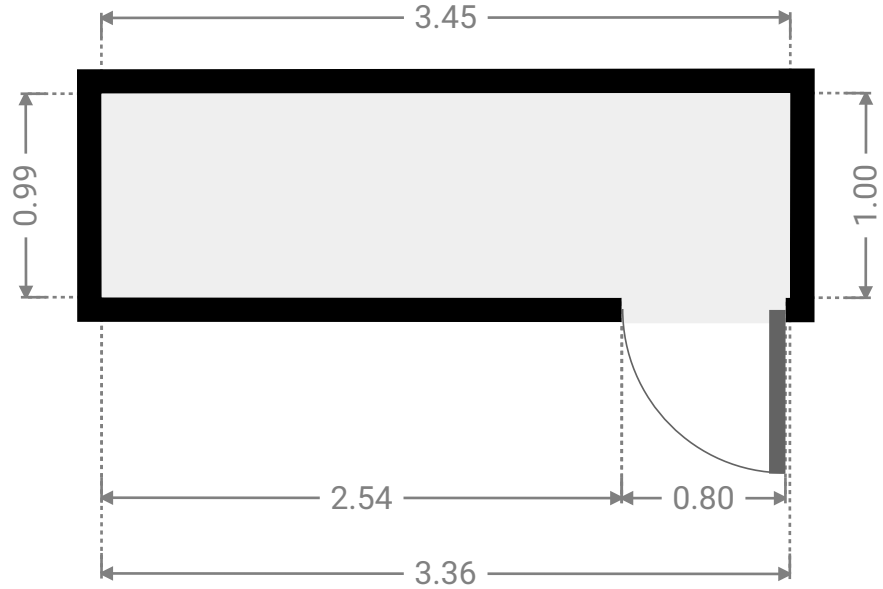
▼ Living Room
Ground Floor

WIDTH: 3.80 m • LENGTH: 3.64 m
AREA: 13.82 m² • PERIMETER: 14.87 m



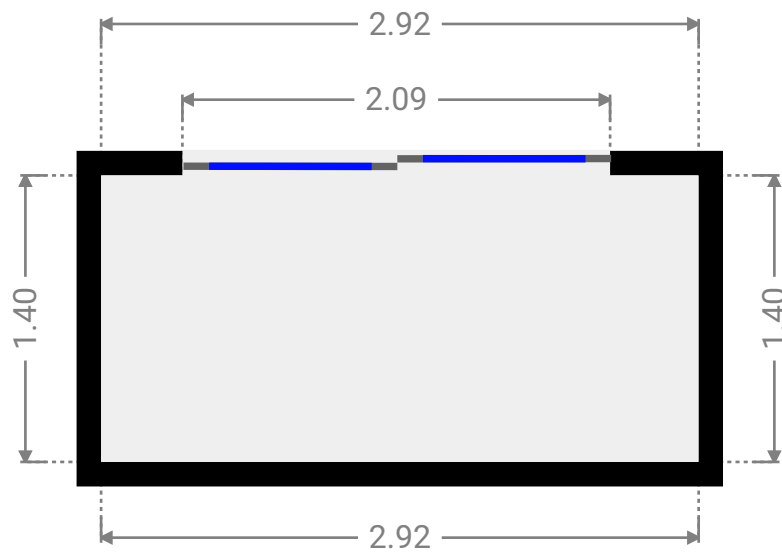
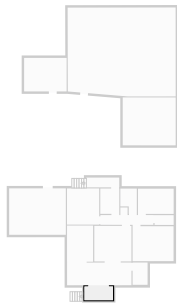
▼ Other
Ground Floor

WIDTH: 3.37 m • LENGTH: 1.00 m
AREA: 3.36 m² • PERIMETER: 8.72 m



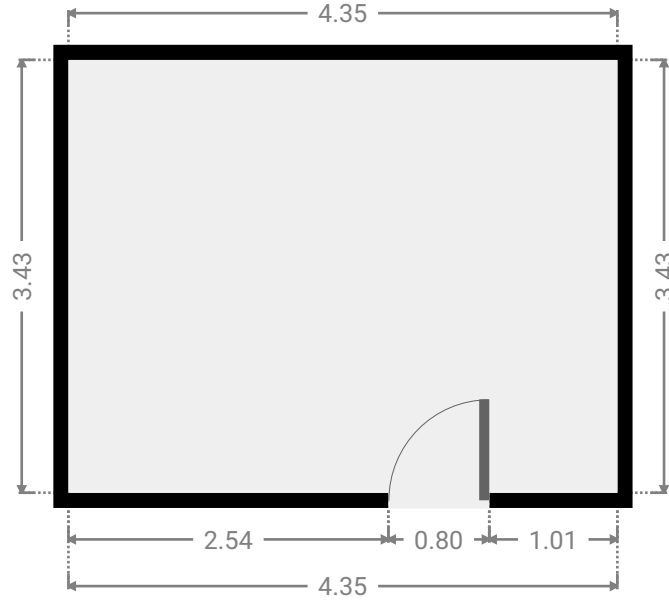
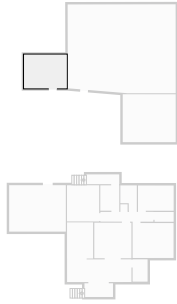
▼ Other
Ground Floor

WIDTH: 2.92 m • LENGTH: 1.40 m
AREA: 4.09 m² • PERIMETER: 8.64 m



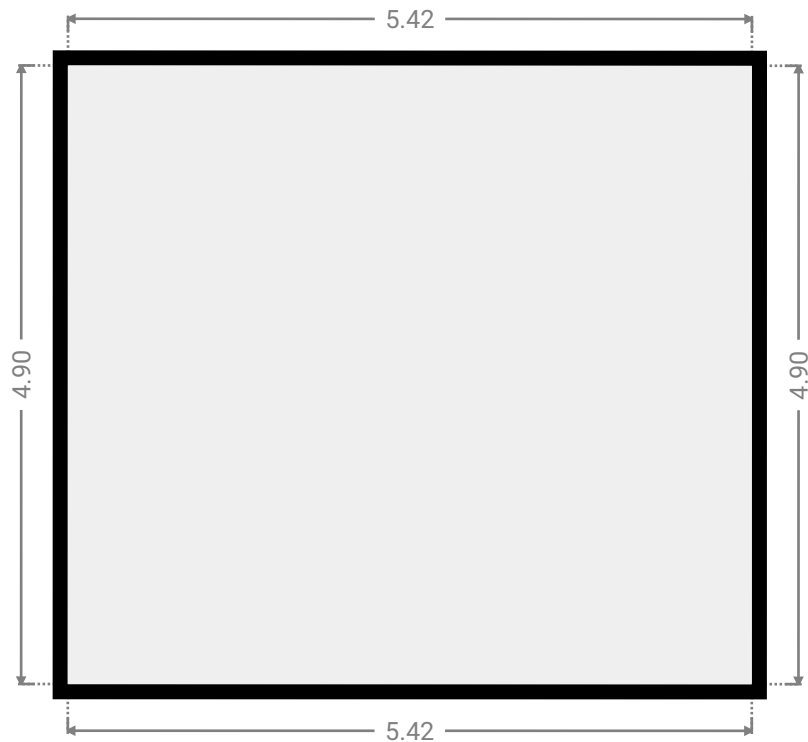
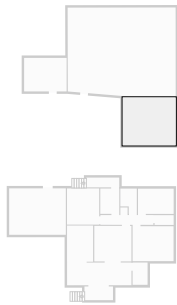
▼ Other
Ground Floor

WIDTH: 4.35 m • LENGTH: 3.43 m
AREA: 14.92 m² • PERIMETER: 15.56 m



▼ Other
Ground Floor

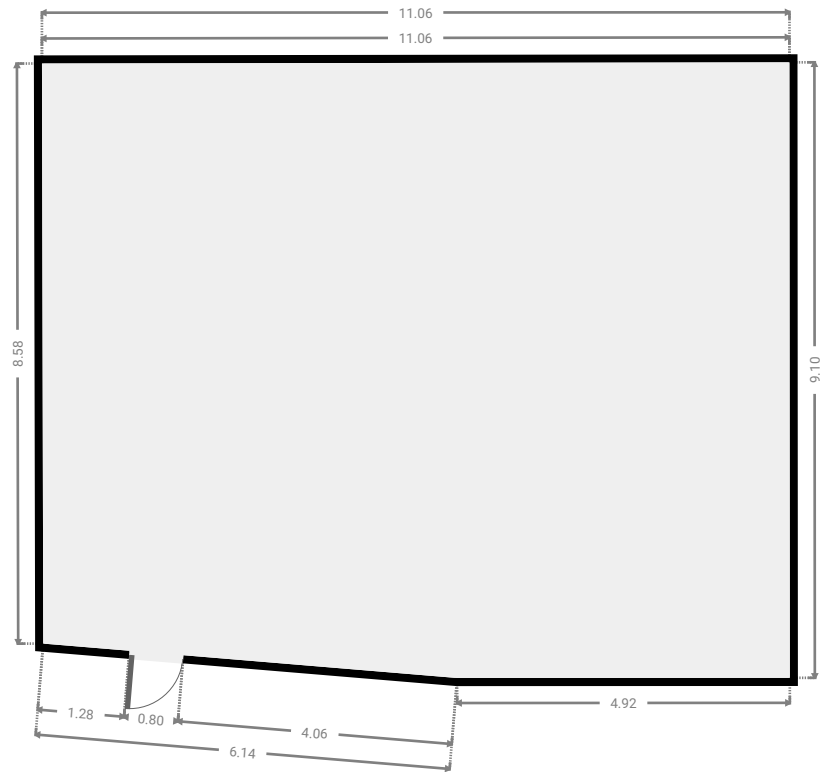
WIDTH: 5.42 m • LENGTH: 4.90 m
AREA: 26.56 m² • PERIMETER: 20.64 m



FLOORS: 1

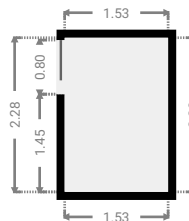
▼ **Other**
Ground Floor

WIDTH: 11.06 m • LENGTH: 9.10 m
AREA: 98.96 m² • PERIMETER: 39.81 m



▼ **Study**
Ground Floor

WIDTH: 1.53 m • LENGTH: 2.28 m
AREA: 3.49 m² • PERIMETER: 7.62 m



▼ Toilet
Ground Floor

WIDTH: 1.95 m • LENGTH: 1.00 m
AREA: 1.95 m² • PERIMETER: 5.91 m

