

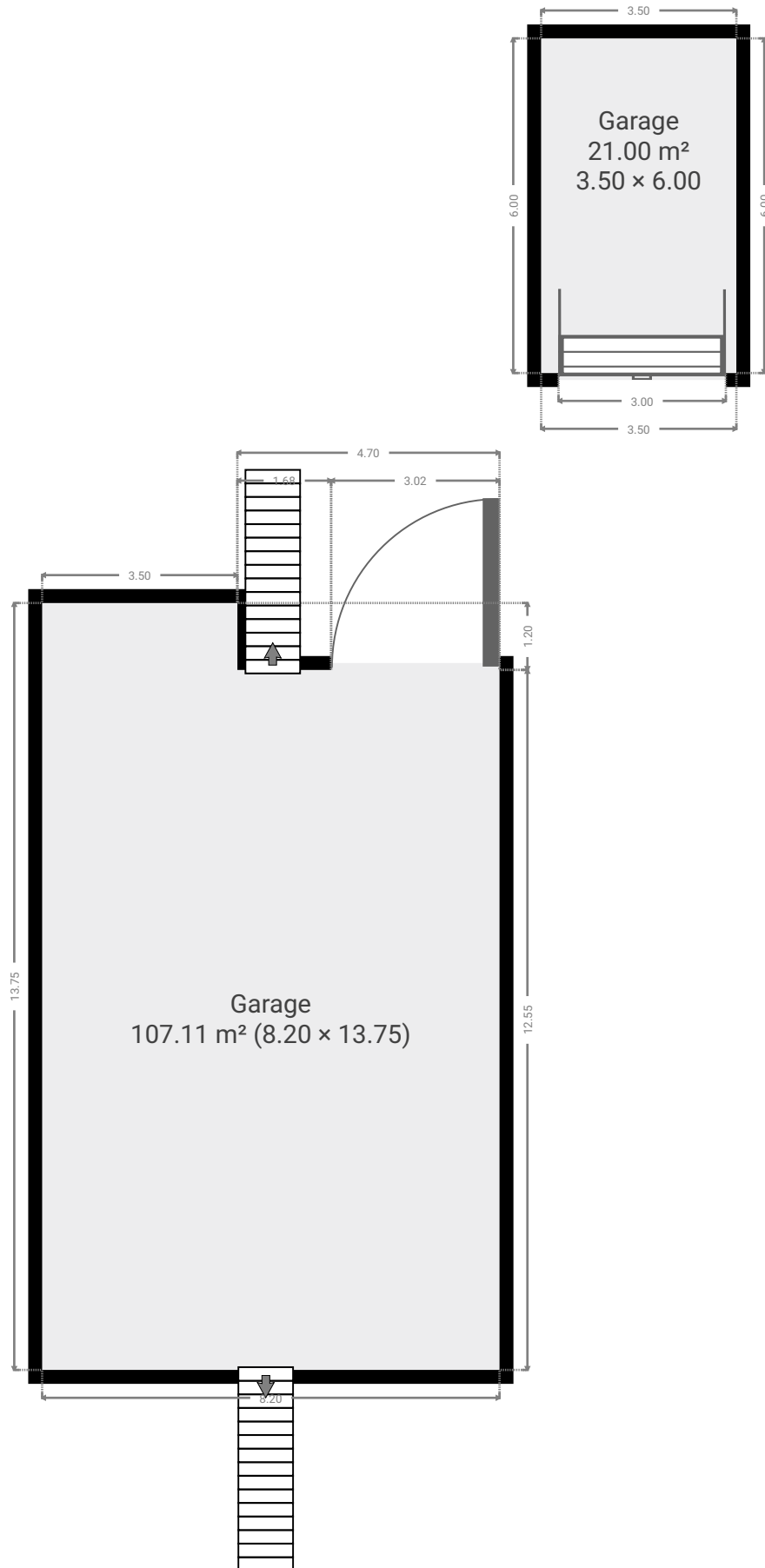
65 KENT Street

SUBMITTED BY
Ray White Rockhampton Casey
stockers@cqoz.com

CREATED ON
2022-07-22

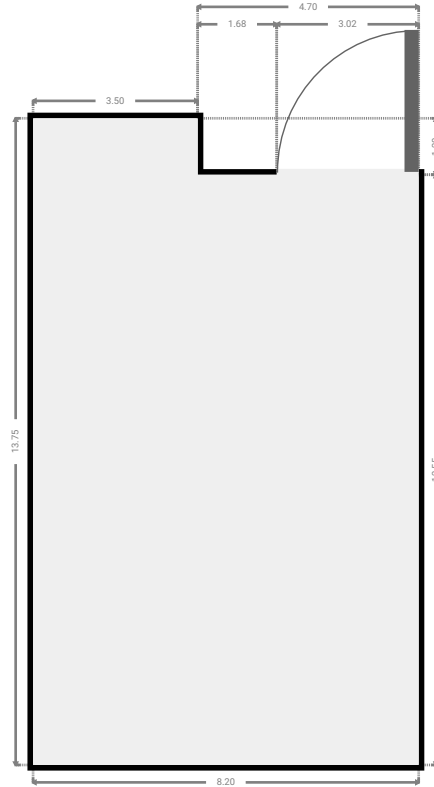
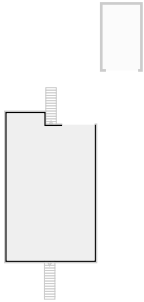
Floors
2

▼ Ground Floor



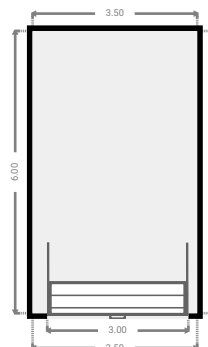
▼ **Garage**
Ground Floor

WIDTH: 8.20 m • LENGTH: 13.75 m
AREA: 107.11 m² • PERIMETER: 43.90 m

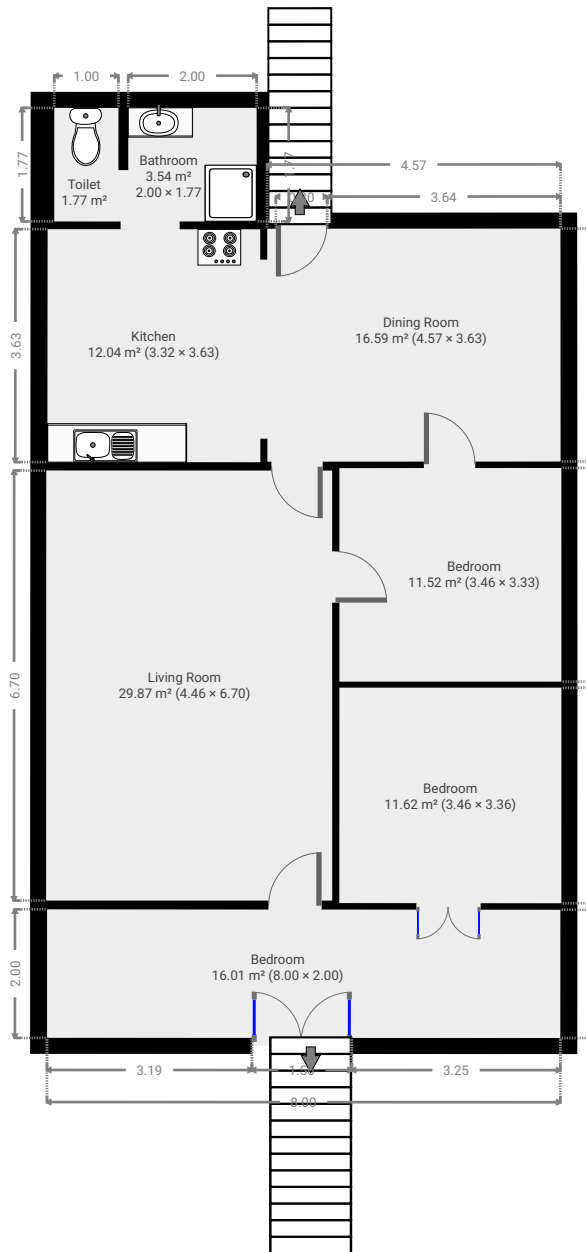


▼ **Garage**
Ground Floor

WIDTH: 3.50 m • LENGTH: 6.00 m
AREA: 21.00 m² • PERIMETER: 19.00 m

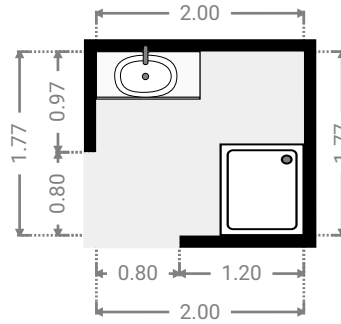
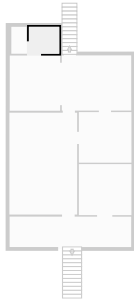


▼ 1st Floor



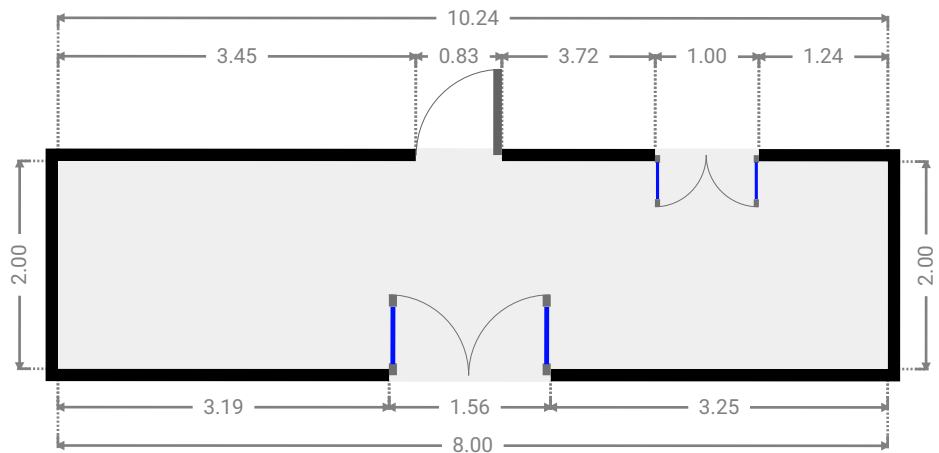
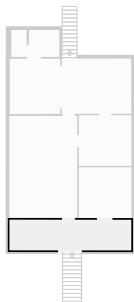
▼ **Bathroom**
1st Floor

WIDTH: 2.00 m • LENGTH: 1.77 m
AREA: 3.54 m² • PERIMETER: 7.54 m



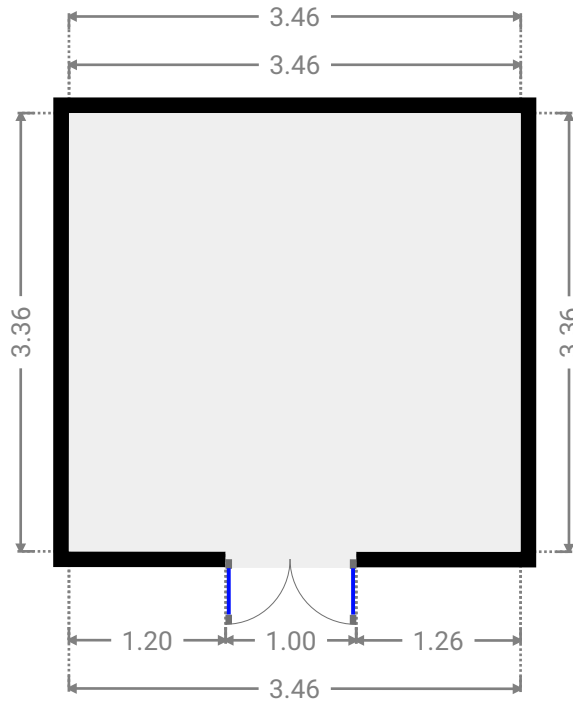
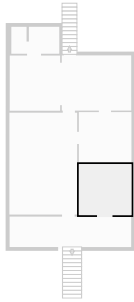
▼ **Bedroom**
1st Floor

WIDTH: 8.00 m • LENGTH: 2.00 m
AREA: 16.01 m² • PERIMETER: 20.00 m



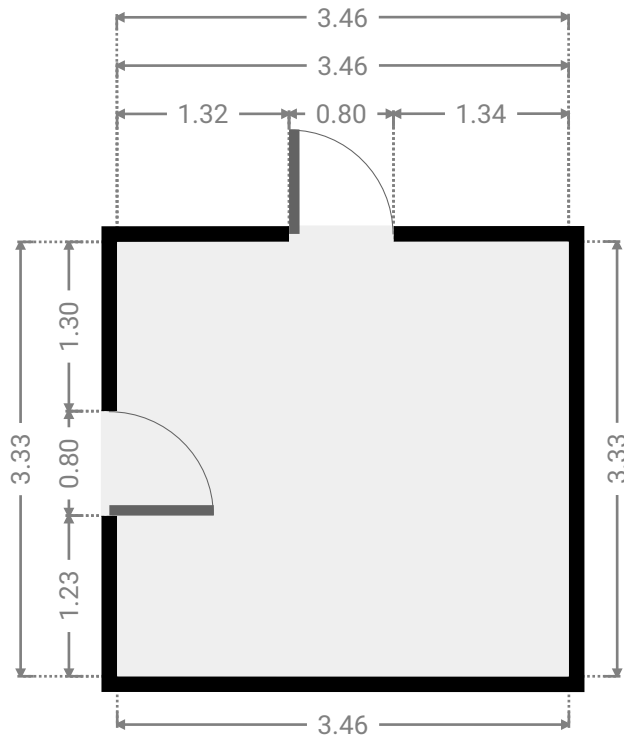
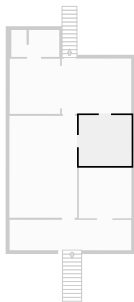
▼ Bedroom
1st Floor

WIDTH: 3.46 m • LENGTH: 3.36 m
AREA: 11.62 m² • PERIMETER: 13.64 m



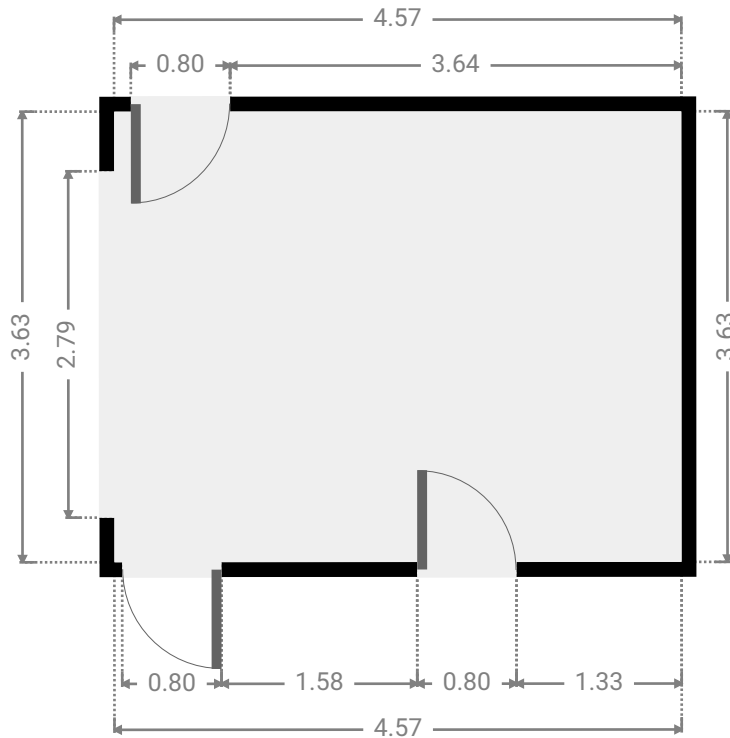
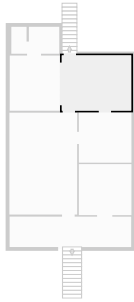
▼ Bedroom
1st Floor

WIDTH: 3.46 m • LENGTH: 3.33 m
AREA: 11.52 m² • PERIMETER: 13.58 m



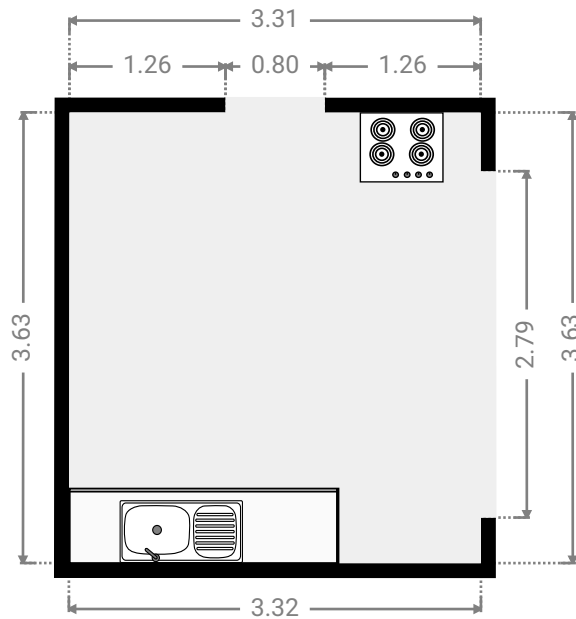
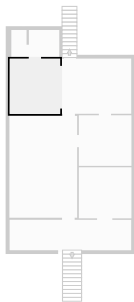
▼ **Dining Room**
1st Floor

WIDTH: 4.57 m • LENGTH: 3.63 m
AREA: 16.59 m² • PERIMETER: 16.40 m



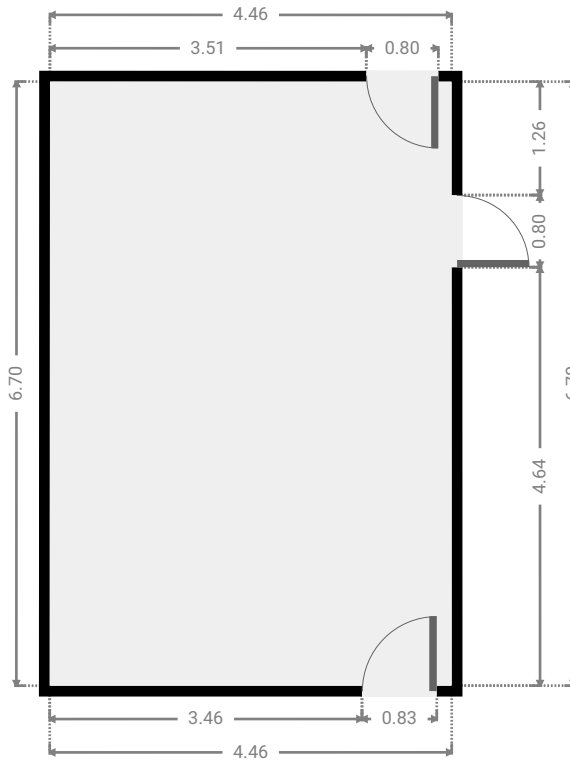
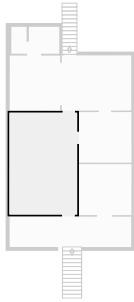
▼ **Kitchen**
1st Floor

WIDTH: 3.32 m • LENGTH: 3.63 m
AREA: 12.04 m² • PERIMETER: 13.89 m



▼ **Living Room**
1st Floor

WIDTH: 4.46 m • LENGTH: 6.70 m
AREA: 29.87 m² • PERIMETER: 22.32 m



▼ **Toilet**
1st Floor

WIDTH: 1.00 m • LENGTH: 1.77 m
AREA: 1.77 m² • PERIMETER: 5.54 m

