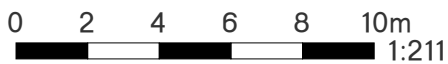
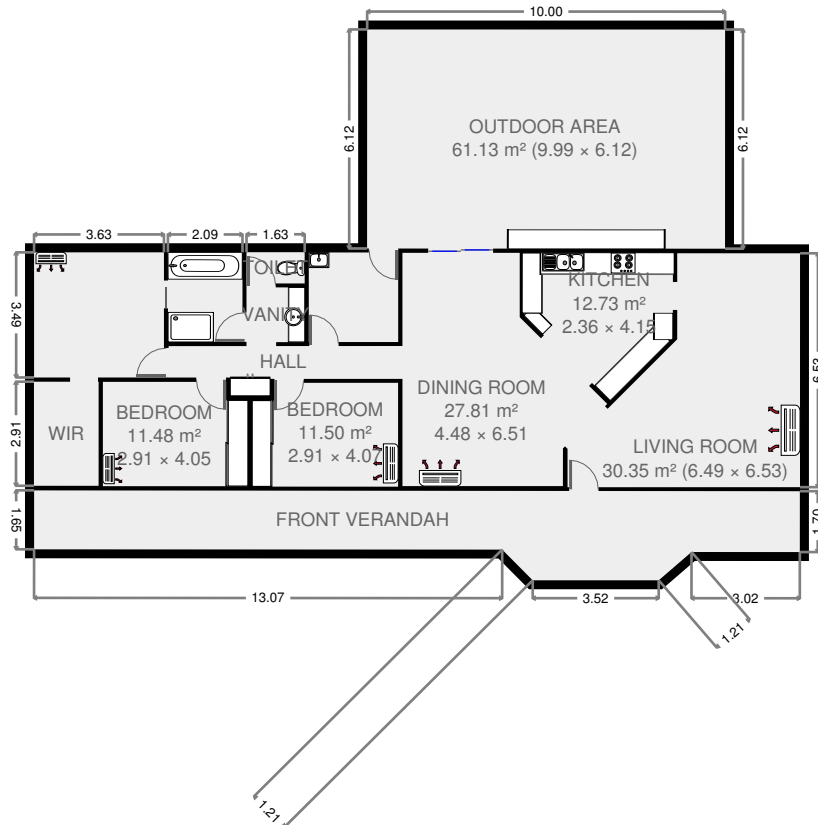
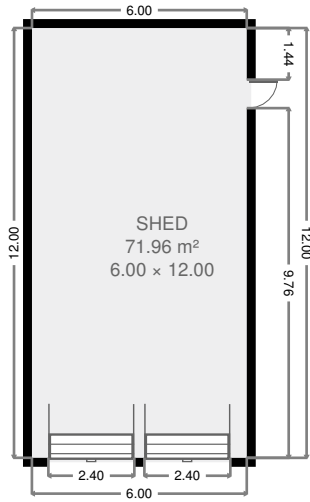


Ground Floor

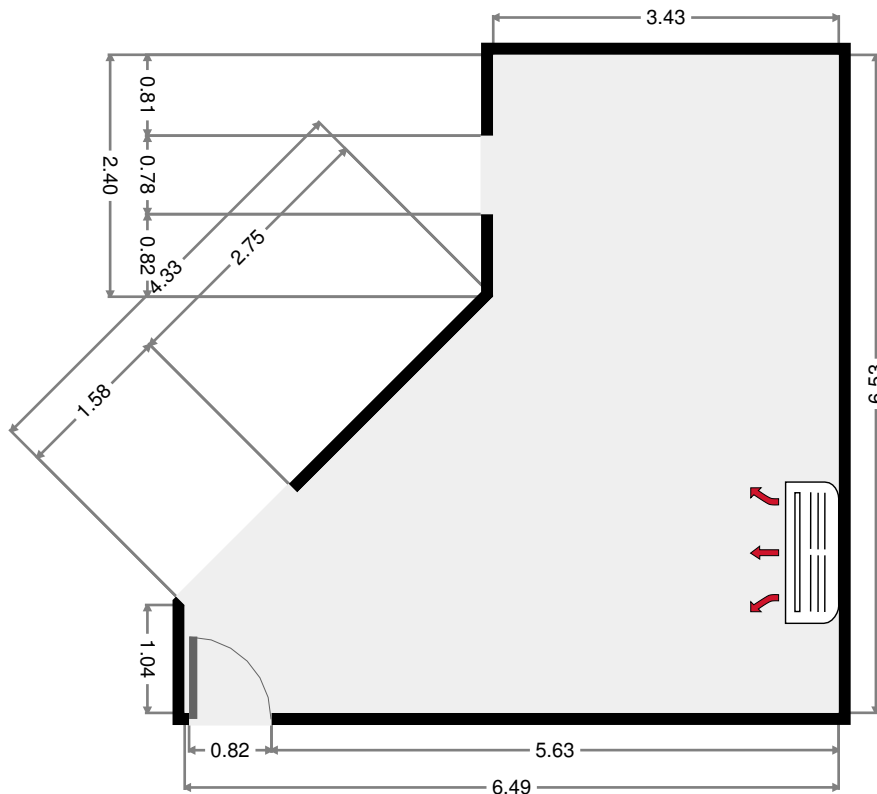


64 Neilsen Avenue

THIS FLOORPLAN IS PROVIDED WITHOUT WARRANTY OF ANY KIND. SENSOPRIA DISCLAIMS ANY WARRANTY INCLUDING, WITHOUT LIMITATION, SATISFACTORY QUALITY OR ACCURACY OF DIMENSIONS.

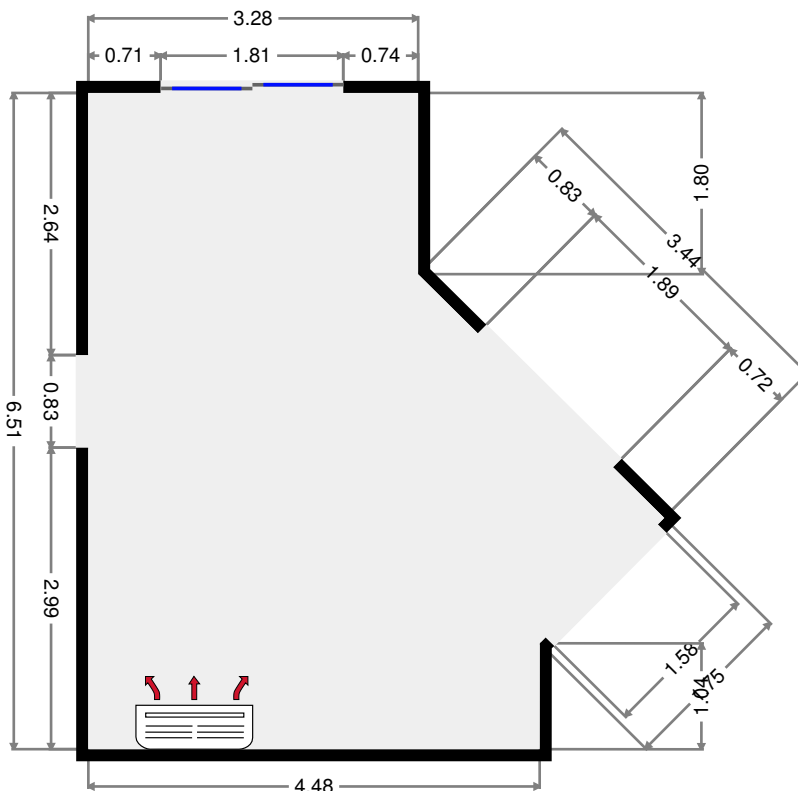
Living Room

Width: 6.49 m
 Length: 6.53 m
 Area: 30.35 m²
 Perimeter: 24.25 m
 Ceiling Height: 2.17 m



Dining Room

Width: 4.48 m
 Length: 6.51 m
 Area: 27.81 m²
 Perimeter: 22.31 m
 Ceiling Height: 2.17 m



THIS FLOORPLAN IS PROVIDED WITHOUT WARRANTY OF ANY KIND. SENSOPIA DISCLAIMS ANY WARRANTY INCLUDING, WITHOUT LIMITATION, SATISFACTORY QUALITY OR ACCURACY OF DIMENSIONS.

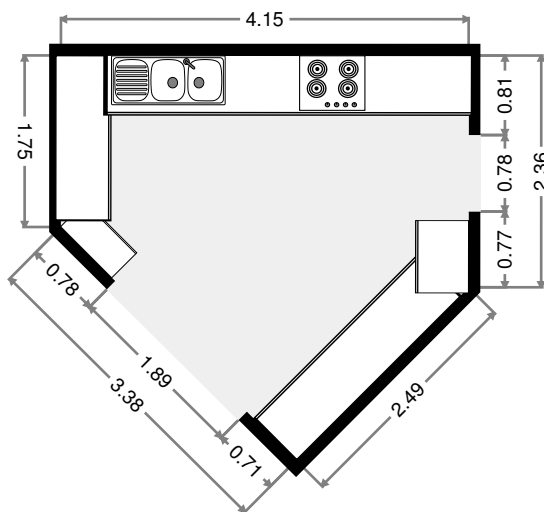
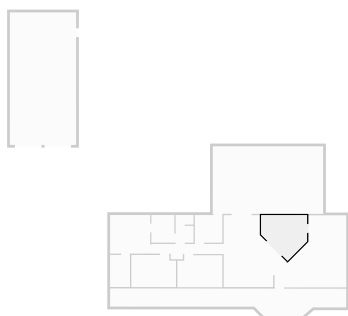


64 Neilsen Avenue

2017-03-10

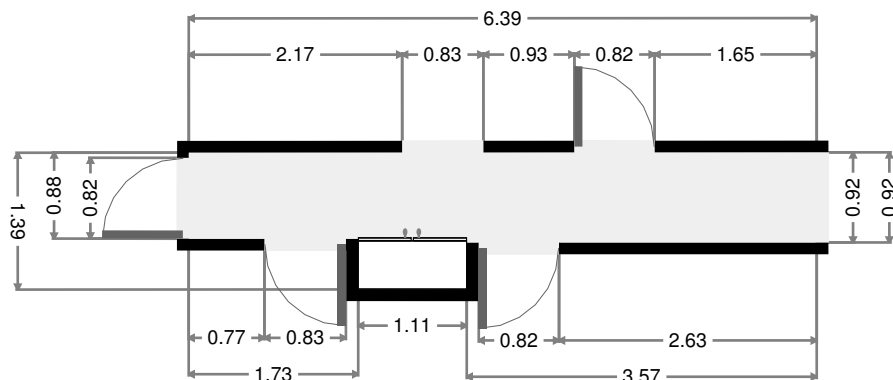
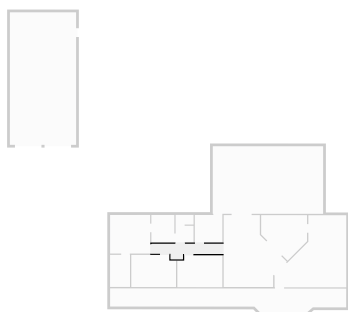
Kitchen

Width: 2.36 m
 Length: 4.15 m
 Area: 12.73 m²
 Perimeter: 14.13 m



Hall

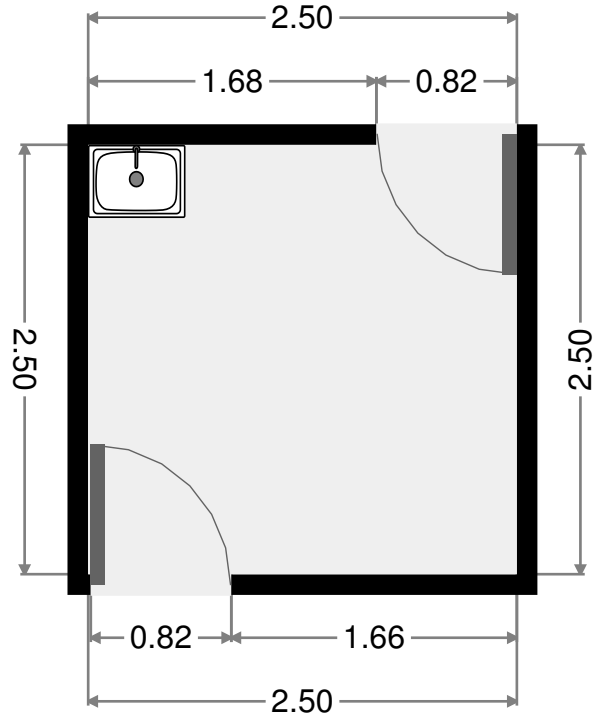
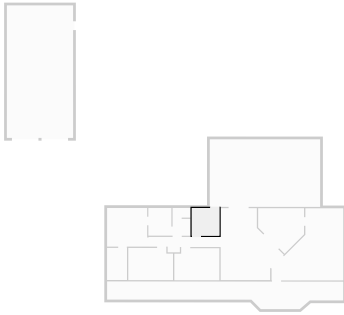
Width: 1.39 m
 Length: 6.39 m
 Area: 6.33 m²
 Perimeter: 15.59 m



THIS FLOORPLAN IS PROVIDED WITHOUT WARRANTY OF ANY KIND. SENSOPIA DISCLAIMS ANY WARRANTY INCLUDING, WITHOUT LIMITATION, SATISFACTORY QUALITY OR ACCURACY OF DIMENSIONS.

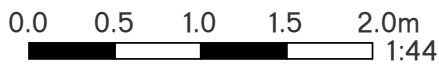
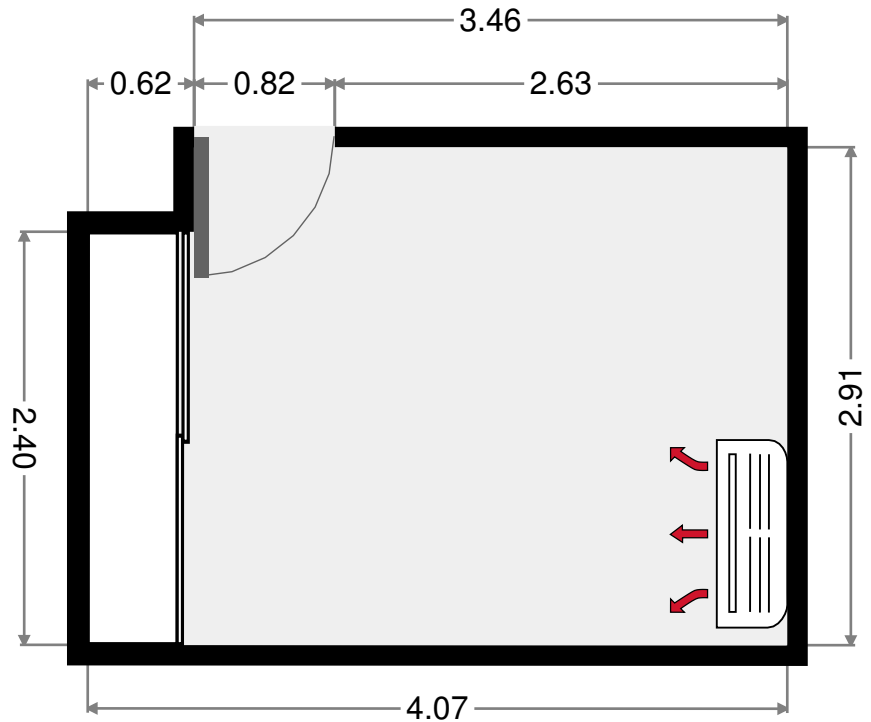
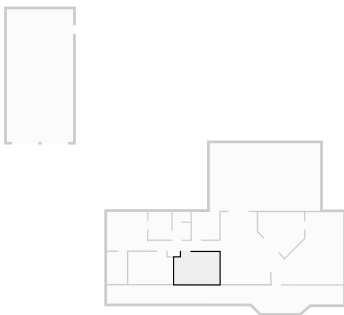
Laundry Room

Width: 2.50 m
 Length: 2.50 m
 Area: 6.24 m²
 Perimeter: 9.99 m



Bedroom

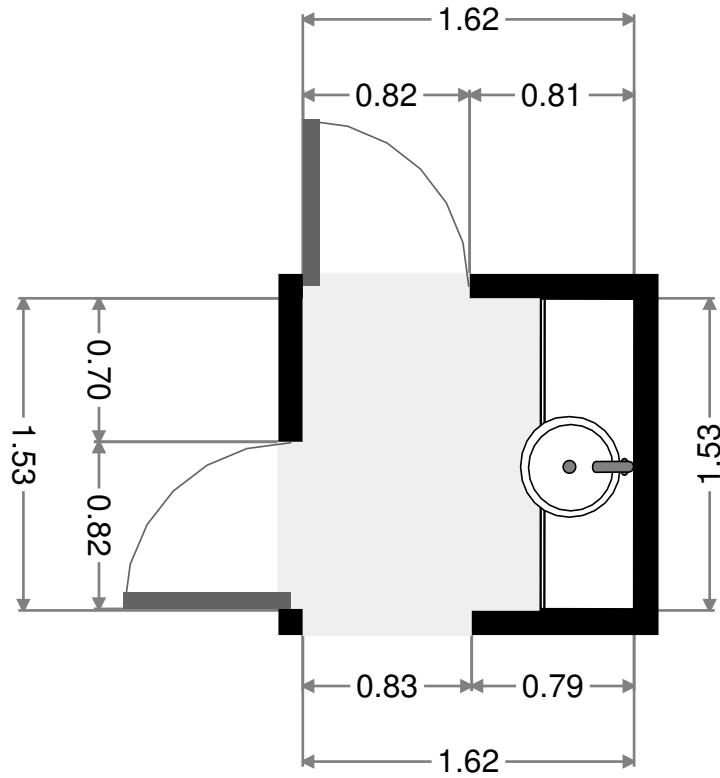
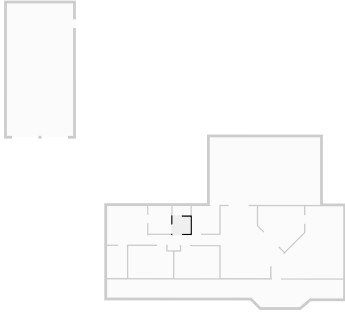
Width: 2.91 m
 Length: 4.07 m
 Area: 11.50 m²
 Perimeter: 13.94 m



THIS FLOORPLAN IS PROVIDED WITHOUT WARRANTY OF ANY KIND. SENSOPIA DISCLAIMS ANY WARRANTY INCLUDING, WITHOUT LIMITATION, SATISFACTORY QUALITY OR ACCURACY OF DIMENSIONS.

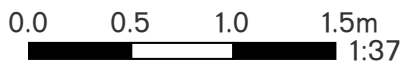
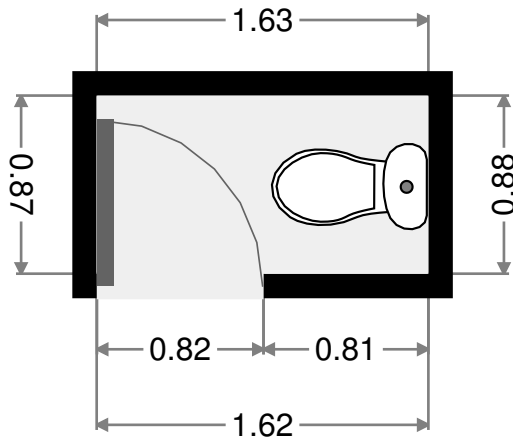
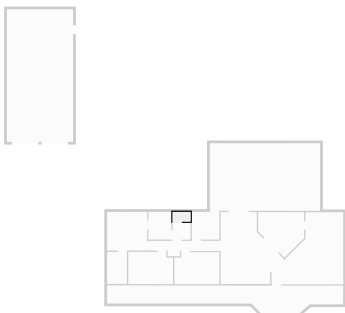
Vanity

Width: 1.53 m
 Length: 1.62 m
 Area: 2.48 m²
 Perimeter: 6.30 m



Toilet

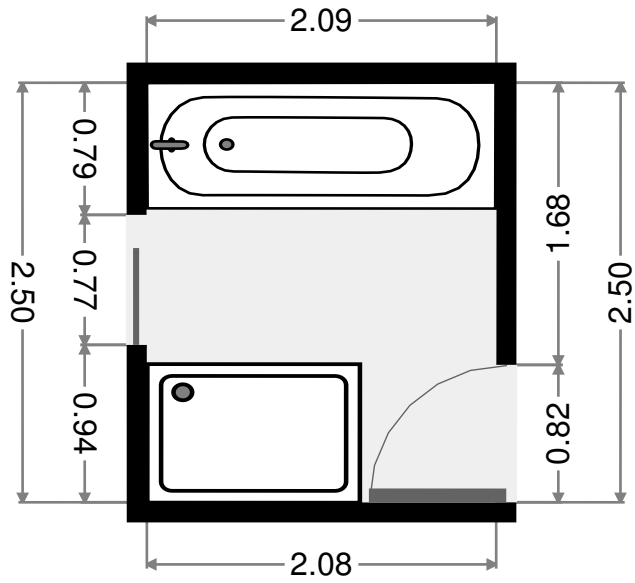
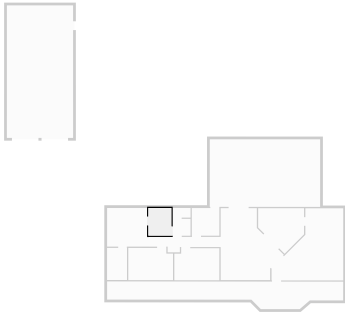
Width: 0.87 m
 Length: 1.63 m
 Area: 1.42 m²
 Perimeter: 4.99 m



THIS FLOORPLAN IS PROVIDED WITHOUT WARRANTY OF ANY KIND. SENSOPIA DISCLAIMS ANY WARRANTY INCLUDING, WITHOUT LIMITATION, SATISFACTORY QUALITY OR ACCURACY OF DIMENSIONS.

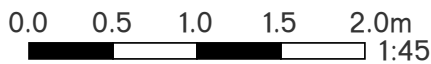
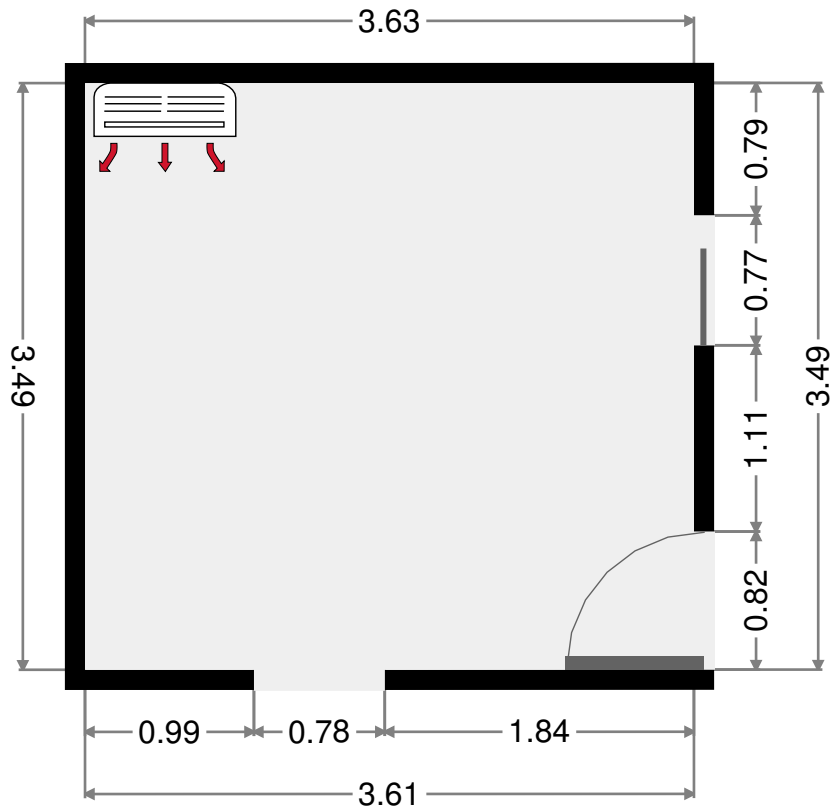
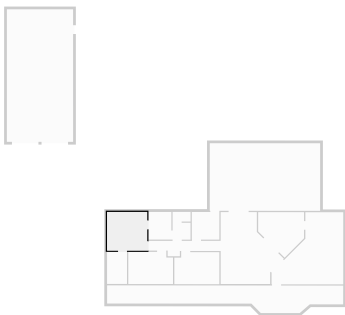
Bathroom

Width: 2.09 m
 Length: 2.50 m
 Area: 5.20 m²
 Perimeter: 9.16 m



Master Bedroom

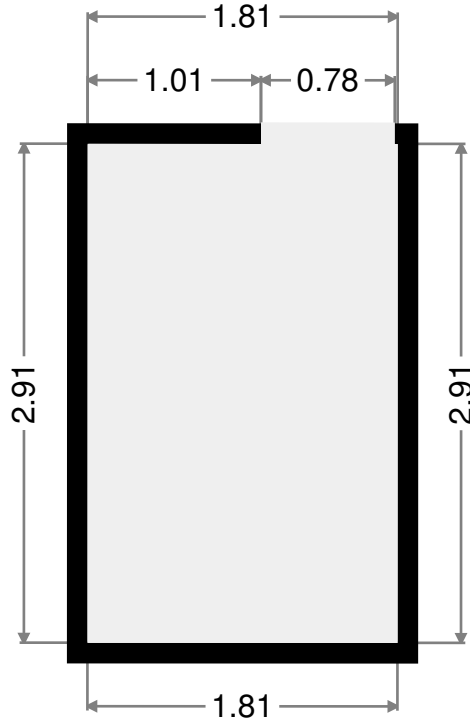
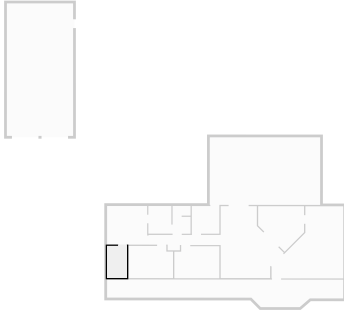
Width: 3.49 m
 Length: 3.63 m
 Area: 12.67 m²
 Perimeter: 14.24 m



THIS FLOORPLAN IS PROVIDED WITHOUT WARRANTY OF ANY KIND. SENSOPIA DISCLAIMS ANY WARRANTY INCLUDING, WITHOUT LIMITATION, SATISFACTORY QUALITY OR ACCURACY OF DIMENSIONS.

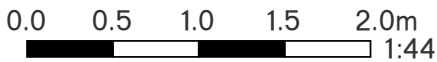
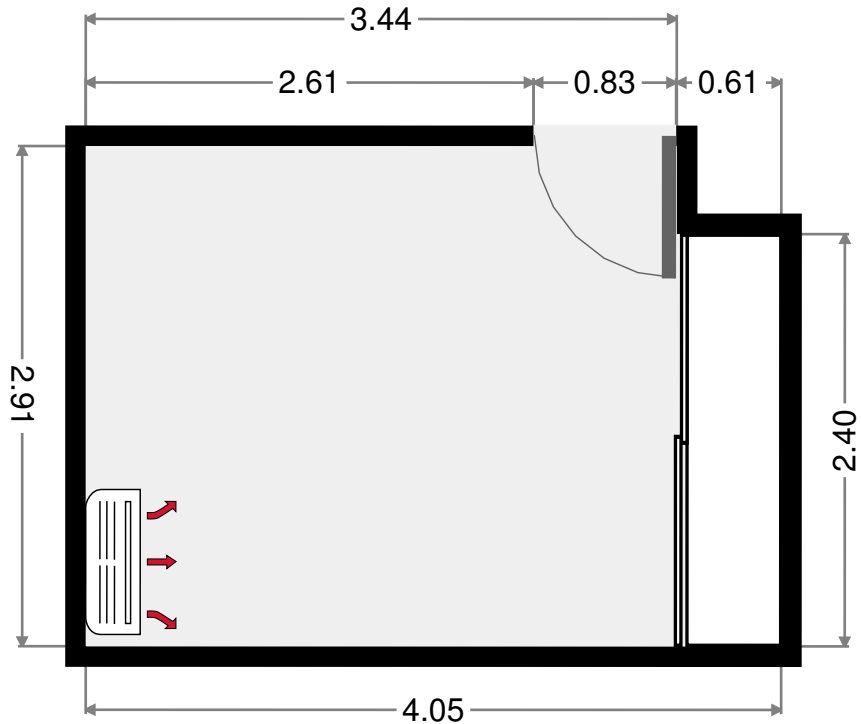
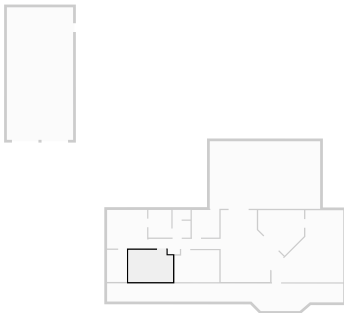
WIR

Width: 1.81 m
 Length: 2.91 m
 Area: 5.24 m²
 Perimeter: 9.42 m



Bedroom

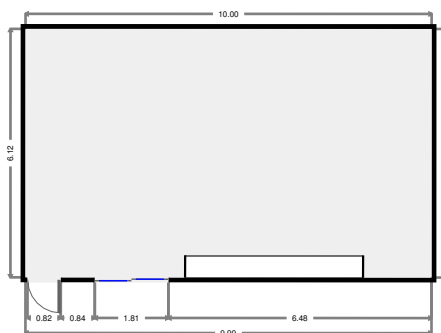
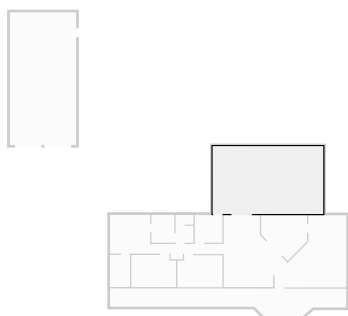
Width: 2.91 m
 Length: 4.05 m
 Area: 11.48 m²
 Perimeter: 13.92 m



THIS FLOORPLAN IS PROVIDED WITHOUT WARRANTY OF ANY KIND. SENSOPIA DISCLAIMS ANY WARRANTY INCLUDING, WITHOUT LIMITATION, SATISFACTORY QUALITY OR ACCURACY OF DIMENSIONS.

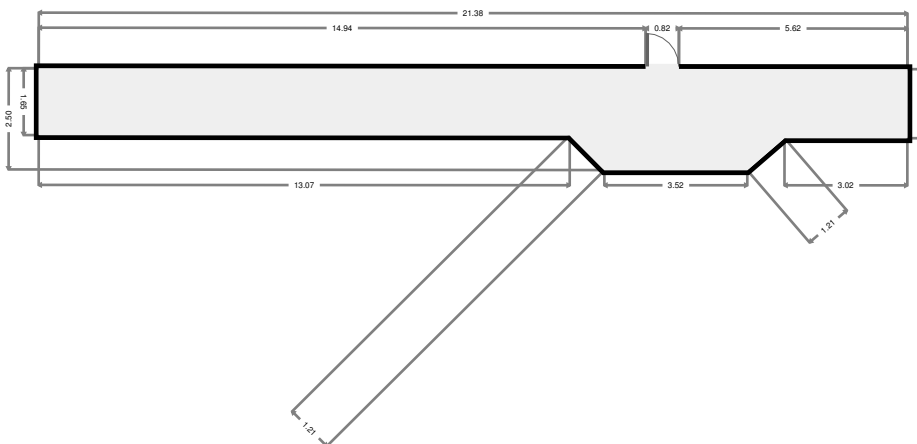
Outdoor Area

Width: 6.12 m
 Length: 9.99 m
 Area: 61.13 m²
 Perimeter: 32.22 m



Front Verandah

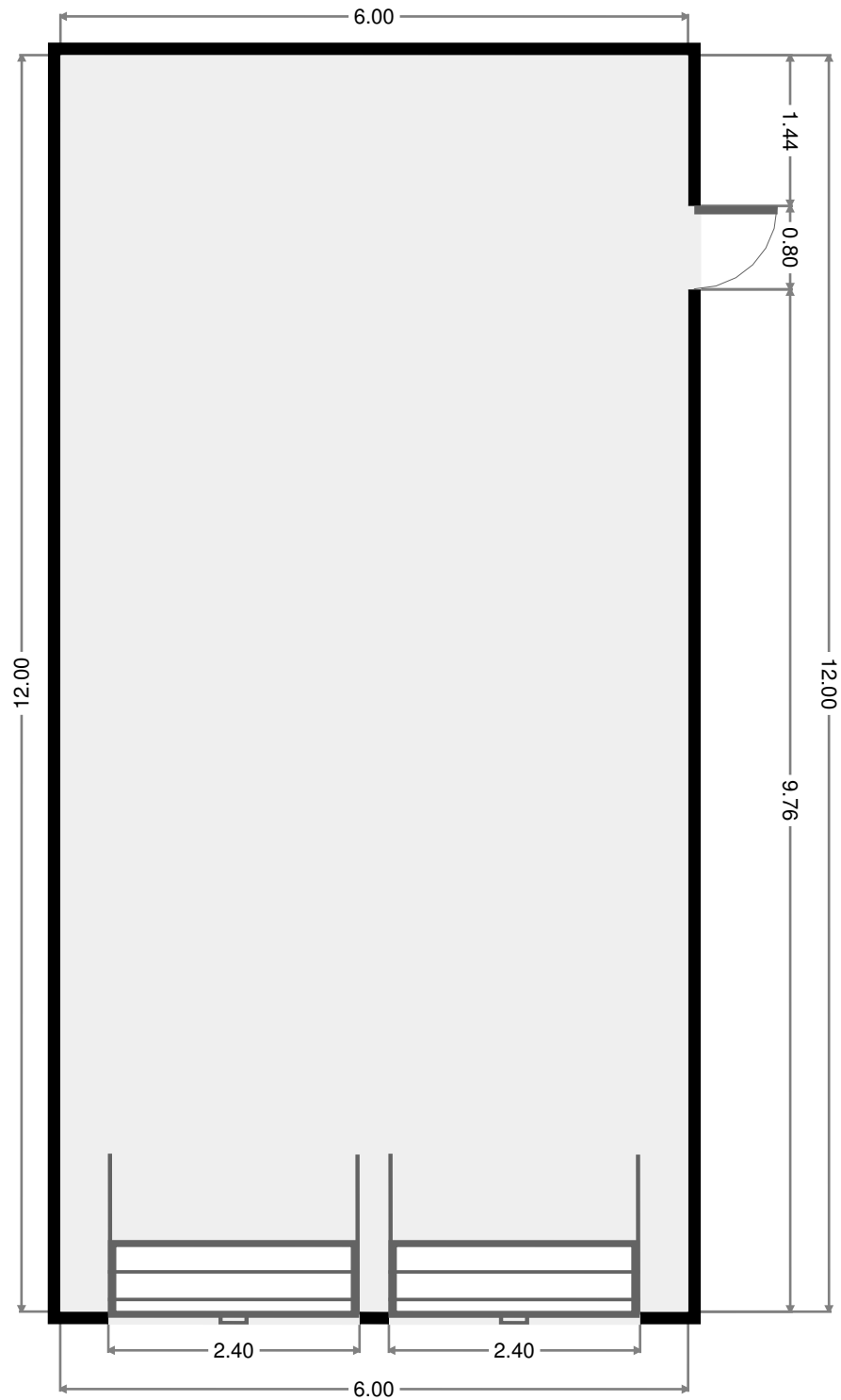
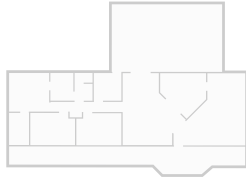
Width: 2.50 m
 Length: 21.38 m
 Area: 39.05 m²
 Perimeter: 46.76 m



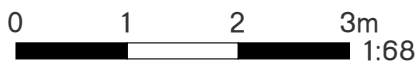
THIS FLOORPLAN IS PROVIDED WITHOUT WARRANTY OF ANY KIND. SENSOPIA DISCLAIMS ANY WARRANTY INCLUDING, WITHOUT LIMITATION, SATISFACTORY QUALITY OR ACCURACY OF DIMENSIONS.

Shed

Width: 6.00 m
Length: 12.00 m
Area: 71.96 m²
Perimeter: 35.99 m



THIS FLOORPLAN IS PROVIDED WITHOUT WARRANTY OF ANY KIND. SENSOPIA DISCLAIMS ANY WARRANTY INCLUDING, WITHOUT LIMITATION, SATISFACTORY QUALITY OR ACCURACY OF DIMENSIONS.



64 Neilsen Avenue

2017-03-10