

63 Woodville STREET

SUBMITTED BY

Ray White Rockhampton Casey
stockers@cqoz.com

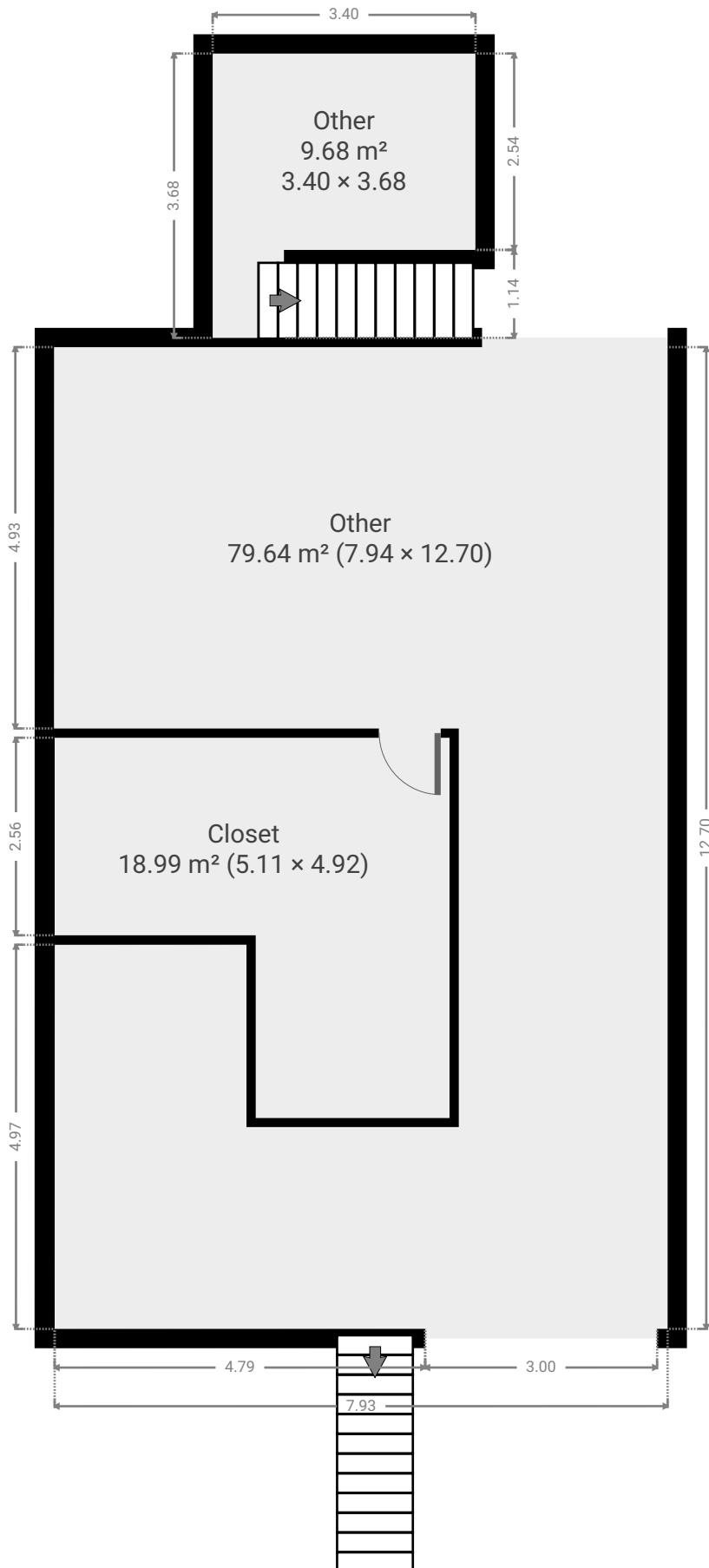
CREATED ON

2022-08-09

Floors

2

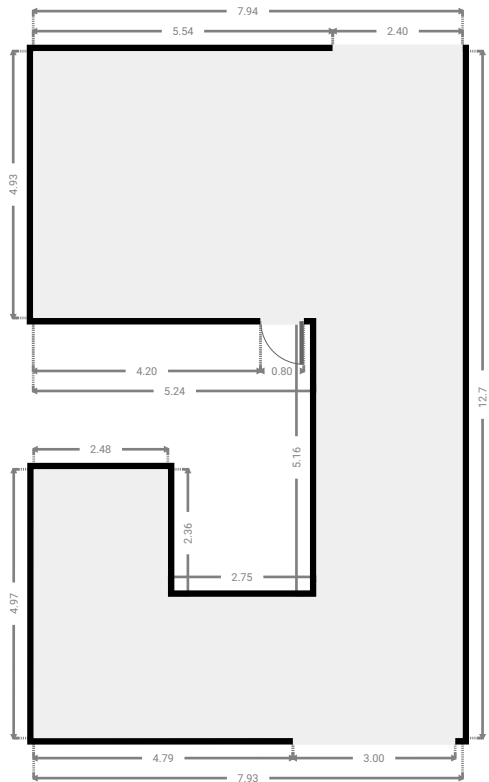
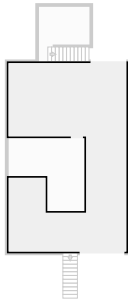
▼ Ground Floor



FLOORS: 2

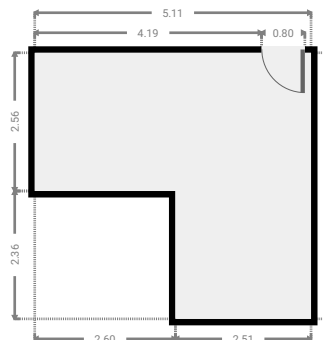
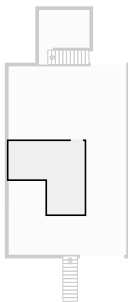
▼ Other
Ground Floor

WIDTH: 7.94 m • LENGTH: 12.70 m
AREA: 79.64 m² • PERIMETER: 56.45 m



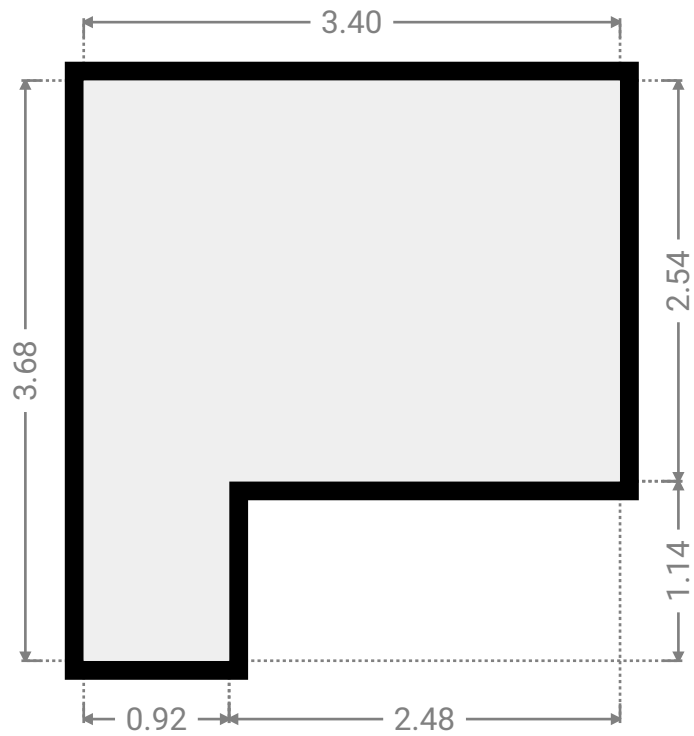
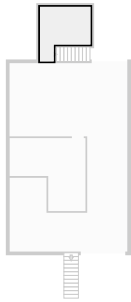
▼ Closet
Ground Floor

WIDTH: 5.11 m • LENGTH: 4.92 m
AREA: 18.99 m² • PERIMETER: 20.06 m

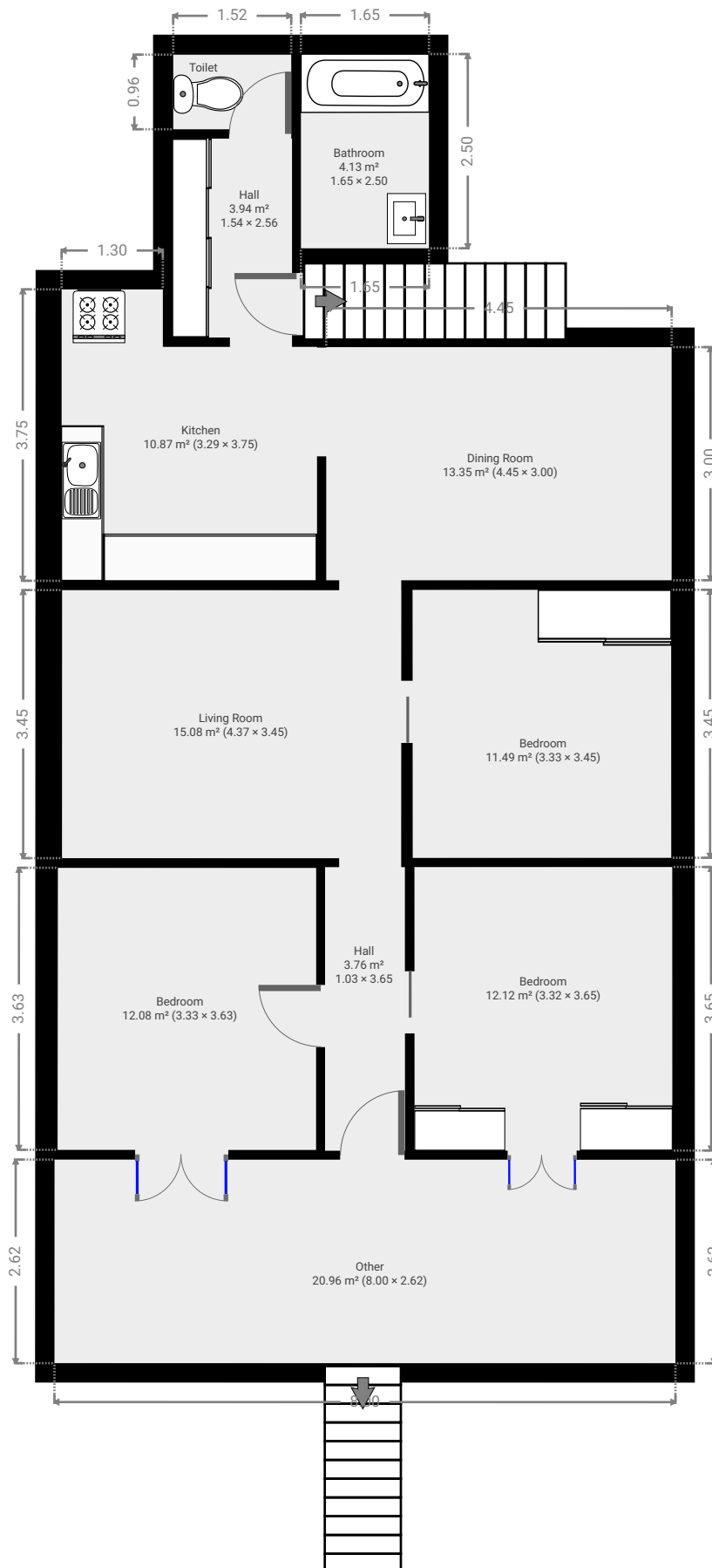


▼ Other
Ground Floor

WIDTH: 3.40 m • LENGTH: 3.68 m
AREA: 9.68 m² • PERIMETER: 14.16 m

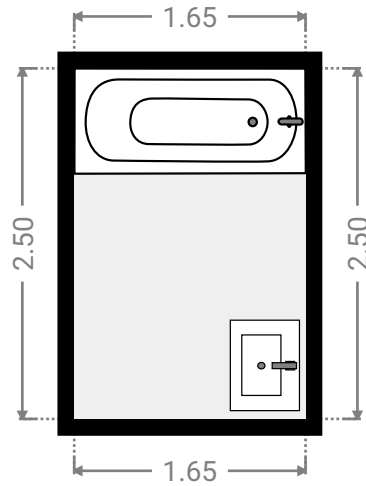
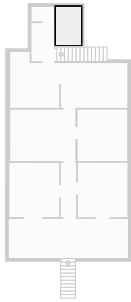


▼ 1st Floor



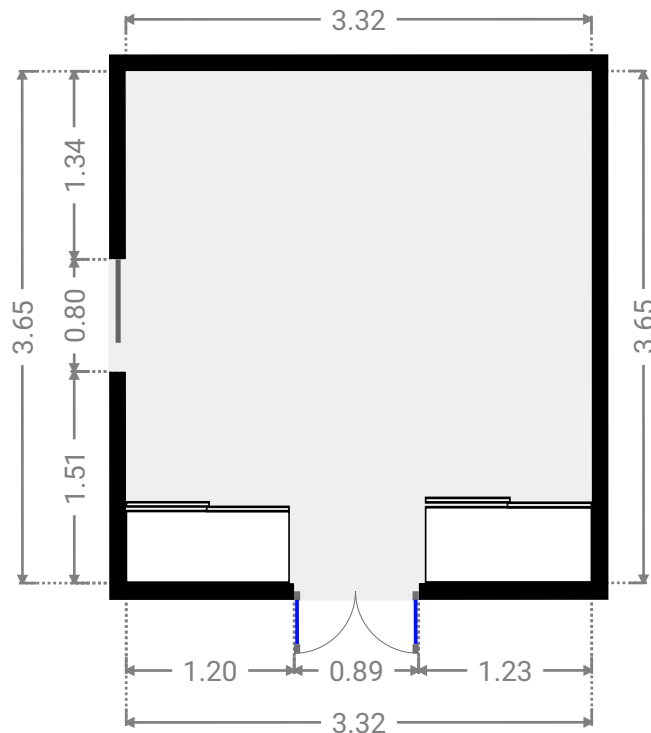
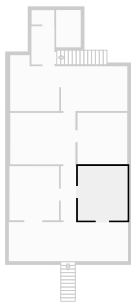
▼ **Bathroom**
1st Floor

WIDTH: 1.65 m • LENGTH: 2.50 m
AREA: 4.13 m² • PERIMETER: 8.30 m



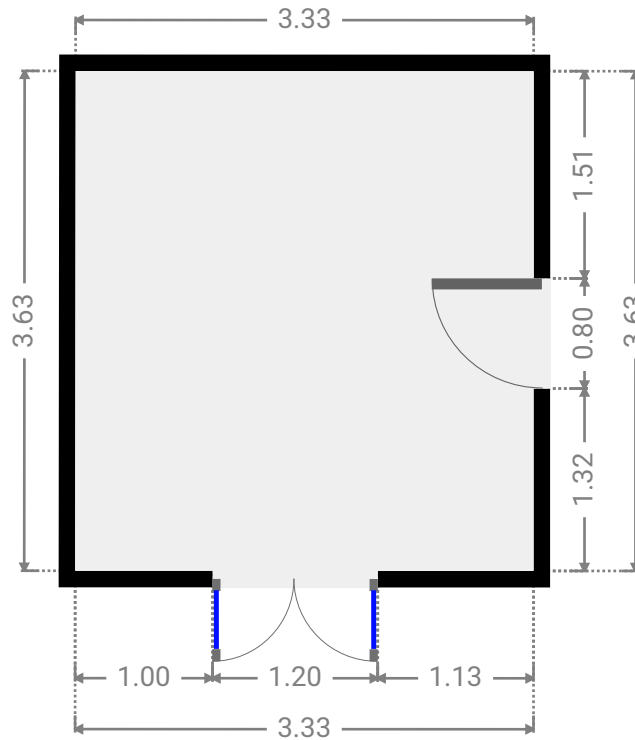
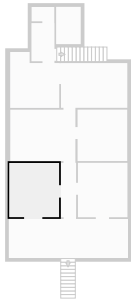
▼ **Bedroom**
1st Floor

WIDTH: 3.32 m • LENGTH: 3.65 m
AREA: 12.12 m² • PERIMETER: 13.94 m



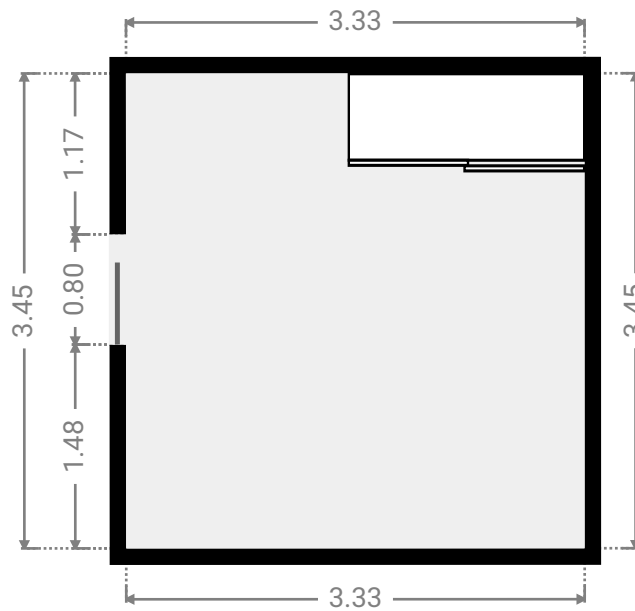
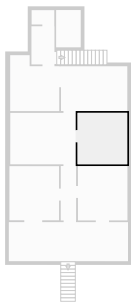
▼ **Bedroom**
1st Floor

WIDTH: 3.33 m • LENGTH: 3.63 m
AREA: 12.08 m² • PERIMETER: 13.92 m



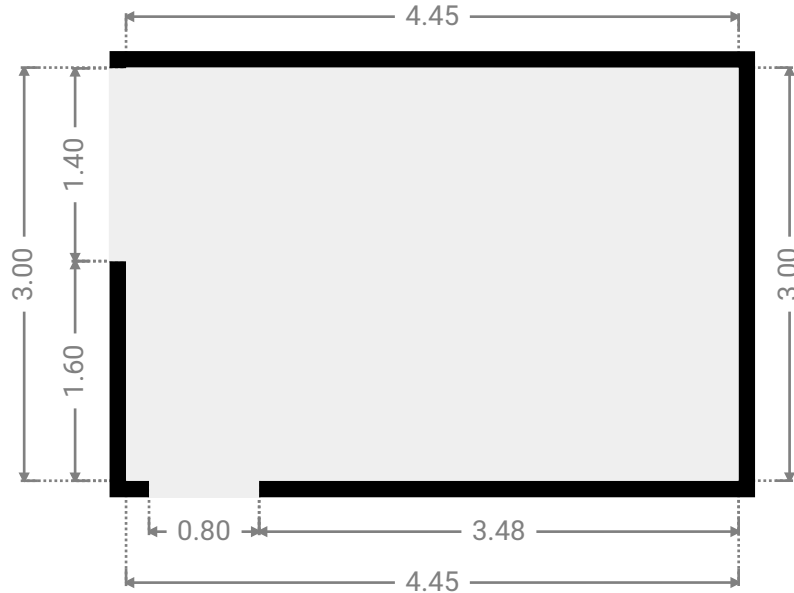
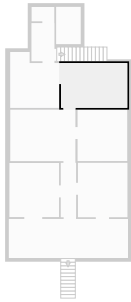
▼ **Bedroom**
1st Floor

WIDTH: 3.33 m • LENGTH: 3.45 m
AREA: 11.49 m² • PERIMETER: 13.56 m



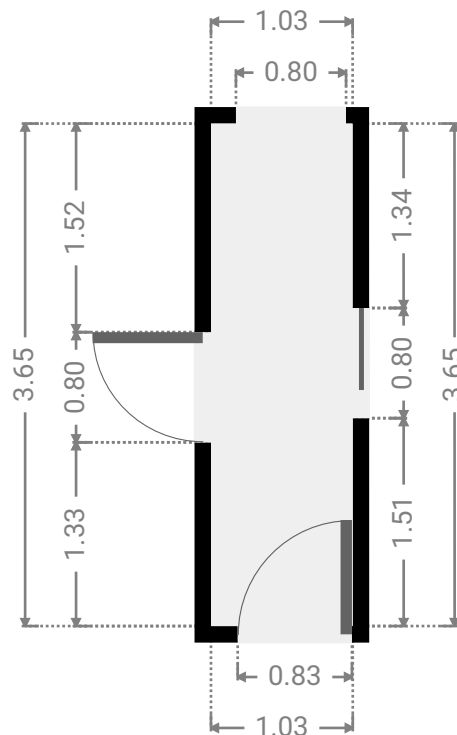
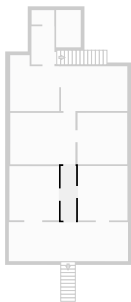
▼ Dining Room
1st Floor

WIDTH: 4.45 m • LENGTH: 3.00 m
AREA: 13.35 m² • PERIMETER: 14.90 m



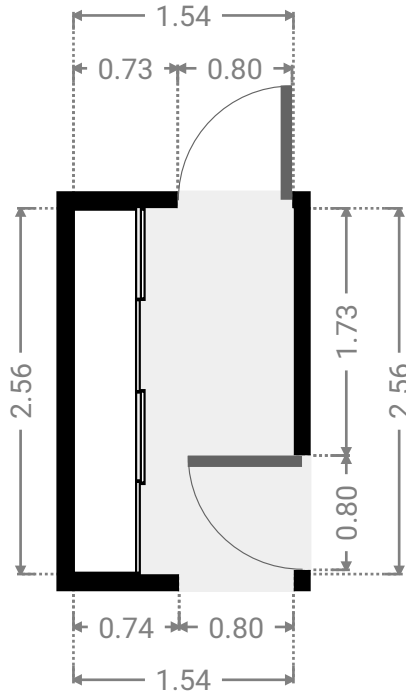
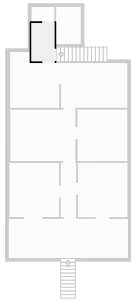
▼ Hall
1st Floor

WIDTH: 1.03 m • LENGTH: 3.65 m
AREA: 3.76 m² • PERIMETER: 9.36 m



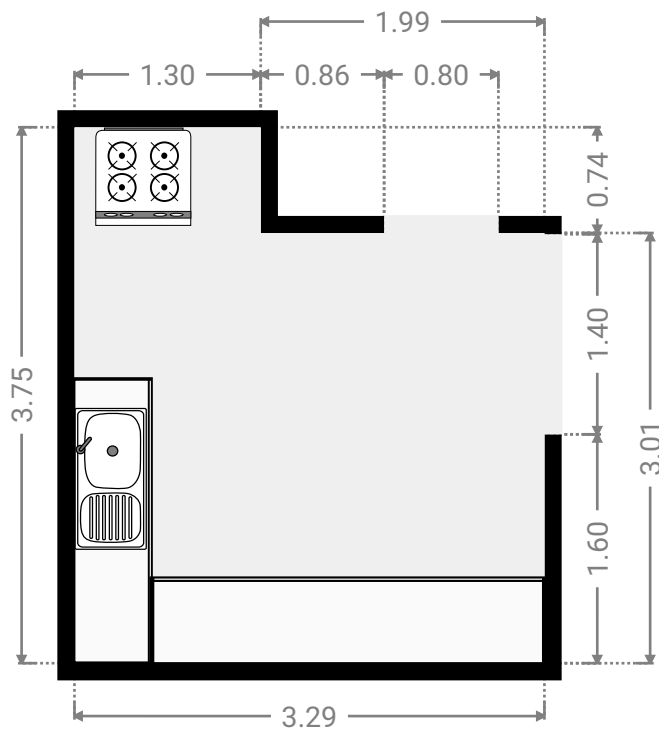
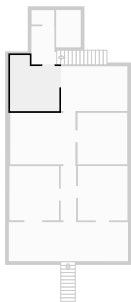
▼ **Hall**
1st Floor

WIDTH: 1.54 m • LENGTH: 2.56 m
AREA: 3.94 m² • PERIMETER: 8.20 m



▼ **Kitchen**
1st Floor

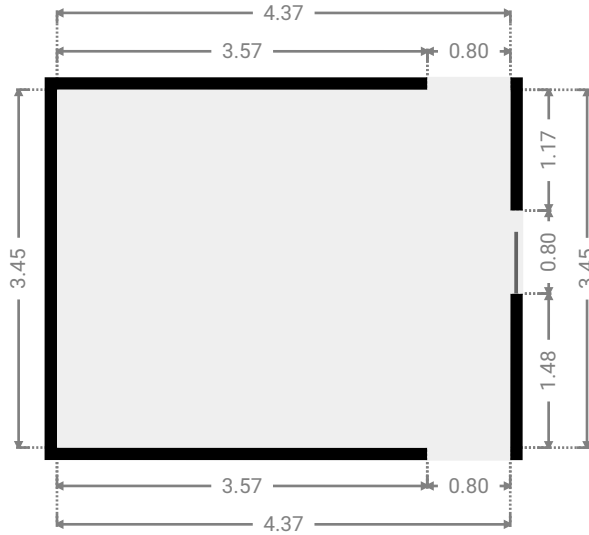
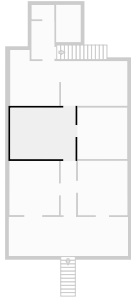
WIDTH: 3.29 m • LENGTH: 3.75 m
AREA: 10.87 m² • PERIMETER: 14.08 m



FLOORS: 2

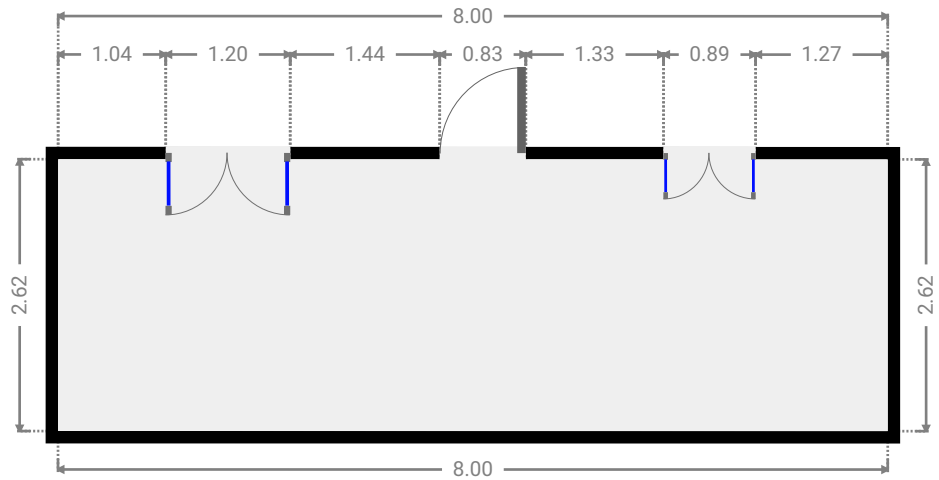
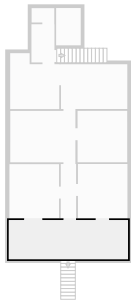
▼ Living Room
1st Floor

WIDTH: 4.37 m • LENGTH: 3.45 m
AREA: 15.08 m² • PERIMETER: 15.64 m



▼ Other
1st Floor

WIDTH: 8.00 m • LENGTH: 2.62 m
AREA: 20.96 m² • PERIMETER: 21.24 m



▼ Toilet
1st Floor

WIDTH: 1.52 m • LENGTH: 0.96 m
AREA: 1.46 m² • PERIMETER: 4.96 m

