

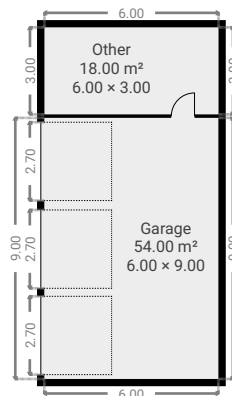
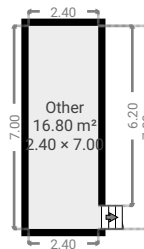
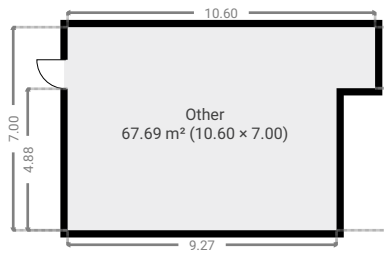
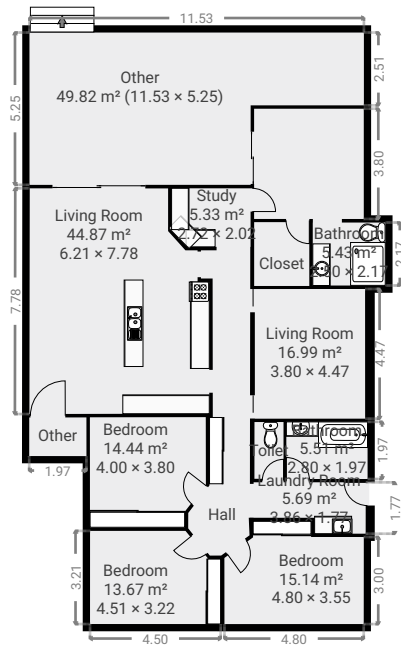
612 Montgomerie Street

SUBMITTED BY
Ray White Rockhampton Casey
stockers@cqoz.com

CREATED ON
2022-12-05

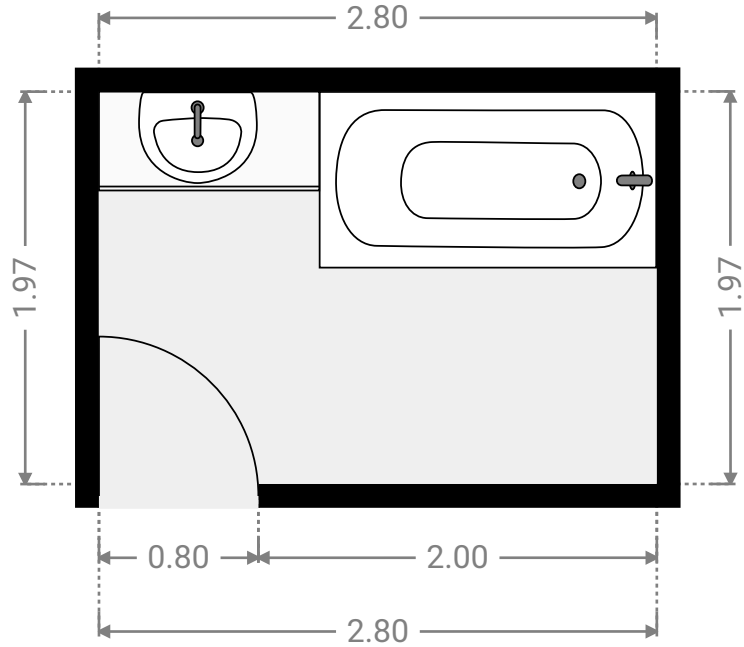
Floors
1

▼ Ground Floor



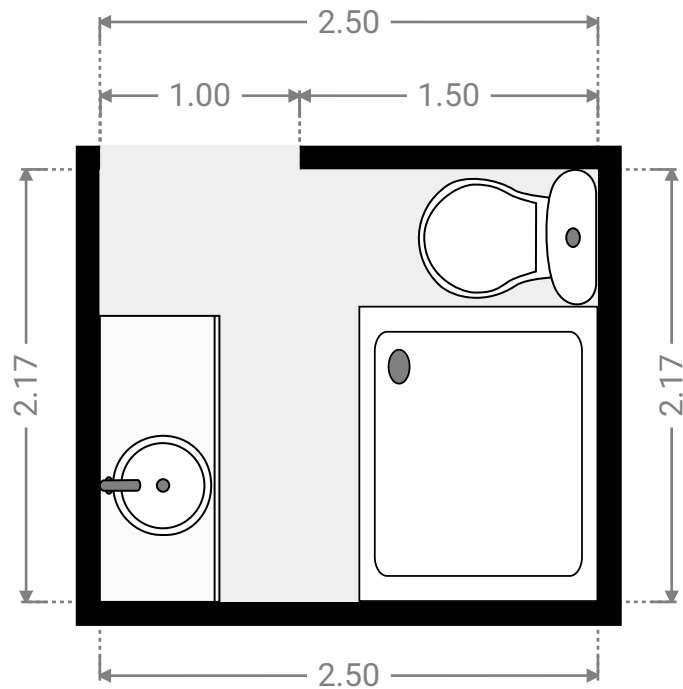
▼ Bathroom
Ground Floor

WIDTH: 2.80 m • LENGTH: 1.97 m
AREA: 5.51 m² • PERIMETER: 9.54 m



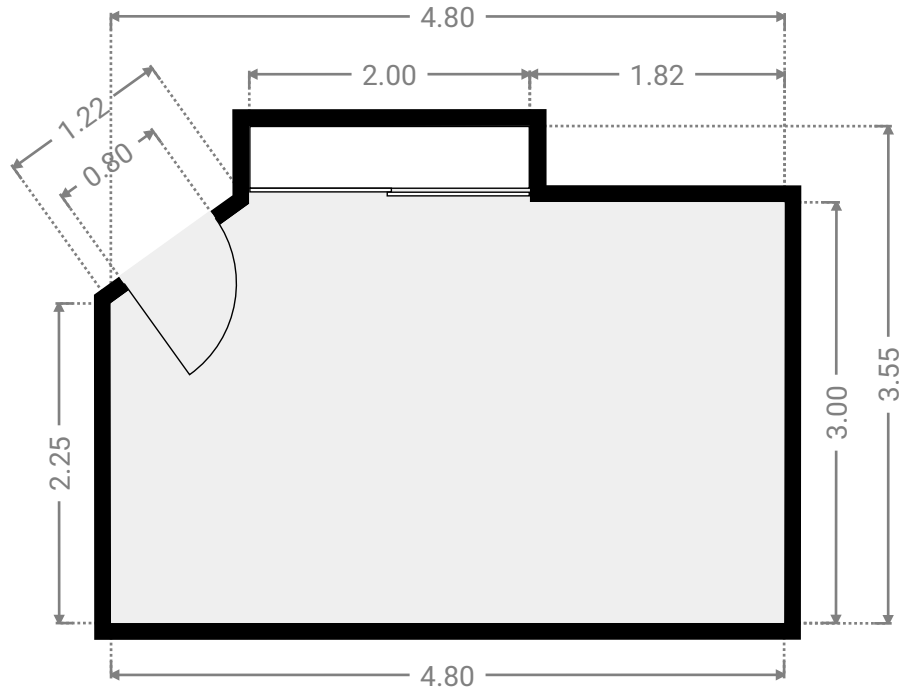
▼ Bathroom
Ground Floor

WIDTH: 2.50 m • LENGTH: 2.17 m
AREA: 5.43 m² • PERIMETER: 9.34 m



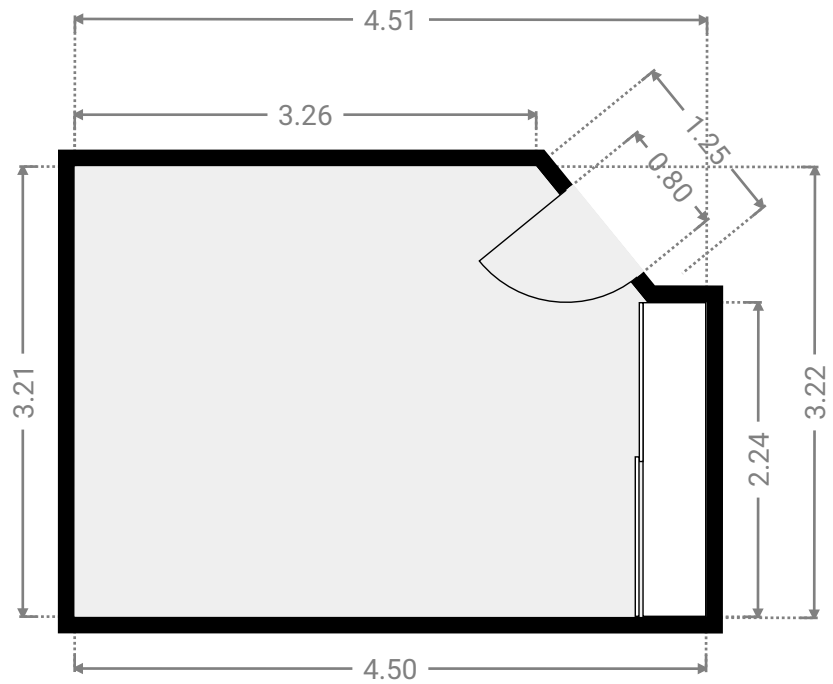
▼ **Bedroom**
Ground Floor

WIDTH: 4.80 m • LENGTH: 3.55 m
AREA: 15.14 m² • PERIMETER: 16.21 m



▼ **Bedroom**
Ground Floor

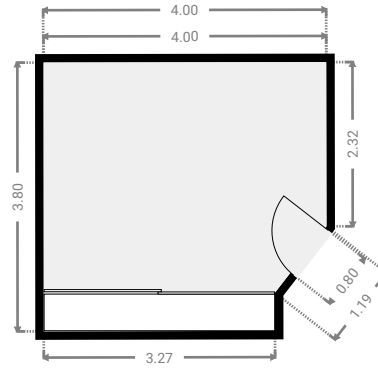
WIDTH: 4.51 m • LENGTH: 3.22 m
AREA: 13.67 m² • PERIMETER: 14.92 m



FLOORS: 1

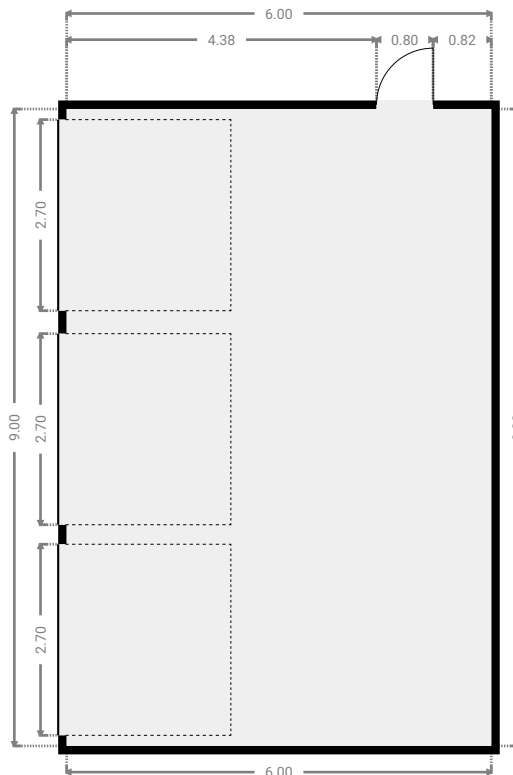
▼ **Bedroom**
Ground Floor

WIDTH: 4.00 m • LENGTH: 3.80 m
AREA: 14.44 m² • PERIMETER: 15.11 m



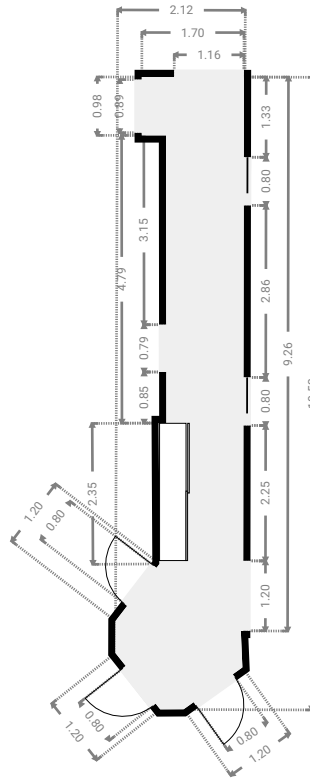
▼ **Garage**
Ground Floor

WIDTH: 6.00 m • LENGTH: 9.00 m
AREA: 54.00 m² • PERIMETER: 30.00 m



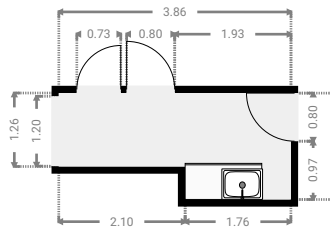
▼ **Hall**
Ground Floor

WIDTH: 2.12 m • LENGTH: 10.53 m
AREA: 15.18 m² • PERIMETER: 24.71 m



▼ **Laundry Room**
Ground Floor

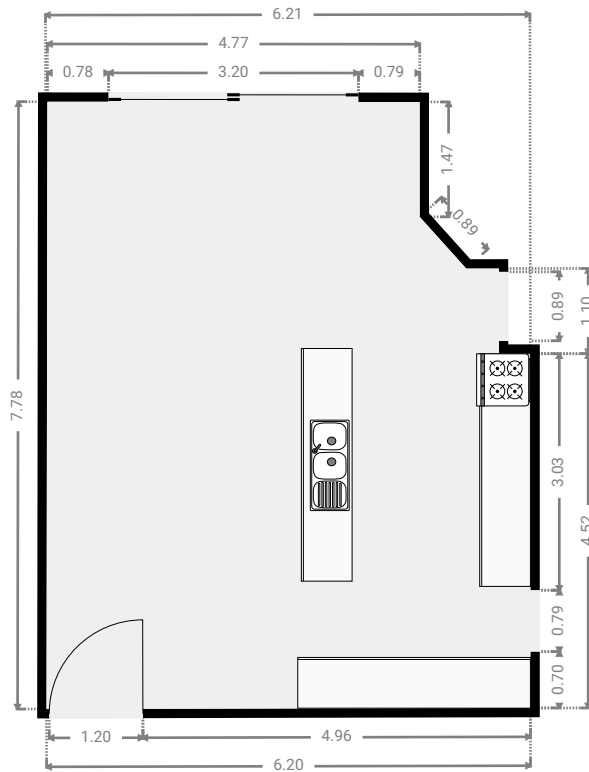
WIDTH: 3.86 m • LENGTH: 1.77 m
AREA: 5.69 m² • PERIMETER: 11.27 m



FLOORS: 1

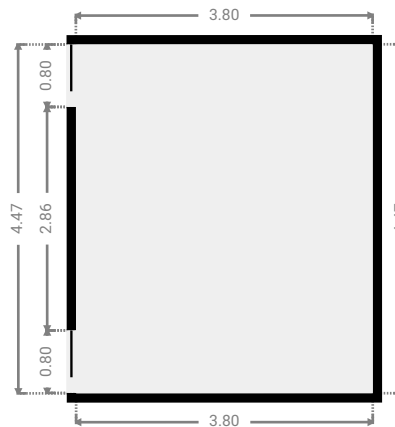
▼ Living Room
Ground Floor

WIDTH: 6.21 m • LENGTH: 7.78 m
AREA: 44.87 m² • PERIMETER: 27.56 m



▼ Living Room
Ground Floor

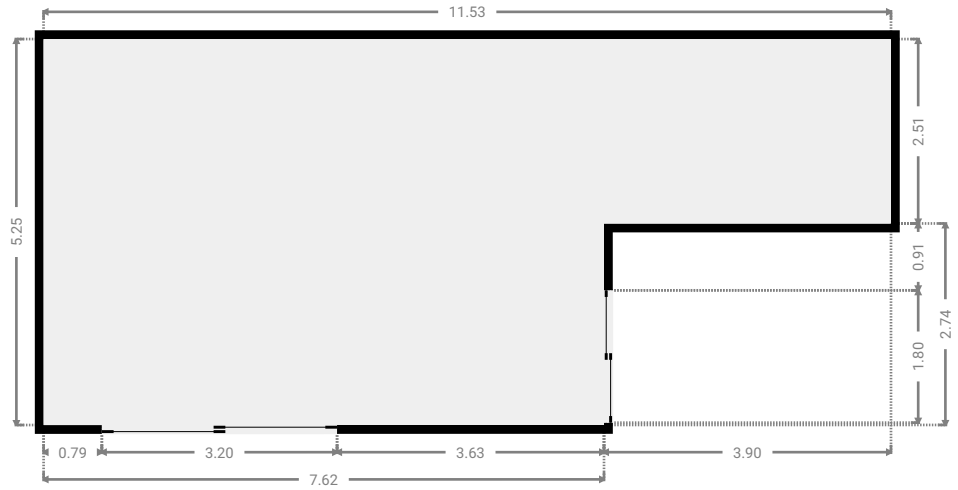
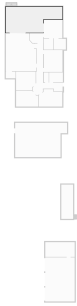
WIDTH: 3.80 m • LENGTH: 4.47 m
AREA: 16.99 m² • PERIMETER: 16.54 m



FLOORS: 1

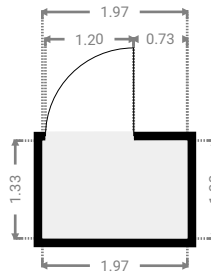
▼ Other
Ground Floor

WIDTH: 11.53 m • LENGTH: 5.25 m
AREA: 49.82 m² • PERIMETER: 33.56 m



▼ Other
Ground Floor

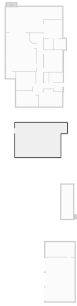
WIDTH: 1.97 m • LENGTH: 1.33 m
AREA: 2.62 m² • PERIMETER: 6.60 m



FLOORS: 1

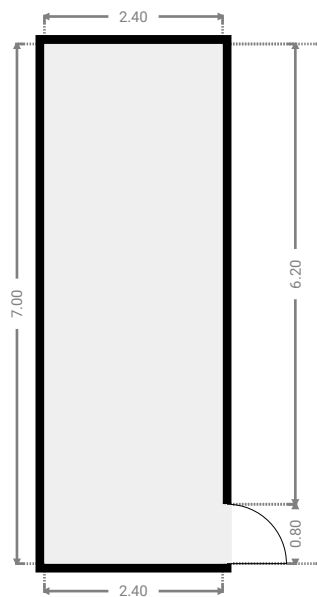
▼ Other
Ground Floor

WIDTH: 10.60 m • LENGTH: 7.00 m
AREA: 67.69 m² • PERIMETER: 35.20 m



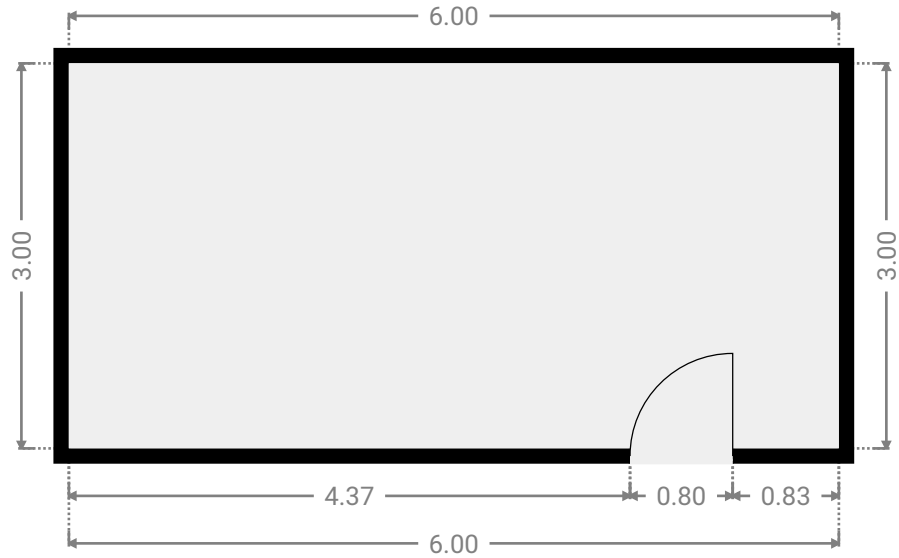
▼ Other
Ground Floor

WIDTH: 2.40 m • LENGTH: 7.00 m
AREA: 16.80 m² • PERIMETER: 18.80 m



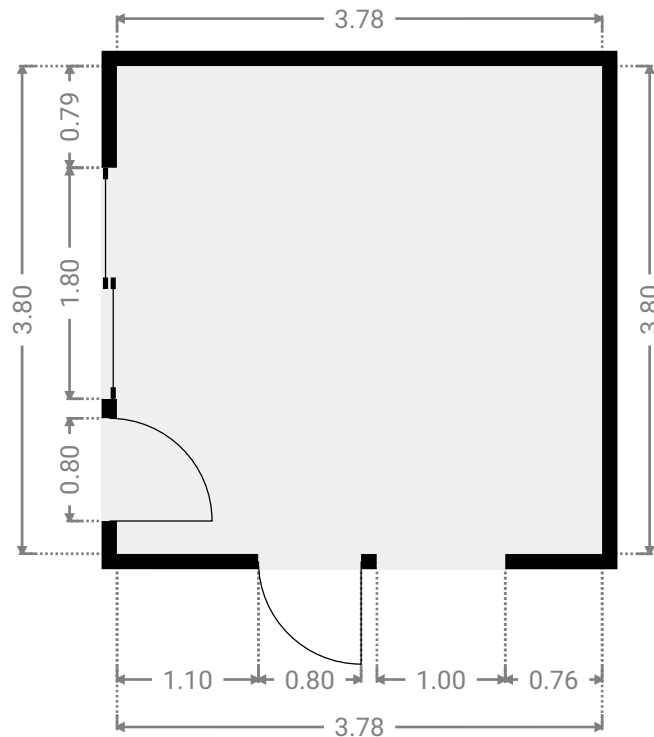
▼ Other
Ground Floor

WIDTH: 6.00 m • LENGTH: 3.00 m
AREA: 18.00 m² • PERIMETER: 18.00 m



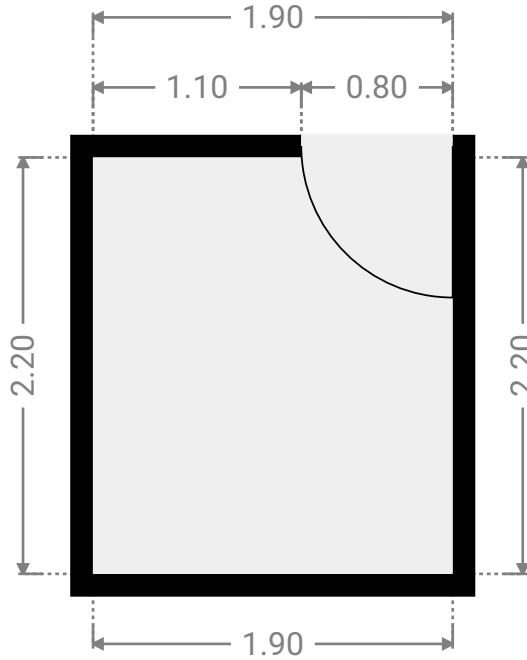
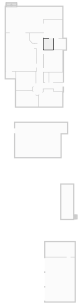
▼ Primary Bedroom
Ground Floor

WIDTH: 3.78 m • LENGTH: 3.80 m
AREA: 14.36 m² • PERIMETER: 15.16 m



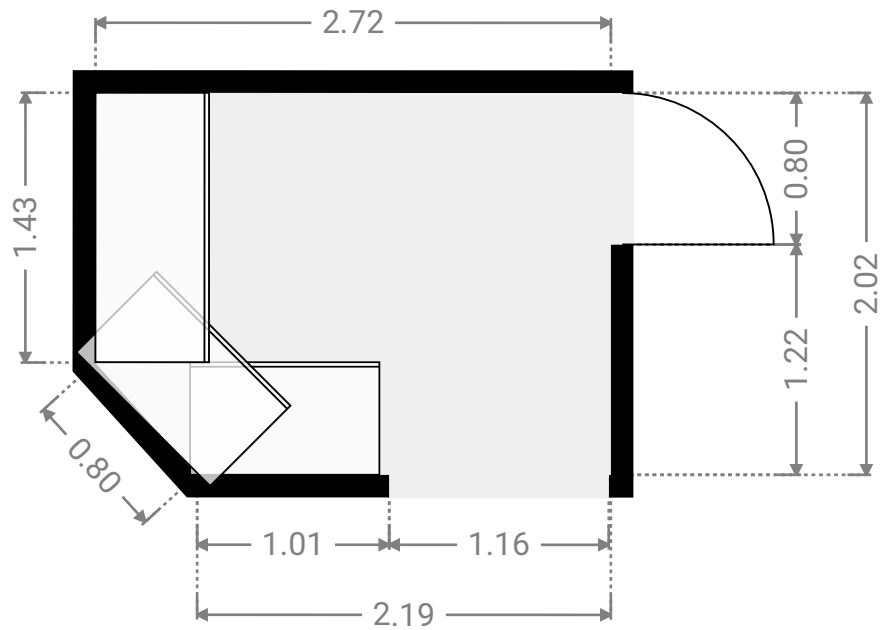
▼ **Closet**
Ground Floor

WIDTH: 1.90 m • LENGTH: 2.20 m
AREA: 4.18 m² • PERIMETER: 8.20 m



▼ **Study**
Ground Floor

WIDTH: 2.72 m • LENGTH: 2.02 m
AREA: 5.33 m² • PERIMETER: 9.15 m



▼ Toilet
Ground Floor

WIDTH: 1.00 m • LENGTH: 1.96 m
AREA: 1.96 m² • PERIMETER: 5.92 m

