



Ray White Rockhampton  
 Rockhampton.pm2@raywhite.com  
 (07)4923 0000  
 2016-11-08

**192** m<sup>2</sup>

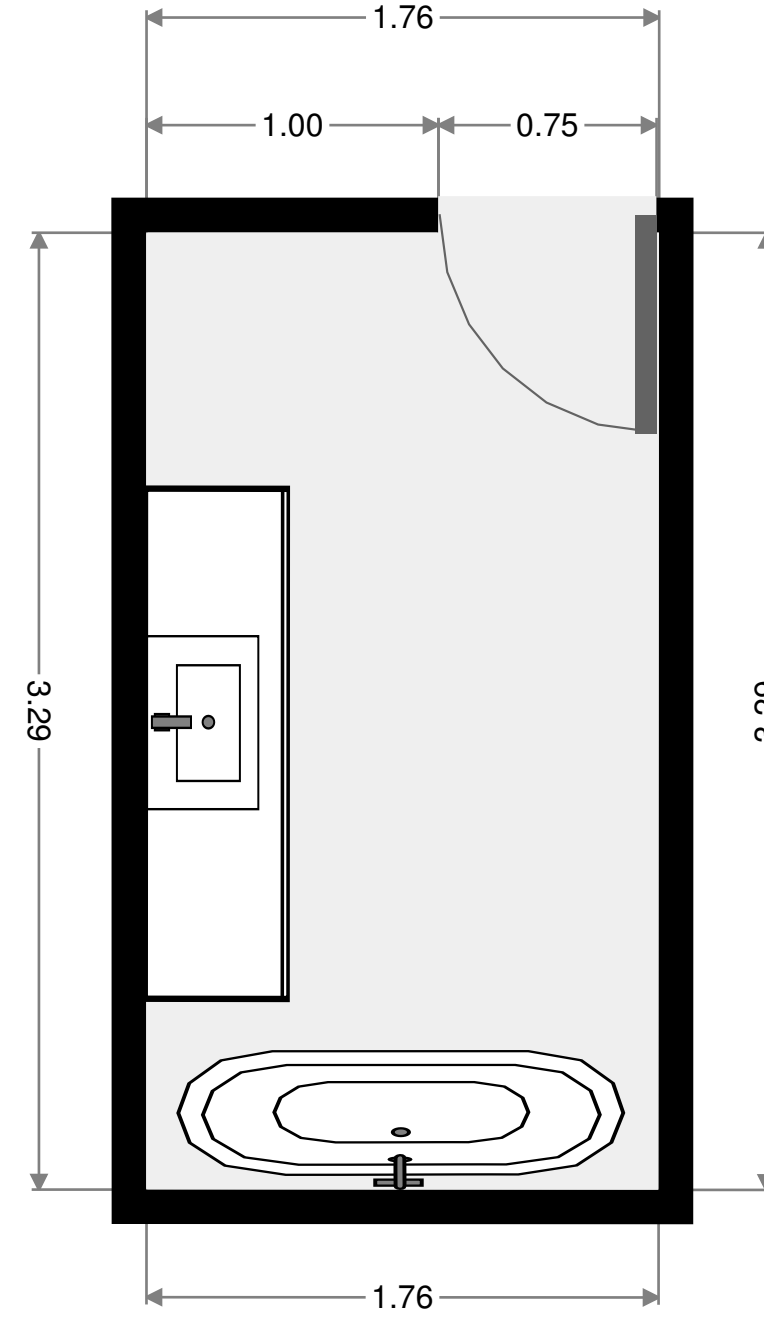
**1** Floor

**4** Bedrooms

**2** Bathrooms

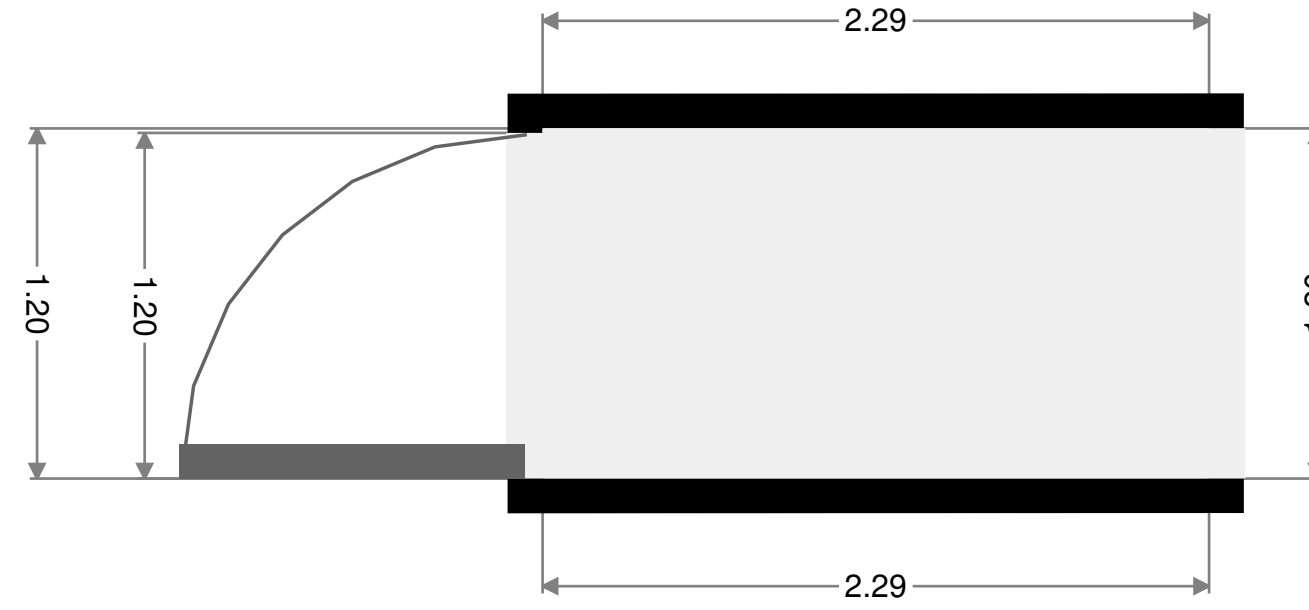
## Bathroom

Width: 1.76 m  
 Length: 3.29 m  
 Area: 5.80 m<sup>2</sup>  
 Perimeter: 10.11 m



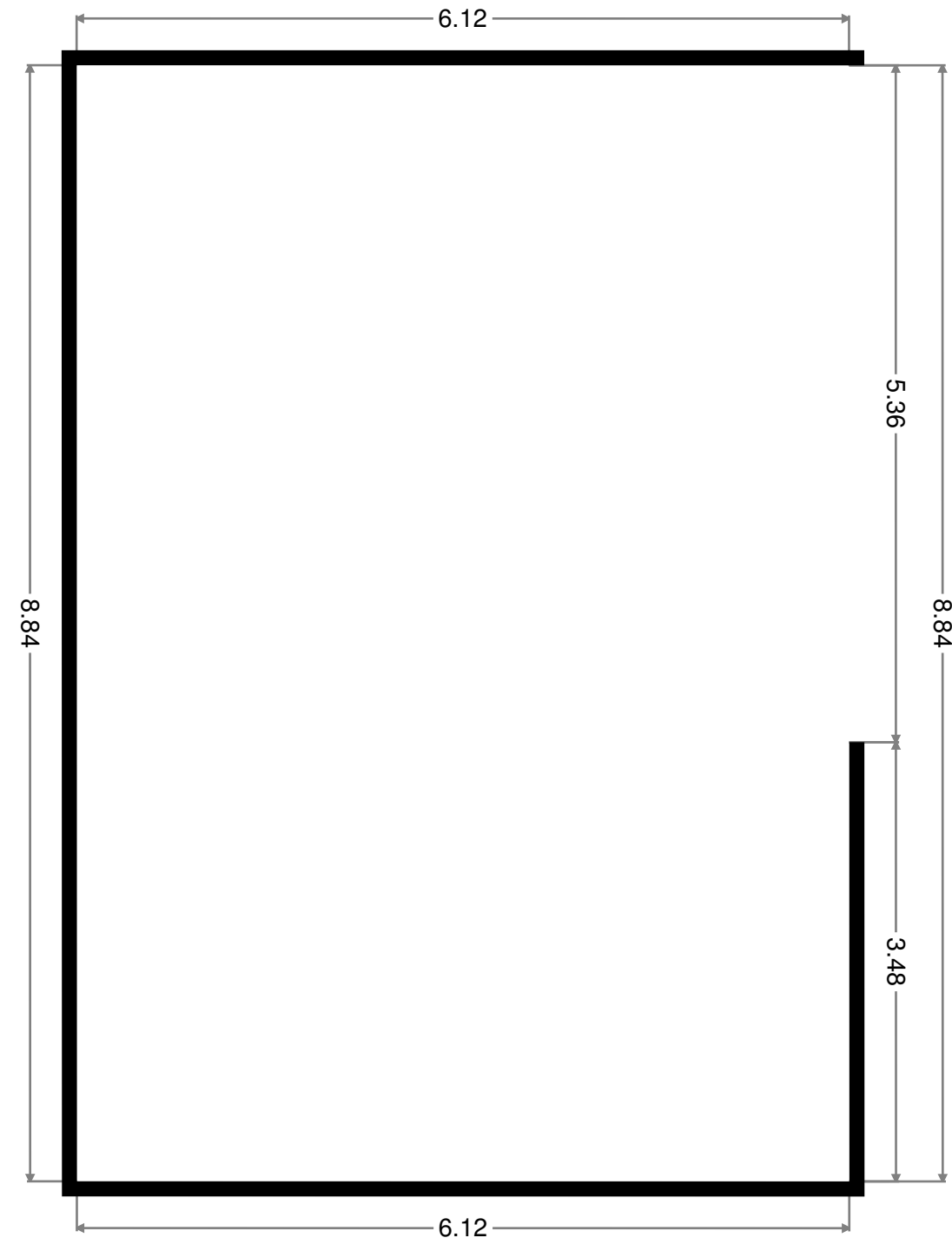
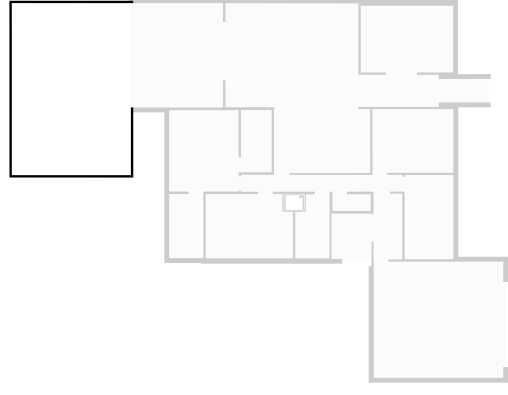
## Foyer

Width: 1.20 m  
 Length: 2.29 m  
 Area: 2.76 m<sup>2</sup>  
 Perimeter: 6.99 m



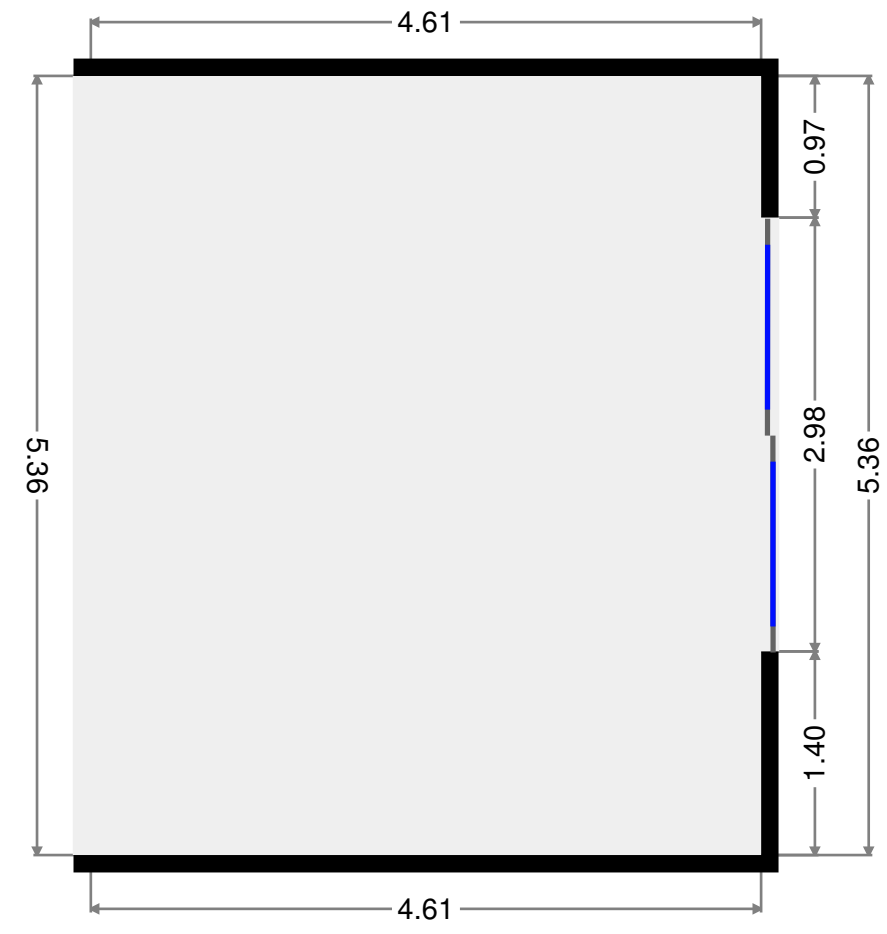
## Pool Area

Width: 6.12 m  
 Length: 8.84 m  
 Area: 54.03 m<sup>2</sup>  
 Perimeter: 29.90 m  
 Ceiling Height: 2.17 m



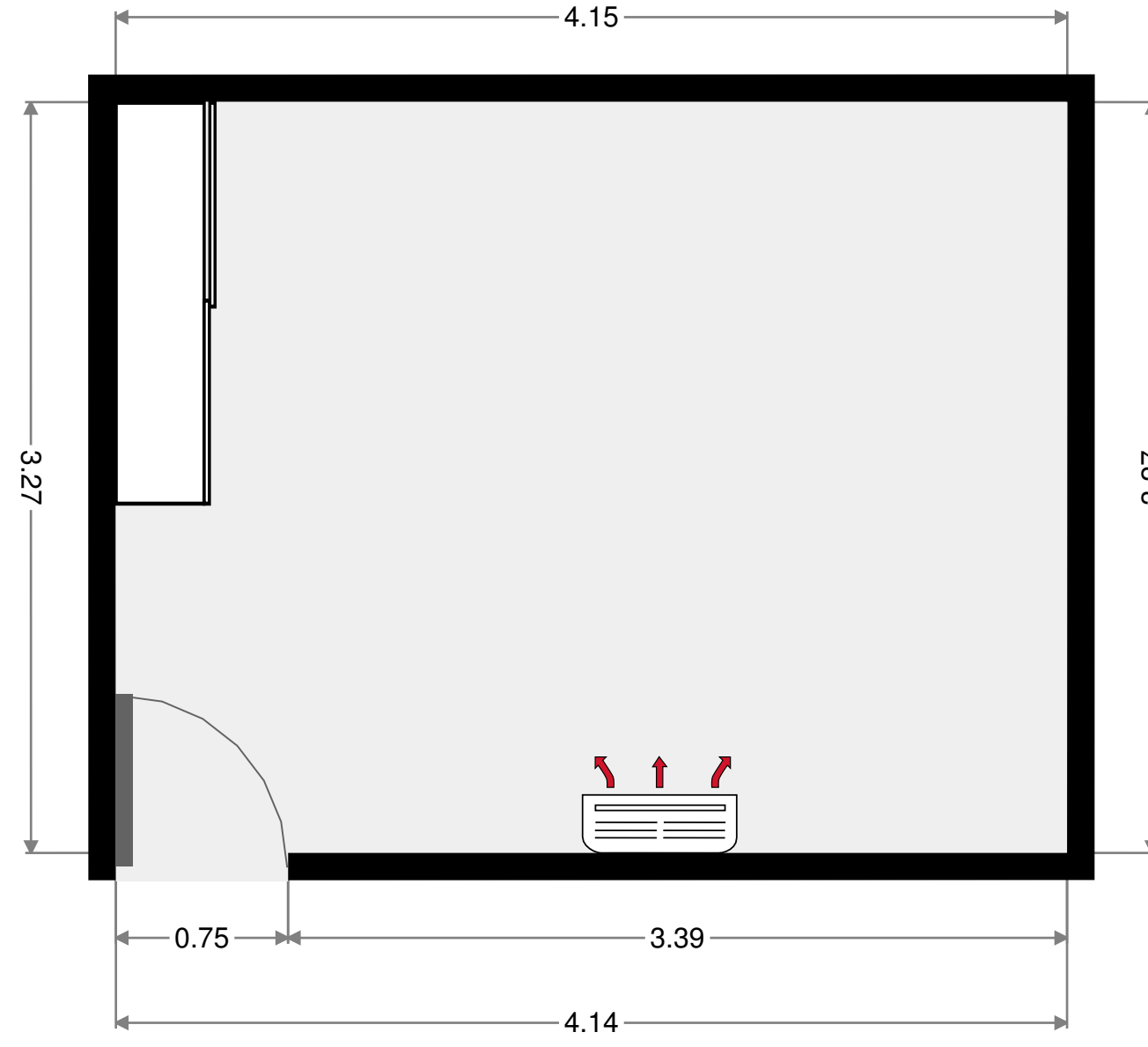
## Alfresco

Width: 4.61 m  
 Length: 5.36 m  
 Area: 24.70 m<sup>2</sup>  
 Perimeter: 19.94 m



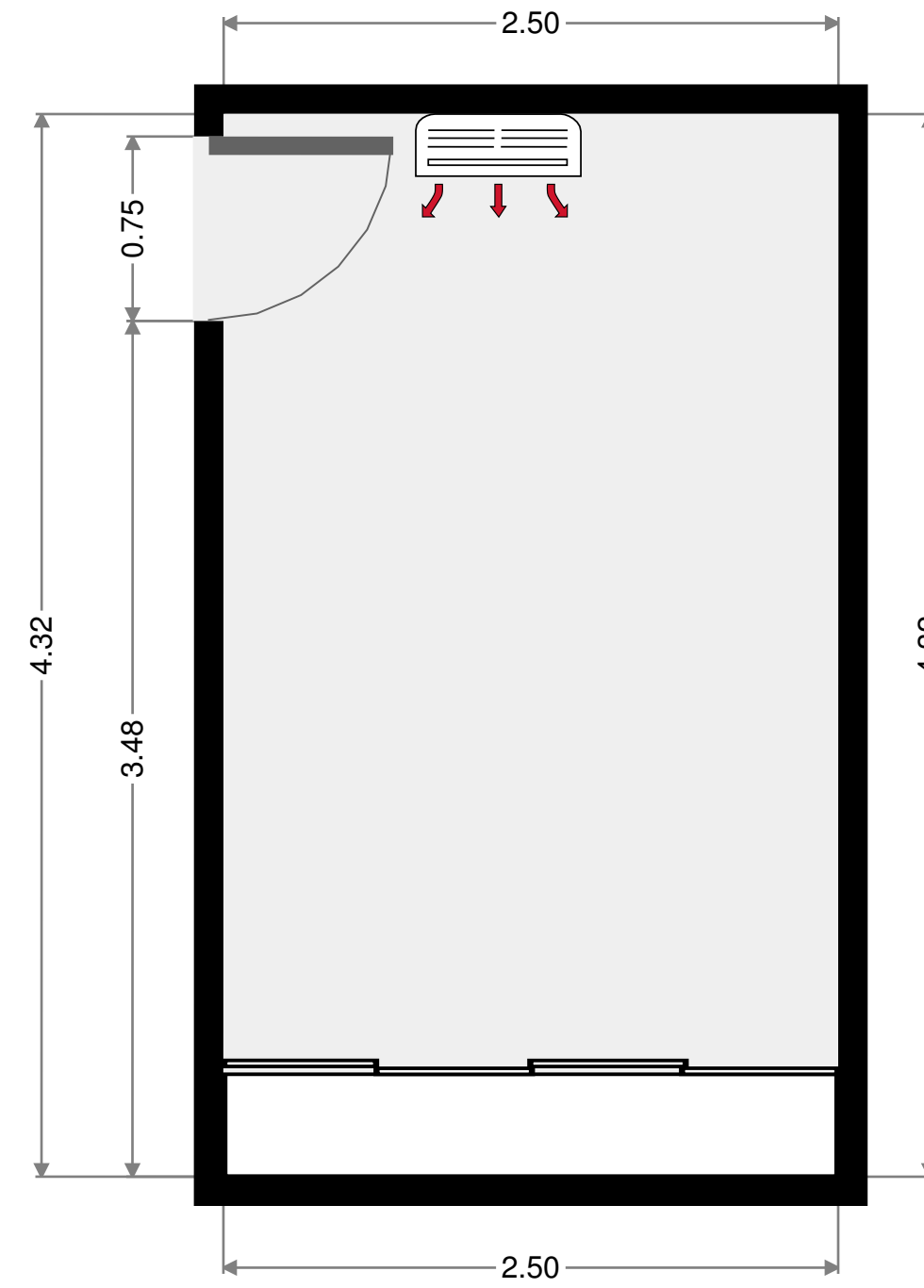
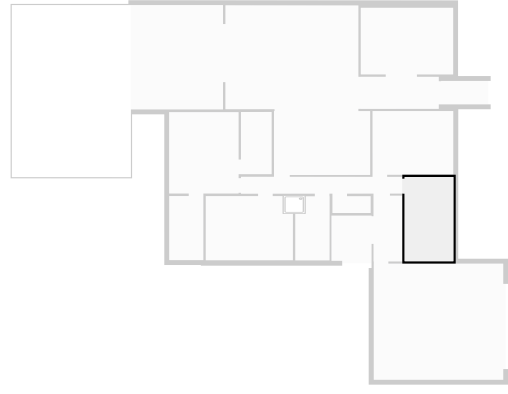
## Bedroom

Width: 3.27 m  
Length: 4.14 m  
Area: 13.55 m<sup>2</sup>  
Perimeter: 14.83 m



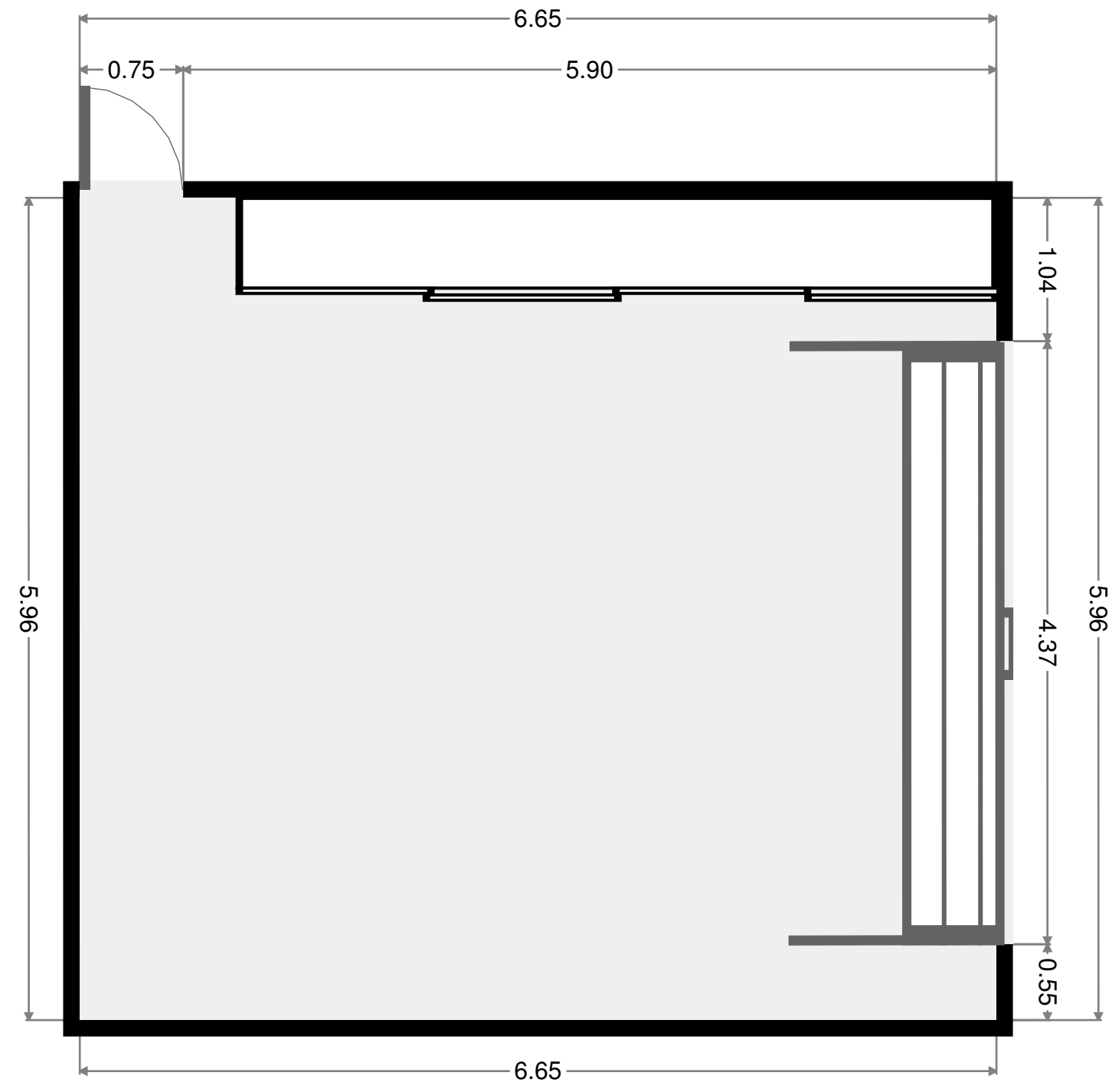
## Bedroom

Width: 2.50 m  
Length: 4.32 m  
Area: 10.81 m<sup>2</sup>  
Perimeter: 13.65 m



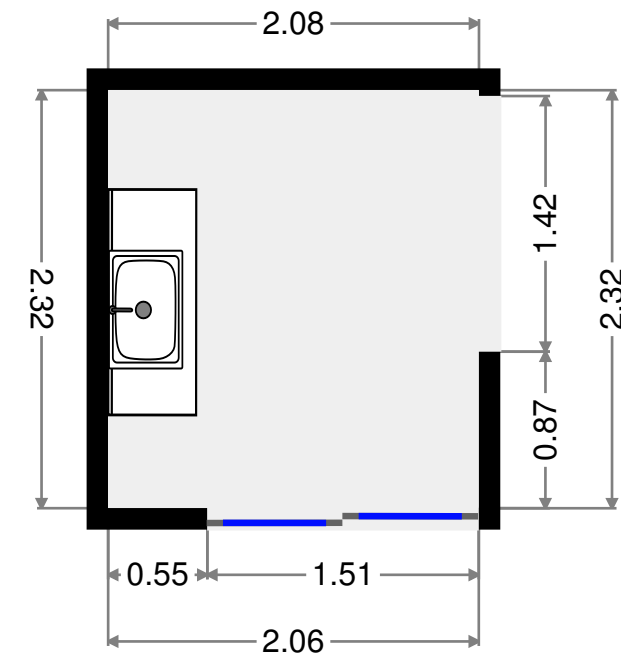
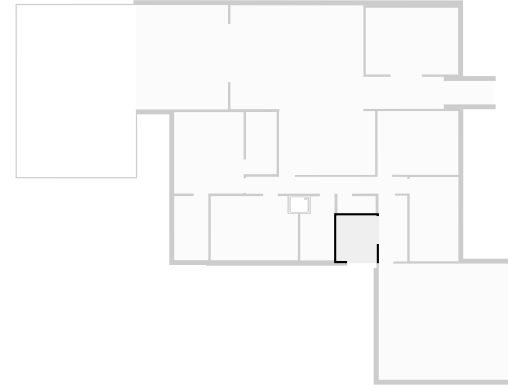
## Garage

Width: 5.96 m  
 Length: 6.65 m  
 Area: 39.65 m<sup>2</sup>  
 Perimeter: 25.23 m



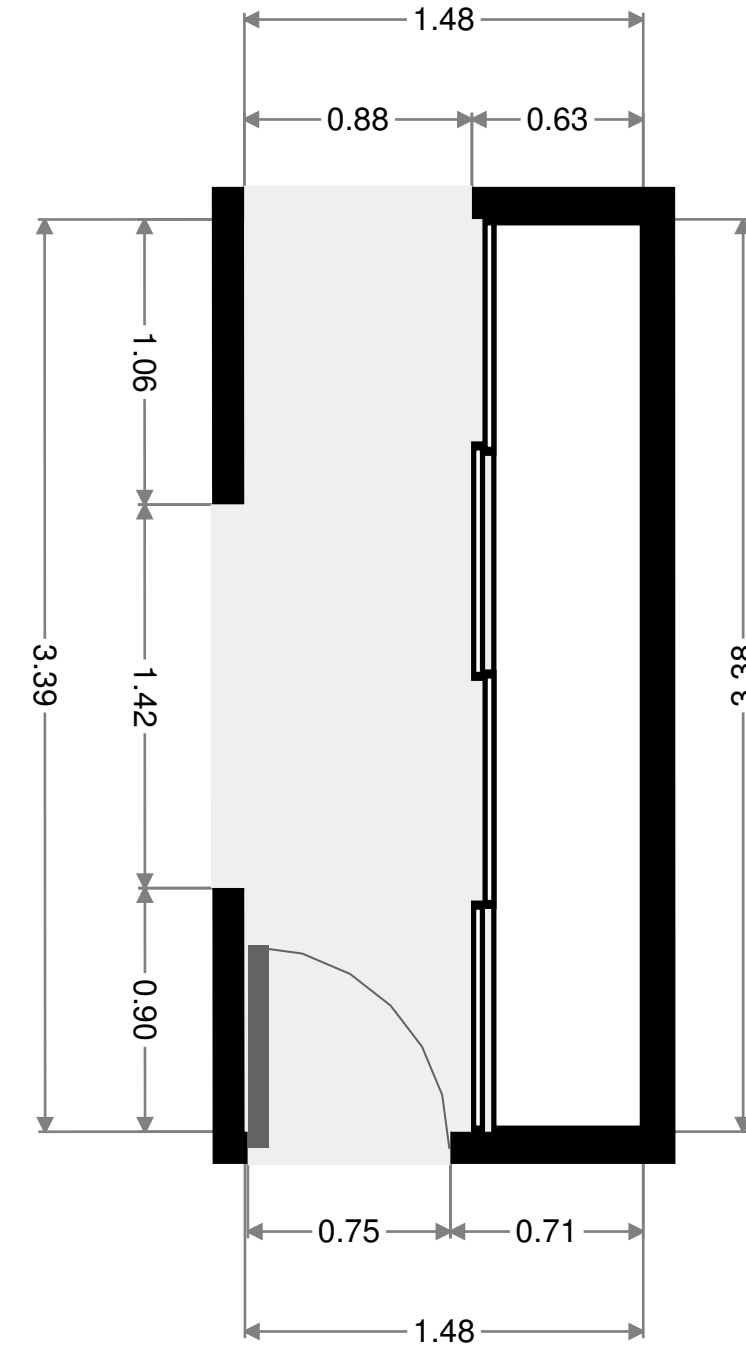
## Laundry Room

Width: 2.08 m  
 Length: 2.32 m  
 Area: 4.78 m<sup>2</sup>  
 Perimeter: 8.76 m



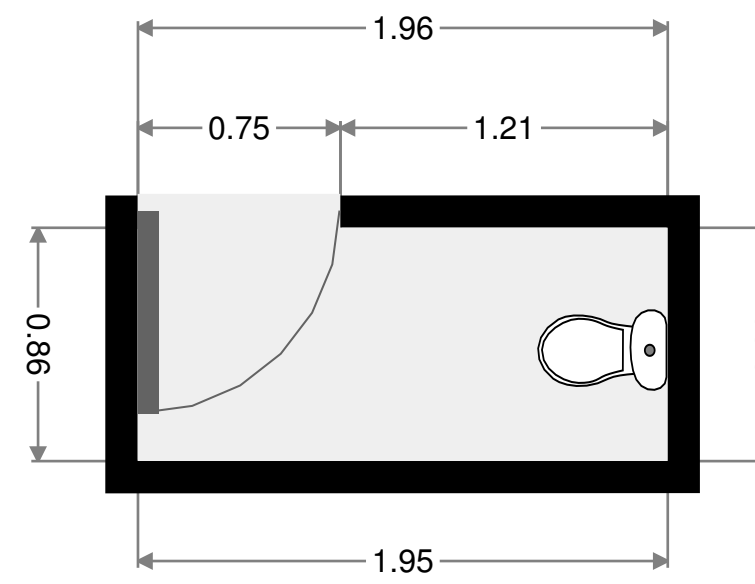
# Hall

Width: 1.47 m  
Length: 3.39 m  
Area: 4.99 m<sup>2</sup>  
Perimeter: 9.71 m



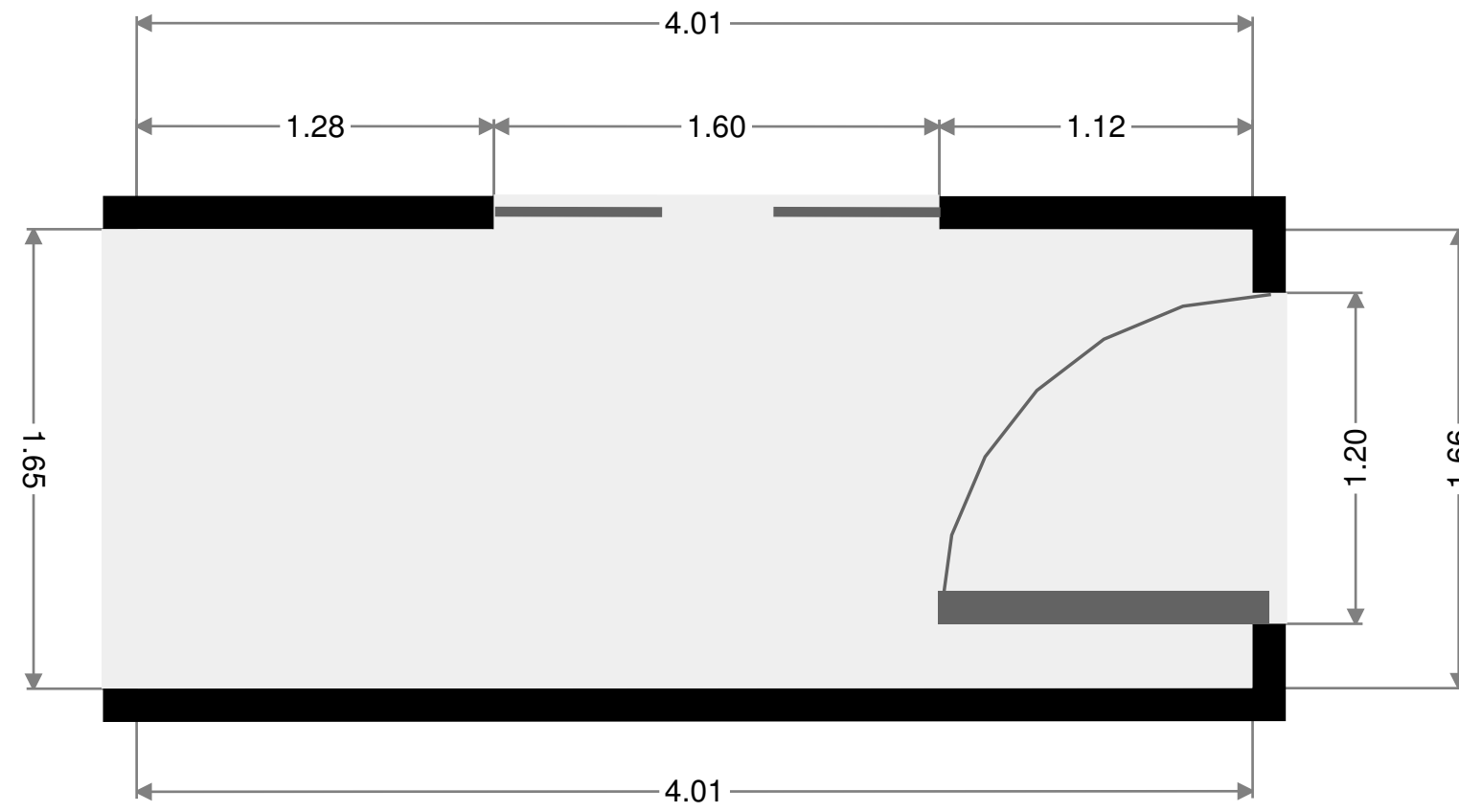
# Toilet

Width: 0.86 m  
Length: 1.95 m  
Area: 1.70 m<sup>2</sup>  
Perimeter: 5.65 m



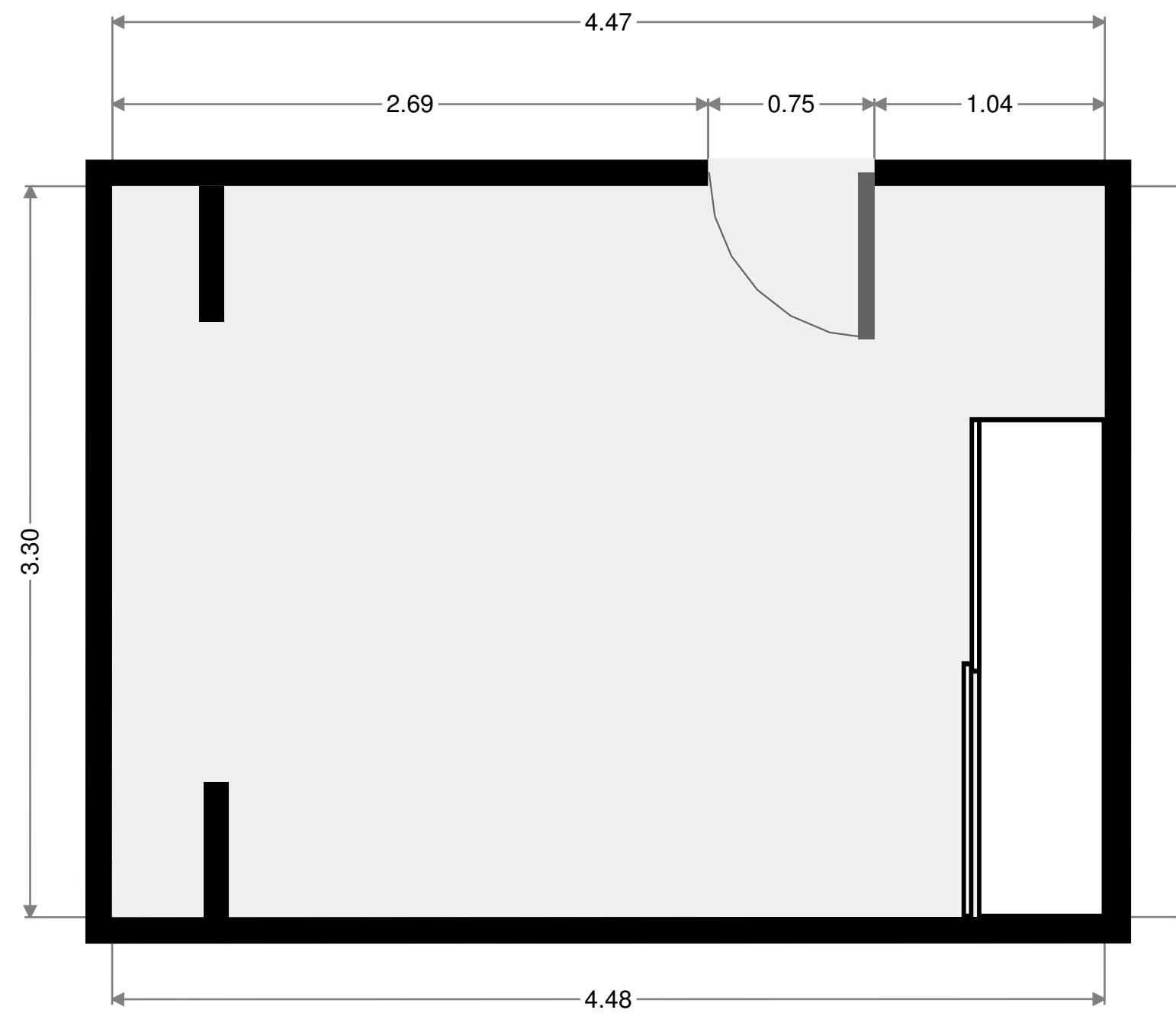
## Foyer

Width: 1.65 m  
Length: 4.01 m  
Area: 6.60 m<sup>2</sup>  
Perimeter: 11.31 m



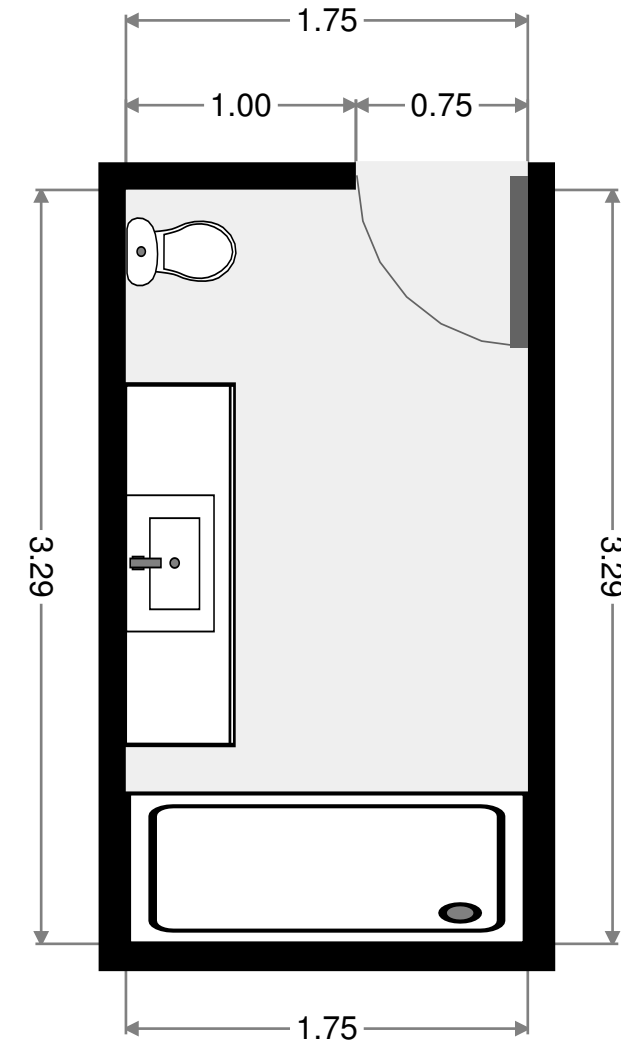
## Bedroom

Width: 3.29 m  
Length: 4.48 m  
Area: 14.74 m<sup>2</sup>  
Perimeter: 15.54 m



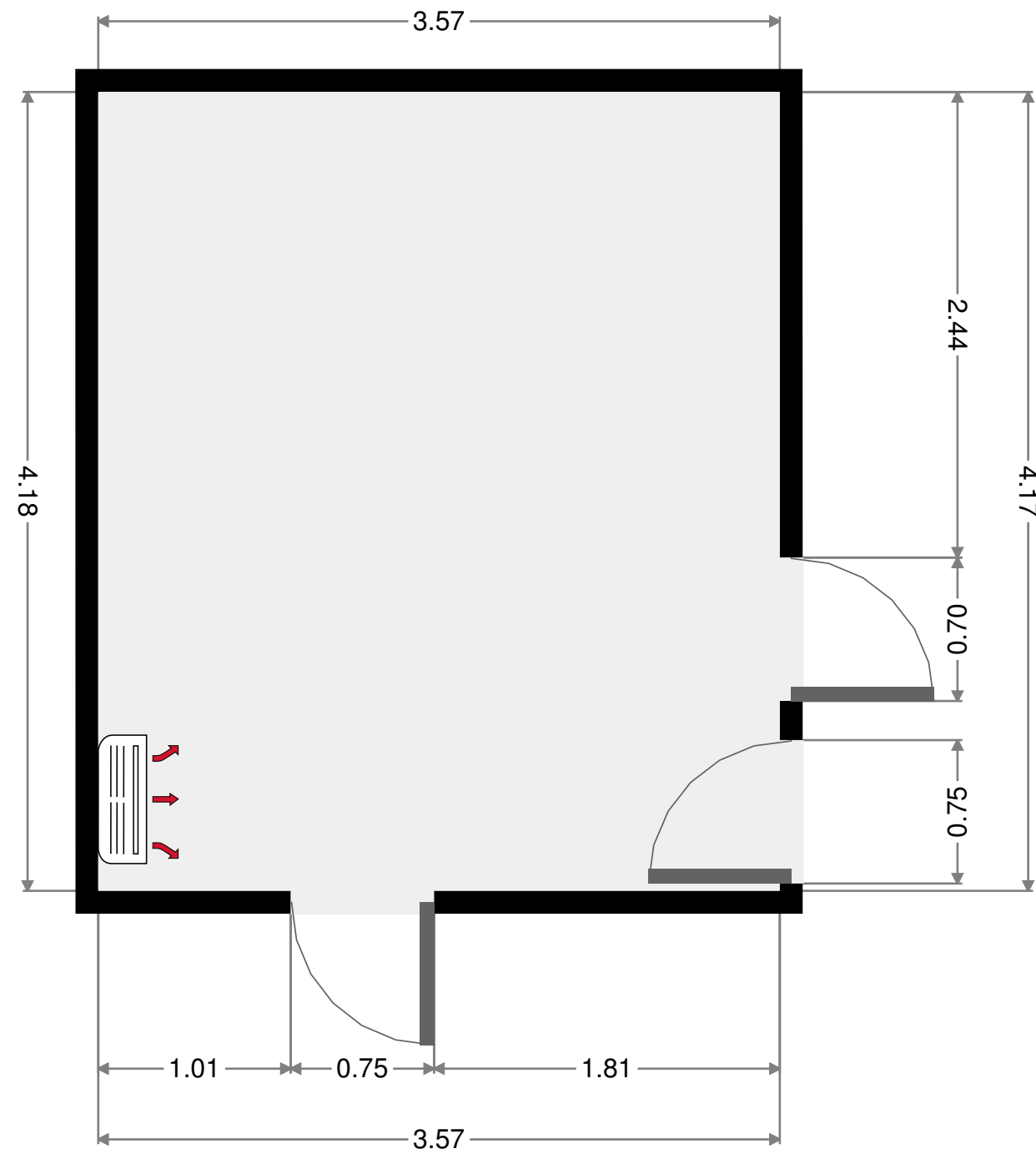
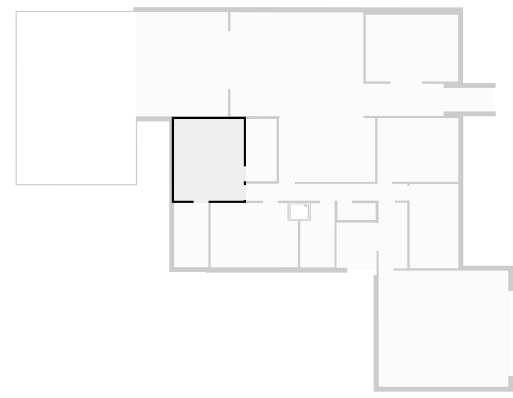
## Bathroom

Width: 1.75 m  
 Length: 3.29 m  
 Area: 5.77 m<sup>2</sup>  
 Perimeter: 10.09 m



## Master Bedroom

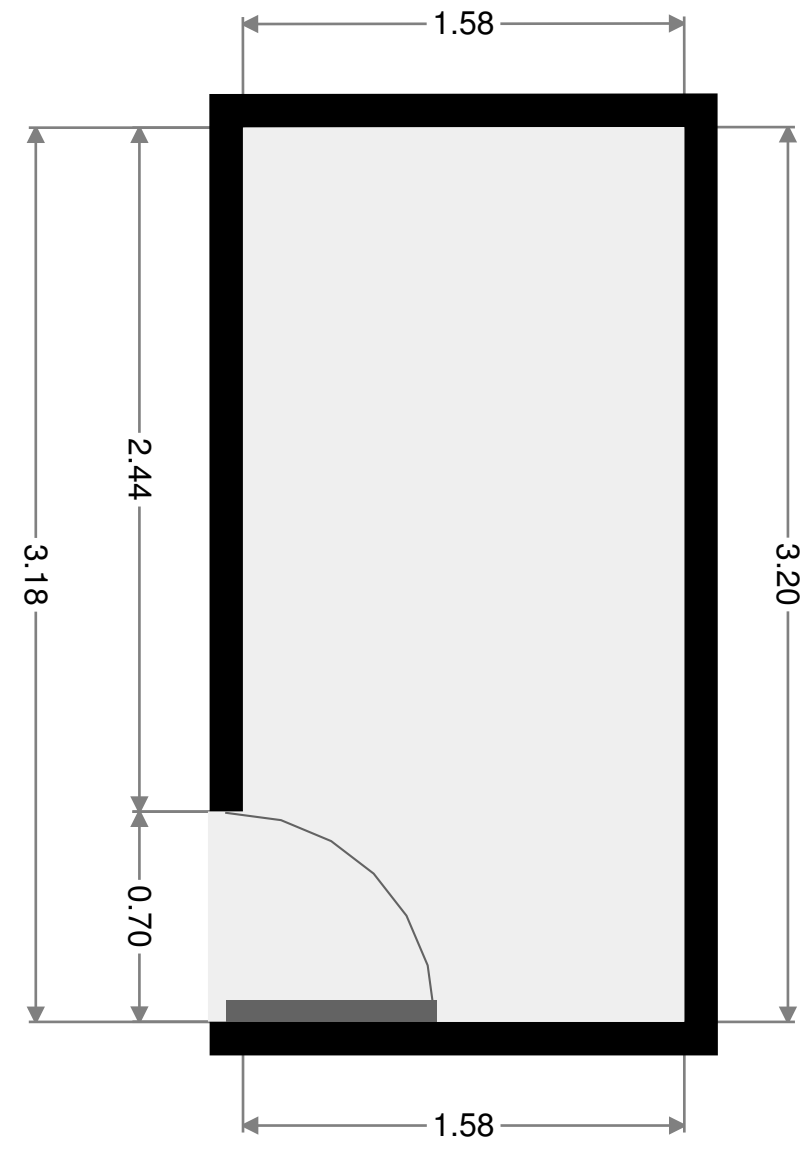
Width: 3.57 m  
 Length: 4.18 m  
 Area: 14.90 m<sup>2</sup>  
 Perimeter: 15.49 m





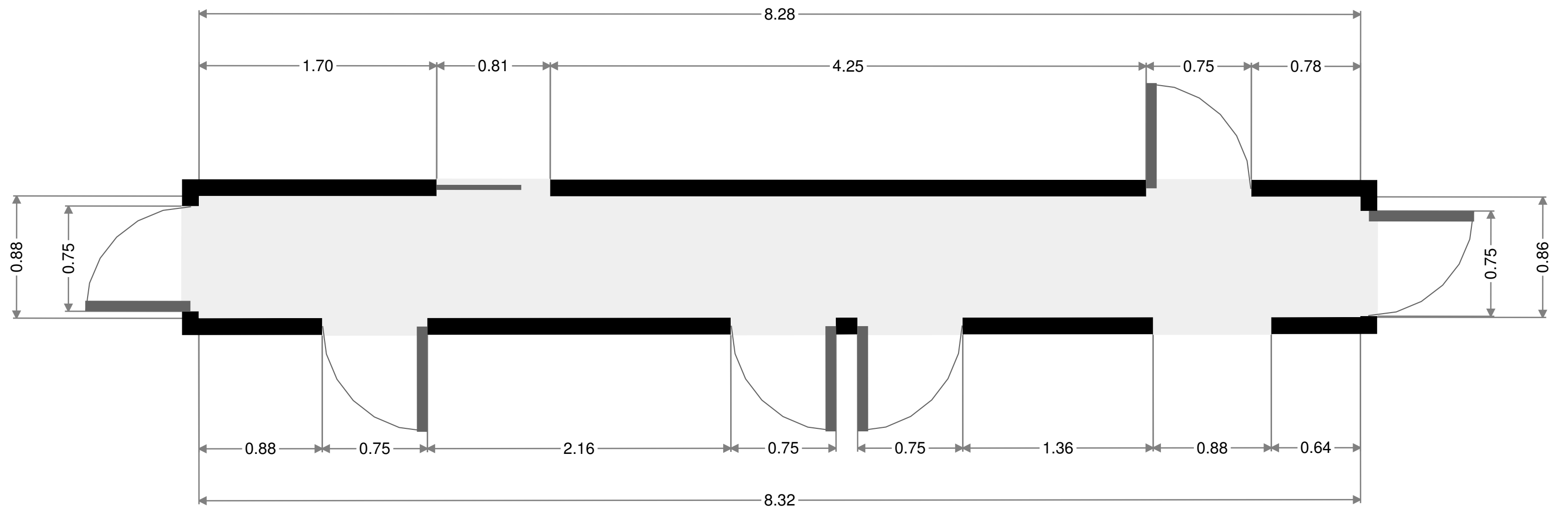
## WIR

Width: 1.58 m  
 Length: 3.18 m  
 Area: 5.03 m<sup>2</sup>  
 Perimeter: 9.54 m



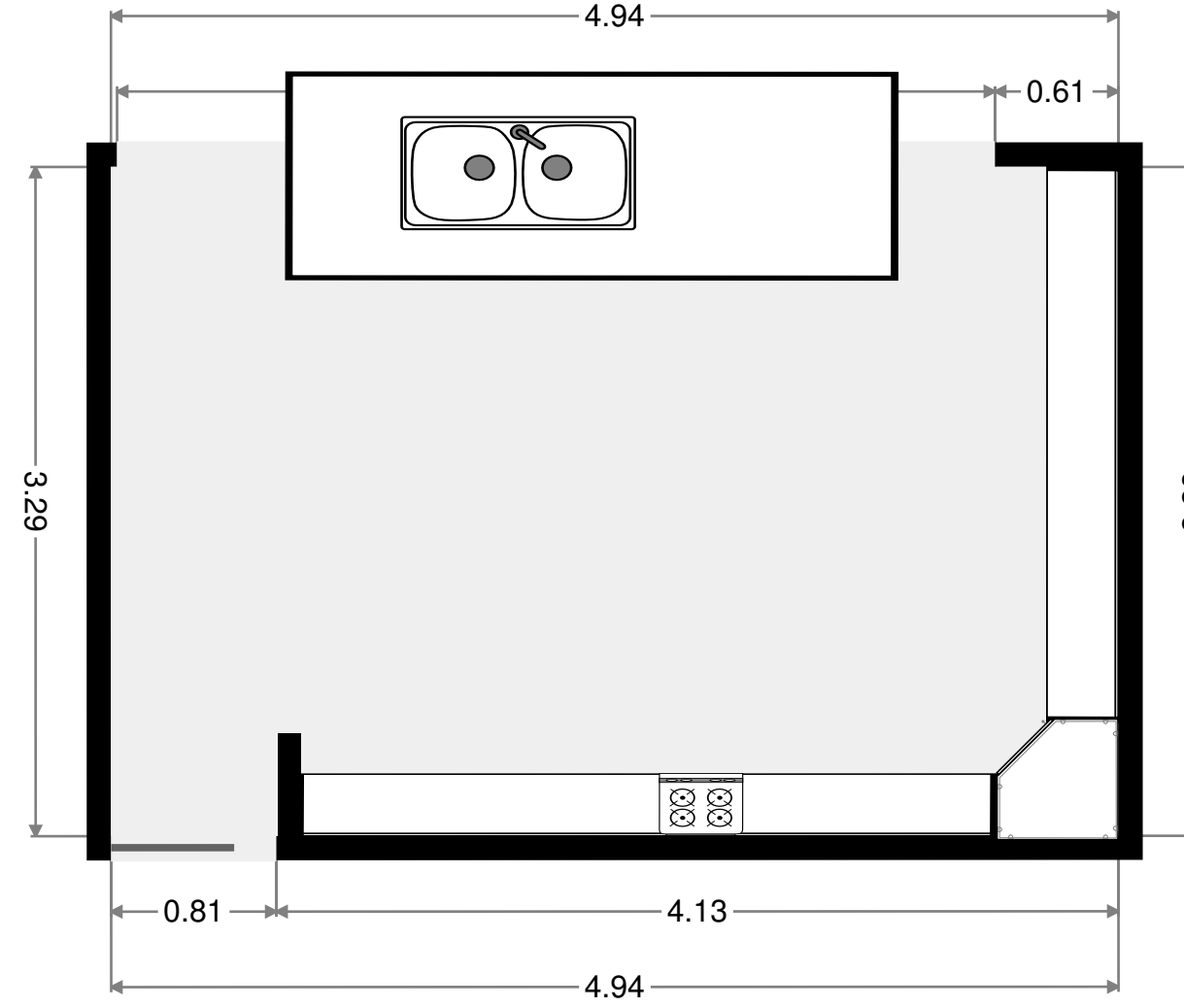
## Hall

Width: 0.88 m  
 Length: 8.28 m  
 Area: 7.16 m<sup>2</sup>  
 Perimeter: 18.30 m



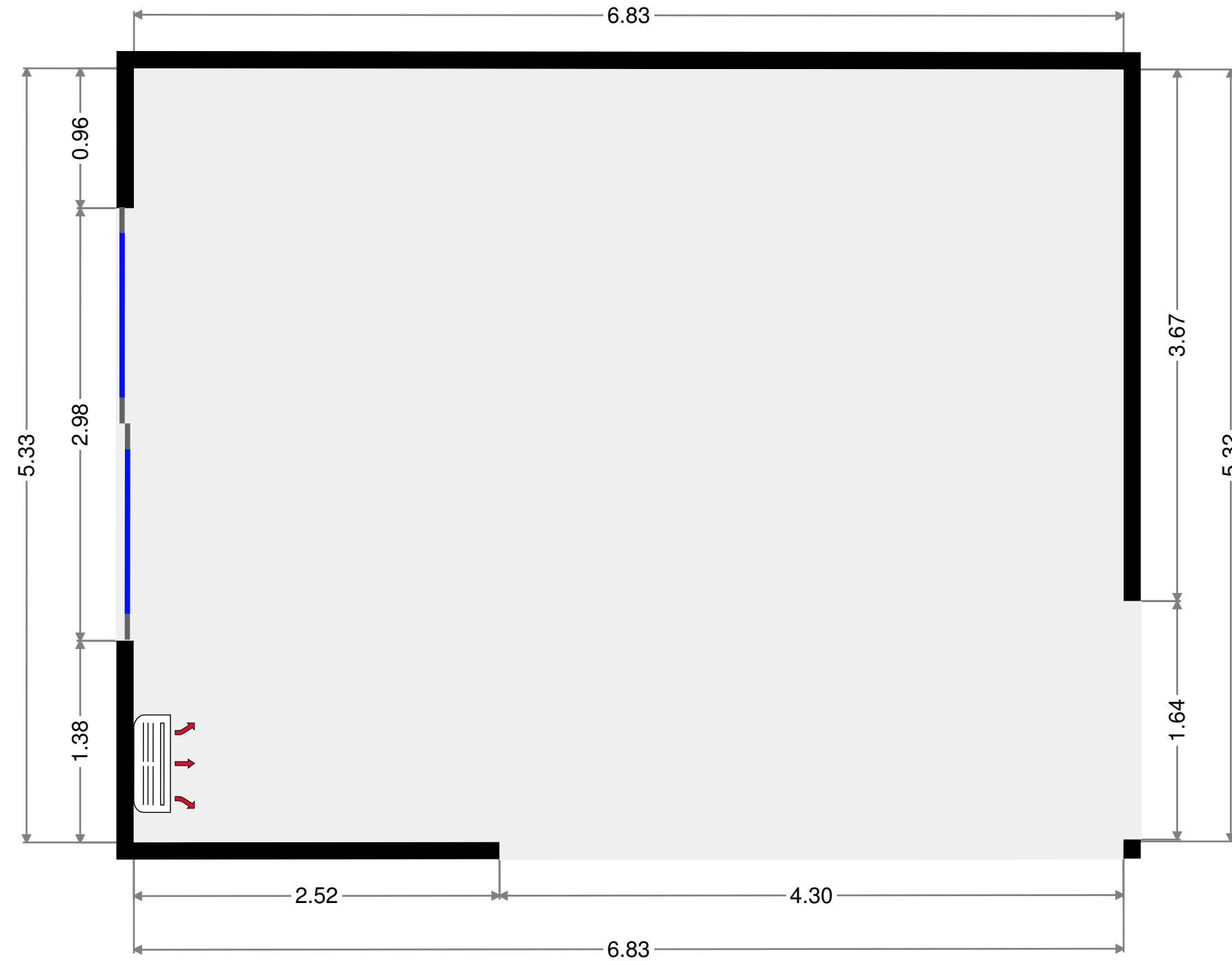
## Kitchen

Width: 3.28 m  
 Length: 4.94 m  
 Area: 16.20 m<sup>2</sup>  
 Perimeter: 16.44 m



## Dining Room/ Living Room

Width: 5.34 m  
 Length: 6.83 m  
 Area: 36.39 m<sup>2</sup>  
 Perimeter: 24.32 m



# Media Room

Width: 3.42 m  
Length: 4.75 m  
Area: 16.25 m<sup>2</sup>  
Perimeter: 16.34 m

