

# 60 Jamie Crescent

**SUBMITTED BY**

Ray White Rockhampton Casey  
stockers@cqoz.com

---

**CREATED ON**

2022-02-16

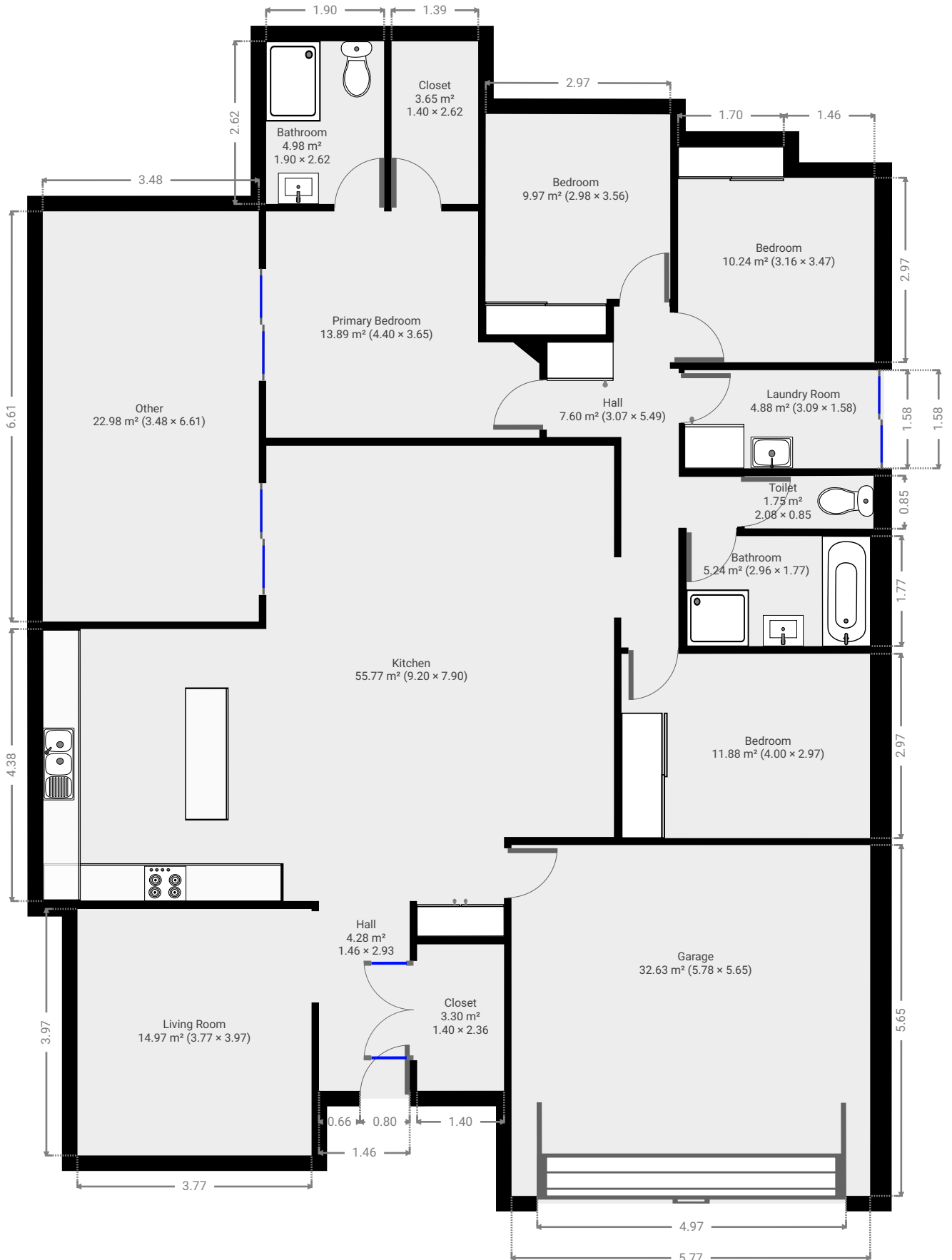
---

**Floors**

1

---

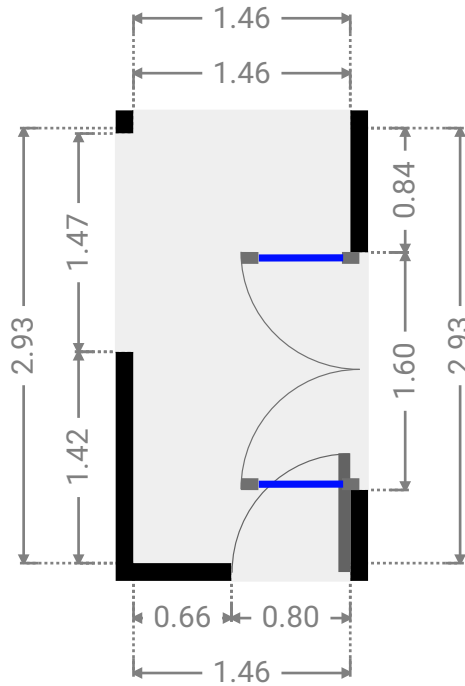
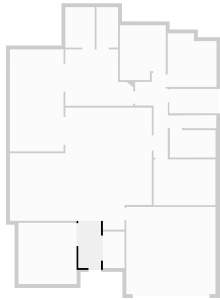
## ▼ Ground Floor



FLOORS: 1

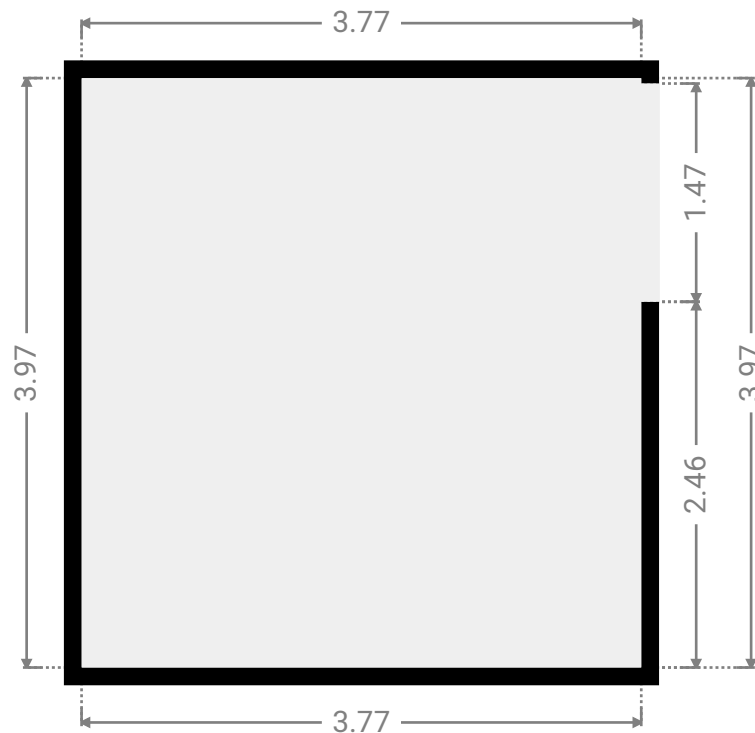
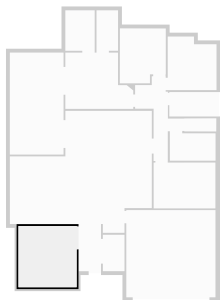
▼ **Hall**  
Ground Floor

WIDTH: 1.46 m • LENGTH: 2.93 m  
AREA: 4.28 m<sup>2</sup> • PERIMETER: 8.78 m



▼ **Living Room**  
Ground Floor

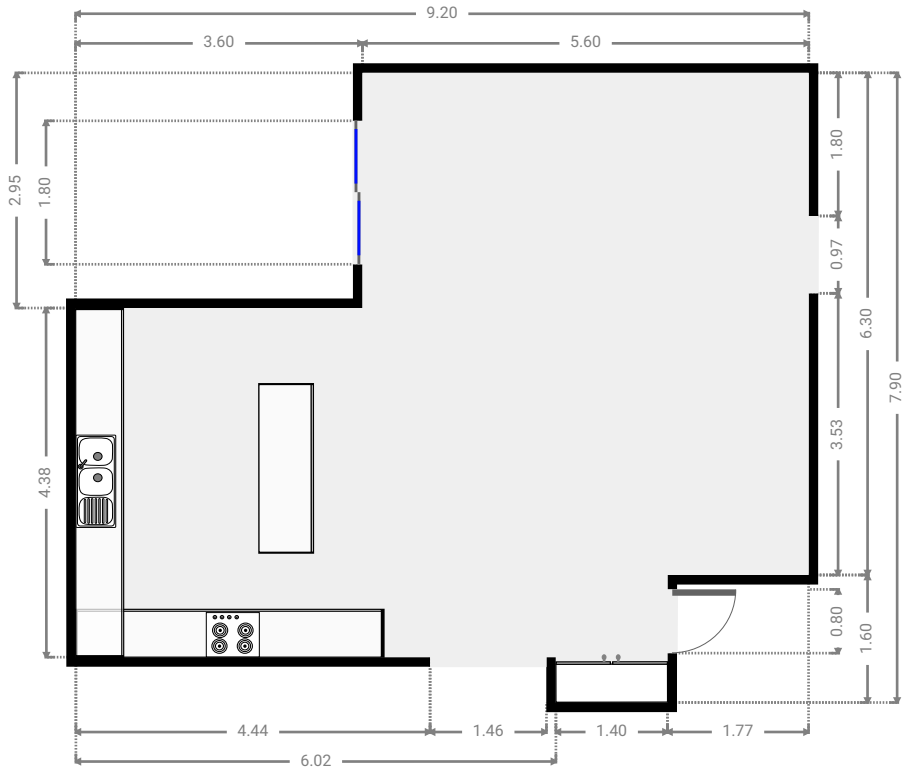
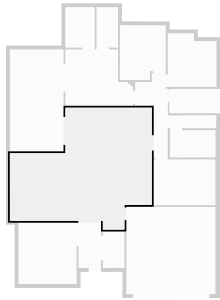
WIDTH: 3.77 m • LENGTH: 3.97 m  
AREA: 14.97 m<sup>2</sup> • PERIMETER: 15.48 m



FLOORS: 1

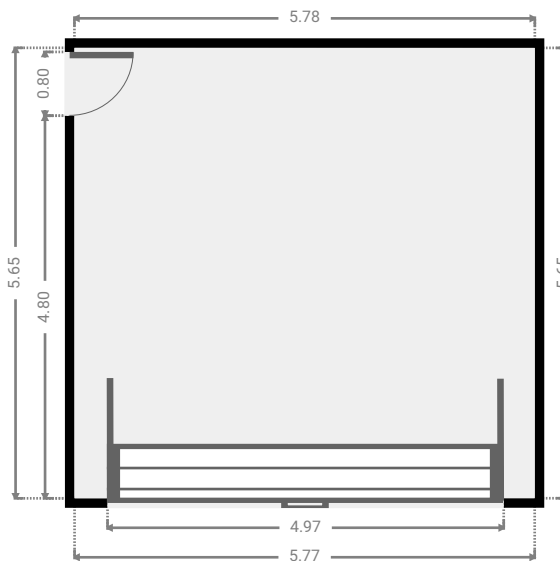
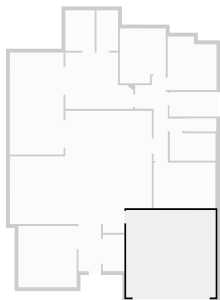
▼ Kitchen  
Ground Floor

WIDTH: 9.20 m • LENGTH: 7.90 m  
AREA: 55.77 m<sup>2</sup> • PERIMETER: 34.19 m



▼ Garage  
Ground Floor

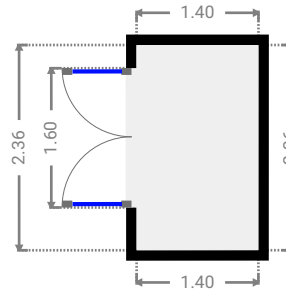
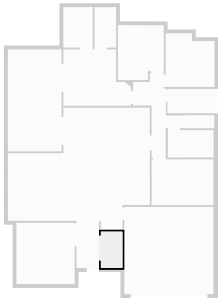
WIDTH: 5.78 m • LENGTH: 5.65 m  
AREA: 32.63 m<sup>2</sup> • PERIMETER: 22.85 m



FLOORS: 1

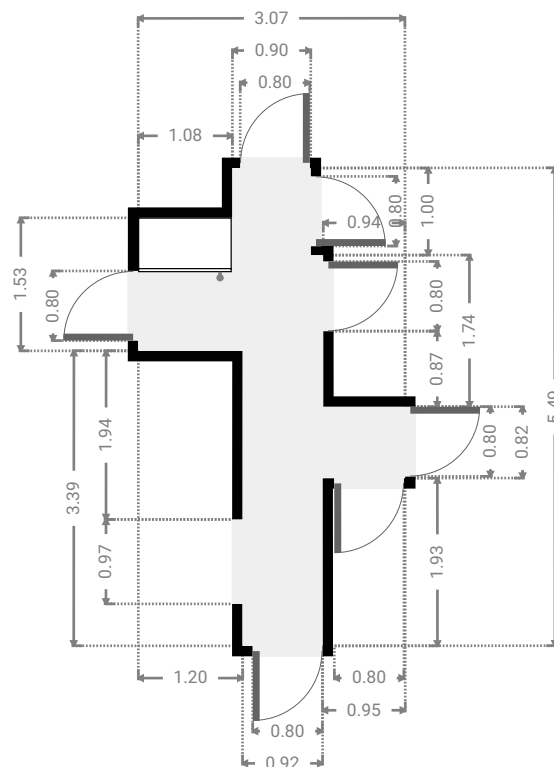
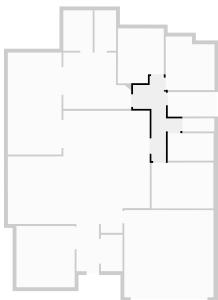
▼ Closet  
Ground Floor

WIDTH: 1.40 m • LENGTH: 2.36 m  
AREA: 3.30 m<sup>2</sup> • PERIMETER: 7.52 m



▼ Hall  
Ground Floor

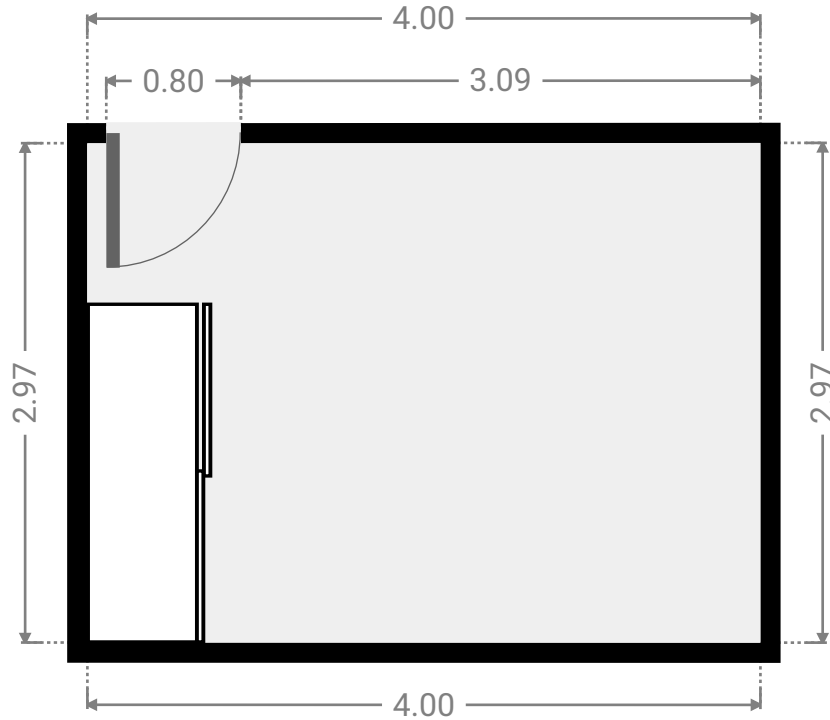
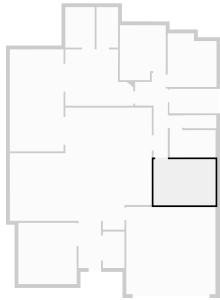
WIDTH: 3.07 m • LENGTH: 5.49 m  
AREA: 7.60 m<sup>2</sup> • PERIMETER: 17.11 m



FLOORS: 1

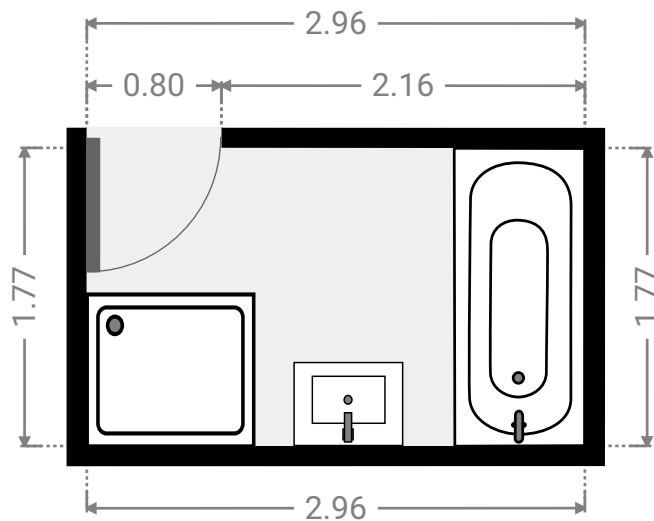
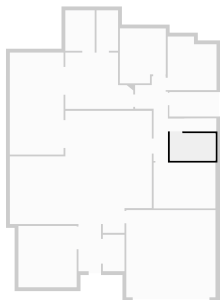
▼ **Bedroom**  
Ground Floor

WIDTH: 4.00 m • LENGTH: 2.97 m  
AREA: 11.88 m<sup>2</sup> • PERIMETER: 13.94 m



▼ **Bathroom**  
Ground Floor

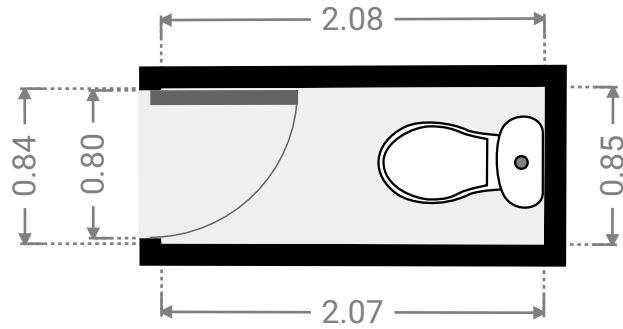
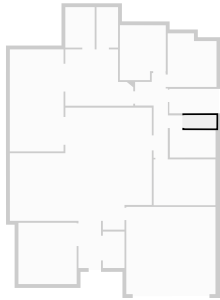
WIDTH: 2.96 m • LENGTH: 1.77 m  
AREA: 5.24 m<sup>2</sup> • PERIMETER: 9.46 m



FLOORS: 1

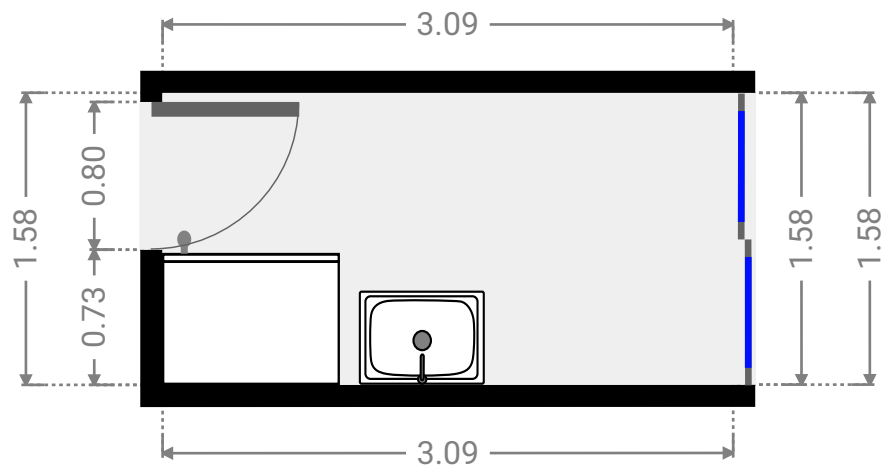
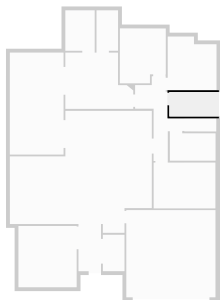
▼ Toilet  
Ground Floor

WIDTH: 2.08 m • LENGTH: 0.85 m  
AREA: 1.75 m<sup>2</sup> • PERIMETER: 5.84 m



▼ Laundry Room  
Ground Floor

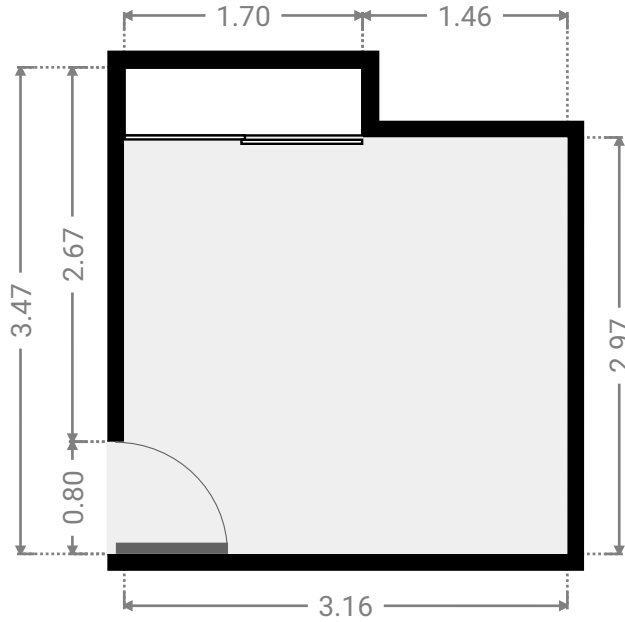
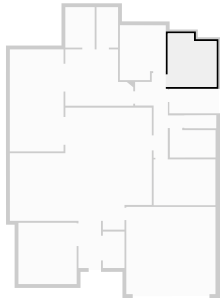
WIDTH: 3.09 m • LENGTH: 1.58 m  
AREA: 4.88 m<sup>2</sup> • PERIMETER: 9.34 m



FLOORS: 1

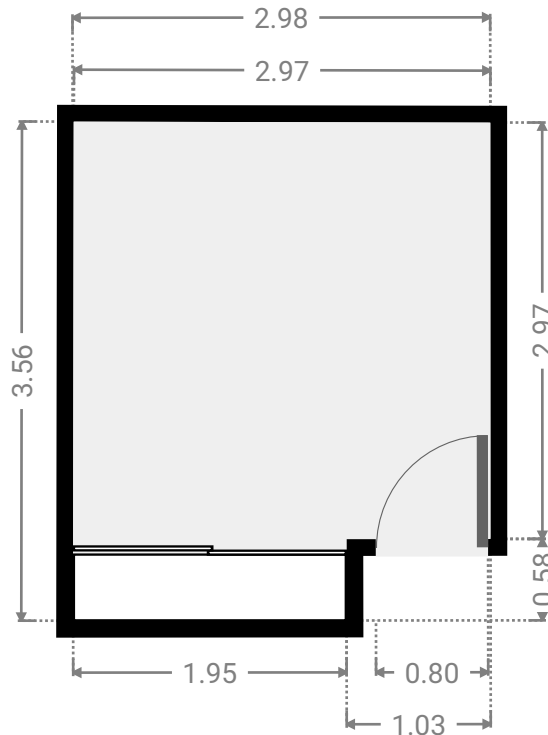
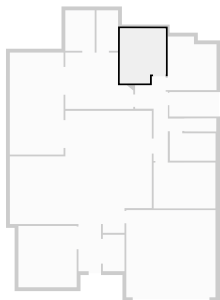
▼ **Bedroom**  
Ground Floor

WIDTH: 3.16 m • LENGTH: 3.47 m  
AREA: 10.24 m<sup>2</sup> • PERIMETER: 13.26 m



▼ **Bedroom**  
Ground Floor

WIDTH: 2.98 m • LENGTH: 3.56 m  
AREA: 9.97 m<sup>2</sup> • PERIMETER: 13.06 m

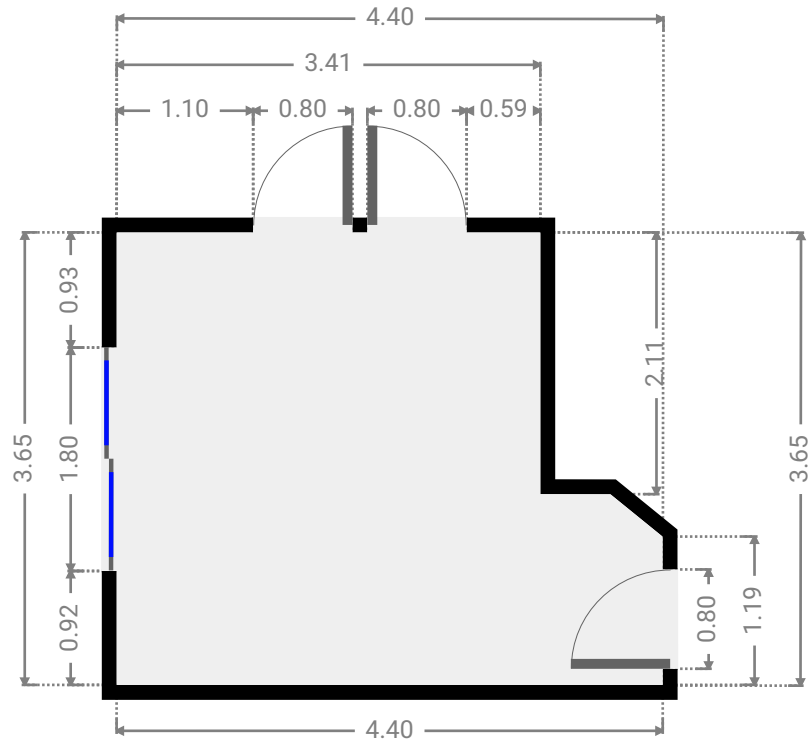
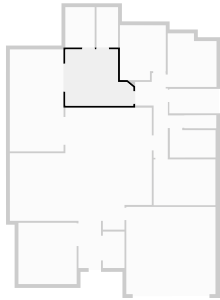




FLOORS: 1

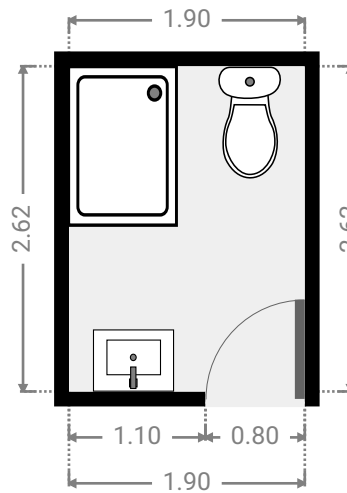
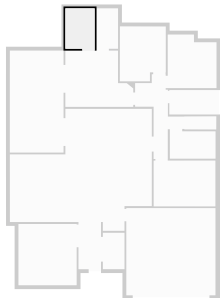
▼ **Primary Bedroom**  
Ground Floor

WIDTH: 4.40 m • LENGTH: 3.65 m  
AREA: 13.89 m<sup>2</sup> • PERIMETER: 15.87 m



▼ **Bathroom**  
Ground Floor

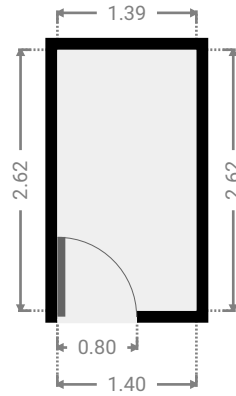
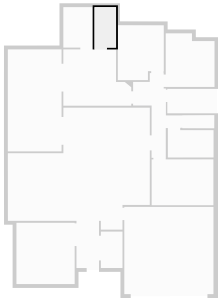
WIDTH: 1.90 m • LENGTH: 2.62 m  
AREA: 4.98 m<sup>2</sup> • PERIMETER: 9.04 m



FLOORS: 1

▼ **Closet**  
Ground Floor

WIDTH: 1.40 m • LENGTH: 2.62 m  
AREA: 3.65 m<sup>2</sup> • PERIMETER: 8.03 m



▼ **Other**  
Ground Floor

WIDTH: 3.48 m • LENGTH: 6.61 m  
AREA: 22.98 m<sup>2</sup> • PERIMETER: 20.17 m

