

# 60 Bronco Crescent

## Ground Floor



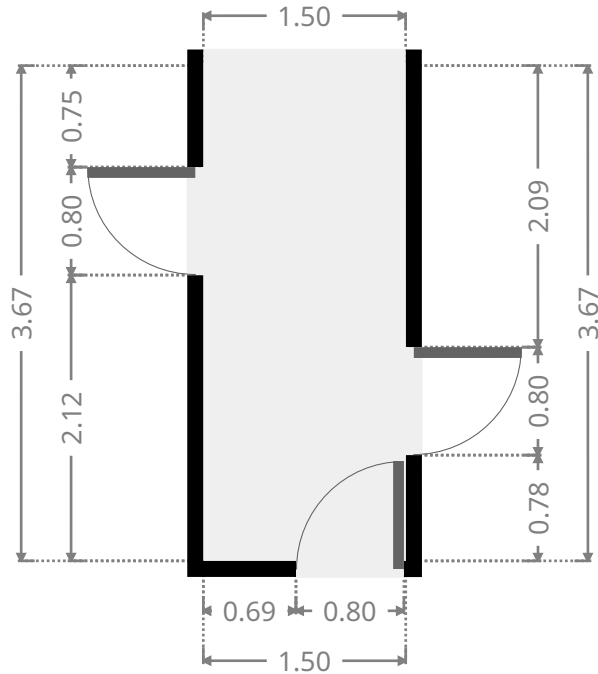
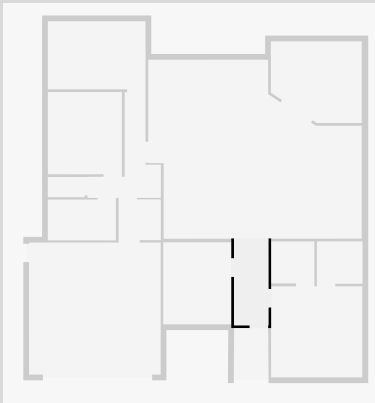
THIS FLOORPLAN IS PROVIDED WITHOUT WARRANTY OF ANY KIND. SENSOPIA DISCLAIMS ANY WARRANTY INCLUDING, WITHOUT LIMITATION, SATISFACTORY QUALITY OR ACCURACY OF DIMENSIONS.



# 60 Bronco Crescent

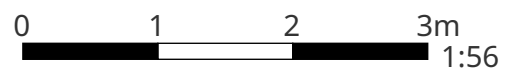
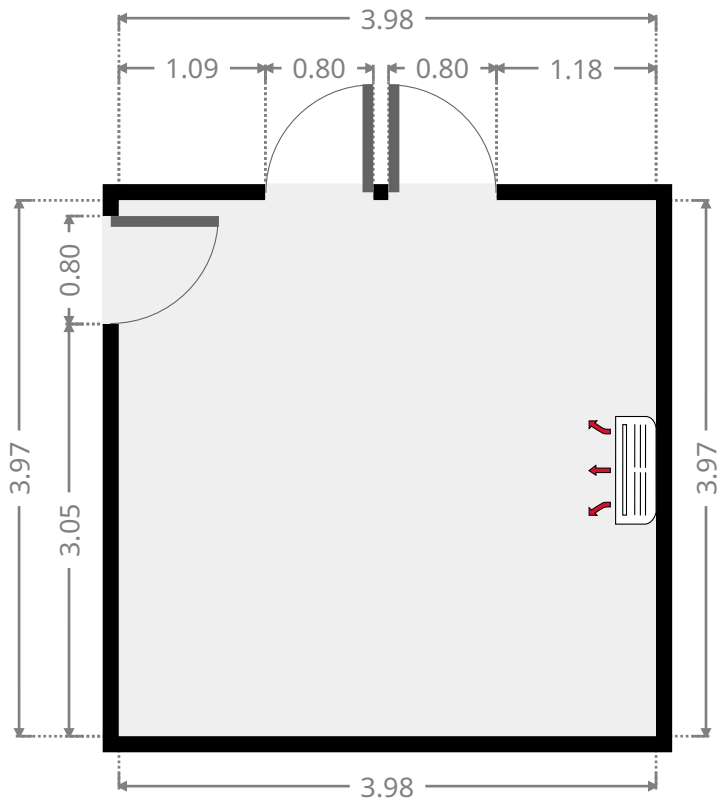
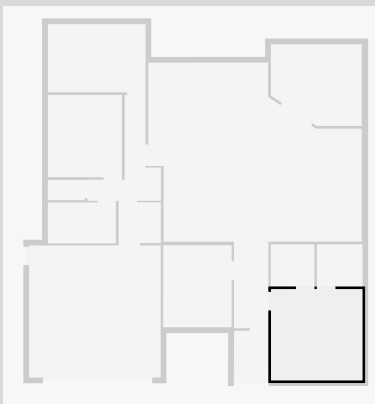
## Hall

Width: 1.50 m  
 Length: 3.67 m  
 Area: 5.50 m<sup>2</sup>  
 Perimeter: 10.34 m



## Master Bedroom

Width: 3.97 m  
 Length: 3.98 m  
 Area: 15.80 m<sup>2</sup>  
 Perimeter: 15.90 m

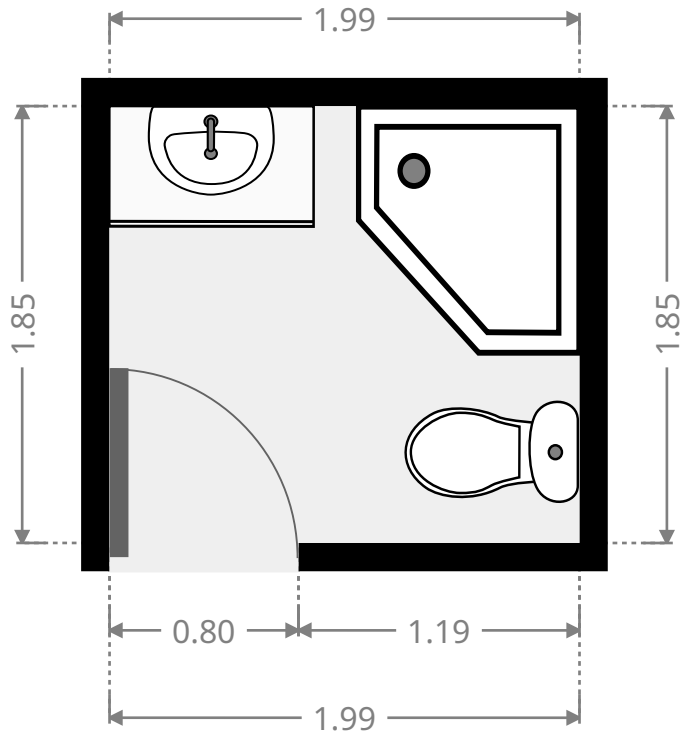
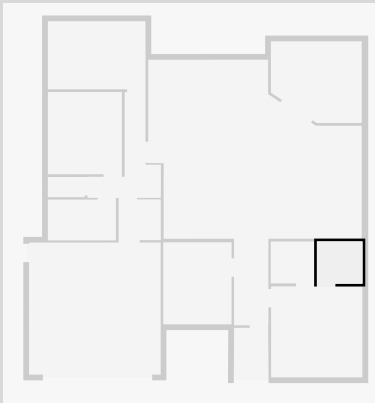


THIS FLOORPLAN IS PROVIDED WITHOUT WARRANTY OF ANY KIND. SENSOPIA DISCLAIMS ANY WARRANTY INCLUDING, WITHOUT LIMITATION, SATISFACTORY QUALITY OR ACCURACY OF DIMENSIONS.

# 60 Bronco Crescent

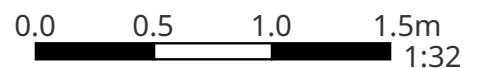
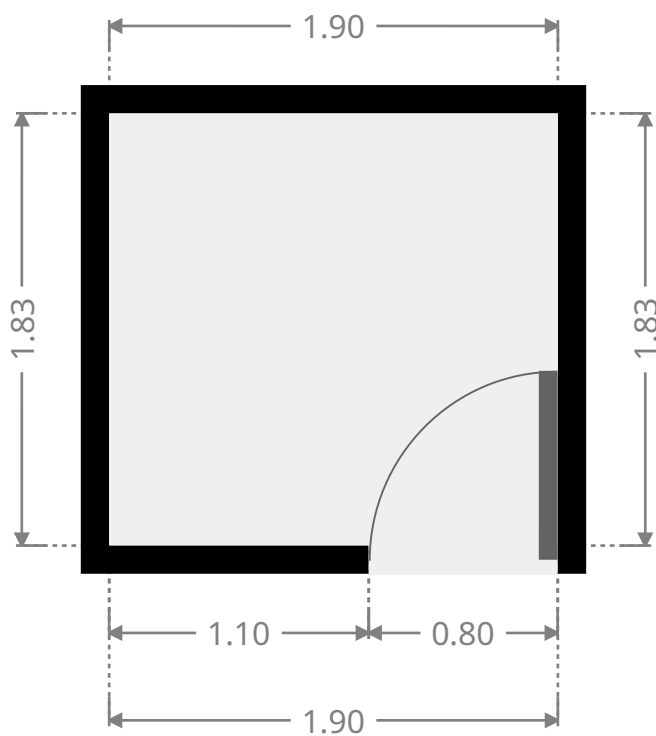
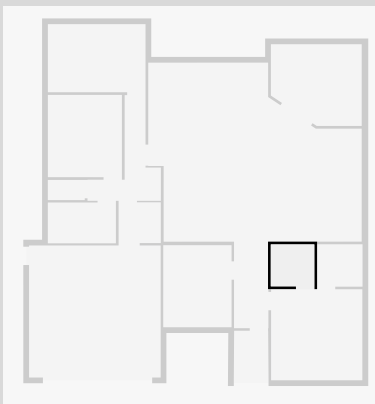
## Bathroom

Width: 1.85 m  
 Length: 1.99 m  
 Area: 3.68 m<sup>2</sup>  
 Perimeter: 7.68 m



## Closet

Width: 1.83 m  
 Length: 1.90 m  
 Area: 3.48 m<sup>2</sup>  
 Perimeter: 7.46 m

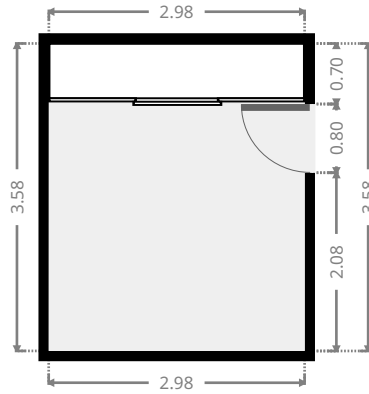
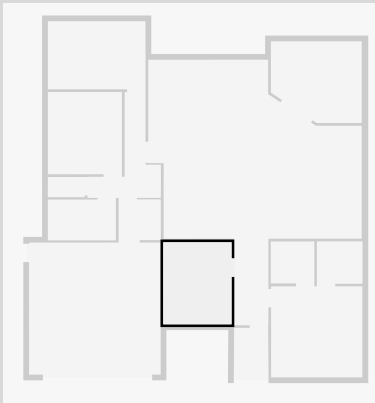


THIS FLOORPLAN IS PROVIDED WITHOUT WARRANTY OF ANY KIND. SENSOPIA DISCLAIMS ANY WARRANTY INCLUDING, WITHOUT LIMITATION, SATISFACTORY QUALITY OR ACCURACY OF DIMENSIONS.

# 60 Bronco Crescent

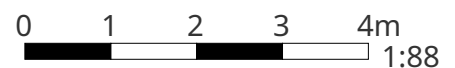
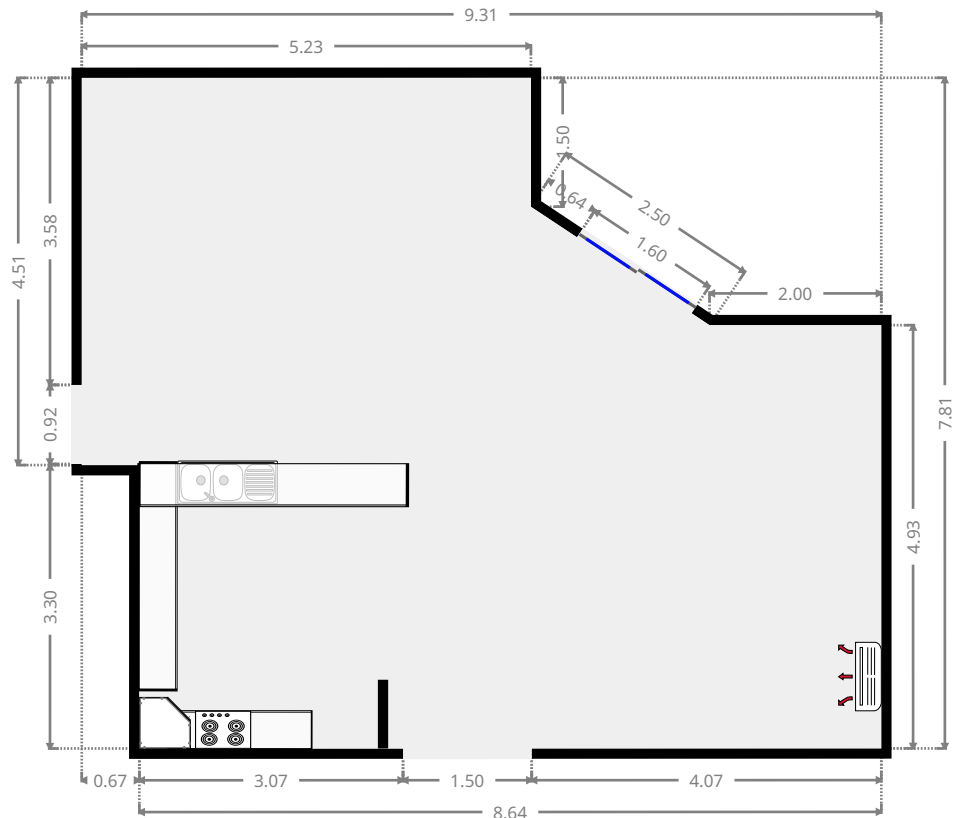
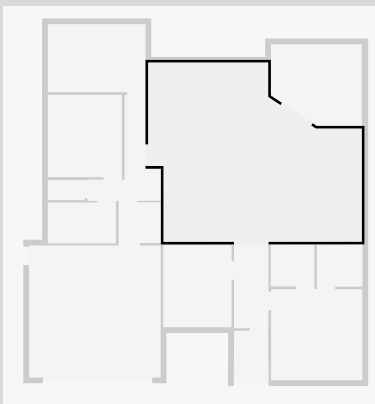
## Bedroom

Width: 2.98 m  
 Length: 3.58 m  
 Area: 10.67 m<sup>2</sup>  
 Perimeter: 13.12 m



## Kitchen/Living/Dining

Width: 7.81 m  
 Length: 9.31 m  
 Area: 60.17 m<sup>2</sup>  
 Perimeter: 33.27 m

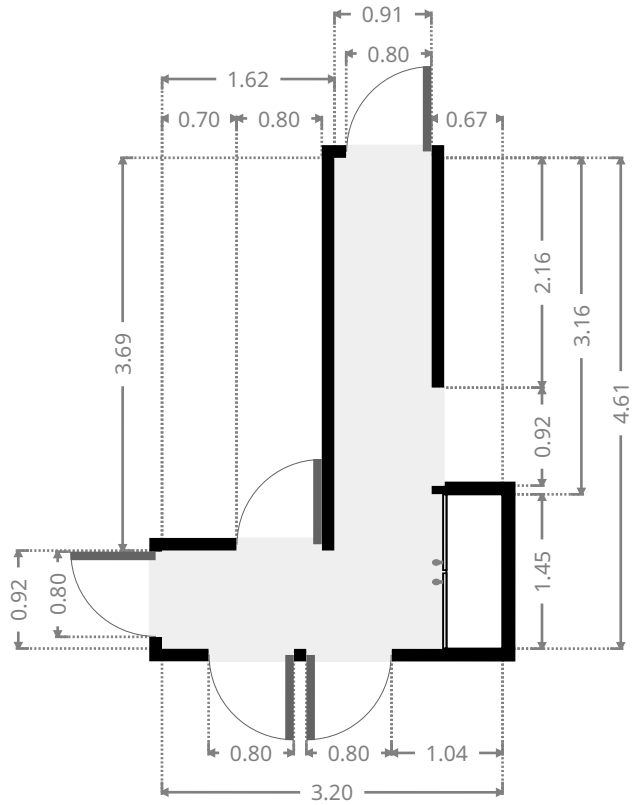
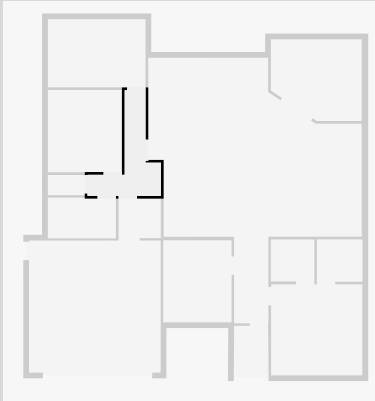


THIS FLOORPLAN IS PROVIDED WITHOUT WARRANTY OF ANY KIND. SENSOPIA DISCLAIMS ANY WARRANTY INCLUDING, WITHOUT LIMITATION, SATISFACTORY QUALITY OR ACCURACY OF DIMENSIONS.

# 60 Bronco Crescent

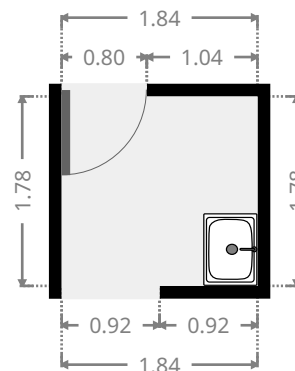
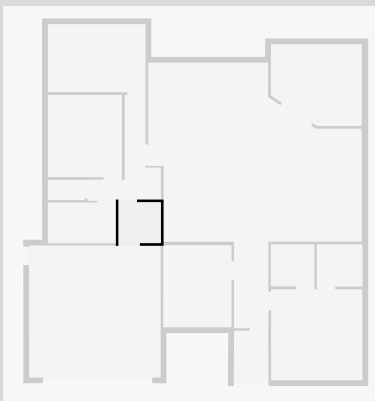
## Hall

Width: 3.20 m  
 Length: 4.61 m  
 Area: 6.66 m<sup>2</sup>  
 Perimeter: 15.62 m



## Laundry Room

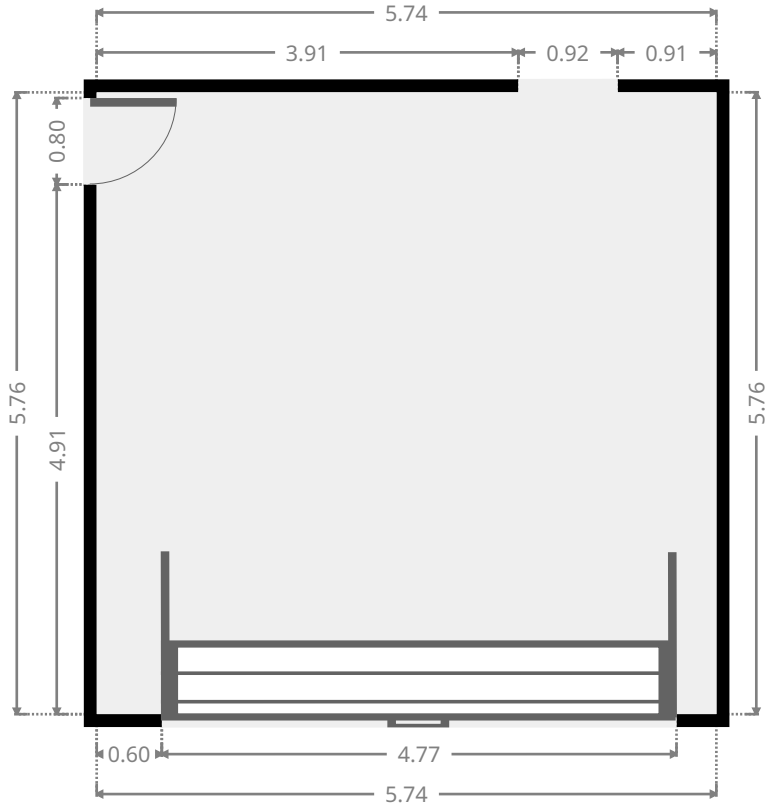
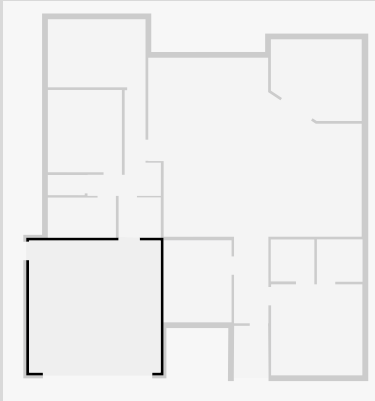
Width: 1.78 m  
 Length: 1.84 m  
 Area: 3.27 m<sup>2</sup>  
 Perimeter: 7.24 m



# 60 Bronco Crescent

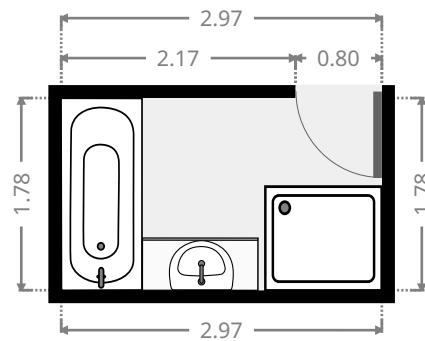
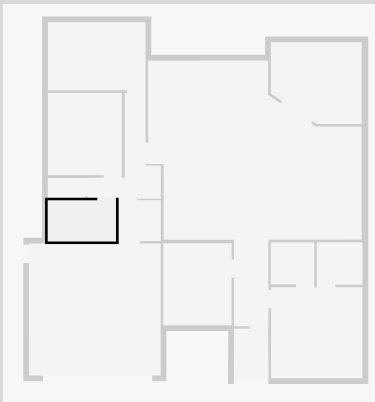
## Garage

Width: 5.74 m  
 Length: 5.76 m  
 Area: 33.06 m<sup>2</sup>  
 Perimeter: 23.00 m



## Bathroom

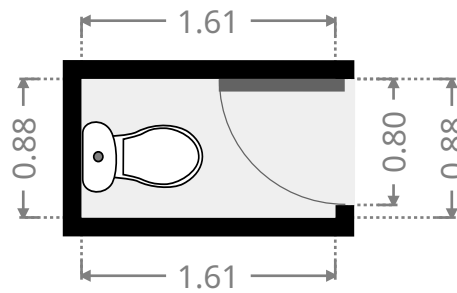
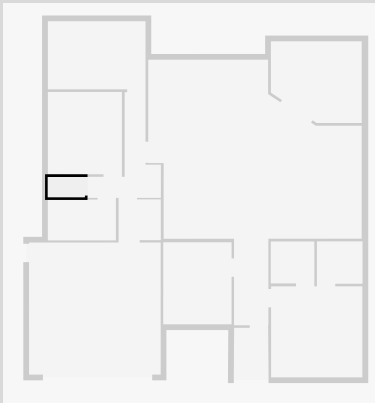
Width: 1.78 m  
 Length: 2.97 m  
 Area: 5.29 m<sup>2</sup>  
 Perimeter: 9.50 m



# 60 Bronco Crescent

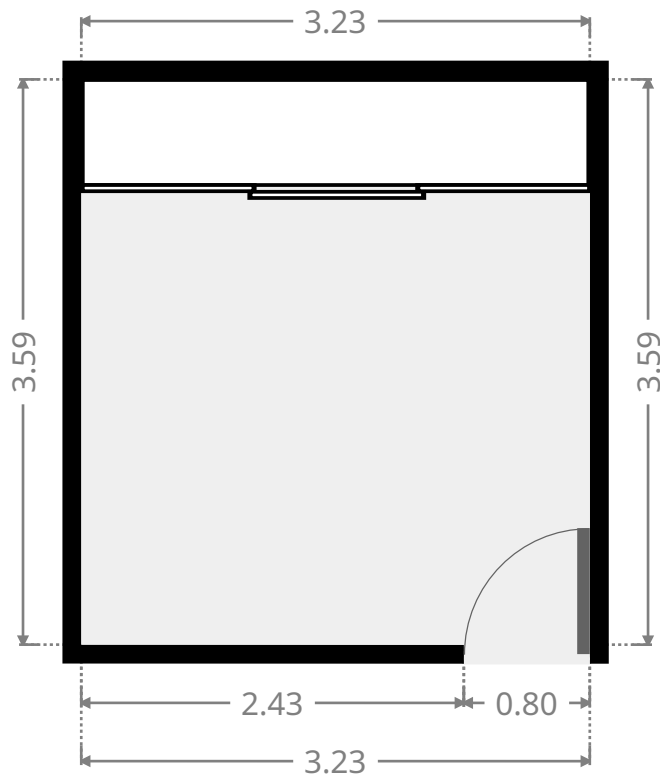
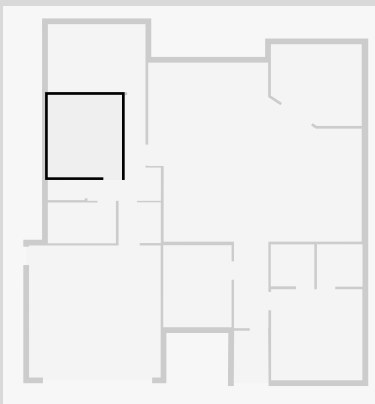
## Toilet / Half Bath

Width: 0.88 m  
Length: 1.61 m  
Area: 1.42 m<sup>2</sup>  
Perimeter: 4.98 m



## Bedroom

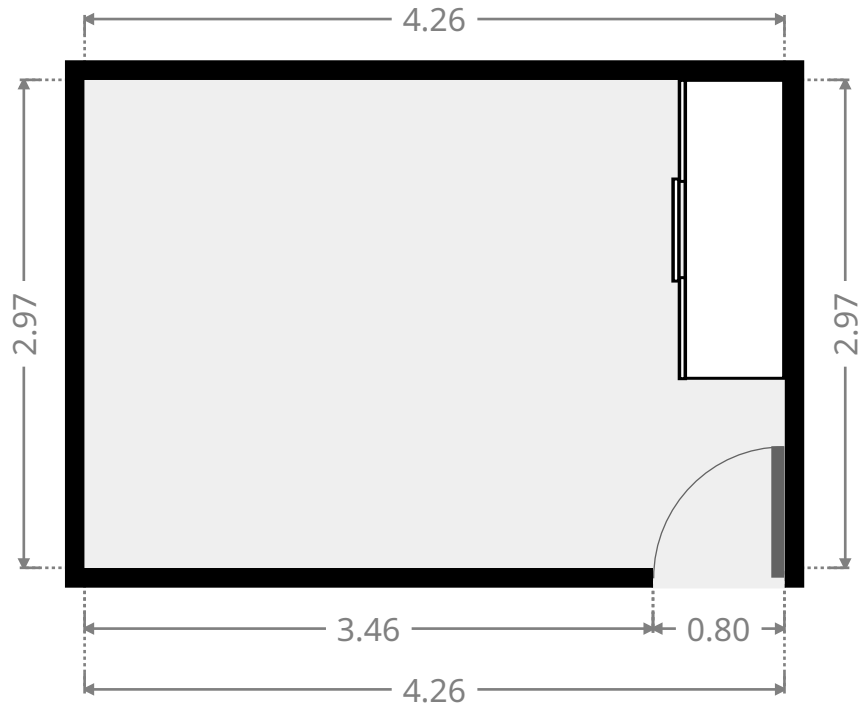
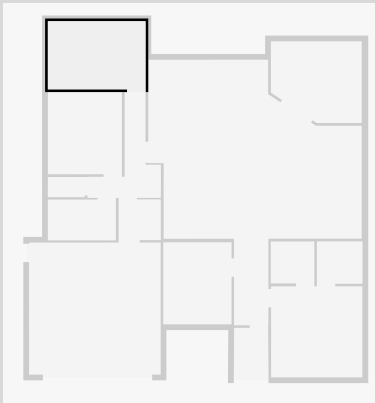
Width: 3.23 m  
Length: 3.59 m  
Area: 11.60 m<sup>2</sup>  
Perimeter: 13.64 m



# 60 Bronco Crescent

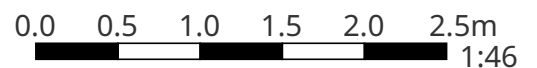
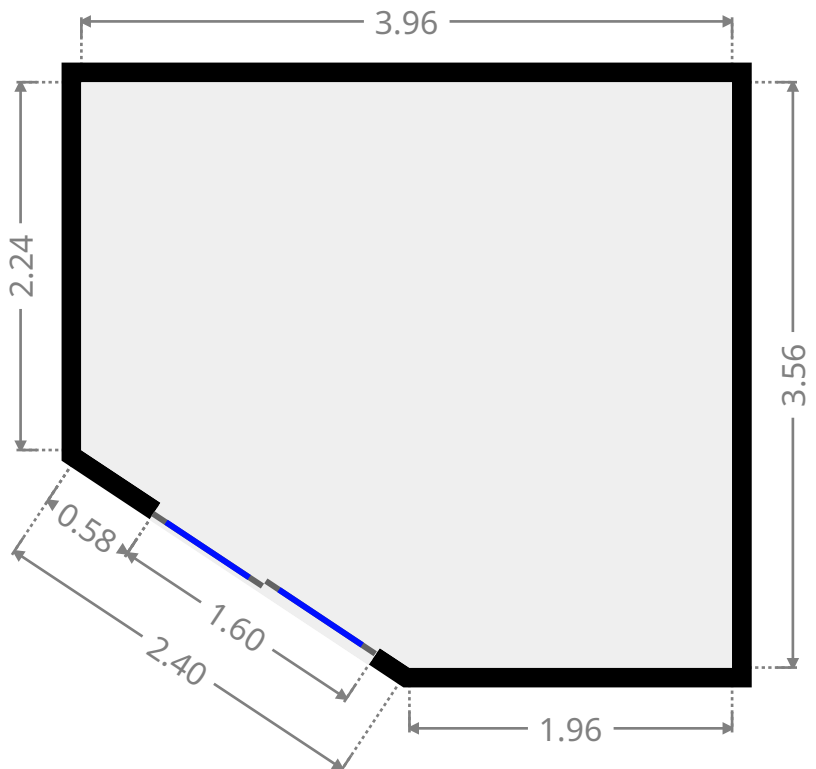
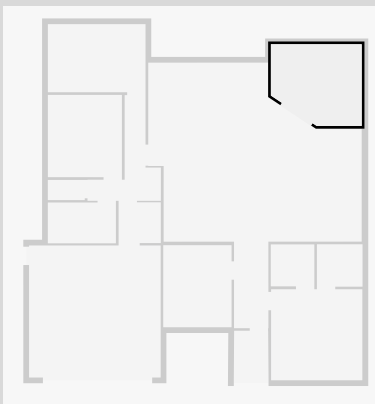
## Bedroom

Width: 2.97 m  
 Length: 4.26 m  
 Area: 12.65 m<sup>2</sup>  
 Perimeter: 14.46 m



## Outdoor Area

Width: 3.56 m  
 Length: 3.96 m  
 Area: 12.79 m<sup>2</sup>  
 Perimeter: 14.12 m



THIS FLOORPLAN IS PROVIDED WITHOUT WARRANTY OF ANY KIND. SENSOPIA DISCLAIMS ANY WARRANTY INCLUDING, WITHOUT LIMITATION, SATISFACTORY QUALITY OR ACCURACY OF DIMENSIONS.



# 60 Bronco Crescent

## Hall

Width: 1.52 m  
Length: 2.17 m  
Area: 3.24 m<sup>2</sup>  
Perimeter: 7.31 m

