

6 Sturt Court

SUBMITTED BY

Ray White Rockhampton Casey
stockers@cqoz.com

CREATED ON

2022-03-21

Floors

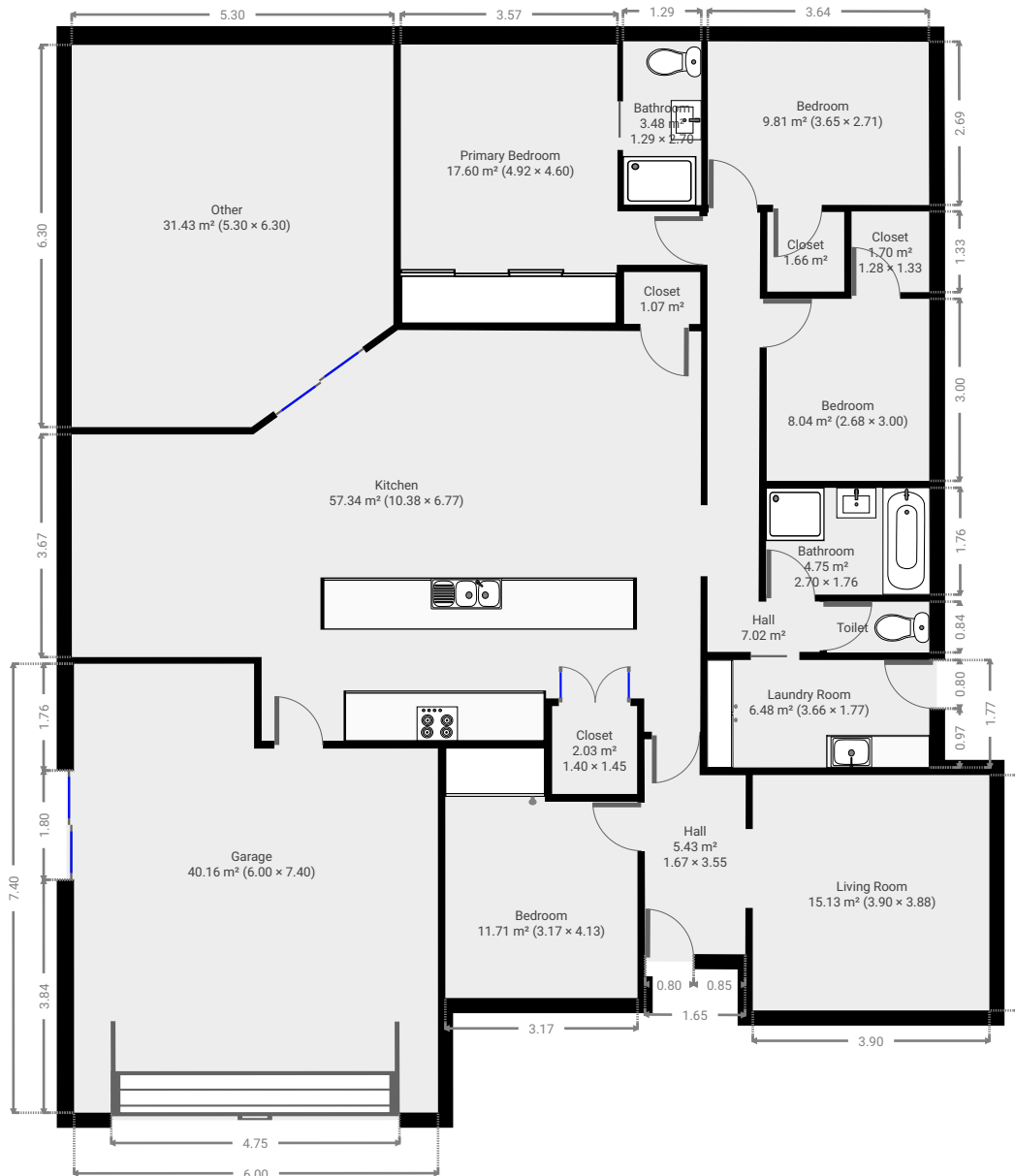
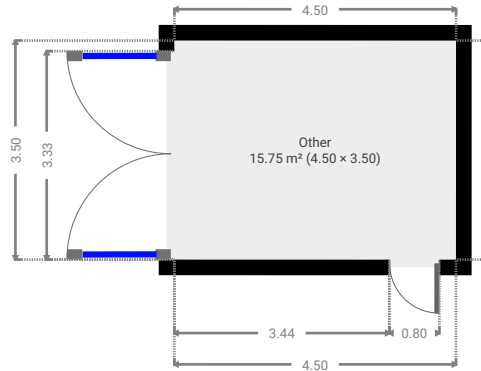
1

6 Sturt Court

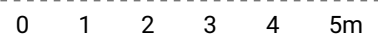
FLOORS: 1



▼ Ground Floor



THIS FLOORPLAN IS PROVIDED WITHOUT WARRANTY OF ANY KIND. SENSOPIA DISCLAIMS ANY WARRANTY INCLUDING, WITHOUT LIMITATION, SATISFACTORY QUALITY OR ACCURACY OF DIMENSIONS.

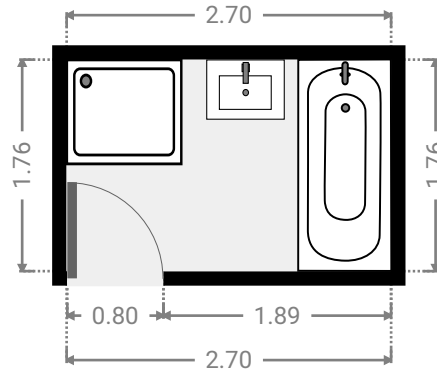
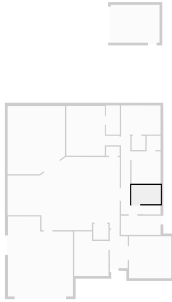


6 Sturt Court

FLOORS: 1

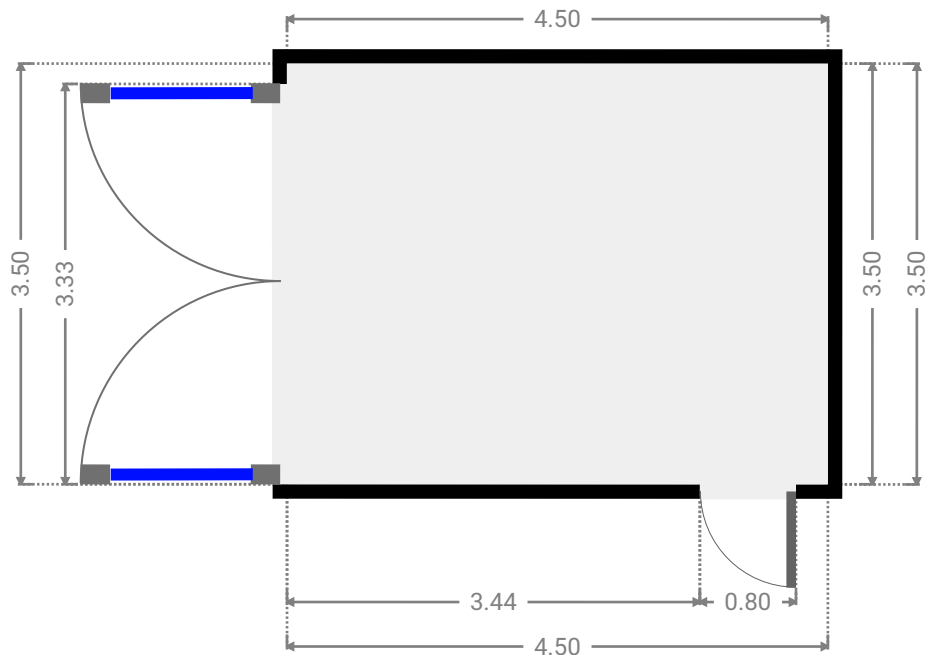
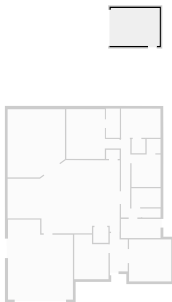
▼ Bathroom Ground Floor

WIDTH: 2.70 m • LENGTH: 1.76 m
AREA: 4.75 m² • PERIMETER: 8.92 m



▼ Other Ground Floor

WIDTH: 4.50 m • LENGTH: 3.50 m
AREA: 15.75 m² • PERIMETER: 16.00 m



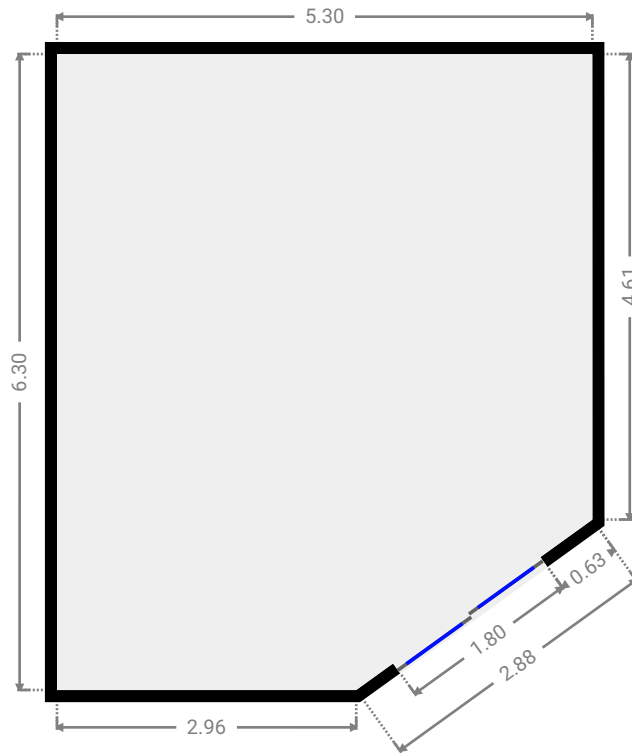
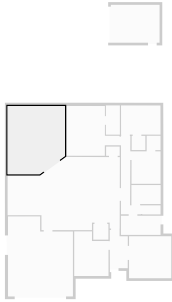
6 Sturt Court

FLOORS: 1



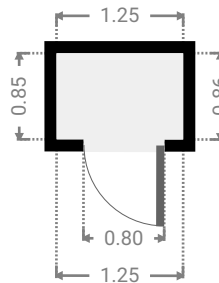
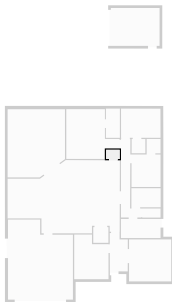
▼ Other Ground Floor

WIDTH: 5.30 m • LENGTH: 6.30 m
AREA: 31.43 m² • PERIMETER: 22.06 m



▼ Closet Ground Floor

WIDTH: 1.25 m • LENGTH: 0.86 m
AREA: 1.07 m² • PERIMETER: 4.22 m

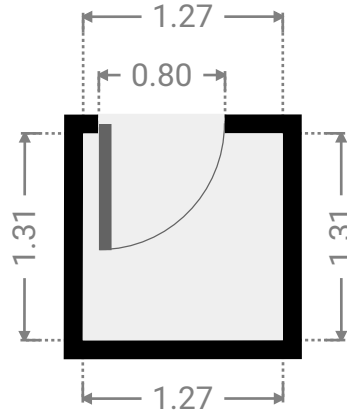
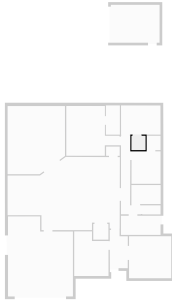


6 Sturt Court

FLOORS: 1

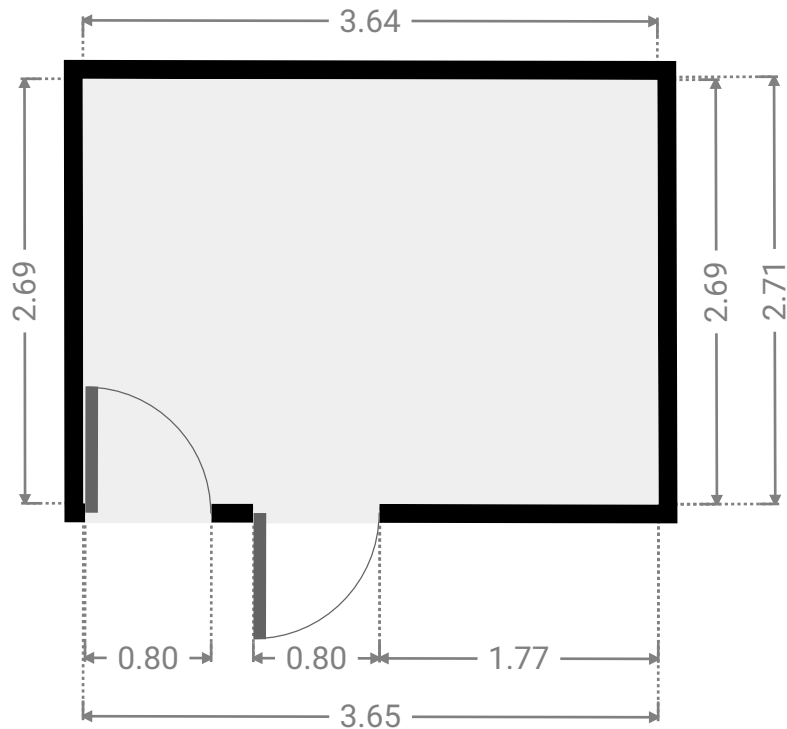
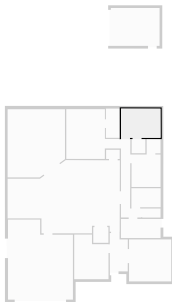
▼ Closet Ground Floor

WIDTH: 1.27 m • LENGTH: 1.31 m
AREA: 1.66 m² • PERIMETER: 5.16 m



▼ Bedroom Ground Floor

WIDTH: 3.65 m • LENGTH: 2.71 m
AREA: 9.81 m² • PERIMETER: 12.67 m

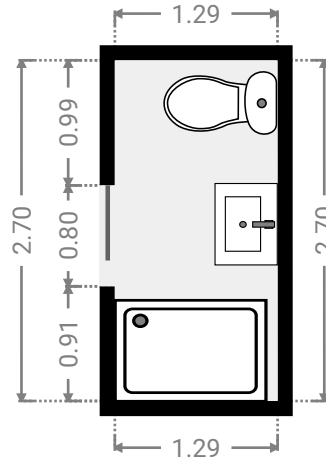
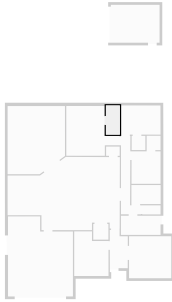


6 Sturt Court

FLOORS: 1

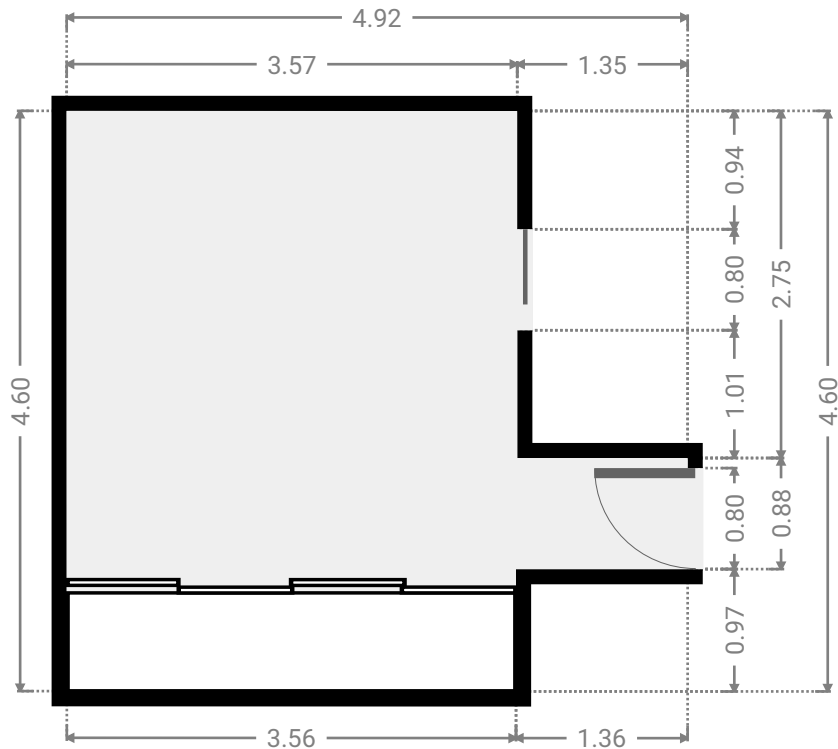
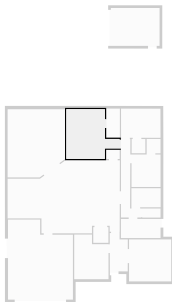
▼ Bathroom Ground Floor

WIDTH: 1.29 m • LENGTH: 2.70 m
AREA: 3.48 m² • PERIMETER: 7.98 m



▼ Primary Bedroom Ground Floor

WIDTH: 4.92 m • LENGTH: 4.60 m
AREA: 17.60 m² • PERIMETER: 19.04 m

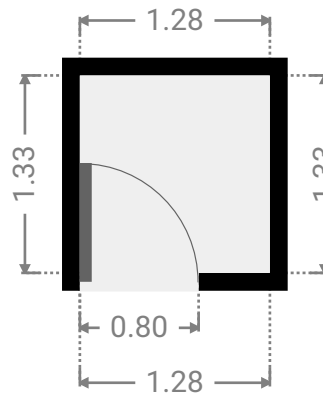
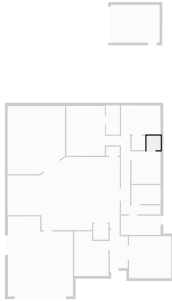


6 Sturt Court

FLOORS: 1

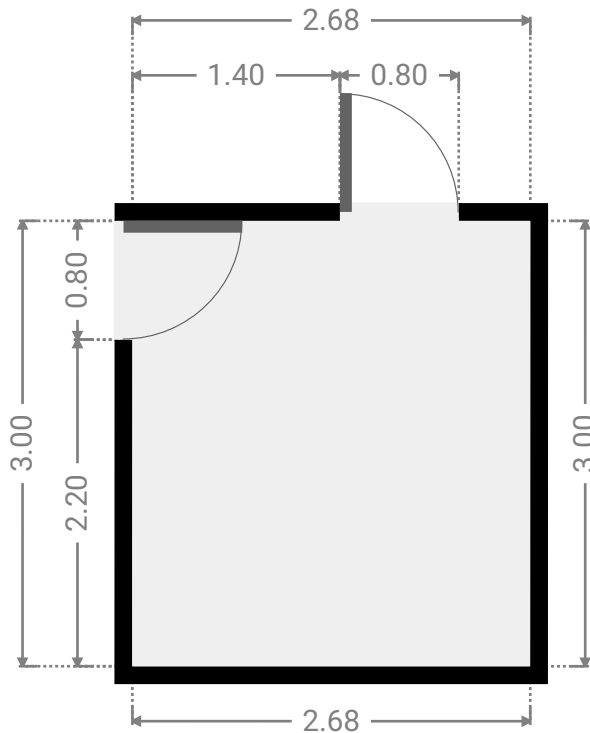
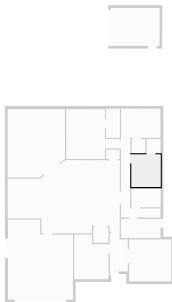
▼ Closet Ground Floor

WIDTH: 1.28 m • LENGTH: 1.33 m
AREA: 1.70 m² • PERIMETER: 5.22 m



▼ Bedroom Ground Floor

WIDTH: 2.68 m • LENGTH: 3.00 m
AREA: 8.04 m² • PERIMETER: 11.36 m



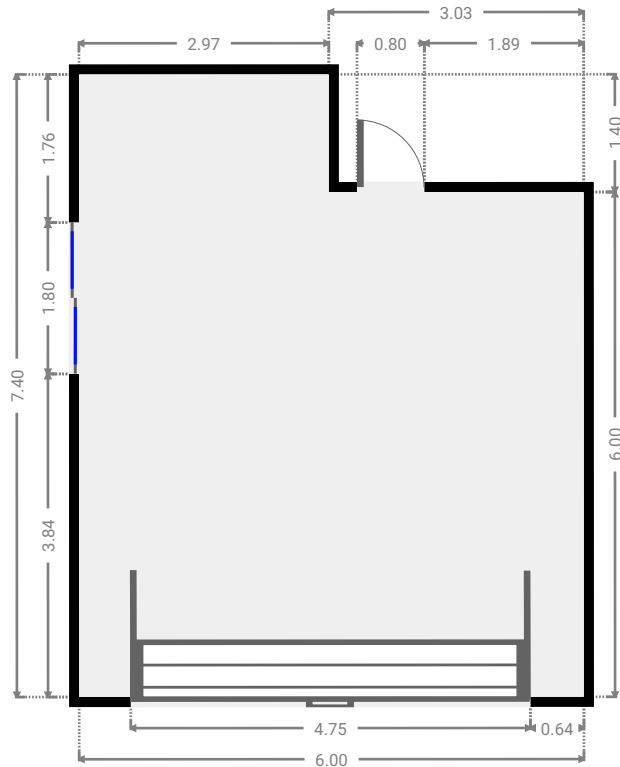
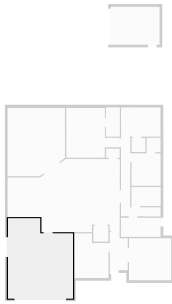
6 Sturt Court

FLOORS: 1



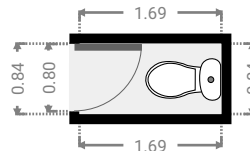
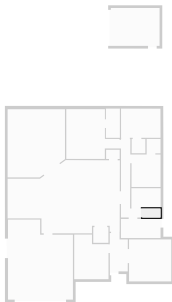
▼ Garage Ground Floor

WIDTH: 6.00 m • LENGTH: 7.40 m
AREA: 40.16 m² • PERIMETER: 26.80 m



▼ Toilet Ground Floor

WIDTH: 1.69 m • LENGTH: 0.84 m
AREA: 1.41 m² • PERIMETER: 5.05 m



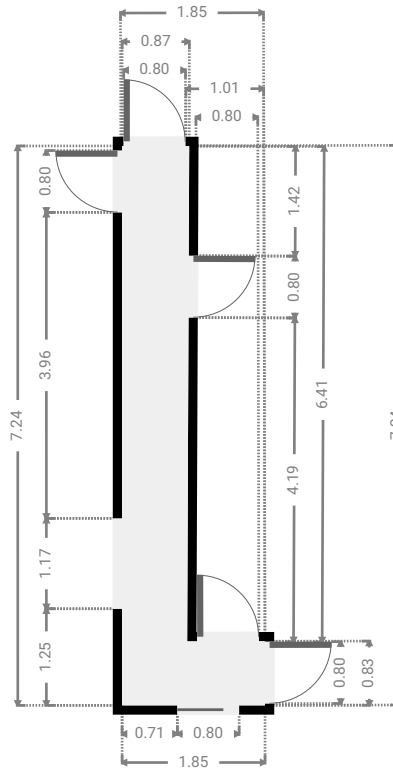
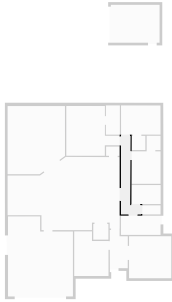
6 Sturt Court

FLOORS: 1



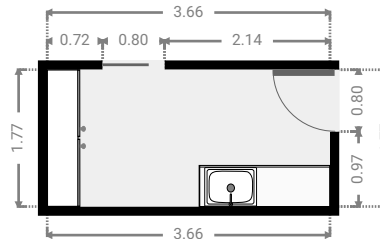
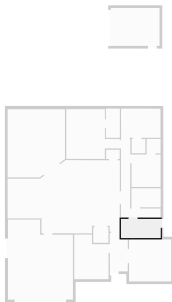
▼ Hall Ground Floor

WIDTH: 1.85 m • LENGTH: 7.24 m
AREA: 7.02 m² • PERIMETER: 18.21 m



▼ Laundry Room Ground Floor

WIDTH: 3.66 m • LENGTH: 1.77 m
AREA: 6.48 m² • PERIMETER: 10.86 m

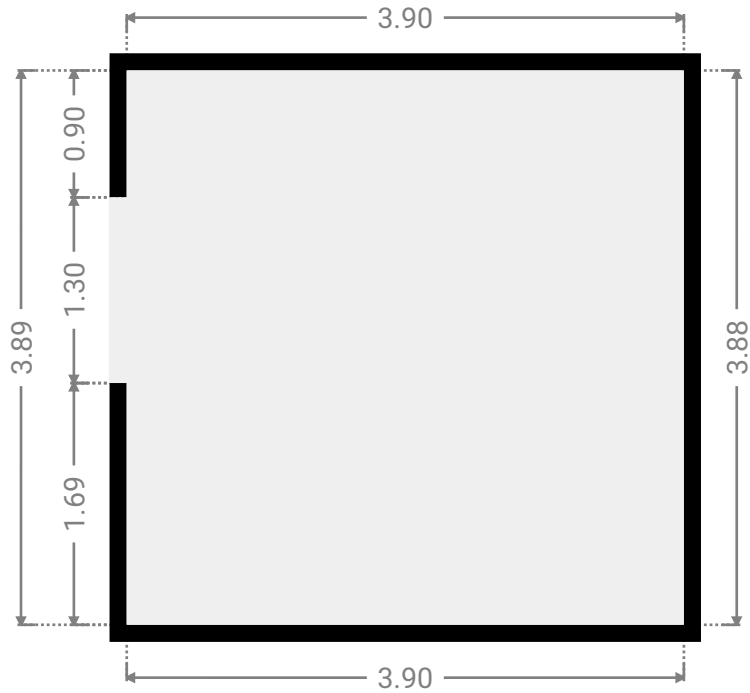
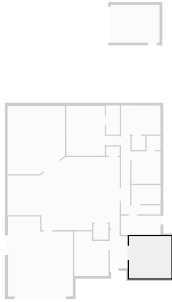


6 Sturt Court

FLOORS: 1

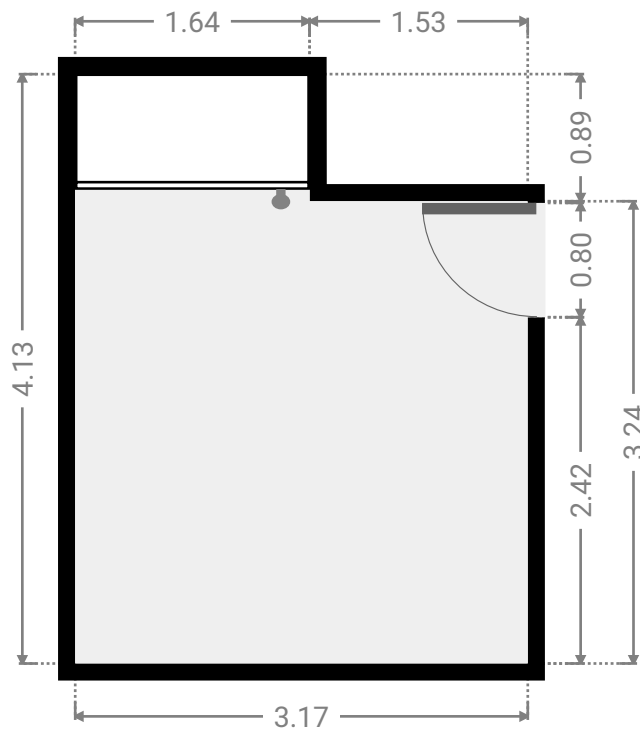
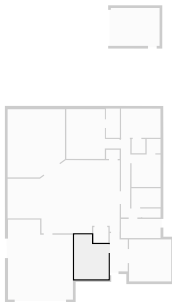
▼ Living Room Ground Floor

WIDTH: 3.90 m • LENGTH: 3.88 m
AREA: 15.13 m² • PERIMETER: 15.56 m



▼ Bedroom Ground Floor

WIDTH: 3.17 m • LENGTH: 4.13 m
AREA: 11.71 m² • PERIMETER: 14.59 m

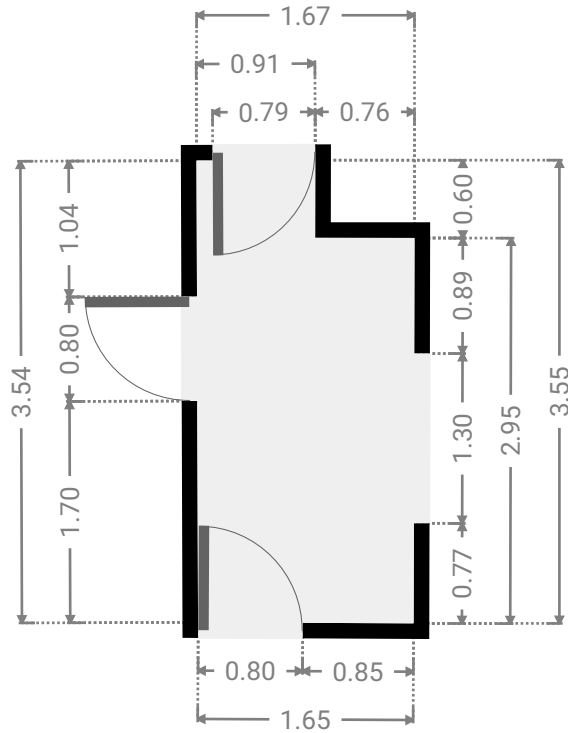
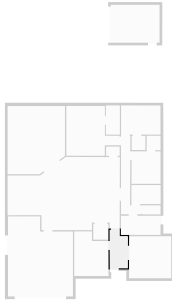


6 Sturt Court

FLOORS: 1

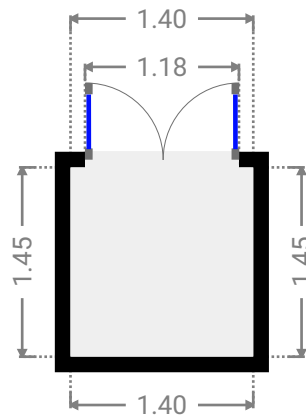
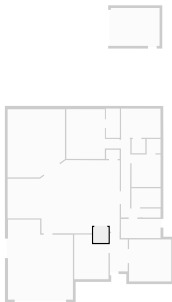
▼ Hall Ground Floor

WIDTH: 1.67 m • LENGTH: 3.55 m
AREA: 5.43 m² • PERIMETER: 10.40 m



▼ Closet Ground Floor

WIDTH: 1.40 m • LENGTH: 1.45 m
AREA: 2.03 m² • PERIMETER: 5.70 m



6 Sturt Court

FLOORS: 1

▼ Kitchen Ground Floor

WIDTH: 10.38 m • LENGTH: 6.77 m
AREA: 57.34 m² • PERIMETER: 34.19 m

