

6 Standish Street

SUBMITTED BY

Ray White Rockhampton Casey
stockers@cqoz.com

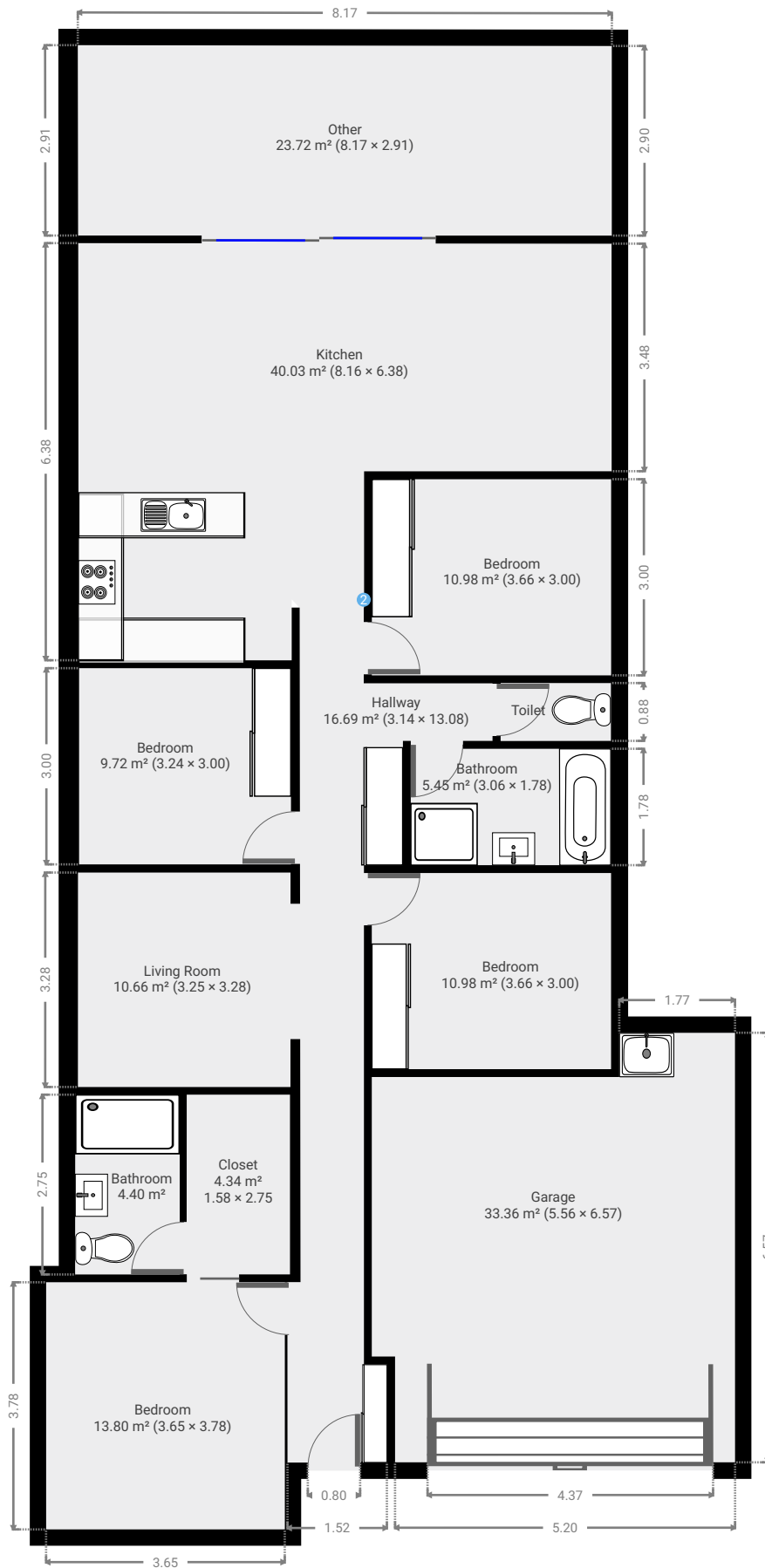
CREATED ON

2022-02-09

Floors

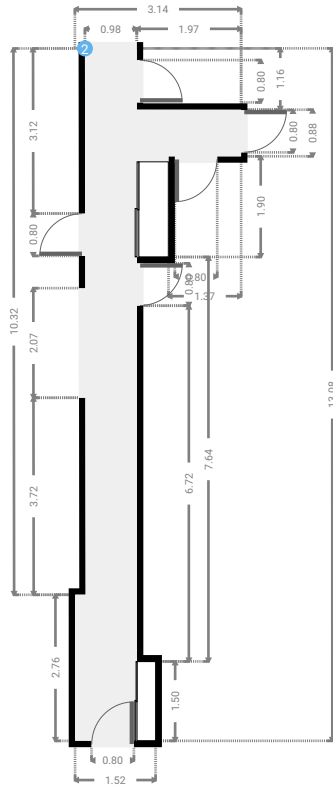
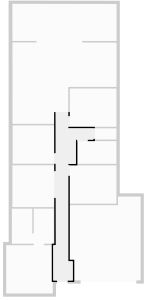
1

▼ Ground Floor



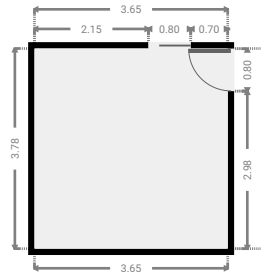
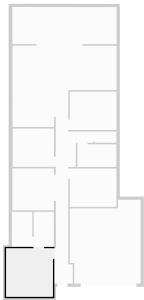
▼ **Hallway**
Ground Floor

WIDTH: 3.14 m • LENGTH: 13.08 m
AREA: 16.69 m² • PERIMETER: 33.14 m



▼ **Bedroom**
Ground Floor

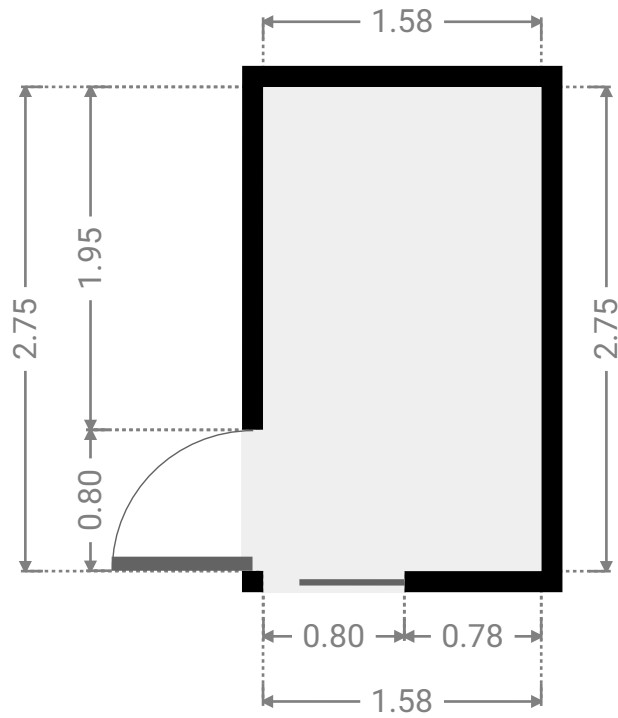
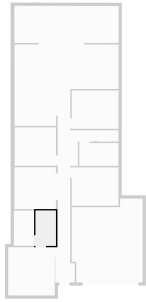
WIDTH: 3.65 m • LENGTH: 3.78 m
AREA: 13.80 m² • PERIMETER: 14.86 m



FLOORS: 1

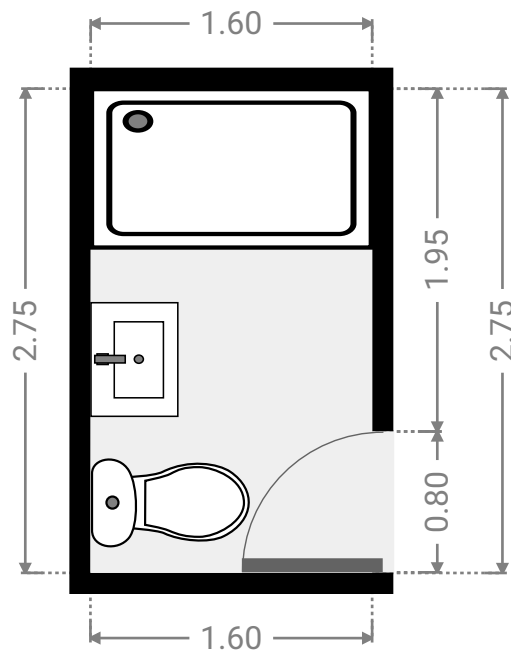
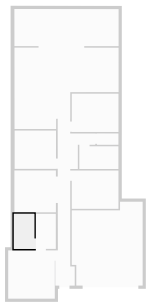
▼ **Closet**
Ground Floor

WIDTH: 1.58 m • LENGTH: 2.75 m
AREA: 4.34 m² • PERIMETER: 8.66 m



▼ **Bathroom**
Ground Floor

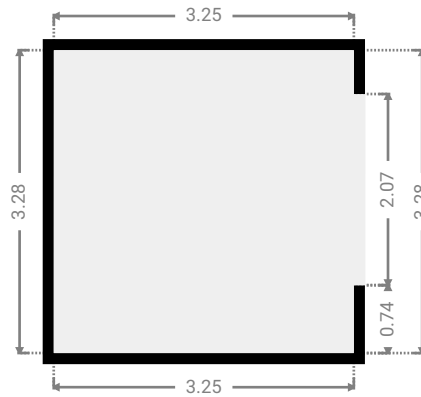
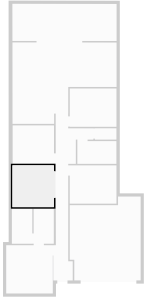
WIDTH: 1.60 m • LENGTH: 2.75 m
AREA: 4.40 m² • PERIMETER: 8.70 m



FLOORS: 1

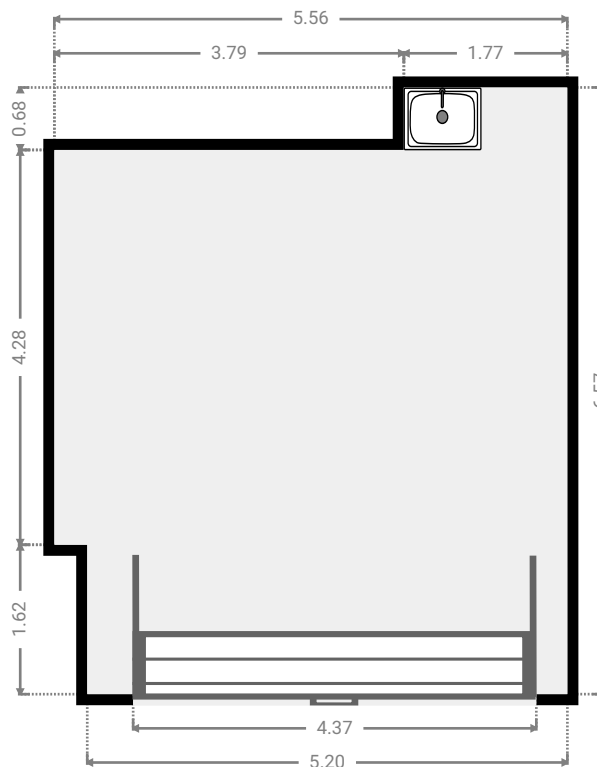
▼ Living Room
Ground Floor

WIDTH: 3.25 m • LENGTH: 3.28 m
AREA: 10.66 m² • PERIMETER: 13.06 m



▼ Garage
Ground Floor

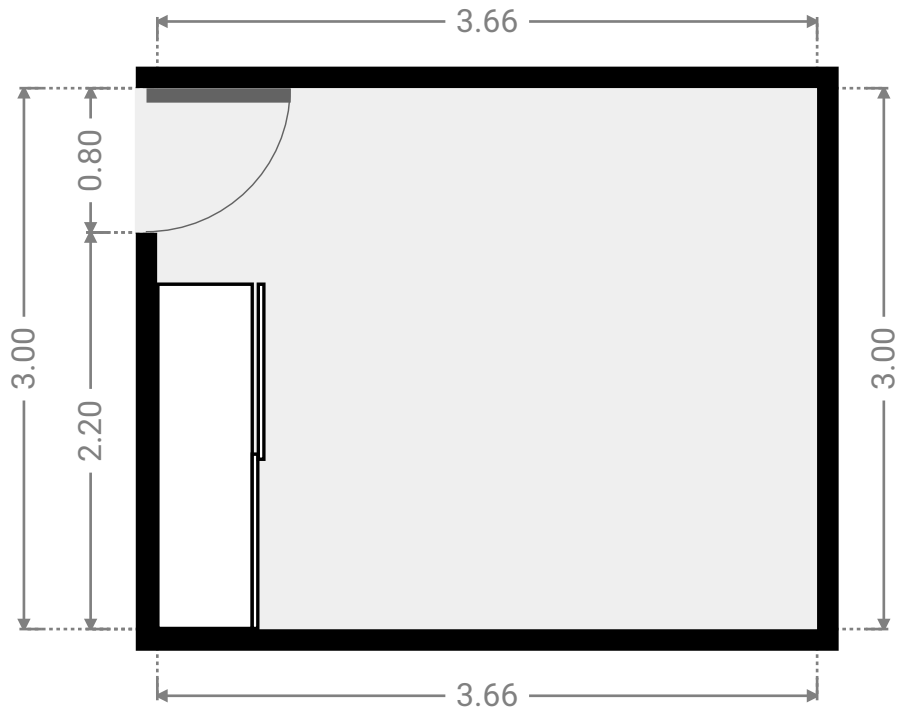
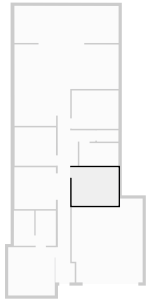
WIDTH: 5.56 m • LENGTH: 6.57 m
AREA: 33.36 m² • PERIMETER: 24.25 m



FLOORS: 1

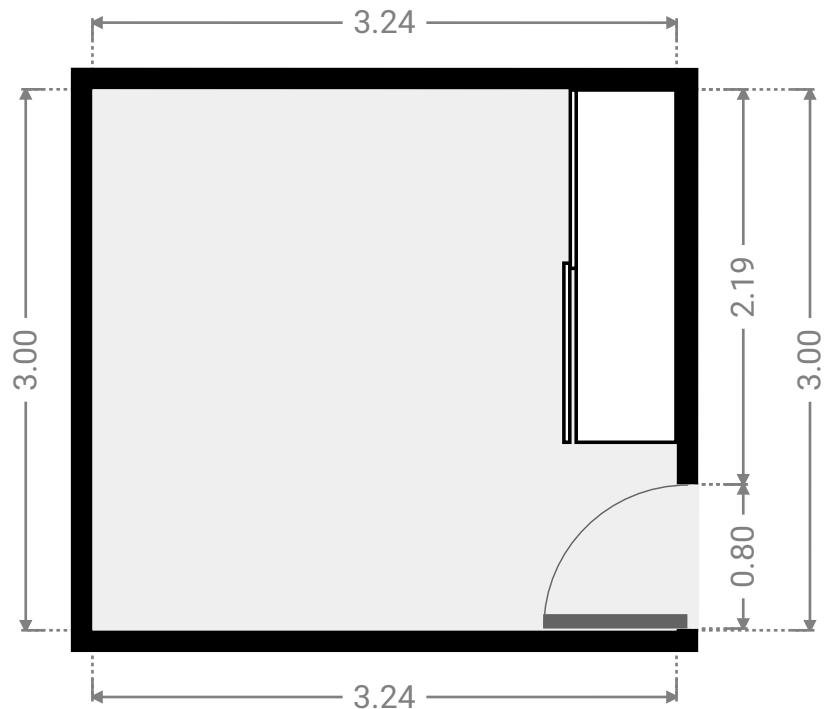
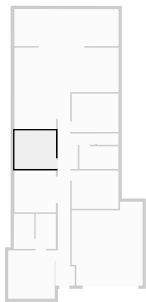
▼ **Bedroom**
Ground Floor

WIDTH: 3.66 m • LENGTH: 3.00 m
AREA: 10.98 m² • PERIMETER: 13.32 m



▼ **Bedroom**
Ground Floor

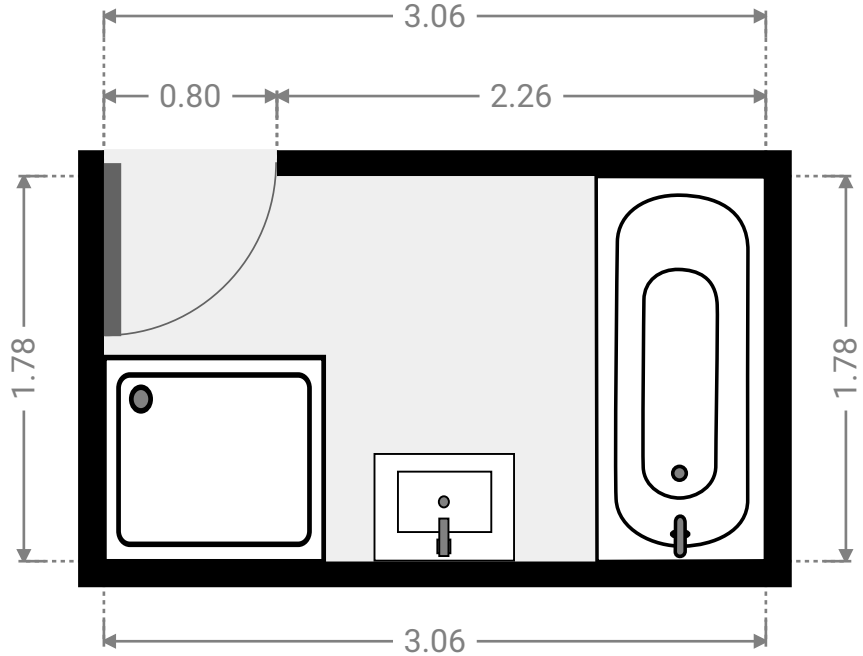
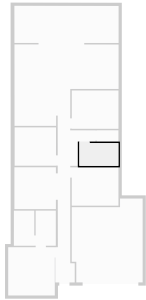
WIDTH: 3.24 m • LENGTH: 3.00 m
AREA: 9.72 m² • PERIMETER: 12.48 m



FLOORS: 1

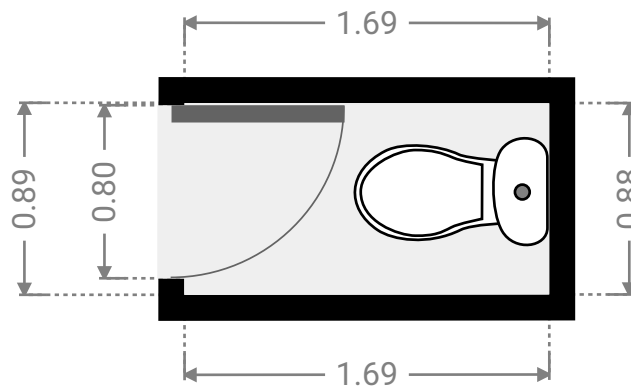
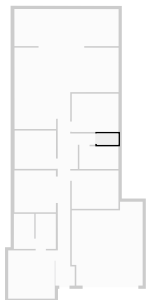
▼ Bathroom
Ground Floor

WIDTH: 3.06 m • LENGTH: 1.78 m
AREA: 5.45 m² • PERIMETER: 9.68 m



▼ Toilet
Ground Floor

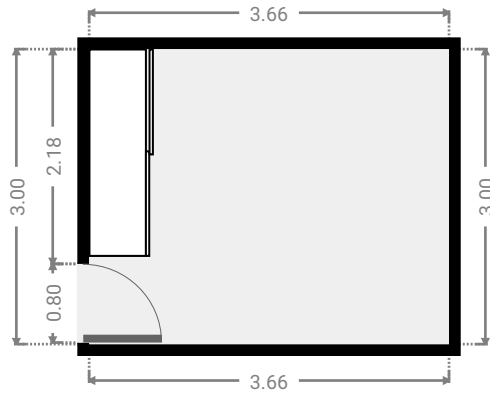
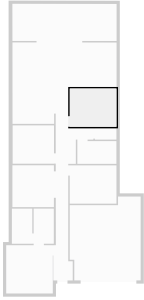
WIDTH: 1.69 m • LENGTH: 0.89 m
AREA: 1.49 m² • PERIMETER: 5.14 m



FLOORS: 1

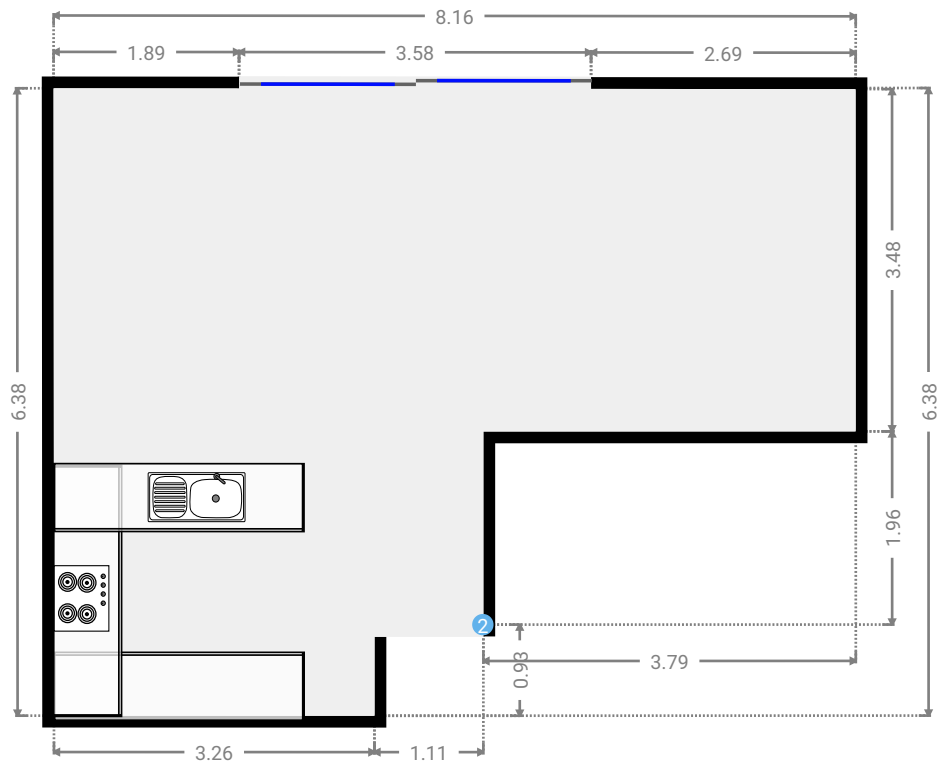
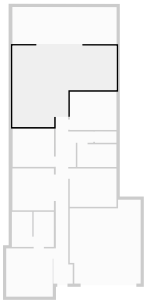
▼ **Bedroom**
Ground Floor

WIDTH: 3.66 m • LENGTH: 3.00 m
AREA: 10.98 m² • PERIMETER: 13.32 m



▼ **Kitchen**
Ground Floor

WIDTH: 8.16 m • LENGTH: 6.38 m
AREA: 40.03 m² • PERIMETER: 29.06 m



▼ Kitchen/Ground Floor

2 OPENING

Height
0.00 m



▼ Other Ground Floor

WIDTH: 8.17 m • LENGTH: 2.91 m
AREA: 23.72 m² • PERIMETER: 22.14 m

