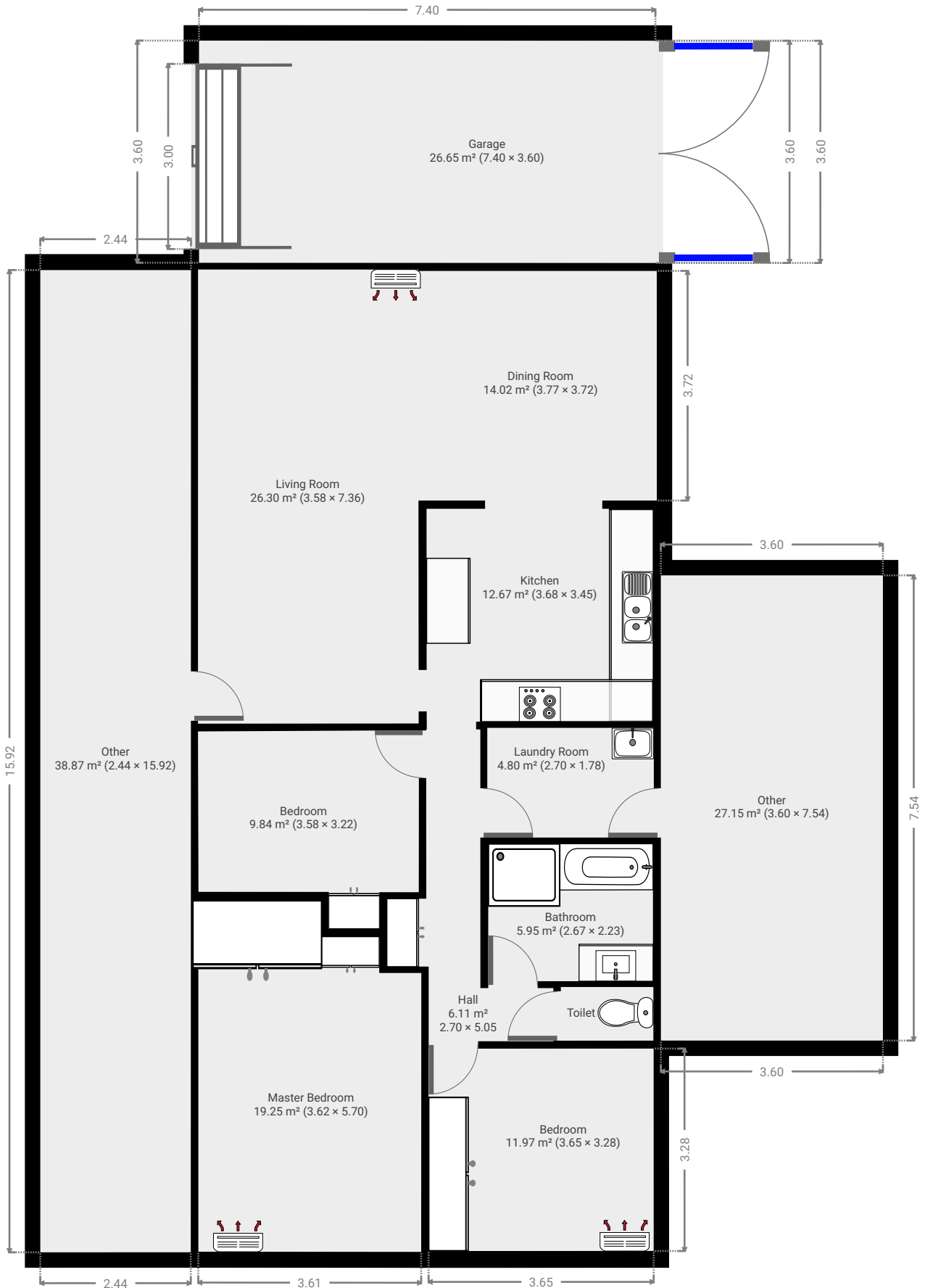


# 6 Rutherford Street

Created on  
2021-05-18

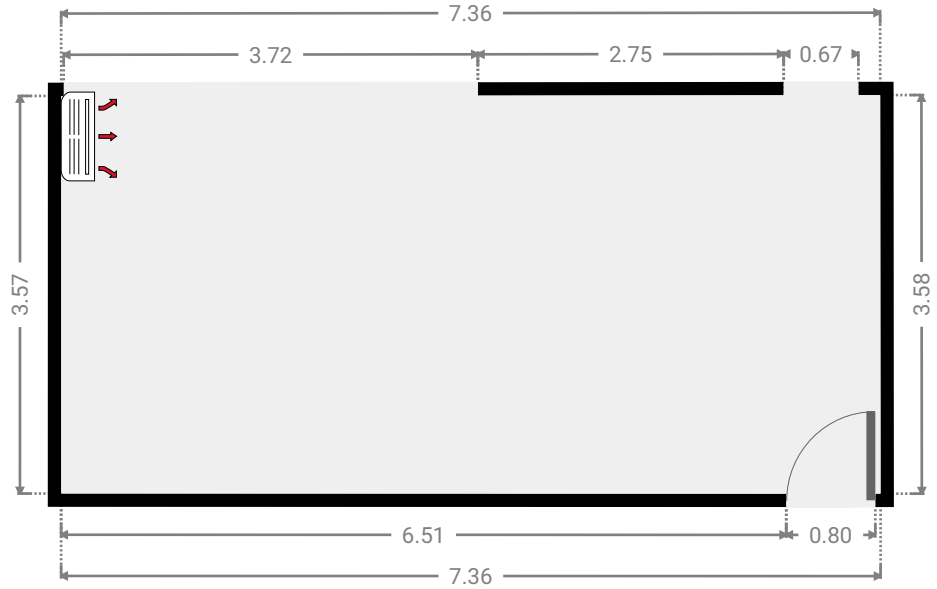
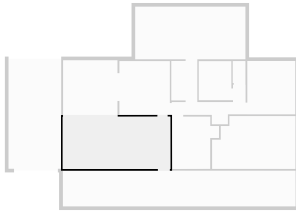
Floors  
1

▼ Ground Floor



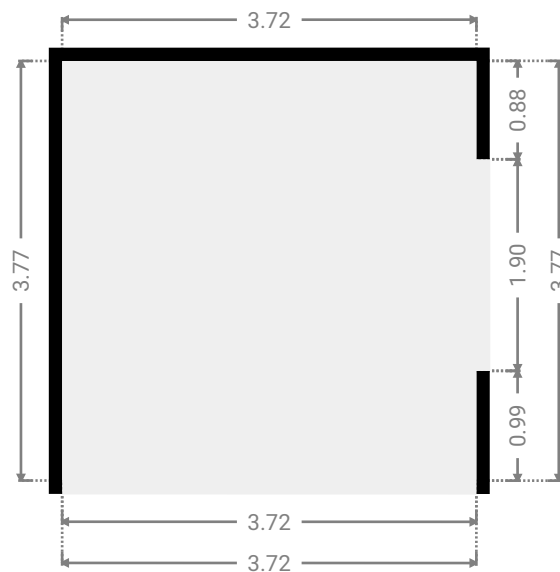
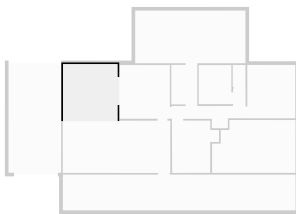
▼ Living Room  
Ground Floor

WIDTH: 7.36 m • LENGTH: 3.58 m  
AREA: 26.30 m<sup>2</sup> • PERIMETER: 21.87 m



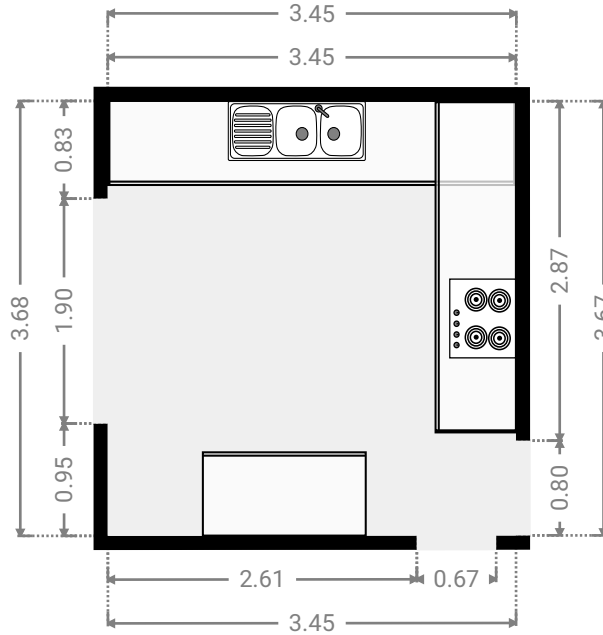
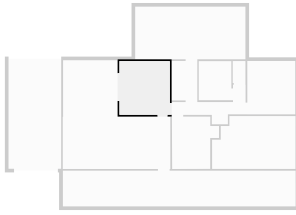
▼ Dining Room  
Ground Floor

WIDTH: 3.72 m • LENGTH: 3.77 m  
AREA: 14.02 m<sup>2</sup> • PERIMETER: 14.98 m



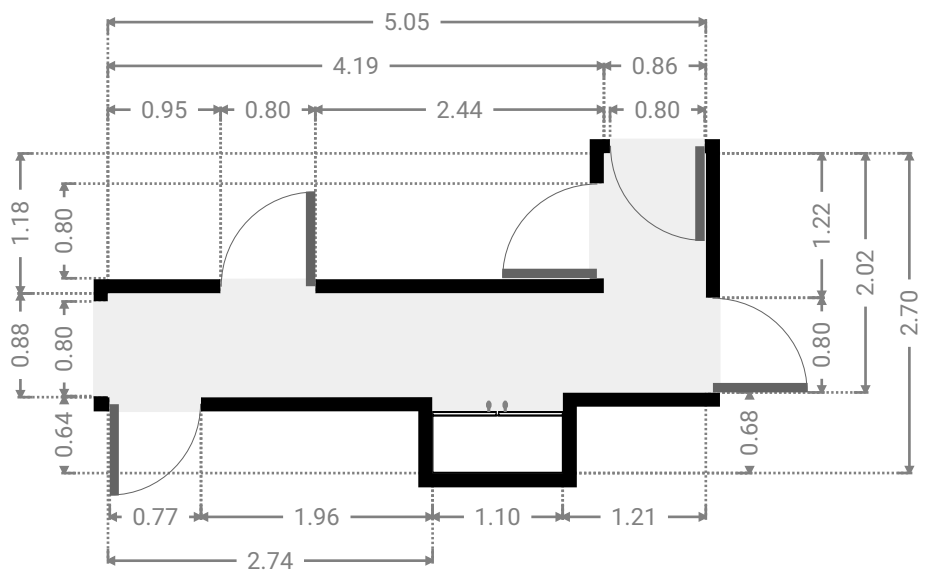
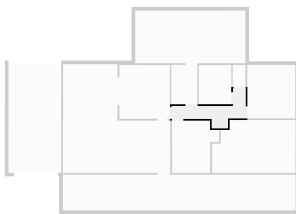
▼ Kitchen  
Ground Floor

WIDTH: 3.45 m • LENGTH: 3.68 m  
AREA: 12.67 m<sup>2</sup> • PERIMETER: 14.25 m



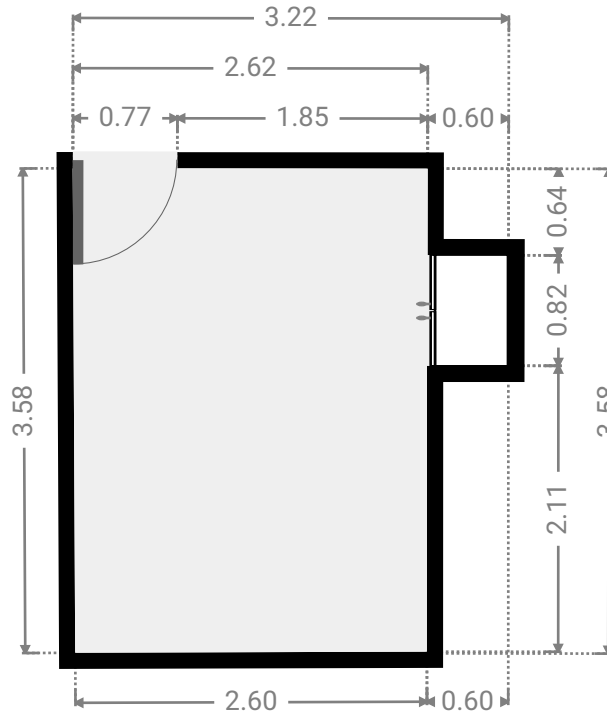
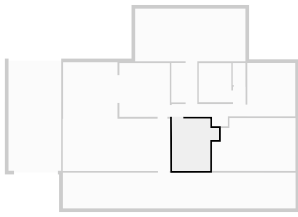
▼ Hall  
Ground Floor

WIDTH: 5.05 m • LENGTH: 2.70 m  
AREA: 6.11 m<sup>2</sup> • PERIMETER: 15.51 m



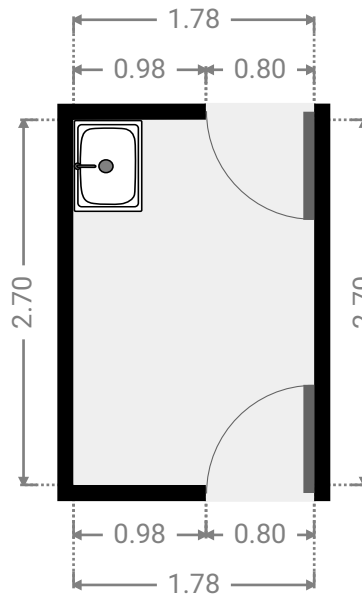
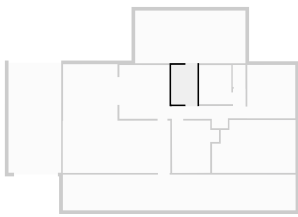
▼ **Bedroom**  
Ground Floor

WIDTH: 3.22 m • LENGTH: 3.58 m  
AREA: 9.84 m<sup>2</sup> • PERIMETER: 13.58 m



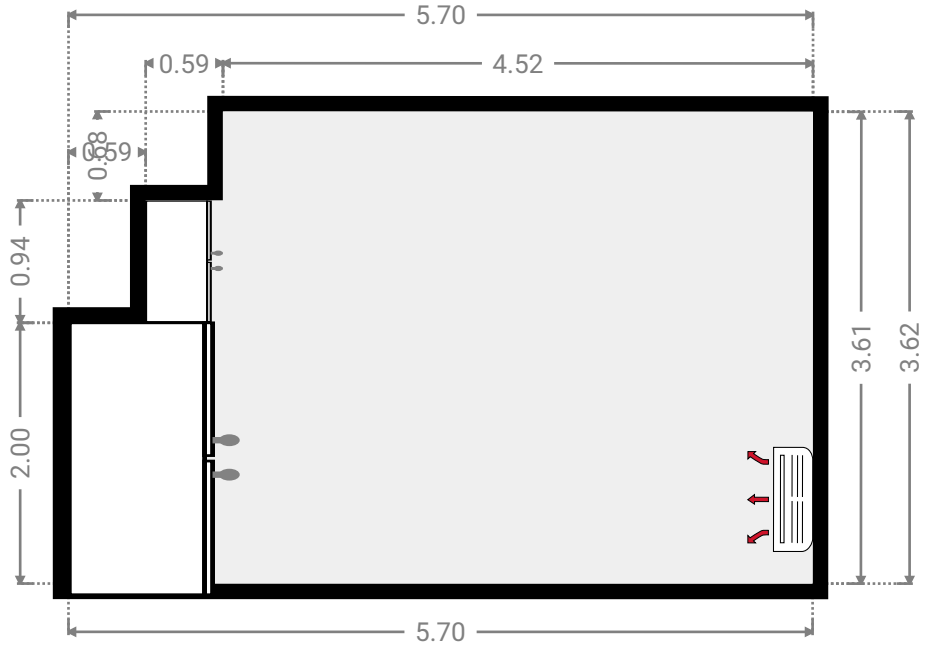
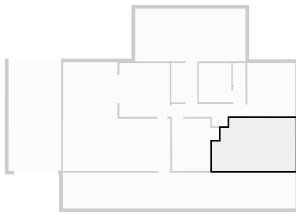
▼ **Laundry Room**  
Ground Floor

WIDTH: 1.78 m • LENGTH: 2.70 m  
AREA: 4.80 m<sup>2</sup> • PERIMETER: 8.96 m



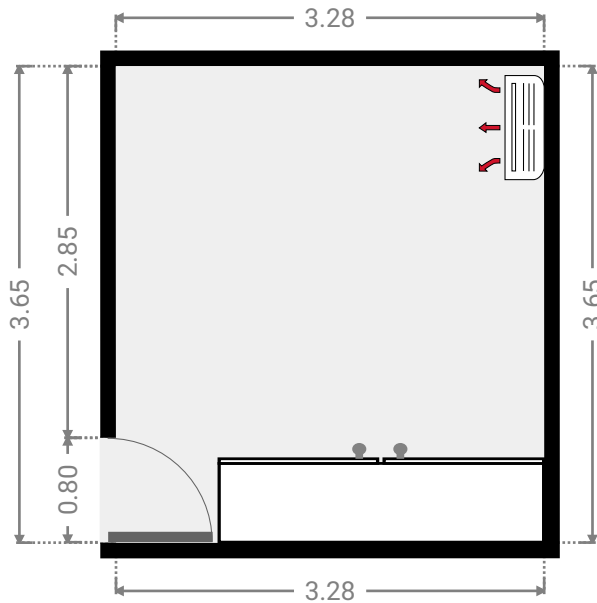
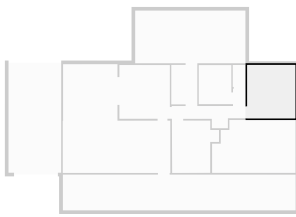
▼ **Master Bedroom**  
Ground Floor

WIDTH: 5.70 m • LENGTH: 3.62 m  
AREA: 19.25 m<sup>2</sup> • PERIMETER: 18.63 m



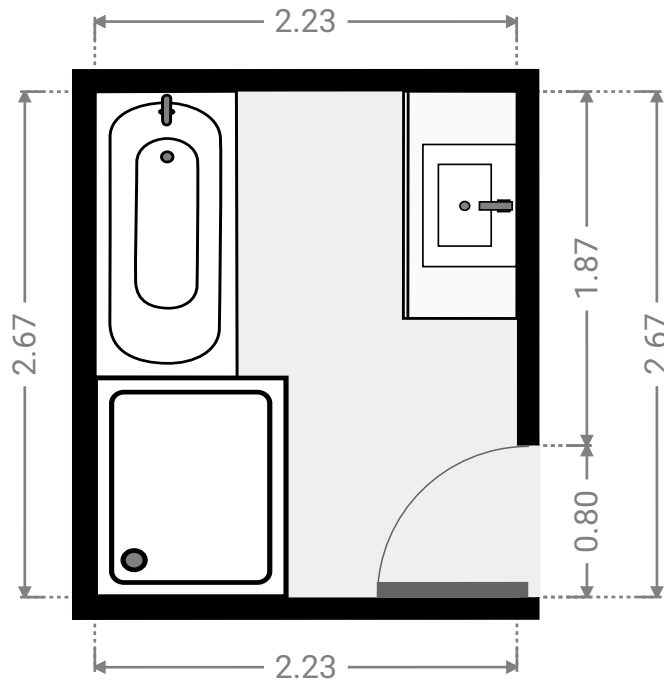
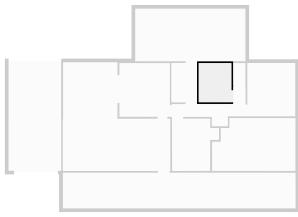
▼ **Bedroom**  
Ground Floor

WIDTH: 3.28 m • LENGTH: 3.65 m  
AREA: 11.97 m<sup>2</sup> • PERIMETER: 13.86 m



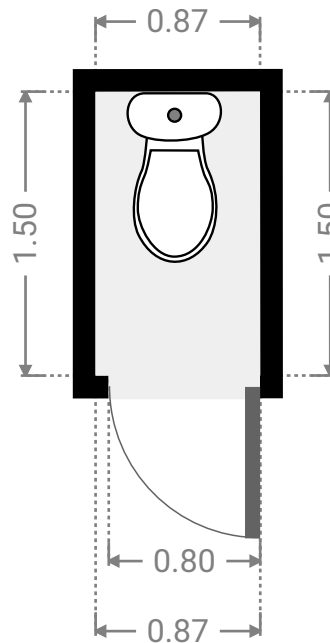
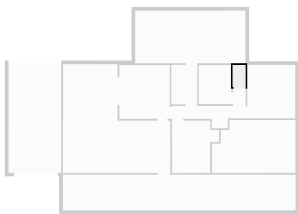
▼ **Bathroom**  
Ground Floor

WIDTH: 2.23 m • LENGTH: 2.67 m  
AREA: 5.95 m<sup>2</sup> • PERIMETER: 9.80 m



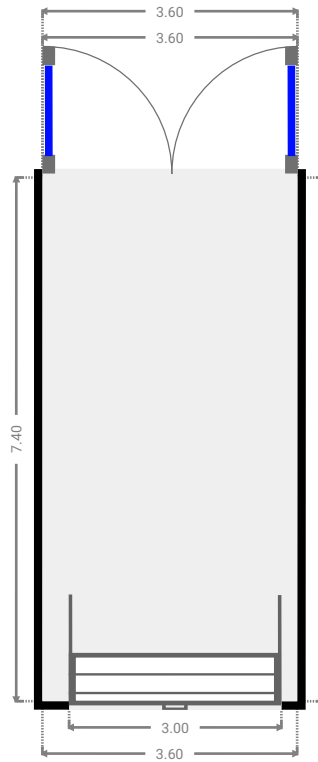
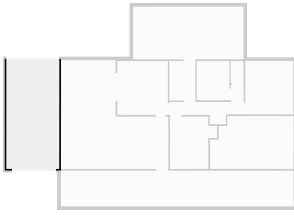
▼ **Toilet**  
Ground Floor

WIDTH: 0.87 m • LENGTH: 1.50 m  
AREA: 1.30 m<sup>2</sup> • PERIMETER: 4.74 m



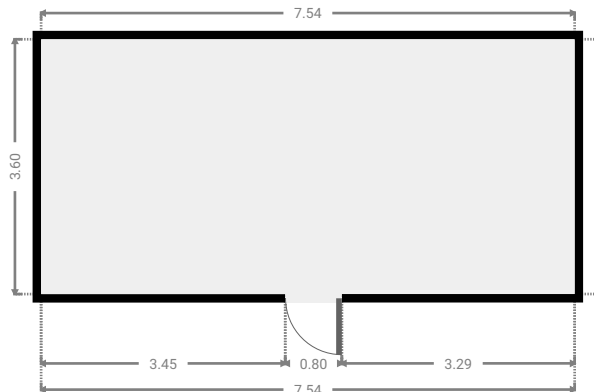
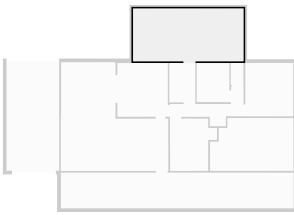
▼ **Garage**  
Ground Floor

WIDTH: 3.60 m • LENGTH: 7.40 m  
AREA: 26.65 m<sup>2</sup> • PERIMETER: 22.00 m



▼ **Other**  
Ground Floor

WIDTH: 7.54 m • LENGTH: 3.60 m  
AREA: 27.15 m<sup>2</sup> • PERIMETER: 22.28 m





▼ Other  
Ground Floor

WIDTH: 15.92 m • LENGTH: 2.44 m  
AREA: 38.87 m<sup>2</sup> • PERIMETER: 36.72 m

