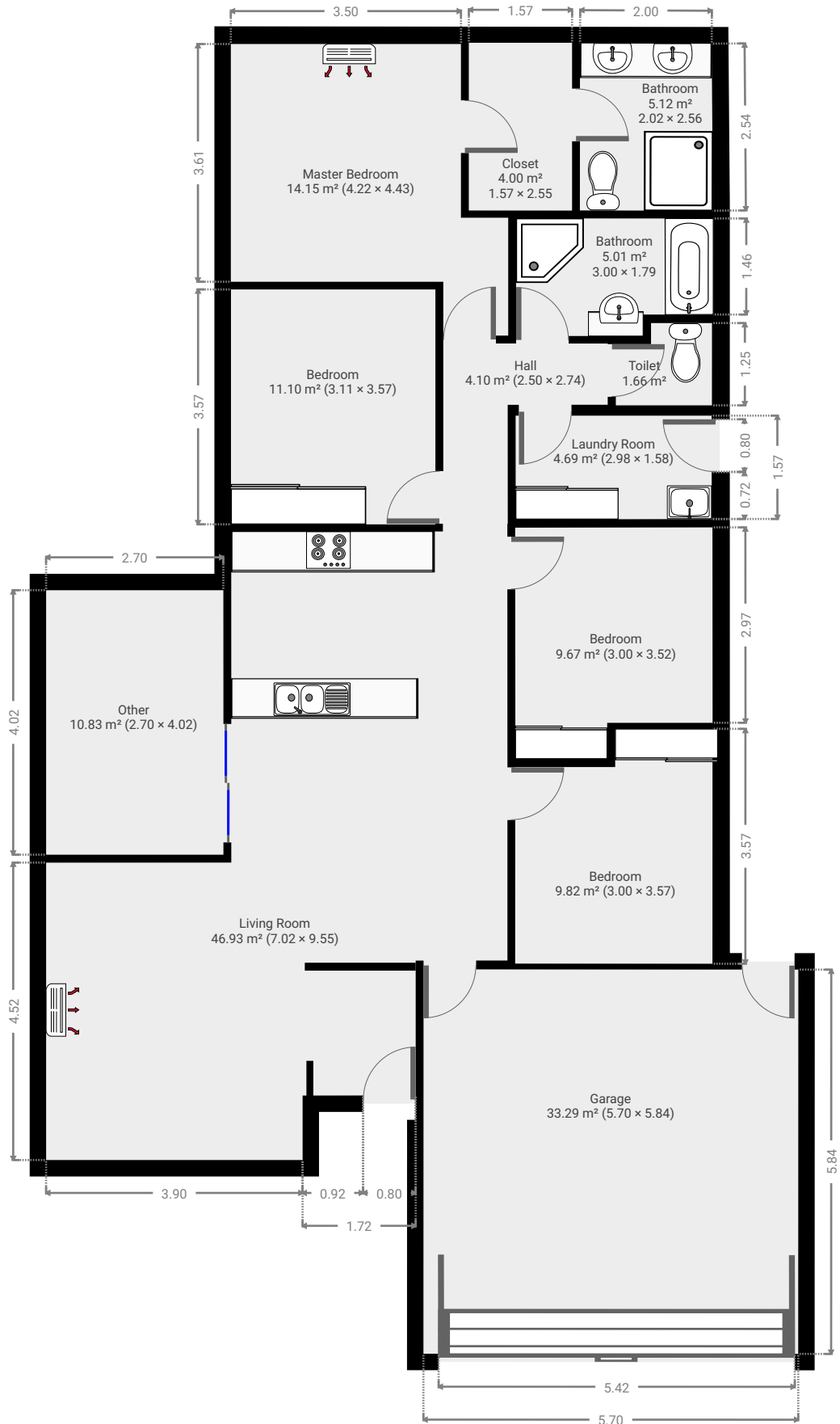


6 Keirin Court

Created on
2021-02-25

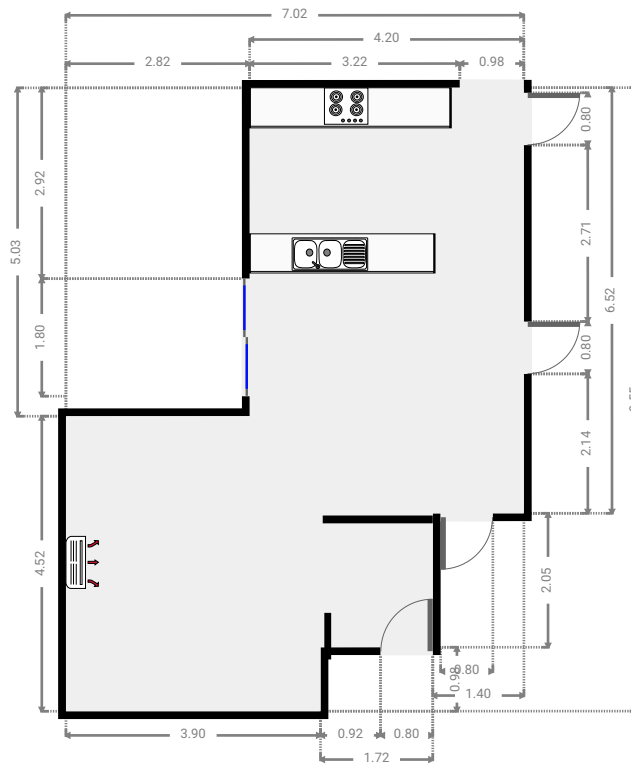
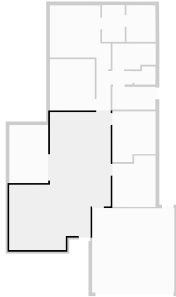
Floors
1

▼ Ground Floor



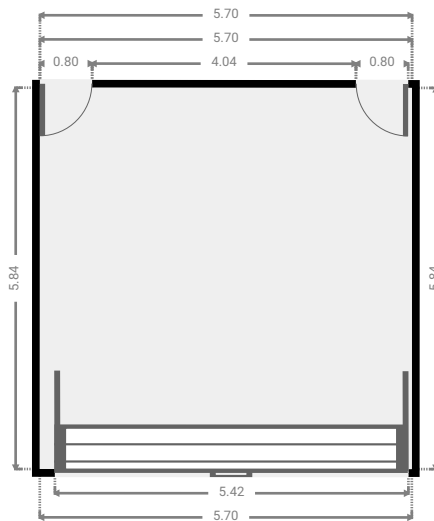
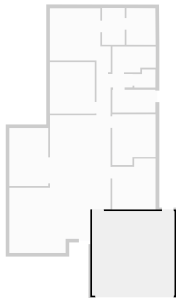
▼ Living Room Ground Floor

WIDTH: 7.02 m • LENGTH: 9.55 m
AREA: 46.93 m² • PERIMETER: 33.13 m



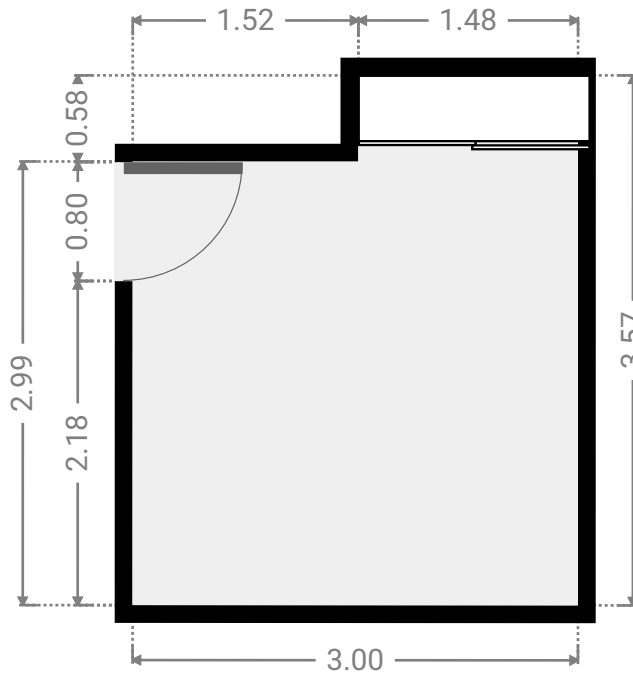
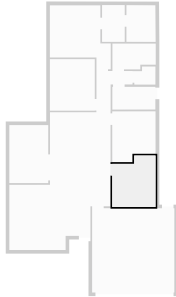
▼ Garage Ground Floor

WIDTH: 5.70 m • LENGTH: 5.84 m
AREA: 33.29 m² • PERIMETER: 23.08 m



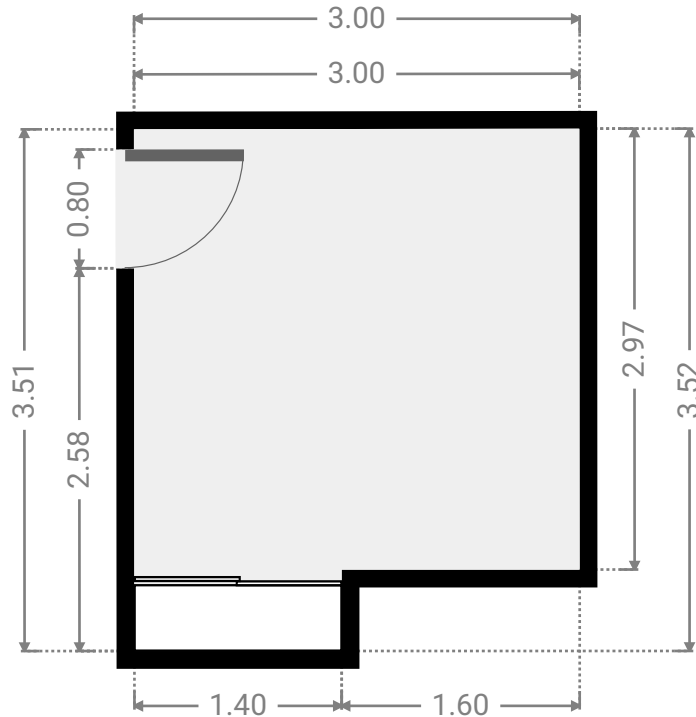
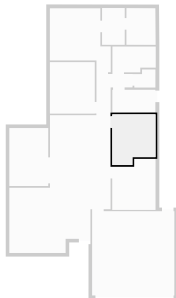
▼ **Bedroom**
Ground Floor

WIDTH: 3.00 m • LENGTH: 3.57 m
AREA: 9.82 m² • PERIMETER: 13.14 m



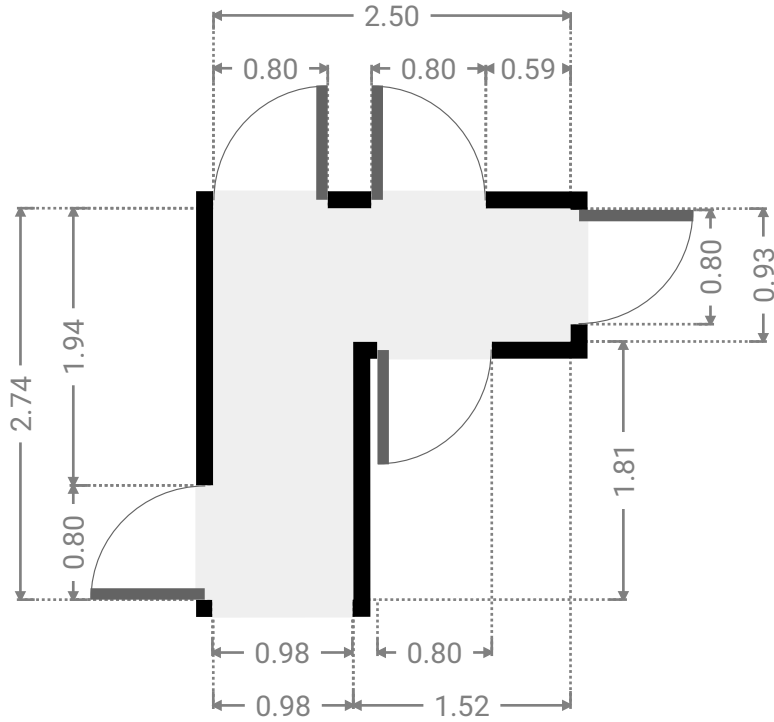
▼ **Bedroom**
Ground Floor

WIDTH: 3.00 m • LENGTH: 3.52 m
AREA: 9.67 m² • PERIMETER: 13.03 m



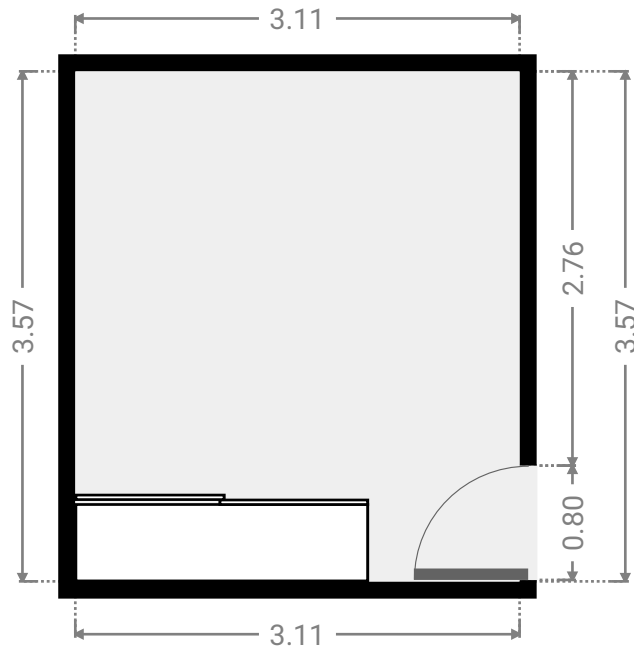
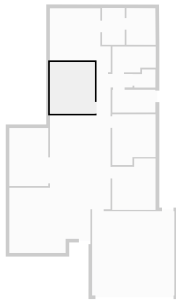
▼ **Hall**
Ground Floor

WIDTH: 2.50 m • LENGTH: 2.74 m
AREA: 4.10 m² • PERIMETER: 10.48 m



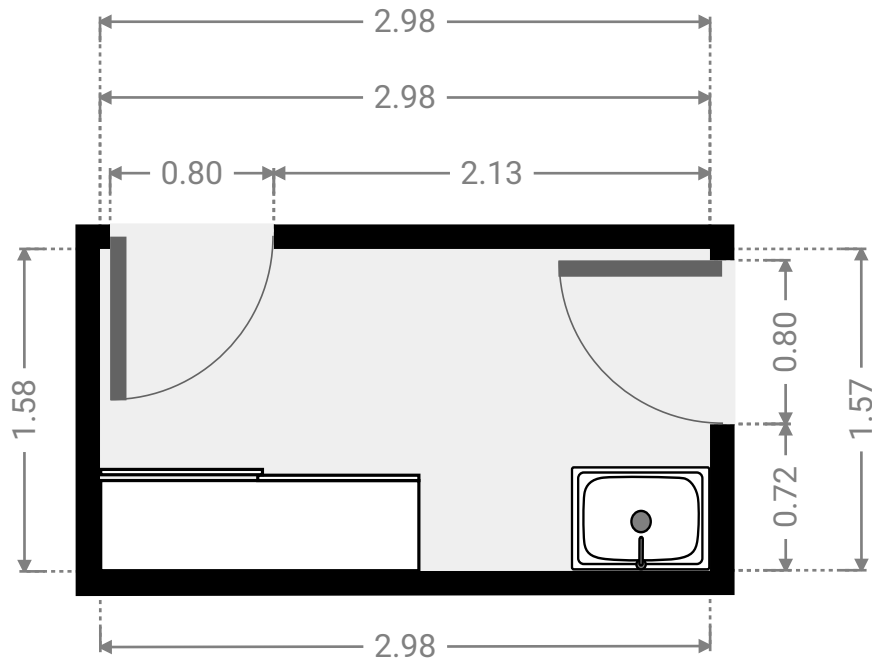
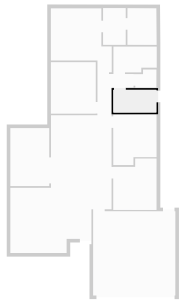
▼ **Bedroom**
Ground Floor

WIDTH: 3.11 m • LENGTH: 3.57 m
AREA: 11.10 m² • PERIMETER: 13.36 m



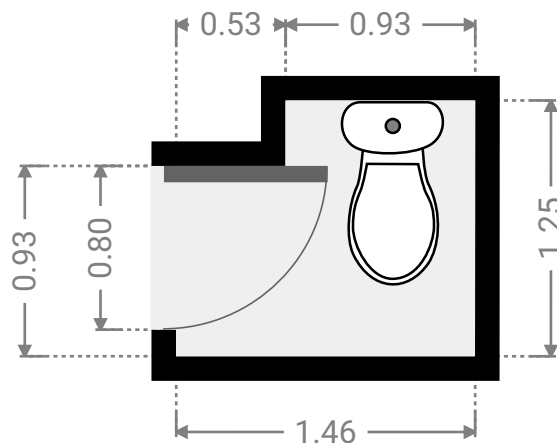
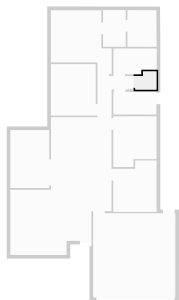
▼ Laundry Room
Ground Floor

WIDTH: 2.98 m • LENGTH: 1.58 m
AREA: 4.69 m² • PERIMETER: 9.11 m



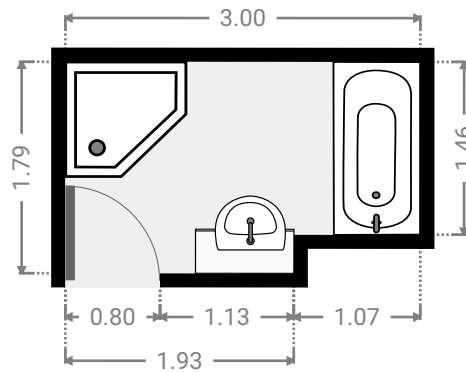
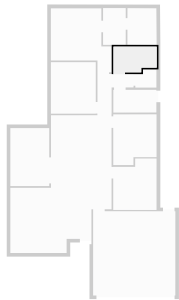
▼ Toilet
Ground Floor

WIDTH: 1.46 m • LENGTH: 1.25 m
AREA: 1.66 m² • PERIMETER: 5.42 m



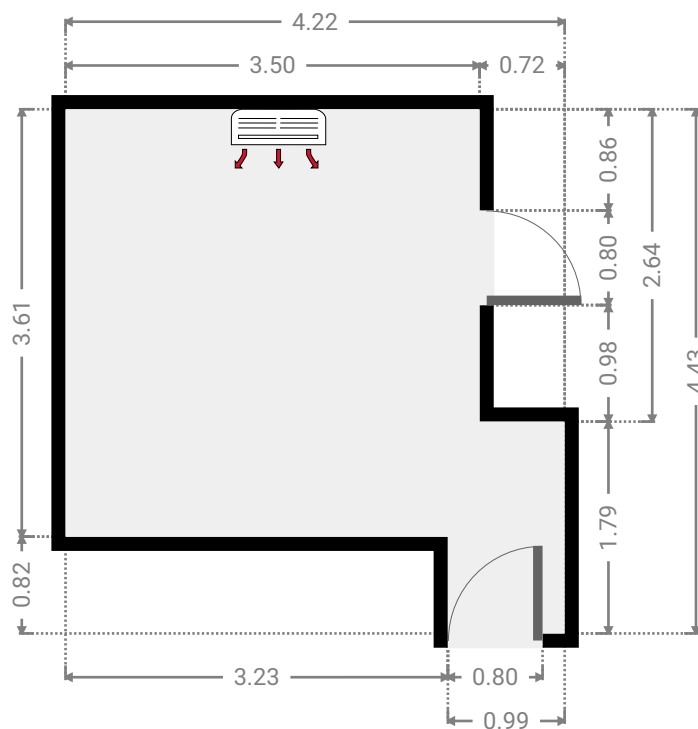
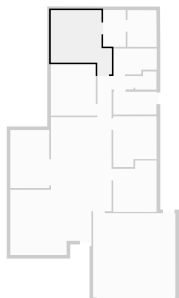
▼ Bathroom Ground Floor

WIDTH: 3.00 m • LENGTH: 1.79 m
AREA: 5.01 m² • PERIMETER: 9.57 m



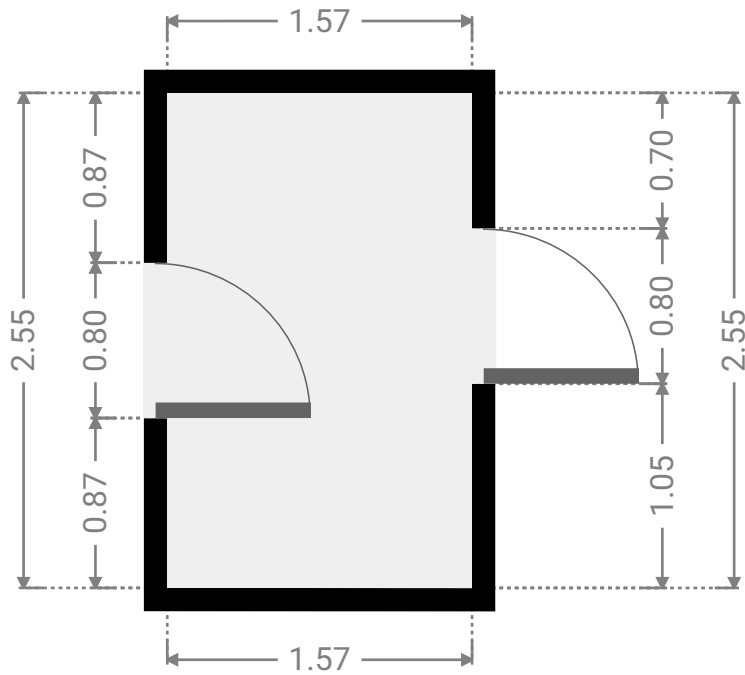
▼ Master Bedroom Ground Floor

WIDTH: 4.22 m • LENGTH: 4.43 m
AREA: 14.15 m² • PERIMETER: 17.30 m



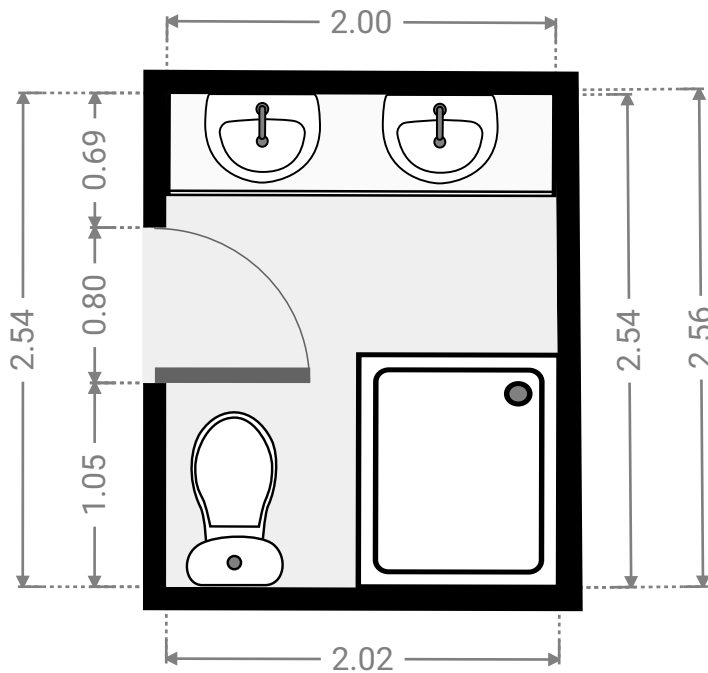
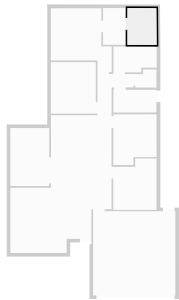
▼ **Closet**
Ground Floor

WIDTH: 1.57 m • LENGTH: 2.55 m
AREA: 4.00 m² • PERIMETER: 8.24 m



▼ **Bathroom**
Ground Floor

WIDTH: 2.02 m • LENGTH: 2.56 m
AREA: 5.12 m² • PERIMETER: 9.11 m



▼ Other
Ground Floor

WIDTH: 2.70 m • LENGTH: 4.02 m
AREA: 10.83 m² • PERIMETER: 13.43 m

