

# 6 Jillian Court

**SUBMITTED BY**  
Ray White Rockhampton Casey  
stockers@cqoz.com

---

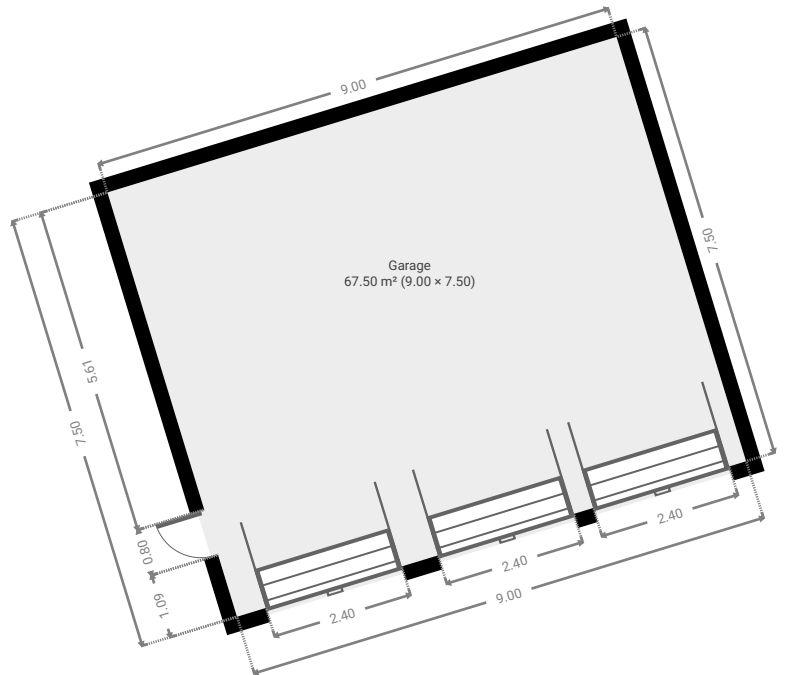
**CREATED ON**  
2022-08-22

---

**Floors**  
1

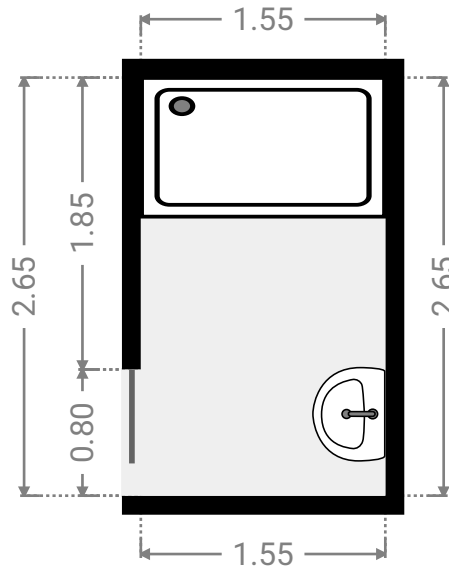
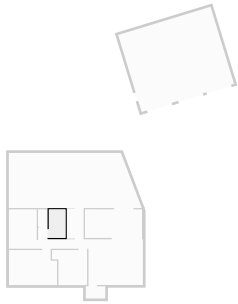
---

## ▼ Ground Floor



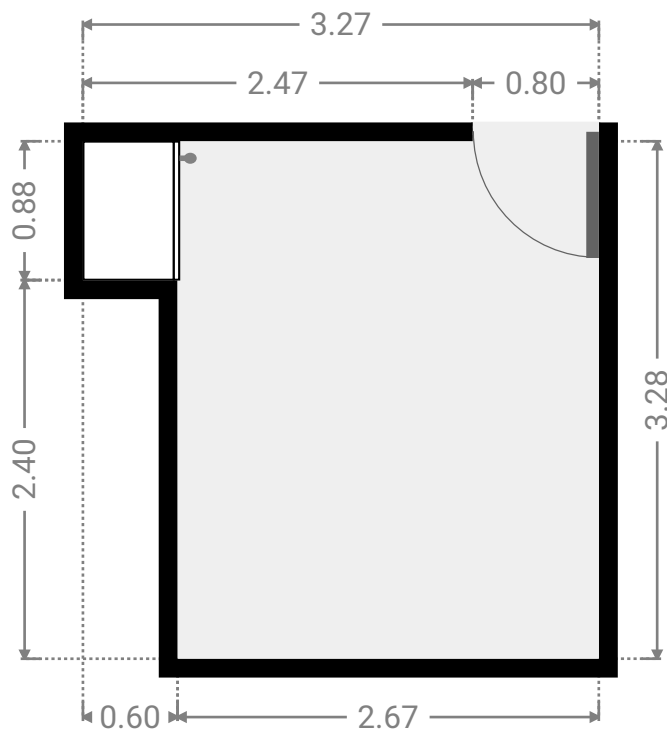
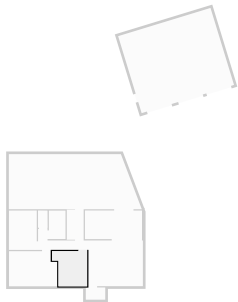
▼ **Bathroom**  
Ground Floor

WIDTH: 1.55 m • LENGTH: 2.65 m  
AREA: 4.11 m<sup>2</sup> • PERIMETER: 8.40 m



▼ **Bedroom**  
Ground Floor

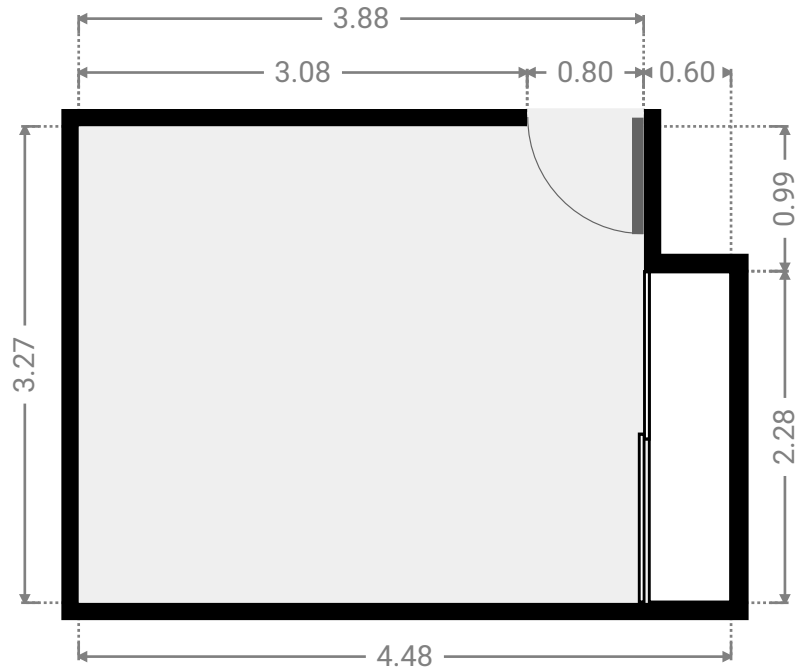
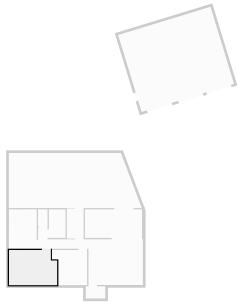
WIDTH: 3.27 m • LENGTH: 3.28 m  
AREA: 9.29 m<sup>2</sup> • PERIMETER: 13.10 m



FLOORS: 1

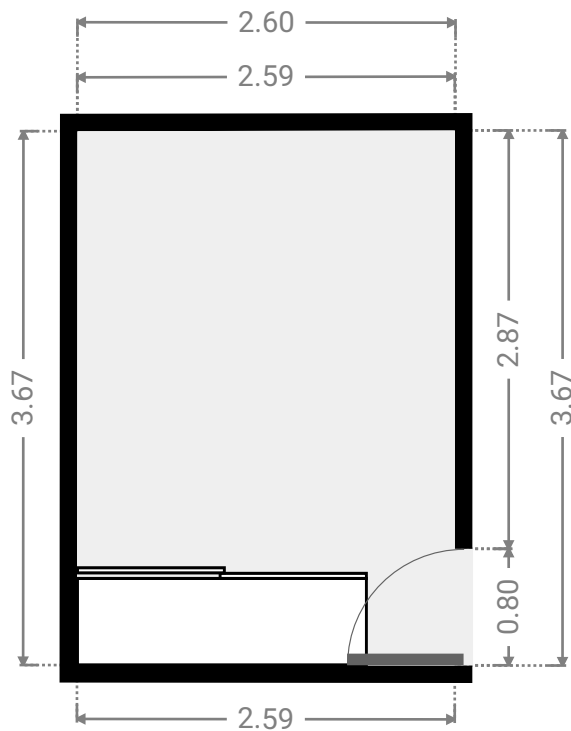
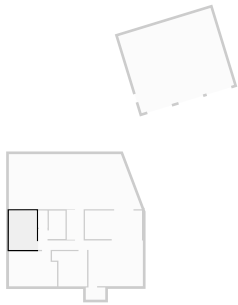
▼ **Bedroom**  
Ground Floor

WIDTH: 4.48 m • LENGTH: 3.27 m  
AREA: 14.06 m<sup>2</sup> • PERIMETER: 15.50 m



▼ **Bedroom**  
Ground Floor

WIDTH: 2.60 m • LENGTH: 3.67 m  
AREA: 9.52 m<sup>2</sup> • PERIMETER: 12.53 m



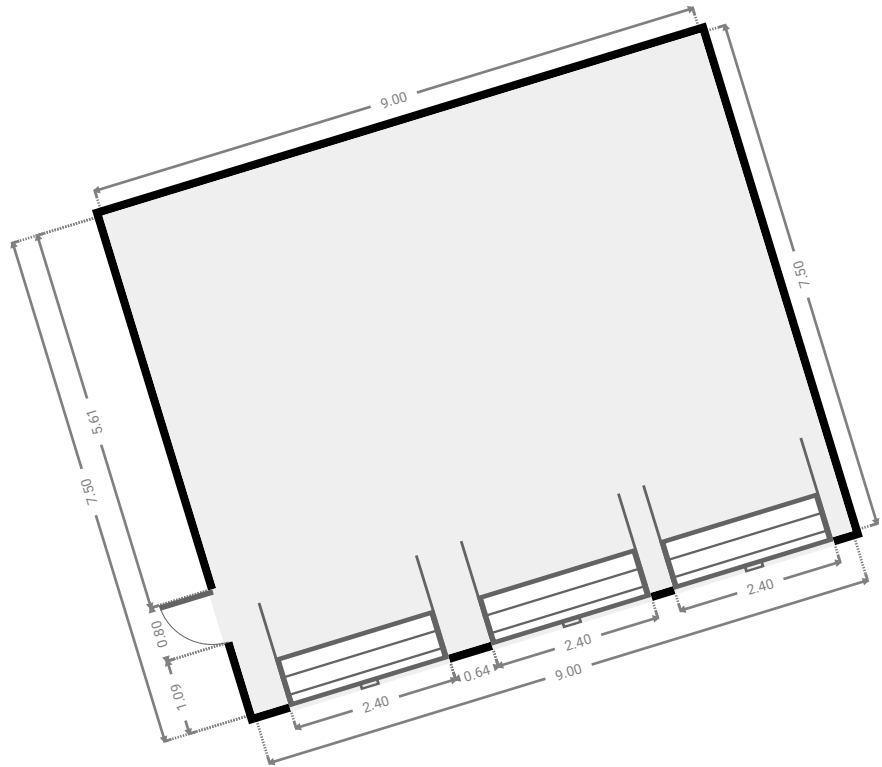
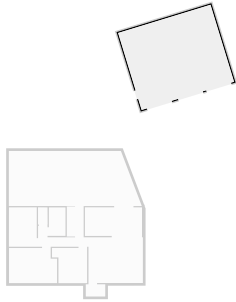
# 6 Jillian Court

FLOORS: 1



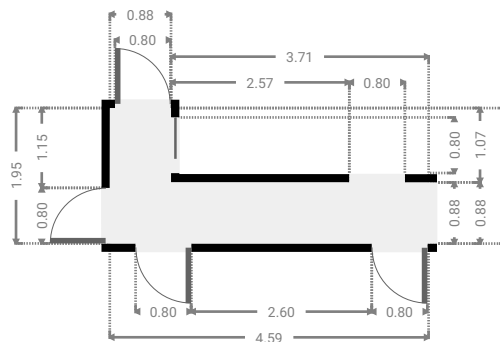
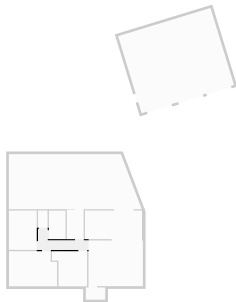
## ▼ Garage Ground Floor

WIDTH: 9.00 m • LENGTH: 7.50 m  
AREA: 67.50 m<sup>2</sup> • PERIMETER: 33.00 m



## ▼ Hall Ground Floor

WIDTH: 4.59 m • LENGTH: 1.95 m  
AREA: 4.98 m<sup>2</sup> • PERIMETER: 13.08 m



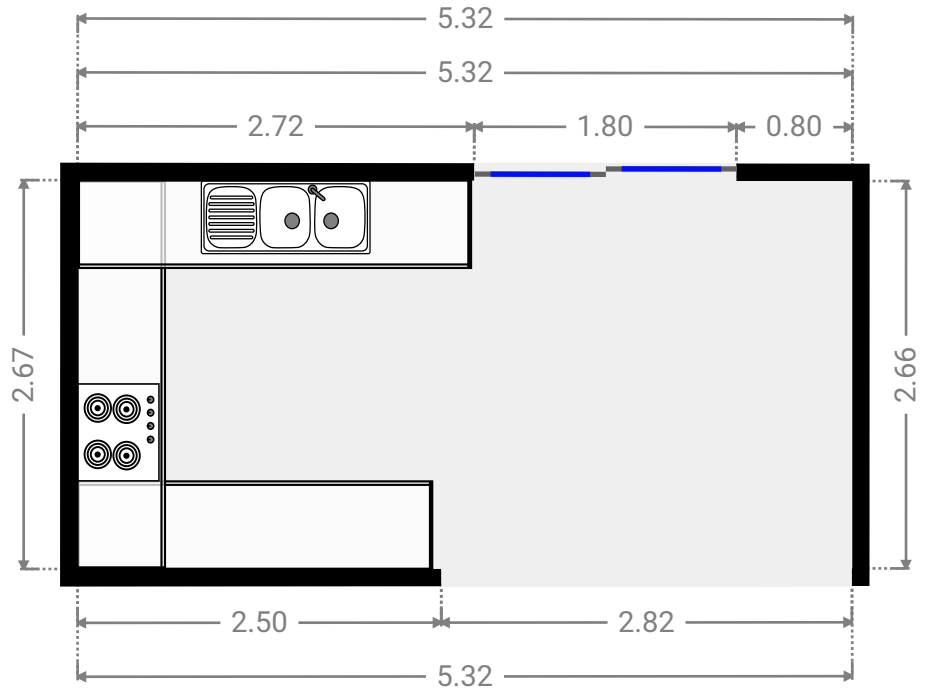
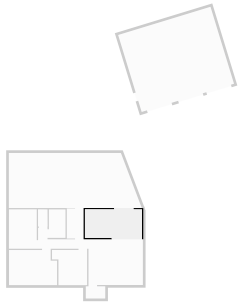
# 6 Jillian Court

FLOORS: 1



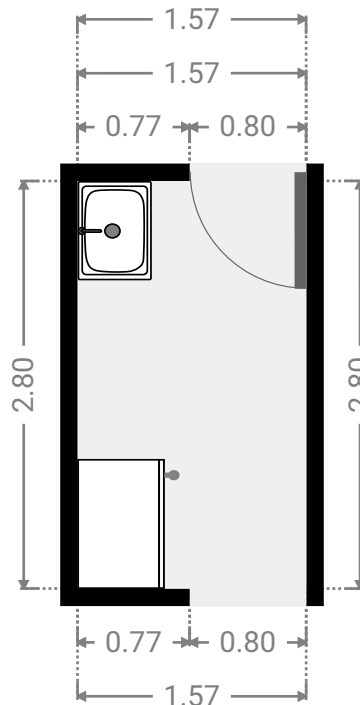
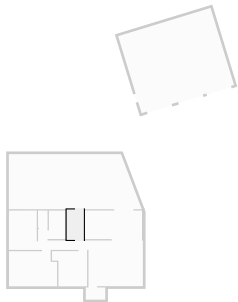
## ▼ Kitchen Ground Floor

WIDTH: 5.32 m • LENGTH: 2.67 m  
AREA: 14.18 m<sup>2</sup> • PERIMETER: 15.97 m



## ▼ Laundry Room Ground Floor

WIDTH: 1.57 m • LENGTH: 2.80 m  
AREA: 4.39 m<sup>2</sup> • PERIMETER: 8.74 m



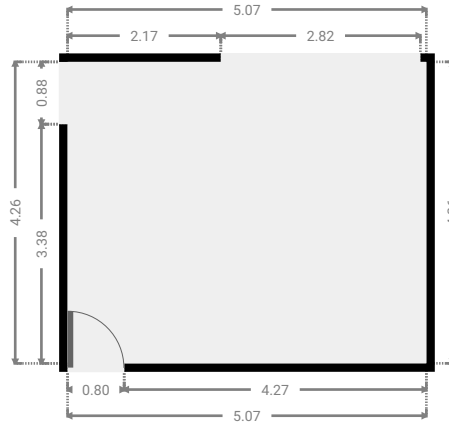
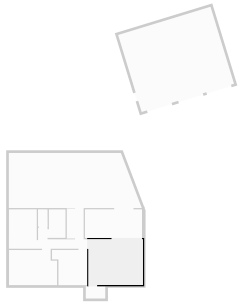
# 6 Jillian Court

FLOORS: 1



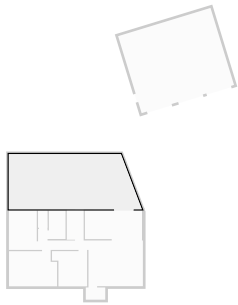
## ▼ Living Room Ground Floor

WIDTH: 5.07 m • LENGTH: 4.26 m  
AREA: 21.60 m<sup>2</sup> • PERIMETER: 18.66 m



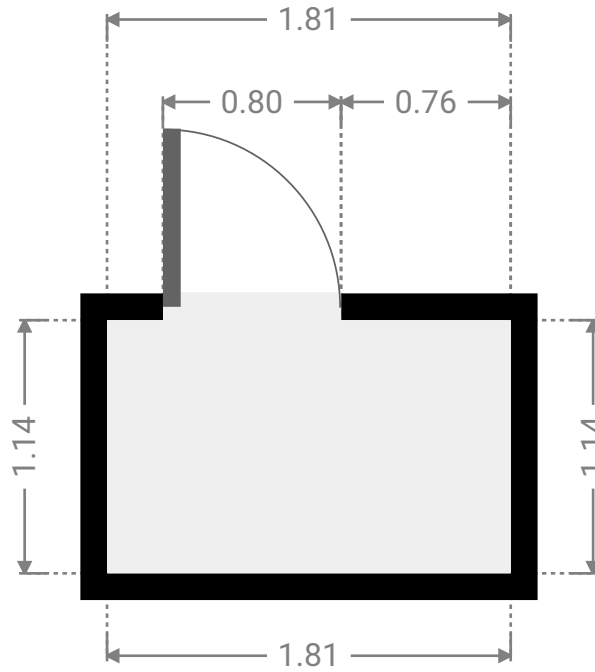
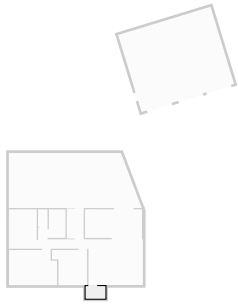
## ▼ Other Ground Floor

WIDTH: 12.39 m • LENGTH: 5.13 m  
AREA: 58.63 m<sup>2</sup> • PERIMETER: 33.46 m



▼ **Other**  
Ground Floor

WIDTH: 1.81 m • LENGTH: 1.14 m  
AREA: 2.06 m<sup>2</sup> • PERIMETER: 5.90 m



▼ **Toilet**  
Ground Floor

WIDTH: 0.89 m • LENGTH: 1.61 m  
AREA: 1.43 m<sup>2</sup> • PERIMETER: 4.98 m

