

# 6 Giles Court

**SUBMITTED BY**  
Ray White Rockhampton Casey  
stockers@cqoz.com

---

**CREATED ON**  
2022-09-21

---

**Floors**  
1

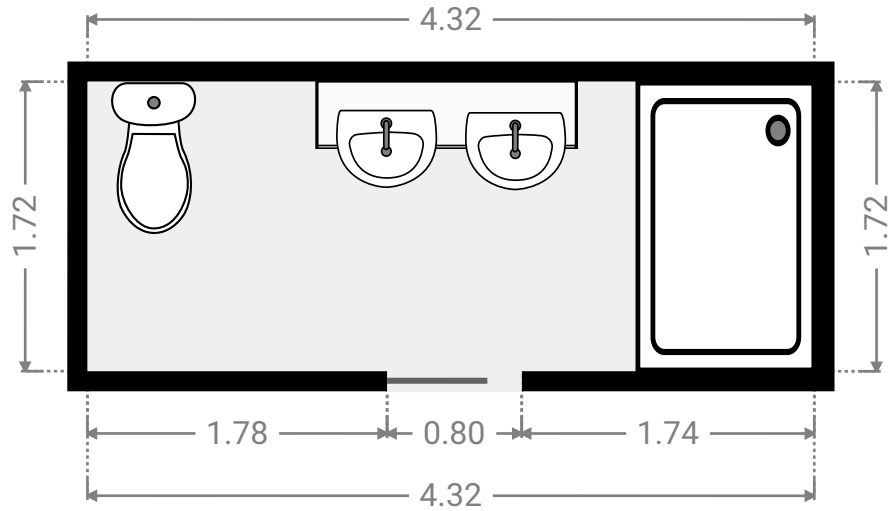
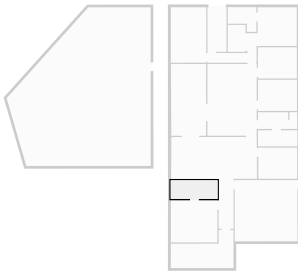
---

## ▼ Ground Floor



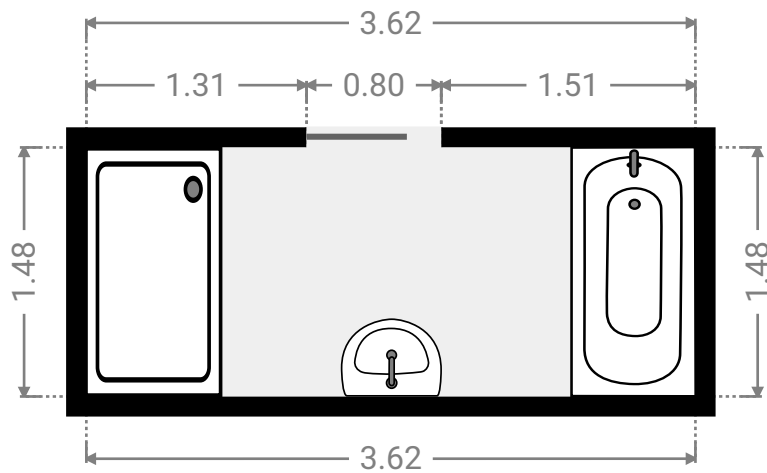
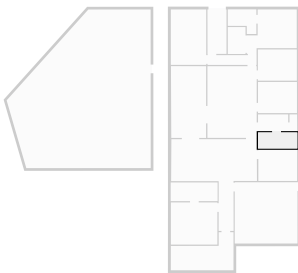
▼ **Bathroom**  
Ground Floor

WIDTH: 4.32 m • LENGTH: 1.72 m  
AREA: 7.43 m<sup>2</sup> • PERIMETER: 12.08 m



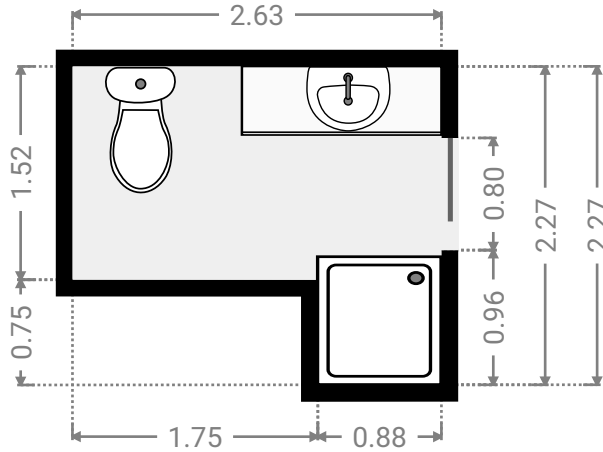
▼ **Bathroom**  
Ground Floor

WIDTH: 3.62 m • LENGTH: 1.48 m  
AREA: 5.36 m<sup>2</sup> • PERIMETER: 10.20 m



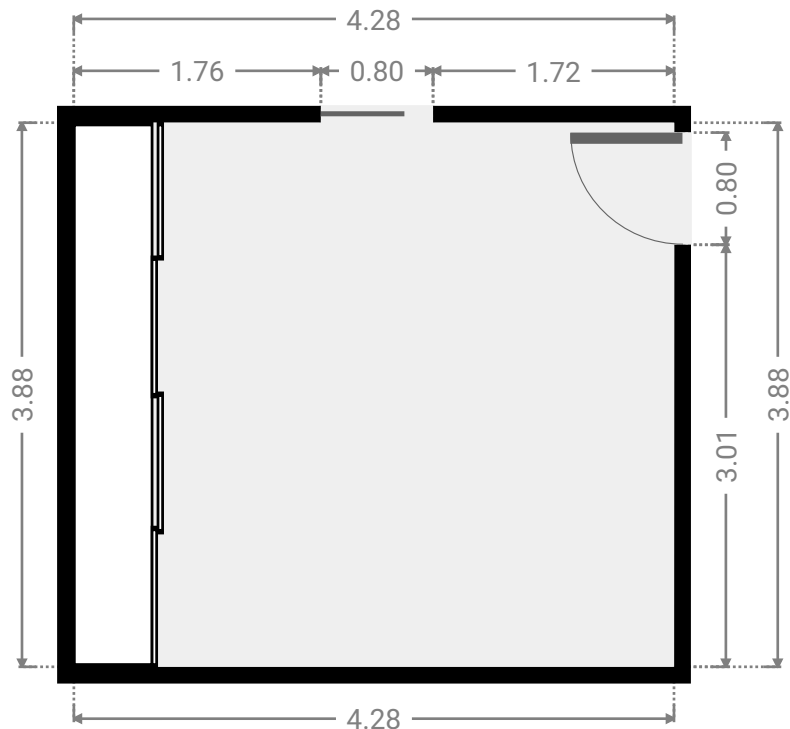
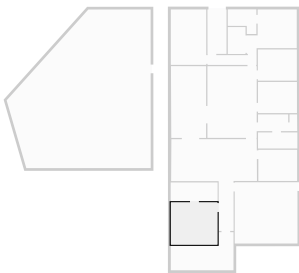
▼ **Bathroom**  
Ground Floor

WIDTH: 2.63 m • LENGTH: 2.27 m  
AREA: 4.66 m<sup>2</sup> • PERIMETER: 9.80 m



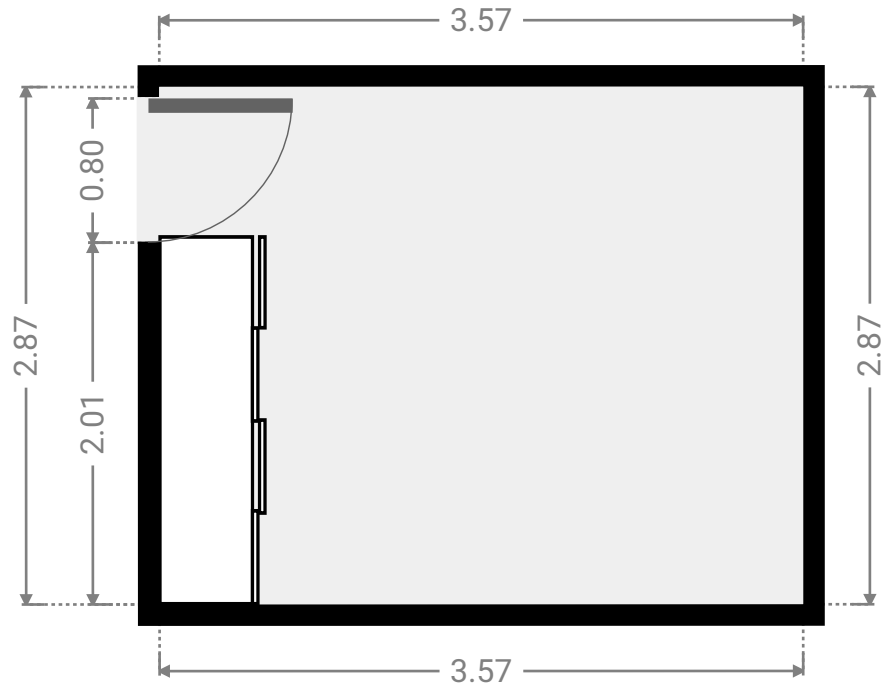
▼ **Bedroom**  
Ground Floor

WIDTH: 4.28 m • LENGTH: 3.88 m  
AREA: 16.61 m<sup>2</sup> • PERIMETER: 16.32 m



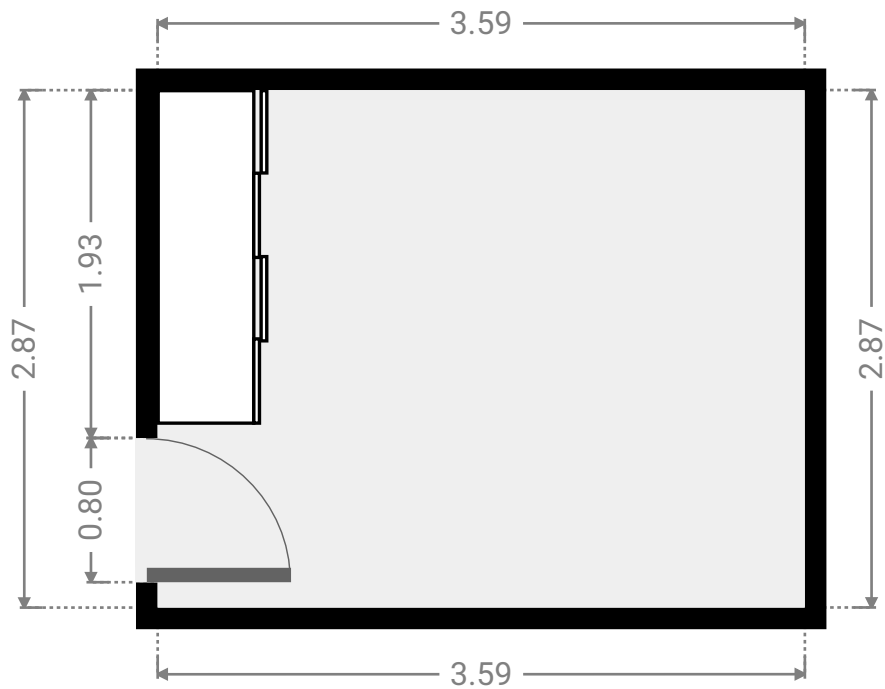
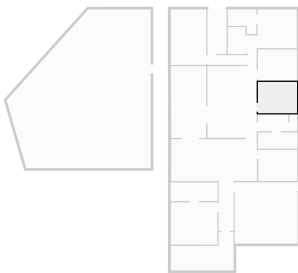
## ▼ Bedroom Ground Floor

WIDTH: 3.57 m • LENGTH: 2.87 m  
AREA: 10.25 m<sup>2</sup> • PERIMETER: 12.88 m



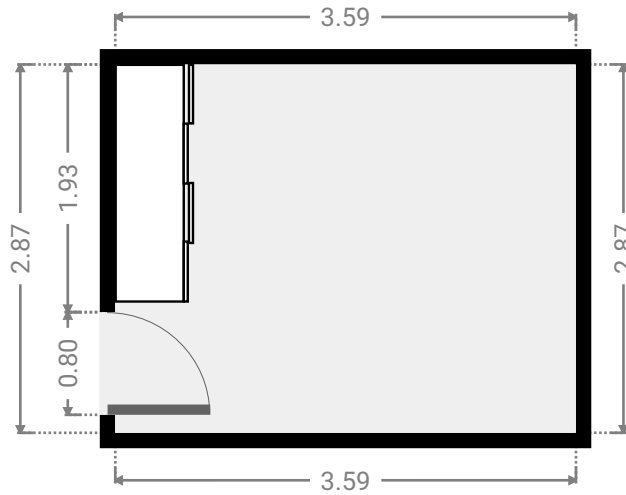
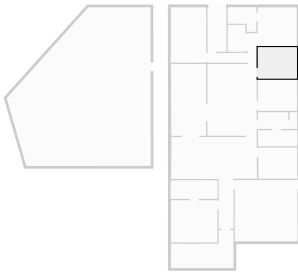
## ▼ Bedroom Ground Floor

WIDTH: 3.59 m • LENGTH: 2.87 m  
AREA: 10.30 m<sup>2</sup> • PERIMETER: 12.92 m



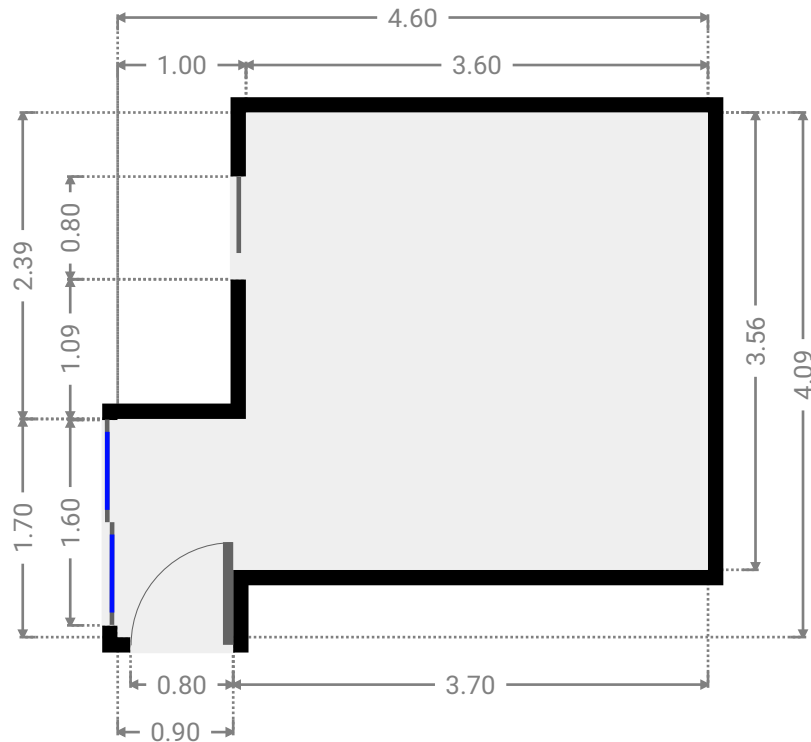
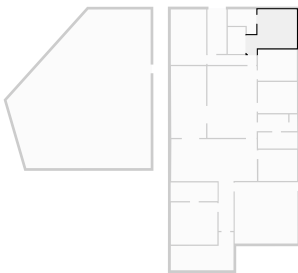
▼ **Bedroom**  
Ground Floor

WIDTH: 3.59 m • LENGTH: 2.87 m  
AREA: 10.30 m<sup>2</sup> • PERIMETER: 12.92 m



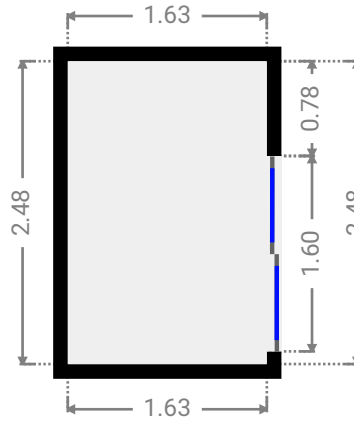
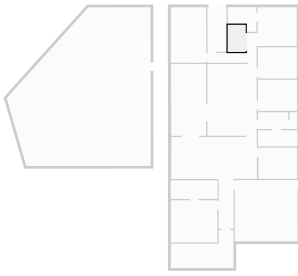
▼ **Bedroom**  
Ground Floor

WIDTH: 4.60 m • LENGTH: 4.09 m  
AREA: 14.47 m<sup>2</sup> • PERIMETER: 17.38 m



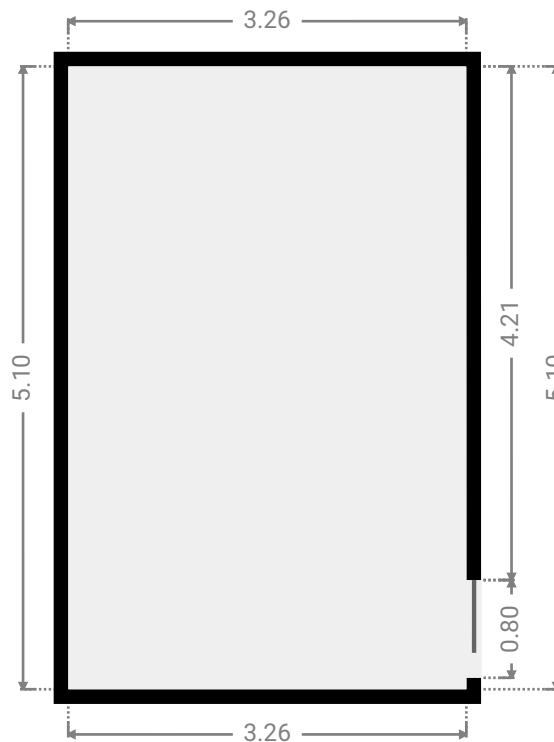
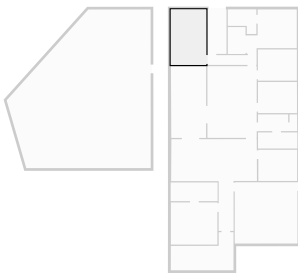
▼ **Closet**  
Ground Floor

WIDTH: 1.63 m • LENGTH: 2.48 m  
AREA: 4.04 m<sup>2</sup> • PERIMETER: 8.22 m



▼ **Bedroom**  
Ground Floor

WIDTH: 3.26 m • LENGTH: 5.10 m  
AREA: 16.62 m<sup>2</sup> • PERIMETER: 16.72 m



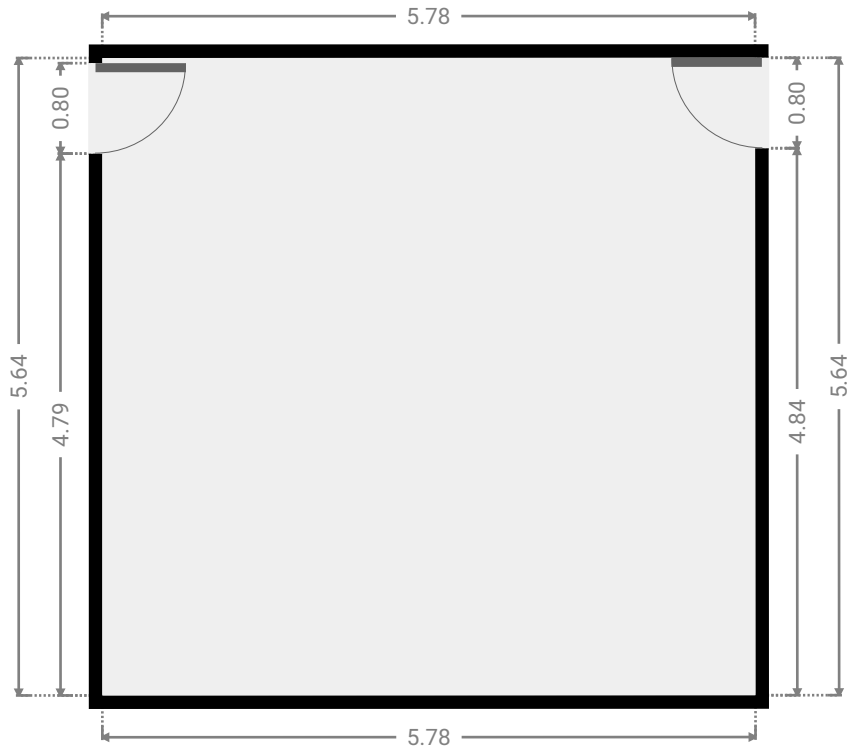
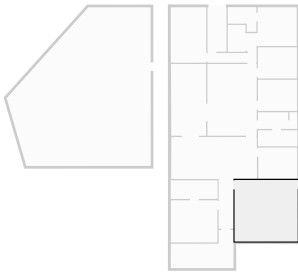
# 6 Giles Court

FLOORS: 1



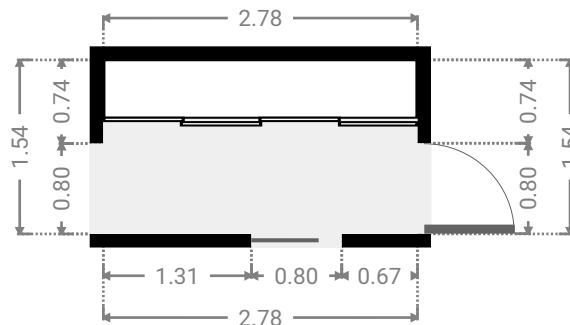
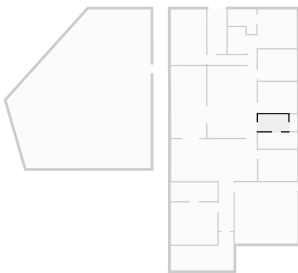
## ▼ Garage Ground Floor

WIDTH: 5.78 m • LENGTH: 5.64 m  
AREA: 32.59 m<sup>2</sup> • PERIMETER: 22.84 m



## ▼ Hall Ground Floor

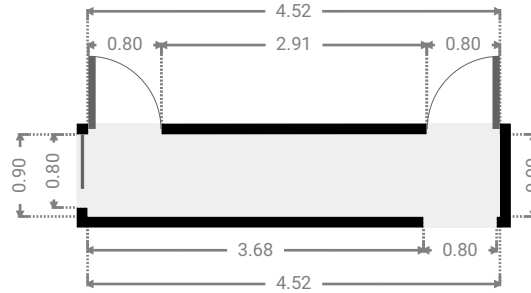
WIDTH: 2.78 m • LENGTH: 1.54 m  
AREA: 4.28 m<sup>2</sup> • PERIMETER: 8.64 m





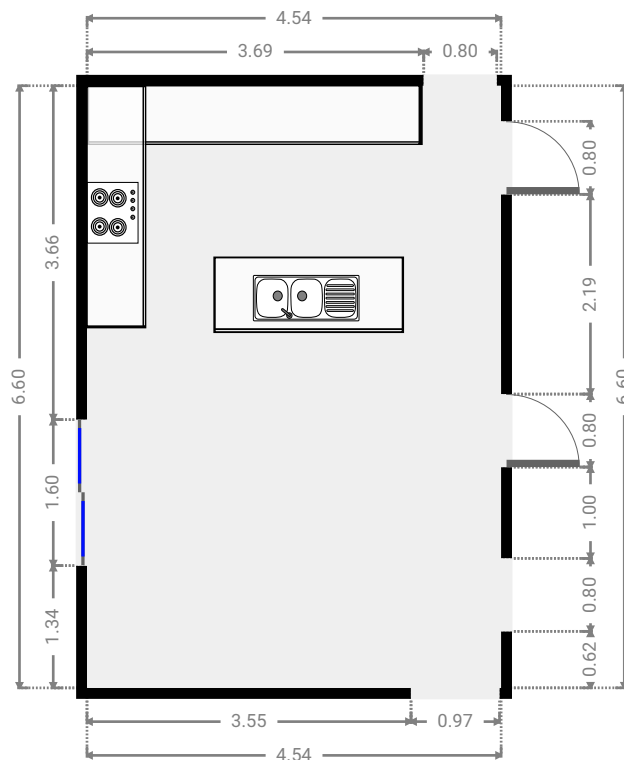
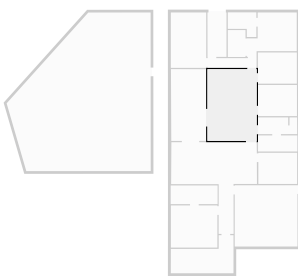
▼ Hall  
Ground Floor

WIDTH: 4.52 m • LENGTH: 0.90 m  
AREA: 4.07 m<sup>2</sup> • PERIMETER: 10.84 m



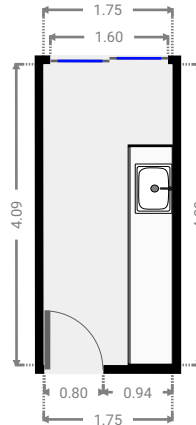
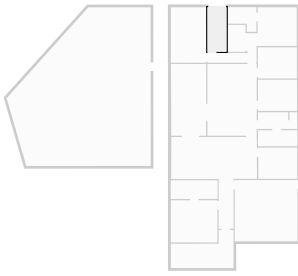
▼ Kitchen  
Ground Floor

WIDTH: 4.54 m • LENGTH: 6.60 m  
AREA: 29.96 m<sup>2</sup> • PERIMETER: 22.28 m



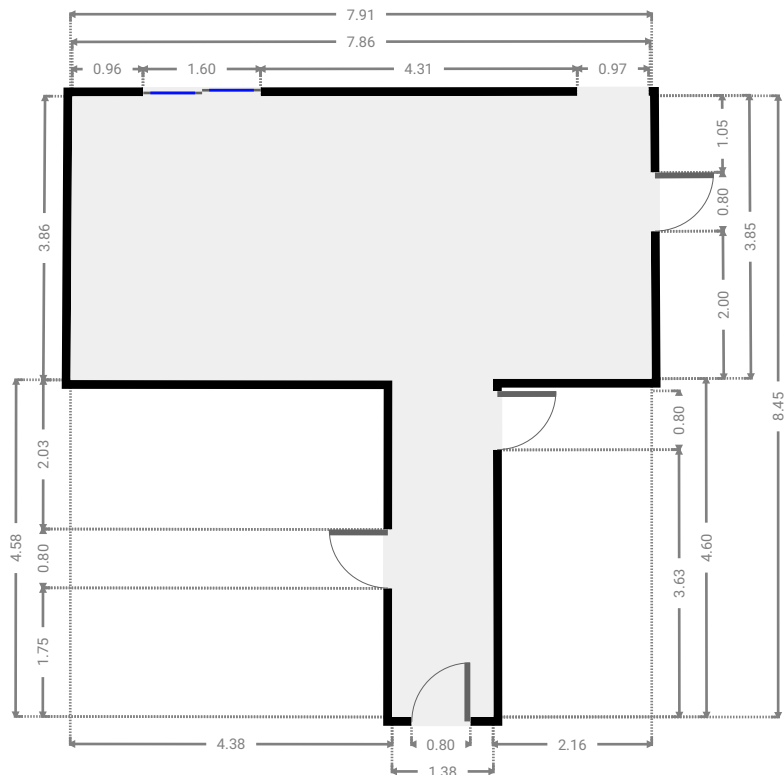
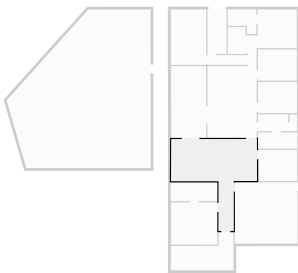
## ▼ Laundry Room Ground Floor

WIDTH: 1.75 m • LENGTH: 4.09 m  
AREA: 7.16 m<sup>2</sup> • PERIMETER: 11.68 m



## ▼ Living Room Ground Floor

WIDTH: 7.91 m • LENGTH: 8.45 m  
AREA: 36.72 m<sup>2</sup> • PERIMETER: 32.67 m



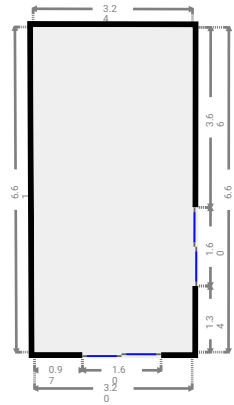
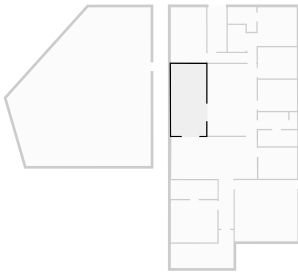
# 6 Giles Court

FLOORS: 1



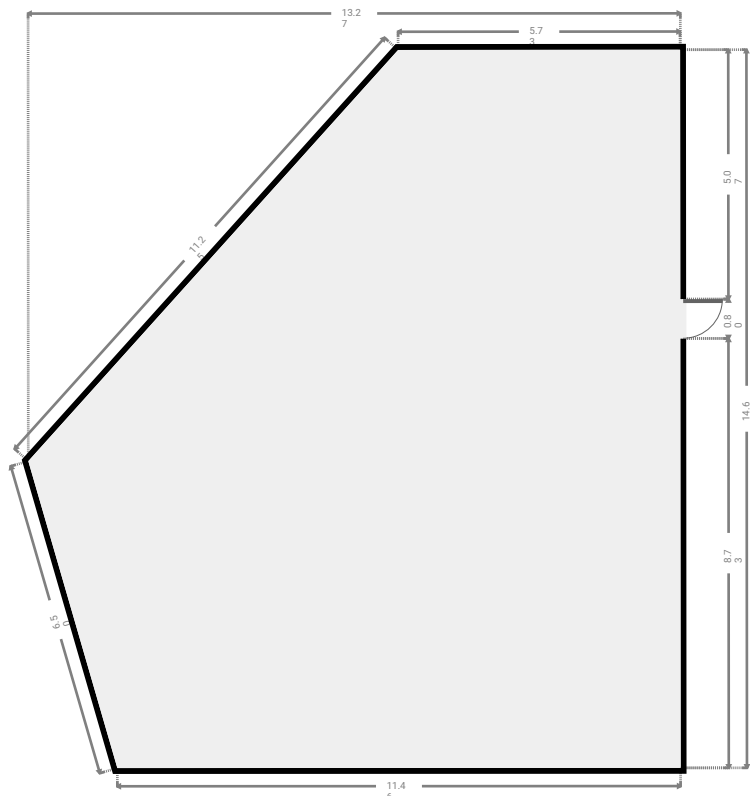
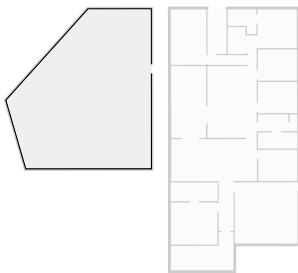
## ▼ Other Ground Floor

WIDTH: 3.24 m • LENGTH: 6.61 m  
AREA: 21.30 m<sup>2</sup> • PERIMETER: 19.66 m

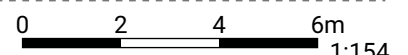


## ▼ Other Ground Floor

WIDTH: 13.27 m • LENGTH: 14.61 m  
AREA: 156.59 m<sup>2</sup> • PERIMETER: 49.55 m

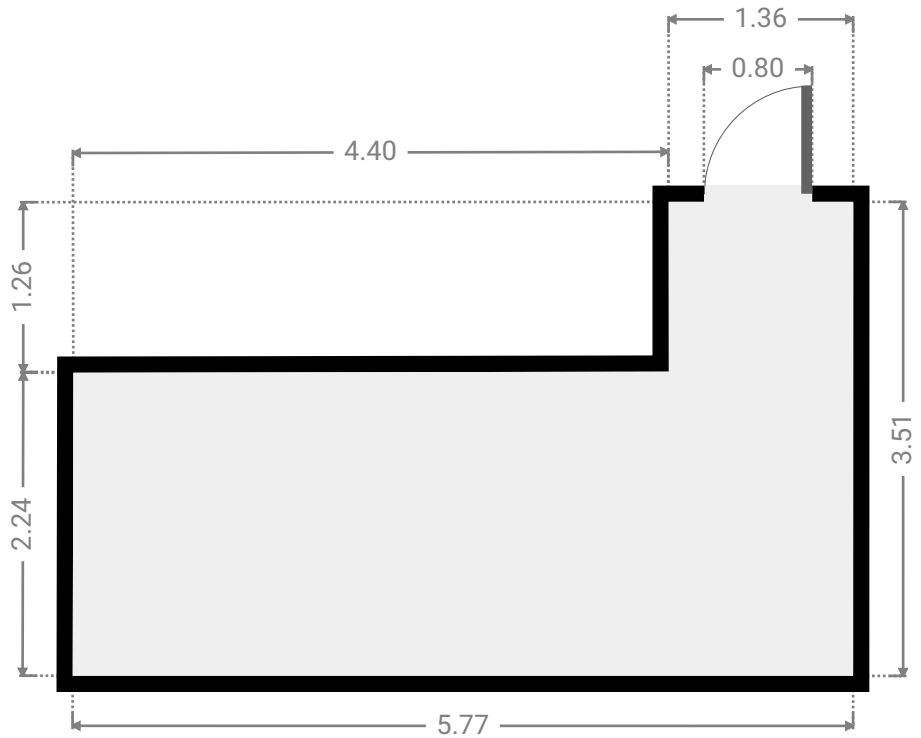
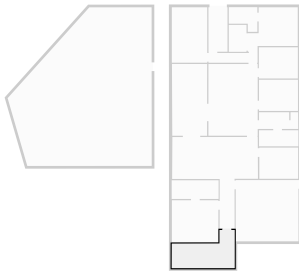


THIS FLOORPLAN IS PROVIDED WITHOUT WARRANTY OF ANY KIND. SENSOPIA DISCLAIMS ANY WARRANTY INCLUDING, WITHOUT LIMITATION, SATISFACTORY QUALITY OR ACCURACY OF DIMENSIONS.



▼ **Other**  
Ground Floor

WIDTH: 5.77 m • LENGTH: 3.51 m  
AREA: 14.67 m<sup>2</sup> • PERIMETER: 18.54 m



▼ **Toilet**  
Ground Floor

WIDTH: 0.71 m • LENGTH: 1.54 m  
AREA: 1.08 m<sup>2</sup> • PERIMETER: 4.48 m

